

Routeburn Great Walk & South Island Wonders

Starting and finishing in Queenstown, this unforgettable journey begins with the spectacular Routeburn Track, a fully guided and supported four-day hike with Ultimate Hikes, featuring cosy lodge stays each evening. From Queenstown, travel north-west into the pristine Te Wāhipounamu World Heritage Area, where you'll explore the natural beauty of Lake Moeraki Wilderness Lodge and the dramatic West Coast glaciers. Continue north to board the iconic TranzAlpine Scenic Train to Christchurch. From there, head south to Aoraki/Mount Cook National Park where Sir Edmund Hillary once trained and cap off your adventure with a breathtaking scenic flight over the Southern Alps, complete with a snow landing on the remote Tasman Glacier.

The rates displayed for this tour are based on a per person occupancy in the Routeburn Multishare Rooms. These rooms have shared bathroom facilities and are in rooms with up to 6 pax on the Milford Track. For double, twin or single room occupancy, kindly contact our sales consultants.

Starts in: Queenstown
 Finishes in: Queenstown
 Length: 13days / 12nights
 Accommodation: Boutique Lodges & Hotels
 Can be customised: Yes

This itinerary can be customised to suit you perfectly. We can add more days, remove days, change accommodations, mix it up, add activities to suit your interests or simply design and create something from scratch. Call us today to get your custom New Zealand itinerary underway.



Inclusions:

Includes: Late model rental cars
 Includes: Fully inclusive rental car insurance (excess may apply)
 Includes: Unlimited kms
 Includes: Afterhours emergency support while touring
 Included activity: Private Transfer Queenstown Airport to your Accommodation
 Included activity: Electronic Travel Guide and In-Country Support App
 Included activity: The Visitor Promise - Cultural Learning Course
 Included activity: Mountain High Scenic Flight with The Helicopter Line
 Included activity: Routeburn Track 3 Day/2 Night Guided Walk with Ultimate Hikes
 Included activity: TranzAlpine Scenic Train: Greymouth to Christchurch
 Included activity: Private Transfer Christchurch Train Station to Accommodation
 Meals included: 12 breakfasts, 3 lunches, 7 dinners

Day 1



Private Transfer Queenstown Airport to your Accommodation

On arrival you will be met by a private driver and delivered to your Queenstown accommodation.

Welcome to Queenstown

Renowned for its adrenaline inducing activities Queenstown is synonymous with adventure. Parked on the shores of Lake Wakatipu this small alpine town is nestled below soaring vistas of The Remarkables Mountain Range. While arguably the brightest gem in New Zealand's crown, Queenstown offers far more than an action-packed getaway. Spend time on the Gibbston wine trail and end with a meal at Michelin star chef Josh Emmett's restaurant, Rata. Take a trip down memory lane on a 100 year old steamship the TSS Earnslaw. Soak in the scenery on your walk around the lake, or venture further afield into Fiordland National Park. Head over the hill to resort town Wanaka, or re-live scenes from Lord Of The Rings by four wheel drive. But - if you really do want that rush - head out on the Shotover Jet, dive off the Nevis Bungy, freefall on the Canyon swing or Zip line the Gondola. Just be sure it's done on an empty stomach & don't say we didn't warn you!

SUGGESTED ACTIVITY - TSS Earnslaw Cruise and Walter Peak Gourmet BBQ Dinner

Enjoy a quintessential Kiwi experience, a delicious gourmet BBQ buffet meal, and a farm demonstration in a stunning lakeside setting. Take in the stunning views of Lake Wakatipu and its surroundings as you cruise across the lake to the historic Walter Peak high country farm aboard the TSS Earnslaw Steamship. Enjoy the ambiance of the heart of the stately homestead while your Colonel's Homestead Restaurant chef prepares a gourmet BBQ dinner. Your seasonal menu includes an extensive selection of local New Zealand produce, including succulent meats and a selection of delicious vegetables and salads. Complete your meal with your choice of delicious desserts, or New Zealand cheeses. After dinner, watch the farm dogs in action with a sheep-herding demonstration and say hello to the other farm animals. Finally, cruise home under the southern stars and enjoy the fresh night air as the lights of Queenstown draw ever closer.

Your accommodation: Sofitel Queenstown

The stunning five-star Sofitel Queenstown is located in the heart of New Zealand's premier four season lake and alpine resort. New Zealand's very first Sofitel, this luxury boutique hotel occupies one of the best locations to get the most from the vibrant town.



Day 2



Explore Queenstown

Well-known as New Zealand's 'adventure capital', Queenstown is home to a range of adventures, from the world's first and most famous bungy jumps to jet boat thrills, white-water rafting, and skydiving. However, Queenstown offers far more than a fast-paced, action-packed holiday. Settled on the shores of beautiful Lake Wakatipu beneath a soaring panorama of the Remarkables Mountain Range, this alpine town is surrounded by many historic, gastronomic, and scenic wonders. Take a stroll through the beautiful lakefront parks and gardens, browse through market stalls on weekends, dine in wonderful al-fresco restaurants, or ride on the 100-year-old historic Steamship - TSS Earnslaw to Walter Peak Station. Take the Queenstown Gondola up to Bob's Peak and soak up the panoramic views of the magnificent lake and mountain ranges. And after all of that, if you do want the adrenaline rush, Queenstown is known for taking your pick from the Shotover Jet, Canyon Swing, Zipline, Luge, or Heli-hike.

SUGGESTED ACTIVITY - Gold Heritage: Skippers Canyon Tour with Nomad Safaris

An unforgettable 4WD adventure with Nomad Safaris into the historic Skippers Canyon. This half-day tour follows the dramatic Skippers Road, carved by hand into the cliffs of the Shotover River Valley. Enjoy breathtaking views as your guide leads you to historic landmarks, including the Skippers Suspension Bridge and the restored schoolhouse, offering a glimpse into the area's rich heritage. Recognized as one of the world's most scenic roads by the British Automobile Association, this thrilling journey It is important you read and understand the risks associated with this activity. For more information see [here](#).

Routeburn Track Briefing

Please check in at 13:45 on the day prior to your walk for a group pre-track briefing. The briefing is held at the Ultimate Hikes Centre, Ground Floor, The Station Building, Duke Street Entrance, Queenstown. At the briefing, you will have the opportunity to confirm your dietary, medical information and emergency contact details. You will be able to pick up any gear you need to borrow from us or purchase any last-minute items from our shop. The customer service staff will also give you an overview of what to expect while you are on track. If you cannot make the pre-track briefing, please contact Reservations on +64 3 450 1940 or info@ultimatehikes.co.nz as soon as possible.

Your accommodation: Sofitel Queenstown

The stunning five-star Sofitel Queenstown is located in the heart of New Zealand's premier four season lake and alpine resort. New Zealand's very first Sofitel, this luxury boutique hotel occupies one of the best locations to get the most from the vibrant town.

Meals included: Breakfast



Day 3



Routeburn Track 3 Day/2 Night Guided Walk with Ultimate Hikes

The Routeburn Track traverses wild and scenic mountain country between the Hollyford and Dart Valleys at the base of New Zealand's Southern Alps. Since the 1880's the Routeburn Track has proved to be one of the most accessible and popular journeys into New Zealand's forests and mountains. The Routeburn Track passes through two national parks, Fiordland and Mount Aspiring, and is part of Te Wahipounamu, South West New Zealand World Heritage Area. The area is a haven for native birdlife: The Robin, Fantail, Parakeet, Bellbird, Yellowhead and watch out for the resident Kea at Routeburn Falls! The variety of landscapes will also astound you: Mountainous peaks, sheer rock faces, alpine basins, pristine lakes, cascading waterfalls, luxuriant forest, turquoise rivers and million-dollar views around every corner.

The Routeburn Track Guided Walk is a 3 day / 2 night Queenstown to Queenstown all-inclusive walk traversing New Zealand's Southern Alps. The package includes all transport, private or shared accommodation in custom built lodges, meals, snacks, backpacks and rain jackets and you will be led by expert Ultimate Hikes guides. It is important you read and understand the risks associated with this activity. For more information please [click here](#).

Queenstown to Mackenzie Lodge

The day begins early with a coach ride to the Divide, stopping in Te Anau for morning tea on the way. At the Divide, make sure you collect your lunch from the guides before setting off. The track begins with a steady climb up through Silver Beech forest to the turn off to Key Summit. Leave your pack at the turn off before climbing to the Summit for great views and a wetlands walk. Collect your pack, and it's a short walk down to Lake Howden for lunch. In the afternoon, the track gradually climbs to the 80m (240ft) Earland Falls. Stop for a break at the base pool. The track then traverses around the mountain side to the Orchard. Beyond, you'll climb for a short section before a steep descent to Mackenzie Lodge.

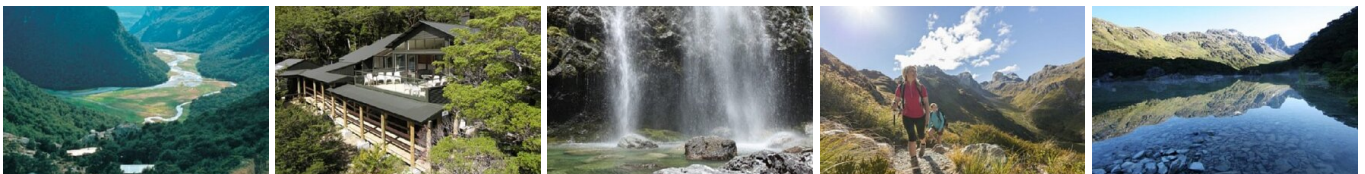
Your accommodation: Routeburn Track Lodges

The Routeburn Track lodges have been purposely designed and built and all lodges have drying rooms, flush toilets and hot showers complete with soap, shampoo and conditioner. The lodge kitchen treats you with a three course dinner and cooked breakfast. Accommodation is in a private room with queen or twin bedding or bunk bed rooms sleeping up to 4.

Meals included: Breakfast, Lunch, Dinner



Day 4



Lake Mackenzie to Routeburn Falls Lodge

The track starts just past Lake Mackenzie and rises up through ancient beech forest emerging out of the treeline for stunning views of the lake below. At the top of the zig zags is Ocean Peak Corner. On a clear day you'll have a full panorama of the Darran Mountains across the Hollyford Valley, to the distant Tasman Sea at Martin's Bay. Follow the track along the mountain face and ask your guides to point out the native flora, including mountain daisies, buttercups, gentians and edelweiss. After lunch at the Harris Saddle, if track and weather conditions allow, you can climb Conical Hill for a panoramic view of the surrounding peaks. The track continues around Lake Harris, before descending into the upper basins of the Routeburn Valley skirting the Routeburn Falls. Spend your final night at the aptly named Routeburn Falls Lodge. Today's hike will be 11 km (6.9 miles) and will last about 4-6 hours.

Your accommodation: Routeburn Track Lodges

The Routeburn Track lodges have been purposely designed and built and all lodges have drying rooms, flush toilets and hot showers complete with soap, shampoo and conditioner. The lodge kitchen treats you with a three course dinner and cooked breakfast. Accommodation is in a private room with queen or twin bedding or bunk bed rooms sleeping up to 4.

Meals included: Breakfast, Lunch, Dinner



Day 5



Routeburn Falls to Queenstown

The track descends from the lodge through Red Beech forest to the alpine pastures of the Routeburn Flats. Picnic beside the Routeburn river at Forge Flat. The track shadows the river through the beech forest to the Road End. Take the nature walk at the detour to read more about the native forest and listen for native birds in the valley. At Road End the coach will be waiting to take you back to Queenstown, stopping at the small town of Glenorchy for refreshments. Today's walk is 9km (5.7 miles) and will take between 3 to 4 hours.

Your accommodation: Sofitel Queenstown

The stunning five-star Sofitel Queenstown is located in the heart of New Zealand's premier four season lake and alpine resort. New Zealand's very first Sofitel, this luxury boutique hotel occupies one of the best locations to get the most from the vibrant town.

Meals included: Breakfast, Lunch



Day 6



Collect Rental Car

This tour's from price includes an intermediate-sized vehicle, setting you up for comfortable travels. Yet, we understand every adventure is unique! Feel free to select the perfect wheels from our incredible collection of rental cars, spanning from economy hatchbacks to premium SUVs.

Queenstown to Lake Moeraki

Crossing the Crown Range, the highest sealed road in the country, you arrive into the alpine town of Wanaka. The route follows the shores of Lakes Wanaka and Hawea before you enter the township of Makarora, the gateway to Mt. Aspiring National Park and the Blue Pools here are a wonderful 30 minute walk through pristine native beech forest. Descending into Mt. Aspiring National Park and towards the Haast Pass, crashing rivers and waterfalls are around every corner. Crossing the Haast River you are now truly on the wild West Coast, a 600 kilometre stretch of bush, rainforest and podocarp forest. The tranquil bush surroundings of Wilderness Lodge Lake Moeraki are just a few extra kilometres.

Your accommodation: Wilderness Lodge, Lake Moeraki

Few places on earth can match the unique natural setting of the Wilderness Lodge Lake Moeraki, in the heart of the 2.7 million hectares South West New Zealand World Heritage Area. Spectacular beaches that are home to fur seals and crested penguins, untouched lowland rainforests spread between pristine lakes and rivers which drain the snow-capped Southern Alps.

Meals included: Breakfast, Dinner



Day 7



Wilderness Lodge Lake Moeraki

Twice daily complimentary activities are led by expert naturalists and introduce guests to the area's remarkable natural history (approx. 1-hour duration each). If you'd prefer to a guide to explore further afield, there are other, charged experiences available. These trips are generally 3 to 4 hours in length and are a great way to learn about wild New Zealand. There are also great self-guided options available, including a 10km network of walking trails, kayaking on the calm waters of Lake Moeraki, and of course, relaxing and soaking up the views.

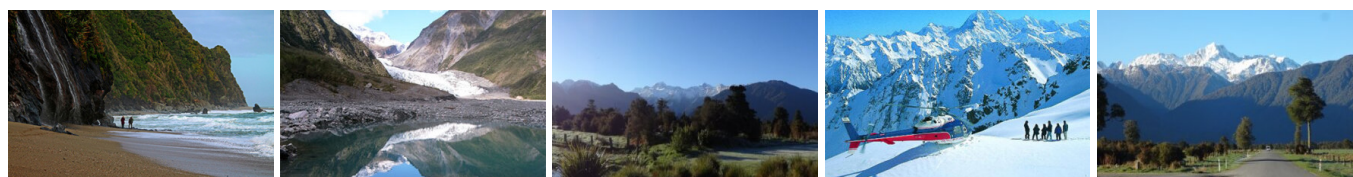
Your accommodation: Wilderness Lodge, Lake Moeraki

Few places on earth can match the unique natural setting of the Wilderness Lodge Lake Moeraki, in the heart of the 2.7 million hectares South West New Zealand World Heritage Area. Spectacular beaches that are home to fur seals and crested penguins, untouched lowland rainforests spread between pristine lakes and rivers which drain the snow-capped Southern Alps.

Meals included: Breakfast, Dinner



Day 8



Lake Moeraki to Franz Josef Glacier

Heading North along the mighty West Coast highway you pass through ancient temperate rainforests while getting sneak peeks of the wild coast beach occasionally. Paringa Salmon Farm is worth a stop to stretch your legs, feed the fish, and stop for a refreshment. Keep heading North and be sure to enjoy the view of the everchanging towering snowcapped Southern Alps Mountain Range.

If you are wanting to view Fox Glacier on foot, the start of the track is 2kms before Fox Glacier Township the walk is an easy grade and will take two hours to return. Fox Glacier welcomes you to the glacier region, take a short 5-minute drive west to see the impressive Lake Matheson famous for its reflections of snow-capped mountains. From Fox, you have a 45-minute drive over the Fox Hills to Franz Josef Township.

Explore Franz Josef

Franz Josef is a small yet lively town in the heart of New Zealand's West Coast, best known for its spectacular 12 km-long glacier. The township is surrounded by lush, rainforest-clad mountains and has a vibrant atmosphere with plenty to explore. A variety of scenic walking trails offer incredible views of the glacier, but for a truly up-close experience, a licensed helicopter tour is the only way to set foot on the ice. Beyond the glacier, unwind in the rejuvenating Hot Pools or visit the West Coast Wildlife Centre to spot rare kiwi birds. If you're in the mood for a more relaxed day, the township is home to charming souvenir and gift shops, as well as great dining spots like SnakeBite Brewery and King Tiger. Whether you're chasing adventure or relaxation, Franz Josef is a stunning blend of wild beauty and welcoming hospitality.

SUGGESTED ACTIVITY - Franz Josef Nature Tour with Glacier Valley Eco Tours

Nestled in thick historic West Coast forest and a stone's throw from wild black sand beaches, this is one of the world's most unusual glaciers. Beautiful blue skies or magical misty rain, whatever the weather - you will feel like you are in Narnia or LOTR.

With easy walking at your pace, information on glaciology, geology, geomorphology, flora and fauna, local legends, history, and small guided groups with fantastic guides, you will experience this glacier in style and in the best hands with the only local company. Wander past glacier rivers and streams and through beautiful podocarp forest; discover hidden natural treasures such as native snails, wild native mushrooms, and dozens of species of native orchids; listen to native bird song and waterfalls; see if you can spot a Chamois or a Tahr on the huge snow-capped mountains above while drinking a cup of tea and talking one-on-one with your guide.

SUGGESTED ACTIVITY - Twin Glacier Scenic Helicopter Flight with The Helicopter Line

A spectacular scenic flight soaring over two of New Zealand's most famous glaciers, Fox and Franz Josef. Landing at the head of one and view the incredible sight of this frozen river as it winds its way through ancient carved valleys. It is important to read and understand the risks associated with this activity. A full risk disclosure can be found [here](#).

Your accommodation: Legacy Te Waonui Hotel Franz Josef

Nestled amongst native West Coast rainforest at Franz Josef is a very special five-star retreat. Designed with utmost care of its precious environment, guests at Te Waonui Forest Retreat will find themselves encircled by rainforest and accommodated in natural and sustainable luxury.

Meals included: Breakfast, Dinner



Day 9



Franz Josef to Greymouth Train Station

Head north along the mighty West Coast highway you pass through ancient temperate rainforests while getting sneak peeks of the wild coast beach occasionally. Whataroa is the next town where you can see one of the world's rarest birds, the Kōtuku - White Heron. The Kōtuku nest at the Waitangi Roto Nature Reserve, only accessible with a guided tour from October to March. The next town is Ross which is the site of an old gold mining settlement where the local information centre offers you the chance to pan for gold. Hokitika is a great place to explore craft and gift stores and head to the coast and take in the endless sea views. The Pounamu-Greenstone on offer in Hokitika is probably some of the best you will see in the country. Continue on to Greymouth, the largest town on the West Coast and the starting point for the next leg of your journey the TranzAlpine Scenic Train. Drop your rental car at the Greymouth Train Station depot located at the train station building before boarding your train to Christchurch.

TranzAlpine Scenic Train: Greymouth to Christchurch

Considered one of the world's great train journeys, the TranzAlpine Scenic Train takes you from Greymouth to Christchurch. Travel across the South Island from the west to the east coast through Arthur's Pass National Park. From the comfort of your carriage see lush beech forest, deep river valleys and the spectacular peaks of the Southern Alps. Descend to the windswept Canterbury Plains before arriving in the city of Christchurch.

Private Transfer Christchurch Train Station to Accommodation

On arrival at the Christchurch train station, you will be met by a private driver and transferred to your accommodation.

Your accommodation: The George Hotel

The George is the essence of supreme comfort. The award-winning 5 star hotel is opposite Hagley Park and just a few minutes stroll from the Botanic Gardens. It also has an award-winning restaurant, 50 Bistro onsite.

Meals included: Breakfast



Day 10



Collect Rental Car

This tour's from price includes an intermediate-sized vehicle, setting you up for comfortable travels. Yet, we understand every adventure is unique! Feel free to select the perfect wheels from our incredible collection of rental cars, spanning from economy hatchbacks to premium SUVs.

Christchurch to Aoraki-Mt Cook National Park

Drive through the heart of the South Island, crossing the vast Canterbury plains. Catch your breath in Geraldine before continuing through Fairlie. Ascending Burkes pass you'll come to the picturesque town of Lake Tekapo. Follow the road and take in the view of Aoraki-Mt Cook (New Zealand's tallest mountain) from the shores of Lake Pukaki, known for its glacier fed turquoise blue colour. Continue along the lake to your final destination Aoraki-Mt Cook Village.

SUGGESTED ACTIVITY - Sir Edmund Hillary Alpine Centre Museum and Theatre Explorer Pass with Hermitage

A tribute to New Zealand's Sir Edmund Hillary, a humanitarian, ambassador, and one of the world's greatest explorers. The centre showcases the Aoraki Mount Cook region, the history of climbing, and early transport used throughout the region. This comprehensive museum details the life of Sir Edmund Hillary, the Hermitage, and provides access to the 126-seat custom-designed theatre. Check out the daily film schedule which includes 3D Movies, documentaries, and 360-degree digital dome features.

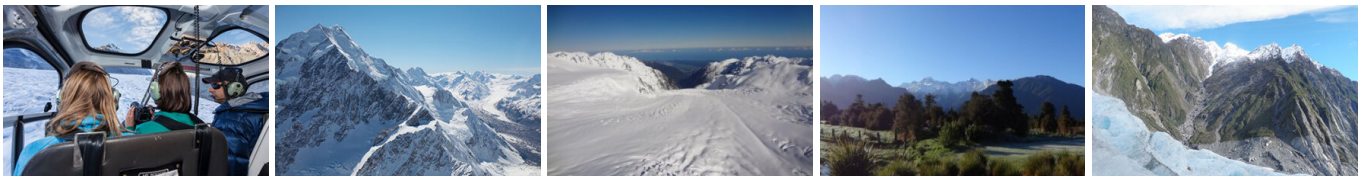
Your accommodation: Hermitage Hotel, Aoraki Wing Premium Plus

Experience the best views in the park from the spacious top floor rooms of the magnificent Hermitage Hotel.

Meals included: Breakfast, Dinner



Day 11



Aoraki-Mt Cook National Park

At 3754m Aoraki-Mt Cook is Aotearoa-New Zealand's highest mountain, located deep in the heart of the Southern Alps. As well as its impressive beauty, Aoraki-Mt Cook National Park is also home to a huge range of awe-inspiring sights and activities. Take to the air with Mt Cook Ski Planes for a scenic flight that includes a glacier landing. At around 27 kilometres long the Tasman Glacier is New Zealand's longest and a Glacier Explorers tour allows you to see its unique features up close.

There are many short hikes in and around the park and these are well signposted around the village. Those with an interest in the night sky should take a Big Sky Stargazing tour with the Hermitage Hotel. The region is considered to have one of the clearest night skies in the world and is one of the few gold-rated dark sky reserves worldwide.

Visit the Sir Edmund Hillary Alpine Centre for insight into this region's mountain climbing history. You'll also learn of Sir Ed's incredible achievements and his dedication to helping others around the world.

Mountain High Scenic Flight with The Helicopter Line

The premier flight over this amazing alpine region with vast snowfields, glaciers and a spectacular view of New Zealand's highest peak, Aoraki/Mount Cook. Land high above glaciers and experience what it feels like to stand in snow amongst the mountains. Traverse the Southern Alps to view the mighty Fox and Franz Josef Glaciers as they journey slowly down towards the native rainforests and the Tasman Sea on the rugged West Coast. It is important to read and understand the risks associated with this activity. A full risk disclosure can be found here.

Walking Track in Aoraki-Mt Cook National Park

Aoraki-Mt Cook Village offers a variety of short scenic walks suitable for all ages and fitness levels. Start your adventure at the Department of Conservation Information Centre, where you can learn about track conditions, local history, and the area's wildlife. Here are a few popular walks to explore: Bowen Bush Walk: 10-minute return Glencoe Walk: 10-minute return Red Tarns Track: 2-hour return Kea Point Walk: 2-hour return Sealy Tarns Track: 3 - 4 hours return

Your accommodation: Hermitage Hotel, Aoraki Wing Premium Plus

Experience the best views in the park from the spacious top floor rooms of the magnificent Hermitage Hotel.

Meals included: Breakfast, Dinner



Day 12



Aoraki Mt Cook National Park to Queenstown

Leaving the alpine region of Aoraki Mt Cook, you'll travel through the lakeside town of Twizel, then a little further to Omarama the gliding capital of New Zealand. Continue on over the Lindis Pass, one of New Zealand's highest roads with a summit of 971 metres. Arrive in the quaint village of Tarras, then continue on a short way to the historic Bendigo Reserve, one of Otago's original gold mining settlements. Follow the road to Cromwell, and keep going through the sheer cliffs of the Kawarau Gorge towards Gibbston, one of New Zealand's premier wine growing regions. See the historic Kawarau Bridge where you can bungee jump or relax and watch others take the plunge. Approaching Queenstown, the Remarkables mountain range comes into view as you arrive into the adventure capital of New Zealand.

Your accommodation: Sofitel Queenstown

The stunning five-star Sofitel Queenstown is located in the heart of New Zealand's premier four season lake and alpine resort. New Zealand's very first Sofitel, this luxury boutique hotel occupies one of the best locations to get the most from the vibrant town.

Meals included: Breakfast



Day 13



Return your vehicle to Queenstown Airport

Explore more of Queenstown before dropping your rental car at the airport depot and continuing your onward journey.

Farewell from Aotearoa-New Zealand

Bid farewell to Aotearoa-New Zealand, taking with you unforgettable memories of its breathtaking landscapes and incredible adventures. In Maori, it is said mā te wā, which is not goodbye, it is see you soon!

Tour details

Departures:	Daily
Tour type:	South Island Self Drive
Starts:	Queenstown
Finishes:	Queenstown
Tour length:	13
Accommodation:	Boutique Lodges & Hotels
Car/transport type:	

Included activities

Includes	All breakfasts
Includes	7 dinners
Includes	Private train station transfers
Includes	Private airport transfers
Includes	TranzAlpine Train from Greymouth to Christchurch
Includes	Mt Cook Ultimate Scenic Flight
Includes	Routeburn Track Guided Walk with Ultimate Hikes
Includes	Lake Moeraki Wilderness Lodge Experience

Accommodation summary

Day 1	Sofitel Queenstown
Day 2	Sofitel Queenstown
Day 3	Routeburn Track Lodges
Day 4	Routeburn Track Lodges
Day 5	Sofitel Queenstown
Day 6	Wilderness Lodge, Lake Moeraki
Day 7	Wilderness Lodge, Lake Moeraki
Day 8	Legacy Te Waonui Hotel Franz Josef
Day 9	The George Hotel
Day 10	Hermitage Hotel, Aoraki Wing Premium Plus
Day 11	Hermitage Hotel, Aoraki Wing Premium Plus
Day 12	Sofitel Queenstown