



Ultimate New Zealand

The ultimate New Zealand self drive tour. National Parks, world heritage sights, marine reserves, glaciers, fiords, whales and more! Experience the best locations and scenic drives while staying at some of New Zealand's finest boutique lodges and hotels.

Starts in: Christchurch
 Finishes in: Auckland
 Length: 23days / 22nights
 Accommodation: Boutique Lodges & Hotels
 Can be customised: Yes

This itinerary can be customised to suit you perfectly. We can add more days, remove days, change accommodations, mix it up, add activities to suit your interests or simply design and create something from scratch. Call us today to get your custom New Zealand itinerary underway.



Inclusions:

Includes: Late model rental cars

Includes: Unlimited kms

Included activity: Private Transfer Christchurch International Airport to Christchurch Accommodation

Included activity: The Visitor Promise - Cultural Learning Course

Included activity: Interislander Ferry Picton to Wellington

Included activity: Glacier Explorers

Included activity: Fullers Ferry Auckland to Waiheke Island (Return)

Included activity: Private transfer Fullers Ferry Terminal to Auckland Airport with Tourcorp

Included activity: TSS Earnslaw Cruise and Walter Peak Gourmet BBQ Dinner

Included activity: Franz Josef Glacier Helihike with Franz Josef Glacier Guides

Includes: Fully inclusive rental car insurance (excess may apply)

Includes: Afterhours emergency support while touring

Included activity: Electronic Travel Guide and In-Country Support App

Included activity: Ocean's Cabin with Whale Watch Kaikōura

Included activity: Te Pā Tū Evening Māori Cultural Experience - Dinner Included

Included activity: Sir Edmund Hillary Alpine Centre Museum and Theatre Explorer Pass with Hermitage

Included activity: Fullers Ferry Waiheke Island to Auckland

Included activity: Milford Sound Cruise with Real NZ - Lunch Included

Included activity: Gondola and Buffet Dinner with Skyline Queenstown

: 21 breakfasts, 1 lunch, 8 dinners

Day 1



Private Transfer Christchurch International Airport to Christchurch Accommodation

On arrival, you will be met by a private driver and transferred to your Christchurch accommodation.

Welcome to Christchurch City

Christchurch New Zealand's garden city is steadily being transformed into a vibrant urban destination. Encompassing a large green belt, it is known for its wide tree lined avenues and lush gardens. A great way to explore the city or easy way to see the sights or ride the historic trams across town to the renowned botanic gardens and the unique cardboard Transitional Cathedral, that's right it is built of cardboard!

Your accommodation: The Muse Christchurch

The Muse is a place where culture, business, and art come together. The hotel boasts a fusion of designer chic surroundings, expressive local art and luxurious comforts to provide each guest with a unique and exceptional experience during their stay. This is the ideal hotel for any purpose of visit and will pleasantly surprise even the most seasoned guest in Christchurch.



Day 2



Collect Rental Car

This tour's from price includes an intermediate-sized vehicle, setting you up for comfortable travels. Yet, we understand every adventure is unique! Feel free to select the perfect wheels from our incredible collection of rental cars, spanning from economy hatchbacks to premium SUVs.

Christchurch to Aoraki-Mt Cook National Park

Drive through the heart of the South Island, crossing the vast Canterbury plains. Catch your breath in Geraldine before continuing through Fairlie. Ascending Burkes pass you'll come to the picturesque town of Lake Tekapo. Follow the road and take in the view of Aoraki-Mt Cook (New Zealand's tallest mountain) from the shores of Lake Pukaki, known for its glacier fed turquoise blue colour. Continue along the lake to your final destination Aoraki-Mt Cook Village.

Glacier Explorers

Experience 500-year-old icebergs up close on the Aoraki-Mt Cook terminal lake. The Glacier Explorers tour is the only one of its kind in New Zealand and one of only three in the world! Very few glaciers terminate into lakes and even fewer of them are accessible. See towering ice cliffs and floating icebergs from the safety of a specially designed boat. These boats provide a safe way to view unseen and inaccessible areas of New Zealand's largest glacier The Tasman.

Sir Edmund Hillary Alpine Centre Museum and Theatre Explorer Pass with Hermitage

A tribute to New Zealand's Sir Edmund Hillary, a humanitarian, ambassador, and one of the world's greatest explorers. The centre showcases the Aoraki Mount Cook region, the history of climbing, and early transport used throughout the region. This comprehensive museum details the life of Sir Edmund Hillary, the Hermitage, and provides access to the 126-seat custom-designed theatre. Check out the daily film schedule which includes 3D Movies, documentaries, and 360-degree digital dome features.

Your accommodation: Hermitage Hotel, Aoraki Wing Premium

The Hermitage Hotel ringed by magnificent snow-capped peaks of the Southern Alps, is a world-renowned tourist destination and has been an icon of superior accommodation and dining since 1884.

Meals included: Breakfast, Dinner



Day 3



Aoraki Mt Cook National Park to Te Anau

Twizel, just south of Aoraki-Mt Cook was the location of many Lord of the Rings movie scenes and a little further on is Omarama, the gliding capital of New Zealand. The Lindis Pass is one of New Zealand's highest roads with the summit reaching 971 metres. The tussock-covered hills offer a visual contrast as you pass from the Mackenzie Basin and into Central Otago. The first Central Otago settlement you reach is the quaint village of Tarras, which has several boutique stores and a lovely cafe. Cromwell sits at the head of the Kawarau Gorge and the historic old town is well worth the visit, the buildings are now home to quaint shops and cafes. The old town buildings were relocated from the valley that now sits deep under Lake Dunstan. Continue through the sheer cliffs of the Kawarau Gorge as they guide you towards Gibbston, one of New Zealand's premier wine-growing regions. At the famous historic Kawarau Bridge, you can take a bungy jump or sit back and enjoy the drama as visitors hurtle off the bridge. Approaching Queenstown the impressive Remarkables mountain range comes into view and then beautiful Lake Wakatipu as you head south. The lake guides you into Southland through its rich farming pastures and into Te Anau, the gateway to Fiordland National Park.

Your accommodation: Fiordland Lodge

Set in a World Heritage area Fiordland Lodge offers the discerning traveller comfort and privacy. The elegance and splendour of the Lodge is mirrored in the breathtaking views of Lake Te Anau and Fiordland. Private and serene, the Lodge is perfect for relaxation, or as a base for your Fiordland experience.

Meals included: Breakfast, Dinner



Day 4



Te Anau to Milford Sound, returning to Te Anau

The magnificent Milford Road leading to Milford Sound offers some of the most beautiful and iconic scenery in the country. Countless photo opportunities mean this drive should not be rushed. From crystal clear lakes and towering mountains to lush glacier-formed meadows, this area is abundant with picture-perfect scenes. Continue on through the Homer Tunnel, an engineering marvel at 1219 meters long. Arriving in the village of Milford, you will be greeted with an amazing view of Mitre Peak. A day cruise into the heart of the sound is not to be missed. You'll learn about how this magnificent area was formed and experience the wonder of the falls that line the Fjord before back-tracking the way you came.

Milford Sound Cruise with Real NZ - Lunch Included

Get up close and personal with Milford Sound on a leisurely cruise of this spectacular fiord. From thundering waterfalls to sky-high mountains to lush rainforests, Milford has it all. Experience the spray of a waterfall as you cruise close to sheer rock faces. Informative, participative and relaxed, this is the perfect way to experience Milford Sound to the fullest.

Your accommodation: Fiordland Lodge

Set in a World Heritage area Fiordland Lodge offers the discerning traveller comfort and privacy. The elegance and splendour of the Lodge is mirrored in the breathtaking views of Lake Te Anau and Fiordland. Private and serene, the Lodge is perfect for relaxation, or as a base for your Fiordland experience.

Meals included: Breakfast, Lunch, Dinner



Day 5



Te Anau to Queenstown

Journey across expansive tussock lands en route to Queenstown. Pass through Mossburn, renowned as the deer capital of New Zealand, and continue through the picturesque Southland countryside. As the road begins to trace the edge of Lake Wakatipu, marvel at the breathtaking views from the Devil's Staircase. Finally, approach Queenstown, the adventure capital of New Zealand, with the Remarkables mountain range standing majestically in the backdrop.

TSS Earnslaw Cruise and Walter Peak Gourmet BBQ Dinner

Enjoy a quintessential Kiwi experience, a delicious gourmet BBQ buffet meal, and a farm demonstration in a stunning lakeside setting. Take in the stunning views of Lake Wakatipu and its surroundings as you cruise across the lake to the historic Walter Peak high country farm aboard the TSS Earnslaw Steamship. Enjoy the ambiance of the heart of the stately homestead while your Colonel's Homestead Restaurant chef prepares a gourmet BBQ dinner. Your seasonal menu includes an extensive selection of local New Zealand produce, including succulent meats and a selection of delicious vegetables and salads. Complete your meal with your choice of delicious desserts, or New Zealand cheeses. After dinner, watch the farm dogs in action with a sheep-herding demonstration and say hello to the other farm animals. Finally, cruise home under the southern stars and enjoy the fresh night air as the lights of Queenstown draw ever closer.

Your accommodation: Queenstown House B&B Apartments

Queenstown House is a stylish haven offering incredible elevated views of Lake Wakatipu and just 200 metres from the centre of Queenstown.

Discover a boutique collection of individually furnished guest rooms and spacious villa apartments.

Enjoy a delicious gourmet breakfast and relax around the fire in one of our other guest lounges with a magazine or book.

Meals included: Breakfast, Dinner



Day 6



Explore Queenstown

Well-known as New Zealand's 'adventure capital', Queenstown is home to a range of adventures, from the world's first and most famous bungy jumps to jet boat thrills, white-water rafting, and skydiving. However, Queenstown offers far more than a fast-paced, action-packed holiday. Settled on the shores of beautiful Lake Wakatipu beneath a soaring panorama of the Remarkables Mountain Range, this alpine town is surrounded by many historic, gastronomic, and scenic wonders. Take a stroll through the beautiful lakefront parks and gardens, browse through market stalls on weekends, dine in wonderful al-fresco restaurants, or ride on the 100-year-old historic Steamship - TSS Earnslaw to Walter Peak Station. Take the Queenstown Gondola up to Bob's Peak and soak up the panoramic views of the magnificent lake and mountain ranges. And after all of that, if you do want the adrenaline rush, Queenstown is known for taking your pick from the Shotover Jet, Canyon Swing, Zipline, Luge, or Heli-hike.

Gondola and Buffet Dinner with Skyline Queenstown

With breathtaking views across Queenstown and Lake Wakatipu, the Skyline Complex is a must-do. Catch the fully enclosed gondola to the summit for a remarkable panorama of the city's surroundings. Wander the outdoor viewing decks then enjoy a gourmet buffet meal in the Stratosphere Restaurant.

Your accommodation: Queenstown House B&B Apartments

Queenstown House is a stylish haven offering incredible elevated views of Lake Wakatipu and just 200 metres from the centre of Queenstown.

Discover a boutique collection of individually furnished guest rooms and spacious villa apartments.

Enjoy a delicious gourmet breakfast and relax around the fire in one of our other guest lounges with a magazine or book.

Meals included: Breakfast, Dinner



Day 7



Queenstown to Franz Josef Glacier via Wānaka

From Queenstown you'll cross the Crown Range, the highest sealed road in New Zealand to arrive in the Alpine town of Wānaka, gateway to Mt Aspiring National Park. Skirting the shores of both Lake Wanaka and Hawea, you will enter the small town of Makarora. Stop at Blue Pools for a 1-hour return walk through the native beech forest to a glacier-fed swimming hole. Continue on through the remote seaside settlement of Haast before heading up the wild West Coast highway you pass through ancient temperate rainforests while getting sneak peeks of the wild coast beaches occasionally. Paringa Salmon Farm is worth a stop to stretch your legs, feed the fish, and stop for lunch and refreshments. Keep heading North and be sure to enjoy the view of the ever-changing towering snowcapped Southern Alps Mountain Range. Fox Glacier welcomes you first, then comes your destination for the night Franz Josef township.

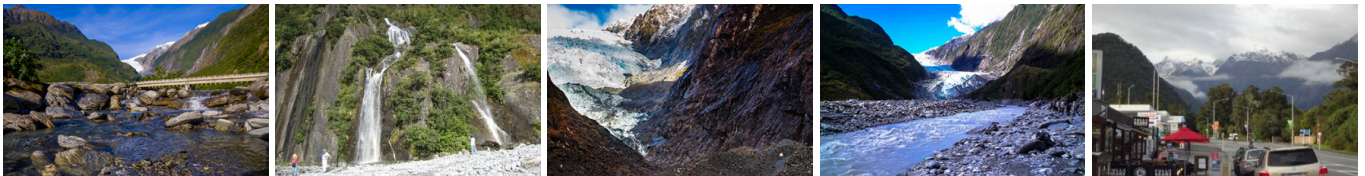
Your accommodation: Legacy Te Waonui Hotel Franz Josef

Nestled amongst native West Coast rainforest at Franz Josef is a very special five-star retreat. Designed with utmost care of its precious environment, guests at Te Waonui Forest Retreat will find themselves encircled by rainforest and accommodated in natural and sustainable luxury.

Meals included: Breakfast, Dinner



Day 8



Explore Franz Josef

Franz Josef is a small yet lively town in the heart of New Zealand's West Coast, best known for its spectacular 12 km-long glacier. The township is surrounded by lush, rainforest-clad mountains and has a vibrant atmosphere with plenty to explore. A variety of scenic walking trails offer incredible views of the glacier, but for a truly up-close experience, a licensed helicopter tour is the only way to set foot on the ice. Beyond the glacier, unwind in the rejuvenating Hot Pools or visit the West Coast Wildlife Centre to spot rare kiwi birds. If you're in the mood for a more relaxed day, the township is home to charming souvenir and gift shops, as well as great dining spots like SnakeBite Brewery and King Tiger. Whether you're chasing adventure or relaxation, Franz Josef is a stunning blend of wild beauty and welcoming hospitality.

Franz Josef Glacier Helihiike with Franz Josef Glacier Guides

After a thrilling scenic flight, high above the rugged terrain, you will land on the glacier, ready to undertake a guided glacier hike. Your friendly guide will lead you through some of the most pristine and awe-inspiring glacial scenery in the world. Your guide will choose your route carefully as you go and, with an eye for the most spectacular ice formations, you'll soon be making your way through an extraordinary landscape of towering peaks and glistening blue ice. It is important you read and understand the risks associated with this activity prior to travel. For more information please see [here](#).

Your accommodation: Legacy Te Waonui Hotel Franz Josef

Nestled amongst native West Coast rainforest at Franz Josef is a very special five-star retreat. Designed with utmost care of its precious environment, guests at Te Waonui Forest Retreat will find themselves encircled by rainforest and accommodated in natural and sustainable luxury.

Meals included: Breakfast, Dinner



Day 9



Franz Josef to Hokitika

The drive north from Franz Josef takes you through the historic gold mining region of Ross and the town of Hokitika, a great place to explore the craft stores, in particular the jade or greenstone.

The township of Hokitika was built on the pioneering spirit of the West Coast settlers. A busy port in its heyday it then became a center for the West Coast gold rush and more recently has become known for its Jade or Greenstone crafts. Here you will find many shops selling intricately carved pieces as well as other fine arts and souvenirs. The town itself has some great old buildings and you will also find some fine restaurants and cafes.

The windswept beach is often covered with driftwood making for an interesting stroll and the scenery of the mountains is quite spectacular with Mt. Cook very often in view. Around 15 kilometers inland you will find Lake Kaniere, an idyllic spot to take bush walks or simply relax and enjoy the bush-clad hill views, and just south of the town on State Highway 6 is Lake Mahinapua Scenic Reserve. The Hokitika Gorge, around 50 minutes detour from the center is a magnificent granite gorge lined with beautiful native bush. A swing bridge just 2 minutes from the car park takes you over milky blue-green pools and a short walk delivers you to large moss-covered boulders to explore.

Your accommodation: Rimu Lodge

Rimu Lodge is just a short drive from Hokitika, but once you arrive it feels like a world away. Set amidst New Zealand native bush each room takes advantage of the amazing West Coast views making for a relaxing retreat.

Meals included: Breakfast



Day 10



Hokitika to Arthur's Pass National Park

Head north from Hokitika for the short drive to State Highway 73 and Arthur's Pass. If you have time for a side trip, instead of turning onto State Highway 73, continue north for an hour to the fascinating Punakaiki Rocks, following the spectacular West Coast. To get back to Arthur's Pass go back the way you came and turn inland on State Highway 73. State Highway 73 is the main road between the West Coast and Christchurch and the scenery is spectacular - even in the rain - and there is pretty good chance of rain in the high alpine mountains. With hundreds of waterfalls cascading down the bush clad hillsides it's not a road to be rushed. Originally the road was a pass used by Maori as they made tier seasonal passage to look for the greenstone abundant in the West Coast mountains. When the gold rush hit the West Coast in the late 1800's then a road was quickly developed and not soon after the train. Today the main use for the track is transporting coal to Lyttelton Harbour but once a day the now world famous TranzAlpine Scenic Train takes a few hundred tourists and visitors between the two oceans. The Otira Gorge on the Western side of Arthur's Pass features a remarkable piece of engineering with the road passing high on a viaduct through this large valley. This is a recent addition to the route as the old road was washed away in a rock fall a few years ago. There are numerous lookout points giving great views of the valley and its engineering feat but watch out for the local residents, the kea. this bird is the worlds only alpine parrot and can be extremely cheeky. Arthur's Pass Township is bustling place in the peak season with many walkers and adventurers using it as a base for the forays into the mountains of Arthur's pass National Park. The Department of Conservation centre here has an excellent display of the local history and is a great source of information for the many short walks in the area.

Arthur's Pass to Kaikoura

Travelling from the Southern Alps to the Coast, this drive offers spectacular views of braided river valleys. You'll travel through Castle Hill Scenic Reserve, dotted with remarkable rocky outcrops, popular for hiking.

Descending onto the Canterbury Plains, you'll travel through the rich farmland surrounding Christchurch before turning North through the small towns of Rangiora and Oxford. You'll then travel on State Highway 1 through the Waipara Valley. If you have plenty of time be sure to stop at Hanmer Springs for a soak in the hot mineral pools.

The road hugs the coast for the final stretch of this drive, before arriving at your destination, Kaikoura. Keep a lookout for dolphins as they are often seen swimming just off the coastline as well as New Zealand fur seals basking by the roadside.

Your accommodation: Kaikoura Boutique Hotel

Kaikoura Boutique Hotel sits on the Esplanade overlooking Kaikoura's waterfront, just a short walk from tourist attractions, shops and cafes. The hotel has been lovingly refurbished with modern décor and a uniquely New Zealand design.

Meals included: Breakfast



Day 11



Kaikoura to Blenheim

Heading north from Kaikoura, the road hugs the shore for approximately 50 kilometres and offers many opportunities to view the native wildlife such as seabirds and New Zealand fur seals. One of the best seal watching locations is Ohau Point (25km north of Kaikoura), where you can observe the adults on the shoreline and the pups frolicking in the waterfall, just a short walk from the road (signposted). As you drive you will have turquoise waters of the South Pacific Ocean to your east and to the west the towering Kaikoura Ranges. Crossing the dry hills of the Marlborough ranges you head towards Marlborough, New Zealand's largest wine producing region. Blenheim sits right at the heart of Marlborough and is ideally located to enjoy an afternoon sampling the local produce. A great way to do this is to take a guided wine tour with Sounds Connection Wine Tours.

Ocean's Cabin with Whale Watch Kaikōura

Experience New Zealand's only marine-based whale-watching company. Whale Watch Kaikōura offers a once-in-a-lifetime, up-close encounter with the giant Sperm Whale. You are also likely to encounter New Zealand fur seals, dolphins, and albatross. Depending on the season you may also see Pilot, Blue, and Southern Right whales as well as migrating humpbacks. Often orcas can be spotted here and the world's smallest dolphin, the Hector's, occasionally makes an appearance.

SUGGESTED ACTIVITY - Zipline & Native Forest Tour with EcoZip Kaikoura

Enjoy a scenic journey to Kaikōura's beachfront airfield, followed by a 4WD adventure crossing the braided Kahutara River to Rakanui Station. Take in panoramic views of rolling farmland, lush valleys, and snowcapped mountains before embarking on an exhilarating 5-zipline course, including twin lines for side-by-side rides. Learn fascinating local history from expert guides and enjoy a walk through native forest, with a chance to plant a tree during winter as part of Eco Zip's conservation program. An unforgettable eco-adventure awaits! It is important you read and understand the risks associated with this activity before travel. For more information, please see [here](#)

Your accommodation: Carnmore Chateau Marlborough

Carnmore Chateau Marlborough offers luxury accommodation in the heart of Blenheim, one of New Zealand's most famous wine regions. This boutique hotel prides itself on offering guests luxury accommodation with enviable attention to detail, overlooking Seymour Square Gardens and is just a short walk from Blenheim's town centre.

Meals included: Breakfast



Day 12



Blenheim to Picton

The short drive from Blenheim to Picton takes you through more wine-growing regions and the valley to the west of the Robertson Range. Picton is a port town and it's here that the Interislander ferries arrive and depart. The town centre is quite small with plenty of shops and cafes and the waterfront area is a very pleasant place to spend a few hours watching the activity of the ships. The Edwin Fox Maritime Centre on the wharf is worth a visit with the star attraction being the vessel the Edwin Fox, reputedly the 9th oldest ship in the world. The hills to the west of Picton are the start of Queen Charlotte Drive, a very picturesque road to Havelock and Nelson that winds its way along the shores of the sounds.

Interislander Ferry Picton to Wellington

The 92 km journey between Picton and Wellington takes around 3 hours and has been described as 'one of the most beautiful ferry rides in the world'. Around one hour of the cruise takes you through the Marlborough Sounds. This region of bush covered mountains, small islands, crystal clear waters and secluded bays offer remarkable photographic opportunities.

From the Cook Strait, spectacular views of the Kaikoura Ranges on the South Island can be enjoyed and often dolphins and sea birds are seen. After crossing the strait you approach Wellington Harbour and pass many interesting points such as Pencarrow Head on top of which is New Zealand's oldest lighthouse (1859). Red Rocks is home to a seal colony and Oterangi Bay is the site which recorded the country's highest ever wind speed of 268 kph (167 mph).

SUGGESTED ACTIVITY - Premium Lounge with Interislander

Escape to Interislander's Premium Lounge for sensational views, child-free serenity, and locally sourced food and drink.

Interislander's Premium Lounge has enhanced its offering to bring you an elevated travel experience across Cook Strait. Enjoy delicious food and drink, attentive service, and prime positions for appreciating the spectacular views. Whether you're looking to relax or chat with your travel companions, the Premium Lounge provides the ideal space. With varied seating options, you can choose a cozy spot to watch the stunning scenery and taste a selection of seasonal snacks included in your ticket.

Collect Rental Car

This tour's from price includes an intermediate-sized vehicle, setting you up for comfortable travels. Yet, we understand every adventure is unique! Feel free to select the perfect wheels from our incredible collection of rental cars, spanning from economy hatchbacks to premium SUVs.

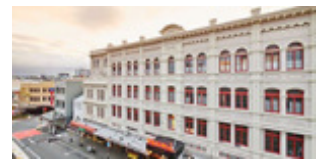
Wellington

Wellington known in Māori as Te Upoko o Te Ika a Maui is home to New Zealand's centre of government. Often referred to as 'mini Melbourne', this windy city is a melting pot of art, culture, food, and fashion. Quirky laneway bars, underground art shows, and hipster eateries make up its inner-city vibe, while a host of sandy beaches outside the urban bustle bring a cheerful holiday feel. Head to Te Papa Museum for a history lesson and a ticket to one of its many international exhibitions or jump aboard the Wellington Cable Car - the only running funicular railway in the country. For those with an eye for boutique, fashion wander through Cuba St to sample some of the city's best vintage stores. Break for coffee at a hipster cafe and be sure to snap a pic outside the 'Beehive,' New Zealand's parliamentary debate chamber. Go behind the scenes at Weta Workshop Experience, the Oscar Award Winning design studio behind Lord Of The Rings, The Hobbit, and Avatar. If you're a foodie at heart, a two-hour round trip to Martinborough is a must-do. Take your time as you wind through spectacular wine country. For an educational day out, learn about New Zealand's native species at Zealandia, the world's first fully-fenced eco-sanctuary and home to over 40 types of endangered and native birds.

Your accommodation: Naumi Hotel Wellington

Naumi Studio Wellington, an iconic heritage landmark in the heart of the Cuba Street precinct. After an extensive renovation, this 116-room property has transformed into visual feast for the senses, enthralling guests with eclectic spaces inspired from seafaring, the library world and enduring love.

Meals included: Breakfast



Day 13



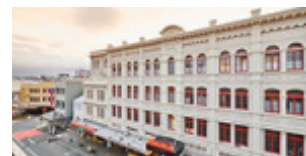
Explore Wellington

Wellington, known in Māori as Te Upoko o te Ika a Maui ("The Head of the Fish of Maui") or Te Whanganui a Tara ("The Great Harbour of Tara"), is New Zealand's vibrant capital. Often called a 'mini-Melbourne', this cosmopolitan city blends art, culture, food, and fashion with quirky laneway bars, hip eateries, and underground art shows. Stroll the waterfront to Te Papa, New Zealand's national museum, or ride the historic cable car from Lambton Quay for stunning city views. Explore Cuba Street's unique boutiques and visit the iconic 'Beehive' at Parliament. Fans of The Lord of the Rings can tour Weta Workshop, the Oscar-winning design studio behind Middle-earth. Just an hour away, Martinborough offers a culinary escape with top-notch food and wine. Nature lovers can't miss Zealandia, the world's first fully fenced eco-sanctuary. End your day sampling Wellington's renowned dining scene—search 'Metro Eats' for the city's best spots.

Your accommodation: Naumi Hotel Wellington

Naumi Studio Wellington, an iconic heritage landmark in the heart of the Cuba Street precinct. After an extensive renovation, this 116-room property has transformed into visual feast for the senses, enthralling guests with eclectic spaces inspired from seafaring, the library world and enduring love.

Meals included: Breakfast



Day 14



Wellington to Napier

Leaving Wellington today you will first pass the Wairarapa on the eastern side of the Remutaka Ranges. A significant contrast to the hills of Wellington, it's rich pastures and boutique vineyards of Martinborough give way to grassy plains and rugged coastal shores. Go through Greytown, home to the largest number of wooden buildings in the country then stop in Masterton, a small farming town known for its Golden Shears competition - where shearers compete for the title of fastest shearer. Continue on to Hawkes Bay and Havelock North before arriving in Napier, the art deco capital of New Zealand.

Your accommodation: Art Deco Masonic Hotel

The Art Deco Masonic Hotel occupies a significant historic building on Napier's waterfront and has been richly refurbished in keeping with the Art Deco architecture. With its central location and decadent décor, this is the best place to experience what Napier is famous for.

Meals included: Breakfast



Day 15



Explore Hawkes Bay

Discover Hawke's Bay, known in Māori as Te Matau-a-Māui or the fish hook of Māui. This is a region renowned for its Mediterranean charm, iconic Art Deco architecture, and award-winning wineries. Explore Mission Estate, the birthplace of New Zealand wine, or tour vineyards for a deeper dive into its winemaking legacy. Fans of the 1930s can enjoy a Vintage Car Tour, showcasing Napier's architectural gems. Outdoor enthusiasts can cycle over 200km of scenic trails or unwind at pristine beaches like Ocean and Waimarama. Indulge your taste buds with local delights, from honey and chocolate to fresh orchard produce. The Hawkes Bay is also home to an abundance of wildlife, head out on a Gannet Safari or educate yourself at the National Aquarium of New Zealand.

Your accommodation: Art Deco Masonic Hotel

The Art Deco Masonic Hotel occupies a significant historic building on Napier's waterfront and has been richly refurbished in keeping with the Art Deco architecture. With its central location and decadent décor, this is the best place to experience what Napier is famous for.

Meals included: Breakfast



Day 16



Napier to Rotorua

Cross the Ahiminawa Ranges to arrive into the town of Taupo which is situated on New Zealand's largest lake, Lake Taupo a gigantic volcanic caldera formed during one of the worlds largest eruptions. Just north of Taupo are the Huka Falls, an impressive body of water draining from the Waikato river. See it from the wooden viewing platform or get up close to the spray with a ride on the Huka Jet. Visit nearby volcanic reserve Craters of the Moon to see boiling pools and steaming vents. Continue on through the Waimungu Valley before arriving into geothermal Rotorua, the heart of New Zealands Maori culture.

Your accommodation: The Princes Gate Hotel

The most famous hotel in Rotorua built in 1897 this 107 year old beautiful hotel is privately owned and operated. The Prince's Gate Hotel is not just a hotel but also an attraction and proudly deserves the phrase 'a hotel so good; they built the City around it.

Meals included: Breakfast



Day 17



Explore Rotorua

Peppered with natural hot springs, boiling mud pools and steaming geysers, Rotorua sits within one of the world's most active volcanic regions. Geothermal landmarks aside, this city of sulphur has a rich indigenous history. Home to several prominent Māori tribes, a visit to one of the Māori experiences should be high on your agenda, learn about the special meaning of pounamu-Greenstone with Mountain Jade, explore the geysers and arts of Te Puia or immerse in an evening with Te Pā Tū. An excursion to one of the area's wellness spas is also a must! Try the Polynesian Spa for an invigorating soak in its natural mineral hot springs, Wai Ariki offers an indulging and unwinding restorative journey or pay a quick visit to Secret Spot for a soak and a delicious smash burger!

If it is a thrill you are looking for, spike your adrenaline at Rotorua Canopy Tours, soaring above the ancient native forest below. Alternatively, head up the Skyline Rotorua Gondola for soaring lake views, and ride the luge at night for an extra thrill.

Make the most of your time in Rotorua with an excursion through the Wai-O-Tapu Thermal Wonderland, one of the area's most colourful volcanic attractions. Whatever you are after, Rotorua is almost certain to have it!

Te Pā Tū Evening Māori Cultural Experience - Dinner Included

New Zealand's Most Awarded Cultural Attraction, presenting Te Pā Tū. Feast on song, drama, tradition, and divine seasonal kai (cuisine) within the forest Pā (village) blanketed by towering Tawa trees, blazing bonfires, and a forest-formed amphitheatre. Te Pā Tū shares Māori history, traditions, and cultural aspirations across 4-hours of celebration and feasting. These events change with each season of the Maramataka, the Māori lunar calendar.

Your accommodation: The Princes Gate Hotel

The most famous hotel in Rotorua built in 1897 this 107 year old beautiful hotel is privately owned and operated. The Prince's Gate Hotel is not just a hotel but also an attraction and proudly deserves the phrase 'a hotel so good; they built the City around it.

Meals included: Breakfast



Day 18



Rotorua to Whangamata

Pyes Pa Road is the scenic route towards the Bay of Plenty and the town of Tauranga before heading north along the coast towards the first of the Coromandel towns, Waihi. This old mining town still has an operating open cast gold mine and you can view the workings of the Martha Mine from a vantage point signposted from the town centre. For rail enthusiasts the Goldfields Railway operates passenger trains along a scenic and historic section of track towards Waikino. Next on to your destination, Whangamata. A popular holiday spot for locals with its golden beaches and surf, as well as water activities the surrounding forests have great walks.

Your accommodation: Brenton Lodge

Set in beautifully landscaped grounds, Brenton Lodge offers a relaxing escape near the Coromandel seaside holiday destination of Whangamata. With just 3 suites, you'll enjoy peace and privacy during your stay.

Meals included: Breakfast



Day 19



Whangamata

Whangamatā is a beloved holiday hotspot on the Coromandel Peninsula, famous for its incredible surf breaks. Beyond the exhilarating waves, this vibrant town offers something for everyone, with calm, safe bays perfect for swimming and a sheltered harbour ideal for kayaking and fishing. When you're ready for a break from the water, explore the lush surrounds on one of the many local walks. Trek through verdant rainforests, discover peaceful streams and cascading waterfalls, and uncover fascinating remnants of the area's historic gold mining industry.

Your accommodation: Brenton Lodge

Set in beautifully landscaped grounds, Brenton Lodge offers a relaxing escape near the Coromandel seaside holiday destination of Whangamata. With just 3 suites, you'll enjoy peace and privacy during your stay.

Meals included: Breakfast



Day 20



Whangamata to Auckland

Cross the Coromandel Ranges dropping down to the west coast of the Coromandel Peninsula and the Firth of Thames with steep pohutukawa clad cliffs. Leaving the township of Thames you will pass by the turn off to Miranda, this out of the way spot is a haven for shorebirds. Miranda is a feeding ground for large numbers of wading birds, ornithological societies have censured the numbers and found that 5-6,000 lesser knots and 7-10,000 bar tailed godwits travel here during the summer months before departing to the Siberian and Alaskan feeding grounds. Many more birds can also be found here and the Miranda Shorebirds Centre has lectures and displays.

The shoreline of Miranda itself is also very unique and is considered the finest example in the world of an active sand and chenier plain. The Hunua ranges to the east mark the original shoreline about 4000 years ago and since then continuous tidal and wind action has deposited shell ridges to form the land or coastal plain you see today.

Continue across the fertile Hauraki Plains and rolling Waikato countryside to New Zealand's largest city, Auckland.

Your accommodation: Fable Auckland

Located right on Queen Street the Fable Auckland is boutique and stylish property with an ideal location to enjoy and explore the vibrant heart of the 'City of Sails'.

Meals included: Breakfast



Day 21



Explore Auckland

Perched on the edge of a large natural harbour, New Zealand's 'City of Sails' offers the best of both worlds. Sandy beaches, native bush and lush rainforests give way to a vibrant urban culture, humming with life. Spend time in the Viaduct Harbour, try your hand at sailing an America's Cup yacht or take the ferry to nearby Waiheke Island for a gourmet food and wine experience. If you're looking for a lovely walk, venture to the top of Auckland's highest volcano, Mt Eden, and take in soaring views of the gulf or hop on the short ferry to Rangitoto Island and hike to the top of the volcanic island. Immerse yourself in nature's beauty at the expansive Auckland Botanical Garden's, sprawled across 156 acres of lush land and native forest on Hill Road. Pack a picnic, soak up the sunshine, and delight in the melodious birdsong during a peaceful lunch. Head up to the Sky Tower, standing at just over 300m tall (about 1,000 feet) and have a meal in the 360-degree revolving restaurant. Scale the outermost perimeter of the Harbour Bridge or test your stomach and bungee off both. To end your day, catch a cab to Ponsonby Road and sample some upmarket culinary delights.

Your accommodation: Fable Auckland

Located right on Queen Street the Fable Auckland is boutique and stylish property with an ideal location to enjoy and explore the vibrant heart of the 'City of Sails'.

Meals included: Breakfast



Day 22



Fullers Ferry Auckland to Waiheke Island

Take a scenic approximately 45-minute cruise through the Hauraki Gulf between the Auckland downtown ferry terminal and Matiatia Wharf on Waiheke Island.

Explore Waiheke Island

Waiheke Island is the most visited island in the gulf. A delightful 45 minute ferry ride from downtown Auckland will find you standing at Matiatia Wharf set to enjoy a multitude of diverse attractions. The island is home to around 7,000 people but during the summer weekends there can be as many as 35,000 people enjoying the vineyards, restaurants, cafes, arts and the idyllic scenery. Among the two dozen or so vineyards on the island, Mudbrick, Goldwater Estate, Stoneyridge and Te Whau are some of the best known. The beaches are pristine and the countryside provides many interesting walks. Most notable is the trip to Stoney Batter where you can enjoy breathtaking views of the Hauraki Gulf. The area also has the remains of gun emplacements and a series of tunnels and chambers, protected by the historic places trust.

Your accommodation: The Boatshed

This chic boutique luxury hotel embodies everything that Waiheke Island is, a relaxed intimate island style luxury hotel. Designer suites, each with panoramic views, are luxurious and spacious; an elegant and contemporary take on the classic seaside retreat.

Meals included: Breakfast, Dinner



Day 23



Fullers Ferry Waiheke Island to Auckland

Take a scenic approximately 45-minute cruise through the Hauraki Gulf between Matiatia Wharf on Waiheke Island and the Auckland downtown ferry terminal.

Private transfer Fullers Ferry Terminal to Auckland Airport

A private transfer will meet you on arrival at the Fullers Ferry Terminal and transfer you to the Auckland Airport.

Tour details

Departures:	Daily
Tour type:	Nationwide Self Drive
Starts:	Christchurch
Finishes:	Auckland
Tour length:	23
Accommodation:	Boutique Lodges & Hotels
Car/transport type:	

Included activities

Includes	8 dinners
Includes	All breakfasts
Includes	Private airport transfers
Includes	Interislander ferry crossing
Includes	Mitai Maori Village Concert & Buffet Dinner, Rotorua
Includes	Sir Edmund Hillary Alpine Centre explorer pass, Mt. Cook
Includes	Glacier Explorers Tour, Mt Cook National Park
Includes	TSS Earnslaw cruise and dinner at Walter Peak high country farm, Queenstown
Includes	Queenstown Skyline Gondola with dinner
Includes	Real Journeys Milford Sound Cruise
Includes	Franz Josef Glacier heli-hike
Includes	Entry to Glacier Hot Pools

Accommodation summary

Day 1	The Muse Christchurch
Day 2	Hermitage Hotel, Aoraki Wing Premium
Day 3	Fiordland Lodge
Day 4	Fiordland Lodge
Day 5	Queenstown House B&B Apartments
Day 6	Queenstown House B&B Apartments
Day 7	Legacy Te Waonui Hotel Franz Josef
Day 8	Legacy Te Waonui Hotel Franz Josef
Day 9	Rimu Lodge
Day 10	Kaikoura Boutique Hotel
Day 11	Carmore Chateau Marlborough
Day 12	Naumi Hotel Wellington
Day 13	Naumi Hotel Wellington
Day 14	Art Deco Masonic Hotel
Day 15	Art Deco Masonic Hotel
Day 16	The Princes Gate Hotel
Day 17	The Princes Gate Hotel
Day 18	Brenton Lodge
Day 19	Brenton Lodge
Day 20	Fable Auckland
Day 21	Fable Auckland
Day 22	The Boatshed