



## Ski the South Island Tour

Starting in the Alpine Village of Tāhuna-Queenstown. Home to The Remarkables and Coronet Peak. From here pass through the Crown Range and hit up Cardrona, New Zealand's largest ski area and Treble Cone famous amongst the locals. Leaving the big fields behind, it's time to explore the southern Club Fields or "Clubbies" as they're known in NZ. Ohau and Roundhill offer outstanding views of the Mackenzie basin and it's turquoise lakes below. Mt Dobson has an array of natural features which make it a haven for skiers of all levels. Your ski tour concludes at Mt Hutt before departing from Christchurch.

Starts in: Queenstown  
 Finishes in: Christchurch  
 Length: 14days / 13nights  
 Accommodation: Hotel 3 star  
 Can be customised: Yes

This itinerary can be customised to suit you perfectly. We can add more days, remove days, change accommodations, mix it up, add activities to suit your interests or simply design and create something from scratch. Call us today to get your custom New Zealand itinerary underway.



### Inclusions:

Includes: Late model rental cars  
 Includes: Fully inclusive rental car insurance (excess may apply)  
 Includes: Unlimited kms  
 Includes: Afterhours emergency support while touring  
 Included activity: 6 Day Lift Superpass with NZ Ski  
 Included activity: Cardrona & Treble Cone - 2 Day Lift Pass

## Day 1



### Collect Rental Car

Choose a car to best suit your needs from our fantastic rental car range. From compact economy, hatchbacks to prestige SUVs.&nbsp;

### Arrive in Queenstown and collect your NZSki MyPass

Queenstown is the perfect destination for your winter ski or snowboarding holiday. Immerse yourself in breathtaking scenery, exhilarating adventures, and endless off-slope activities. We recommend you collect your NZSki MyPass Card prior to arriving on the mountain to avoid the morning queues, leaving you more time to ski and ride. You can collect your MyPass Card at the Queenstown Snow Centre located at 25 Shotover St. All of your lift passes, rental equipment, lessons and shuttle transfers will be loaded onto your card. If you are unable to visit Guest Services and collect your MyPass in advance, please scan the barcode in your Order Confirmation at the Self-Service Kiosks located in the base buildings at Coronet Peak, The Remarkables and Mt Hutt or in the Queenstown Snow Centre. The kiosk will print MyPass cards for your entire group, allowing you to head straight to the lifts!

### Your accommodation: Heartland Hotel Queenstown

The Heartland Hotel Queenstown is the ideal place to stay if you want to be close to all the action of Queenstown's main centre, yet be elevated enough to take advantage of the spectacular views over Lake Wakatipu to the mountains.



## Day 2



### 6 Day Lift Superpass with NZ Ski

The New Zealand Superpass is the most flexible lift pass in New Zealand, giving you access to Coronet Peak, The Remarkables, Mt Hutt along with Snowplanet, Turoa, Whakapapa, Porters, Roundhill, Mt Dobson, and Ohau ski areas. Get more choice, more fun, and more snow time with your New Zealand Superpass, and make the most of your New Zealand holiday!

With 6 days of New Zealand Superpasses, you've got lift access to New Zealand's premier ski areas plus the fun and excitement of a range of off-mountain attractions around New Zealand. You can mix it up a little and ski a day at the different alpine resorts or maybe you've got your eye on a run that you want to conquer over 6 days. Want to ski a little longer, don't own your own gear or snow clothing, or not sure if your skills are up to scratch? No worries, chat to us about adding additional days, rentals, or lessons.

### The Remarkables Ski Field

The Remarkables offers a laid-back atmosphere which is fantastic for families and those new to skiing or snowboarding. Located just 45 minutes from Queenstown, the Remarkables features a fantastic network of trails with wide, gentle slopes for beginners of all ages and big mountain runs for the experts in the family. With 30% beginner slopes, 40% intermediate and 30% advanced, the Remarkables offers challenges for all levels. For those wanting to progress quickly, the friendly team of instructors can be with you every step of the way. While you're up there don't forget to check out the purpose-built snow tubing lanes before you round off with a steaming hot chocolate or drink at Remarkables cafe. With regular shuttles from Queenstown, lessons for 4yrs+ and complete gear hire on the mountain, this is a fun and easy day out for visitors to the South Island.

### Your accommodation: Heartland Hotel Queenstown

The Heartland Hotel Queenstown is the ideal place to stay if you want to be close to all the action of Queenstown's main centre, yet be elevated enough to take advantage of the spectacular views over Lake Wakatipu to the mountains.



## Day 3



### Queenstown to Coronet Peak Ski Field

The drive from Queenstown to Coronet Peak is a scenic 20-kilometer journey taking around 20-30 minutes. Follow Gorge Road through Arthurs Point, then turn left onto Coronet Peak Road, which winds up to the resort. Allow extra time during peak season, check road conditions beforehand, and consider the ski bus for a hassle-free trip. The road to the ski field is a sealed alpine road, snow chains must be carried. Don't forget to enjoy the stunning mountain and lake views along the way!

### Coronet Peak Ski Field

Want to challenge yourself on exciting terrain in some of the best conditions in the Southern Hemisphere? Then Coronet Peak should be top of your list. This theme park created by mother nature offers gripping trails and extensive snowmaking facilities, making for complete snow coverage on multiple trails. Coronet is also home to night skiing for a different take on these roller coaster trails try it under lights. For those just getting to know the snow the dedicated learner and novice areas make finding your snow feet easy and all gear can be hired on the mountain. With 25% beginner slopes, 45% intermediate, and 30% advanced, Coronet Peak has the trail for you. For a break from the snow, enjoy live music at the base building, or wet your whistle with a hot chocolate or cold beverage at Heidi's Hut. The pizza and pasta meals are great for warming you up and giving you an energy boost for the afternoon.

### Your accommodation: Heartland Hotel Queenstown

The Heartland Hotel Queenstown is the ideal place to stay if you want to be close to all the action of Queenstown's main centre, yet be elevated enough to take advantage of the spectacular views over Lake Wakatipu to the mountains.



## Day 4



### Queenstown to Wanaka

Leaving Queenstown you head over New Zealand's highest sealed road, Crown Range Road before dropping into Wanaka. During winter months the Crown Range Road experiences alpine conditions, so you need to be prepared before driving this road. As it is New Zealand's highest sealed road it can be prone to ice and snow. There are many signs advising the road conditions so take notice of these or ask locally if the road is fine to be driven that day. The alternative route via the Kawarau Gorge (State Highway 6) is just 20 minutes longer. The golden rule is check and drive to the conditions. If you have snow chains with your rental vehicle please make sure you know how to fit them.

### Cardrona Hotel Dinner

If you feel like spoiling yourself and learning about the area's history we recommend taking yourself out for lunch or dinner at The Cardrona Hotel, one of New Zealand's oldest and most iconic hotels which sits between Queenstown and Wanaka on the stunning Crown Range Road. Nestled in a beautiful mountain valley, the town of Cardrona boasts a rich and vibrant history: settled in the 1860s as hundreds of hopeful prospectors flooded into the valley chasing gold, the Cardrona Hotel was one of four hotels quickly established to offer accommodation, food, livery services and a coaching-stop for miners and travellers. With the short-lived gold mining boom beginning to wind down in the late 1800s, the area quietened down, with the Cardrona Hotel eventually becoming the sole remaining hotel in the valley. In more recent times the township of Cardrona has seen a resurgence in visitors, people clamouring to get a taste of old the old town feel, stopping in for a pint or delicious meal and a few fantastic photo opportunities in the quaint village that harkens back to a time of hope, gold and good fortune.

### SUGGESTED ACTIVITY - Cardrona Distillery Classic Tour

The tour includes a journey through the working distillery and barrelhouse and finishes with a tutored tasting of Cardrona Distillery's artisan spirits.



## SUGGESTED ACTIVITY - Wild Hills Safari with Ridgeline Adventures

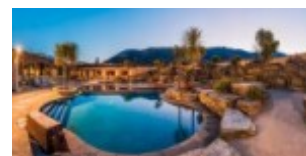
Journey through Mount Aspiring National Park on a full day Jet Boating, walking and 4WD adventure and discover the West Wanaka High Country Station on this spectacular off-road adventure with Ridgeline Adventures. Begin the day with a thrilling Jet Boat on the Matukituki River, one of the most spectacular jet boating rivers in New Zealand. Enjoy a lovely wilderness walk in Mount Aspiring National park before a delicious picnic lunch on the river banks. Later, meet your local Ridgeline Adventure Guide for a 4WD landrover adventure, travelling through the private roads to a genuine New Zealand High Country Farm, West Wanaka Station and get up close to farm animals including Red Deer, Cattle and Sheep.

## SUGGESTED ACTIVITY - Jet Boat and Wilderness Walk with Wanaka River Journeys

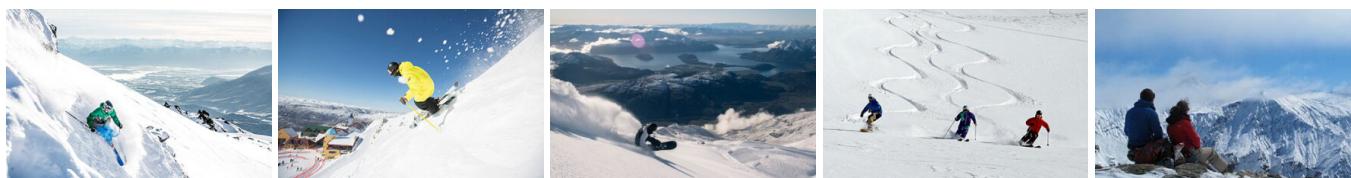
The Matukituki River is one of New Zealand's great jet boating rivers. Powerful and braided, the Matukituki flows from the glaciers and mountains of the Mount Aspiring National Park, part of Te Wahipounamu World Heritage area. Travel past Lord of The Rings film locations beneath stunning views of Mount Aspiring and Glaciers on this half day, glacier focused jet boat journey. During several photo stops on the river, learn from your guide how this amazing landscape was carved by ice and of Maori heritage special to this area. Deep in the mountains, disembark for a 50 minute wilderness walk into native beech forest, beneath the towering mountains and waterfalls of the Matukituki Valley. This is a great introduction to the New Zealand wilderness while walking easy terrain suitable for people of all ages.

## Your accommodation: Oakridge Resort Wanaka

Situated just 3 kilometres from Lake Wanaka, Oakridge Resort is surrounded by beautiful mountains. A relaxing place to stay with an extensive range of facilities including self-catering deluxe apartments, Sanctuary Day Spa and 9 outdoor heated pools. Wanaka township is only a 15 minute walk away.



## Day 5



## Cardrona & Treble Cone - 2 Day Lift Pass

Cardrona is New Zealand's fun and family-friendly ski resort with the most reliable snow conditions in the region. Its high elevation and southerly aspect mean dry natural snow is plentiful, which is further enhanced by snowmaking facilities. Cardrona is the perfect place for beginners and intermediates, with NZ's only combined gondola chairlift, easy-to-use surface lifts, specialised beginner packages and plenty of wide open trails spread over three basins. If you're up for a challenge, you'll find it in Arcadia, with secret powder stashes, chutes and cliff drops.

This pass also allows access to Treble Cone Ski Field, the largest ski area in NZ's South Island. It is famous for its long, uncrowded groomed runs, legendary off-piste terrain and unrivalled views over Lake Wanaka and the Southern Alps. Located just a 35-minute scenic drive from Wanaka and a 90 minute drive from Queenstown via the Crown Range road.

## Wanaka to Cardrona Ski Field

Make your way to the Cardrona Ski Field, passing through the beautiful Cardrona Valley. The 14km Cardrona mountain road is unsealed and offers three parking areas near the base building. For those looking for a slightly shorter drive, the Valley View car park is available before the summit, though access is only recommended for intermediate skiers. For your safety, it's essential to carry tire chains at all times when driving on mountain roads, as weather and road conditions can change rapidly.

You may like to consider riding the free mountain shuttles. Ideal for those unfamiliar with mountain roads, looking to save on fuel, or simply wanting a relaxing ride, the shuttles require no bookings. Park at the designated lot located approx. 1km from the base of the mountain road and hop on the next available shuttle.

## Cardrona Alpine Resort

Located near Queenstown and Wanaka, this ski resort boasts stunning Southern Alps scenery, extensive ski and snowboard terrain, and world-class facilities. Perfect for families, beginners, and seasoned pros, Cardrona offers everything from gentle learner slopes to thrilling freestyle parks and backcountry trails. Enjoy a vibrant après-ski scene and access to 600ha of terrain from 6 chairlifts.

## Your accommodation: Oakridge Resort Wanaka

Situated just 3 kilometres from Lake Wanaka, Oakridge Resort is surrounded by beautiful mountains. A relaxing place to stay with an extensive range of facilities including self-catering deluxe apartments, Sanctuary Day Spa and 9 outdoor heated pools. Wanaka township is only a 15 minute walk away.



## Day 6



### Wanaka to Treble Cone Ski Field

Leaving on Mt Aspiring Road you will drive along the shore of Lake Wanaka to the base of the Treble Cone Ski Field.

### Treble Cone Ski Field

Treble Cone, the largest ski area in NZ's South Island, is famous for its long, uncrowded groomed runs, legendary off-piste terrain, and unrivaled views over Lake Wanaka and the Southern Alps.

Once you know your way around Home Basin, time to head out wide and explore Matukituki Basin, be sure to stop out there and take in the spectacular views of the Southern Alps and down to Lake Wanaka.

### Your accommodation: Oakridge Resort Wanaka

Situated just 3 kilometres from Lake Wanaka, Oakridge Resort is surrounded by beautiful mountains. A relaxing place to stay with an extensive range of facilities including self-catering deluxe apartments, Sanctuary Day Spa and 9 outdoor heated pools. Wanaka township is only a 15 minute walk away.



## Day 7



### Wanaka to Lake Ohau

Passing through the Clutha River valley you arrive into Tarras just north of Lake Dunstan, a man made lake that is part of the South Islands hydro systems. Bendigo, just off the main highway, was one of Otago's original gold mining settlements and well marked paths will guide you to explore the remains of stone cottages and other buildings from this bygone era.

The Lindis Pass is one of New Zealand's highest roads with the summit reaching 971 metres. The tussock covered hills offer an unusual contrast as you pass from Central Otago and onto the Mackenzie Basin. Omarama translates to 'the Place of Light' and the vast open sky offers an explanation to its name. It is also the gliding capital of New Zealand offering some of the best and most challenging terrain in the country to experience this sport.

A short drive from Omarama and you turn into Lake Ohau Road which leads to Lake Ohau Lodge. Along the way a stop at the High Country Salmon Farm just south of Twizel is recommended. Here you can sample some of the freshest salmon available and also feed the fish. Your destination of Ohau is a fantastic base for skiing the Ohau skifield and in summer you can cycle sections of the Alps to Ocean bike trail or explore some of the many hiking tracks in the area.

### Ohau Snow Fields

Ohau Ski Area caters for all skiing and snowboarding abilities and offers a breath-taking backdrop of the Southern Alps and Lake Ohau below. For beginners, the snow mat takes you to gentle slopes for learning and you can book lessons with the friendly Ohau instructors. Intermediate skiers and boarders are well looked after with 50% of the terrain graded intermediate. Take the double chair lift to the top of the mountain where you'll ride wide flat slopes down the Boulevard with style. For those looking for more of a challenge, hiking around the tops to access the best powder snow is definitely worth it, not to mention the unbelievable views. Wanting to practice your tricks there are 2 terrain parks, 1 for beginners and an intermediate/advanced park. When you're ready for a break the day lodge is a cosy space with a log burner, large social tables and the onsite cafe; offers great food and coffee.

### Your accommodation: Lake Ohau Lodge

Lake Ohau Lodge sits overlooking Lake Ohau with a magnificent mountain backdrop. The onsite restaurant and comfortable rooms make this a relaxing base to explore the ski field or walking and biking tracks.



## Day 8



### Lake Ohau to Mt Cook National Park

Follow the lake edge back towards the main road, then turn left towards Tekapo. Your first stop today should be the visitor centre on the southern shores of Lake Pukaki. As well as a great presentation detailing the formation of the region over thousands of years you are also often rewarded with uninterrupted views of over 50 kilometres to the peak of Aoraki Mt Cook (clouds permitting of course). You will then head south along the spectacular Mt Cook Highway to Mt Cook Village. There are many activities available from scenic ski plane or helicopter flights with glacier landings to kayaking on a glacial lake and a host of walks to suit all abilities. At The Hermitage Hotel the Sir Edmund Hillary Alpine Centre is a must see.

---

### SUGGESTED ACTIVITY - Glacier Explorers

Experience 500-year-old icebergs up close on the Aoraki-Mt Cook terminal lake. The Glacier Explorers tour is the only one of its kind in New Zealand and one of only three in the world! Very few glaciers terminate into lakes and even fewer of them are accessible. See towering ice cliffs and floating icebergs from the safety of a specially designed boat. These boats provide a safe way to view unseen and inaccessible areas of New Zealand's largest glacier The Tasman.

---

### SUGGESTED ACTIVITY - Alpine Explorer Heli Flight and Snow Landing with The Helicopter Line

Experience this magnificent alpine environment with a 35 minute flight over the Ben Ohau Mountains. Fly close to the steep ridges and rise over a mountain pass which reveals superb views out to Aoraki/Mount Cook and its surrounding peaks. Prepare yourself for an amazing alpine landing where you will be able to step out of the helicopter and play in the snow. Should weather not be suitable to take this flight you are able to transfer your booking onto a similar tour on any of the Helicopter Line's operations in Queenstown or Mt Cook.

---

### SUGGESTED ACTIVITY - The Adventurer: Tasman Glacier Heli Hike with Mount Cook Glacier Guiding

The adventure begins with a breathtaking scenic flight, experience the thrill of the helicopter as you look out over Mt Cook and the spectacular views of the Alps surrounding the glaciers. Landing on a remote part of the glacier, your guide will equip you with all the gear ready to explore ice formations in this ever-changing environment at the heart and birthplace of New Zealand mountaineering. Walking through the untouched formations and specially cut steps - You'll return home with incredible memories of your Tasman Glacier hike in this vast mountain landscape. It is important you read and understand the risks associated with this activity. For more information please see [here](#)

---

### Your accommodation: Hermitage Hotel Room Mount Cook View

The Hermitage Hotel ringed by magnificent snow-capped peaks of the Southern Alps, is a world-renowned tourist destination and has been an icon of superior accommodation and dining since 1884.



---

## Day 9



### Aoraki Mt Cook National Park to Lake Tekapo

Your first stop today should be the visitor centre on the southern shores of Lake Pukaki. As well as a great presentation detailing the formation of the region over thousands of years you are also often rewarded with uninterrupted views of over 50 kilometres to the peak of Aoraki Mt Cook. Lake Tekapo, the northern most of the large Southern Lakes also the reflective quality that Pukaki has making the waters a bright turquoise on certain days. This busy little township is home to some of the most photographed subjects in the country, the Church of the Good Shepherd and the Collie Dog statue. It's a great place to take a scenic flight, enjoy a guided horse trek, a boat trip on the pristine lake or just enjoy the magnificent views.



## Roundhill Ski Area

Roundhill Ski Area is a laid-back, locally loved ski field overlooking the turquoise waters of Lake Tekapo. It's a great spot for families and beginners, with wide, forgiving slopes and a friendly, welcoming vibe. For those chasing a challenge, the Heritage Express rope tow opens up a huge backcountry playground with epic views of Aoraki Mount Cook. Roundhill combines big mountain scenery with a relaxed, no-fuss atmosphere, making it one of Canterbury's best-kept winter secrets.

### SUGGESTED ACTIVITY - Tekapo Springs Hot Pools

Tekapo Springs offers three adjoining main Hot Pools for you to sit back, relax and enjoy yourself while looking out to the beautiful Two Thumb range and stunning Lake Tekapo. Pool temperatures range from forty degrees celsius to thirty-six degrees celsius and each pool offers something different - massage jets to assist in taking away any aches and pains and fountains to splash under.

### Your accommodation: Ranginui Bed & Breakfast

Ranginui is a purpose built luxury B&B with uninterrupted views of Lake Tekapo and the southern alps. Each room has an ensuite with underfloor heating and towel rails, a private balcony to watch the sunrise or set and a guest dining/lounge area with different seating options.



## Day 10



### Lake Tekapo to Mt Dobson Ski Area and return

Leaving Lake Tekapo you descend from the high country through Burkes Pass and into rich farmland surrounding the access road to Mt Dobson Ski Area. The 15km access road is maintained to a high standard and it's a 40 minute drive from State Highway 8 to the ski field car park.

### Mt Dobson Ski Area

This mountain is famous for its all-day sun, stunning scenery, groomed trails and awesome off-piste... what more could you ask for? Mt Dobson or "Dobbo" as it is known to the locals, has that laid-back and friendly Kiwi vibe, along with some cool features like the large natural half-pipe and miles of untracked snow. Mt Dobson is a definite treat for those wanting to explore uncrowded trails. A rope tow, platter, T-Bar and triple chairlift provide access to a variety of intermediate and advanced runs serving 14 trails over an area of 400 hectares.

### SUGGESTED ACTIVITY - Dark Sky Project - Crater Experience

Navigating your way through the Southern Sky using various telescopes and the naked eye, you will see amazing sights such as our own Milky Way Galaxy, the Southern Cross, Alpha-Centauri - our closest neighbouring star at only 4.3 light-years away, and Sirius - the brightest star in our sky. Behold and learn about our closest neighbouring galaxies, the Magellanic Clouds, which grace our night sky along with constellations such as Orion the Hunter and Scorpius. You may also have the opportunity to see star clusters like the beautiful Jewel Box; awe-inspiring planets; nebulae, immense clouds of gas and dust; and distant galaxies which test the limits of human imagination.

### Your accommodation: Ranginui Bed & Breakfast

Ranginui is a purpose built luxury B&B with uninterrupted views of Lake Tekapo and the southern alps. Each room has an ensuite with underfloor heating and towel rails, a private balcony to watch the sunrise or set and a guest dining/lounge area with different seating options.



## Day 11



## Lake Tekapo to Methven via the Inland Scenic Route

Heading north east through the fertile regions around Fairlie and Geraldine the drive from Lake Tekapo to Methven takes you along the Inland Scenic Route, a well signposted and recognised alternative to the main highways. The route travels close to the foothills of the Southern Alps before arriving into Methven. The region is renowned for its outdoor adventure and during winter as the hub for activities such as skiing at Mt. Hutt and heli-skiing in the backcountry.

---

### Explore Methven

Methven, situated on the Inland Scenic Route 72, is both a summer and winter adventure wonderland. In winter the small rural village is bustling with people intent on spending as much time on the slopes of Mt Hutt ski field. When the snow melts, other activities take prominence, including walking, hot pools, hot air-ballooning or jet boating. Methven provides a good range of eating establishments and is a friendly town to spend some time in during your travels.

---

### SUGGESTED ACTIVITY - Braemar Station Backcountry Tour with Tekapo Adventures

Enjoy a remote backcountry Scenic 4WD Tour through one of New Zealand's most beautiful High Country Stations of The Mackenzie Country. Private access to Braemar Station offers guests the best views of unique landscapes and incredible scenery overlooking Mt Cook, Mt Tasman, Lake Pukaki and the Ben Ohau mountain range. Journey through remote 4WD tracks, across some of the most unforgettable High Country and experience the heart of Tekapo's backcountry landscapes at their finest. It is important you read and understand the risks associated with this activity. For more information please see [here](#).

---

### Your accommodation: Brinkley Resort Methven

Nestled into the foothills of majestic Mt Hutt, surrounded by the perfect mixture of nature and a range of exhilarating recreational and pleasure activities at this Qualmark 4 star property.



---

## Day 12



### Methven to Mt Hutt Ski Field

Mt Hutt Ski Field is just 26km from Methven. After leaving the Methven township, you will drive a short distance through Canterbury countryside until you reach the well-signposted access road to Mt Hutt ski field. After your day in the snow, you will return to Methven on this same route.

---

### Mt Hutt Ski Field

Mt Hutt has been voted New Zealand's best ski resort for seven years running at the World Ski Awards. A true alpine experience, with wide-open terrain, leg-burning runs, monster snowfalls, and spectacular views. You've not skied in New Zealand until you've skied Hutt!

Mt Hutt is your go-to for epic freestyle skiing and snowboarding with four terrain park zones featuring jumps and features for all abilities and with the Summit chairlift is an easy way to access great backcountry riding and skiing.

Mt Hutt offers 365 hectares of skiable terrain for you to explore, with the longest run, a lengthy 2km. With its mixture of 25% beginners, 50% intermediate, and 25% advanced terrain there is a range of trails for everyone to conquer. Food and beverages are available at Sixteen10 Espresso Bar, Ski High Cafe, and Opuke Kai which offers mulled wine and an a la carte experience on the mountain, where you can recharge your batteries for your next run. For visitors to the South Island, it's easy to hire all the gear you need on the mountain, so all you need to bring is your enthusiasm. For the littlies, there is a licensed child's creche for 3 months to 5yrs and a snow sports school for both kids and adults who are finding their snow legs.

---

### Your accommodation: Brinkley Resort Methven

Nestled into the foothills of majestic Mt Hutt, surrounded by the perfect mixture of nature and a range of exhilarating recreational and pleasure activities at this Qualmark 4 star property.





## Day 13



### Methven to Christchurch

Follow the inland scenic route across the Rakaia Gorge taking time to stop and enjoy the spectacular views of the river. The tiny villages of Windwhistle, Glenroy and Glentunnel guide you towards Darfield, a larger agricultural service centre and then onto the city of Christchurch.

---

### SUGGESTED ACTIVITY - Willowbank Wildlife Reserve

Nowhere else in New Zealand will you find such a wide range of New Zealand wildlife so close to you. Willowbank provides you with a "Kiwi Guarantee" and is home to New Zealand's largest and most accessible Kiwi viewing area. With this unique experience, you will see New Zealand's natural splendor firsthand, and view Kiwis that are not hidden behind glass.&nbsp; You will explore one of the most complete selections of New Zealand native and introduced wildlife in natural bush surroundings. Much of the Willowbank wildlife wander free and can be petted and fed.

Choose to explore the reserve yourself, or for an up-close Kiwi experience, you can take a guided tour.

---

### SUGGESTED ACTIVITY - Ōtāutahi Culture Walk with Amiki Cultural Food Tours

Your guide introduces the meaning behind the name Ōtāutahi and follows in the footsteps of the ancestors, sharing many traditional Māori and settler stories and ways of life. They will also introduce our guiding principle of manaakitanga, including our whakataukī, "Kia atawhai ki te iwi"&mdash;Care for your people. Your guide will also teach you a traditional Māori greeting. As you walk past traditional mahinga kai (food gathering) and historical pā (Māori village) sites, they bring to life the stories of the past and present and how they have been woven into our emerging city.

---

### SUGGESTED ACTIVITY - Wine Matched Dinner Onboard the Christchurch Restaurant Tram

A truly unique dining experience in the heart of Christchurch. You'll board New Zealand's only dining tram for an unforgettable moving four-course restaurant experience. Enjoy a curated fine dining-style menu with matching wines while taking in the city sights on your journey through the streets of central Christchurch. Lasting two to two and a half hours, you'll complete 2.5 circuits of the city tram route passing New Regent Street, the Avon River, High Street, and Victoria Square.

---

### Your accommodation: Scenic Hotel Cotswold

The Scenic Hotel Cotswold is just a few minutes walk to boutique shopping at Merivale and Hagley Park. The distinctive architecture of the Scenic Hotel Cotswold reflects Christchurch's image as the most English of cities outside of England.



---

## Day 14



### Return Your Vehicle to Christchurch Airport

It's time to return your rental car and let the South Island journey come to an end. If time allows spend the day exploring more of Christchurch, we'd suggest a leisurely drive up the Port Hills for some great sites and then over to the harbour of Lyttleton, before circling through the tunnel and back to the airport to continue your journey home.&nbsp;

---

### Farewell from Aotearoa-New Zealand

Bid farewell to New Zealand, taking with you unforgettable memories of its breathtaking landscapes and incredible adventures. In Maori, it is said mā te wā, which is not goodbye, it is see you soon!

## Tour details

Departures:	Daily
Tour type:	South Island Self Drive
Starts:	Queenstown
Finishes:	Christchurch
Tour length:	14
Accommodation:	Hotel 3 star
Car/transport type:	

---

## Included activities

Includes	4 day lift pass
----------	-----------------

---

## Accommodation summary

Day 1	Heartland Hotel Queenstown
Day 2	Heartland Hotel Queenstown
Day 3	Heartland Hotel Queenstown
Day 4	Oakridge Resort Wanaka
Day 5	Oakridge Resort Wanaka
Day 6	Oakridge Resort Wanaka
Day 7	Lake Ohau Lodge
Day 8	Hermitage Hotel Room Mount Cook View
Day 9	Ranginui Bed & Breakfast
Day 10	Ranginui Bed & Breakfast
Day 11	Brinkley Resort Methven
Day 12	Brinkley Resort Methven
Day 13	Scenic Hotel Cotswold