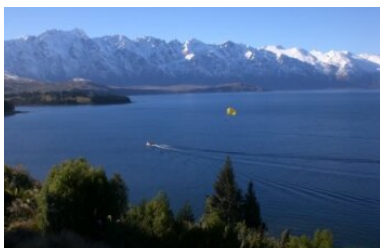


Wellington to Queenstown Explorer Tour

As you cross the Cook Strait on board the Interislander Ferry and enter the Marlborough Sounds, you'll understand why starting your South Island adventure in the North Island city of Wellington was the way to go – you couldn't ask for a better introduction to the natural beauty of the South. Other highlights of this tour include the marine wildlife of the Kaikoura coastline, Mt Cook National Park and the pristine fiord and forest clad mountains of Milford Sound.



Starts in: Wellington
 Finishes in: Queenstown
 Length: 11 days / 10 nights
 Accommodation: Motels
 Can be customised: Yes

This itinerary can be customised to suit you perfectly. We can add more days, remove days, change accommodations, mix it up, add activities to suit your interests or simply design and create something from scratch. Call us today to get your custom New Zealand itinerary underway.



Inclusions:

- Includes: Late model rental cars
- Includes: Fully inclusive rental car insurance (excess may apply)
- Includes: Unlimited kms
- Includes: Afterhours emergency support while touring
- Included activity: Private Transfer Wellington Airport to your Accommodation with In Style Executive
- Included activity: Electronic Travel Guide and In-Country Support App
- Included activity: The Visitor Promise - Cultural Learning Course
- Included activity: Private transfer from Wellington Hotel to Interislander Ferry with In Style Executive
- Included activity: Interislander Ferry Wellington to Picton
- Included activity: Milford Sound Cruise with Real NZ - Lunch Included
- 1 lunch

Day 1



Private Transfer Wellington Airport to your Accommodation with In Style Executive

You will be met on arrival at Wellington airport and transferred to your accommodation.

Welcome to Wellington

Wellington City is New Zealand's capital. It sits on a wonderful deep natural harbour and is surrounded by bush clad hills. The city centre itself is quite compact (only around 1 square kilometre) and so exploring on foot is relatively easy. From your city centre accommodation you can easily stroll the cafes and restaurants around Courtenay Place and if you arrive early enough New Zealand's national museum, Te Papa, is also close by.

Your accommodation: Adina CityLife Wellington

Adina CityLife Wellington is a suite style hotel with every amenity required for a comfortable stay, as well as being in a superb location to explore the compact city centre. Situated on Lambton Quay, you'll find the best shopping, tourist attractions and cultural landmarks all within easy walking distance.



Day 2



Explore Wellington

Wellington, known in Māori as Te Upoko o te Ika a Maui ("The Head of the Fish of Maui") or Te Whanganui a Tara ("The Great Harbour of Tara"), is New Zealand's vibrant capital. Often called a "mini-Melbourne," this cosmopolitan city blends art, culture, food, and fashion with quirky laneway bars, hip eateries, and underground art shows. Stroll the waterfront to Te Papa, New Zealand's national museum, or ride the historic cable car from Lambton Quay for stunning city views. Explore Cuba Street's unique boutiques and visit the iconic "Beehive" at Parliament. Fans of The Lord of the Rings can tour Weta Workshop, the Oscar-winning design studio behind Middle-earth. Just an hour away, Martinborough offers a culinary escape with top-notch food and wine. Nature lovers can't miss Zealandia, the world's first fully fenced eco-sanctuary. End your day sampling Wellington's renowned dining scene—search 'Metro Eats' for the city's best spots.

Explore Wellington museums

Discover Wellington's vibrant museum scene, where history, art, and culture collide. Te Papa Tongarewa, New Zealand's national museum, offers immersive exhibits exploring the nation's art, culture, and natural history. The Wellington Museum shares the fascinating stories of the Wellington region. For art lovers, City Gallery Wellington showcases cutting-edge contemporary works from local and international artists. Perfect for all ages, Wellington's museums blend education and inspiration, making them a must-visit in the capital.

Your accommodation: Adina CityLife Wellington

Adina CityLife Wellington is a suite style hotel with every amenity required for a comfortable stay, as well as being in a superb location to explore the compact city centre. Situated on Lambton Quay, you'll find the best shopping, tourist attractions and cultural landmarks all within easy walking distance.



Day 3



Private transfer from Wellington Hotel to Interislander Ferry with In Style Executive

You will be collected from your hotel and transferred to the Interislander ferry terminal in time for your ferry check in.

Interislander Ferry Wellington to Picton

The 92 km journey between Wellington and Picton takes around 3 hours and has been described as 'one of the most beautiful ferry rides in the world'. Leaving Wellington Harbour the ferry passes many interesting points such as Pencarrow Head on top of which is New Zealand's oldest lighthouse (1859). Red Rocks is home to a seal colony and Oterangi Bay is the site which recorded the country's highest ever wind speed of 268 kph (167 mph).

From the Cook Strait spectacular views of the Kaikōura Ranges on the South Island can be enjoyed and dolphins and many sea birds are often seen. Around one hour of the cruise takes you through the Marlborough Sounds and this region of bush covered mountains, small islands, crystal clear waters and secluded bays offer remarkable photographic opportunities. The final leg of the cruise travels through Queen Charlotte Sound before coming to an end in the picturesque town of Picton.

Collect Rental Car

This tour's from price includes an intermediate-sized vehicle, setting you up for comfortable travels. Yet, we understand every adventure is unique! Feel free to select the perfect wheels from our incredible collection of rental cars, spanning from economy hatchbacks to premium SUVs.

Your accommodation: Harbour View Motel

Spacious, self contained accommodation with views of the harbour and marina. Studio units each with its own private balcony, just minutes from the water's edge and a short stroll to town.



Day 4



Picton to Christchurch

From Picton you cross the hills of the Marlborough ranges as you head towards one of the most spectacular coastlines of the South Island, the Kaikōura Coast. The road hugs the shore for around 50 kilometres and offers many chances to view native wildlife such as seabirds and New Zealand fur seals. To the east are the turquoise waters of the South Pacific Ocean and to the west are the towering Kaikōura Ranges. Kaikōura Township is a bustling place with many cafes, restaurants and shops, but the main reason for visiting here is the wildlife. Whale Watch Kaikōura is New Zealand's only marine-based whale-watching company offering visitors an exciting up-close encounter with the Giant Sperm Whale at all times of the year. The drive from Kaikōura to Christchurch continues to follow the spectacular coastline before heading inland and through North Canterbury's major wine region, the Waipara Valley to arrive in Christchurch City.

SUGGESTED ACTIVITY - Christchurch Gondola

In the Heathcote Valley, just a 20-minute drive from the heart of Christchurch City, ride the Christchurch Gondola for nearly a kilometer to the collapsed rim of an extinct volcano, which exploded six million years ago. Take in the spectacular panoramic views of the central city, Lyttleton Harbour, Banks Peninsula, Canterbury Plains, and the distant peaks of the Southern Alps. Wander the summit complex, enjoy a coffee or lunch in the cafe, and choose one of many nature walks to explore or visit the Christchurch Discovery Rice, a dramatic reconstruction of the history of the Port Hills and Christchurch.

Your accommodation: Quality Suites Amore

Amore Motor Lodge is one of the newest motels in Riccarton, Christchurch. The modern, well-appointed studio suites and spacious 2-bedroom apartments provide the ultimate in comfort are fully self-contained. Stay just 100 metres from the Westfield Mall and a short walk to Hagley Park and Riccarton Bush Farmers Market.



Day 5



Christchurch to Aoraki-Mt Cook National Park

Drive through the heart of the South Island, crossing the vast Canterbury plains. Catch your breath in Geraldine before continuing through Fairlie. Ascending Burkes pass you'll come to the picturesque town of Lake Tekapo. Follow the road and take in the view of Aoraki-Mt Cook (New Zealand's tallest mountain) from the shores of Lake Pukaki, known for its glacier fed turquoise blue colour. Continue along the lake to your final destination Aoraki-Mt Cook Village.

SUGGESTED ACTIVITY - Glacier Explorers

Experience 500-year-old icebergs up close on the Aoraki-Mt Cook terminal lake. The Glacier Explorers tour is the only one of its kind in New Zealand and one of only three in the world! Very few glaciers terminate into lakes and even fewer of them are accessible. See towering ice cliffs and floating icebergs from the safety of a specially designed boat. These boats provide a safe way to view unseen and inaccessible areas of New Zealand's largest glacier The Tasman.

SUGGESTED ACTIVITY - Sir Edmund Hillary Alpine Centre Museum and Theatre Explorer Pass with Hermitage

A tribute to New Zealand's Sir Edmund Hillary, a humanitarian, ambassador, and one of the world's greatest explorers. The centre showcases the Aoraki Mount Cook region, the history of climbing, and early transport used throughout the region. This comprehensive museum details the life of Sir Edmund Hillary, the Hermitage, and provides access to the 126-seat custom-designed theatre. Check out the daily film schedule which includes 3D Movies, documentaries, and 360-degree digital dome features.

Your accommodation: Mt Cook Motel

Mt Cook Motel, nestled in the heart of Mt. Cook Village, offers spacious self-contained units that provide comfort and convenience. Each unit is surrounded by breathtaking alpine mountain views, making it the perfect retreat for nature lovers and adventurers alike.



Day 6



Aoraki Mt Cook National Park to Dunedin

Leave Aoraki Mt Cook National Park and travel past Twizel, one of the locations for the Lord of the Rings films. Go through Omarama, the gliding capital of New Zealand. Continue down the Waitaki Valley follow the hydro power generating system to the rural town of Kurow, home to the divine Valli Wines. Stop for a sip or continue on to the east coast. Stretch your legs in Oamaru, known for its white stone buildings constructed with the local Oamaru Stone and Steampunk influence. If you were a little late off the mark this morning you may get the chance to see the blue penguins come ashore at dusk. Continue south down the coast to Moeraki, and take a detour towards the beach to see the Moeraki Boulders, a unique geological feature well worth a look. As you arrive in Dunedin, take in the city's Edwardian and Scottish heritage reflected in the buildings around the city centre The Octagon.

SUGGESTED ACTIVITY - Monarch Wildlife Cruise from Wellers Rock

An unforgettable experience viewing rare and fascinating wildlife. Board the Monarch Boat and take in the fascinating sight of the Northern Royal Albatross as it comes into nest on the spectacular cliffs of Taiaroa, Otago Peninsula. You'll also see eight other species of birds including sooty shearwaters and petrels as well as sea lions and fur seals and if you're lucky dolphins and whales.

SUGGESTED ACTIVITY - Wildlife Peninsula Encounter Tour and Wildlife Cruise with Monarch

Join a small-group bus tour led by a local guide across the Otago Peninsula, featuring stunning harbour views, rural landscapes, and unique wildlife. Visit a remote beach to spot sea lions, take a Monarch Wildlife Cruise to see albatross, seals, and rare seabirds, and explore a Yellow-eyed Penguin conservation reserve with hidden viewing hides. This unforgettable journey blends breathtaking scenery with intimate wildlife encounters before a relaxed return to Dunedin.

Your accommodation: Motel on York

Motel on York is located in the heart of Dunedin city. The property offers superior accommodation only 300 metres away from cafes and restaurants.



Day 7



Dunedin to Te Anau (via Invercargill)

The drive to Te Anau takes you through classic Southland farming scenery. Head off-the-beaten-track today and follow the coastline instead of the inland route. Go through The Catlins area and be sure to take a detour to Kaka Point to view its majestic cliffs and pounding surf. If time permits, keep driving towards Nugget Point, iconic for its steep headland with a lighthouse perched atop. Continue through Invercargill to Riverton and Colac Bay, and then head north to Manapouri. From here you can embark on a day or overnight cruise to the remote Doubtful Sound, renowned for its natural beauty. Just a short way further will bring you to your lakeside destination of Te Anau, gateway to Fiordland National Park and Milford Sound.

Your accommodation: Lakefront Lodge

Stylish self-contained motel units less than a minute walk from Te Anau Lakefront. Enjoy a close walk to shops, cafes and restaurants.



Day 8



Te Anau to Milford Sound, returning to Te Anau

The magnificent Milford Road leading to Milford Sound offers some of the most beautiful and iconic scenery in the country. Countless photo opportunities mean this drive should not be rushed. From crystal clear lakes and towering mountains to lush glacier-formed meadows, this area is abundant with picture-perfect scenes. Continue on through the Homer Tunnel, an engineering marvel at 1219 meters long. Arriving in the village of Milford, you will be greeted with an amazing view of Mitre Peak. A day cruise into the heart of the sound is not to be missed. You'll learn about how this magnificent area was formed and experience the wonder of the falls that line the Fjord before back-tracking the way you came.

SUGGESTED ACTIVITY - Milford Sound Luxury Lunch Cruise with Fiordland Discovery

Embark on an unforgettable Milford Sound adventure aboard a boutique catamaran, the Fiordland Jewel. Designed for ultimate comfort and breathtaking views, our small group cruise offers cozy lounges, dining booths, and panoramic sea vistas from the main saloon or the outdoor dining area. Regardless of the weather, you'll be immersed in the stunning scenery and nature that surround you. Our knowledgeable crew will share fascinating stories and point out wildlife such as seals, penguins, and dolphins along the way. Enjoy a delicious lunch prepared by the onboard chef as you sail through the fiord. With ample outdoor space, you can fully experience the tranquility and beauty of Milford Sound.

Milford Sound Cruise with Real NZ - Lunch Included

Get up close and personal with Milford Sound on a leisurely cruise of this spectacular fiord. From thundering waterfalls to sky-high mountains to lush rainforests, Milford has it all. Experience the spray of a waterfall as you cruise close to sheer rock faces. Informative, participative, and relaxed, this is the perfect way to experience Milford Sound to the fullest. It is important you read and understand the risks associated with this activity. For more information, see here.

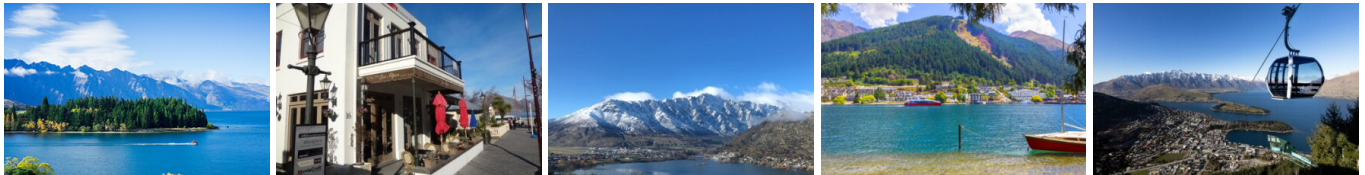
Your accommodation: Lakefront Lodge

Stylish self-contained motel units less than a minute walk from Te Anau Lakefront. Enjoy a close walk to shops, cafes and restaurants.

Meals included: Lunch



Day 9



Te Anau to Queenstown

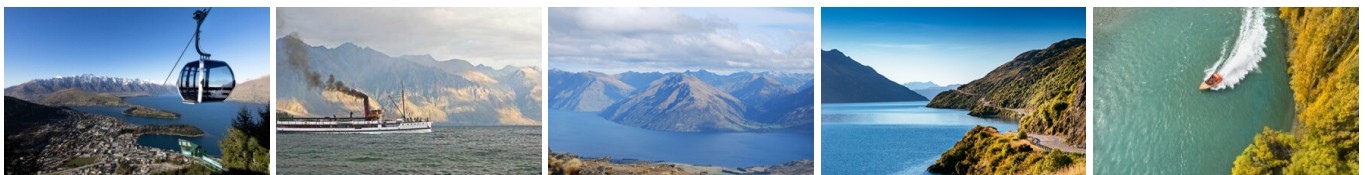
Journey across expansive tussock lands en route to Queenstown. Pass through Mossburn, renowned as the deer capital of New Zealand, and continue through the picturesque Southland countryside. As the road begins to trace the edge of Lake Wakatipu, marvel at the breathtaking views from the Devil's Staircase. Finally, approach Queenstown, the adventure capital of New Zealand, with the Remarkables mountain range standing majestically in the backdrop.

Your accommodation: Scenic Suites Queenstown

Scenic Suites Queenstown offers guests exquisite style and comfort, with a selection of rooms having spectacular views over Lake Wakatipu and the Southern Alps. The hotel prides itself on its 4-star hospitality that will make your stay in Queenstown even more memorable.



Day 10



Explore Queenstown

Well-known as New Zealand's 'adventure capital', Queenstown is home to a range of adventures, from the world's first and most famous bungy jumps to jet boat thrills, white-water rafting, and skydiving. However, Queenstown offers far more than a fast-paced, action-packed holiday. Settled on the shores of beautiful Lake Wakatipu beneath a soaring panorama of the Remarkables Mountain Range, this alpine town is surrounded by many historic, gastronomic, and scenic wonders. Take a stroll through the beautiful lakefront parks and gardens, browse through market stalls on weekends, dine in wonderful al-fresco restaurants, or ride on the 100-year-old historic Steamship - TSS Earnslaw to Walter Peak Station. Take the Queenstown Gondola up to Bob's Peak and soak up the panoramic views of the magnificent lake and mountain ranges. And after all of that, if you do want the adrenaline rush, Queenstown is known for taking your pick from the Shotover Jet, Canyon Swing, Zipline, Luge, or Heli-hike.

SUGGESTED ACTIVITY - Shotover Jet Canyon Jet Boat Ride

Shotover Jet is the only company permitted to operate in the Shotover River Canyons. It's a thrilling ride! Skim past rocky outcrops at close range in your Shotover Jet 'Big Red', as you twist and turn through the narrow canyons at breathtaking speeds. And a major highlight - hold tight for the world-famous Shotover Jet full 360-degree spins! It is important you read and understand the risks associated with this activity. For more information please see here.

SUGGESTED ACTIVITY - Gondola and 3 Luge Rides with Skyline Queenstown

In the heart of Queenstown, located 450 metres above town in the Ben Lomond Scenic Reserve is the Skyline Complex. A gondola ride to the summit makes for awe-inspiring views of the city surround. Arrive at the complex and wander the outside viewing decks for a picture perfect outlook. Then onto the Luge! The 800 metre luge track offers an exhilarating journey through banked corners, tunnels and dippers.

SUGGESTED ACTIVITY - TSS Earnslaw Cruise and Walter Peak Gourmet BBQ Dinner

Enjoy a quintessential Kiwi experience, a delicious gourmet BBQ buffet meal, and a farm demonstration in a stunning lakeside setting. Take in the stunning views of Lake Wakatipu and its surroundings as you cruise across the lake to the historic Walter Peak high country farm aboard the TSS Earnslaw Steamship. Enjoy the ambiance of the heart of the stately homestead while your Colonel's Homestead Restaurant chef prepares a gourmet BBQ dinner. Your seasonal menu includes an extensive selection of local New Zealand produce, including succulent meats and a selection of delicious vegetables and salads. Complete your meal with your choice of delicious desserts, or New Zealand cheeses. After dinner, watch the farm dogs in action with a sheep-herding demonstration and say hello to the other farm animals. Finally, cruise home under the southern stars and enjoy the fresh night air as the lights of Queenstown draw ever closer.

Your accommodation: Scenic Suites Queenstown

Scenic Suites Queenstown offers guests exquisite style and comfort, with a selection of rooms having spectacular views over Lake Wakatipu and the Southern Alps. The hotel prides itself on its 4-star hospitality that will make your stay in Queenstown even more memorable.



Day 11



Return your vehicle to Queenstown Airport

Explore more of Queenstown before dropping your rental car at the airport depot and continuing your onward journey.

Farewell from Aotearoa / New Zealand

Bid farewell to Aotearoa / New Zealand, taking with you unforgettable memories of its breathtaking landscapes and incredible adventures. In Māori, it is said mā te wā, which is not goodbye, it is see you soon!

Tour details

Departures: Daily
Tour type: Nationwide Self Drive
Starts: Wellington
Finishes: Queenstown
Tour length: 11
Accommodation: Motels
Car/transport type:

Accommodation summary

Day 1	Adina CityLife Wellington
Day 2	Adina CityLife Wellington
Day 3	Harbour View Motel
Day 4	Quality Suites Amore
Day 5	Mt Cook Motel
Day 6	Motel on York
Day 7	Lakefront Lodge
Day 8	Lakefront Lodge
Day 9	Scenic Suites Queenstown
Day 10	Scenic Suites Queenstown