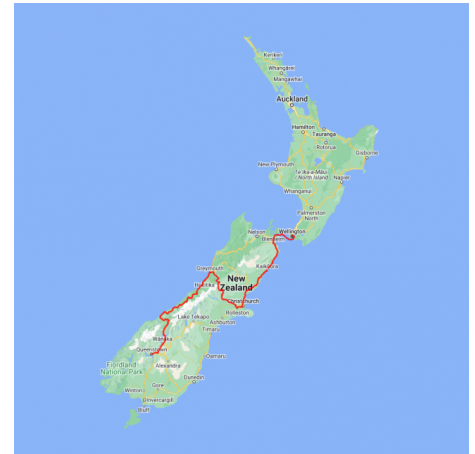


## 9 Day Queenstown to Wellington Adventure

This 9 day tour starts in the 'Adventure Capital' of Queenstown for an unforgettable holiday touring the South Island highlights and finishing in the 'Coolest Little Capital' Wellington City. Along the way you'll explore spectacular wilderness and enjoy wonderful activities which will immerse you in the scenery and culture of New Zealand.

Starts in: Queenstown  
 Finishes in: Wellington  
 Length: 9days / 8nights  
 Accommodation: Motels  
 Can be customised: Yes

This itinerary can be customised to suit you perfectly. We can add more days, remove days, change accommodations, mix it up, add activities to suit your interests or simply design and create something from scratch. Call us today to get your custom New Zealand itinerary underway.



### Inclusions:

Includes: Late model rental cars

Includes: Unlimited kms

Includes: Airport & ferry terminal rental car fees

Includes: Comprehensive tour pack (detailed itinerary, driving instructions, map/guidebooks, brochures)

Included activity: Private Transfer Queenstown Airport to your Accommodation

Included activity: Milford Sound Fly, Cruise, Fly with Milford Sound Scenic Flights

Included activity: TranzAlpine Scenic Train: Greymouth to Christchurch

Included activity: Interislander Ferry Picton to Wellington

Included activity: Private transfer Wellington Hotel to Airport (IST)

Includes: Fully inclusive rental car insurance (excess may apply)

Includes: GPS navigation

Includes: Additional drivers

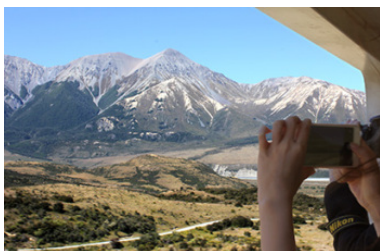
Includes: 24/7 support while touring New Zealand

Included activity: Electronic Travel Guide and In-Country Support App

Included activity: Franz Josef Nature Tour with Glacier Valley Eco Tours

Included activity: Shared Transfer from the TranzAlpine Railway Station to a City Hotel with Christchurch Touring Company

Included activity: Private transfer Wellington ferry terminal to hotel (IST)



## Day 1



### Private Transfer Queenstown Airport to your Accommodation

On arrival you will be met by a private driver and delivered to your Queenstown accommodation.

---

### Welcome to Queenstown

Renowned for its adrenaline inducing activities Queenstown is synonymous with adventure. Parked on the shores of Lake Wakatipu this small alpine town is nestled below soaring vistas of The Remarkables Mountain Range. While arguably the brightest gem in New Zealand's crown, Queenstown offers far more than an action-packed getaway. Spend time on the Gibbston wine trail and end with a meal at Michelin star chef Josh Emmet's restaurant, Rata. Take a trip down memory lane on a 100 year old steamship the TSS Earnslaw. Soak in the scenery on your walk around the lake, or venture further afield into Fiordland National Park. Head over the hill to resort town Wanaka, or re-live scenes from Lord Of The Rings by four wheel drive. But - if you really do want that rush - head out on the Shotover Jet, dive off the Nevis Bungy, freefall on the Canyon swing or Zip line the Gondola. Just be sure it's done on an empty stomach & don't say we didn't warn you!

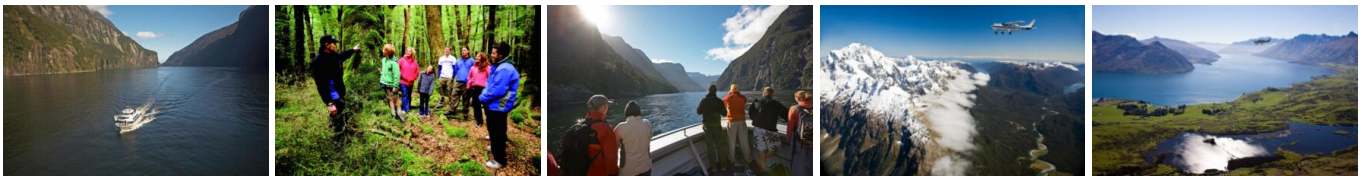
---

### Your accommodation: Scenic Suites Queenstown

Scenic Suites Queenstown offers guests exquisite style, comfort and spectacular views over Lake Wakatipu and the Southern Alps. The hotel prides itself on its 4-star hospitality that will make your stay in Queenstown even more memorable.



## Day 2



### Milford Sound Fly, Cruise, Fly with Milford Sound Scenic Flights

Fly above the rugged backcountry of Central Otago. Witness what the power of nature has created over the years, as you journey over Mt Aspiring National Park and the world heritage listed Fiordland National Park. Then, take to the water on a cruise through the iconic Milford Sound before flying back over even more stunning landscapes.

---

### Your accommodation: Scenic Suites Queenstown

Scenic Suites Queenstown offers guests exquisite style, comfort and spectacular views over Lake Wakatipu and the Southern Alps. The hotel prides itself on its 4-star hospitality that will make your stay in Queenstown even more memorable.



## Day 3



### Collect Rental Car

Choose a car to best suit your needs from our fantastic rental car range. From compact economy, hatchbacks to prestige SUVs.

---



## Explore Queenstown

Well-known as New Zealand's 'adventure capital', Queenstown is home to a range of adventures, from the world's first and most famous bungee jumps to jet boat thrills, white-water rafting, and skydiving. However, Queenstown offers far more than a fast-paced, action-packed holiday. Settled on the shores of beautiful Lake Wakatipu beneath a soaring panorama of the Remarkables Mountain Range, this alpine town is surrounded by many historic, gastronomic, and scenic wonders. Take a stroll through the beautiful lakefront parks and gardens, browse through market stalls on weekends, dine in wonderful al-fresco restaurants, or ride on the 100-year-old historic Steamship - TSS Earnslaw to Walter Peak Station. Take the Queenstown Gondola up to Bob's Peak and soak up the panoramic views of the magnificent lake and mountain ranges. Steamer Wharf is full of delicious eateries and the O'Connells Pavillion is great for a spot of shopping. And after all of that, if you do want the adrenaline rush, Queenstown is known for taking your pick from the Shotover Jet, Canyon Swing, Zipline, Luge, or Heli-hike.

### Your accommodation: Scenic Suites Queenstown

Scenic Suites Queenstown offers guests exquisite style, comfort and spectacular views over Lake Wakatipu and the Southern Alps. The hotel prides itself on its 4-star hospitality that will make your stay in Queenstown even more memorable.



## Day 4



### Queenstown to Franz Josef Glacier via Wanaka

From Queenstown you'll cross the Crown Range, the highest sealed road in New Zealand to arrive in the Alpine town of Wanaka, gateway to Mt Aspiring National Park. Skirting the shores of both Lake Wanaka and Hawea, you will enter the small town of Makarora. Stop at Blue Pools for a 1-hour return walk through the native beech forest to a glacier-fed swimming hole. Continue on through the remote seaside settlement of Haast before heading up the wild West Coast highway you pass through ancient temperate rainforests while getting sneak peeks of the wild coast beaches occasionally. Paringa Salmon Farm is worth a stop to stretch your legs, feed the fish, and stop for lunch and refreshments. Keep heading North and be sure to enjoy the view of the ever-changing towering snowcapped Southern Alps Mountain Range. Fox Glacier welcomes you first, then comes your destination for the night Franz Josef township.

### Your accommodation: Aspen Court Franz Josef

Aspen Court Franz Josef is set amongst native bush providing a very peaceful ambience. Internally the motel units are large, practical and modern with all containing quality furnishings and fittings.



## Day 5



### Franz Josef Nature Tour with Glacier Valley Eco Tours

Nestled in thick historic West Coast forest and a stone's throw from wild black sand beaches, this is one of the world's most unusual glaciers. Beautiful blue skies or magical misty rain, whatever the weather - you will feel like you are in Narnia or LOTR.

With easy walking at your pace, information on glaciology, geology, geomorphology, flora and fauna, local legends, history, and small guided groups with fantastic guides, you will experience this glacier in style and in the best hands with the only local company. Wander past glacier rivers and streams and through beautiful podocarp forest; discover hidden natural treasures such as native snails, wild native mushrooms, and dozens of species of native orchids; listen to native bird song and waterfalls; see if you can spot a Chamois or a Tahr on the huge snow-capped mountains above while drinking a cup of tea and talking one-on-one with your guide. This tour will be a highlight of your travels in New Zealand.

## SUGGESTED ACTIVITY - Twin Glacier Scenic Helicopter Flight with The Helicopter Line

A spectacular scenic flight soaring over two of New Zealand's most famous glaciers, Fox and Franz Josef. Landing at the head of one and view the incredible sight of this frozen river as it winds its way through ancient carved valleys.

---

### Your accommodation: Aspen Court Franz Josef

Aspen Court Franz Josef is set amongst native bush providing a very peaceful ambience. Internally the motel units are large, practical and modern with all containing quality furnishings and fittings.



## Day 6



### Franz Josef to Greymouth Train Station

Today head north along the mighty West Coast highway you pass through ancient temperate rainforests while getting sneak peeks of the wild coast beach occasionally. Whataroa is the next town where you can see one of the world's rarest birds, the New Zealand white heron or Kotuku nest at the Waitangi Roto Nature Reserve, and guided tours from October to March will take you there.

Ross is the site of an old gold mining town and some of the old buildings and workings remain. In fact, Ross is still home to one of the few working gold mines left in New Zealand and the local information center offers you the chance to pan for gold.

Hokitika is a great place to explore craft and gift stores and head to the coast and take in the endless sea views. The Jade or Greenstone on offer in Hokitika is probably some of the best you will see in the country. The Hokitika Gorge is located 45 minutes inland and offers turquoise waters flowing through a narrow gorge. A great short walk will deliver you to this piece of paradise.

Continue on to Greymouth, the largest town on the West Coast and the starting point for the next leg of your journey the TranzAlpine Scenic Train. Drop your rental car at the Greymouth Train Station depot located at the train station building before boarding your train to Christchurch.

---

### TranzAlpine Scenic Train: Greymouth to Christchurch

Considered one of the world's great train journeys, the TranzAlpine Scenic Train takes you from Greymouth to Christchurch. Travel across the South Island from the west to the east coast through Arthur's Pass National Park. From the comfort of your carriage see lush beech forest, deep river valleys and the spectacular peaks of the Southern Alps. Descend to the windswept Canterbury Plains before arriving in the city of Christchurch.

---

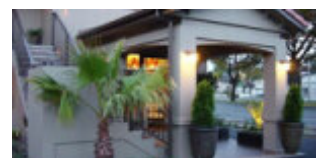
### Shared Transfer from the TranzAlpine Railway Station to a City Hotel with Christchurch Touring Company

On arrival at the Christchurch railway station, you will be met by a driver and transferred to your Christchurch accommodation.

---

### Your accommodation: Terra Vive Luxury Suites and Apartments

Terra Vive Luxury Suites and Apartments offer luxury accommodation in the heart of Christchurch City. Situated within the beautiful tree-lined street of Bealey Avenue, Terra Vive is ideally located in close proximity to the shops, restaurants and cafes.



## Day 7



### Collect Rental Car

Choose a car to best suit your needs from our fantastic rental car range. From compact economy, hatchbacks to prestige SUVs.

---

## Christchurch to Kaikoura

The drive north from Christchurch to Kaikoura takes you through the rolling hills of North Canterbury's major wine region, the Waipara Valley. Allow time for a detour and visit Hanmer Springs for a dip in the mineral hot pools. Continue on and cross the Hawkswood Range before descending to the spectacular Kaikoura coastline - where the road hugs the ocean for the last leg of the drive.

---

### SUGGESTED ACTIVITY - Ocean's Cabin with Whale Watch Kaikoura

Experience New Zealand's only marine based whale watching company. Whale Watch Kaikoura offer a once-in-a-lifetime, up close encounter with the giant Sperm Whale. You are also likely to encounter New Zealand fur seals, dusky dolphins and albatross. Depending on the season you may also see pilot, blue and southern right whales as well as migrating humpbacks. Often orcas can be spotted here and the world's smallest dolphin, the Hector's, occasionally make an appearance.

Cruise in style on modern catamarans, specifically designed for whale watching, featuring large passenger cabins and outside viewing decks. Passenger numbers for each tour are kept below the vessel carrying capacity to ensure your tour experience remains a personal one.

---

### Your accommodation: The White Morph, Kaikoura

Set on the Esplanade in Kaikōura, The White Morph enjoys commanding views of the ocean and mountains. Just a 10-minute walk into town, The White Morph has been beautifully placed so that you can take in the spectacular scenery of Kaikoura while enjoying the variety of attractions on offer.



---

## Day 8



### Kaikoura to Picton

Today follow the coast to Picton, located at the top of the South Island. As you leave Kaikoura you'll take in the spectacular shoreline and keep a lookout for native wildlife as you go. Stop to view adult fur seals at Ohau Point, and take a short stroll along the oceanside walkway. Continuing on, you'll have the ocean on one side and the Kaikoura ranges on the other before traversing the dry hills of Marlborough, New Zealand's largest wine-producing region. Visit one of the vineyards surrounding Blenheim for a wine tasting or a gourmet lunch before beginning the final leg of your journey to Picton.

---

### Interislander Ferry Picton to Wellington

The 92 km journey between Picton and Wellington takes around 3 hours and has been described as 'one of the most beautiful ferry rides in the world'. Around one hour of the cruise takes you through the Marlborough Sounds. This region of bush covered mountains, small islands, crystal clear waters and secluded bays offer remarkable photographic opportunities.

From the Cook Strait, spectacular views of the Kaikoura Ranges on the South Island can be enjoyed and often dolphins and sea birds are seen. After crossing the strait you approach Wellington Harbour and pass many interesting points such as Pencarrow Head on top of which is New Zealand's oldest lighthouse (1859). Red Rocks is home to a seal colony and Oterangi Bay is the site which recorded the country's highest ever wind speed of 268 kph (167 mph).

---

### Private transfer Wellington ferry terminal to hotel

You will be met on arrival into Wellington and transferred to your hotel.

---

### Your accommodation: Adina CityLife Wellington

Adina CityLife Wellington is a suite style hotel with every amenity required for a comfortable stay, as well as being in a superb location to explore the compact city centre. Situated on Lambton Quay, you'll find the best shopping, tourist attractions and cultural landmarks all within easy walking distance.





## Day 9



### Private transfer Wellington Hotel to Airport (IST)

You will be collected from your Wellington hotel and transferred to the airport.

---

## Tour details

Departures:	Daily
Tour type:	Nationwide Self Drive
Starts:	Queenstown
Finishes:	Wellington
Tour length:	9
Accommodation:	Motels
Car/transport type:	

---

## Included activities

Includes	Private airport transfers
Includes	Private train station transfers
Includes	Interislander ferry crossing
Includes	TranzAlpine Train from Greymouth to Christchurch
Includes	Milford Sound Fly-Cruise-Fly and Dart River combo
Includes	Half Day Franz Josef Eco Tour

---

## Accommodation summary

Day 1	Scenic Suites Queenstown
Day 2	Scenic Suites Queenstown
Day 3	Scenic Suites Queenstown
Day 4	Aspen Court Franz Josef
Day 5	Aspen Court Franz Josef
Day 6	Terra Vive Luxury Suites and Apartments
Day 7	The White Morph, Kaikoura
Day 8	Adina CityLife Wellington