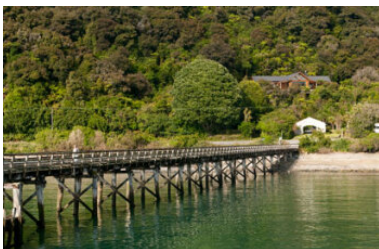


TranzAlpine, Glaciers & Queenstown Discovery

Experience a scenic journey departing from Christchurch across the Southern Alps aboard the TranzAlpine Scenic Train, headed through to the rugged West Coast to Franz Josef. Explore the stunning Westland Tai Poutini National Park and glaciers, then continue south through the breathtaking Haast Pass to Queenstown, in the Southern Lakes region and New Zealand's adventure hub.



Starts in: Christchurch
 Finishes in: Queenstown
 Length: 3days / 2nights
 Accommodation: Hotel 4 star
 Can be customised: Yes

This itinerary can be customised to suit you perfectly. We can add more days, remove days, change accommodations, mix it up, add activities to suit your interests or simply design and create something from scratch. Call us today to get your custom New Zealand itinerary underway.



Inclusions:

- Includes: All coach transport
- Includes: All pick ups/drop offs at destinations
- Includes: Afterhours emergency support while touring
- Included activity: TranzAlpine Scenic Train: Christchurch to Greymouth
- Included activity: Greymouth Train Station to Franz Josef with Hokitika Scenic Tours
- Included activity: The Visitor Promise - Cultural Learning Course
- Included activity: Franz Josef to Queenstown with Glacier Shuttles
- Meals included: 2 breakfasts

Day 1



TranzAlpine Scenic Train: Christchurch to Greymouth

The early morning departure is rewarded with incredible scenery today onboard the TranzAlpine Scenic Train. Considered one of the world's great train journeys, it travels between the East Coast, Christchurch and the West Coast, Greymouth. From your carriage, you'll see the fields of the Canterbury Plains and farmland, followed by the spectacular gorges and river valleys of the Waimakariri River. The train then climbs into the Southern Alps passing through small settlements and Arthur's Pass National Park before descending through the lush beech rain forest to the West Coast town of Greymouth, a great base for visits to Punakaiki and the West Coast glaciers.

Greymouth Train Station to Franz Josef with Hokitika Scenic Tours

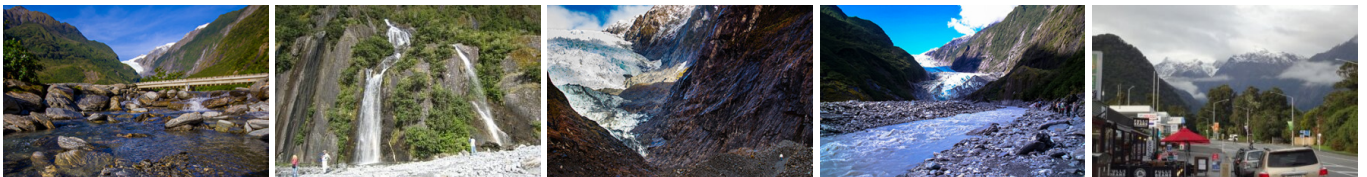
Depart Greymouth, and head south through Hokitika and towards Glacier Country. Pass through Ross, a historic gold mining town where several old buildings remain intact. Travelling further down the coast drive through Hari Hari, the town where Guy Menzies, the first person to fly solo over the Tasman crash-landed. Follow the coast through several small towns including Whataroa, the only home to the Kōtuku-White Heron which is showcased on the New Zealand \$2 coin. From there it is a short drive and on a clear day you may even catch a glimpse of the Franz Josef glacier as you arrive in the town centre.

Your accommodation: Scenic Hotel Franz Josef Glacier

Only a breath away from the Franz Josef Glacier, Scenic Hotel is located in the heart of Franz Josef Village. Here you will find all of the amenities you would expect, as well as being close to the shops, restaurants and activities on offer in the beautiful Westland region.



Day 2



Explore Franz Josef

Franz Josef is a small yet lively town in the heart of New Zealand's West Coast, best known for its spectacular 12 km-long glacier. The township is surrounded by lush, rainforest-clad mountains and has a vibrant atmosphere with plenty to explore. A variety of scenic walking trails offer incredible views of the glacier, but for a truly up-close experience, a licensed helicopter tour is the only way to set foot on the ice. Beyond the glacier, unwind in the rejuvenating Hot Pools or visit the West Coast Wildlife Centre to spot rare kiwi birds. If you're in the mood for a more relaxed day, the township is home to charming souvenir and gift shops, as well as great dining spots like SnakeBite Brewery and King Tiger. Whether you're chasing adventure or relaxation, Franz Josef is a stunning blend of wild beauty and welcoming hospitality.

SUGGESTED ACTIVITY - Franz Josef Glacier Helihike with Franz Josef Glacier Guides

After a thrilling scenic flight, high above the rugged terrain, you will land on the glacier, ready to undertake a guided glacier hike. Your friendly guide will lead you through some of the most pristine and awe-inspiring glacial scenery in the world. Your guide will choose your route carefully as you go and, with an eye for the most spectacular ice formations, you'll soon be making your way through an extraordinary landscape of towering peaks and glistening blue ice. It is important you read and understand the risks associated with this activity prior to travel. For more information please see here.

SUGGESTED ACTIVITY - Franz Josef Nature Tour with Glacier Valley Eco Tours

Unveil the hidden wonders of the Franz Josef Glacier Valley on this immersive, eco-conscious walking journey. Perfect for nature enthusiasts of all ages, this tour leads you through ancient podocarp rainforests and along pristine glacial rivers to witness the raw power of the ice from spectacular viewpoints. With a small group guarantee and expert local guides, you'll discover secret waterfalls, learn the fascinating stories of West Coast glaciology, and enjoy a relaxing break with hot drinks and cookies amidst the Southern Alps.

Your accommodation: Scenic Hotel Franz Josef Glacier

Only a breath away from the Franz Josef Glacier, Scenic Hotel is located in the heart of Franz Josef Village. Here you will find all of the amenities you would expect, as well as being close to the shops, restaurants and activities on offer in the beautiful Westland region.

Meals included: Breakfast



Day 3



Franz Josef to Queenstown with Glacier Shuttles

Set off from the small village of Franz Josef, set at the edge of Franz Josef Glacier (one of the world's most accessible glaciers), and travel through the remote and unspoiled scenery of the West Coast. Take the scenic Haast Pass through the Southern Alps, the southernmost pass between the East and West coasts of the South Island. See the clear and pristine waters of Lake Hawea as you travel east, passing Lake Hawea and Lake Wānaka as you continue through to New Zealand's 'Adventure Capital', Queenstown.

Tour details

Departures: Daily
Tour type: Independant Bus & Coach
Starts: Christchurch
Finishes: Queenstown
Tour length: 3
Accommodation: Hotel 4 star
Car/transport type:

Accommodation summary

Day 1 Scenic Hotel Franz Josef Glacier
Day 2 Scenic Hotel Franz Josef Glacier