

9 Day Natural South Island

This South Island loop takes you along the coast between the South's two largest cities, Christchurch and Dunedin. In Dunedin you have time to explore the unique wildlife of the Otago Peninsula, before continuing south to Te Anau for a glowworm cave adventure. This 9 day tour wouldn't be complete without 2 nights in the 'Adventure Capital' of Queenstown before you follow the Southern Alps north to Mt Cook National Park and back to Christchurch.

Starts in: Christchurch
Finishes in: Christchurch
Length: 9days / 8nights
Accommodation: Motels
Can be customised: Yes

This itinerary can be customised to suit you perfectly. We can add more days, remove days, change accommodations, mix it up, add activities to suit your interests or simply design and create something from scratch. Call us today to get your custom New Zealand itinerary underway.



Inclusions:

Includes: Late model rental cars
Includes: Fully inclusive rental car insurance (excess may apply)
Includes: Unlimited kms
Includes: Afterhours emergency support while touring
Included activity: Private Transfer Christchurch International Airport to Christchurch Accommodation
Included activity: Electronic Travel Guide and In-Country Support App
Included activity: The Visitor Promise - Cultural Learning Course
Included activity: Wildlife Peninsula Encounter Tour and Wildlife Cruise with Monarch
Included activity: Te Anau Glowworm Caves with RealNZ
Included activity: Wilderness Jet Experience with Dart River Safaris
Included activity: Glacier Explorers
Included activity: Christchurch Gondola

Day 1



Private Transfer Christchurch International Airport to Christchurch Accommodation

On arrival, you will be met by a private driver and transferred to your Christchurch accommodation.

Welcome to Christchurch City

Christchurch New Zealand's garden city is steadily being transformed into a vibrant urban destination. Encompassing a large green belt, it is known for its wide tree lined avenues and lush gardens. A great way to explore the city or easy way to see the sights or ride the historic trams across town to the renowned botanic gardens and the unique cardboard Transitional Cathedral, that's right it is built of cardboard!

Your accommodation: Quest on Cambridge

Quest on Cambridge serviced apartment-style hotel rooms offer guests a relaxed and comfortable Christchurch accommodation experience. Each room has an open-plan living area, a fully equipped kitchen, and natural light. Quest on Cambridge is a short walk from the south shopping centre and to the Botanic Gardens.



Day 2



Collect Rental Car

This tour's from price includes an intermediate-sized vehicle, setting you up for comfortable travels. Yet, we understand every adventure is unique! Feel free to select the perfect wheels from our incredible collection of rental cars, spanning from economy hatchbacks to premium SUVs.

Christchurch to Dunedin

Crossing the vast Canterbury Plains you'll head South on State Highway one, traversing many braided rivers that start their life as glacial melt water high in the Southern Alps. Go over New Zealand's longest bridge at Rakaia and onwards through Timaru.

Stretch your legs in Oamaru, known for its white stone buildings constructed with the local Oamaru Stone. If you were a little late off the mark this morning you may get the chance to see the local blue penguins come ashore at dusk. Continue down the coast to Moeraki, and take a detour towards the beach to see the Moeraki Boulders, a unique geological feature and well worth the look.

As you arrive in Dunedin, take in the city's Edwardian and Scottish heritage reflected in the buildings around the city centre The Octagon.

Your accommodation: Motel on York

Motel on York is located in the heart of Dunedin city. The property offers superior accommodation only 300 metres away from cafes and restaurants.



Day 3



Explore Dunedin and the Otago Peninsula

Known as the Edinburgh of the South, Dunedin City has a heavy Scottish influence. Surrounded by rugged coastal plains and windswept beaches it's home to an eclectic mix of historical and modern architecture as well as industrial technology. Renowned for its Flemish Baroque-inspired 'gingerbread house' Railway Station, this university town is bustling with life. Head to the Saturday farmers market held in the aforementioned railway grounds for a taste of organic produce, handmade crepes and local honey. Explore the many cafes and wine bars in The Octagon, then continue on a self-guided walking tour of the internationally acclaimed Street Art dotted around the city. Drive to the coast and watch the freighters passing in the distance while you sunbathe, or hire a mountain bike and test your legs on one of the many trails available in the area. For a more immersive historical experience, follow the coast to New Zealand's only castle, Larnach Castle. On your way back be sure to head to the Otago Peninsula to see the largest mainland Albatross colony in the world.

Wildlife Peninsula Encounter Tour and Wildlife Cruise with Monarch

Join a small-group bus tour led by a local guide across the Otago Peninsula, featuring stunning harbour views, rural landscapes, and unique wildlife. Visit a remote beach to spot sea lions, take a Monarch Wildlife Cruise to see albatross, seals, and rare seabirds, and explore a Yellow-eyed Penguin conservation reserve with hidden viewing hides. This unforgettable journey blends breathtaking scenery with intimate wildlife encounters before a relaxed return to Dunedin.

Your accommodation: Motel on York

Motel on York is located in the heart of Dunedin city. The property offers superior accommodation only 300 metres away from cafes and restaurants.



Day 4



Dunedin to Te Anau (via Invercargill)

The drive to Te Anau takes you through classic Southland farming scenery. Head off-the-beaten-track today and follow the coastline instead of the inland route. Go through The Catlins area and be sure to take a detour to Kaka Point to view its majestic cliffs and pounding surf. If time permits, keep driving towards Nugget Point, iconic for its steep headland with a lighthouse perched atop. Continue through Invercargill to Riverton and Colac Bay, and then head north to Manapouri. From here you can embark on a day or overnight cruise to the remote Doubtful Sound, renowned for its natural beauty. Just a short way further will bring you to your lakeside destination of Te Anau, gateway to Fiordland National Park and Milford Sound.

Te Anau Glowworm Caves with RealNZ

Begin your Te Anau Glowworm experience with a scenic cruise across Lake Te Anau on board the luxury catamaran, Luminosa, to the western side of the lake. On arrival, you'll enter the caves through Cavern House, where informative displays detail the history of this 12,000 year old underground network. You'll then explore by limestone pathway while your guide points out hidden whirlpools, sculpted rock formations, and a rushing underground waterfall. See a magical display of thousands of glowworms as you glide through the darkness in a small boat.

Your accommodation: Lakefront Lodge

Stylish self-contained motel units less than a minute walk from Te Anau Lakefront. Enjoy a close walk to shops, cafes and restaurants.



Day 5



Te Anau to Queenstown

Journey across expansive tussock lands en route to Queenstown. Pass through Mossburn, renowned as the deer capital of New Zealand, and continue through the picturesque Southland countryside. As the road begins to trace the edge of Lake Wakatipu, marvel at the breathtaking views from the Devil's Staircase. Finally, approach Queenstown, the adventure capital of New Zealand, with the Remarkables mountain range standing majestically in the backdrop.

SUGGESTED ACTIVITY - Queenstown Skyline Gondola Ride

Hop aboard the Skyline Gondola - the steepest cable car lift in the Southern Hemisphere! From which you can take in the awe-inspiring views of this spectacular landscape. Sit back and relax as you enjoy panoramic views of The Remarkables, Walter Peak, Cecil Peak, Coronet Peak and the magnificent Lake Wakatipu.

SUGGESTED ACTIVITY - Shotover Jet Canyon Jet Boat Ride

Shotover Jet is the only company permitted to operate in the Shotover River Canyons. It's a thrilling ride! Skim past rocky outcrops at close range in your Shotover Jet 'Big Red', as you twist and turn through the narrow canyons at breathtaking speeds. And a major highlight - hold tight for the world-famous Shotover Jet full 360-degree spins! It is important you read and understand the risks associated with this activity. For more information please see [here](#).

Your accommodation: Scenic Suites Queenstown

Scenic Suites Queenstown offers guests exquisite style and comfort, with a selection of rooms having spectacular views over Lake Wakatipu and the Southern Alps. The hotel prides itself on its 4-star hospitality that will make your stay in Queenstown even more memorable.



Day 6



Wilderness Jet Experience with Dart River Safaris

Journey deep into the heart of the world-renowned Mt Aspiring National Park, where myth, heritage, and fantasy come to life. As one of Queenstown's most exhilarating activities, the Wilderness Jet adventures on a spectacular journey deep into the heart of the world-renowned Mount Aspiring National Park. It is important you read and understand the risks associated with this activity. For more information please see [here](#).

Your accommodation: Scenic Suites Queenstown

Scenic Suites Queenstown offers guests exquisite style and comfort, with a selection of rooms having spectacular views over Lake Wakatipu and the Southern Alps. The hotel prides itself on its 4-star hospitality that will make your stay in Queenstown even more memorable.



Day 7



Queenstown to Aoraki-Mt Cook National Park

Depart Queenstown and head through the Kawarau Gorge and over the historic Kawarau Bridge, a popular bungee jumping location. Choose to participate in this daredevil sport or watch others instead. Continue through Gibbston home to some of the best wines in the country. Follow the gorge to arrive in Cromwell, known for its many fruit orchards. Cromwell was completely submerged when the Clyde Dam was built and Lake Dunstan was established in 1992, the remnants of the old Cromwell town provide a unique snapshot into the history of this area. Head over through the Lindis Pass, one of New Zealand's highest roads, with the summit reaching 971 metres. Its tussock-covered hills are a barren but beautiful sight as you descend into the Mackenzie Basin. You'll go through the towns of Omarama and Twizel, the last stops before you arrive at Lake Pukaki and take the Aoraki-Mt Cook Highway to arrive in the small village

Glacier Explorers

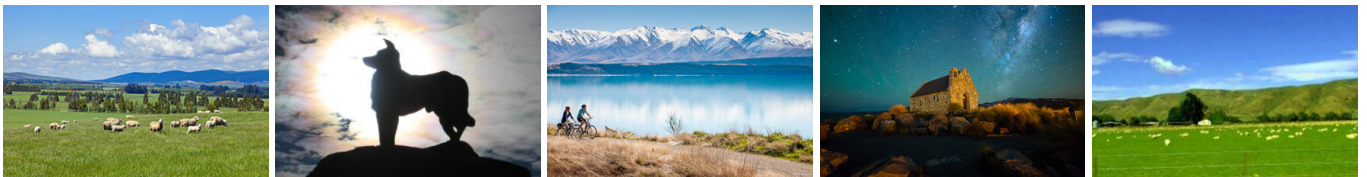
Experience 500-year-old icebergs up close on the Aoraki-Mt Cook terminal lake. The Glacier Explorers tour is the only one of its kind in New Zealand and one of only three in the world! Very few glaciers terminate into lakes and even fewer of them are accessible. See towering ice cliffs and floating icebergs from the safety of a specially designed boat. These boats provide a safe way to view unseen and inaccessible areas of New Zealand's largest glacier The Tasman.

Your accommodation: Mt Cook Motel

Mt Cook Motel, nestled in the heart of Mt. Cook Village, offers spacious self-contained units that provide comfort and convenience. Each unit is surrounded by breathtaking alpine mountain views, making it the perfect retreat for nature lovers and adventurers alike.



Day 8



Aoraki-Mt Cook National Park to Christchurch

Leaving Aoraki Mt Cook National Park, travel a short distance for a stop at the visitor centre on the southern shores of Lake Pukaki. Learn about the formation of the region and take in the spectacular views of Aoraki-Mount Cook. Along the way you'll come to Lake Tekapo which also displays the same reflective qualities as Lake Pukaki, making the waters bright turquoise. It's a great place to take a scenic flight, soak in a hot spring or just marvel at the magnificent views. From here you travel through Burkes Pass and into the rich farming valley that surrounds Geraldine. Continue across the vast Canterbury Plains to Christchurch.

Christchurch Gondola

In the Heathcote Valley, just a 20-minute drive from the heart of Christchurch City, ride the Christchurch Gondola for nearly a kilometer to the collapsed rim of an extinct volcano, which exploded six million years ago. Take in the spectacular panoramic views of the central city, Lyttelton Harbour, Banks Peninsula, Canterbury Plains, and the distant peaks of the Southern Alps. Wander the summit complex, enjoy a coffee or lunch in the cafe, and choose one of many nature walks to explore or visit the Christchurch Discovery Ridge, a dramatic reconstruction of the history of the Port Hills and Christchurch.

Your accommodation: Quest on Cambridge

Quest on Cambridge serviced apartment-style hotel rooms offer guests a relaxed and comfortable Christchurch accommodation experience. Each room has an open-plan living area, a fully equipped kitchen, and natural light. Quest on Cambridge is a short walk from the south shopping centre and to the Botanic Gardens.



Day 9



Return Your Vehicle to Christchurch Airport

It's time to return your rental car and let the South Island journey come to an end. If time allows spend the day exploring more of Christchurch, we'd suggest a leisurely drive up the Port Hills for some great sites and then over to the harbour of Lyttleton, before circling through the tunnel and back to the airport to continue your journey home.

Farewell from Aotearoa-New Zealand

Bid farewell to Aotearoa-New Zealand, taking with you unforgettable memories of its breathtaking landscapes and incredible adventures. In Maori, it is said mā te wā, which is not goodbye, it is see you soon!

Tour details

Departures:	Daily
Tour type:	South Island Self Drive
Starts:	Christchurch
Finishes:	Christchurch
Tour length:	9
Accommodation:	Motels
Car/transport type:	

Included activities

Includes	Private airport transfers
Includes	Christchurch Gondola Ride
Includes	Glacier Explorers Tour, Mt Cook National Park
Includes	Wildlife cruise and Yellow eyed penguin colony, Dunedin
Includes	Dart River Wilderness Safari, Glenorchy
Includes	Te Anau Glow Worm Caves

Accommodation summary

Day 1	Quest on Cambridge
Day 2	Motel on York
Day 3	Motel on York
Day 4	Lakefront Lodge
Day 5	Scenic Suites Queenstown
Day 6	Scenic Suites Queenstown
Day 7	Mt Cook Motel
Day 8	Quest on Cambridge