

National Parks and Glacial Peaks

Embark on a bespoke New Zealand adventure through stunning National Parks. Begin in Auckland, exploring Waitomo's Glowworm Caves and sailing across Lake Taupo. Experience volcanic beauty in Tongariro National Park, then enjoy wildlife encounters in Zealandia, Wellington. Take one of the most scenic ferry rides in the world then explore the Abel Tasman, followed by a heli-hike at Franz Josef Glacier. Discover Mount Aspiring on a jet boat, and enjoy an overnight voyage on Doubtful Sound. Indulge in fine dining at Larnach Castle and wake up to the grandeur of Aoraki in Mount Cook National Park.

Starts in: Auckland
 Finishes in: Christchurch
 Length: 20days / 19nights
 Accommodation: Boutique Lodges & Hotels
 Can be customised: Yes

This itinerary can be customised to suit you perfectly. We can add more days, remove days, change accommodations, mix it up, add activities to suit your interests or simply design and create something from scratch. Call us today to get your custom New Zealand itinerary underway.



Inclusions:

Includes: Late model rental cars

Includes: Unlimited kms

Included activity: The Visitor Promise - Cultural Learning Course

Included activity: Private Transfer Auckland Airport to your Auckland Accommodation with Tourcorp

Included activity: Wilderness Jet Experience with Dart River Safaris

Included activity: Doubtful Sound Fiordland Navigator Overnight Cruise

Included activity: The Alpine Restaurant Buffet Dinner

Included activity: Glacier Explorers

Included activity: The Black Labyrinth Subterranean Adventure

Included activity: Zealandia by Night Wildlife Sanctuary Tour

Included activity: Seals, Beach Cruise and Walk with Wilsons - Includes Lunch

Includes: Fully inclusive rental car insurance (excess may apply)

Includes: Afterhours emergency support while touring

Included activity: Electronic Travel Guide and In-Country Support App

Included activity: Franz Josef Glacier Helihiike with Franz Josef Glacier Guides

Included activity: Gondola and Buffet Dinner with Skyline Queenstown

Included activity: Dinner at Camp Estate, Larnach Castle

Included activity: The Panorama Room 3-course Dinner with The Hermitage Hotel

Included activity: Private Footwhistle Glowworm Cave Tour with CaveWorld

Included activity: Lake Taupo Scenic Cruise to the Maori Rock Carvings

Included activity: Interislander Ferry Wellington to Picton with Premium Plus Lounge

: 18 breakfasts, 4 dinners, 1 special dinner

Day 1



Welcome to Auckland

Welcome to Auckland, known in Māori as Tāmaki Makaurau. Auckland is New Zealand's vibrant "City of Sails," and the country's largest metropolitan area. Nestled between the Pacific Ocean and the Tasman Sea. Surrounded by native bush, lush rainforests, and pristine beaches, Auckland is a haven for both adventurers and urban explorers. Wander through world-class museums and galleries in the city centre or enjoy a peaceful retreat at the Auckland Gardens, where stunning landscapes showcase New Zealand's diverse flora. Stroll along the lively waterfront to savour fresh seafood and international cuisine at Viaduct restaurants. For an unforgettable perspective, ascend the iconic SkyTower, New Zealand's tallest structure, and take in panoramic views of the city and its picturesque islands.

Private Transfer Auckland Airport to your Auckland Accommodation with Tourcorp

You will be met at the Auckland airport by the driver and transferred to your Auckland accommodation.

SUGGESTED ACTIVITY - All Blacks Experience

See what it takes to make, shape and be an All Black. Experience first-hand the excitement and emotion of game day. Discover the stories behind some of world rugby's most famous players, moments, and matches.

This guided experience introduces you to the game of rugby including state-of-the-art displays combining sound, images, interactive technology, and hands-on activities. Discover New Zealand's deep passion for our national sport, experience the full force of the All Blacks haka, and tackle interactive zones where you can try out your kicking, catching, line-out, and accuracy skills against legendary All Blacks.

SUGGESTED ACTIVITY - Dinner at the Sky Tower Orbit Restaurant

Soaring high above Auckland you'll discover Orbit, a truly iconic New Zealand brasserie offering diners sensational views - and food to match. Situated at the top of Auckland's Sky Tower, the dining room rotates once every hour, providing a truly unique experience with amazing 360-degree panoramas of the city, the Hauraki Gulf and beyond. Orbit offers a modern dining experience in a relaxed, open atmosphere with a delicious kiwi-inspired a la carte menu that features the best local and seasonal produce. As New Zealand's only rotating restaurant offering 360-degree views, it's an unforgettable experience that never ceases to delight.

Your accommodation: Fable Auckland

Located right on Queen Street the Fable Auckland is boutique and stylish property with an ideal location to enjoy and explore the vibrant heart of the 'City of Sails'.



Day 2



Collect Rental Car

This tour's from price includes an intermediate-sized vehicle, setting you up for comfortable travels. Yet, we understand every adventure is unique! Feel free to select the perfect wheels from our incredible collection of rental cars, spanning from economy hatchbacks to premium SUVs.

Car Instructions

On collection of your rental car, you will be required to sign a rental agreement and provide a credit card for a security bond authorisation. Remember, the bond is only authorised, not charged, at this stage. While your rental rate may include coverage for mechanical breakdowns (please verify your specific car inclusions), you may also have the option to purchase roadside assistance for non-mechanical issues. All drivers must present a physical credit card, valid driving license and passport to be added to the agreement, with potential additional charges for extra drivers. Debit cards may be used on select vehicles. If you are presenting an international drivers license, this must be accompanied by the original domestic license. Drivers under 21 are not permitted, and those aged 21-24 may face a surcharge, both payable directly to the rental company. For detailed information, please refer to your rental car inclusions. See this important information if you are traveling between the North and South Islands on the ferry

Auckland to Waitomo

The drive south from Auckland takes you into the rolling farmland and rich dairy pastures of the Waikato, before arriving in the limestone hills of the Waitomo countryside, which is home to a huge underground network of caves.

Private Footwhistle Glowworm Cave Tour with CaveWorld

Your tour begins as you are picked at the Waitomo iSite and enjoy a scenic shuttle to Caveworld's family owned cave, while your guide provides commentary bringing the rich history of Waitomo to life. Here you will take a short walk through the breathtaking New Zealand bush, keeping an eye out for the native birdlife. Heading down to the entrance of the cave you will discover the beauty of the glowworms, learn about the formation of Footwhistle Cave - known to local Maori as Te Anaroa Cave. You are encouraged to bring along your cameras a tripods to freeze the beautiful twinkling lights in time, with dim solar-powered lights through the cave that allow you to appreciate the magnificent displays and get the perfect shot. Complete your intimate tour with a Kawakawa tea as you relax in a ponga hut nestled into the native surrounds.

Your accommodation: Waitomo Boutique Lodge

Waitomo Boutique Lodge is Waitomo's hidden gem, offering a five star boutique lodge and luxury farm stay in a stunning setting, close to all the central North Island's major attractions.

Meals included: Breakfast



Day 3



The Black Labyrinth Subterranean Adventure

The Legendary Black Water Rafting Company has been guiding adventurous visitors through Ruakuri Cave since 1987. They've found the very best underground location for their unique style of adventure which will see you black water tubing, clambering, jumping and serenely floating through the subterranean waterways of Ruakuri Cave. Over three hours you'll take leaps of faith over cascading waterfalls, gaze up at limestone ceilings awash with glowworms and lazily float through the dark Ruakuri river. At the end of your caving adventure you'll emerge into the daylight of the Waitomo forest.

It is important you understand the risks associated with this activity. For more information please see [here](#). Please watch the Safety Video [here](#).

Your accommodation: Waitomo Boutique Lodge

Waitomo Boutique Lodge is Waitomo's hidden gem, offering a five star boutique lodge and luxury farm stay in a stunning setting, close to all the central North Island's major attractions.

Meals included: Breakfast



Day 4



Waitomo to Taupo

Tongariro National Park is a World Heritage Site. Three active volcanoes form the backbone of this spectacular region. Hiking, fishing, climbing, mountain biking, scenic flights or simply taking a drive to the top of the ski field road at Whakapapa are some of the most popular ways to enjoy the region.

Descending into the trout fishing capital of New Zealand the township of Turangi sits on the Southern shores of Lake Taupo. Next the township of Taupo and New Zealand's largest lake, Lake Taupo. The lake itself is actually a gigantic volcanic caldera formed during one of the world's largest ever eruptions. Just north of the town are the Huka Falls and a short detour to view is advised. The Huka Jet can get you much closer with a thrilling jet boat ride also if you wish. Craters of the Moon is a nearby geothermal reserve with well formed walking tracks around its many bubbling pools and steaming vents.

Lake Taupo Scenic Cruise to the Maori Rock Carvings

Cruise the spectacular Great Lake Taupo to the remarkable Maori Rock Carvings and around the picturesque bays of Lake Taupo. Your captain will provide an informative and entertaining commentary on the volcanic creation of Lake Taupo and the Maori mythology of the region. Marvel at the amazing views of hidden bays and the spectacular snow-capped mountain peaks of Tongariro National Park. Your boat is fully enclosed so you will stay warm while still being able to take those fantastic holiday pictures. It is important you read and understand the risks associated with this activity. For more information see [here](#).

Your accommodation: Acacia Cliffs Lodge

Acacia Cliffs Lodge occupies a simply stunning location with spectacular lake and mountain views along with superb cuisine and secluded luxury yet only minutes from the region's attractions.

Meals included: Breakfast



Day 5



Taupo to Tongariro National Park via The Desert Road

Following State Highway 32 around the Western side of Lake Taupo will bring you to Pureora Forest Park. The Pureora Forest park boasts a wide range of Waikato walks to choose from, many including historical sites and relics left behind from the logging legacy of the Pureora Forest Park. A crawler tractor, vintage steam hauler and historic tractor are all examples easily accessed by 5-10 minute walks. Walks vary in length from easy fifteen minute strolls to rugged three day hikes and the Timber Trail cycleway, each providing their own unique window into the area. Continuing along State Highway 32 and then onto State Highway 47 will lead you into the Tongariro National Park one of New Zealand's three world heritage sites, and clouds permitting you can see the 2,500 metre peak of the still volcanically active Mt. Ruapehu. You might recognise the symmetrical shape of Mt. Ngauruhoe as this was used as the scenery of Mt. Doom in the Lord of the Rings Trilogy.

Walking tracks in and around Whakapapa Village, Tongariro National Park

There are a plethora of walks in and around Whakapapa Village and Tongariro National Park. From short 15 minute hikes to longer 5 hour treks, there is something for every level of fitness. All established tracks are maintained by the Department of Conservation and before heading out on a walk, it is best to check the track conditions and suitability at the local DOC information office in the centre of the village. Below are a selection of the best walks to do: Whakapapa Nature Walk, 15 min loop track Mounds Walk, 20 min one way Tawhai Falls, 20 min one way Ridge Track, 40 min return Taranaki Falls, 2 hour return Whakapapanui Walk, 2 hour return Tupapakurua Falls Track, 5 hour return

Tongariro National Park to Taupo

Leaving Tongariro National Park, you'll journey through striking volcanic scenery, with Mt. Ruapehu and Mt. Ngauruhoe in view. Passing through Turangi, a town known for its fishing, the road hugs the edge of Lake Taupo. The drive offers incredible lake and mountain views, with highlights like Huka Falls and nearby geothermal sites waiting when you reach Taupo. It's a scenic and straightforward route, taking about 1.5 hours.

Your accommodation: Acacia Cliffs Lodge

Acacia Cliffs Lodge occupies a simply stunning location with spectacular lake and mountain views along with superb cuisine and secluded luxury yet only minutes from the region's attractions.

Meals included: Breakfast



Day 6



Taupo to Wellington

The drive around the edge of New Zealand's largest lake leads you to Turangi, the self proclaimed Trout Fishing Capital. You can view the Department of Conservation's National Trout Centre and Hatchery here. You then climb up onto the central plateau and the high country Rangipo Desert. Skirting Tongariro National Park, one of New Zealand's three world heritage sites and clouds permitting you can see the 2,500 metre peak of the still volcanically active Mt. Ruapehu. You might recognise the symmetrical shape of Mt. Ngauruhoe as this was used as the scenery of Mt. Doom in the Lord of the Rings Trilogy. A little further the military town of Waiouru also hosts the Army Museum, an incredible collection of New Zealand's military history and a memorial to its servicemen. Heading south you pass through the rural towns of Taihape, Mangaweka and Bulls before arriving on the Kapiti Coast. The coastal seaside towns of Paraparaumu, Paekakariki and Plimmerton are worth a short detour before arriving into the capital city of Wellington. Plan to take most of the day for this drive.

Wellington City is New Zealand's capital. It sits on a wonderful deep natural harbour and is surrounded by bush clad hills. The city centre itself is quite compact (only around 1 square kilometre) and so exploring on foot is relatively easy. From your city centre accommodation you can easily stroll the cafes and restaurants around Courtenay Place and if you arrive early enough New Zealand's national museum, Te Papa, is also close by.

Zealandia By Night Wildlife Sanctuary Tour

Taking a night tour of Zealandia wildlife eco-sanctuary is an unforgettable experience and one that comes highly recommended. A conservation success and safe haven for some of New Zealand's rarest native animals, Zealandia is home to many remarkable species of birds, reptiles and insects living wild within a beautiful 225 hectare (one square mile) valley, just 10 minutes from the central city.

Your accommodation: Bolton Hotel Wellington

The Bolton Hotel offers contemporary apartment-style accommodation in the heart of Wellington. Just steps from the Parliament buildings and central business district, Bolton Hotel is conveniently close to the best of the city's shops, cafes and restaurants and is within walking distance of Wellington's vibrant waterfront.

Meals included: Breakfast



Day 7



Interislander Ferry Wellington to Picton with Premium Plus Lounge

The 92 km ferry journey between Wellington and Picton, taking around 3 hours, is hailed as one of the world's most beautiful ferry rides. Departing Wellington Harbour, you'll pass landmarks like Pencarrow Head with New Zealand's oldest lighthouse, Red Rocks' seal colony, and Oterangi Bay, famous for its record wind speed. From the Cook Strait, marvel at views of the Kaikōura Ranges and spot dolphins and seabirds. An hour of the trip winds through the stunning Marlborough Sounds, featuring bush-clad mountains, tranquil bays, and crystal-clear waters—a photographer's dream. The journey concludes in the charming town of Picton at the end of Queen Charlotte Sound. When not soaking up the views from the deck, relax in the Premium Plus lounge, offering complimentary drinks, snacks, internet, and luxurious seating for the most comfortable way to cross the Cook Strait.

Collect Rental Car

This tour's from price includes an intermediate-sized vehicle, setting you up for comfortable travels. Yet, we understand every adventure is unique! Feel free to select the perfect wheels from our incredible collection of rental cars, spanning from economy hatchbacks to premium SUVs.

Picton to Abel Tasman National Park

From Picton you'll first travel the Marlborough Sounds coastline between Picton and Havelock. This drive offers spectacular views of the sounds, so be sure to allow plenty of time for stops and sightseeing. Take moment to explore the secluded sandy coves along the narrow road to Portage. Aim to arrive in Havelock for lunch, as this portside town has a great variety of cafes and restaurants to eat at. Stop at the famous Pelorus bridge, just outside of Havelock. From here there are a number of forest walks to stretch your legs on with the most popular being a 30 minute loop through beech, rimu and totara forest. Continue on over the Bryant Range to arrive into Tasman Bay and the city of Nelson. Motueka is a further 45 minutes along the coast and from there it's just a short drive to Kaiteriteri and Marahau, all ideal spots from which to explore the beautiful Abel Tasman National Park.

Abel Tasman National Park

Experience the golden beauty of Abel Tasman National Park, a coastal paradise renowned for its spectacular hiking track, pristine golden beaches, secluded inlets, and private lagoons. With its mild climate and stunning natural environment, it's a cherished destination for New Zealanders nationwide. Why not enjoy a scenic cruise through the Sounds or take a kayaking tour around its many sheltered bays? Relax to the melodious birdsong and get up close to some of the park's many animal residents, including native bats, geckos, birds, marine mammals, fur seals, and dolphins.

Your accommodation: Kimi Ora Eco Resort

Kimi Ora Eco Resort offers panoramic views of Kaiteriteri beach and estuary and is close to the Abel Tasman National Park. Surrounded by beautiful native bush, these chalets offer peace and seclusion.

Meals included: Breakfast



Day 8



Seals, Beach Cruise and Walk

Experience the best of Abel Tasman on this combined beach cruise and walk tour. Cruise into the Tonga Island Marine Reserve and pause to watch the antics of the Resident Fur Seal Colony. After landing at the historic Tonga Quarry Beach, take a two hour, fifteen minute walk over forested land and around the spectacular Bark Bay Estuary, renowned for its cascading waterfalls. Rejoin the cruise at the sheltered golden cove on Medlands Beach.

Your accommodation: Kimi Ora Eco Resort

Kimi Ora Eco Resort offers panoramic views of Kaiteriteri beach and estuary and is close to the Abel Tasman National Park. Surrounded by beautiful native bush, these chalets offer peace and seclusion.

Meals included: Breakfast



Day 9



Marahau to Punakaiki

The drive today takes you along the Buller Gorge and offers some wonderful scenery as you follow this magnificent river. The town of Murchison is a quiet place and a great lunch stop. Underneath its sleepy farming facade is an adventurers' paradise with white water rafting, kayaking, 4WD trips, and some great trout fishing.

The first major town (by this region's standard) is Inangahua, and a small museum tells of the earthquake that hit the region in 1968, leaving 70% of the buildings damaged or inhabitable. Further along the river, one of the must-visit places is Whites Creek and New Zealand's longest swing bridge. Crossing the river, you get magnificent views of the gorge, and once on the other side, there are short bush walks, jet boat rides, and some of the historic gold mining remnants.

The port town of Westport is the largest on the Northern West Coast. A history of gold mining, logging, fishing coal mining gives the town a hard-working feeling. And to reward the hard workers the town has an extraordinary amount of pubs.

There are plenty of activities here, such as caving, bush walks, and surfing, but one of the most popular is to take a trip to Tauranga Bay and the seal colony. Just 15 kilometres south at Cape Foulwind (named by Captain Cook for the difficult sailing conditions and not the smell of the seals!), you will find a breeding colony of New Zealand fur seals. A well-marked and easy 10-minute walking track takes you to the colony where you can see the creatures lazing around or swimming in the ocean.

The spectacular West Coast coastline guides you to Paparoa National Park and to Punakaiki where a walk along the paths around the pancake rocks is a must. Please note there is no supermarket facilities in Punakaiki.

Paparoa National Park

Paparoa National Park on the South Island's West Coast is most famous for its sculpted limestone cliffs, including the Pancake Rocks and blowholes at Dolomite Point. The best place to base yourself for exploring the park is the small village of Punakaiki.

The limestone base of the park makes this a spectacular destination, with karst limestone formations scattered amongst lush green forests and carved out river canyons. There are a number of opportunities for the unguided day tripper to safely experience the subterranean cave systems. The oldest tourist destination in the park is the Fox River Cave Walk, a safe cave walk with 200m of an underground network to explore, or visit the Punakaiki cavern located right beside State Highway 6 – just remember to bring a good flashlight.

To really understand the flora and fauna of the park, make sure to stop and visit the caves and rivers, or for a more adventurous experience, black water rafting with Underworld Adventures. For more information on walks and caves in Paparoa National Park, visit the Department of Conservation website.

Your accommodation: Punakaiki Treehouse

The Punakaiki Treehouse is situated in 3 hectares of NZ native bush and is located 3.2km North of the Punakaiki Pancake rocks.

Meals included: Breakfast



Day 10



Punakaiki to Franz Josef Glacier

The drive South on State Highway 6 takes you through many West Coast towns. The first is Greymouth, the commercial centre for the West Coast. Just south of the town is Shantytown a replica gold rush town with lots of great displays from yesteryear.

The next town is Hokitika and this is a great place to explore the craft and gift stores. The Jade or Greenstone on offer in Hokitika is probably some of the best you will see in the country. The Hokitika Gorge, off the beaten track and inland a little is a spectacular 50 minute detour.

Turquoise waters flowing through a narrow gorge. A great short walk will deliver you to this piece of paradise.

Ross is the site of an old gold mining town and some of the old buildings and workings remain. In fact Ross is still home to one of the few working gold mines left in New Zealand and the local information centre offers you the chance to pan for gold.

Continuing south Hari Hari is the township that Guy Menzies decided to land in (or rather crash land) as he became the first person to fly solo across the Tasman.

Whataroa, a small township on the main road is where you would head off to see one of the worlds rarest birds. The entire population (somewhere between 150 and 200 birds) of the New Zealand white heron or kotuku nest at the Waitangi Roto Nature Reserve and guided tours from October to March will take you there.

Arriving in to the Glacier region you catch your first glimpse of Franz Josef Glacier from a few kilometres out as it flows from the Southern Alps.

Franz Josef township is a lively place with a great atmosphere, plenty of choice to dine out and some wonderful activities to enjoy.

Westland Tai Poutini National Park

Westland Tai Poutini National Park forms part of Te Wahipounamu – South West New Zealand World Heritage Area, and rightly so, as this park has it all. Best explored from either Franz Josef or Fox Glacier village, you can encounter a myriad of landscapes here, from fast-moving glaciers to the wild West Coast beaches. From its highest points in the snow-capped mountains of the Southern Alps, you are rewarded with a visual feast encompassing ancient forests, crackling blue glaciers, pristine rivers, lagoons thriving with birds, and an immense stretch of untouched coastline. A unique feature of the park is the proximity of the Fox and Franz Josef Glaciers to the sea. Both terminal faces are just 300 metres above sea level and pass through the surrounding rainforest, making for an unusual combination of environments. As well as the glaciers, other highlights of Westland National Park are tranquil Lake Matheson and Okarito Lagoon with its teeming bird population. There are numerous ways to explore the park, each offering a different perspective on this remote wilderness. The best way to really appreciate the contrasting landscape is to take to the air; the Twin Glacier scenic flight takes you over both glaciers for spectacular views before landing at the head of one glacier for a truly memorable snow landing. The more adventurous can add a glacier walk with the Franz Josef Helihike. For an informative exploration of the glaciers, a guided walk to the Fox Glacier terminal face is fascinating. With all this wilderness, you can expect the wildlife to be amazing, and a tour of the White Heron Sanctuary during breeding season is a real delight for nature lovers.

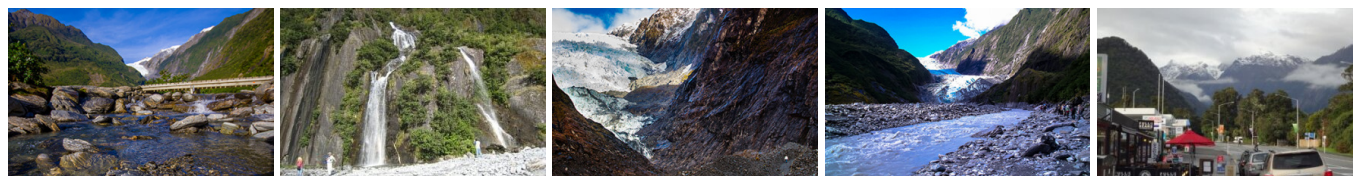
Your accommodation: Westwood Lodge

Westwood is a purpose built lodge, crafted entirely from wood and exquisitely decorated throughout. The lounge is the place to meet to watch the Southern Alps turn a soft pink in the setting sun.

Meals included: Breakfast



Day 11



Explore Franz Josef

Franz Josef is a small yet lively town in the heart of New Zealand's West Coast, best known for its spectacular 12 km-long glacier. The township is surrounded by lush, rainforest-clad mountains and has a vibrant atmosphere with plenty to explore. A variety of scenic walking trails offer incredible views of the glacier, but for a truly up-close experience, a licensed helicopter tour is the only way to set foot on the ice. Beyond the glacier, unwind in the rejuvenating Hot Pools or visit the West Coast Wildlife Centre to spot rare kiwi birds. If you're in the mood for a more relaxed day, the township is home to charming souvenir and gift shops, as well as great dining spots like SnakeBite Brewery and King Tiger. Whether you're chasing adventure or relaxation, Franz Josef is a stunning blend of wild beauty and welcoming hospitality.

Franz Josef Glacier Helihike with Franz Josef Glacier Guides

After a thrilling scenic flight, high above the rugged terrain, you will land on the glacier, ready to undertake a guided glacier hike. Your friendly guide will lead you through some of the most pristine and awe-inspiring glacial scenery in the world. Your guide will choose your route carefully as you go and, with an eye for the most spectacular ice formations, you'll soon be making your way through an extraordinary landscape of towering peaks and glistening blue ice. It is important you read and understand the risks associated with this activity prior to travel. For more information please see here.

Your accommodation: Westwood Lodge

Westwood is a purpose built lodge, crafted entirely from wood and exquisitely decorated throughout. The lounge is the place to meet to watch the Southern Alps turn a soft pink in the setting sun.

Meals included: Breakfast



Day 12



Franz Josef to Queenstown (via Wānaka)

Heading south you pass through the second glacier town of Fox Glacier before heading along the coast and into more classic West Coast bush scenery. We can recommend a stop at Knights Point Lookout elephant seals can often be seen basking on the sandy beaches at the far end of the point. Crossing the massive Haast River you turn inland and head into the valley climbing through mountains littered with waterfalls. The Haast Valley offers a spectacular view of the river and its enormous power. Along the way there is ample opportunity to admire Aspiring National Park and a stop at Roarig Billy Falls will leave you in awe. The Blue Pools near Makarora are a great 30-minute walk. The road from Makarora leads to Lakes Wānaka and Hāwea which will guide you into the stunning lakeside township of Wānaka before heading over New Zealand's highest sealed road, Crown Range Road and dropping into the Wakatipu basin, home to Queenstown. .

Queenstown

Queenstown known in Māori as Tāhuna, is home to many adrenaline-inducing activities. Nestled on the shores of Lake Wakatipu, this alpine town has very distinct seasons, and most adrenaline-filled activities can be accessed year-round. Queenstown is home to jet boating, bungy jumping, rafting, skydiving, paragliding, and even indoor thrills. If you want that rush - head out on the Shotover Jet, dive off the Nevis Bungy, freefall on the Canyon Swing, or Zip line the Gondola. While arguably the brightest gem in New Zealand's crown, Queenstown offers far more than an action-packed getaway. If you're looking for a slightly slower pace, there are plenty of recreational activities, including hiking and biking trails to explore, guided tours, boat cruises, scenic flights, or spa and wellness options to help you get away. Head to the lakefront, eat at one of the al fresco eateries, and soak up the local vibes; catch a ride on the iconic 100-year-old steamship the TSS Earnslaw; or take the Skyline Gondola and enjoy bird's-eye views of the Remarkables mountain ranges and Lake Wakatipu. Pack a picnic and go for a hike, only 20 minutes from Central Queenstown, Coronet Peak opens for summer sightseeing. You can ride the Peak Gondola to the top for panoramic views and hike the trails, or go for a bike ride on many excellent biking trails. In winter, Queenstown becomes a world-class winter resort, with four ski areas and a range of activities, bars, restaurants, and ways to relax and unwind.

Your accommodation: Queenstown Park Boutique Hotel

Queenstown Park Hotel is a boutique hotel with a modern romantic style in the heart of New Zealand's adventure capital. Set in peaceful parkland, savour views of Queenstown's majestic mountains. Enjoy easy access to the vibrant town centre where shopping, cafes and nightlife nestled on the shores of spectacular Lake Wakatipu.

Meals included: Breakfast



Day 13



Wilderness Jet Experience with Dart River Safaris

Journey deep into the heart of the world-renowned Mt Aspiring National Park, where myth, heritage, and fantasy come to life. As one of Queenstown's most exhilarating activities, the Wilderness Jet adventures on a spectacular journey deep into the heart of the world-renowned Mount Aspiring National Park. It is important you read and understand the risks associated with this activity. For more information please see [here](#).

Gondola and Buffet Dinner with Skyline Queenstown

With breathtaking views across Queenstown and Lake Wakatipu, the Skyline Complex is a must-do. Catch the fully enclosed gondola to the summit for a remarkable panorama of the city's surroundings. Wander the outdoor viewing decks then enjoy a gourmet buffet meal in the Stratosphere Restaurant.

Your accommodation: Queenstown Park Boutique Hotel

Queenstown Park Hotel is a boutique hotel with a modern romantic style in the heart of New Zealand's adventure capital. Set in peaceful parkland, savour views of Queenstown's majestic mountains. Enjoy easy access to the vibrant town centre where shopping, cafes and nightlife nestled on the shores of spectacular Lake Wakatipu.

Meals included: Breakfast, Speciality Dinner



Day 14



Queenstown to Te Anau

Passing through the bustling suburb of Frankton, follow the shores of Lake Wakatipu. The Remarkables mountain range towers over you on the stretch of road known as "The Devil's Staircase" leading you to the township of Kingston. You'll venture into Southland before crossing the rolling tussock lands of Mossburn (deer capital of New Zealand) and shortly arriving at Te Anau, the gateway to Fiordland National Park.

Te Anau

It is the gateway to Fiordland National Park and a perfect base to visit Piopiotahi-Milford Sound. The Milford Road originates here, and this is arguably one of the most scenic stretches of highway in the country. Te Anau sits on the shores of spectacular Lake Te Anau, which reaches depths of 417 meters. Te Anau Township is the starting point for many walking tracks, including two of New Zealand's Great Walks, the Milford track and the Kepler track. Apart from hiking, you could go kayaking, lake cruising, fishing, or exploring Te Anau Glowworm Caves. You could go for a bike ride alongside the lake towards Lake Manapouri, on a popular Lake to Lake biking route. Along the way, you will pass a bird sanctuary specialising in Takahe, and other native birds.

Your accommodation: The Cinema Suites

The Cinema Suites in Te Anau offers luxurious, themed accommodation that combines the charm of a classic cinema with modern comfort. Each suite is thoughtfully designed with cinematic decor, featuring plush furnishings, state-of-the-art amenities, and stunning views of the surrounding landscapes.



Day 15



Te Anau to Manapouri

This short drive takes you along the lake edge of Te Anau and across lush southern farmlands to the small township of Lake Manapouri, gateway to Doubtful Sound.

Doubtful Sound Fiordland Navigator Overnight Cruise

Take in the tranquillity of remote Doubtful Sound on this unique overnight wilderness cruise. Beginning in Manapouri with a short boat ride across the lake, you'll be taken by coach over the Wilmot Pass to Deep Cove, Doubtful Sound. Board the Fiordland Navigator, a purpose-built vessel designed like a traditional coastal trading scow. Be accommodated in a private cabin with an ensuite bathroom or a quad-share bunk room with shared bathroom facilities. The Navigator has a large spacious deck for viewing the scenery and wildlife as well as a dining saloon, bar and observation lounge. As you take in the stunning scenery of the Fiord, you'll be provided with a running commentary of the area and its history, points of interest and wildlife. You'll have the opportunity to see dolphins, fur seals and, if you're lucky rare Fiordland penguins. After anchoring in a sheltered cove, choose to explore the shoreline by kayak or stabcraft, or if you're really brave take a dip in the water. In the evening enjoy a buffet dinner prepared on board and served in the dining saloon. Enjoy beer and fine wines from the licensed bar, and spend time star gazing on the upper deck. Following hearty cooked breakfast the next morning you will spend your remaining time exploring other parts of the fiord before returning to Deep Cove for the trip back to Manapouri.

Your accommodation: Fiordland Navigator Overnight Boat in Doubtful Sound

The Fiordland Navigator is purpose built for cruising in the fiords. The vessel offers spacious viewing decks, a comfortable dining saloon and observation lounge.

Meals included: Breakfast, Dinner



Day 16



Manapouri to Dunedin

Your Doubtful Sound Overnight Cruise returns to Manapouri at midday. The drive to Dunedin takes you through classic Southland farmland scenery but if you want to spend the whole day exploring a little off the beaten path than taking the Southern Scenic Route through The Catlins is highly recommended. The route passes through the fishing town of Riverton and Colac Bay before heading east towards Invercargill and continuing along the incredible Otago coastline to Dunedin.

Dinner at Camp Estate, Larnach Castle

Keeping with the historical setting of Larnach Castle, a four-course dinner is offered in a grand Castle Dining Room. This is a trust-the-chef experience where you may indulge in incredible meals and meet other guests. The menu reflects local meats and vegetables, served in a traditional New Zealand-style cuisine with the opportunity to pair with regional wines.

Your accommodation: Camp Estate at Larnach Castle

A luxurious country house built from blue stone and features a spectacular marble staircase. The modern rooms are all double glazed and the reception rooms are all heated by open fires and underfloor heating. Staying at Camp Estate includes entry to Larnach Castle and the grounds.

Meals included: Breakfast, Dinner



Day 17



Dunedin to Mt Cook National Park

Heading north from Dunedin your first stop should be Moeraki to explore the famous and unique boulders strewn on the beach. Before heading inland along the Waitaki Valley you pass through the historic township of Oamaru and its Stone buildings. Take time to head into the old quarter and if your timing is right you may get to see some of the local resident little blue penguins. The Waitaki Valley makes a large contribution to New Zealand's electricity supply with its 3 hydro dams. Arriving into Omarama you are now truly in the high country but don't think these vast empty lands are useless, these are some of the country's most productive merino sheep stations. The turquoise waters of Lake Pukaki guide you the final 45 minutes to Aoraki Mount Cook Village

The Alpine Restaurant Buffet Dinner

The Alpine Restaurant located at The Hermitage Hotel offers sumptuous buffets for breakfast, lunch and dinner, accompanied by spectacular views of Aoraki Mount Cook from every seat. Enjoy a vast buffet including a wide range of foods such as soup, salads, seafood, hot and cold meats and desserts with tea and coffee to follow.

Your accommodation: Hermitage Hotel, Aoraki Wing Premium

The Hermitage Hotel ringed by magnificent snow-capped peaks of the Southern Alps, is a world-renowned tourist destination and has been an icon of superior accommodation and dining since 1884.

Meals included: Breakfast, Dinner



Day 18



Glacier Explorers

Experience 500-year-old icebergs up close on the Aoraki-Mt Cook terminal lake. The Glacier Explorers tour is the only one of its kind in New Zealand and one of only three in the world! Very few glaciers terminate into lakes and even fewer of them are accessible. See towering ice cliffs and floating icebergs from the safety of a specially designed boat. These boats provide a safe way to view unseen and inaccessible areas of New Zealand's largest glacier The Tasman.

Walking Tracks in Aoraki-Mt Cook National Park

Aoraki-Mt Cook Village offers a variety of short scenic walks suitable for all ages and fitness levels. Start your adventure at the Department of Conservation Information Centre, where you can learn about track conditions, local history, and the area's wildlife. Here are a few popular walks to explore: Bowen Bush Walk: 10-minute return Glencoe Walk: 10-minute return Red Tarns Track: 2-hour return Kea Point Walk: 2-hour return Sealy Tarns Track: 3 - 4 hours return Please be aware that at Aoraki/Mount Cook, you will need to pay for parking at the White Horse Hill car park. The cost is \$5 per hour or \$25 for the full day. A 20-minute free period is available for quick drop-offs.

The Panorama Room 3-course Dinner with The Hermitage Hotel

Since first opening its doors in 1969, The Panorama Room has gained a reputation as being one of the best restaurants in New Zealand. This reputation is reflected in the numerous awards the restaurant has received over the years. A simple philosophy of using just the freshest, local ingredients, in particular from New Zealand's South Island, is still the secret to its success today. The menu has a strong international influence and reflects both the establishment's taste and the fact that most of the chefs have travelled and worked widely throughout the world.

Your accommodation: Hermitage Hotel, Aoraki Wing Premium

The Hermitage Hotel ringed by magnificent snow-capped peaks of the Southern Alps, is a world-renowned tourist destination and has been an icon of superior accommodation and dining since 1884.

Meals included: Breakfast, Dinner



Day 19



Aoraki/Mt Cook National Park to Christchurch

Leaving Aoraki Mt Cook National Park, travel a short distance for a stop at the visitor centre on the southern shores of Lake Pukaki. Learn about the formation of the region and take in the spectacular views of Aoraki-Mount Cook. Along the way, you'll reach Lake Tekapo which also displays the same reflective qualities as Lake Pukaki, making the waters bright turquoise. It's a great place to take a scenic flight, soak in a hot spring or just marvel at the magnificent views. From here you travel through Burkes Pass and into the rich farming valley that surrounds Geraldine. Continue across the vast Canterbury Plains to Christchurch.

Your accommodation: Merivale Manor House

Originally built in the 1880's, Merivale Manor has been transformed into elegant motel and apartment accommodation. Less than 200 metres to central Merivale with its premier shopping, restaurants, cafes and bars.

Meals included: Breakfast



Day 20



Return Your Vehicle to Christchurch Airport

It's time to return your rental car and let the South Island journey come to an end. If time allows spend the day exploring more of Christchurch, we'd suggest a leisurely drive up the Port Hills for some great sites and then over to the harbour of Lyttelton, before circling through the tunnel and back to the airport to continue your journey home.

Farewell from Aotearoa / New Zealand

Bid farewell to Aotearoa / New Zealand, taking with you unforgettable memories of its breathtaking landscapes and incredible adventures. In Māori, it is said mā te wā, which is not goodbye, it is see you soon!

Tour details

Departures:	Daily
Tour type:	Self Drive Tour (FTNZ ONLY)
Starts:	Auckland
Finishes:	Christchurch
Tour length:	20
Accommodation:	Boutique Lodges & Hotels
Car/transport type:	

Accommodation summary

Day 1	Fable Auckland
Day 2	Waitomo Boutique Lodge
Day 3	Waitomo Boutique Lodge
Day 4	Acacia Cliffs Lodge
Day 5	Acacia Cliffs Lodge
Day 6	Bolton Hotel Wellington
Day 7	Kimi Ora Eco Resort
Day 8	Kimi Ora Eco Resort
Day 9	Punakaiki Treehouse
Day 10	Westwood Lodge
Day 11	Westwood Lodge
Day 12	Queenstown Park Boutique Hotel
Day 13	Queenstown Park Boutique Hotel
Day 14	The Cinema Suites
Day 15	Fiordland Navigator Overnight Boat in Doubtful Sound
Day 16	Camp Estate at Larnach Castle
Day 17	Hermitage Hotel, Aoraki Wing Premium
Day 18	Hermitage Hotel, Aoraki Wing Premium
Day 19	Merivale Manor House