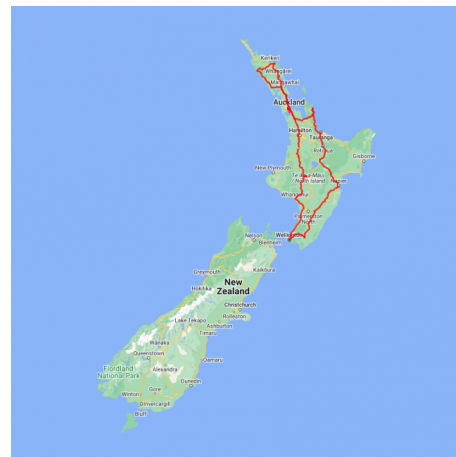


## 21 Day Ultimate North Island Tour

This fabulous tour of the North Island captures everything that is special about the region. You'll visit beautiful beaches and bays in Northland and the Coromandel, the wine regions of Hawke's Bay and Martinborough and the cultural heartland of Rotorua. There is also time to explore our two largest cities, both vibrant but offering very different experiences. In Auckland you'll sail a yacht on the harbour and in Wellington visit the wildlife sanctuary within the city, home to some of our rarest wildlife. There is so much to see and do during this holiday and when you're tired after a day exploring, you'll be greeted by your hosts at the welcoming lodges and bed and breakfasts that make up this package.

Starts in: Auckland  
 Finishes in: Auckland  
 Length: 21days / 20nights  
 Accommodation: Boutique Lodges & Hotels  
 Can be customised: Yes

This itinerary can be customised to suit you perfectly. We can add more days, remove days, change accommodations, mix it up, add activities to suit your interests or simply design and create something from scratch. Call us today to get your custom New Zealand itinerary underway.



### Inclusions:

Includes: Late model rental cars

Includes: Unlimited kms

Includes: Airport & ferry terminal rental car fees

Includes: Comprehensive tour pack (detailed itinerary, driving instructions, map/guidebooks, brochures)

Included activity: Private Transfer Auckland Airport to your Auckland Accommodation with Tourcorp

Included activity: Te Ra Guided Experience, Cultural Experience and Hangi Buffet Lunch at Te Puia

Included activity: Zealandia by Night Wildlife Sanctuary Tour

Included activity: Private Footwhistle Glowworm Cave Tour with CaveWorld

: 20 breakfasts, 1 lunch, 1 dinner

Includes: Fully inclusive rental car insurance (excess may apply)

Includes: GPS navigation

Includes: Additional drivers

Includes: 24/7 support while touring New Zealand

Included activity: Electronic Travel Guide and In-Country Support App

Included activity: Gannet Safaris

Included activity: America's Cup Sailing Experience with Explore

Included activity: Cape Reinga Scenic Flight and Guided Tour with Salt Air

## Day 1



### Private Transfer Auckland Airport to your Auckland Accommodation with Tourcorp

You will be met at the Auckland airport by the driver and transferred to your Auckland accommodation.

### Welcome to Auckland

Kia ora! Welcome to Auckland, known in Māori as Tāmaki Makaurau. Auckland is New Zealand's vibrant "City of Sails," and the country's largest metropolitan area. Nestled between the Pacific Ocean and the Tasman Sea, it offers something for everyone. Surrounded by native bush, lush rainforests, and pristine beaches, Auckland is a haven for both adventurers and urban explorers. Wander through world-class museums and galleries in the city centre or enjoy a peaceful retreat at the Auckland Gardens, where stunning landscapes showcase New Zealand's diverse flora. Stroll along the lively waterfront to savour fresh seafood and international cuisine at the Viaduct restaurants. For an unforgettable perspective, ascend the iconic SkyTower, New Zealand's tallest structure, and take in panoramic views of the city and its picturesque islands.

### Your accommodation: Legacy Airedale Hotel

Legacy Airedale Hotel Auckland is located on a landmark site on Queen Street in the heart of Auckland City. This superb art deco style hotel is conveniently located in the city's vibrant cultural, shopping and central business district.



## Day 2



### Collect Rental Car

Choose a car to best suit your needs from our fantastic rental car range. From compact economy, hatchbacks to prestige SUVs.

### Explore Auckland

Perched on the edge of a large natural harbour, New Zealand's "City of Sails" offers the best of both worlds. Sandy beaches, native bush and lush rainforests give way to a vibrant urban culture, humming with life. Spend time in the Viaduct Harbour, try your hand at sailing an America's Cup yacht or take the ferry to nearby Waiheke Island for a gourmet food and wine experience. If you're looking for a lovely walk, venture to the top of Auckland's highest volcano, Mt Eden, and take in soaring views of the gulf or hop on the short ferry to Rangitoto Island and hike to the top of the volcanic island. Immerse yourself in nature's beauty at the expansive Auckland Botanical Garden's, sprawled across 156 acres of lush land and native forest on Hill Road. Pack a picnic, soak up the sunshine, and delight in the melodious birdsong during a peaceful lunch. Head up to the Sky Tower, standing at just over 300m tall (about 1,000 feet) and have a meal in the 360-degree revolving restaurant. Scale the outermost perimeter of the Harbour Bridge or test your stomach and bungee off both. To end your day, catch a cab to Ponsonby Road and sample some upmarket culinary delights.

### America's Cup Sailing Experience with Explore

Participate as crew on an authentic America's Cup yacht. Take the helm, exert energy on the grinders or sit back and enjoy the action and scenery as you sail the beautiful Waitemata Harbour. Experience the excitement of sailing, no experience necessary. Feel the thrill of the wind in your face as you tack and jibe. These powerful and highly engineered race vessels are usually the domain of billionaires and elite professional yachties. Still, this unique two-hour sailing experience allows everyone to sail these Grand Prix racing machines. America's Cup is the world's oldest and most prestigious sporting trophy and ultimate yachting regatta. Experience it firsthand, sailing these remarkable vessels on the harbour that hosted the America's Cup in 2000 and 2003.

## SUGGESTED ACTIVITY - Auckland Sky Tower Admission

Standing at 328 meters (just over 1000 feet) - the Sky Tower is the tallest man-made structure in New Zealand and offers panoramic views of the Auckland landscape. Travel in the glass-fronted lift to one of three spectacular viewing platforms, or for a little more excitement do a SkyWalk - an outside loop around the pergola 192 meters (just over 600 feet) above ground. If you're really bold, Take the quick way down and SkyJump off the tower - a controlled free fall to the base.

Inside, the Sky Lounge offers coffee and light meals while the iconic Orbit Restaurant is Auckland's only 360-degree revolving dining experience.

---

## SUGGESTED ACTIVITY - All Blacks Experience

See what it takes to make, shape and be an All Black. Experience first-hand the excitement and emotion of game day. Discover the stories behind some of world rugby's most famous players, moments, and matches.

This guided experience introduces you to the game of rugby including state-of-the-art displays combining sound, images, interactive technology, and hands-on activities. Discover New Zealand's deep passion for our national sport, experience the full force of the All Blacks haka, and tackle interactive zones where you can try out your kicking, catching, line-out, and accuracy skills against legendary All Blacks.

---

## SUGGESTED ACTIVITY - Wētā Workshop Unleashed

Explore worlds of horror, sci-fi and fantasy in the making. An exciting, realistic, and authentic experience, with three fully developed and original film concepts: A nail-biting horror Fauna, a fantasy epic Age of the Ever-Clan, and the mind-bending sci-fi Origins.

A 90-minute guided experience through fully themed environments, including immersive horror, fantasy, and sci-fi story worlds. Be immersed by a specially-created unique sweeping cinematic soundtrack, animatronic creatures, physical and digital interactives, hyper-realistic sculpted giants and characters, a horror house experience, and much more.

---

## Your accommodation: Legacy Airedale Hotel

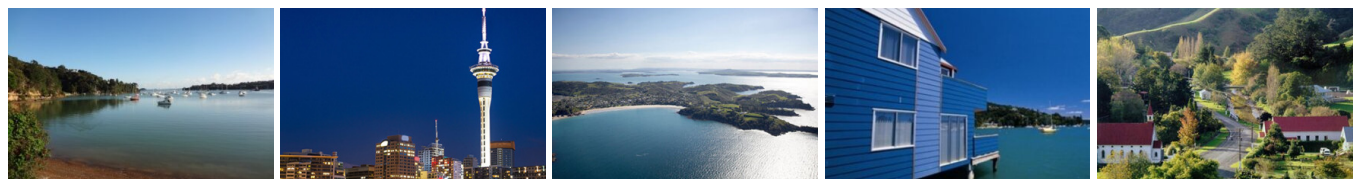
Legacy Airedale Hotel Auckland is located on a landmark site on Queen Street in the heart of Auckland City. This superb art deco style hotel is conveniently located in the city's vibrant cultural, shopping and central business district.

Meals included: Breakfast



---

## Day 3



### Auckland to Russell

The drive from Auckland to the Bay of Islands normally takes around three and a half hours, but plan to take a little longer for there are many things to see along the way. Stretch your legs in Puhoi, New Zealand's only Bohemian settlement. Go through Warkworth, and Whangarei and see the world famous hundertwasser toilets in Kawakawa. Arriving into Russell via the Opua Ferry, you'll be greeted by lush bush-clad hillsides dropping to golden sandy beaches.

---

## Your accommodation: Arcadia Lodge, Russell

Arcadia Lodge is a Russell landmark, a turn of the century home and luxury bed and breakfast overlooking Russell's tranquil Matauwhi Bay.

Meals included: Breakfast



---

## Day 4





## Explore Bay of Islands

Commonly known as the 'winterless north'; New Zealand's Bay of Islands is made up of over 140 subtropical atolls. Renowned for its untouched beaches, abundant marine life, and idyllic climate, this tropical paradise ticks all the boxes. Spend some time on a remote stretch of beach, or see the dolphins on an ocean safari. If diving is your thing, take the morning to descend the Rainbow Warrior - The Greenpeace flagship sunk by French saboteurs in 1985. Wander around Russell, a whaling port founded in 1843. Learn about our culture in historic Waitangi, the site where The Treaty of Waitangi was signed in 1840 between the Māori and Europeans. Alternatively, you may like to take a day tour to Cape Reinga, the very top of the North Island.

---

### SUGGESTED ACTIVITY - R. Tucker Thompson Full Day Sailing

Experience the Bay of Islands the old-fashioned way with a cruise on the R. Tucker Thompson, a traditional gaff-rigged schooner with her own unique history. On the Full Day Sail, be as active as you like – take the helm, help set the sails, ride the bowsprit and climb the rigging – or simply relax while the crew command this impressive ship as she sails across the Bay. During your sail, the crew will share some of the rich history of the area with you. Step ashore and explore a secluded island or take a swim while your barbeque lunch is prepared. About the R. Tucker Thompson - Built from 1970-1985, the R. Tucker Thompson's design is based on the halibut schooners of the North West American coast. With a lofty rig of varnished oregon spars, Kwila decks and bulwarks and brasswork features, she looks the part of a 19th century working ship: purposeful and square-shouldered, but fast enough to out-run the law!

---

### SUGGESTED ACTIVITY - Hole in the Rock Cruise with Fullers GreatSights

Board your cruise and take in the stunning views as you glide out through the islands and along the Rakaumangamanga Peninsula to Cape Brett, where a historic lighthouse keeps watch over and Piercy Island/Motukōkako, or as it is popularly known as the Hole in the Rock. According to Māori legend, local warriors used to paddle through the Hole in the Rock in their canoes before departing for battle. Drops of water from the cave roof above were a good omen. If conditions permit, your skipper will expertly guide the ship through the narrow space. Keep an eye out for common and bottlenose dolphins, whales, and other marine life during your cruise, and have your camera ready as you get up close to the action. Stop off at Otehei Bay on Urupukapuka Island where you have time to relax, take a walk, have a swim, or enjoy a bite to eat and drink from the on-site fully licensed cafe. The purpose-built catamaran is licensed by DOC (the Department of Conservation) for dolphin viewing and the crew has years of experience locating dolphins in these waters.

---

### Your accommodation: Arcadia Lodge, Russell

Arcadia Lodge is a Russell landmark, a turn of the century home and luxury bed and breakfast overlooking Russell's tranquil Matauwhi Bay.

Meals included: Breakfast



---

## Day 5



### Cape Reinga Scenic Flight and Guided Tour with Salt Air

Experience the beauty of the North from both air and land. Take a spectacular scenic flight to Cape Reinga over Whangaroa Harbour and the Rangaunu Harbour as well as Coopers Beach, Doubtless Bay and Ninety Mile Beach.

---

### Your accommodation: Arcadia Lodge, Russell

Arcadia Lodge is a Russell landmark, a turn of the century home and luxury bed and breakfast overlooking Russell's tranquil Matauwhi Bay.

Meals included: Breakfast



## Day 6



### Paihia, Bay of Islands to Warkworth via Waipoua

Heading west from the Bay of Islands you leave the Pacific Ocean and soon arrive into the Hokianga and the wilder seas of the Tasman. The small townships of Omapere and Opononi have a great seaside feel and the perfect place to stop for an ice cream. The route now heads south and into the Waipoua Forest, home to the massive Kauri trees. Make sure you allow time to take a few short walks that are signposted as you pass through the region. Not to be missed is the 5 minute loop to view the largest of all the trees Tane Mahuta. Heading back across country the Matakoho Kauri Museum is an award winning museum and has extensive displays of the regions logging, farming and social history. Just a short drive from Warkworth towards the coast is the small township of Matakana and a little further you will find the often deserted beaches of the Tawharanui Marine Reserve.

### SUGGESTED ACTIVITY - Ngawha Springs

Bathe in the healing waters at Ngawha Springs and let the ancient energy revitalise your senses while the minerals from deep in the earth permeate your body. The mineral-rich hot waters of Ngawha Springs bubble up from deep within the Earth. Nestled in the heart of Te Tai Tokerau, Northland, the springs have a long history of being a restorative and healing place to visit. The people of Ngapuhi have attended the natural springs to replenish wairua (spirit), alleviate the sensation of pain, and repair common ailments.

### Your accommodation: Woodhouse Mountain Lodge Warkworth

Contemporary secluded villa accommodations in paradise-like grounds are set high above surrounding land, meaning privacy is guaranteed and views extend as far as the Hauraki Gulf. Facilities include a restaurant, outdoor pool, sauna, day spa treatments, cocktail bar, and extensive grounds to explore.

Meals included: Breakfast



## Day 7



### Mangawhai to Whitianga

Leaving the idyllic Warkworth region, head south on State Highway one towards Auckland. The drive takes you through farming regions, and down through the bustling center of Auckland City. From there it's across the fertile Hauraki Plains towards the Thames Estuary, a haven for wildlife, in particular, the shorebirds at Miranda. You then cross the Southern Coromandel Ranges through to the wonderful east coast of the peninsula and the harbour town of Tairua. From here, head north to Whenuakite before turning off to head back towards the Pacific Ocean and your final destination, Hahei.

### Your accommodation: Hahei Bed & Breakfast

Hahei Bed & Breakfast, you will be able to look forward to quiet surroundings, large swimming pool and subtropical gardens. Relax into this idyllic environment, and prepare for the perfect beach holiday! You'll be able to enjoy the comfort of this peaceful, fresh-styled property.

Meals included: Breakfast



## Day 8



### Hot Water Beach

Known for its naturally heated geothermal springs, you can dig a spa pool in the sand during low tide and soak in the warm waters while enjoying breathtaking coastal views. With its golden sands, dramatic surf, and tranquil surroundings, Hot Water Beach is the perfect blend of relaxation and adventure.

### SUGGESTED ACTIVITY - Cathedral Cove Classic Sea Kayak Tour

Considered one of the best sea kayaking trips in the country the Cathedral Cove Classic has got it all. The Te Whanganui-A-Hei Marine Reserve opens up a sea kayaking paradise full of beaches, islands and rock gardens that are just waiting to be explored. Paddle through sea caves, interact with the local marine life and discover the thrill of kayak sailing with the wind on your back. To top it off you land at Cathedral Cove where you will be treated to the 'world famous' cappuccinos and hot chocolates on the beach! Cathedral Cove Sea Kayaking use very stable double sea kayaks and quality safety equipment. No experience is necessary and a qualified guide accompanies throughout and offers full instructions and assistance. It is important you read and understand the risks associated with this activity. For more information please see [here](#).

### Your accommodation: Hahei Bed & Breakfast

Hahei Bed & Breakfast, you will be able to look forward to quiet surroundings, large swimming pool and subtropical gardens. Relax into this idyllic environment, and prepare for the perfect beach holiday! You'll be able to enjoy the comfort of this peaceful, fresh-styled property.

Meals included: Breakfast



## Day 9



### Hahei to Rotorua via Tauranga

Today you'll be leaving the Coromandel Peninsula and passing through the town of Whangamata, a popular tourist destination for Kiwi holidaymakers and home to one of the best beaches in the region. Stop in Wahi to view its operational open cast gold mine - just follow the signs to a unique vantage point overlooking the Martha Mine. For rail enthusiasts, be sure to take a trip on the Goldfields Railway along its historic and scenic track. Continue on through the Bay of Plenty and the portside city of Tauranga. Your driving route now takes you along the Pyes Pa Road to Rotorua. If Lord of the Rings is your thing take a detour along State Highway 29 to Matamata, home to the fictional Tolkien village, Hobbiton. As you arrive into Rotorua take in the spectacular lake views along with clouds of steam rising from multiple geysers across the region.

### SUGGESTED ACTIVITY - Mount Tarawera & Orakei Korako Thermal Explorer by Floatplane with Volcanic Air

From above Mount Tarawera's impressive views include vast volcanic rifts, distant national parks, and our treasured lakes. Flying south on a floatplane, you will gain an appreciation of what local Maori refer to as the 'Sisters of Fire'. Here, volcanic activity has pierced the earth's surface across the fault line forming the reserves of Waimangu and Wai-O-Tapu which, when viewed from above, display a spectacular palette of nature's most vibrant colors. Landing at Orakei Korako, 'the Hidden Valley', is an amazing opportunity to experience hot springs, gushing geysers, and the natural beauty of this geothermal wonderland.

### Your accommodation: Pullman Rotorua

Pullman Rotorua is surrounded by surreal scenery and iconic attractions. Discover shooting geysers, bubbling mud, natural hot springs and magical forests.

Meals included: Breakfast





## Day 10



### Te Puia: Te Ra Guided Experience, Cultural Experience and Hangi Buffet Lunch

Embark on a guided tour through the heart of Māori craftsmanship and heritage at the New Zealand Māori Arts & Crafts Institute. Explore the renowned schools of greenstone carving, wood carving, and flax weaving, where master artisans and students bring ancient techniques to life. Your journey continues at Rotowhio Pā, a living Māori village, and the Kiwi Conservation Centre, where you'll get a rare glimpse of New Zealand's iconic and endangered Kiwi bird. As you delve into Te Whakarewarewa geothermal valley, marvel at the dramatic landscapes shaped by geothermal activity, including the awe-inspiring Pōhutu Geyser, the largest active geyser in the Southern Hemisphere. After your explorations, indulge in Te Puia's world-famous hāngī buffet lunch, served in Pātaka Kai Restaurant, Bar & Café. Enjoy a delectable array of traditional Māori cuisine, though menus are subject to change to highlight seasonal specialties. The cultural highlight of your visit will take place in the beautifully carved meeting house, Te Aronui a Rua. Here, you'll be welcomed with a pōhiri (traditional welcome), followed by a captivating cultural performance featuring waiata (song), mōteatea (traditional chant), poi, and the powerful haka. This immersive experience at Te Puia offers a deep connection to Māori culture, artistry, and the natural wonders of New Zealand.

### Your accommodation: Pullman Rotorua

Pullman Rotorua is surrounded by surreal scenery and iconic attractions. Discover shooting geysers, bubbling mud, natural hot springs and magical forests.

Meals included: Breakfast, Lunch



## Day 11



### Rotorua to Napier

This drive will take you through the thermal region just south of Rotorua. Home to a plethora of unique geothermal attractions including boiling mud pits, natural hot springs and steaming geysers, this area is a must do before you move on to Napier. Notable attractions are Wai-O-Tapu, Waimangu and Craters of the Moon.

Continue on to Taupō and marvel at the lake, a giant crater formed following a volcanic eruption in the year 180 CE. As you approach the town, be sure to stop at Huka Falls to view the spectacular sight of hundreds of cubic metres of water spilling every second down the narrow 11 metre drop. For an extra thrill take a jet-boat ride at the base of the falls. Leaving Taupō, follow the road as it climbs the rugged Ahimanawa Range before descending back down the Pacific Coast to art deco coastal township of Napier.

### Walking tracks in and around Hawkes Bay

Hawke's Bay offers a variety of scenic walks, from coastal paths to forest trails, perfect for exploring the region's natural beauty. Whether you're looking for a short stroll or a more challenging hike, there's something for everyone. Be sure to check with the Department of Conservation for current conditions before heading out.

### SUGGESTED ACTIVITY - Triple Chocolate Dipper Tour with the Silky Oak Chocolate Company

A true chocolate indulgence combining chocolate tasting at Silky Oak Chocolate factory shop, entry into the Chocolate "Thru' the Ages" Museum, a Chocolate drink (or tea/coffee), chocolate muffin/ slice, served with liquid chocolate and cream at their Café. &nbsp;You'll be presented with a bonus take-home gift - chocolate of course! This is chocolate overload for serious chocoholics!

### SUGGESTED ACTIVITY - Wai-O-Tapu Thermal Wonderland

Wai-O-Tapu Thermal Wonderland is a spectacular showcase of New Zealand's colourful and unique geothermal elements sculpted by thousands of years of volcanic activity. You will be introduced to a diversely different natural landscape, extending over 18-sq. km. Enjoy viewing the volcanic features as you walk at your own pace along well-defined tracks. Relax in the first-class Visitor Centre, home to the Gift Shop and Café facilities. Visit the Mud Pool, the largest in New Zealand, it was originally the site of a large mud volcano which was destroyed through erosion in the 1920s. See the history and beauty of the Lady Knox Geyser at 10:15 am every day where a daily eruption happens of up to 20 metres.&nbsp;

## Your accommodation: McHardy Lodge

This beautifully restored, single-storey 1890's residence is nestled in a quiet cul de sac on Napier Hill, a great location from which to explore the Art Deco city. Experience a boutique Bed & Breakfast with unparalleled facilities and historic character rooms.

Meals included: Breakfast



---

## Day 12



### Explore Hawke's Bay

Discover Hawke's Bay, known in Māori as Te Matau-a-Māui or the fish hook of Māui. This is a region renowned for its Mediterranean charm, iconic Art Deco architecture, and award-winning wineries. Explore Mission Estate, the birthplace of New Zealand wine, or tour vineyards for a deeper dive into its winemaking legacy. Fans of the 1930s can enjoy a Vintage Car Tour, showcasing Napier's architectural gems. Outdoor enthusiasts can cycle over 200km of scenic trails or unwind at pristine beaches like Ocean and Waimarama. Indulge your taste buds with local delights, from honey and chocolate to fresh orchard produce. The Hawke's Bay is also home to an abundance of wildlife, head out on a Gannet Safari or educate yourself at the National Aquarium of New Zealand.

### Gannet Safaris

Drive along the scenic coast from Napier to Te Awanga and join Gannet Safaris Overland and the world's largest, most accessible gannet colony at Cape Kidnappers. Gannet Safaris has been guiding visitors over Cape Kidnappers for over 35 years and their safaris are the only way to be driven right to within a few feet of these remarkable birds. You will travel in comfort in air-conditioned 4 x 4 wheeled vehicles, through Cape Kidnappers Station - traversing riverbeds, broad rolling pastures, stands of native bush, steep gullies and breath-taking inclines. There is a stop on the way at a spectacular cliff top with panoramic views of Hawke Bay right across to Mahia peninsular. The 36km, three hour trip includes a commentary by your tour guide/driver on the farming operation on Cape Kidnappers Station and an introduction to the gannets. On arrival at the gannets you can stretch your legs and take in the scenery from your position at the brink of the cliff's edge, 100 metres above the ocean!

---

### SUGGESTED ACTIVITY - Hawke's Bay Half Day Wine Tour with Grape Escape

This wine tasting tour is designed for casual imbibers and wine aficionados. Meet like-minded people and share an appreciation of Hawke's Bay's fantastic wines. Taste great wines made with passion and learn of the area's unique growing conditions. Take home outstanding wines and wonderful memories. Join a fun filled wine tasting afternoon in the sun driving through absolutely stunning scenery. Meet like-minded people and share an appreciation of this region's fantastic wine. Visit four to five wineries and enjoy a cheese platter on the grounds of the Ngatarawa Vineyard beside the lily pond.

---

## Your accommodation: McHardy Lodge

This beautifully restored, single-storey 1890's residence is nestled in a quiet cul de sac on Napier Hill, a great location from which to explore the Art Deco city. Experience a boutique Bed & Breakfast with unparalleled facilities and historic character rooms.

Meals included: Breakfast



---

## Day 13





## Napier to Martinborough

As you leave the rolling countryside of the Hawke's Bay you'll be greeted with some of the country's richest dairy farmland in the Manawatu Gorge. Continue on through the Wairarapa region and stop in the Pukaha Mount Bruce Wildlife Centre, where you can see some of New Zealand native animals. Take another break in Masterson, and visit the interactive Woolshed Museum to learn about sheep farming in New Zealand. As you drive south, a visit to historic Greytown is a must-do. Take in the restored Victorian buildings and make time for a cup of tea at one of its quaint cafes. Leaving state highway 2 you will cross over the Ruamahanga River into Martinborough wine country your destination for the day.

---

### SUGGESTED ACTIVITY - Martinborough Half Day Wine Tour with Martinborough Wine Tours

Visit wonderful vineyards such as Te Kairangi Wines, Tirohana Estate, Cabbage Tree Vineyard and Martinborough Vineyard on this half day tour of the premium wine region of Martinborough. Taste the wines, learn about the development of the region, its people and characters from knowledgeable guides.

---

### Your accommodation: The Martinborough Hotel

At the Martinborough Hotel, indulge in the elegant surroundings of this 1882 building. There are nine Verandah Rooms, at the top of the grand flight of stairs and seven spacious Garden Rooms finished in a restful simple country style.

Meals included: Breakfast



---

## Day 14



### Cape Palliser and the South Coast

Just around 45 minutes south of the town of Martinborough will bring you to one of the most spectacular coastlines in the country. Rocky shores and tiny settlements feature as you head towards the magnificent views from the Cape Palliser lighthouse. New Zealand fur seals make these rocky shores and outcrops their home and offer some great photo opportunities. The small township of Ngawi is also quite a unique spot. As you approach you will be forgiven for thinking it's a massive graveyard for old tractors but in fact it's a bustling fishing community. Crayfish are the main catch and massive tractors and bulldozers are used to haul the boats from the water and over the pebble beach. Heading back towards Martinborough a detour to the Lake Ferry Hotel and some local seafood is highly recommended.

---

### Your accommodation: The Martinborough Hotel

At the Martinborough Hotel, indulge in the elegant surroundings of this 1882 building. There are nine Verandah Rooms, at the top of the grand flight of stairs and seven spacious Garden Rooms finished in a restful simple country style.

Meals included: Breakfast



---

## Day 15



## Martinborough to Wellington City

Cross the Remutaka Ranges as you make your way to New Zealand's capital city, Wellington. Often compared to Melbourne, Wellington is vibrant cultural hub. Home to the nation's centre of government. Legislation happens in the aptly named 'Beehive', an executive wing attached to the Houses of Parliament. At 1km squared, the city centre (easily traversed on foot) has an international feel and is peppered with underground art shows, alleyway cafes and New York style delis. Take in the boardwalk view as you stroll to Te Papa Museum or indulge your cinematic side exploring Weta Workshop, the Oscar Award winning design studio for Lord Of The Rings. For a taste of vintage fashion, spend some time (and dollars!) on Cuba Street browsing the boutiques. Work off last night's dinner with a cycling tour of Oriental Bay and undo your good work with a Hokey Pokey ice-cream in the sun. For those heading further down, the capital is where you board the ferry crossing the Cook Strait to the South Island.

### Your accommodation: Bolton Hotel Wellington

The Bolton Hotel offers contemporary apartment-style accommodation in the heart of Wellington. Just steps from the Parliament buildings and central business district, Bolton Hotel is conveniently close to the best of the city's shops, cafes and restaurants and is within walking distance of Wellington's vibrant waterfront.

Meals included: Breakfast



## Day 16



### Wellington

Wellington known in Māori as Te Upoko o Te Ika a Maui is home to New Zealand's centre of government. Often referred to as 'mini Melbourne', this windy city is a melting pot of art, culture, food, and fashion. Quirky laneway bars, underground art shows, and hipster eateries make up its inner-city vibe, while a host of sandy beaches outside the urban bustle bring a cheerful holiday feel. Head to Te Papa Museum for a history lesson and a ticket to one of its many international exhibitions or jump aboard the Wellington Cable Car - the only running funicular railway in the country. For those with an eye for boutique, fashion wander through Cuba St to sample some of the city's best vintage stores. Break for coffee at a hipster cafe and be sure to snap a pic outside the 'Beehive', New Zealand's parliamentary debate chamber. Go behind the scenes at Weta Workshop Experience, the Oscar Award Winning design studio behind Lord Of The Rings, The Hobbit, and Avatar. If you're a foodie at heart, a two-hour round trip to Martinborough is a must-do. Take your time as you wind through spectacular wine country. For an educational day out, learn about New Zealand's native species at Zealandia, the world's first fully-fenced eco-sanctuary and home to over 40 types of endangered and native birds.

### SUGGESTED ACTIVITY - Wētā Workshop Experience + Guided Transfers

Get the full experience to Wētā Workshop and back with a guided transfer. Also, bag some other cool perks that will make your experience extra special. Learn about the real props, costumes and creatures created for your favourite films. Interact with cool stuff from the Weta workshop creative departments and catch an artist at work on the tour stage. Discover the filmmaking technique of miniature effects and learn how they are built for hit TV and film productions. Get up close to the props, weapons and costumes created for The Lord of the Rings, Power Rangers, The Great Wall, Avatar, District 9, and more.

### Zealandia By Night Wildlife Sanctuary Tour

Taking a night tour of Zealandia wildlife eco-sanctuary is an unforgettable experience and one that comes highly recommended. A conservation success and safe haven for some of New Zealand's rarest native animals, Zealandia is home to many remarkable species of birds, reptiles and insects living wild within a beautiful 225 hectare (one square mile) valley, just 10 minutes from the central city.

### Your accommodation: Bolton Hotel Wellington

The Bolton Hotel offers contemporary apartment-style accommodation in the heart of Wellington. Just steps from the Parliament buildings and central business district, Bolton Hotel is conveniently close to the best of the city's shops, cafes and restaurants and is within walking distance of Wellington's vibrant waterfront.

Meals included: Breakfast



## Day 17



### Wellington to Whakapapa Village

The drive from Wellington to Tongariro takes you via the Kapiti Coast and the seaside towns of Plimmerton, Paekakariki and Paraparaumu are worth a short detour. Heading north you pass through the rural towns of Taihape, Mangaweka and Bulls before arriving onto the central plateau. A little further the military town of Waiouru also hosts the Army Museum, an incredible collection of New Zealand's military history and a memorial to its servicemen. Skirting Tongariro National Park, one of New Zealand's three world heritage sites, and clouds permitting you can see the 2,500 metre peak of the still volcanically active Mt. Ruapehu. You might recognise the symmetrical shape of Mt. Ngauruhoe as this was used as the scenery of Mt. Doom in the Lord of the Rings Trilogy.

Tongariro is New Zealand's oldest national park, established in 1887 after the Maori chief Te Heuheu Tukino IV gifted the sacred peaks to the nation. It was also only the fourth place on earth to be given recognition as a World Heritage area. At the heart of the park are three volcanoes, Tongariro, Ruapehu and Ngauruhoe. Ruapehu and Ngauruhoe and Ruapehu are considered the two most active composite volcanoes in the world with the latter erupting as recently as 1995 and 1996 sending ash up to 30, 000 feet into the air.

Despite the barren and sometimes inhospitable environment, the region abounds with flora and fauna. Alpine herbs and flaxes thrive on the upper slopes while dense beech forests cover the lower regions. New Zealand's only native mammals, the short and long tailed bat make their homes here.

The Tongariro Crossing is one of New Zealand's Great Walks and there are many other tracks and trails to suit all capabilities. Also lying within the park is two of New Zealand's largest ski fields, Whakapapa and Turoa.

### Your accommodation: Ruapehu Country Lodge

Ruapehu Country Lodge provides the perfect base from which to explore two of New Zealand's National Parks: Tongariro National Park and Whanganui National Park. Wake up each morning to peace and tranquillity and enjoy a prepared breakfast before starting your day. Each room has an outdoor courtyard which looks across the properties expansive gardens.

Meals included: Breakfast



## Day 18



### Walking tracks in and around Whakapapa Village, Tongariro National Park

There are a plethora of walks in and around Whakapapa Village and Tongariro National Park. From short 15 minute hikes to longer 5 hour treks, there is something for every level of fitness. All established tracks are maintained by the Department of Conservation and before heading out on a walk, it is best to check the track conditions and suitability at the local DOC information office in the centre of the village. Below are a selection of the best walks to do: Whakapapa Nature Walk, 15 min loop track Mounds Walk, 20 min one way Tawhai Falls, 20 min one way Ridge Track, 40 min return Taranaki Falls, 2 hour return Whakapapanui Walk, 2 hour return Tupapakurua Falls Track, 5 hour return

### Your accommodation: Ruapehu Country Lodge

Ruapehu Country Lodge provides the perfect base from which to explore two of New Zealand's National Parks: Tongariro National Park and Whanganui National Park. Wake up each morning to peace and tranquillity and enjoy a prepared breakfast before starting your day. Each room has an outdoor courtyard which looks across the properties expansive gardens.

Meals included: Breakfast





## Day 19



### Whakapapa Village to Waitomo

Head through National Park and across rich rolling farmland to the limestone regions of Waitomo and the famous Waitomo Caves complex.

#### Your accommodation: Abseil Inn

Architecturally designed, the Abseil Inn is situated on a ridge overlooking both the Waitomo Caves Village and the beautiful Waitomo Valley. Sited to maximize both views and rural ambience it offers an authentic slice of rural NZ

Meals included: Breakfast, Dinner



## Day 20



### Private Footwhistle Glowworm Cave Tour with CaveWorld

Your tour begins as you are picked at the Waitomo iSite and enjoy a scenic shuttle to Caveworld's family owned cave, while your guide provides commentary bringing the rich history of Waitomo to life. Here you will take a short walk through the breathtaking New Zealand bush, keeping an eye out for the native birdlife. Heading down to the entrance of the cave you will discover the beauty of the glowworms, learn about the formation of Footwhistle Cave - known to local Maori as Te Anaroa Cave. You are encouraged to bring along your cameras a tripods to freeze the beautiful twinkling lights in time, with dim solar-powered lights through the cave that allow you to appreciate the magnificent displays and get the perfect shot. Complete your intimate tour with a Kawakawa tea as you relax in a ponga hut nestled into the native surrounds.

### Waitomo to Auckland City

The lush farmland of the Waikato and the limestone hills of the Waitomo region provide some great scenery as you head north. Visit the Otorohanga Kiwi House en route for a great look at some of New Zealand's native birds in particular our famous flightless namesake.

#### Your accommodation: Legacy Airedale Hotel

Legacy Airedale Hotel Auckland is located on a landmark site on Queen Street in the heart of Auckland City. This superb art deco style hotel is conveniently located in the city's vibrant cultural, shopping and central business district.

Meals included: Breakfast



## Day 21

### Depart Auckland today

Explore more of vibrant Auckland city before dropping your rental car at the airport depot and continuing your onward journey.

## Tour details

Departures:	Daily
Tour type:	North Island Self Drive
Starts:	Auckland
Finishes:	Auckland
Tour length:	21
Accommodation:	Boutique Lodges & Hotels
Car/transport type:	

---

## Included activities

Includes	1 dinner
Includes	All breakfasts
Includes	Private airport transfers
Includes	Cape Reinga Fly and Drive Tour
Includes	Sail an Americas Cup Yacht
Includes	Te Puia Steambox Interactive Lunch & Cultural Performance
Includes	Napier City Whirlwind Tour
Includes	Twilight Odyssey Progressive Dinner and Winery Tour
Includes	Gannet Safari Tour
Includes	Zealandia Wildlife Sanctuary Night Tour, Wellington

---

## Accommodation summary

Day 1	Legacy Airedale Hotel
Day 2	Legacy Airedale Hotel
Day 3	Arcadia Lodge, Russell
Day 4	Arcadia Lodge, Russell
Day 5	Arcadia Lodge, Russell
Day 6	Woodhouse Mountain Lodge Warkworth
Day 7	Hahei Bed & Breakfast
Day 8	Hahei Bed & Breakfast
Day 9	Pullman Rotorua
Day 10	Pullman Rotorua
Day 11	McHardy Lodge
Day 12	McHardy Lodge
Day 13	The Martinborough Hotel
Day 14	The Martinborough Hotel
Day 15	Bolton Hotel Wellington
Day 16	Bolton Hotel Wellington
Day 17	Ruapehu Country Lodge
Day 18	Ruapehu Country Lodge
Day 19	Abseil Inn
Day 20	Legacy Airedale Hotel