



## Essential Southern Extravaganza

This tour is a celebration of the beautiful places, natural wonders and outstanding lodge retreats that the South Island is home to. In remote and unspoilt locations you'll discover what makes this part of the world so special and why our luxury lodges are so well regarded. With many amazing inclusions from breath-taking hot air balloon flights to glaciers and cruises through the azure blue waters of Abel Tasman National Park, you'll have something to look forward to every day. In the evenings you'll dine and relax at welcoming lodges situated in unique and wondrous locations.



Starts in: Queenstown  
Finishes in: Queenstown  
Length: 21days / 20nights  
Accommodation: Luxury Lodges  
Can be customised: Yes

This itinerary can be customised to suit you perfectly. We can add more days, remove days, change accommodations, mix it up, add activities to suit your interests or simply design and create something from scratch. Call us today to get your custom New Zealand itinerary underway.



### Inclusions:

Includes: Late model rental cars

Includes: Unlimited kms

Included activity: Electronic Travel Guide and In-Country Support App

Included activity: Private Transfer Queenstown Airport to your Accommodation

Included activity: Private Transfer Christchurch Train Station to Accommodation

Included activity: Glacier Explorers

Included activity: Dinner at Camp Estate, Larnach Castle

Included activity: Dinner at Camp Estate, Larnach Castle

Included activity: Cruise Milford Sound on the Milford Adventurer - Picnic Lunch Included

Included activity: Wanaka Boutique Wine Tour with Wanaka Wine Tour

: 20 breakfasts, 3 lunches, 16 dinners, 2 special dinners

Includes: Fully inclusive rental car insurance (excess may apply)

Includes: Afterhours emergency support while touring

Included activity: The Visitor Promise - Cultural Learning Course

Included activity: Seals, Beach Cruise and Walk with Wilsons - Includes Lunch

Included activity: TranzAlpine Scenic Train: Greymouth to Christchurch Scenic Plus with Great Journeys NZ

Included activity: The Panorama Room 3-course Dinner with The Hermitage Hotel

Included activity: Castle to Cruise Tour and Penguin Experience with Monarch

Included activity: Fiordland Lodge

Included activity: Sunrise Balloon Adventures

Included activity: Twin Glacier Scenic Helicopter Flight with The Helicopter Line



## Day 1



### Private Transfer Queenstown Airport to your Accommodation

On arrival you will be met by a private driver and delivered to your Queenstown accommodation.

### Welcome to Queenstown

Renowned for its adrenaline inducing activities Queenstown is synonymous with adventure. Parked on the shores of Lake Wakatipu this small alpine town is nestled below soaring vistas of The Remarkables Mountain Range. While arguably the brightest gem in New Zealand's crown, Queenstown offers far more than an action-packed getaway. Spend time on the Gibbston wine trail and end with a meal at Michelin star chef Josh Emett's restaurant, Rata. Take a trip down memory lane on a 100 year old steamship the TSS Earnslaw. Soak in the scenery on your walk around the lake, or venture further afield into Fiordland National Park. Head over the hill to resort town Wanaka, or re-live scenes from Lord Of The Rings by four wheel drive. But - if you really do want that rush - head out on the Shotover Jet, dive off the Nevis Bungy, freefall on the Canyon swing or Zip line the Gondola. Just be sure it's done on an empty stomach & don't say we didn't warn you!

### Matakauri Lodge

Spectacularly situated on Lake Wakatipu, Matakauri Lodge offers stunning panoramic views of the Remarkables, Cecil and Walter Peak mountain ranges. Just a short seven minute drive for the centre of Queenstown, Matakauri Lodge is a relaxing alpine retreat tucked into one of the world's most beautiful landscapes. The main lodge consists of a spacious lounge, dining and living areas complimented by large open fires. It also has a large patio, library and courtyard - all comfortable spaces to relax in. You can also take a swim in the pool or relax in the Jacuzzi, both offering spectacular views of the lake and mountainside.

### Your accommodation: Rosewood Matakauri Queenstown

Spectacularly situated on Lake Wakatipu, Matakauri Lodge offers stunning views from every angle of the Remarkable, Cecil and Walter Peak mountain ranges. Just seven minutes from Queenstown the lodge provides an alpine lakeside retreat nestled in one of the world's most serenely beautiful landscapes.

Meals included: Dinner



## Day 2



### Sunrise Balloon Adventures

Experience sunrise over the lakes and mountains from the serenity of a hot air balloon. You'll float gently with the breeze, enjoying incredible panoramic views and your flight is followed by a champagne style breakfast at your landing spot. Flights are at dawn when the air is cool and calm and in the right conditions you can expect to see views of Coronet Peak and The Remarkables ski areas, Mount Aspiring in the Southern Alps and Mount Tutoko in Fiordland National Park. You can also see Lake Wakatipu, Lake Hayes, the Shotover and Kawarau rivers. Additionally a bonus for many are the views of some Lord of the Rings scenes such as The Ford Of Bruinen, Dimrill Dale, The Gates of Argonath and The Pillars Of The Kings. Also visible is Mount Earnslaw, one of the great mountains seen in Isengard. The flight is for approximately 1 hour and you will be standing for the duration of the flight.

### Explore Queenstown

Well-known as New Zealand's 'adventure capital', Queenstown is home to a range of adventures, from the world's first and most famous bungy jumps to jet boat thrills, white-water rafting, and skydiving. However, Queenstown offers far more than a fast-paced, action-packed holiday. Settled on the shores of beautiful Lake Wakatipu beneath a soaring panorama of the Remarkables Mountain Range, this alpine town is surrounded by many historic, gastronomic, and scenic wonders. Take a stroll through the beautiful lakefront parks and gardens, browse through market stalls on weekends, dine in wonderful al-fresco restaurants, or ride on the 100-year-old historic Steamship - TSS Earnslaw to Walter Peak Station. Take the Queenstown Gondola up to Bob's Peak and soak up the panoramic views of the magnificent lake and mountain ranges. And after all of that, if you do want the adrenaline rush, Queenstown is known for taking your pick from the Shotover Jet, Canyon Swing, Zipline, Luge, or Heli-hike.



### Your accommodation: Rosewood Matakauri Queenstown

Spectacularly situated on Lake Wakatipu, Matakauri Lodge offers stunning views from every angle of the Remarkable, Cecil and Walter Peak mountain ranges. Just seven minutes from Queenstown the lodge provides an alpine lakeside retreat nestled in one of the world's most serenely beautiful landscapes.

Meals included: Breakfast, Lunch, Dinner



---

## Day 3



### Collect Rental Car

This tour's from price includes an intermediate-sized vehicle, setting you up for comfortable travels. Yet, we understand every adventure is unique! Feel free to select the perfect wheels from our incredible collection of rental cars, spanning from economy hatchbacks to premium SUVs.

### Queenstown to Wanaka

Leaving Queenstown you'll drive over New Zealand's highest sealed road, the Crown Range before arriving into the resort town of Wanaka.

### Your accommodation: Lime Tree Lodge

Set on a ten acre estate just outside Lake Wanaka, Lime Tree Lodge offers luxury boutique accommodation with stunning 360-degree uninterrupted mountain views.

Meals included: Breakfast



---

## Day 4



### Wanaka Wine Tours Boutique Central Otago Wine Trail

This small group wine tour (maximum 8) offers a relaxed and personal introduction to the wines and scenery of the Central Otago region. This tour is a great way to explore award-winning vineyards hidden amongst the rugged landscape of Central Otago. Visit and enjoy tastings at 4 Central Otago vineyards including a delicious mid-afternoon platter to enjoy with your tastings. You'll also discover the history of the region with a visit to Old Cromwell Town, a charming heritage precinct that has been revitalised into a boutique arts and crafts village.

### Your accommodation: Lime Tree Lodge

Set on a ten acre estate just outside Lake Wanaka, Lime Tree Lodge offers luxury boutique accommodation with stunning 360-degree uninterrupted mountain views.

Meals included: Breakfast



## Day 5



### Wanaka to Franz Josef

The route follows the shores of Lakes Wanaka and Hawea before you enter the village of Makarora, the gateway to Mt. Aspiring National Park. The Blue Pools, just outside Makarora, are a wonderful 30-minute walk through pristine native beech forest. Descending into Mt. Aspiring National Park and towards the Haast Pass, crashing rivers and waterfalls are around every corner. Crossing the Haast River you are now truly on the wild West Coast, a 600-kilometre stretch of bush, rainforest, and podocarp forest.

Paringa Salmon Farm is a great halfway stop to stretch your legs, feed the fish, and stop for lunch or refreshment.

First Fox Glacier welcomes you to the glacier region and Franz Josef township is just a further 45 minutes' drive over the impressive Fox Hills.

### Your accommodation: Legacy Te Waonui Hotel Franz Josef

Nestled amongst native West Coast rainforest at Franz Josef is a very special five-star retreat. Designed with utmost care of its precious environment, guests at Te Waonui Forest Retreat will find themselves encircled by rainforest and accommodated in natural and sustainable luxury.

Meals included: Breakfast, Dinner



## Day 6



### Twin Glacier Scenic Helicopter Flight with The Helicopter Line

A spectacular scenic flight soaring over two of New Zealand's most famous glaciers, Fox and Franz Josef. Landing at the head of one and view the incredible sight of this frozen river as it winds its way through ancient carved valleys. It is important to read and understand the risks associated with this activity. A full risk disclosure can be found [here](#).

### Your accommodation: Legacy Te Waonui Hotel Franz Josef

Nestled amongst native West Coast rainforest at Franz Josef is a very special five-star retreat. Designed with utmost care of its precious environment, guests at Te Waonui Forest Retreat will find themselves encircled by rainforest and accommodated in natural and sustainable luxury.

Meals included: Breakfast, Dinner



## Day 7





## Franz Josef to Arthur's Pass National Park

Driving north on State Highway 6 you pass through many small West Coast towns. Hari Hari is the township that Guy Menzies decided to land in (or rather crash land) as he became the first person to fly solo across the Tasman. Ross is the site of an old gold mining town and some of the old buildings remain. You can even pan for gold. The craft and gift stores in Hokitika are excellent with a great range of locally made items and if you want to explore further here then the Hokitika Gorge is worthy of a 50 minute detour.

State Highway 73 is the main road between the West Coast and Christchurch and the scenery is spectacular, even in the rain and there is a pretty good chance of rain in the high alpine mountains. With hundreds of waterfalls cascading down the bush-clad hillsides, it's not a road to be rushed. Originally the road was a pass used by Maori as they made their seasonal passage to look for the greenstone abundant in the West Coast mountains. When the gold rush hit the West Coast in the late 1800's then a road was quickly developed and not soon after the train. Today the main use for the track is transporting coal to Lyttelton Harbour but once a day the now world famous TranzAlpine Scenic Train takes a few hundred tourists and visitors between the two oceans.

The Otira Gorge on the Western side of Arthur's Pass features a remarkable piece of engineering with the road passing high on a viaduct through this large valley. This is a recent addition to the route as the old road was washed away in a rock fall a few years ago. There are numerous lookout points giving great views of the valley and its engineering feat but watch out for the local residents, the kea. this bird is the world's only alpine parrot and can be extremely cheeky.

Arthur's Pass Township is a bustling place in the peak season with many walkers and adventurers using it as a base for the forays into the mountains of Arthur's pass National Park. The Department of Conservation centre here has an excellent display of the local history and is a great source of information for the many short walks in the area.

---

### Your accommodation: Wilderness Lodge, Arthurs Pass

Wilderness Lodge sits on it's own 3,000-hectare nature reserve and merino sheep farm and is surrounded by the mountains of Arthur's Pass National Park. Join nature guides to walk, canoe and discover kea parrots, giant buttercups, pygmy forests, alpine flower gardens and waterfalls.

Meals included: Breakfast, Dinner



---

## Day 8



### Walking tracks in Arthurs Pass National Park

Within Arthur's Pass there are many short walks to suit all ages and abilities. Located in the Arthur's Pass Village is a Department of Conservation information centre where you can get updates on track conditions and track suitability as well as learn about the natural history of the area and its people.

Listed below is a selection of short walks.

1. Millennium Walk - Time: 10 minutes return
2. Devils Punchbowl Waterfall Walk - Time: One hour return
3. Arthur's Pass Walking Track - Time: One hour 20 minutes (one way)
4. Dobson Nature Walk - Time: 30 minutes return
5. Old Coach Road Walk - Time: 30 minutes return
6. Cockayne Nature Walk - Time: 30 minutes return

---

### Your accommodation: Wilderness Lodge, Arthurs Pass

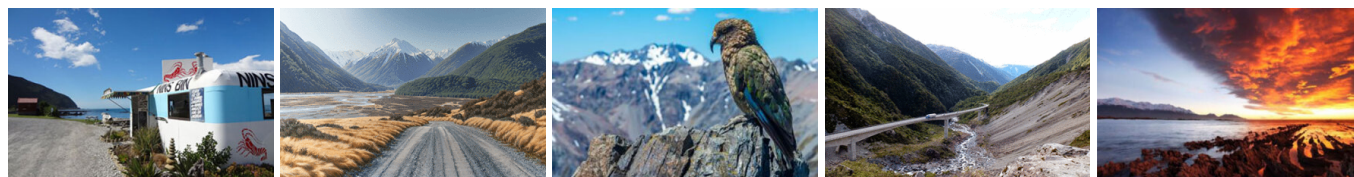
Wilderness Lodge sits on it's own 3,000-hectare nature reserve and merino sheep farm and is surrounded by the mountains of Arthur's Pass National Park. Join nature guides to walk, canoe and discover kea parrots, giant buttercups, pygmy forests, alpine flower gardens and waterfalls.

Meals included: Breakfast, Dinner



---

## Day 9



## Arthur's Pass to Kaikoura

Travelling from the Southern Alps to the Coast, this drive offers spectacular views of braided river valleys. You'll travel through Castle Hill Scenic Reserve, dotted with remarkable rocky outcrops, popular for hiking.

Descending onto the Canterbury Plains, you'll travel through the rich farmland surrounding Christchurch before turning North through the small towns of Rangiora and Oxford. You'll then travel on State Highway 1 through the Waipara Valley. If you have plenty of time be sure to stop at Hanmer Springs for a soak in the hot mineral pools.

The road hugs the coast for the final stretch of this drive, before arriving at your destination, Kaikoura. Keep a lookout for dolphins as they are often seen swimming just off the coastline as well as New Zealand fur seals basking by the roadside.

---

### SUGGESTED ACTIVITY - Ocean's Cabin with Whale Watch Kaikōura

Experience New Zealand's only marine-based whale-watching company. Whale Watch Kaikōura offers a once-in-a-lifetime, up-close encounter with the giant Sperm Whale. You are also likely to encounter New Zealand fur seals, dolphins, and albatross. Depending on the season you may also see Pilot, Blue, and Southern Right whales as well as migrating humpbacks. Often orcas can be spotted here and the world's smallest dolphin, the Hector's, occasionally makes an appearance.

---

### Your accommodation: Hapuku Lodge & Tree Houses

Hapuku Lodge was built to give guests a great night's sleep in one of the most beautiful places in the world. The Lodge sits tight between the mountains and the ocean, on a deer stud and olive farm.

Meals included: Breakfast, Dinner



---

## Day 10



### Kaikoura to Blenheim

Heading north from Kaikoura, the road hugs the shore for approximately 50 kilometres and offers many opportunities to view the native wildlife such as seabirds and New Zealand fur seals. One of the best seal watching locations is Ohau Point (25km north of Kaikoura), where you can observe the adults on the shoreline and the pups frolicking in the waterfall, just a short walk from the road (signposted). As you drive you will have turquoise waters of the South Pacific Ocean to your east and to the west the towering Kaikoura Ranges. Crossing the dry hills of the Marlborough ranges you head towards Marlborough, New Zealand's largest wine producing region. Blenheim sits right at the heart of Marlborough and is ideally located to enjoy an afternoon sampling the local produce. A great way to do this is to take a guided wine tour with Sounds Connection Wine Tours.

---

### Your accommodation: Art Deco Masonic Hotel

The Art Deco Masonic Hotel occupies a significant historic building on Napier's waterfront and has been richly refurbished in keeping with the Art Deco architecture. With its central location and decadent décor, this is the best place to experience what Napier is famous for.

Meals included: Breakfast, Dinner



---

## Day 11





## Blenheim to Abel Tasman National Park via Queen Charlotte Drive

Take a short drive to the small port of Picton where the Interislander ferry connects with Wellington. A bustling seaside destination, Picton is well equipped with shops, cafes and is also the starting point for the famous Queen Charlotte Walk. You'll travel along Queen Charlotte Drive, traversing the length of the Marlborough Sounds coastline. Magnificent views are abundant so be sure to make time to stop and enjoy the scenery as you go.

Continue through the small port town of Havelock, home to a variety of cafes and restaurants. The highway between Nelson and Picton crosses the pelorus river, and at this junction you'll find the famous pelorus bridge. From here there are a number of forest walks, the most popular a 30 minute loop through beech, rimu, and totara forest. Traverse Tasman Bay passing through Motueka to arrive on the outskirts of Abel Tasman National Park.

---

### SUGGESTED ACTIVITY - Half Day Guided Kayaking in the Marlborough Sounds

The half day guided sea kayak trip is an ideal opportunity to fit a little kayaking adventure into a busy holiday itinerary. After a short safety briefing you'll be in the water, allowing you maximum time to enjoy the tranquil waters of the Queen Charlotte Sound. Starting at Ngakuta Bay you then paddle out of the bay and into Grove Arm. The sound is surrounded by bush-clad shorelines and sandy beaches. There will be a short stop to enjoy a light refreshment break along the way before returning to Picton. It is important you read and understand the risks associated with this activity. For more information click [here](#).

---

### Your accommodation: Pihopa Retreat

Relax in style at this historical boutique retreat. Pihopa Retreat encompasses park-like gardens with six premium suites, creating a comfortable home away from home feel for your stay. The Pihopa property has 5.5. acres of peaceful gardens, a heated swimming pool and large spacious areas to create a truly relaxing visit.

Meals included:            Breakfast, Dinner



---

## Day 12



### Seals, Beach Cruise and Walk

Experience the best of Abel Tasman on this combined beach cruise and walk tour. Cruise into the Tonga Island Marine Reserve and pause to watch the antics of the Resident Fur Seal Colony. After landing at the historic Tonga Quarry Beach, take a two hour, fifteen minute walk over forested land and around the spectacular Bark Bay Estuary, renowned for its cascading waterfalls. Rejoin the cruise at the sheltered golden cove on Medlands Beach.

---

### Your accommodation: Pihopa Retreat

Relax in style at this historical boutique retreat. Pihopa Retreat encompasses park-like gardens with six premium suites, creating a comfortable home away from home feel for your stay. The Pihopa property has 5.5. acres of peaceful gardens, a heated swimming pool and large spacious areas to create a truly relaxing visit.

Meals included:            Breakfast, Lunch, Dinner



---

## Day 13



## Marahau to Punakaiki

The drive today takes you along the Buller Gorge and offers some wonderful scenery as you follow this magnificent river. The town of Murchison is a quiet place and a great lunch stop. Underneath its sleepy farming facade is an adventurers' paradise with white water rafting, kayaking, 4WD trips, and some great trout fishing.

The first major town (by this region's standard) is Inangahua, and a small museum tells of the earthquake that hit the region in 1968, leaving 70% of the buildings damaged or inhabitable. Further along the river, one of the must-visit places is Whites Creek and New Zealand's longest swing bridge. Crossing the river, you get magnificent views of the gorge, and once on the other side, there are short bush walks, jet boat rides, and some of the historic gold mining remnants.

The port town of Westport is the largest on the Northern West Coast. A history of gold mining, logging, fishing coal mining gives the town a hard-working feeling. And to reward the hard workers the town has an extraordinary amount of pubs.

There are plenty of activities here, such as caving, bush walks, and surfing, but one of the most popular is to take a trip to Tauranga Bay and the seal colony. Just 15 kilometres south at Cape Foulwind (named by Captain Cook for the difficult sailing conditions and not the smell of the seals!), you will find a breeding colony of New Zealand fur seals. A well-marked and easy 10-minute walking track takes you to the colony where you can see the creatures lazing around or swimming in the ocean.

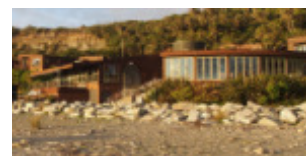
The spectacular West Coast coastline guides you to Paparoa National Park and to Punakaiki where a walk along the paths around the pancake rocks is a must. Please note there is no supermarket facilities in Punakaiki.

---

### Your accommodation: Scenic Hotel Punakaiki

Scenic Hotel Punakaiki is a modern, award-winning hotel complex, architecturally designed to harmonious with the local environment. Nestled in the foothills of Paparoa National Park the resort has spectacular views of the Wild West Coast beaches while all rooms have rainforest and/or ocean views.

Meals included: Breakfast, Dinner



---

## Day 14



### Punakaiki to Greymouth

You have plenty of time to explore Punakaiki this morning and to enjoy the scenic drive back along the coast to Greymouth to catch the TranzAlpine Scenic Train to Christchurch. Just south of the town of Greymouth is Shantytown a replica gold rush town with lots of great displays from yesteryear and a great place to spend a few hours. Drop your rental car at the Greymouth Train Station depot located inside the train station building before checking in for your train journey.

---

### TranzAlpine Scenic Train: Greymouth to Christchurch Scenic Plus with Great Journeys NZ

Great Journeys New Zealand's Scenic Plus carriage provides comfort and vast panoramic views, making our TranzAlpine scenic train journey the perfect way to explore coast-to-coast through the 'Great Divide' and the indomitable spine of mountains that partitions New Zealand's South Island. Scenic Plus offers an all-inclusive experience on the unique TranzAlpine scenic rail journey to invigorate all the senses! Feast your eyes on epic scenery while you savour regionally inspired cuisine paired with sumptuous wine and beer all from the comfort of your luxurious seat – a hosted dining experience like no other. Quite simply, we have done everything we can to ensure you feel at peace as you sink back in your seat and soak up the scenery.

---

### Private Transfer Christchurch Train Station to Accommodation

On arrival at the Christchurch train station, you will be met by a private driver and transferred to your accommodation.

---

### Your accommodation: The George Hotel

The George is the essence of supreme comfort. The award-winning 5 star hotel is opposite Hagley Park and just a few minutes stroll from the Botanic Gardens. It also has an award-winning restaurant, 50 Bistro onsite.

Meals included: Breakfast, Dinner





## Day 15



### Collect Rental Car

This tour's from price includes an intermediate-sized vehicle, setting you up for comfortable travels. Yet, we understand every adventure is unique! Feel free to select the perfect wheels from our incredible collection of rental cars, spanning from economy hatchbacks to premium SUVs.

### Christchurch to Aoraki-Mt Cook National Park

Drive through the heart of the South Island, crossing the vast Canterbury plains. Catch your breath in Geraldine before continuing through Fairlie. Ascending Burkes pass you'll come to the picturesque town of Lake Tekapo. Follow the road and take in the view of Aoraki-Mt Cook (New Zealand's tallest mountain) from the shores of Lake Pukaki, known for its glacier fed turquoise blue colour. Continue along the lake to your final destination Aoraki-Mt Cook Village.

### Glacier Explorers

Experience 500-year-old icebergs up close on the Aoraki-Mt Cook terminal lake. The Glacier Explorers tour is the only one of its kind in New Zealand and one of only three in the world! Very few glaciers terminate into lakes and even fewer of them are accessible. See towering ice cliffs and floating icebergs from the safety of a specially designed boat. These boats provide a safe way to view unseen and inaccessible areas of New Zealand's largest glacier The Tasman.

### The Panorama Room 3-course Dinner with The Hermitage Hotel

Since first opening its doors in 1969, The Panorama Room has gained a reputation as being one of the best restaurants in New Zealand. This reputation is reflected in the numerous awards the restaurant has received over the years. A simple philosophy of using just the freshest, local ingredients, in particular from New Zealand's South Island, is still the secret to its success today. The menu has a strong international influence and reflects both the establishment's taste and the fact that most of the chefs have travelled and worked widely throughout the world.

### Your accommodation: Hermitage Hotel, Aoraki Wing Premium Plus

Experience the best views in the park from the spacious top floor rooms of the magnificent Hermitage Hotel.

Meals included: Breakfast, Dinner



## Day 16



### Aoraki Mt Cook National Park to Dunedin

Leave Aoraki Mt Cook National Park and travel past Twizel, one of the locations for the Lord of the Rings films. Go through Omarama, the gliding capital of New Zealand. Continue down the Waitaki Valley follow the hydro power generating system to the rural town of Kurow, home to the divine Valli Wines. Stop for a sip or continue on to the east coast. Stretch your legs in Oamaru, known for its white stone buildings constructed with the local Oamaru Stone and Steampunk influence. If you were a little late off the mark this morning you may get the chance to see the blue penguins come ashore at dusk. Continue south down the coast to Moeraki, and take a detour towards the beach to see the Moeraki Boulders, a unique geological feature well worth a look. As you arrive in Dunedin, take in the city's Edwardian and Scottish heritage reflected in the buildings around the city centre The Octagon.

### Dinner at Camp Estate, Larnach Castle

Keeping with the historical setting of Larnach Castle, a four-course dinner is offered in a grand Castle Dining Room. This is a trust-the-chef experience where you may indulge in incredible meals and meet other guests. The menu reflects local meats and vegetables, served in a traditional New Zealand-style cuisine with the opportunity to pair with regional wines.

## Your accommodation: Camp Estate at Larnach Castle

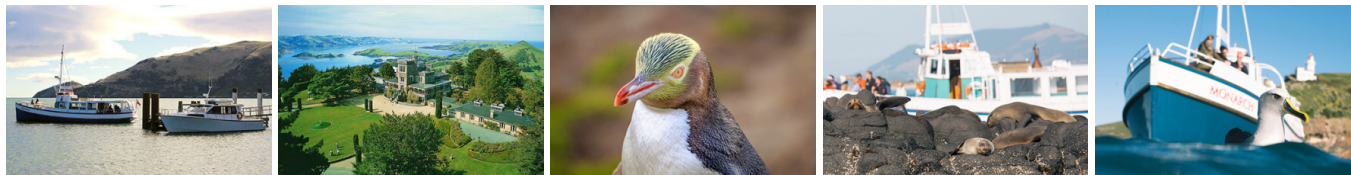
A luxurious country house built from blue stone and features a spectacular marble staircase. The modern rooms are all double glazed and the reception rooms are all heated by open fires and underfloor heating. Staying at Camp Estate includes entry to Larnach Castle and the grounds.

Meals included: Breakfast, Speciality Dinner



---

## Day 17



### Castle to Cruise Tour and Penguin Experience with Monarch

Today you'll explore the wildlife and history of the Otago Peninsula. You'll be welcomed to the MV Monarch for a wildlife cruise around Taiaroa Head, home to the world's only mainland nesting site for royal albatross. Scattered along the rocks you'll also see fur seals basking in the sun and possibly sea lions on the beach. In the water, you may also see penguins, dolphins, and other marine birds. Back on land, you'll take a guided tour of New Zealand's only castle, Larnach Castle built in 1871. Learn of the scandals and history of the castle and explore the beautiful garden of international significance. Your final stop of the day is to The Otago Peninsula Eco Restoration Alliance (formerly Penguin Place), a natural nesting site for the rarest penguin in the world, the Yellow Eyed Penguin.

---

### Dinner at Camp Estate, Larnach Castle

Keeping with the historical setting of Larnach Castle, a four-course dinner is offered in a grand Castle Dining Room. This is a trust-the-chef experience where you may indulge in incredible meals and meet other guests. The menu reflects local meats and vegetables, served in a traditional New Zealand-style cuisine with the opportunity to pair with regional wines.

---

## Your accommodation: Camp Estate at Larnach Castle

A luxurious country house built from blue stone and features a spectacular marble staircase. The modern rooms are all double glazed and the reception rooms are all heated by open fires and underfloor heating. Staying at Camp Estate includes entry to Larnach Castle and the grounds.

Meals included: Breakfast, Speciality Dinner



---

## Day 18



### Dunedin to Kaka Point (The Catlins)

The journey between Dunedin and Invercargill travelling via The Catlins is one that should not be rushed. Taking the eastern half of the Southern Scenic Route the road offers some great Southland and coastal scenery and some fantastic walking opportunities. Kaka Point is located on Molyneux Bay. Nugget Point, just a short drive along the coast road offers spectacular Southern Ocean views with fur seals and sea lions basking on rocks, while Cannibal Bay, just a few kilometers from the main road is a great place to walk the secluded beach and to look for hooker sea lions. There are countless opportunities for short walks to interesting places and all are well signposted.



## Catlins (Kaka Pt) to Te Anau

The drive to Te Anau takes you along the beautiful Southern Scenic Route. First stop along the way is the township of Owaka which hosts a museum telling the history of the region while just a short detour from the main road and an easy 20-minute walk will deliver you to the Purakaunui Falls, a popular photo stop. Curio Bay (well signposted from the main road) is home to one of the world's most extensive and best-preserved examples of a Jurassic fossilised forest (best viewed at low tide). There is also a small population of the rare and endangered yellow eyed penguins here and occasionally the rare hectors dolphins can also be spotted. Take your time on this drive to explore the many bays, beaches and wonderful scenery. Continue along to Invercargill, the capital city of the Southland Region. The drive from Invercargill to Te Anau passes through some wonderful and often overlooked regions of Southland. Riverton is Southland's oldest community established by whalers in the 1830's and many of the original cottages have survived throughout the town. The Riverton Early Settlers Museum tells the story well. Orepuki on the coast was once 'almost' a gold town but the fine dust proved too hard to extract commercially. You can still sometimes see gold dust in the beach sand at Monkey Bay. The early sawmilling settlement of Tautapere is next, known as the 'hole in the bush' the town features an attractive domain. A little further north is the Clifden suspension bridge which dates back to 1899. The Blackmount Road offers some great side trips if you have the time and one, in particular, is the 50-kilometre round trip to Lake Haruoko, New Zealand's deepest lake. The Blackmount Road continues to the small township Te Anau which is the gateway to Fiordland National Park.

---

### Fiordland Lodge

Set on a superb site with commanding views out across Lake Te Anau this is a rural setting with rolling grass lands surrounding the Lodge, Lake Te Anau being a mere ten-minute walk away. Across the lake to the west lie the mountains of Fiordland National Park, an area of over three million acres of untouched wilderness and part of the much larger South West New Zealand World Heritage Area. The enjoyment of food and wine is integral to the experience on offer at Fiordland Lodge and the use of quality ingredients being seasonal and regional and largely organic are fundamental to their cuisine philosophy. Food is a focal point and you'll be hard pressed to find something on the menu that isn't homemade or locally grown. Fresh organic vegetables, greens, herbs and eggs are harvested daily from the huge onsite vegetable garden, so each season nature offers a new palette for the kitchen team to create dishes. A changing evening menu also means that you get to experience as much of New Zealand's wonderful food as possible. There are numerous activities available from Fiordland Lodge such as guided fly fishing and nature walks also the conservation gold sponsor experience where you will join a local volunteer to work on a conservation project for the day.

---

### Your accommodation: Fiordland Lodge

Set in a World Heritage area Fiordland Lodge offers the discerning traveller comfort and privacy. The elegance and splendour of the Lodge is mirrored in the breathtaking views of Lake Te Anau and Fiordland. Private and serene, the Lodge is perfect for relaxation, or as a base for your Fiordland experience.

Meals included: Breakfast, Dinner



## Day 19



### Te Anau to Milford Sound, returning to Te Anau

The magnificent Milford Road leading to Milford Sound offers some of the most beautiful and iconic scenery in the country. Countless photo opportunities mean this drive should not be rushed. From crystal clear lakes and towering mountains to lush glacier-formed meadows, this area is abundant with picture-perfect scenes. Continue on through the Homer Tunnel, an engineering marvel at 1219 meters long. Arriving in the village of Milford, you will be greeted with an amazing view of Mitre Peak. A day cruise into the heart of the sound is not to be missed. You'll learn about how this magnificent area was formed and experience the wonder of the falls that line the Fjord before back-tracking the way you came.

---

### Cruise Milford Sound on the Milford Adventurer includes Picnic Lunch

Escape the crowds and experience the magnificence of Milford Sound on board the Milford Adventurer. This intimate cruise with a maximum of just 70 passengers means you'll get the best vantage point for the many waterfalls and amazing wildlife that visit the fiord, including the resident fur seals. The smaller vessel size means the Milford Adventurer can get closer to waterfalls and wildlife and your captain will share their local knowledge of Fiordland, Milford Sound and the flora and fauna. On board you can enjoy the complimentary coffee, tea and biscuits and lunch can also be ordered in advance.

---

### Your accommodation: Fiordland Lodge

Set in a World Heritage area Fiordland Lodge offers the discerning traveller comfort and privacy. The elegance and splendour of the Lodge is mirrored in the breathtaking views of Lake Te Anau and Fiordland. Private and serene, the Lodge is perfect for relaxation, or as a base for your Fiordland experience.

Meals included: Breakfast, Lunch, Dinner



## Day 20



### Te Anau to Queenstown

Journey across expansive tussock lands en route to Queenstown. Pass through Mossburn, renowned as the deer capital of New Zealand, and continue through the picturesque Southland countryside. As the road begins to trace the edge of Lake Wakatipu, marvel at the breathtaking views from the Devil's Staircase. Finally, approach Queenstown, the adventure capital of New Zealand, with the Remarkables mountain range standing majestically in the backdrop.

---

### Your accommodation: Rosewood Matakauri Queenstown

Spectacularly situated on Lake Wakatipu, Matakauri Lodge offers stunning views from every angle of the Remarkable, Cecil and Walter Peak mountain ranges. Just seven minutes from Queenstown the lodge provides an alpine lakeside retreat nestled in one of the world's most serenely beautiful landscapes.

Meals included: Breakfast, Dinner



---

## Day 21



### Depart Queenstown today

Drop your rental car at the Queenstown airport today.

---

### Farewell from Aotearoa-New Zealand

Bid farewell to Aotearoa-New Zealand, taking with you unforgettable memories of its breathtaking landscapes and incredible adventures. In Maori, it is said mā te wā, which is not goodbye, it is see you soon!

---



## Tour details

Departures:	Daily
Tour type:	South Island Self Drive
Starts:	Queenstown
Finishes:	Queenstown
Tour length:	21
Accommodation:	Luxury Lodges
Car/transport type:	

---

## Included activities

Includes	10 dinners
Includes	All breakfasts
Includes	TranzAlpine Train from Christchurch to Greymouth
Includes	Abel Tasman Seals and Beach walk
Includes	Glacier Explorers Tour, Mt Cook National Park
Includes	Otago Peninsula Wildlife Premier tour including Larnach Castle
Includes	Ultimate Paradise Picnic Scenic Helicopter Flight, Queenstown
Includes	Boutique Half Day Wanaka Wine Tour
Includes	Real Journeys Milford Sound Cruise
Includes	Twin Glaciers Scenic Helicopter Flight, Franz Josef
Includes	Entry to Glacier Hot Pools
Includes	Dinner at Fiordland Lodge

---

## Accommodation summary

Day 1	Rosewood Matakauri Queenstown
Day 2	Rosewood Matakauri Queenstown
Day 3	Lime Tree Lodge
Day 4	Lime Tree Lodge
Day 5	Legacy Te Waonui Hotel Franz Josef
Day 6	Legacy Te Waonui Hotel Franz Josef
Day 7	Wilderness Lodge, Arthurs Pass
Day 8	Wilderness Lodge, Arthurs Pass
Day 9	Hapuku Lodge & Tree Houses
Day 10	Art Deco Masonic Hotel
Day 11	Pihopa Retreat
Day 12	Pihopa Retreat
Day 13	Scenic Hotel Punakaiki
Day 14	The George Hotel
Day 15	Hermitage Hotel, Aoraki Wing Premium Plus
Day 16	Camp Estate at Larnach Castle
Day 17	Camp Estate at Larnach Castle
Day 18	Fiordland Lodge
Day 19	Fiordland Lodge
Day 20	Rosewood Matakauri Queenstown