



Southern Wonders to Northern Horizons

A 21 day tour visiting the major attractions of both the North and South Islands, with a whole range of exciting activities included. In the south, you'll jet boat on the Dart River, helihome on the glaciers and take the marvellous TranzAlpine scenic train from the West Coast to Christchurch. In the North Island there's culture to be experienced at Te Puia and fun to be found at Hobbiton Village. With great self-contained accommodation included you can bring the whole family on this adventure.

Starts in: Queenstown
Finishes in: Auckland
Length: 21days / 20nights
Accommodation: Motels
Can be customised: Yes

This itinerary can be customised to suit you perfectly. We can add more days, remove days, change accommodations, mix it up, add activities to suit your interests or simply design and create something from scratch. Call us today to get your custom New Zealand itinerary underway.



Inclusions:

Includes: Late model rental cars

Includes: Unlimited kms

Included activity: The Visitor Promise - Cultural Learning Course

Included activity: Private Transfer Queenstown Airport to your Accommodation

Included activity: Interislander Ferry Picton to Wellington

Included activity: Te Ra Daytime Experience at Te Puia

Included activity: Hobbiton Movie Set Tour from Shires Rest

Included activity: Cape Reinga & Ninety Mile Beach Full Day Tour with Fullers Bay of Islands - Lunch Included

Included activity: Private Transfer - Blue Bubble - Queenstown Accommodation to Airport

Included activity: Stargazing Land Tour with Adventure Wanaka

Included activity: Alpine Vista Heli Flight and Alpine Landing with The Helicopter Line

Included activity: Half Day Marlborough Wine Tour with Sounds Connection

Includes: Fully inclusive rental car insurance (excess may apply)

Includes: Afterhours emergency support while touring

Included activity: Electronic Travel Guide and In-Country Support App

Included activity: Beaches, Bays and Seals Guided Sea Kayaking Trip with Wilsons - Lunch Included

Included activity: Zealandia by Night Wildlife Sanctuary Tour

Included activity: Original Ziplining Experience with Rotorua Canopy Tours

Included activity: Hole in the Rock Cruise with Fullers GreatSights

Included activity: Wilderness Jet Experience with Dart River Safaris

Included activity: Easy Bike Tour with Discover Wanaka

Included activity: Glacier Explorers

Included activity: Ocean's Cabin with Whale Watch Kaikōura

: Meals included: 2 lunches

Day 1



Private Transfer Queenstown Airport to your Accommodation

On arrival you will be met by a private driver and delivered to your Queenstown accommodation.

Welcome to Queenstown

Renowned for its adrenaline inducing activities Queenstown is synonymous with adventure. Parked on the shores of Lake Wakatipu this small alpine town is nestled below soaring vistas of The Remarkables Mountain Range. While arguably the brightest gem in New Zealand's crown, Queenstown offers far more than an action-packed getaway. Spend time on the Gibbston wine trail and end with a meal at Michelin star chef Josh Emett's restaurant, Rata. Take a trip down memory lane on a 100 year old steamship the TSS Earnslaw. Soak in the scenery on your walk around the lake, or venture further afield into Fiordland National Park. Head over the hill to resort town Wanaka, or re-live scenes from Lord Of The Rings by four wheel drive. But - if you really do want that rush - head out on the Shotover Jet, dive off the Nevis Bungy, freefall on the Canyon swing or Zip line the Gondola. Just be sure it's done on an empty stomach & don't say we didn't warn you!

SUGGESTED ACTIVITY - Shotover Jet Canyon Jet Boat Ride

Shotover Jet is the only company permitted to operate in the Shotover River Canyons. It's a thrilling ride! Skim past rocky outcrops at close range in your Shotover Jet 'Big Red', as you twist and turn through the narrow canyons at breathtaking speeds. And a major highlight - hold tight for the world-famous Shotover Jet full 360-degree spins! It is important you read and understand the risks associated with this activity. For more information please see [here](#).

SUGGESTED ACTIVITY - TSS Earnslaw Cruise and Walter Peak Gourmet BBQ Dinner

Enjoy a quintessential Kiwi experience, a delicious gourmet BBQ buffet meal, and a farm demonstration in a stunning lakeside setting. Take in the stunning views of Lake Wakatipu and its surroundings as you cruise across the lake to the historic Walter Peak high country farm aboard the TSS Earnslaw Steamship. Enjoy the ambiance of the heart of the stately homestead while your Colonel's Homestead Restaurant chef prepares a gourmet BBQ dinner. Your seasonal menu includes an extensive selection of local New Zealand produce, including succulent meats and a selection of delicious vegetables and salads. Complete your meal with your choice of delicious desserts, or New Zealand cheeses. After dinner, watch the farm dogs in action with a sheep-herding demonstration and say hello to the other farm animals. Finally, cruise home under the southern stars and enjoy the fresh night air as the lights of Queenstown draw ever closer.

Your accommodation: Scenic Suites Queenstown

Scenic Suites Queenstown offers guests exquisite style and comfort, with a selection of rooms having spectacular views over Lake Wakatipu and the Southern Alps. The hotel prides itself on its 4-star hospitality that will make your stay in Queenstown even more memorable.



Day 2



Wilderness Jet Experience with Dart River Safaris

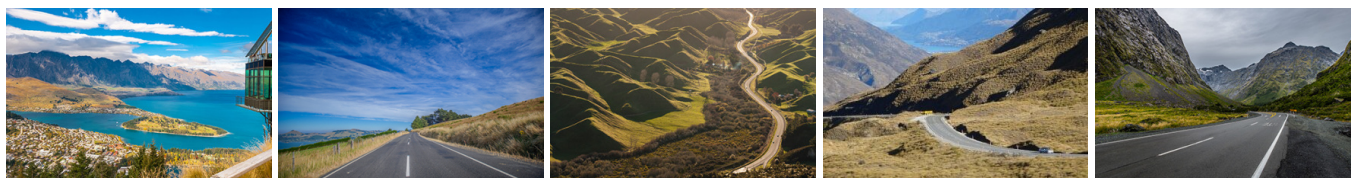
Journey deep into the heart of the world-renowned Mt Aspiring National Park, where myth, heritage, and fantasy come to life. As one of Queenstown's most exhilarating activities, the Wilderness Jet adventures on a spectacular journey deep into the heart of the world-renowned Mount Aspiring National Park. It is important you read and understand the risks associated with this activity. For more information please see [here](#).

Your accommodation: Scenic Suites Queenstown

Scenic Suites Queenstown offers guests exquisite style and comfort, with a selection of rooms having spectacular views over Lake Wakatipu and the Southern Alps. The hotel prides itself on its 4-star hospitality that will make your stay in Queenstown even more memorable.



Day 3



Taxi Transfer from Queenstown Accommodation to Airport

Collect Rental Car

This tour's from price includes an intermediate-sized vehicle, setting you up for comfortable travels. Yet, we understand every adventure is unique! Feel free to select the perfect wheels from our incredible collection of rental cars, spanning from economy hatchbacks to premium SUVs.

Car Instructions

On collection of your rental car, you will be required to sign a rental agreement and provide a credit card for a security bond authorisation. Remember, the bond is only authorised, not charged, at this stage. While your rental rate may include coverage for mechanical breakdowns (please verify your specific car inclusions), you may also have the option to purchase roadside assistance for non-mechanical issues. All drivers must present a physical credit card, valid driving license and passport to be added to the agreement, with potential additional charges for extra drivers. Debit cards may be used on select vehicles. If you are presenting an international drivers license, this must be accompanied by the original domestic license. Drivers under 21 are not permitted, and those aged 21-24 may face a surcharge, both payable directly to the rental company. For detailed information, please refer to your rental car inclusions. See this important information if you are traveling between the North and South Islands on the ferry

Queenstown to Wanaka

Leaving Queenstown you'll drive over New Zealand's highest sealed road, the Crown Range before arriving into the resort town of Wanaka.

SUGGESTED ACTIVITY - Wanaka Wine Tours Boutique Central Otago Wine Trail

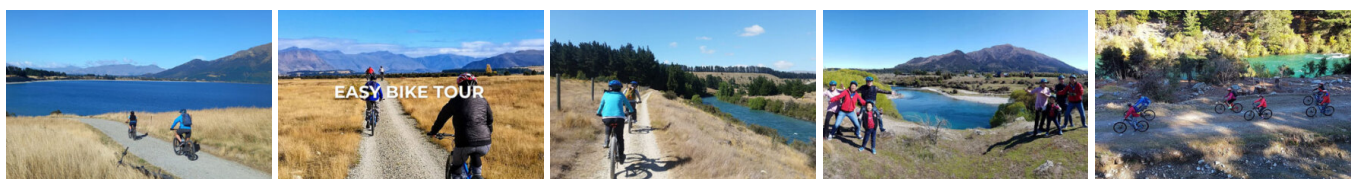
This small group wine tour (maximum 8) offers a relaxed and personal introduction to the wines and scenery of the Central Otago region. This tour is a great way to explore award-winning vineyards hidden amongst the rugged landscape of Central Otago. Visit and enjoy tastings at 4 Central Otago vineyards including a delicious mid-afternoon platter to enjoy with your tastings. You'll also discover the history of the region with a visit to Old Cromwell Town, a charming heritage precinct that has been revitalised into a boutique arts and crafts village.

Your accommodation: The Moorings Wanaka

The Moorings Apartments are just 5 minutes' from Wanaka's town centre and offer lakeside accommodation with open views of the mountains and stunning Lake Wanaka. It's an easy walk to the bustling main street of Wanaka or take a stroll around the lake.



Day 4



Easy Bike Tour with Discover Wanaka

Our professional Wanaka bike guides take the hassle out of organising a family bike tour. We provide all the equipment, including bikes and helmets for both adults and children. The tour follows one of Wanaka's well-known rivers, offering plenty to see and do. You'll pass by a standing wave, where you can often spot people kayaking or river surfing. The crystal-clear water reveals our local trout population, and the tour concludes with a spectacular crossing of a swing bridge spanning the river. This easy family bike tour takes you along a wide, well-maintained trail. Suitable for ages 7 to 70, the one-way route is mostly downhill with a gentle gradient.

Stargazing Land Tour with Adventure Wanaka

Experience the thrill of exploring the cosmos with Adventure Wanaka. Situated atop the NASA launch pad at Wanaka Airport, our 360-degree panoramic site offers unparalleled views of the night sky. Using advanced binoculars and digital telescope technology, we unveil the deep and bright wonders of the universe. From distant galaxies to sparkling star clusters, our expert guides lead you on an unforgettable journey through the cosmos, revealing the secrets of the night sky in stunning detail. Join us for an exhilarating stargazing adventure that will leave you in awe of the vastness and beauty of the universe.

Your accommodation: The Moorings Wanaka

The Moorings Apartments are just 5 minutes' from Wanaka's town centre and offer lakeside accommodation with open views of the mountains and stunning Lake Wanaka. It's an easy walk to the bustling main street of Wanaka or take a stroll around the lake.



Day 5



Wanaka to Aoraki Mt Cook National Park

Passing through the Clutha River valley you arrive into the quaint village of Tarras, which has a number of boutique stores and a lovely cafe. You then traverse the Lindis Pass, one of New Zealand's highest roads with the summit reaching 971 metres. The tussock covered hills offer an unusual contrast as you pass from Central Otago into the Mackenzie Basin. The towns of Omarama and Twizel are the last stops before you arrive at Lake Pukaki and take the Mt Cook Highway along the shores to the village. In Aoraki Mt Cook Village a myriad of activities are available from scenic flights with glacier landings, to kayaking on a glacial lake and a host of walks to suit all abilities. At The Hermitage Hotel the Sir Edmund Hillary Alpine Centre is a must see.

Glacier Explorers

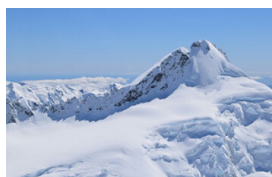
Experience 500-year-old icebergs up close on the Aoraki-Mt Cook terminal lake. The Glacier Explorers tour is the only one of its kind in New Zealand and one of only three in the world! Very few glaciers terminate into lakes and even fewer of them are accessible. See towering ice cliffs and floating icebergs from the safety of a specially designed boat. These boats provide a safe way to view unseen and inaccessible areas of New Zealand's largest glacier The Tasman.

Your accommodation: Mt Cook Motel

Mt Cook Motel, nestled in the heart of Mt. Cook Village, offers spacious self-contained units that provide comfort and convenience. Each unit is surrounded by breathtaking alpine mountain views, making it the perfect retreat for nature lovers and adventurers alike.



Day 6



Alpine Vista Heli Flight and Alpine Landing with The Helicopter Line

This short scenic option is the ideal opportunity to touch snow and experience the thrill of a helicopter flight. Sweep through the rugged high-country landscape of the Ben Ohau Mountain Range to a landing site on a snow field high in the mountains. Enjoy the fantastic vista from this alpine setting as you look out to the mountains and glaciers and down into the valleys that were carved out by glaciers centuries ago. Should weather not be suitable to take this flight you are able to transfer your booking onto a similar tour on any of the Helicopter Line's operations in Queenstown or Mt Cook. It is important to read and understand the risks associated with this activity. A full risk disclosure can be found [here](#).

Walking Tracks in Aoraki-Mt Cook National Park

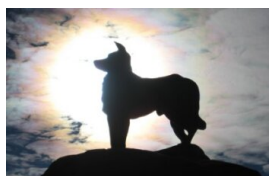
Aoraki-Mt Cook Village offers a variety of short scenic walks suitable for all ages and fitness levels. Start your adventure at the Department of Conservation Information Centre, where you can learn about track conditions, local history, and the area's wildlife. Here are a few popular walks to explore: Bowen Bush Walk: 10-minute return Glencoe Walk: 10-minute return Red Tarns Track: 2-hour return Kea Point Walk: 2-hour return Sealy Tarns Track: 3 - 4 hours return Please be aware that at Aoraki/Mount Cook, you will need to pay for parking at the White Horse Hill car park. The cost is \$5 per hour or \$25 for the full day. A 20-minute free period is available for quick drop-offs.

Your accommodation: Mt Cook Motel

Mt Cook Motel, nestled in the heart of Mt. Cook Village, offers spacious self-contained units that provide comfort and convenience. Each unit is surrounded by breathtaking alpine mountain views, making it the perfect retreat for nature lovers and adventurers alike.



Day 7



Aoraki/Mt Cook National Park to Christchurch

Leaving Aoraki Mt Cook National Park, travel a short distance for a stop at the visitor centre on the southern shores of Lake Pukaki. Learn about the formation of the region and take in the spectacular views of Aoraki-Mount Cook. Along the way, you'll reach Lake Tekapo which also displays the same reflective qualities as Lake Pukaki, making the waters bright turquoise. It's a great place to take a scenic flight, soak in a hot spring or just marvel at the magnificent views. From here you travel through Burkes Pass and into the rich farming valley that surrounds Geraldine. Continue across the vast Canterbury Plains to Christchurch.

Christchurch Botanic Gardens - suggested activity

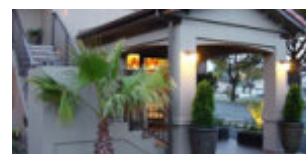
Located just 15 minutes from the city center, Christchurch's 75-acre Botanic Gardens boast the finest collection of exotic and indigenous plants in New Zealand. This impressive collection creates a tranquil oasis, with spring daffodils, stunning summer roses and herbaceous borders, vibrant autumn foliage, and cozy conservatories to warm up in during winter. There's something to enjoy in every season. The New Zealand Garden also offers a unique glimpse into the country's wilderness, providing a peaceful escape throughout the year.

SUGGESTED ACTIVITY - Christchurch Triple Pass - Tram, Punting and Gondola

Experience three of Christchurch's iconic attractions in one day: the Christchurch Tram, Christchurch Gondola, and Punting on the Avon River. The historic tram is a delightful way to explore the evolving inner city, taking in the various sights with the hop-on hop-off pass and learning about the city from the live commentary. You'll also enjoy a bird's eye view of Christchurch and the Canterbury region including the distant peaks of the Southern Alps when you ride the gondola cableway to the top of the Port Hills in Heathcote Valley. Punting on the Avon River takes you through the city's green belt: a relaxing way to explore what is affectionately known as the 'Garden City'.

Your accommodation: Terra Vive Luxury Suites and Apartments

Terra Vive Luxury Suites and Apartments offer luxury accommodation in the heart of Christchurch City. Situated within the beautiful tree-lined street of Bealey Avenue, Terra Vive is ideally located in close proximity to the shops, restaurants and cafes.



Day 8



Christchurch to Kaikoura

The drive north from Christchurch to Kaikoura takes you through the rolling hills of North Canterbury's major wine region, the Waipara Valley. Allow time for a detour and visit Hanmer Springs for a dip in the mineral hot pools. Continue on and cross the Hawkswood Range before descending to the spectacular Kaikoura coastline - where the road hugs the ocean for the last leg of the drive.

Ocean's Cabin with Whale Watch Kaikōura

Experience New Zealand's only marine-based whale-watching company. Whale Watch Kaikōura offers a once-in-a-lifetime, up-close encounter with the giant Sperm Whale. You are also likely to encounter New Zealand fur seals, dolphins, and albatross. Depending on the season you may also see Pilot, Blue, and Southern Right whales as well as migrating humpbacks. Often orcas can be spotted here and the world's smallest dolphin, the Hector's, occasionally makes an appearance.

Your accommodation: The White Morph, Kaikōura

Set on the Esplanade in Kaikōura, The White Morph enjoys commanding views of the ocean and mountains. Just a 10-minute walk into town, The White Morph has been beautifully placed so that you can take in the spectacular scenery of Kaikoura while enjoying the variety of attractions on offer.



Day 9



Kaikoura to Blenheim

Heading north from Kaikoura, the road hugs the shore for approximately 50 kilometres and offers many opportunities to view the native wildlife such as seabirds and New Zealand fur seals. One of the best seal watching locations is Ohau Point (25km north of Kaikoura), where you can observe the adults on the shoreline and the pups frolicking in the water, just a short walk from the road (signposted). As you drive you will have turquoise waters of the South Pacific Ocean to your east and to the west the towering Kaikoura Ranges. Crossing the dry hills of the Marlborough ranges you head towards Marlborough, New Zealand's largest wine producing region. Blenheim sits right at the heart of Marlborough and is ideally located to enjoy an afternoon sampling the local produce. A great way to do this is to take a guided wine tour with Sounds Connection Wine Tours.

Half Day Marlborough Wine Tour with Sounds Connection

An afternoon among the vines! Be immersed in the Marlborough wine country with the Sounds Connection half day wine tour. Get collected from your accommodation and taken through three or four hand-picked wineries to taste the award-winning produce this region is known for. Hear about the history of winemaking in Marlborough as well as learning the unique processes each winery goes through.

Your accommodation: Blenheim Palms Motel

Located 100 m from the central shops and eateries, the Blenheim Palms Motel offers tasteful individually designed apartment-styled rooms.



Day 10



Blenheim to Abel Tasman National Park via Queen Charlotte Drive

Take a short drive to the small port of Picton where the Interislander ferry connects with Wellington. A bustling seaside destination, Picton is well equipped with shops, cafes and is also the starting point for the famous Queen Charlotte Walk. You'll travel along Queen Charlotte Drive, traversing the length of the Marlborough Sounds coastline. Magnificent views are abundant so be sure to make time to stop and enjoy the scenery as you go.

Continue through the small port town of Havelock, home to a variety of cafes and restaurants. The highway between Nelson and Picton crosses the pelorus river, and at this junction you'll find the famous pelorus bridge. From here there are a number of forest walks, the most popular a 30 minute loop through beech, rimu, and totara forest. Traverse Tasman Bay passing through Motueka to arrive on the outskirts of Abel Tasman National Park.

Your accommodation: Ocean View Chalets

The Ocean View Chalets are situated on a 50-acre farmlet, slightly elevated and nestled along the bush line with panoramic sea views. Great access the National Park and close to the friendly Marahau village.



Day 11



Abel Tasman National Park

Experience the golden beauty of Abel Tasman National Park, a coastal paradise renowned for its spectacular hiking track, pristine golden beaches, secluded inlets, and private lagoons. With its mild climate and stunning natural environment, it's a cherished destination for New Zealanders nationwide. Why not enjoy a scenic cruise through the Sounds or take a kayaking tour around its many sheltered bays? Relax to the melodious birdsong and get up close to some of the park's many animal residents, including native bats, geckos, birds, marine mammals, fur seals, and dolphins.

Beaches, Bays and Seals Guided Sea Kayaking Trip with Wilsons - Lunch Included

This adventure combines Abel Tasman's stunning beaches, coastal walks, and wildlife. Starting with a Vista Cruise to Torrent Bay, you'll enjoy kayaking, a picnic lunch, and the chance to spot seals and penguins. Return via boat and, in summer, opt for an unguided walk through the beautiful Torrent Bay Lagoon and Cleopatra's Pool. After a refreshing shower at the lodge, you'll cruise back to Kaiteriteri. This tour offers a mix of nature, adventure, and relaxation. It is important you read and understand the risks associated with this activity. For more information see [here](#).

Your accommodation: Ocean View Chalets

The Ocean View Chalets are situated on a 50-acre farmlet, slightly elevated and nestled along the bush line with panoramic sea views. Great access the National Park and close to the friendly Marahau village.

Meals included: Lunch



Day 12



Marahau to Picton

The drive from Abel Tasman National Park (Mārahau) to Picton is a stunning journey transitioning from the golden-sand beaches of the Tasman region to the spectacular waterways of the Marlborough Sounds. After leaving Mārahau and heading through the orchards of the Motueka Valley, you can make your first stop in Motueka itself for a coffee or to check out the local art scene. The drive takes you through the city of Nelson and along the coast of Tasman Bay towards the Bryant Range. The highway between Nelson and Picton also crosses the Pelorus River and just at this junction is the famous and historic Pelorus Bridge. From here there are a number of forest walks with the most popular the 30 minute loop through beech, rimu and totara forest to the swing-bridge. Starting in the town of Havelock the Queen Charlotte Drive travels the Marlborough Sounds coastline towards the port town of Picton. Magnificent views of the sounds can be had from many vantage points so allow plenty of time to enjoy the scenery. If you can spare the time take the narrow windy road to Portage along Mahau Sound and Kenepuru Sound with their bush clad hillsides and secluded sandy coves. Arrive in the busy port town of Picton, and it's here that the Interislander ferries arrive and depart. The small town centre has plenty of shops and cafes and the waterfront area is a very pleasant place to spend a few hours watching the activity of the ships. The Edwin Fox Maritime Centre on the wharf is worth a visit with the star attraction being the vessel the Edwin Fox, reputedly the 9th oldest ship in the world.

Interislander Ferry Picton to Wellington

The 92 km journey between Picton and Wellington takes around 3 hours and has been described as 'one of the most beautiful ferry rides in the world'. Around one hour of the cruise takes you through the Marlborough Sounds. This region of bush covered mountains, small islands, crystal clear waters and secluded bays offer remarkable photographic opportunities.

From the Cook Strait, spectacular views of the Kaikoura Ranges on the South Island can be enjoyed and often dolphins and sea birds are seen. After crossing the strait you approach Wellington Harbour and pass many interesting points such as Pencarrow Head on top of which is New Zealand's oldest lighthouse (1859). Red Rocks is home to a seal colony and Oterangi Bay is the site which recorded the country's highest ever wind speed of 268 kph (167 mph).

Collect Rental Car

This tour's from price includes an intermediate-sized vehicle, setting you up for comfortable travels. Yet, we understand every adventure is unique! Feel free to select the perfect wheels from our incredible collection of rental cars, spanning from economy hatchbacks to premium SUVs.

Your accommodation: Adina CityLife Wellington [Formerly Heritage CityLife Wellington]

Adina CityLife Wellington is a suite style hotel with every amenity required for a comfortable stay, as well as being in a superb location to explore the compact city centre. Situated on Lambton Quay, you'll find the best shopping, tourist attractions and cultural landmarks all within easy walking distance.



Day 13



Wellington

Wellington known in Māori as Te Whanganui-a-Tara is home to New Zealand's centre of government. Often referred to as 'mini Melbourne', this windy city is a melting pot of art, culture, food, and fashion. Quirky laneway bars, underground art shows, and hipster eateries make up its inner-city vibe, while a host of sandy beaches outside the urban bustle bring a cheerful holiday feel. Head to Te Papa Museum for a history lesson and a ticket to one of its many international exhibitions or jump aboard the Wellington Cable Car - the only running funicular railway in the country. For those with an eye for boutique, fashion wander through Cuba St to sample some of the city's best vintage stores. Break for coffee at a hipster cafe and be sure to snap a pic outside the 'Beehive', New Zealand's parliamentary debate chamber. Go behind the scenes at Weta Workshop Experience, the Oscar Award Winning design studio behind Lord Of The Rings, The Hobbit, and Avatar. If you're a foodie at heart, a two-hour round trip to Martinborough is a must-do. Take your time as you wind through spectacular wine country. For an educational day out, learn about New Zealand's native species at Zealandia, the world's first fully-fenced eco-sanctuary and home to over 40 types of endangered and native birds.

Zealandia By Night Wildlife Sanctuary Tour

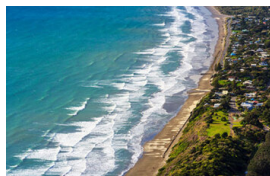
Taking a night tour of Zealandia wildlife eco-sanctuary is an unforgettable experience and one that comes highly recommended. A conservation success and safe haven for some of New Zealand's rarest native animals, Zealandia is home to many remarkable species of birds, reptiles and insects living wild within a beautiful 225 hectare (one square mile) valley, just 10 minutes from the central city.

Your accommodation: Adina CityLife Wellington [Formerly Heritage CityLife Wellington]

Adina CityLife Wellington is a suite style hotel with every amenity required for a comfortable stay, as well as being in a superb location to explore the compact city centre. Situated on Lambton Quay, you'll find the best shopping, tourist attractions and cultural landmarks all within easy walking distance.



Day 14



Wellington to Rotorua

The drive from Wellington to Taupo takes you via the Kapiti Coast and the seaside towns of Plimmerton, Paekakariki and Paraparaumu are worth a short detour. Heading north you pass through the rural towns of Taihape, Mangaweka and Bulls before arriving onto the central plateau. A little further the military town of Waiouru is home to the National Army Museum, an incredible collection of New Zealand's military history and a memorial to its servicemen. Skirting Tongariro National Park, one of New Zealand's three world heritage sites, you can see the 2,500 metre peak of the volcanically active Mt. Ruapehu. You might also recognise the symmetrical shape of Mt. Ngauruhoe as this was used as the scenery of Mt. Doom in the Lord of the Rings Trilogy. The township of Taupo sits on the shores of New Zealand's largest lake, Lake Taupo - a gigantic volcanic caldera formed during one of the world's largest ever eruptions. Just north of the town are the Huka Falls and a short detour to view is advised. The Huka Jet can get you much closer with a thrilling jet boat ride. Nearby Craters of the Moon is a geothermal reserve with great walking tracks around its many boiling pools and steaming vents. Continuing on to Rotorua you pass the volcanic valley, visit either Wai O Tapu or the Waimangu Valley for a closer look. Arriving into Rotorua the city's geothermal activity is evident with steam rising from the roadside and hills. Rotorua is considered the heart of New Zealand's Maori cultural and it's here you can learn of their history and traditions. The Ohinemutu Village is located on the site of the first Maori settlement in the area. One of the most popular introductions for many to the Maori culture is through an evening at Mitai Maori Village. Here you will gain an insight into the traditional Maori way of life through song, dance and entertainment. A dinner prepared in the traditional manner is served to finish the evening off.

SUGGESTED ACTIVITY - National Kiwi Hatchery Experience

The National Kiwi Hatchery Experience is a special opportunity to gain insight into and view this highly regarded conservation centre. Developed with the visitor experience in mind, the hatchery boasts special viewing opportunities and is hosted by kiwi expert guides who ensure guests leave fully informed and all questions answered. Learn all about New Zealand's intriguing national icon and the efforts of the kiwi husbandry team, see and discover what it takes to hatch and rare chicks, and if you're lucky see baby chicks in person!

SUGGESTED ACTIVITY - Wai-O-Tapu Thermal Wonderland

Wai-O-Tapu Thermal Wonderland is a spectacular showcase of New Zealand's colourful and unique geothermal elements sculpted by thousands of years of volcanic activity. You will be introduced to a diversely different natural landscape, extending over 18-sq. km. Enjoy viewing the volcanic features as you walk at your own pace along well-defined tracks. Relax in the first-class Visitor Centre, home to the Gift Shop and Cafe facilities. Visit the Mud Pool, the largest in New Zealand, it was originally the site of a large mud volcano which was destroyed through erosion in the 1920s. See the history and beauty of the Lady Knox Geyser at 10:15 am every day where a daily eruption happens of up to 20 metres.

Your accommodation: Quest Rotorua Central

Located in the heart of Rotorua, just a stone's throw from the restaurant and shopping precinct. Purpose built in 2012, all apartments are equipped with modern fixtures, full cooking and laundry facilities that make Quest Rotorua Central your perfect home away from home.



Day 15



Te Ra Daytime Experience at Te Puia

Te Puia welcomes you to explore the magic hidden within Te Whakarewarewa Thermal Valley. Become face-to-face with the majestic Pōhutu Geyser, the largest naturally active geyser in the Southern Hemisphere. Feel the thrill as it erupts, sending plumes of steam into the sky. Then, step into the Kiwi Conservation Centre, for a close-up encounter with this rare native species, a symbol of our nation's unique wildlife. Part of your ticket is donated to support the conservation of the Kiwi in this sanctuary. As you continue through the Te Puia Valley, look upon the dynamic landscape of bubbling mud pools, and steaming vents and feel the power that the land holds. Throughout this, everywhere you look you will see beautifully crafted Māori-made artwork and sculptures, each piece a story carved in wood and stone, adding a layer of cultural depth to the natural beauty. Step into the New Zealand Māori-made artwork and sculptures, each piece a story carved in wood and stone, adding a layer of cultural depth to the natural beauty. The guides are direct descendants of the original tour guides, and you can feel their excitement to show their culture and land.

Original Ziplining Experience with Rotorua Canopy Tours

Embark on a three-hour adventure through the native New Zealand forest. Journey through the beautiful forest canopy via an incredible network of trails, tree platforms, Ziplines and swing bridges. See breathtaking views of the woodland valleys and hills as you fly through tight openings in the trees. In between the thrill of the ziplines and suspended tree bridges, your guides will share their passion and knowledge for the forest and the conservation challenges to preserve it. It is important you read and understand the risks associated with this activity. For more information see [here](#).

Your accommodation: Quest Rotorua Central

Located in the heart of Rotorua, just a stone's throw from the restaurant and shopping precinct. Purpose built in 2012, all apartments are equipped with modern fixtures, full cooking and laundry facilities that make Quest Rotorua Central your perfect home away from home.



Day 16



Rotorua to Matamata

Leave the steaming vents and boiling pools of the geothermal region behind as you make your way through the lush dairy pastures of the Waikato. Take in the emerald green landscapes most famous for their role in the Lord of the Rings and Hobbit films. Arrive into the small town of Matamata, for a visit to the fully intact set of Hobbiton.

Hobbiton Movie Set Tour from Shires Rest

In the heart of New Zealand, you can step into the lush pastures of the Shire with a guided tour of Hobbiton, as featured in The Lord of the Rings and The Hobbit Trilogies. Hobbiton is located just outside of Matamata in the heart of the lush Waikato farming region. Here you can visit such iconic Hobbit locations as Hobbit Holes, the Green Dragon Inn, the Mill and the Party Tree with a guide sharing behind-the-scenes tales and insight into the making of the films. Spend time wandering through Bagshot Row before being led inside a Hobbit Hole to view the detailed interior, designed to provide an authentic glimpse into the dwelling of a Hobbit.

Matamata to Auckland

Your drive continues north west crossing the dairy country of the Hauraki Plains before arriving at State Highway 1. The Bombay Hills guide you to Auckland City.

Your accommodation: Oaks Auckland Hotel

Oaks Auckland Hotel offers a comfortable self-contained apartment in downtown Auckland. Located a short walk from Britomart Transport and the Viaduct. Enjoy your stay in central Auckland surrounded by delicious eateries or use your in-house kitchenette to dine in!



Day 17



Auckland to Paihia

The drive from Auckland to the Bay of Islands takes approximately 3.5 hours, but allow extra time to enjoy the sights along the way. Pause for a breath of fresh salty air in Whangarei, where you can explore scenic highlights like the Whangarei Falls or the lively Town Basin. Further along, take a break in Kawakawa known for its quirky, world-famous Hundertwasser Toilets. As you approach Paihia, the gateway to the Bay of Islands, soak in the stunning views of native bush and endless golden beaches that define this iconic Northland region.

Your accommodation: Sea Spray Suites

Sea Spray Suites offers comfortable and relaxing accommodation close to Paihia's best activities and attractions. Directly across the road is the beautiful Te Ti Beach, exploring Paihia's beautiful waters and wildlife is only a short step away. If you are interested in experiencing New Zealand's heritage, The Waitangi Treaty House is only 1km away.



Day 18



Hole in the Rock Cruise with Fullers GreatSights

Board your cruise and take in the stunning views as you glide out through the islands and along the Rakaumangamanga Peninsula to Cape Brett, where a historic lighthouse keeps watch over and Piercy Island/Motukōkako, or as it is popularly known as the Hole in the Rock. According to Māori legend, local warriors used to paddle through the Hole in the Rock in their canoes before departing for battle. Drops of water from the cave roof above were a good omen. If conditions permit, your skipper will expertly guide the ship through the narrow space. Keep an eye out for common and bottlenose dolphins, whales, and other marine life during your cruise, and have your camera ready as you get up close to the action. Stop off at Otehei Bay on Urupukapuka Island where you have time to relax, take a walk, have a swim, or enjoy a bite to eat and drink from the on-site fully licensed cafe. The purpose-built catamaran is licensed by DOC (the Department of Conservation) for dolphin viewing and the crew has years of experience locating dolphins in these waters.

Explore Bay of Islands

Commonly known as the 'winterless north', New Zealand's Bay of Islands is made up of over 140 subtropical atolls. Renowned for its untouched beaches, abundant marine life, and idyllic climate, this tropical paradise ticks all the boxes. Spend some time on a remote stretch of beach, or see the dolphins on an ocean safari. If diving is your thing, take the morning to descend the Rainbow Warrior - The Greenpeace flagship sunk by French saboteurs in 1985. Wander around Russell, a whaling port founded in 1843. Learn about our culture in historic Waitangi, the site where The Treaty of Waitangi was signed in 1840 between the Māori and Europeans. Alternatively, you may like to take a day tour to Cape Reinga, the very top of the North Island.

SUGGESTED ACTIVITY - R. Tucker Thompson Full Day Sailing

Experience the Bay of Islands the old-fashioned way with a cruise on the R. Tucker Thompson, a traditional gaff-rigged schooner with her own unique history. On the Full Day Sail, be as active as you like – take the helm, help set the sails, ride the bowsprit and climb the rigging – or simply relax while the crew command this impressive ship as she sails across the Bay. During your sail, the crew will share some of the rich history of the area with you. Step ashore and explore a secluded island or take a swim while your barbeque lunch is prepared. About the R. Tucker Thompson - Built from 1970-1985, the R. Tucker Thompson's design is based on the halibut schooners of the North West American coast. With a lofty rig of varnished oregon spars, Kwila decks and bulwarks and brasswork features, she looks the part of a 19th century working ship: purposeful and square-shouldered, but fast enough to out-run the law!

Your accommodation: Sea Spray Suites

Sea Spray Suites offers comfortable and relaxing accommodation close to Paihia's best activities and attractions. Directly across the road is the beautiful Te Ti Beach, exploring Paihia's beautiful waters and wildlife is only a short step away. If you are interested in experiencing New Zealand's heritage, The Waitangi Treaty House is only 1km away.



Day 19



Cape Reinga & Ninety Mile Beach Full Day Tour with Fullers Bay of Islands - Lunch Included

Journey to the very tip of the North Island and uncover a region of rich Māori tradition along the way on an unforgettable full-day tour. Travel along the sand-swept shore of Ninety Mile Beach in our purpose-built coach and experience sandboarding (weather permitting). In Māori tradition, Cape Reinga or Te Rerenga Wairua is the place where spirits depart on their long journey back to the homeland. Stand at the northernmost point of New Zealand and drink in the panoramic views. As you stand beneath the iconic lighthouse, and watch the Tasman Sea and the mighty Pacific Ocean collide far below, you'll feel the power of this special place. Throughout the day your local driver guide will provide an entertaining and thought-provoking insight into the culture, history and natural wonders of the Far North.

Your accommodation: Sea Spray Suites

Sea Spray Suites offers comfortable and relaxing accommodation close to Paihia's best activities and attractions. Directly across the road is the beautiful Te Ti Beach, exploring Paihia's beautiful waters and wildlife is only a short step away. If you are interested in experiencing New Zealand's heritage, The Waitangi Treaty House is only 1km away.

Meals included: Lunch



Day 20



Paihia, Bay of Islands to Auckland via Waipoua Forest

Today you will leave the Bay of Islands for a scenic return trip to Auckland. Head west, leaving the Pacific Ocean for the wilder seas of the Tasman and Hokianga. Go through the small townships of Omapere and Opononi, each with a great seaside feel. Your route now goes south through Waipoua Forest, home to the largest and oldest Kauri trees in the country. Make sure you allow time for several of the signposted short walks as you pass - not to be missed is the five minute loop to view the largest of all the trees - Tane Mahuta. As you make your way back down the country you'll pass the Matakoho Kauri Museum with extensive displays on the region's logging, farming and social history. Continuing on, go through Warkworth and the bohemian settlement of Puhoi before crossing the harbour bridge to arrive in Auckland city.

Your accommodation: Oaks Auckland Hotel

Oaks Auckland Hotel offers a comfortable self-contained apartment in downtown Auckland. Located a short walk from Britomart Transport and the Viaduct. Enjoy your stay in central Auckland surrounded by delicious eateries or use your in-house kitchenette to dine in!



Day 21



Depart Auckland today

Explore more of vibrant Auckland city before dropping your rental car at the airport depot and continuing your onward journey.

Farewell from Aotearoa / New Zealand

Bid farewell to Aotearoa / New Zealand, taking with you unforgettable memories of its breathtaking landscapes and incredible adventures. In Māori, it is said mā te wā, which is not goodbye, it is see you soon!

Tour details

Departures:	Daily
Tour type:	Nationwide Self Drive
Starts:	Queenstown
Finishes:	Auckland
Tour length:	21
Accommodation:	Motels
Car/transport type:	

Accommodation summary

Day 1	Scenic Suites Queenstown
Day 2	Scenic Suites Queenstown
Day 3	The Moorings Wanaka
Day 4	The Moorings Wanaka
Day 5	Mt Cook Motel
Day 6	Mt Cook Motel
Day 7	Terra Vive Luxury Suites and Apartments
Day 8	The White Morph, Kaikōura
Day 9	Blenheim Palms Motel
Day 10	Ocean View Chalets
Day 11	Ocean View Chalets
Day 12	Adina CityLife Wellington [Formerly Heritage CityLife Wellington]
Day 13	Adina CityLife Wellington [Formerly Heritage CityLife Wellington]
Day 14	Quest Rotorua Central
Day 15	Quest Rotorua Central
Day 16	Oaks Auckland Hotel
Day 17	Sea Spray Suites
Day 18	Sea Spray Suites
Day 19	Sea Spray Suites
Day 20	Oaks Auckland Hotel