



31 Day Northbound Experience

This extensive month long tour visits a diverse mix of destinations in both the North and South Islands. With multiple night stays, you'll have time to discover the hidden gems. The tour includes a great range of activities such as wildlife tours, kayaking Abel Tasman, Scenic Flights, Glacier adventures, overnight cruises and so much more. In the evenings you'll relax at our favourite boutique lodges where your hosts will make you feel right at home.

Starts in: Christchurch
Finishes in: Auckland
Length: 31days / 30nights
Accommodation: Boutique Lodges & Hotels
Can be customised: Yes

This itinerary can be customised to suit you perfectly. We can add more days, remove days, change accommodations, mix it up, add activities to suit your interests or simply design and create something from scratch. Call us today to get your custom New Zealand itinerary underway.



Inclusions:

Includes: Late model rental cars

Includes: Unlimited kms

Includes: Airport & ferry terminal rental car fees

Includes: Comprehensive tour pack (detailed itinerary, driving instructions, map/guidebooks, brochures)

Included activity: Electronic Travel Guide and In-Country Support App

Included activity: Cruise and Island Nature Walk with Eco Wanaka

Included activity: Private Transfer Christchurch Train Station to your accommodation

Included activity: Ocean's Cabin with Whale Watch Kaikoura

Included activity: Beaches, Bays and Seals Guided Sea Kayaking Trip Including Picnic Lunch

Included activity: Zealandia By Night Wildlife Sanctuary Tour

Included activity: Mount Tarawera & Orakei Korako Thermal Explorer by Floatplane

Included activity: Hole in the Rock Cruise with Fullers GreatSights

Included activity: Wildlife Peninsula Encounter Tour Including Wildlife Cruise with Monarch

plus much more...

Includes: Fully inclusive rental car insurance (excess may apply)

Includes: GPS navigation

Includes: Additional drivers

Includes: 24/7 support while touring New Zealand

Included activity: Private transfer Christchurch International Airport to your accommodation

Included activity: Franz Josef Glacier Helihike

Included activity: TranzAlpine Scenic Train: Greymouth to Christchurch

Included activity: Half Day Marlborough Wine Tour

Included activity: Interislander Ferry Picton to Wellington

Included activity: Glacier Explorers

Included activity: Driving Creek Railway & Potteries - EyeFull Tower Tour

Included activity: Cape Reinga Scenic Aeroplane Flight and Guided Tour

Included activity: Doubtful Sound Fiordland Navigator Overnight Cruise

Day 1



Private transfer Christchurch International Airport to your accommodation

On arrival, you will be met by a private driver and transferred to your Christchurch accommodation.

Welcome to Christchurch City

Christchurch New Zealand's garden city is steadily being transformed into a vibrant urban destination. Encompassing a large green belt, it is known for its wide tree lined avenues and lush gardens. A great way to explore the city or easy way to see the sights or ride the historic trams across town to the renowned botanic gardens and the unique cardboard Transitional Cathedral, that's right it is built of cardboard!

SUGGESTED ACTIVITY - Discover Christchurch Afternoon Tour

A half day sightseeing tour of Christchurch highlighting both the damage to the city inflicted by several large earthquakes in 2010 and 2011 and the rebuild which is currently in progress, together with the surviving beauty of the city and the historical landmarks. Experience the grand architecture, beautiful gardens and scenic viewpoints on a half-day city tour of Christchurch.

The tour commences in the central city of Christchurch and covers the area which was completely devastated by the Christchurch earthquakes in February 2011. The guide will explain both the history of the city and the effects of the earthquake. On leaving the inner city, the tour travels to Mona Vale a historic homestead and gardens. Then you will travel to the Sign of the Takahe, a historic building with a lookout providing spectacular views over the city, Canterbury Plains and to the Southern Alps. The tour then travels via the Port Hills and Lyttleton Harbour by way of the Sign of the Kiwi and Governors Bay to the Port of Lyttleton. The tour proceeds through the Lyttleton harbour tunnel to the seaside suburb of Sumner and cave rock before returning to the central city where the tour will conclude.

Your accommodation: Orari Apartments

Orari Bed and Breakfast offers elegant and inviting accommodation in the heart of Christchurch city. This heritage building has all the charm of a grand Victorian home, but with modern comforts providing for an enjoyable stay.



Day 2



Collect your rental car

This tour can be priced with any of the rental cars available in our fantastic range, from economy hatchbacks to prestige saloons and SUV's.

Christchurch to Aoraki Mt Cook National Park

Today you'll drive through the heart of the South Island, crossing the vast Canterbury plains. Catch your breath in Geraldine before continuing through Fairlie. Ascending Burkes pass you'll come to the picturesque lakeside town of Tekapo.

Follow the road and take in the view of Aoraki Mt Cook (New Zealand's tallest mountain) from the shores of Lake Pukaki, known for its glacier fed turquoise blue colour. Continue along the lake to your final destination Mt Cook Village.

Please note: There are no food shops at Mt Cook, and dinner options are limited to one restaurant. If you wish to self-cater, you must stock up before arriving in Mt Cook, or make dinner reservations in advance.

Glacier Explorers Mt. Cook

Experience 500 year old icebergs up-close on the Mt Cook terminal lake. The Glacier Explorers tour is the only one of its kind in New Zealand and one of only three in the world! Very few glaciers terminate into lakes and even fewer of them are accessible. See towering ice cliffs and floating icebergs from the safety of a specially designed boat. These boats provide a safe way to view unseen and inaccessible areas of New Zealand's largest glacier The Tasman.

Your accommodation: Hermitage Hotel, Aoraki Wing Premium

The Hermitage Hotel ringed by magnificent snow-capped peaks of the Southern Alps, is a world-renowned tourist destination and has been an icon of superior accommodation and dining since 1884.

Meals included: Breakfast



Day 3



Aoraki Mt Cook National Park to Dunedin

Today you'll leave Aoraki Mt Cook National Park and travel past Twizel, one of the locations for the Lord of the Rings films. Go through Omarama, the gliding capital of New Zealand, be sure to stop at The Wrinkly Ram, a quirky local cafe and souvenir store. Driving through the Waitaki Valley follow the hydro power generating system towards the east coast. Stretch your legs in Oamaru, known for its white stone buildings constructed with the local Oamaru Stone. If you were a little late off the mark this morning you may get the chance to see the blue penguins come ashore at dusk.

Continue south down the coast to Moeraki, and take a detour towards the beach to see the Moeraki Boulders, a unique geological feature well worth a look. As you arrive in Dunedin, take in the city's Edwardian and Scottish heritage reflected in the buildings around the city centre The Octagon.

Your accommodation: Fable Dunedin

Located in the centre of Dunedin, Fable Hotel is within walking distance of shopping, cafes and restaurants and the central focus of the Octagon. Beautifully appointed accommodation and a chic restaurant and bar are augmented by contemporary touches throughout.

Meals included: Breakfast



Day 4



Wildlife Peninsula Encounter Tour Including Wildlife Cruise with Monarch

A small-group bus tour from Dunedin. Join a local guide for a journey across the Otago Peninsula. Travel over the high road with postcard views of the harbour and coast. You'll travel past quaint communities and rural farms. Spot wading birds as your mini-bus explores around the inlets and the wetland eco-systems. Your tour will visit a remote Otago Peninsula beach. A short walk from the mini-bus will provide dramatic views of rugged coastal cliffs, offshore islands and perhaps some huge sea lions. The trip continues to Wellers Rock Wharf, for a Monarch Wildlife Cruise. You'll travel out of the harbour, around Taiaroa Head, and out to sea. Watch royal albatross glide across the water and return to their breeding colony. Beneath a historic lighthouse is a colony of playful fur seals. You'll spot other rare seabirds and maybe blue penguins or other marine mammals. You are also welcome to bring a pre-packed meal on tour with you. Snacks and drinks can be purchased whilst aboard the MV Monarch. We recommend having a good-sized lunch before the tour departs Dunedin. The final stop is at a Yellow-eyed Penguin conservation reserve. Visit the on-site rehab centre before a tour of the reserve. You'll take trails through native bushland, walking through tunnels and trenches to different viewing hides scattered around the reserve. Watch as the world's rarest penguin returns ashore and interacts around their nesting sites. The tour ends with a relaxed drive, following the harbour, back to Dunedin.

Your accommodation: Fable Dunedin

Located in the centre of Dunedin, Fable Hotel is within walking distance of shopping, cafes and restaurants and the central focus of the Octagon. Beautifully appointed accommodation and a chic restaurant and bar are augmented by contemporary touches throughout.

Meals included: Breakfast



Day 5



Dunedin to Te Anau

The drive to Te Anau takes you through classic Southland farming scenery. Head off-the-beaten-track today and follow the coastline instead of the inland route. Go through The Catlins area and be sure to take a detour to Kaka Point to view its majestic cliffs and pounding surf. Continue through Invercargill to Riverton and Colac Bay, and then head north to Manapouri. From here you can embark on a day or overnight cruise to the remote Doubtful Sound, renowned for its natural beauty. Just a short way further will bring you to your lakeside destination of Te Anau, gateway to Fiordland National Park and Milford Sound.

SUGGESTED ACTIVITY - Te Anau Glowworm Caves with RealNZ

Begin your Te Anau Glowworm experience with a scenic cruise across Lake Te Anau on board the luxury catamaran, Luminosa, to the western side of the lake. On arrival, you'll enter the caves through Cavern House, where informative displays detail the history of this 12,000 year old underground network.

You'll then explore by limestone pathway while your guide points out hidden whirlpools, sculpted rock formations and a rushing underground waterfall. See a magical display of thousands of glowworms as you glide through the darkness in a small boat.

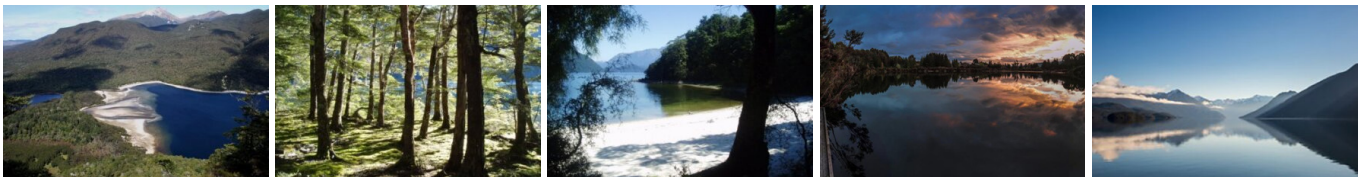
Your accommodation: Te Anau Lodge

Te Anau Lodge began its existence as a Catholic convent in 1936 before being converted into a wonderful lodge. A beautiful Rimu wood interior awaits you and each of the 7 rooms house furniture made from stunning native woods.

Meals included: Breakfast



Day 6



Te Anau to Manapouri

This short drive takes you along the lake edge of Te Anau and across lush southern farmlands to the small township of Lake Manapouri, gateway to Doubtful Sound.

Doubtful Sound Fiordland Navigator Overnight Cruise

Take in the tranquility of remote Doubtful Sound on this unique overnight wilderness cruise. Beginning in Manapouri with a short boat ride across the lake, you'll be taken by coach over the Wilmot Pass to Deep Cove, Doubtful Sound. Board the Fiordland Navigator, a purpose-built vessel designed like a traditional coastal trading scow. Be accommodated in a private cabin with an ensuite bathroom or a quad-share bunk room with shared bathroom facilities. The Navigator has a large spacious deck for viewing the scenery and wildlife as well as a dining saloon, bar and observation lounge. As you take in the stunning scenery of the Fiord, you'll be provided with a running commentary of the area and its history, points of interest and wildlife. You'll have the opportunity to see dolphins, fur seals and, if you're lucky rare Fiordland penguins. After anchoring in a sheltered cove, choose to explore the shoreline by kayak or stabcraft, or if you're really brave take a dip in the water. In the evening enjoy a three-course buffet dinner prepared on board and served in the dining saloon. Enjoy beer and fine wines from the licensed bar, and spend time star gazing on the upper deck. Following hearty cooked breakfast the next morning you will spend your remaining time exploring other parts of the fiord before returning to Deep Cove for the trip back to Manapouri.

Your accommodation: Fiordland Navigator Overnight Boat in Doubtful Sound

The Fiordland Navigator is purpose built for cruising in the fiords. The vessel offers spacious viewing decks, a comfortable dining saloon and observation lounge.

Meals included: Breakfast, Lunch, Dinner



Day 7



Manapouri to Queenstown

Your Doubtful Sound Overnight Cruise returns to Manapouri at midday.

Crossing the rolling tussock lands, pass through Mossburn, the deer capital of New Zealand. Continue north through lush Southland countryside towards Lake Wakatipu. The road now hugs the lake edge and the Remarkable mountain range towers over your approach to Queenstown, the adventure capital of New Zealand.

TSS Earnslaw cruise to Walter Peak including gourmet BBQ dinner and a farm tour

Enjoy a quintessential Kiwi experience, a delicious gourmet BBQ buffet meal and a farm demonstration in a stunning lakeside setting. Take in the stunning views of Lake Wakatipu and its surroundings as you cruise across the lake to the historic Walter Peak high country farm aboard the TSS Earnslaw Steamship.

Enjoy the ambience of the heart of the stately homestead while your Colonel's Homestead Restaurant chef prepares a gourmet BBQ dinner. Your seasonal menu includes an extensive selection of local New Zealand produce, including succulent meats and a selection of delicious vegetables and salads. Complete your meal with your choice of delicious desserts, New Zealand cheeses, tea and coffee.

After dinner, watch the farm dogs in action with a sheep-herding demonstration and say hello to the other farm animals. Finally, cruise home under the southern stars and enjoy the fresh night air as the lights of Queenstown draw ever closer.

Your accommodation: The Dairy Private Hotel by Naumi

The Dairy Private Hotel – a unique blend of exquisite design, rich history and warm hospitality in the city centre. Beginning as Queenstown's original 'dairy' (corner store) in 1920, it has now transformed into an interiors masterpiece after an exquisite refurbishment that features wallpapers from British luxury interiors brand House of Hackney.

Meals included: Breakfast, Speciality Dinner



Day 8



Dart River Wilderness Jet

Journey deep into the heart of the world-renowned Mt Aspiring National Park, where myth, heritage and fantasy come to life. As one of Queenstown's most exhilarating activities, the Wilderness Jet adventures on a spectacular journey deep into the heart of the world-renowned Mount Aspiring National Park.

Your accommodation: The Dairy Private Hotel by Naumi

The Dairy Private Hotel – a unique blend of exquisite design, rich history and warm hospitality in the city centre. Beginning as Queenstown's original 'dairy' (corner store) in 1920, it has now transformed into an interiors masterpiece after an exquisite refurbishment that features wallpapers from British luxury interiors brand House of Hackney.

Meals included: Breakfast



Day 9



Explore Queenstown

Well-known as New Zealand's 'adventure capital', Queenstown is home to a range of adventures, from the world's first and most famous bungy jumps to jet boat thrills, white-water rafting, and skydiving. However, Queenstown offers far more than a fast-paced, action-packed holiday. Settled on the shores of beautiful Lake Wakatipu beneath a soaring panorama of the Remarkables Mountain Range, this alpine town is surrounded by a plethora of historic, gastronomic, and scenic wonders. Take a stroll through the beautiful lakefront parks and gardens, browse through market stalls on weekends, dine in wonderful al-fresco restaurants, or ride on the 100-year-old historic Steamship - TSS Earnslaw to Walter Peak Station. Take the Queenstown Gondola up to Bob's Peak and soak up the panoramic views of the magnificent lake and mountain ranges. And after all of that, if you do want the adrenaline rush, Queenstown is known for taking your pick from the Shotover Jet, Canyon Swing, Zipline, Luge, or Heli-ski.

SUGGESTED ACTIVITY - Skyline Gondola Queenstown and 3 Luge Rides

In the heart of Queenstown, located 450 metres above town in the Ben Lomond Scenic Reserve is the Skyline Complex. A gondola ride to the summit makes for awe-inspiring views of the city surround. Arrive at the complex and wander the outside viewing decks for a picture perfect outlook. Then onto the Luge! The 800 metre luge track offers an exhilarating journey through banked corners, tunnels and dippers.

SUGGESTED ACTIVITY - Appellation Boutique Wine Tour

Experience a tasting journey through three of Central Otago's incredibly scenic and varying wine sub-regions; Gibbston, Bannockburn and Cromwell. Visit three boutique vineyards, tasting their unique cool climate wines and discover why the Central Otago region has become world-renowned in its own right.

Indulge at a fourth vineyard restaurant for a platter-style lunch, savouring the finest and freshest produce, accompanied with a wine flight. There will also be an opportunity to retrace history when you stroll through the charming historical settlement of Old Cromwell.

Your accommodation: The Dairy Private Hotel by Naumi

The Dairy Private Hotel – a unique blend of exquisite design, rich history and warm hospitality in the city centre. Beginning as Queenstown's original 'dairy' (corner store) in 1920, it has now transformed into an interiors masterpiece after an exquisite refurbishment that features wallpapers from British luxury interiors brand House of Hackney.

Meals included: Breakfast



Day 10



Queenstown to Wanaka

Leaving Queenstown you'll drive over New Zealand's highest sealed road, the Crown Range before arriving into the resort town of Wanaka.

Cruise and Island Nature Walk with Eco Wanaka

Lying close to the centre of Lake Wanaka is Mou Waho Island Nature Reserve. A unique glacial remnant of the last ice age, the island is also the historic site of early shipbuilding and used to be a stopping place for the steamers and log rafts that once plied the lake. Accessible from Wanaka by a 35-minute boat cruise, the landing is on the eastern side of the island where the remnants of the early settlement remain; a stone wharf and a hut. A well-formed track leads from the landing and climbs steadily through native bush to near the top of Tyrwhitt Peak. Just before the top, we see Arethusa Pool, a small lake on the island with small islands in it - very intriguing! From the top, we have a sweeping 360-degree view of Lake Wanaka, its surrounding mountains and valleys, and below Arethusa Pool. The perfect spot to stop for tea or coffee. Going back down the track gives us more time to take in our surroundings, listening to and watching the lively bird-life, and just enjoying this unique wildlife reserve. You will feel well rewarded as you re-join the boat for the cruise back to Wanaka. Total cruise time is 1.5 hours. The trip runs subject to weather and lake conditions. Depending on the planting season, you can help The Reforestation of Mou Waho by planting a tree.

Your accommodation: Tin Tub Luxury Lodge

Experience the Tin Tub Luxury Lodge in Wanaka, an alpine hideaway you won't want to leave. Enjoy the magnificent views while you relax in the heated swimming pool or from your personal balcony.

Meals included: Breakfast



Day 11



Wanaka to Franz Josef Glacier

The route follows the shores of Lakes Wanaka and Hawea before you enter the village of Makarora, the gateway to Mt. Aspiring National Park. The Blue Pools, just outside Makarora, are a wonderful 30-minute walk through pristine native beech forest. Descending into Mt. Aspiring National Park and towards the Haast Pass, crashing rivers and waterfalls are around every corner. Crossing the Haast River you are now truly on the wild West Coast, a 600-kilometre stretch of bush, rainforest, and podocarp forest.

Paringa Salmon Farm is a great halfway stop to stretch your legs, feed the fish, and stop for lunch or refreshment.

First Fox Glacier welcomes you to the glacier region and Franz Josef township is just a further 45 minutes' drive over the impressive Fox Hills.

SUGGESTED ACTIVITY - Siberia Experience with Southern Alps Air

The Siberia Experience is a 4 hour wilderness adventure in Mt. Aspiring National Park. Leaving from Makarora at the head of Lake Wanaka you will enjoy some of New Zealand's untouched scenery from the air, on land and from the water. Mountains, rivers, glaciers, alpine lakes, rain forest, waterfalls and more - this is your chance to see it all. This unique adventure incorporates a 25 minute unforgettable scenic flight with Southern Alps Air, a 2 1/2 hour walk beginning in the remote Siberia Valley in Mt. Aspiring National Park and a 30 minute exciting Jet Boat ride with Wilkin River Jets.

Your accommodation: Westwood Lodge

Westwood is a purpose built lodge, crafted entirely from wood and exquisitely decorated throughout. The lounge is the place to meet to watch the Southern Alps turn a soft pink in the setting sun.

Meals included: Breakfast



Day 12



Franz Josef Glacier Helihike

After a thrilling scenic flight, high above the rugged terrain, you will land on the glacier, ready to undertake a 2.15 hour guided glacier hike. Your friendly guide will lead you through some of the most pristine and awe-inspiring glacial scenery in the world. Your guide will choose your route carefully as you go and, with an eye for the most spectacular ice formations, you'll soon be making your way through an extraordinary landscape of towering peaks and glistening blue ice. It is important you read and understand the risks associated with this activity prior to travel. For more information please see [here](#).

Your accommodation: Westwood Lodge

Westwood is a purpose built lodge, crafted entirely from wood and exquisitely decorated throughout. The lounge is the place to meet to watch the Southern Alps turn a soft pink in the setting sun.

Meals included: Breakfast



Day 13



Franz Josef to Greymouth Train Station

Today head north along the mighty West Coast highway you pass through ancient temperate rainforests while getting sneak peeks of the wild coast beach occasionally. Whataroa is the next town where you can see one of the world's rarest birds, the New Zealand white heron or Kotuku nest at the Waitangi Roto Nature Reserve, and guided tours from October to March will take you there. Ross is the site of an old gold mining town and some of the old buildings and workings remain. In fact, Ross is still home to one of the few working gold mines left in New Zealand and the local information center offers you the chance to pan for gold.

Hokitika is a great place to explore craft and gift stores and head to the coast and take in the endless sea views. The Jade or Greenstone on offer in Hokitika is probably some of the best you will see in the country. The Hokitika Gorge is located 45 minutes inland and offers turquoise waters flowing through a narrow gorge. A great short walk will deliver you to this piece of paradise.

Continue on to Greymouth, the largest town on the West Coast and the starting point for the next leg of your journey the TranzAlpine Scenic Train. Drop your rental car at the Greymouth Train Station depot located at the train station building before boarding your train to Christchurch.

TranzAlpine Scenic Train: Greymouth to Christchurch

Considered one of the world's great train journeys, the TranzAlpine Scenic Train takes you from Greymouth to Christchurch. You'll travel across the South Island from the west to the east coast through Arthur's Pass National Park. From the comfort of your carriage see lush beech forest, deep river valleys and the spectacular peaks of the Southern Alps. Descend to the windswept Canterbury Plains before arriving in the city of Christchurch.

Private Transfer Christchurch Train Station to your accommodation

On arrival at the Christchurch train station, you will be met by a private driver and transferred to your accommodation.

Your accommodation: Orari Apartments

Orari Bed and Breakfast offers elegant and inviting accommodation in the heart of Christchurch city. This heritage building has all the charm of a grand Victorian home, but with modern comforts providing for an enjoyable stay.

Meals included: Breakfast



Day 14



Collect your rental car

This tour can be priced with any of the rental cars available in our fantastic range, from economy hatchbacks to prestige saloons and SUV's.

Christchurch to Kaikoura

The drive north from Christchurch to Kaikoura takes you through the rolling hills of North Canterbury's major wine region, the Waipara Valley. Allow time for a detour and visit Hanmer Springs for a dip in the mineral hot pools. Continue on and cross the Hawkswood Range before descending to the spectacular Kaikoura coastline - where the road hugs the ocean for the last leg of the drive.

Ocean's Cabin with Whale Watch Kaikoura

Experience New Zealand's only marine based whale watching company. Whale Watch Kaikoura offer a once-in-a-lifetime, up close encounter with the giant Sperm Whale. You are also likely to encounter New Zealand fur seals, dusky dolphins and albatross. Depending on the season you may also see pilot, blue and southern right whales as well as migrating humpbacks. Often orcas can be spotted here and the world's smallest dolphin, the Hector's, occasionally make an appearance.

Cruise in style on modern catamarans, specifically designed for whale watching, featuring large passenger cabins and outside viewing decks. Passenger numbers for each tour are kept below the vessel carrying capacity to ensure your tour experience remains a personal one.

Your accommodation: Bendamere House B&B

Bendamere House B&B has quality ensuite rooms, detached from the main house adding to the privacy and comfort, with superb views overlooking the Pacific Ocean and Seaward Kaikoura mountain range.

Meals included: Breakfast



Day 15



Kaikoura to Blenheim

Heading north from Kaikoura, the road hugs the shore for approximately 50 kilometres and offers many opportunities to view the native wildlife such as seabirds and New Zealand fur seals. One of the best seal watching locations is Ohau Point (25km north of Kaikoura), where you can observe the adults on the shoreline and the pups frolicking in the waterfall, just a short walk from the road (signposted). As you drive you will have turquoise waters of the South Pacific Ocean to your east and to the west the towering Kaikoura Ranges. Crossing the dry hills of the Marlborough ranges you head towards Marlborough, New Zealand's largest wine producing region. Blenheim sits right at the heart of Marlborough and is ideally located to enjoy an afternoon sampling the local produce. A great way to do this is to take a guided wine tour with Sounds Connection Wine Tours.

Half Day Wine Tour

An afternoon among the vines! Be immersed in the Marlborough wine country with the Sounds Connection half day wine tour. You'll be collected from your accommodation and taken through three or four hand-picked wineries to taste the award-winning produce this region is known for. You'll also hear about the history of winemaking in Marlborough as well as learning the unique processes each winery goes through. A lunch stop is not included in this tour so we do advise you have something to eat prior to this activity.

Your accommodation: Marlborough Bed & Breakfast at Woodside

Marlborough Bed and Breakfast is an 1877 historic B&B nestled in 7 acres offering quiet relaxed luxury. Relax at this ideal base for exploring one of the world's finest wine regions.

Meals included: Breakfast



Day 16



Blenheim to Abel Tasman National Park via Queen Charlotte Drive

Take a short drive to the small port of Picton where the Interislander ferry connects with Wellington. A bustling seaside destination, Picton is well equipped with shops, cafes and is also the starting point for the famous Queen Charlotte Walk. You'll travel along Queen Charlotte Drive, traversing the length of the Marlborough Sounds coastline. Magnificent views are abundant so be sure to make time to stop and enjoy the scenery as you go.

Continue through the small port town of Havelock, home to a variety of cafes and restaurants. The highway between Nelson and Picton crosses the pelorus river, and at this junction you'll find the famous pelorus bridge. From here there are a number of forest walks, the most popular a 30 minute loop through beech, rimu, and totara forest. Traverse Tasman Bay passing through Motueka to arrive on the outskirts of Abel Tasman National Park.

Your accommodation: Kimi Ora Eco Resort

Kimi Ora Eco Resort offers panoramic views of Kaiteiteri beach and estuary and is close to the Abel Tasman National Park. Surrounded by beautiful native bush, these chalets offer peace and seclusion.

Meals included: Breakfast



Day 17



Abel Tasman National Park

Abel Tasman National Park, known for its coastal hiking track has an abundance of golden beaches, inlets and private lagoons. The park has a mild climate and is a special place to visit at any time of the year. Why not enjoy a scenic cruise through the Sounds or take a kayaking tour around its many sheltered bays? Relax to the melodious birdsong and get up close to some of the parks many animal residents, including native bats, geckos, birds and marine mammals fur seals and dolphins.

Beaches, Bays and Seals Guided Sea Kayaking Trip Including Picnic Lunch

Combining the best of the Abel Tasman, this trip showcases incredible beaches, coastal walks and native wildlife. First you'll meet your guide and join the 9.30 am Vista Cruise along the magnificent coastline to Torrent Bay. You'll then arrive at Torrent Bay Lodge and complete a full training session and safety briefing before moving on to the water in kayaks to discover beautiful beaches, tidal estuaries and rivers.

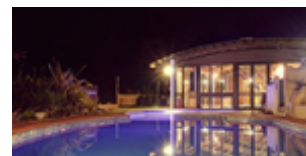
Stop for a picnic lunch in a sheltered cove and take some time to swim, explore or sunbathe on the sand. On your return trip, if the winds are favourable, sails will be hoisted and you'll sail back via Pinnacle Island to view the seal colony there - if you're lucky, you may even see some resident blue penguins at the same time. Arriving back at Torrent Bay Lodge, freshen up with a hot shower and re-join the vista cruise back to Kaiteiteri, arriving at 4.10 pm.

During the summer there is the option to enjoy an unguided two hour coastal bush walk after the kayaking trip. Walk around the picturesque Torrent Bay Lagoon via Cleopatra's Pool to the anchorage where you will re-join the boat back to Kaiteiteri. It is important you read and understand the risks associated with this activity. For more information see [here](#).

Your accommodation: Kimi Ora Eco Resort

Kimi Ora Eco Resort offers panoramic views of Kaiteiteri beach and estuary and is close to the Abel Tasman National Park. Surrounded by beautiful native bush, these chalets offer peace and seclusion.

Meals included: Breakfast, Lunch



Day 18



Marahau to Picton

The drive takes you through the city of Nelson and along the coast of Tasman Bay towards the Bryant Range. The highway between Nelson and Picton also crosses the Pelorus River and just at this junction is the famous and historic Pelorus Bridge. From here there are a number of forest walks with the most popular the 30 minute loop through beech, rimu and totara forest to the swing-bridge.

Starting in the town of Havelock the Queen Charlotte Drive travels the Marlborough Sounds coastline towards the port town of Picton.

Magnificent views of the sounds can be had from many vantage points so allow plenty of time to enjoy the scenery. If you can spare the time take the narrow windy road to Portage along Mahau Sound and Kenepuru Sound with their bush clad hillsides and secluded sandy coves.

Arrive in the busy port town of Picton, and it's here that the Interislander ferries arrive and depart. The small town centre has plenty of shops and cafes and the waterfront area is a very pleasant place to spend a few hours watching the activity of the ships. The Edwin Fox Maritime Centre on the wharf is worth a visit with the star attraction being the vessel the Edwin Fox, reputedly the 9th oldest ship in the world.

Interislander Ferry Picton to Wellington

The 92 km journey between Picton and Wellington takes around 3 hours and has been described as 'one of the most beautiful ferry rides in the world'. Around one hour of the cruise takes you through the Marlborough Sounds. This region of bush covered mountains, small islands, crystal clear waters and secluded bays offer remarkable photographic opportunities.

From the Cook Strait, spectacular views of the Kaikoura Ranges on the South Island can be enjoyed and often dolphins and sea birds are seen. After crossing the strait you approach Wellington Harbour and pass many interesting points such as Pencarrow Head on top of which is New Zealand's oldest lighthouse (1859). Red Rocks is home to a seal colony and Oterangi Bay is the site which recorded the country's highest ever wind speed of 268 kph (167 mph).

Collect your rental car

This tour can be priced with any of the rental cars available in our fantastic range, from economy hatchbacks to prestige saloons and SUV's.

Your accommodation: Bolton Hotel Wellington

The Bolton Hotel offers contemporary apartment-style accommodation in the heart of Wellington. Just steps from the Parliament buildings and central business district, Bolton Hotel is conveniently close to the best of the city's shops, cafes and restaurants and is within walking distance of Wellington's vibrant waterfront.

Meals included: Breakfast



Day 19



Wellington City

Wellington home to New Zealand's centre of government has a largely cosmopolitan feel. Often referred to as 'mini Melbourne', this (self-described) windy city is a melting pot of art, culture, food, and fashion. Quirky laneway bars, underground art shows, and hipster eateries make up its inner-city vibe, while a host of sandy beaches outside the urban bustle bring a cheerful holiday feel.

Head to Te Papa Museum for a history lesson and a ticket to one of its many international exhibitions or jump aboard the Wellington Cable Car at Lambton Quay - the only running funicular railway in the country. For those with an eye for boutique, fashion wander through Cuba St to sample some of the city's best vintage stores. Break for coffee at a hipster cafe and be sure to snap a pic outside the 'Beehive', New Zealand's parliamentary debate chamber.

Go behind the scenes at Weta Workshop Experience, the Oscar Award Winning design studio behind Lord Of The Rings, The Hobbit, and Avatar. If you're a foodie at heart, a two-hour round trip to Martinborough is a must-do. Take your time as you wind through spectacular wine country, and be sure to stop in at Martinborough Wines or Ata Rangi Martinborough. For an educational day out, learn about New Zealand's native species at Zealandia, the world's first fully-fenced eco-sanctuary and home to over 40 types of endangered and native birds.

SUGGESTED ACTIVITY - Wellington Half Day Tour

Witness the best sights of New Zealand's capital city up close and personal, before experiencing the beauty of the coastline that surrounds central Wellington and its harbour. On this tour, you will head for the hills of Mt Victoria to witness the stunning landscape of Wellington and its harbour below. You will then follow the coastline round to the Weta Cave Museum, which is the showpiece of Peter Jackson's film empire. After a drive around the south coast, you will head back into the city for a ride on the Cable Car and a walk around the lady Norwood rose gardens. The tour concludes with a visit to the Beehive and our Parliament buildings.

SUGGESTED ACTIVITY - Wētā Workshop Experience + Guided Transfers

Get the full experience to Wētā Workshop and back with a guided transfer. Also, bag some other cool perks that will make your experience extra special. Learn about the real props, costumes and creatures created for your favourite films. Interact with cool stuff from the Weta workshop creative departments and catch an artist at work on the tour stage. Discover the filmmaking technique of miniature effects and learn how they are built for hit TV and film productions. Get up close to the props, weapons and costumes created for The Lord of the Rings, Power Rangers, The Great Wall, Avatar, District 9, and more.

Zealandia By Night Wildlife Sanctuary Tour

Taking a night tour of Zealandia wildlife eco-sanctuary is an unforgettable experience and one that comes highly recommended. A conservation success and safe haven for some of New Zealand's rarest native animals, Zealandia is home to many remarkable species of birds, reptiles and insects living wild within a beautiful 225 hectare (one square mile) valley, just 10 minutes from the central city.

Your tour begins with an interactive exhibition before you walk through the gates of Zealandia predator-exclusion fence into the sanctuary. Your guide will then lead you on a torch-light walk through the native New Zealand bush. Possible sights include Kiwi foraging on the forest floor, tuatara hunting for food, glowworms shining, tiny Maud Island frogs in their enclosure, pateke (brown teal) ducks feeding at night and kaka (parrots) coming in to roost. Zealandia is one of the best places to see kiwi in the wild. Over 100 of these nocturnal birds live freely in their natural environment inside the safety of the sanctuary valley, so your chances of seeing one are high!

Your accommodation: Bolton Hotel Wellington

The Bolton Hotel offers contemporary apartment-style accommodation in the heart of Wellington. Just steps from the Parliament buildings and central business district, Bolton Hotel is conveniently close to the best of the city's shops, cafes and restaurants and is within walking distance of Wellington's vibrant waterfront.

Meals included: Breakfast



Day 20



Wellington to Napier

Leaving Wellington today you will first pass the Wairarapa on the eastern side of the Rimutaka Ranges. A significant contrast to the hills of Wellington, it's rich pastures and boutique vineyards of Martinborough give way to grassy plains and rugged coastal shores. Go through Greytown, home to the largest number of wooden buildings in the country then stop in Masterton, a small farming town known for its Golden Shears competition - where shearers compete for the title of fastest shearer. Continue on to Hawkes Bay and Havelock North before arriving in Napier, the art deco capital of New Zealand.

Walking tracks in and around Hawkes Bay

There are some excellent walks in and around the Hawkes Bay region. The information below is provided by the Department of Conservation. Listed below are a selection of short walks but check with the Department of Conservation information centre for weather conditions, track suitability and conditions first. Tangoio Falls Scenic Reserve Tracks

Discover Te Ana or Tangoio Falls on a short, easy walk suitable for kids, or take a longer walk through native bush on the Tangoio Walkway. . Distance: 2 - 4.4 km one way. Completion Time: 30 minutes to 2 hours depending on which track you choose.

White Pine Bush Scenic Reserve

Experience New Zealand's remaining coastal forest on these short, easy walks that are good for children.

Distance: 1.6 km loop. Completion Time: 40 minutes.

Ahuriri Estuary

View a community of wading birds, fish, mud dwellers and aquatic plant life from the estuary track and boardwalk. Over 70 species of resident and migratory waterbirds use the estuary as a feeding and resting area.

Distance: 2.8 km one way. Completion Time: 1 hour.

Te Mata Park

Te Mata Park has a rich human and geological history, and is home to a range of unique plants and native birds. The park has five different walking options varying in difficulty and distance.

Distance: 1.3 km - 5.4 km. Completion Time: 40 minutes - 1 hours 15 minutes.

Lake Tūtira

There are two main walks at Lake Tūtira, a short walk along the edge of the lake or a longer loop through the reserve. Both offer great views of the lake as well as native and introduced plant species.

Distance: 1.3 km - 5.4 km. Completion Time: 40 minutes - 1 hours 15 minutes.

Cape Kidnappers/Te Kauwae-a-Māui Walking Track

Follow the beach from Clifton to Cape Kidnappers/Te Kauwae-a-Māui alongside cliffs that show fragmented fault and tilt lines, recording the gradual rise of New Zealand. Black Reef is the first gannet nesting site, 7.5 km from Clifton. A 1 km climb takes you from the shelter on the beach to a benched area on the hill where you can view the second colony, and spectacular views of Hawke's Bay.

Distance: 19 km loop. Completion Time: 5 hour return.

SUGGESTED ACTIVITY - Triple Chocolate Dipper Tour with the Silky Oak Chocolate Company

A true chocolate indulgence combining chocolate tasting at Silky Oak Chocolate factory shop, entry into the Chocolate "Thru' the Ages" Museum, a Chocolate drink (or tea/coffee), chocolate muffin/ slice, served with liquid chocolate and cream at their Cafe. You'll be presented with a bonus take-home gift - chocolate of course! This is chocolate overload for serious chocoholics!

Your accommodation: McHardy Lodge

This beautifully restored, single storey 1890's residence is nestled in a quiet cul de sac on Napier Hill, a great location from which to explore the Art Deco city. Experience a 5 star boutique Bed & Breakfast experience with unparalleled facilities and luxurious rooms.

Meals included: Breakfast



Day 21



Napier City

Napier, the city by the sea, is renowned for its 1930s Art Deco architecture, events such as the Art Deco Weekend in February, stately Norfolk pines, surrounding wineries and local fresh produce. Supported by a Mediterranean climate and over 2,200 hours of sunshine a year this popular year-round destination boasts a vibrant cafe culture amongst the splendour of the Art Deco buildings.

Around 30 cafes are within walking distance of the central city area, while Ahuriri, just over Bluff Hill, is home to a further cluster of up market establishments. Marine Parade overlooks the Pacific Ocean and out towards Cape Kidnappers, home to the world's largest mainland gannet colony. A full day can be taken visiting Ocean Spa hot pools and swimming complex, the Hawke's Bay Museum and the National Aquarium of New Zealand.

A landmark of Napier is Bluff Hill, which is home to many Napier residents and provides views of the town, beaches of Perfume Point and Westshore and out towards Whirinaki. Bluff Hill also overlooks the Port of Napier, one of New Zealand's busiest ports, transporting timber, local fruit and meat products to worldwide destinations.

In 1931, New Zealand's greatest natural disaster struck Hawke's Bay. At 10.47am on Tuesday February 3rd, an earthquake of magnitude Richter 7.8 struck. In a minute and a half, in two separate shocks, the centre of Napier was almost totally destroyed. Fires quickly broke out and reduced to ashes or gutted what the tremors had left standing. Damage in Hastings was also devastating, although the fires were contained. Wairoa and the smaller towns to the south as far as Dannevirke were affected. There were 258 deaths - 162 in Napier, 93 in Hastings and 3 in Wairoa along with many injuries. The reconstruction of Napier and Hastings was costly but the benefit was two modern cities and the Ahuriri Lagoon, or Inner Harbour as it was usually known, was raised over 2 metres, creating the land, which Napier desperately needed to expand.

Explore Napier and the Hawke's Bay

With its Mediterranean climate and Art Deco style, Hawke's Bay is an attractive holiday prospect. As the nation's first winemaking region, a visit to one of its 30 wineries is a must. A trip to Mission Estate touted as the birthplace of NZ wine can't be missed. For the truly enthused head out on a tour of the vines. Those into Gatsby will enjoy the chance to view prominent Art Deco landmarks on a 1930s Vintage Car Tour. Passengers will spend just over an hour learning about the history of the city's architecture including the Napier Municipal Theatre, one of the top ten Art Deco Buildings in the world. If you're after some fresh air, hire a bike and take your pick of one of over 200km of cycling trails or head on down to one of the many beaches that ring the area. Ocean or Waimarama beach are good choices and both are patrolled by surf lifeguards during the summer. Indulge in some local produce and head out on a cheese, chocolate, honey or orchard tour.

SUGGESTED ACTIVITY - Gannet Safaris

Drive along the scenic coast from Napier to Te Awanga and join Gannet Safaris Overland and the world's largest, most accessible gannet colony at Cape Kidnappers. Gannet Safaris has been guiding visitors over Cape Kidnappers for over 35 years and their safaris are the only way to be driven right to within a few feet of these remarkable birds. You will travel in comfort in air-conditioned 4 x 4 wheeled vehicles, through Cape Kidnappers Station - traversing riverbeds, broad rolling pastures, stands of native bush, steep gullies and breath-taking inclines. There is a stop on the way at a spectacular cliff top with panoramic views of Hawke Bay right across to Mahia peninsular. The 36km, three hour trip includes a commentary by your tour guide/driver on the farming operation on Cape Kidnappers Station and an introduction to the gannets. On arrival at the gannets you can stretch your legs and take in the scenery from your position at the brink of the cliff's edge, 100 metres above the ocean!

SUGGESTED ACTIVITY - Hawkes Bay Wine and Dine Tour with Grape Escape

Experience a fun-filled Grape Escape wine and dine tour in the sun driving through absolutely stunning scenery. Meet like-minded people and share an appreciation of this region's fantastic wine. We visit four to five boutique wineries. Later, we enjoy a light cheese platter on the grounds of Ngatarawa or Sileni, weather dependent. You will taste around 30 different wines along with the main varieties, including Merlot, Syrah, Chardonnay, Sauvignon Blanc, Pinot Gris, Viognier, and lesser-known aromatics such as Cabernet Franc, Gewurztraminer, and Riesling.

Your accommodation: McHardy Lodge

This beautifully restored, single storey 1890's residence is nestled in a quiet cul de sac on Napier Hill, a great location from which to explore the Art Deco city. Experience a 5 star boutique Bed & Breakfast experience with unparalleled facilities and luxurious rooms.

Meals included: Breakfast



Day 22



Napier to Rotorua

Cross the Ahiminawa Ranges to arrive into the town of Taupo which is situated on New Zealand's largest lake, Lake Taupo a gigantic volcanic caldera formed during one of the worlds largest eruptions. Just north of Taupo are the Huka Falls, an impressive body of water draining from the Waikato river. See it from the wooden viewing platform or get up close to the spray with a ride on the Huka Jet. Visit nearby volcanic reserve Craters of the Moon to see boiling pools and steaming vents. Continue on through the Waimungu Valley before arriving into geothermal Rotorua, the heart of New Zealands Maori culture.

SUGGESTED ACTIVITY - Te Pō - Indigenous Evening Experience

Indulge in Te Puia's world-famous hāngī buffet dinner, served in the inviting atmosphere of Pātaka Kai Restaurant, Bar & Café. The menu, crafted with the freshest ingredients, offers a delightful array of traditional Māori cuisine, This banquet combines contemporary cuisine with a traditional hangi (earth-cooked oven meal). The evening's cultural performance will take place in an exquisitely carved meeting house, Te Aronui a Rua. Here, you'll experience a rich showcase of Māori traditions, beginning with a pōhiri (traditional welcome), followed by the melodious harmonies of waiata (song), the powerful rhythms of mōteatea (traditional chant), the graceful artistry of poi, and the intense energy of the haka. As the night draws to a close, savor hot chocolate heated in geothermal water and steamed pudding while basking in the enchanting ambiance of the geyser terrace. Bathed in colored light and surrounded by the mystical steam rising from the earth, this unforgettable evening at Te Puia is a feast for the senses and a celebration of Māori culture.

Your accommodation: Pullman Rotorua

Pullman Rotorua is surrounded by surreal scenery and iconic attractions. Discover shooting geysers, bubbling mud, natural hot springs and magical forests.

Meals included: Breakfast



Day 23



Orakei Korako Hidden Valley with Volcanic Air Safaris by floatplane

From above Mount Tarawera impressive views include vast volcanic rifts, distant national parks and our treasured lakes. Flying south on a floatplane, you will gain an appreciation of what local Maori refer to as the 'Sisters of Fire'. Here, volcanic activity has pierced the earth surface across the fault-line forming the reserves of Waimangu and Wai-O-Tapu which, when viewed from above, display a spectacular palette of nature's most vibrant colours. Landing at Orakei Korako, 'the Hidden Valley', is an amazing opportunity to experience hot springs, gushing geysers and the natural beauty of this geothermal wonderland.

SUGGESTED ACTIVITY - Wai-O-Tapu Thermal Wonderland

Wai-O-Tapu Thermal Wonderland is a spectacular showcase of New Zealand's most colourful and unique geothermal elements sculpted by thousands of years of volcanic activity. You are introduced to a uniquely different natural landscape – the key to what you see lies below the surface – one of the most extensive geothermal systems in New Zealand, extending over 18-sq. km. Enjoy viewing unique volcanic features as you walk at your own pace along well-defined tracks. Relax in the first-class Visitor Centre, home to the Gift Shop and Café facilities. Visit the Mud Pool, the largest in New Zealand, it was originally the site of a large mud volcano which was destroyed through erosion in the 1920s. See the history and beauty of the Lady Knox Geyser at 10:15 am every day. Lady Knox Geyser provides a unique opportunity to see an eruption to heights of 10 to 20 metres.

Your accommodation: Pullman Rotorua

Pullman Rotorua is surrounded by surreal scenery and iconic attractions. Discover shooting geysers, bubbling mud, natural hot springs and magical forests.

Meals included: Breakfast



Day 24



Rotorua to Hahei

Pyes Pa Road is the scenic route towards the Bay of Plenty and the town of Tauranga before heading north along the coast towards the first of the Coromandel towns, Waihi. This old mining town still has an operating open cast gold mine and you can view the workings of the Martha Mine from a vantage point signposted from the town centre. For rail enthusiasts the Goldfields Railway operates passenger trains along a scenic and historic section of track towards Waikino. Next the popular locals holiday destination of Whangamata with its golden beaches and surf. Tairua is also a great location and Paku Hill offers spectacular views over the natural harbour and the Pacific Ocean. Close by is the famous Hot Water Beach where you can dig your own hot pool on the beach during low tide. A short drive from Hot Water Beach you reach the holiday village of Hahei, with its long white sandy beach. Nearby Cathedral Cove is a popular day walk, taking you to a secluded golden beach with massive limestone formations.

Your accommodation: Hahei Bed & Breakfast

Hahei Bed & Breakfast, you will be able to look forward to quiet surroundings, large swimming pool and subtropical gardens. Relax into this idyllic environment, and prepare for the perfect beach holiday! You'll be able to enjoy the comfort of this peaceful, fresh-styled property.

Meals included: Breakfast



Day 25



Hahei to Auckland via Coromandel township

Heading north along the east coast you pass through the town of Whitianga and from here you can take the small foot ferry over to Cooks Beach and Flaxmill Bay. Mercury Bay was named by Captain Cook on one of his voyages as he stopped here to engage in some astronomy. Continue north along the beaches of Kuaotuna and Whangapoua Harbour to Coromandel Township, whose history is steeped with the gold rush of the late 1800's and the pioneers and settlers of the day. Today there are still known deposits of gold, silver, lead and zinc throughout the ranges but residents and conservationists are unlikely to allow any form of exploitation of the region. Remote towns, isolated bays and a rich history of pioneers and fortune hunters make this one of the more diverse regions to explore. The west coast of the peninsula drops to the Firth of Thames with steep pohutukawa clad cliffs while the east coast has an abundance of golden sand beaches and inlets. On the other side of the Firth of Thames is Miranda and this out of the way spot is a haven for shorebirds. R.B. Simpson discovered in 1940 that Miranda was a feeding ground for large numbers of wading birds. Since then ornithological societies have censused the numbers and found that 5-6,000 lesser knots and 7-10, 000 bar tailed godwits travel here during the summer months before departing to the Siberian and Alaskan feeding grounds. In addition over 20, 000 South Island pied oystercatchers and 300 wrybills spend the summer months here after breeding the South Island. Many more birds can also be found here and the Miranda Shorebirds Centre has lectures and displays. The shoreline of Miranda itself is also very unique and is considered the finest example in the world of an active sand and chenier plain. The Hunua ranges to the east mark the original shoreline about 4000 years ago and since then continuous tidal and wind action has deposited shell ridges to form the land or coastal plain you see today. The drive to Auckland now takes you through the Hauraki Plains, a very fertile dairy farming region and then State Highway 1 delivers you to Auckland City.

Driving Creek Railway & Potteries - EyeFull Tower Tour

Driving Creek Railway and Potteries has become a Coromandel icon. The dream of Barry Brickell was to establish a pottery workshop on his land. Using a railway he would have access to the clay on the land and the pine kiln fuel. Over the next 15 years the railway developed until in 1990 it was finally licensed to carry fare paying passengers and ever since thousands of visitors have made the trip to Coromandel to experience this unique attraction. The 1 hour return train trip on the innovatively designed trains takes you through replanted native kauri forest and includes 2 spirals, 3 short tunnels, 5 reversing points and several large viaducts as it climbs up to the mountain-top terminus. The pottery is still producing and you can watch the artists at work as well as purchase items. It is important you read and understand the risks associated with this activity. For more information please see [here](#).

Your accommodation: Airedale Boutique Suites

Airedale Boutique Suites Auckland is located on a landmark site on Queen Street in the heart of Auckland City. This superb art deco style hotel is conveniently located in the city's vibrant cultural, shopping and central business district.

Meals included: Breakfast



Day 26



Auckland to Paihia, Bay of Islands

The trip from Auckland to the Bay Of Islands takes around 3.5 hours but give yourself some leeway for stops and sightseeing. As you go through Puhoi, take in the bohemian atmosphere of this historical township. Stop for a breath of fresh salty air in Whangarei and take another break at Kawakawa, home to the world famous Hundertwasser toilets. Enjoy the native bush surrounds and marvel at the endless golden beaches as you arrive into central Bay Of The Islands, Paihia.

Your accommodation: Arcadia Lodge, Russell

Arcadia Lodge is a Russell landmark, a turn of the century home and luxury bed and breakfast overlooking Russell's tranquil Matauwhi Bay.

Meals included: Breakfast



Day 27



Hole in the Rock Cruise with Fullers GreatSights

Board your cruise and take in the stunning views as you glide out through the islands and along the Rakaumangamanga Peninsula to Cape Brett, where a historic lighthouse keeps watch over and Piercy Island/Motukōkako, or as it is popularly known as the Hole in the Rock. According to Māori legend, local warriors used to paddle through the Hole in the Rock in their canoes before departing for battle. Drops of water from the cave roof above were a good omen. If conditions permit, your skipper will expertly guide the ship through the narrow space. Keep an eye out for common and bottlenose dolphins, whales, and other marine life during your cruise, and have your camera ready as you get up close to the action. Stop off at Otehei Bay on Urupukapuka Island where you have time to relax, take a walk, have a swim, or enjoy a bite to eat and drink from the on-site fully licensed cafe. The purpose-built catamaran is licensed by DOC (the Department of Conservation) for dolphin viewing and the crew has years of experience locating dolphins in these waters.

Explore the Bay of Islands

Commonly known as the 'winterless north', New Zealand's Bay of Islands is made up of over 140 subtropical atolls. Renowned for its untouched beaches, abundant marine life and idyllic climate, this tropical paradise ticks all the boxes. Spend some time on a remote stretch of beach, or see the dolphins on an ocean safari. If diving is your thing, take the morning to descend the Rainbow Warrior - The Greenpeace flagship sunk by French saboteurs in 1985. Wander around Russell, a whaling port founded in 1843. Learn about our culture in historic Waitangi, the site where The Treaty of Waitangi was signed in 1840 between the Maori and European settlers dictating the terms by which New Zealand would become a British colony. Alternatively you may like to take a day tour to Cape Reinga, the very top of the North Island.

Your accommodation: Arcadia Lodge, Russell

Arcadia Lodge is a Russell landmark, a turn of the century home and luxury bed and breakfast overlooking Russell's tranquil Matauwhi Bay.

Meals included: Breakfast



Day 28



Cape Reinga Scenic Aeroplane Flight and Guided Tour

Today experience the beauty of the North from both air and land. Take a spectacular scenic flight to Cape Reinga over Whangaroa Harbour and the Rangaunu Harbour as well as Coopers Beach, Doubtless Bay and Ninety Mile Beach. The tour also includes a visit to the Cape Reinga lighthouse.

Your accommodation: Arcadia Lodge, Russell

Arcadia Lodge is a Russell landmark, a turn of the century home and luxury bed and breakfast overlooking Russell's tranquil Matauwhi Bay.

Meals included: Breakfast



Day 29



Bay of Islands (Paihia) to Auckland via Waipoua Forest

Today you will leave the Bay of Islands for a scenic return trip to Auckland. Head west, leaving the Pacific Ocean for the wilder seas of the Tasman and Hokianga. Go through the small townships of Omapere and Opononi, each with a great seaside feel.

Your route now goes south through Waipoua Forest, home to the largest and oldest Kauri trees in the country. Make sure you allow time for several of the signposted short walks as you pass - not to be missed is the five minute loop to view the largest of all the trees - Tane Mahuta. As you make your way back down the country you'll pass the Matakoho Kauri Museum with extensive displays on the region's logging, farming and social history. Continuing on, go through Warkworth and the bohemian settlement of Puhoi before crossing the harbour bridge to arrive in Auckland city.

Your accommodation: Airedale Boutique Suites

Airedale Boutique Suites Auckland is located on a landmark site on Queen Street in the heart of Auckland City. This superb art deco style hotel is conveniently located in the city's vibrant cultural, shopping and central business district.

Meals included: Breakfast



Day 30



Explore Auckland City

Perched on the edge of a large natural harbour, New Zealand's 'City of Sails' offers the best of both worlds. Sandy beaches, native bush and lush rainforests give way to a vibrant urban culture, humming with life. Spend time in the Viaduct Harbour, try your hand at sailing an America's Cup yacht or take the ferry to nearby Waiheke Island for a gourmet food and wine experience.

If you're looking for a lovely hike, walk (if you're that way inclined) to the top of Auckland's highest volcano, Mt Eden, and take in soaring views of the gulf. Immerse yourself in nature's beauty at the expansive Auckland Botanic Gardens, sprawled across 156 acres of lush land and native forest on Hill Road. Pack a picnic, soak up the sunshine, and delight in the melodious birdsong during a peaceful lunch. Head up the Sky Tower, standing at just over 300m tall (about 1,000 feet) and have a meal in the 360 degree revolving restaurant. Scale the outermost perimeter of the Harbour Bridge or test your stomach and bungy off both. To end your day, catch a cab to Ponsonby Road and sample some upmarket culinary delights.

SUGGESTED ACTIVITY - Auckland Wine Country Half Day Tour including Lunch with Bush and Beach

Today you'll be leaving the city and heading north-west to Kumeu Wine Country, Auckland's Heritage Wine Region. Enjoy lunch at a contemporary vineyard, sample world-renowned wines and marvel at the rugged surf-fringed coastline nearby. Your first stop is award-winning Soljans Estate Winery. Utilising both traditional and modern techniques, Soljans produce varied and richly flavoured wines. Built with sunshine in mind and a distinct Mediterranean-style, the onsite restaurant showcases fresh seasonal produce from around the region. Continuing on, you'll visit Muriwai Beach home to a Gannet Colony. Situated on the cliffs overlooking the Tasman sea you'll have breathtaking views of the beach and ocean beyond as you observe one of the largest seabirds, the gannet, in their natural environment. Your final tasting is at West Brook Winery, one of New Zealand's oldest. These wines reflect true varietal character and their unique regional origins.

SUGGESTED ACTIVITY - America's Cup Sailing Experience with Explore

Participate as crew on an authentic America's Cup yacht. Take the helm, exert energy on the grinders or sit back and enjoy the action and scenery as you sail the beautiful Waitemata Harbour. Experience the excitement of sailing, no experience necessary. Feel the thrill of the wind in your face as you tack and jibe. These powerful and highly engineered race vessels are usually the domain of billionaires and elite professional yachties but this unique two-hour sailing experience offers everyone the opportunity to sail these Grand Prix racing machines. America's Cup is the world's oldest and most prestigious sporting trophy and ultimate yachting regatta. Experience it first hand sailing these remarkable vessels on the harbour that hosted the America's Cup in 2000 and 2003.

Your accommodation: Airedale Boutique Suites

Airedale Boutique Suites Auckland is located on a landmark site on Queen Street in the heart of Auckland City. This superb art deco style hotel is conveniently located in the city's vibrant cultural, shopping and central business district.

Meals included: Breakfast



Day 31

Depart Auckland today

Explore more of vibrant Auckland city before dropping your rental car at the airport depot and continuing your onward journey.

Tour details

| | |
|---------------------|--------------------------|
| Departures: | Daily |
| Tour type: | Nationwide Self Drive |
| Starts: | Christchurch |
| Finishes: | Auckland |
| Tour length: | 31 |
| Accommodation: | Boutique Lodges & Hotels |
| Car/transport type: | |

Included activities

| | |
|----------|---|
| Includes | All breakfasts |
| Includes | Private train station transfers |
| Includes | Private airport transfers |
| Includes | Interislander ferry crossing |
| Includes | TranzAlpine Train from Greymouth to Christchurch |
| Includes | Cape Reinga Fly and Drive Tour |
| Includes | Discover the Bay Hole in the Rock cruise |
| Includes | Orakei Korako Hidden Valley by floatplane |
| Includes | Driving Creek Railway, Coromendal |
| Includes | Napier City Whirlwind Tour |
| Includes | Twilight Odyssey Progressive Dinner and Winery Tour |
| Includes | Zealandia Wildlife Sanctuary Night Tour, Wellington |
| Includes | Abel Tasman National Park kayak, seals and walk tour |
| Includes | Whale Watch Kaikoura tour |
| Includes | Glacier Explorers Tour, Mt Cook National Park |
| Includes | Wildlife cruise and Yellow eyed penguin colony, Dunedin |
| Includes | TSS Earnslaw cruise and dinner at Walter Peak high country farm, Queenstown |
| Includes | Dart River Wilderness Safari, Glenorchy |
| Includes | Lake Wanaka Cruise and Island Nature Walk |
| Includes | Doubtful Sound Overnight Cruise |
| Includes | Franz Josef Glacier heli-hike |

Accommodation summary

| | |
|--------|--|
| Day 1 | Orari Apartments |
| Day 2 | Hermitage Hotel, Aoraki Wing Premium |
| Day 3 | Fable Dunedin |
| Day 4 | Fable Dunedin |
| Day 5 | Te Anau Lodge |
| Day 6 | Fiordland Navigator Overnight Boat in Doubtful Sound |
| Day 7 | The Dairy Private Hotel by Naumi |
| Day 8 | The Dairy Private Hotel by Naumi |
| Day 9 | The Dairy Private Hotel by Naumi |
| Day 10 | Tin Tub Luxury Lodge |
| Day 11 | Westwood Lodge |
| Day 12 | Westwood Lodge |
| Day 13 | Orari Apartments |
| Day 14 | Bendamere House B&B |

| | |
|--------|---|
| Day 15 | Marlborough Bed & Breakfast at Woodside |
| Day 16 | Kimi Ora Eco Resort |
| Day 17 | Kimi Ora Eco Resort |
| Day 18 | Bolton Hotel Wellington |
| Day 19 | Bolton Hotel Wellington |
| Day 20 | McHardy Lodge |
| Day 21 | McHardy Lodge |
| Day 22 | Pullman Rotorua |
| Day 23 | Pullman Rotorua |
| Day 24 | Hahei Bed & Breakfast |
| Day 25 | Airedale Boutique Suites |
| Day 26 | Arcadia Lodge, Russell |
| Day 27 | Arcadia Lodge, Russell |
| Day 28 | Arcadia Lodge, Russell |
| Day 29 | Airedale Boutique Suites |
| Day 30 | Airedale Boutique Suites |