



## 8 Day Southern Highlights Tour

This short South Island highlights tour takes you through the countryside of Canterbury, Otago, Southland and the West Coast. Along the way you'll pass alpine lakes, enjoy views of the Southern Alps, explore the historic city of Dunedin and ride the world famous Tranz Alpine Scenic Train.

Starts in: Queenstown  
Finishes in: Queenstown  
Length: 8days / 7nights  
Accommodation: Boutique Lodges & Hotels  
Can be customised: Yes

This itinerary can be customised to suit you perfectly. We can add more days, remove days, change accommodations, mix it up, add activities to suit your interests or simply design and create something from scratch. Call us today to get your custom New Zealand itinerary underway.



### Inclusions:

Includes: Late model rental cars  
Includes: Fully inclusive rental car insurance (excess may apply)  
Includes: Unlimited kms  
Includes: Afterhours emergency support while touring  
Included activity: Private Transfer Queenstown Airport to your Accommodation  
Included activity: Electronic Travel Guide and In-Country Support App  
Included activity: TranzAlpine Scenic Train: Greymouth to Christchurch  
Included activity: Shared Transfer from Christchurch Train Station to Christchurch CBD  
Accommodation with Christchurch Touring Company  
Included activity: Dinner at Camp Estate, Larnach Castle  
7 breakfasts, 1 special dinner

## Day 1



### Private Transfer Queenstown Airport to your Accommodation

On arrival you will be met by a private driver and delivered to your Queenstown accommodation.

### Welcome to Queenstown

Renowned for its adrenaline inducing activities Queenstown is synonymous with adventure. Parked on the shores of Lake Wakatipu this small alpine town is nestled below soaring vistas of The Remarkables Mountain Range. While arguably the brightest gem in New Zealand's crown, Queenstown offers far more than an action-packed getaway. Spend time on the Gibbston wine trail and end with a meal at Michelin star chef Josh Emett's restaurant, Rata. Take a trip down memory lane on a 100 year old steamship the TSS Earnslaw. Soak in the scenery on your walk around the lake, or venture further afield into Fiordland National Park. Head over the hill to resort town Wanaka, or re-live scenes from Lord Of The Rings by four wheel drive. But - if you really do want that rush - head out on the Shotover Jet, dive off the Nevis Bungy, freefall on the Canyon swing or Zip line the Gondola. Just be sure it's done on an empty stomach – don't say we didn't warn you!

### SUGGESTED ACTIVITY - Gondola and 3 Luge Rides with Skyline Queenstown

In the heart of Queenstown, located 450 metres above town in the Ben Lomond Scenic Reserve is the Skyline Complex. A gondola ride to the summit makes for awe-inspiring views of the city surround. Arrive at the complex and wander the outside viewing decks for a picture perfect outlook. Then onto the Luge! The 800 metre luge track offers an exhilarating journey through banked corners, tunnels and dippers.

### Your accommodation: The Dairy Private Hotel by Naumi

The Dairy Private Hotel – a unique blend of exquisite design, rich history and warm hospitality in the city centre. Beginning as Queenstown's original 'dairy' (corner store) in 1920, it has now transformed into an interiors masterpiece after an exquisite refurbishment that features wallpapers from British luxury interiors brand House of Hackney.



## Day 2



### Collect Rental Car

Choose a car to best suit your needs from our fantastic rental car range. From compact economy, hatchbacks to prestige SUVs.

### Queenstown to Franz Josef Glacier via Wānaka

From Queenstown you'll cross the Crown Range, the highest sealed road in New Zealand to arrive in the Alpine town of Wānaka, gateway to Mt Aspiring National Park. Skirting the shores of both Lake Wanaka and Hawea, you will enter the small town of Makarora. Stop at Blue Pools for a 1-hour return walk through the native beech forest to a glacier-fed swimming hole. Continue on through the remote seaside settlement of Haast before heading up the wild West Coast highway you pass through ancient temperate rainforests while getting sneak peeks of the wild coast beaches occasionally. Paringa Salmon Farm is worth a stop to stretch your legs, feed the fish, and stop for lunch and refreshments. Keep heading North and be sure to enjoy the view of the ever-changing towering snowcapped Southern Alps Mountain Range. Fox Glacier welcomes you first, then comes your destination for the night Franz Josef township.

### SUGGESTED ACTIVITY - Twin Glacier Scenic Helicopter Flight with The Helicopter Line

A spectacular scenic flight soaring over two of New Zealand's most famous glaciers, Fox and Franz Josef. Landing at the head of one and view the incredible sight of this frozen river as it winds its way through ancient carved valleys.

### Your accommodation: Westwood Lodge

Westwood is a purpose built lodge, crafted entirely from wood and exquisitely decorated throughout. The lounge is the place to meet to watch the Southern Alps turn a soft pink in the setting sun.

Meals included: Breakfast



---

## Day 3



### Franz Josef to Greymouth Train Station

Head north along the mighty West Coast highway you pass through ancient temperate rainforests while getting sneak peeks of the wild coast beach occasionally. Whataroa is the next town where you can see one of the world's rarest birds, the Kōtuku - White Heron. The Kōtuku nest at the Waitangi Roto Nature Reserve, only accessible with a guided tour from October to March. The next town is Ross which is the site of an old gold mining settlement where the local information centre offers you the chance to pan for gold. Hokitika is a great place to explore craft and gift stores and head to the coast and take in the endless sea views. The Pounamu-Greenstone on offer in Hokitika is probably some of the best you will see in the country. Continue on to Greymouth, the largest town on the West Coast and the starting point for the next leg of your journey the TranzAlpine Scenic Train. Drop your rental car at the Greymouth Train Station depot located at the train station building before boarding your train to Christchurch.

---

### TranzAlpine Scenic Train: Greymouth to Christchurch

Considered one of the world's great train journeys, the TranzAlpine Scenic Train takes you from Greymouth to Christchurch. Travel across the South Island from the west to the east coast through Arthur's Pass National Park. From the comfort of your carriage see lush beech forest, deep river valleys and the spectacular peaks of the Southern Alps. Descend to the windswept Canterbury Plains before arriving in the city of Christchurch.

---

### Shared Transfer from Christchurch Train Station to Christchurch CBD Accommodation with Christchurch Touring Company

On arrival at the Christchurch railway station, you will be met by a driver and transferred to your Christchurch accommodation.

---

### Your accommodation: The Muse Christchurch

The Muse is a place where culture, business, and art come together. The hotel boasts a fusion of designer chic surroundings, expressive local art and luxurious comforts to provide each guest with a unique and exceptional experience during their stay. This is the ideal hotel for any purpose of visit and will pleasantly surprise even the most seasoned guest in Christchurch.

Meals included: Breakfast



---

## Day 4



### Collect Rental Car

Choose a car to best suit your needs from our fantastic rental car range. From compact economy, hatchbacks to prestige SUVs.&nbsp;

---

### Christchurch to Aoraki-Mt Cook National Park

Drive through the heart of the South Island, crossing the vast Canterbury plains. Catch your breath in Geraldine before continuing through Fairlie. Ascending Burkes pass you'll come to the picturesque town of Lake Tekapo. Follow the road and take in the view of Aoraki-Mt Cook (New Zealand's tallest mountain) from the shores of Lake Pukaki, known for its glacier fed turquoise blue colour. Continue along the lake to your final destination Aoraki-Mt Cook Village.



## SUGGESTED ACTIVITY - Glacier Explorers

Experience 500-year-old icebergs up close on the Aoraki-Mt Cook terminal lake. The Glacier Explorers tour is the only one of its kind in New Zealand and one of only three in the world! Very few glaciers terminate into lakes and even fewer of them are accessible. See towering ice cliffs and floating icebergs from the safety of a specially designed boat. These boats provide a safe way to view unseen and inaccessible areas of New Zealand's largest glacier The Tasman.

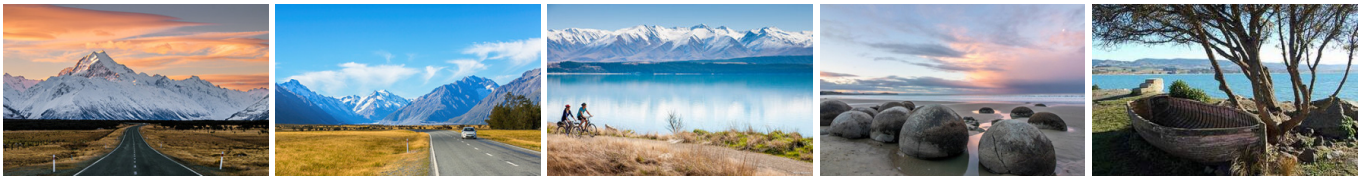
### Your accommodation: Hermitage Hotel, Aoraki Wing Premium

The Hermitage Hotel ringed by magnificent snow-capped peaks of the Southern Alps, is a world-renowned tourist destination and has been an icon of superior accommodation and dining since 1884.

Meals included: Breakfast



## Day 5



### Aoraki Mt Cook National Park to Dunedin

Leave Aoraki Mt Cook National Park and travel past Twizel, one of the locations for the Lord of the Rings films. Go through Omarama, the gliding capital of New Zealand. Continue down the Waitaki Valley follow the hydro power generating system towards the east coast. Stretch your legs in Oamaru, known for its white stone buildings constructed with the local Oamaru Stone and Steampunk influence. If you were a little late off the mark this morning you may get the chance to see the blue penguins come ashore at dusk. Continue south down the coast to Moeraki, and take a detour towards the beach to see the Moeraki Boulders, a unique geological feature well worth a look. As you arrive in Dunedin, take in the city's Edwardian and Scottish heritage reflected in the buildings around the city centre The Octagon.

### Dinner at Camp Estate, Larnach Castle

Keeping with the historical setting of Larnach Castle, a four-course dinner is offered in a grand Castle Dining Room. This is a trust-the-chef experience where you may indulge in incredible meals and meet other guests. The menu reflects local meats and vegetables, served in a traditional New Zealand-style cuisine with the opportunity to pair with regional wines.

## SUGGESTED ACTIVITY - Monarch Wildlife Cruise from Wellers Rock

An unforgettable experience viewing rare and fascinating wildlife. Board the Monarch Boat and take in the fascinating sight of the Northern Royal Albatross as it comes into nest on the spectacular cliffs of Taiaroa, Otago Peninsula. You'll also see eight other species of birds including sooty shearwaters and petrels as well as sea lions and fur seals and if you're lucky dolphins and whales.

### Your accommodation: Camp Estate at Larnach Castle

A luxurious country house built from blue stone and features a spectacular marble staircase. The modern rooms are all double glazed and the reception rooms are all heated by open fires and underfloor heating. Staying at Camp Estate includes entry to Larnach Castle and the grounds.

Meals included: Breakfast, Speciality Dinner



## Day 6



## Dunedin to Te Anau (via Invercargill)

The drive to Te Anau takes you through classic Southland farming scenery. Head off-the-beaten-track today and follow the coastline instead of the inland route. Go through The Catlins area and be sure to take a detour to Kaka Point to view its majestic cliffs and pounding surf. If time permits, keep driving towards Nugget Point, iconic for its steep headland with a lighthouse perched atop. Continue through Invercargill to Riverton and Colac Bay, and then head north to Manapouri. From here you can embark on a day or overnight cruise to the remote Doubtful Sound, renowned for its natural beauty. Just a short way further will bring you to your lakeside destination of Te Anau, gateway to Fiordland National Park and Milford Sound.

---

### SUGGESTED ACTIVITY - Te Anau Glowworm Caves with RealNZ

Begin your Te Anau Glowworm experience with a scenic cruise across Lake Te Anau on board the luxury catamaran, Luminosa, to the western side of the lake. On arrival, you'll enter the caves through Cavern House, where informative displays detail the history of this 12,000 year old underground network. You'll then explore by limestone pathway while your guide points out hidden whirlpools, sculpted rock formations, and a rushing underground waterfall. See a magical display of thousands of glowworms as you glide through the darkness in a small boat.

---

### Your accommodation: Dunluce Bed and Breakfast

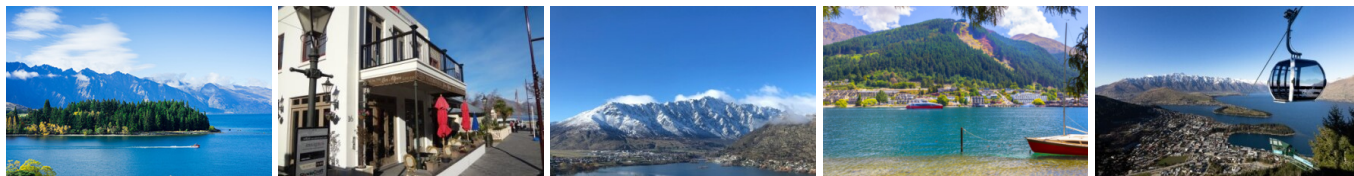
Dunluce offers boutique Bed and Breakfast accommodation with panoramic lake and mountain views. Situated in a quiet location Dunluce is an architecturally designed home with a private guest wing.

Meals included: Breakfast



---

## Day 7



### Te Anau to Queenstown

Journey across expansive tussock lands en route to Queenstown. Pass through Mossburn, renowned as the deer capital of New Zealand, and continue through the picturesque Southland countryside. As the road begins to trace the edge of Lake Wakatipu, marvel at the breathtaking views from the Devil's Staircase. Finally, approach Queenstown, the adventure capital of New Zealand, with the Remarkables mountain range standing majestically in the backdrop.

---

### SUGGESTED ACTIVITY - TSS Earnslaw Cruise and Walter Peak Gourmet BBQ Dinner

Enjoy a quintessential Kiwi experience, a delicious gourmet BBQ buffet meal, and a farm demonstration in a stunning lakeside setting. Take in the stunning views of Lake Wakatipu and its surroundings as you cruise across the lake to the historic Walter Peak high country farm aboard the TSS Earnslaw Steamship. Enjoy the ambiance of the heart of the stately homestead while your Colonel's Homestead Restaurant chef prepares a gourmet BBQ dinner. Your seasonal menu includes an extensive selection of local New Zealand produce, including succulent meats and a selection of delicious vegetables and salads. Complete your meal with your choice of delicious desserts, or New Zealand cheeses. After dinner, watch the farm dogs in action with a sheep-herding demonstration and say hello to the other farm animals. Finally, cruise home under the southern stars and enjoy the fresh night air as the lights of Queenstown draw ever closer.

---

### Your accommodation: The Dairy Private Hotel by Naumi

The Dairy Private Hotel – a unique blend of exquisite design, rich history and warm hospitality in the city centre. Beginning as Queenstown's original 'dairy' (corner store) in 1920, it has now transformed into an interiors masterpiece after an exquisite refurbishment that features wallpapers from British luxury interiors brand House of Hackney.

Meals included: Breakfast



---

## Day 8



## Return your vehicle to Queenstown Airport

Explore more of Queenstown before dropping your rental car at the airport depot and continuing your onward journey.

---

## Farewell from Aotearoa-New Zealand

Bid farewell to New Zealand, taking with you unforgettable memories of its breathtaking landscapes and incredible adventures. In Maori, it is said mā te wā, which is not goodbye, it is see you soon!

---

## Tour details

Departures:	Daily
Tour type:	South Island Self Drive
Starts:	Queenstown
Finishes:	Queenstown
Tour length:	8
Accommodation:	Boutique Lodges & Hotels
Car/transport type:	

---

## Included activities

Includes	All breakfasts
Includes	Private train station transfers
Includes	Private airport transfers
Includes	TranzAlpine Train from Greymouth to Christchurch
Includes	Queenstown Skyline Gondola and Luge

---

## Accommodation summary

Day 1	The Dairy Private Hotel by Naumi
Day 2	Westwood Lodge
Day 3	The Muse Christchurch
Day 4	Hermitage Hotel, Aoraki Wing Premium
Day 5	Camp Estate at Larnach Castle
Day 6	Dunluce Bed and Breakfast
Day 7	The Dairy Private Hotel by Naumi