

## Cities, Volcanoes and Vineyards Luxury Tour

Explore Central North Island's jewels. You'll be met by your private transfer at Auckland Airport and whisked to meet your ferry to the idyllic Waiheke Island, the perfect spot to recover from a long flight. The essence of Waiheke wine tour will introduce you to the delights of this charming island. Returning to Auckland you pick up your car and travel south to Rotorua and Solitaire Lodge. Here you'll encounter the fascinating Maori culture and enjoy a fabulous day trip to the volcanic Mt Tarawera by helicopter. Next stop is Lake Taupo, where you try your hand at trout fishing. The final stretch of your North Island experience takes you to the Hawkes Bay, New Zealand's oldest wine region and the impeccable Farm at Cape Kidnappers, here you have time to explore the wineries or play a round of golf or simply relax. You'll be flown back to Auckland to meet your departing international flight.

Starts in: Auckland  
 Finishes in: Auckland  
 Length: 11days / 10nights  
 Accommodation: Luxury Lodges  
 Can be customised: Yes

This itinerary can be customised to suit you perfectly. We can add more days, remove days, change accommodations, mix it up, add activities to suit your interests or simply design and create something from scratch. Call us today to get your custom New Zealand itinerary underway.



### Inclusions:

Includes: Late model rental cars

Includes: Unlimited kms

Included activity: Private transfer Auckland Airport to Fullers Ferry Terminal with Tourcorp

Included activity: Fullers Ferry Auckland to Waiheke Island (Return)

Included activity: Air New Zealand flight Napier to Auckland

Included activity: Private Transfer Auckland accommodation to Auckland Airport with Tourcorp

Included activity: Fullers Ferry Waiheke Island to Auckland

Included activity: Te Ra Guided Experience, Cultural Experience and Hangi Buffet Lunch at Te Puia

Included activity: Craters of the Moon Geothermal Walk

plus much more...

Includes: Fully inclusive rental car insurance (excess may apply)

Includes: Afterhours emergency support while touring

Included activity: Electronic Travel Guide and In-Country Support App

Included activity: The Visitor Promise - Cultural Learning Course

Included activity: Private Transfer Auckland Airport to your Auckland Accommodation with Tourcorp

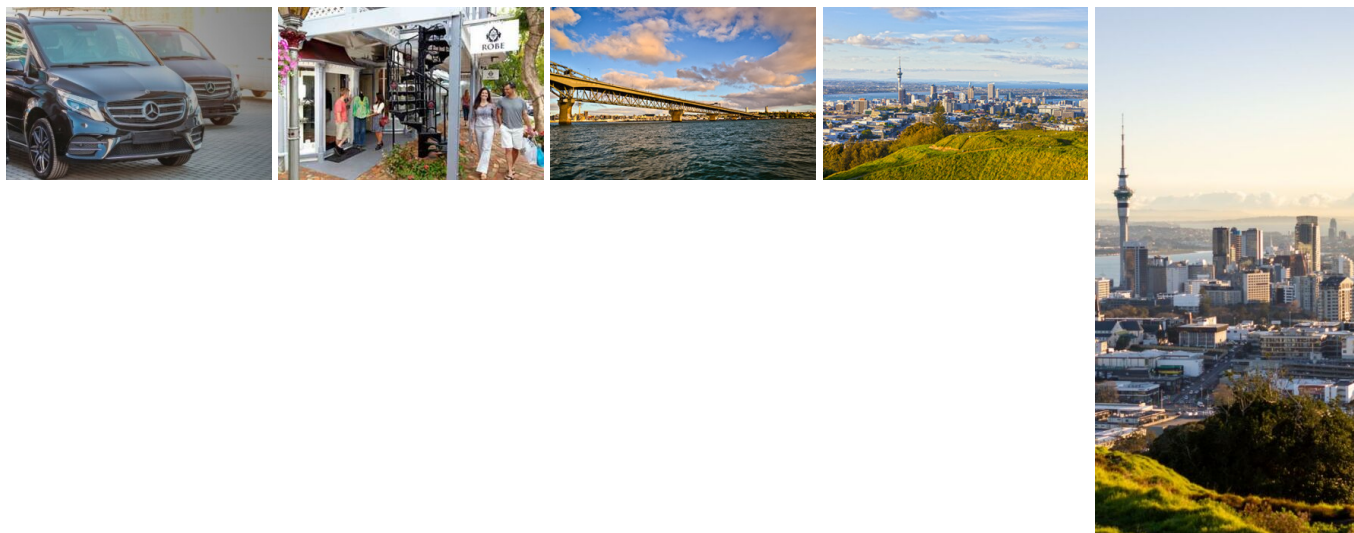
Included activity: Essence of Waiheke Wine Tour with Ananda

Included activity: Private Transfer Auckland City Cruise Terminal to Auckland City car depot with Tourcorp

Included activity: Mount Tarawera & Orakei Korako Thermal Explorer with Volcanic Air

Included activity: Huka Falls Jet Boat Ride

## Day 1



### Private transfer Auckland Airport to Fullers Ferry Terminal with Tourcorp

A private transfer will meet you on arrival at the airport and transfer you to the Fullers Ferry Terminal.

### Fullers Ferry Auckland to Waiheke Island

Take a scenic approximately 45-minute cruise through the Hauraki Gulf between the Auckland downtown ferry terminal and Matiatia Wharf on Waiheke Island.

### Explore Waiheke Island

Waiheke Island is the most visited island in the gulf. A delightful 45 minute ferry ride from downtown Auckland will find you standing at Matiatia Wharf set to enjoy a multitude of diverse attractions. The island is home to around 7,000 people but during the summer weekends there can be as many as 35,000 people enjoying the vineyards, restaurants, cafes, arts and the idyllic scenery. Among the two dozen or so vineyards on the island, Mudbrick, Goldwater Estate, Stoneyridge and Te Whau are some of the best known. The beaches are pristine and the countryside provides many interesting walks. Most notable is the trip to Stoney Batter where you can enjoy breathtaking views of the Hauraki Gulf. The area also has the remains of gun emplacements and a series of tunnels and chambers, protected by the historic places trust.

### Your accommodation: The Boatshed

This chic boutique luxury hotel embodies everything that Waiheke Island is, a relaxed intimate island style luxury hotel. Designer suites, each with panoramic views, are luxurious and spacious; an elegant and contemporary take on the classic seaside retreat.

Meals included: Dinner



## Day 2



### Essence of Waiheke Wine Tour with Ananda

Known as 'New Zealand's Island of Wine', Waiheke has become home to a dedicated group of award-winning wine producers. With a unique micro-climate and the winemakers' philosophy of 'small is beautiful', Waiheke has produced some of New Zealand's most prestigious wines. Visit three of Waiheke's top vineyards and sample a range of their wines. Along the way enjoy a commented scenic drive, learning about the Island's history, geography, people, and culture from your knowledgeable local guide.

## Your accommodation: The Boatshed

This chic boutique luxury hotel embodies everything that Waiheke Island is, a relaxed intimate island style luxury hotel. Designer suites, each with panoramic views, are luxurious and spacious; an elegant and contemporary take on the classic seaside retreat.

Meals included: Breakfast, Dinner



---

## Day 3



### Fullers Ferry Waiheke Island to Auckland

Take a scenic approximately 45-minute cruise through the Hauraki Gulf between Matiatia Wharf on Waiheke Island and the Auckland downtown ferry terminal.

---

### Private Transfer Auckland City Cruise Terminal to Auckland City car depot with Tourcorp

You will be met at the Auckland Cruise Terminal by the driver and transferred to your Auckland car hire depot.

---

### Collect Rental Car

This tour's from price includes an intermediate-sized vehicle, setting you up for comfortable travels. Yet, we understand every adventure is unique! Feel free to select the perfect wheels from our incredible collection of rental cars, spanning from economy hatchbacks to premium SUVs.

---

### Auckland to Rotorua

Your drive south from Auckland begins by crossing the Bombay Hills, which mark the boundary of the greater Auckland area, before leading you into the rich, sprawling farmland of the Waikato region. The drive takes approximately 2.5 hours non-stop, but we recommend allowing 3 hours for a relaxed journey. For a fantastic leg-stretching stop, you may consider a slight detour into Hamilton to visit the renowned Hamilton Gardens (known for its amazing themed garden collection). Alternatively, the quirky small town of Tirau, famous for its buildings shaped like a giant sheep and sheepdog, is right on your main route and makes a quick and fun photo stop. As you continue south, the scenery transitions, and telltale signs of steam and other geothermal activity will signal your arrival into the fascinating thermal and cultural hub of Rotorua.

---

### Solitaire Lodge

Nestled on the shores of Lake Tarawera, Solitaire Lodge offers guests the ideal blend of indulgence and adventure from a picture-perfect setting. Luxurious and elegantly appointed with floor-to-ceiling windows and stunning panoramic views across the lake, guests can choose to relax in front of an open fire with a book from the library, enjoy the bar facilities or take a stroll in the expansive herb garden. Nearby is the Lodge's private jetty with complimentary use of the lodge's kayaks, motorised dinghies and trout fishing gear. Each of the suites is styled for comfort and features panoramic views of the lake and volcano. Bringing the outdoors in, you are invited to unwind and soak up the peace and quiet of this tranquil setting.



## Your accommodation: Solitaire Lodge

Solitaire Lodge Rotorua, one of New Zealand's premier luxury lodges, enjoys breathtaking views over Lake Tarawera, with lush natural bush and volcanic landscape backdrop. The subtle design brings the outdoors in, inviting you to unwind and soak up the peace and quiet of this tranquil setting. Minutes from this iconic resort you will discover a multitude of activities.

Meals included: Breakfast, Dinner



---

## Day 4



### Te Puia: Te Ra Guided Experience, Cultural Experience and Hangi Buffet Lunch

Embark on a guided tour through the heart of Māori craftsmanship and heritage at the New Zealand Māori Arts & Crafts Institute. Explore the renowned schools of greenstone carving, wood carving, and flax weaving, where master artisans and students bring ancient techniques to life. Your journey continues at Rotowhio Pā, a living Māori village, and the Kiwi Conservation Centre, where you'll get a rare glimpse of New Zealand's iconic and endangered Kiwi bird. As you delve into Te Whakarewarewa geothermal valley, marvel at the dramatic landscapes shaped by geothermal activity, including the awe-inspiring Pōhutu Geyser, the largest active geyser in the Southern Hemisphere. After your explorations, indulge in Te Puia's world-famous hāngī buffet lunch, served in Pātaka Kai Restaurant, Bar & Café. Enjoy a delectable array of traditional Māori cuisine, though menus are subject to change to highlight seasonal specialties. The cultural highlight of your visit will take place in the beautifully carved meeting house, Te Aronui a Rua. Here, you'll be welcomed with a pōhiri (traditional welcome), followed by a captivating cultural performance featuring waiata (song), mōteatea (traditional chant), poi, and the powerful haka. This immersive experience at Te Puia offers a deep connection to Māori culture, artistry, and the natural wonders of New Zealand.

---

## Explore Rotorua

Peppered with natural hot springs, boiling mud pools and steaming geysers, Rotorua sits within one of the world's most active volcanic regions. Geothermal landmarks aside, this city of sulphur has a rich indigenous history. Home to several prominent Māori tribes, a visit to one of the Māori experiences should be high on your agenda, learn about the special meaning of pounamu-Greenstone with Mountain Jade, explore the geysers and arts of Te Puia or immerse in an evening with Te Pā Tū. An excursion to one of the area's wellness spas is also a must! Try the Polynesian Spa for an invigorating soak in its natural mineral hot springs, Wai Ariki offers an indulging and unwinding restorative journey or pay a quick visit to Secret Spot for a soak and a delicious smash burger! If it is a thrill you are looking for, spike your adrenaline at Rotorua Canopy Tours, soaring above the ancient native forest below. Alternatively, head up the Skyline Rotorua Gondola for soaring lake views, and ride the luge at night for an extra thrill. Make the most of your time in Rotorua with an excursion through the Wai-O-Tapu Thermal Wonderland, one of the area's most colourful volcanic attractions. Whatever you are after, Rotorua is almost certain to have it!

---

## SUGGESTED ACTIVITY - Wai-O-Tapu Thermal Wonderland

Wai-O-Tapu Thermal Wonderland is a spectacular showcase of New Zealand's colourful and unique geothermal elements sculpted by thousands of years of volcanic activity. You will be introduced to a diversely different natural landscape, extending over 18-sq. km. Enjoy viewing the volcanic features as you walk at your own pace along well-defined tracks. Relax in the first-class Visitor Centre, home to the Gift Shop and Café facilities. Visit the Mud Pool, the largest in New Zealand, it was originally the site of a large mud volcano which was destroyed through erosion in the 1920s. See the history and beauty of the Lady Knox Geyser at 10:15 am every day where a daily eruption happens of up to 20 metres.&nbsp;

---

## Your accommodation: Solitaire Lodge

Solitaire Lodge Rotorua, one of New Zealand's premier luxury lodges, enjoys breathtaking views over Lake Tarawera, with lush natural bush and volcanic landscape backdrop. The subtle design brings the outdoors in, inviting you to unwind and soak up the peace and quiet of this tranquil setting. Minutes from this iconic resort you will discover a multitude of activities.

Meals included: Breakfast, Lunch, Dinner



## Day 5



### Mount Tarawera & Orakei Korako Thermal Explorer with Volcanic Air

Combine the thrill of landing on Mount Tarawera with a flight that includes spectacular aerial views of Rotorua's stunning crater lakes, the renowned Tarawera Falls and the vibrant Waimangu and Wai-O-Tapu geothermal reserves. Leaving Wai-O-Tapu, descend to follow the Waikato River to the hidden valley of Orakei Korako. Once landed, you will ferry across the river and begin your land-based tour. Experience hot springs, gushing geysers and the natural beauty of this geothermal wonderland. The return flight takes in views of farmland and the Paeroa mountain range before flying over Rotorua City and returning to the lakefront pier.

### Your accommodation: Solitaire Lodge

Solitaire Lodge Rotorua, one of New Zealand's premier luxury lodges, enjoys breathtaking views over Lake Tarawera, with lush natural bush and volcanic landscape backdrop. The subtle design brings the outdoors in, inviting you to unwind and soak up the peace and quiet of this tranquil setting. Minutes from this iconic resort you will discover a multitude of activities.

Meals included: Breakfast, Dinner



## Day 6



### Rotorua to Taupo

Today drive through the heart of the Central North Island volcanic plateau. Visit the geothermal regions Wai O Tapu Thermal Wonderland and Waimangu Volcanic Valley, before arriving into the town of Taupo, which sits on New Zealand's largest lake - Lake Taupo. Just north of the town are the Huka Falls and a short detour to view is highly recommended, as is a visit to the nearby Craters of the Moon geothermal reserve.

### Craters of the Moon Geothermal Walk

Located a few minutes north of Taupō this geothermal park known as Craters of the Moon has a great self guided 30 minute walk through steaming craters and bubbling mud pools. Well marked walkways with interpretive boards guide you through one of the regions many active volcanic parks.

### Huka Falls Jet Boat Ride

The Huka Jet is 30 minutes of pure fun and exhilaration, skimming close to cliffs, sliding past trees, feeling the adrenalin of full 360 degree spins. The excitement continues right up to the base of the foaming Huka Falls, where you get a spectacular water level view to New Zealand's most visited natural attraction. Nothing compares to watching 220,000 litres per second tumbling over the cliff face towards you. The water from the mighty Huka Falls runs down the Waikato River through a series of Hydro Power Stations. You'll get a view of the Wairakei Geothermal Power Station in the comfort of a powerful Chevrolet V8 jet boat. This unique Geothermal Power Station uses underground geothermal activity to produce hot steamy water. The Waikato Rivers beautiful environment is varied and unique and is New Zealand's longest river flowing north from our largest lake, Lake Taupō. It is important you read and understand the risks associated with this activity. For more information please see here.

### Your accommodation: The Kinloch Manor

Set in the tranquil 254ha grounds of the Kinloch Club Golf Course, The Kinloch Manor sits on the shores of Lake Taupo; the scenic hub of the North Island. This luxury lodge presents dramatic framed vistas of the championship golf course and beyond to Lake Taupo.

Meals included: Breakfast, Dinner



## Day 7



### Lake Taupo Scenic Cruise to the Maori Rock Carvings

Cruise the spectacular Great Lake Taupo to the remarkable Maori Rock Carvings and around the picturesque bays of Lake Taupo. Your captain will provide an informative and entertaining commentary on the volcanic creation of Lake Taupo and the Maori mythology of the region. Marvel at the amazing views of hidden bays and the spectacular snow-capped mountain peaks of Tongariro National Park. Your boat is fully enclosed so you will stay warm while still being able to take those fantastic holiday pictures. It is important you read and understand the risks associated with this activity. For more information see [here](#).

---

### SUGGESTED ACTIVITY - Kinloch Golf Course

Ranked in 2013 in the Top 100 in the World by Golf Course Architecture Magazine, The Kinloch Club was also rated on opening in 2007 as the top new golf course outside North America by the prestigious US Travel and Leisure Golf Magazine. The Golden Bear visited Kinloch to oversee construction of his signature Championship golf course and returned to The Kinloch Club in February of 2008 to play the course for the first time since completion. Jack was extremely happy with how his vision had come to fruition and was greatly impressed with the maturity of the golf course after it's 'grow in' stage. The Kinloch Club (Nicklaus signature golf course) is the only Nicklaus designed golf course in New Zealand.

---

### Your accommodation: The Kinloch Manor

Set in the tranquil 254ha grounds of the Kinloch Club Golf Course, The Kinloch Manor sits on the shores of Lake Taupo; the scenic hub of the North Island. This luxury lodge presents dramatic framed vistas of the championship golf course and beyond to Lake Taupo.

Meals included: Breakfast, Dinner



---

## Day 8



### Taupō to Napier

The road from Taupō climbs the Ahimanawa Range before reaching the Pacific Coast north of Napier, a city famed for its 1930s Art Deco architecture, Mediterranean climate, and over 2,200 hours of sunshine a year. Known as the city by the sea, Napier boasts vibrant cafes, wineries, and local produce, with Marine Parade offering sweeping ocean views toward Cape Kidnappers, home to the world's largest mainland gannet colony. Bluff Hill provides panoramic views of the town, Westshore beaches, and the bustling Port of Napier. A full day can be spent exploring Ocean Spa hot pools, the Hawke's Bay Museum, and the National Aquarium. In 1931, a devastating magnitude 7.8 earthquake destroyed much of Napier and Hastings, killing 258 people. The subsequent rebuilding created the modern Art Deco city we see today, with the Ahuriri Lagoon raised over two metres to allow for future growth.

---

### Rosewood Cape Kidnappers

With spectacular panoramic views of the Pacific Ocean, nestled among 6,000 acres of rugged coastal farmland, The Farm at Cape Kidnappers offers a multitude of activities within a five-star luxury setting. Offering many comfortable spaces to relax and unwind, including intimate snug, stylish lounges, and outdoor conservatory areas - there is no better way to take in this picturesque landscape. Choose from a range of leisure facilities such as a heated infinity pool and jacuzzi, spa treatments with beautiful forest and ocean views, a world-class golf course and clubhouse and a fully equipped gym, offering yoga, pilates, golf-specific fitness and personal training. The Farm is also home to some of the best trails on the North Island, from independent forest walks to ocean strolls or guided farm tours - pack a picnic and set off on an afternoon of outdoor fun. Also on offer are mountain, bikes, quad bikes and horse treks for the more adventurous traveller.



### Your accommodation: Rosewood Cape Kidnappers

Located in Hawke's Bay, one of New Zealand's most important wine districts, Cape Kidnappers has a rich history. The Farm is a five-star experience set on a 6,000-acre sheep and cattle farm which encompasses land reminiscent of Montana but plunges 800 feet straight into the sea. A championship golf course designed by Tom Doak is just one reason to experience The Farm.

Meals included: Breakfast, Dinner



---

## Day 9



### Explore Hawkes Bay

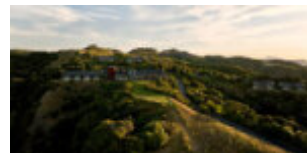
Discover Hawke's Bay, known in Māori as Te Matau-a-Māui or the fish hook of Māui. This is a region renowned for its Mediterranean charm, iconic Art Deco architecture, and award-winning wineries. Explore Mission Estate, the birthplace of New Zealand wine, or tour vineyards for a deeper dive into its winemaking legacy. Fans of the 1930s can enjoy a Vintage Car Tour, showcasing Napier's architectural gems. Outdoor enthusiasts can cycle over 200km of scenic trails or unwind at pristine beaches like Ocean and Waimarama. Indulge your taste buds with local delights, from honey and chocolate to fresh orchard produce. The Hawkes Bay is also home to an abundance of wildlife, head out on a Gannet Safari or educate yourself at the National Aquarium of New Zealand.

---

### Your accommodation: Rosewood Cape Kidnappers

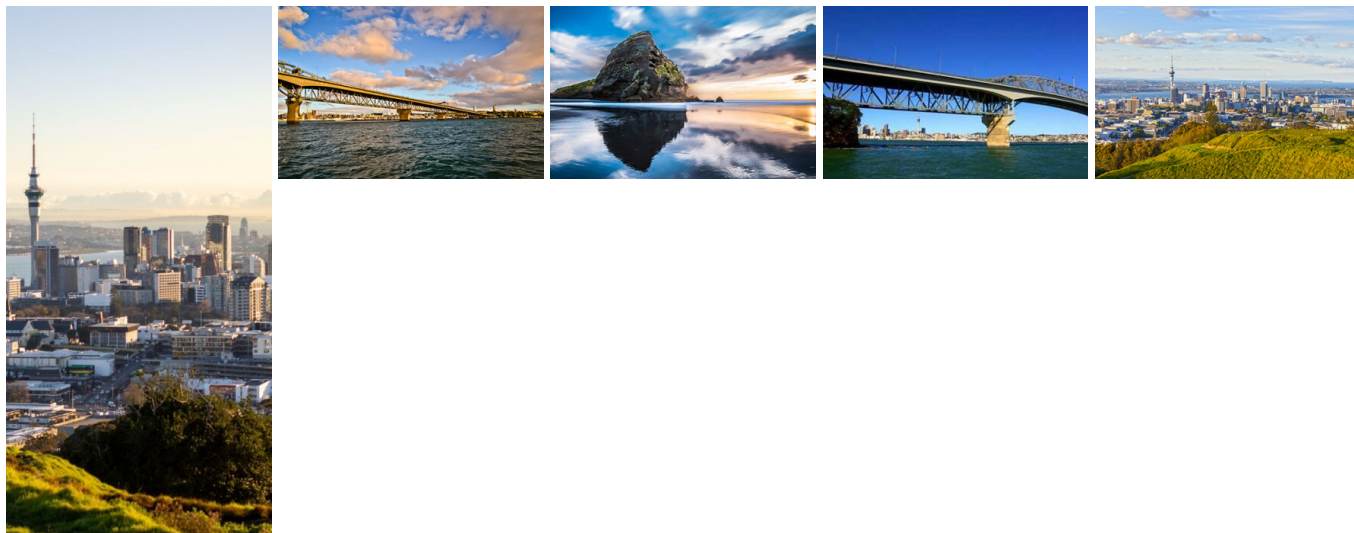
Located in Hawke's Bay, one of New Zealand's most important wine districts, Cape Kidnappers has a rich history. The Farm is a five-star experience set on a 6,000-acre sheep and cattle farm which encompasses land reminiscent of Montana but plunges 800 feet straight into the sea. A championship golf course designed by Tom Doak is just one reason to experience The Farm.

Meals included: Breakfast, Dinner



---

## Day 10



### Air New Zealand flight Napier to Auckland

---

### Private Transfer Auckland Airport to your Auckland Accommodation with Tourcorp

You will be met at the Auckland airport by the driver and transferred to your Auckland accommodation.

## Explore Auckland

Perched on the edge of a large natural harbour, New Zealand's 'City of Sails' offers the best of both worlds. Sandy beaches, native bush and lush rainforests give way to a vibrant urban culture. Spend time in the Viaduct Harbour, try your hand at sailing an America's Cup Yacht or take the ferry to nearby Waiheke Island for a gourmet food and wine experience. Venture to the top of Auckland's highest volcano, Mt Eden, for soaring views of the Hauraki Gulf or hop on the short ferry to Rangitoto Island and hike to the top of the volcanic island. Immerse yourself in nature at the expansive Auckland Botanic Gardens, sprawled across 156 acres of native forest, pack a picnic, soak up the sunshine, and enjoy the birdsong. Head up to the Sky Tower, standing over 300m tall, and have a meal in the 360-degree revolving restaurant. Scale the outermost perimeter of the Harbour Bridge or test your stomach with a bungee jump, then end your day on Ponsonby Road sampling upmarket culinary delights.

---

### Your accommodation: Horizon by SkyCity

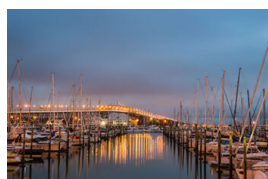
The latest addition to the SkyCity line of hotels is an effortless blend of cutting edge design and distinct kiwi touches. With air bridges connecting you to the International Convention Centre and the SkyCity entertainment zone you can choose to relax or explore. The iconic Sky Tower and the viaduct harbour is right on your doorstep in this centrally located luxury hotel.

Meals included: Breakfast, Dinner



---

## Day 11



### Private Transfer Auckland accommodation to Auckland Airport with Tourcorp

You will be met at your Auckland accommodation by the driver and transferred to the airport.

---



## Tour details

Departures:	Daily
Tour type:	North Island Self Drive
Starts:	Auckland
Finishes:	Auckland
Tour length:	11
Accommodation:	Luxury Lodges
Car/transport type:	

---

## Accommodation summary

Day 1	The Boatshed
Day 2	The Boatshed
Day 3	Solitaire Lodge
Day 4	Solitaire Lodge
Day 5	Solitaire Lodge
Day 6	The Kinloch Manor
Day 7	The Kinloch Manor
Day 8	Rosewood Cape Kidnappers
Day 9	Rosewood Cape Kidnappers
Day 10	Horizon by SkyCity