



## Southern Icons Adventure

Begin your extraordinary journey through New Zealand's South Island, starting and ending in Ōtautahi / Christchurch. From the scenic plains to Aoraki / Mt Cook, you'll witness the country's highest peak and the impressive Haupapa / Tasman Glacier. Discover heritage and wildlife in Ōtepoti / Dunedin and cruise through the stunning Piopiotahi/Milford Sound from Te Ana-au, the gateway to Te Rua-o-te-Moko / Fiordland National Park. In Tāhuna / Queenstown, the adventure capital, choose your own thrill before heading to Franz Josef for more alpine exploration. Your trip culminates with a memorable ride on the iconic TranzAlpine train, crossing the Southern Alps with breathtaking views of gorges and rainforests.

Starts in: Christchurch  
Finishes in: Christchurch  
Length: 10days / 9nights  
Accommodation: Hotel 3 star  
Can be customised: Yes

This itinerary can be customised to suit you perfectly. We can add more days, remove days, change accommodations, mix it up, add activities to suit your interests or simply design and create something from scratch. Call us today to get your custom New Zealand itinerary underway.



### Inclusions:

Includes: All coach transport

Includes: Afterhours emergency support while touring

Included activity: Electronic Travel Guide and In-Country Support App

Included activity: Private Transfer from Christchurch Accommodation to Christchurch International Airport with Christchurch Touring Company

Included activity: Sir Edmund Hillary Alpine Centre Museum and Theatre Explorer Pass with Hermitage

Included activity: Castle to Cruise Tour and Penguin Experience with Monarch

Included activity: Ata Whenua - Shadowland Film at Fiordland Cinema

Included activity: Queenstown to Franz Josef via Wānaka Small Group Tour with Cheeky Kiwi - Lunch Included

: 9 breakfasts, 3 lunches

Includes: All pick ups/drop offs at destinations

Included activity: Private Transfer Christchurch International Airport to Christchurch Accommodation

Included activity: The Visitor Promise - Cultural Learning Course

Included activity: Christchurch to Aoraki-Mt Cook via Lake Tekapo Small Group Tour with Cheeky Kiwi - Lunch Included

Included activity: Mt Cook to Dunedin with Iconic

Included activity: Dunedin to Te Anau via Invercargill & The Catlins with Cheeky Kiwi Travel

Included activity: Milford Sound Cruise from Te Anau and returning to Queenstown with RealNZ - Lunch Included

Included activity: Franz Josef to Christchurch Tour with TranzAlpine Train via Hokitika with Cheeky Kiwi Travel - Lunch Included

## Day 1



### Private Transfer Christchurch International Airport to Christchurch Accommodation

On arrival, you will be met by a private driver and transferred to your Christchurch accommodation.

### Welcome to Christchurch City

New Zealand's garden city is steadily being transformed into a vibrant urban destination. Encompassing a large green belt, it is known for its wide tree lined avenues and lush gardens. A great way to explore the city or easy way to see the sights or ride the historic trams across town to the renowned botanic gardens and the unique cardboard Transitional Cathedral, that's right it is built of cardboard!

### SUGGESTED ACTIVITY - Discover Christchurch Afternoon Tour

A half-day sightseeing tour of Christchurch highlighting both the damage to the city inflicted by several large earthquakes in 2010 and 2011 and the rebuild which is currently in progress, together with the surviving beauty of the city and the historical landmarks. Experience the grand architecture, beautiful gardens, and scenic viewpoints on a half-day city tour of Christchurch.

### Your accommodation: Scenic Hotel Cotswold

The Scenic Hotel Cotswold is just a few minutes walk to boutique shopping at Merivale and Hagley Park. The distinctive architecture of the Scenic Hotel Cotswold reflects Christchurch's image as the most English of cities outside of England.



## Day 2



### Christchurch to Aoraki-Mt Cook via Lake Tekapo Small Group Tour with Cheeky Kiwi - Lunch Included

Departing from Christchurch, you will make your way through the vast Canterbury Plains. Enjoy a delicious stop at Fairlie Bakehouse before marvelling at the vibrant blue waters of Lake Tekapo and the iconic Church of the Good Shepherd. Travel past the stunning Lake Pukaki, framed by Aoraki-Mt Cook and the Southern Alps, and immerse yourself in the breathtaking landscapes of Aoraki-Mt Cook National Park. Capture unforgettable photos and explore New Zealand's highest peak without breaking a sweat!

### Aoraki-Mt Cook National Park

At 3754m Aoraki-Mt Cook is Aotearoa-New Zealand's highest mountain, located deep in the heart of the Southern Alps. As well as its impressive beauty, Aoraki-Mt Cook National Park is also home to a huge range of awe-inspiring sights and activities. Take to the air with Mt Cook Ski Planes for a scenic flight that includes a glacier landing. At around 27 kilometres long the Tasman Glacier is New Zealand's longest and a Glacier Explorers tour allows you to see its unique features up close.

There are many short hikes in and around the park and these are well signposted around the village. Those with an interest in the night sky should take a Big Sky Stargazing tour with the Hermitage Hotel. The region is considered to have one of the clearest night skies in the world and is one of the few gold-rated dark sky reserves worldwide.

Visit the Sir Edmund Hillary Alpine Centre for insight into this region's mountain climbing history. You'll also learn of Sir Ed's incredible achievements and his dedication to helping others around the world.

### Sir Edmund Hillary Alpine Centre Museum and Theatre Explorer Pass with Hermitage

A tribute to New Zealand's Sir Edmund Hillary, a humanitarian, ambassador, and one of the world's greatest explorers. The centre showcases the Aoraki Mount Cook region, the history of climbing, and early transport used throughout the region. This comprehensive museum details the life of Sir Edmund Hillary, the Hermitage, and provides access to the 126-seat custom-designed theatre. Check out the daily film schedule which includes 3D Movies, documentaries, and 360-degree digital dome features.



### Your accommodation: Hermitage Hotel Room Mount Cook View

The Hermitage Hotel ringed by magnificent snow-capped peaks of the Southern Alps, is a world-renowned tourist destination and has been an icon of superior accommodation and dining since 1884.

Meals included: Breakfast, Lunch



---

## Day 3



### SUGGESTED ACTIVITY - Glacier Explorers

Experience 500-year-old icebergs up close on the Aoraki-Mt Cook terminal lake. The Glacier Explorers tour is the only one of its kind in New Zealand and one of only three in the world! Very few glaciers terminate into lakes and even fewer of them are accessible. See towering ice cliffs and floating icebergs from the safety of a specially designed boat. These boats provide a safe way to view unseen and inaccessible areas of New Zealand's largest glacier The Tasman.

---

### Mt Cook to Dunedin with Iconic

In the afternoon you will be picked up from your accommodation in Mt Cook Village for the journey through to Dunedin. Along the way you stop for a short break in Omarama, then onto Oamaru for a scenic tour of the historic Whitestone Precinct. You will then enjoy a guided walk along Koekohe Beach at Moeraki Boulders before reaching Dunedin, where you will be dropped off at your accommodation.

---

### Dunedin

Dunedin, known in Māori as Ōtepoti, is referred to as the "Edinburgh of the Southern Hemisphere". The city has a rightly deserved reputation as one of the best-preserved Victorian and Edwardian cities in the Southern Hemisphere. Of particular note is Dunedin Railway Station, built 1904 - 1906, and St Paul's Cathedral in the Octagon. The Otago Museum is renowned for its Māori and Pacific Island collections and natural history displays. A visit to the Speights, New Zealand's oldest brewery, is also considered a must while in Dunedin. The Botanic Gardens is a great spot and at the right time of year, you can witness the Rhododendron Dell in bloom. The Otago Peninsula is the only home in the world to the Northern Royal Albatross. The Peninsula can be visited for the day from Dunedin and the stunning harbor landscape and wildlife are worth exploring. High among the rolling hills of the Peninsula is Larnach Castle, the grand home of an early politician. Construction of the castle began in 1871 and was completed 12 years later. From here, views out to sea and back towards the city emphasize the singular beauty of Dunedin and its jewel-like harbor.

---

### Your accommodation: Scenic Hotel Dunedin City

Just two blocks from the Octagon in the heart of the city, Scenic Hotel Dunedin City is close to shops, parks and the best city attractions and services. The hotel provides excellent 4-star accommodation to Dunedin's visitors.

Meals included: Breakfast



---

## Day 4



### Castle to Cruise Tour and Penguin Experience with Monarch

Today you'll explore the wildlife and history of the Otago Peninsula. You'll be welcomed to the MV Monarch for a wildlife cruise around Taiaroa Head, home to the world's only mainland nesting site for royal albatross. Scattered along the rocks you'll also see fur seals basking in the sun and possibly sea lions on the beach. In the water, you may also see penguins, dolphins, and other marine birds. Back on land, you'll take a guided tour of New Zealand's only castle, Larnach Castle built in 1871. Learn of the scandals and history of the castle and explore the beautiful garden of international significance. Your final stop of the day is to The Otago Peninsula Eco Restoration Alliance (formerly Penguin Place), a natural nesting site for the rarest penguin in the world, the Yellow Eyed Penguin.

### Your accommodation: Scenic Hotel Dunedin City

Just two blocks from the Octagon in the heart of the city, Scenic Hotel Dunedin City is close to shops, parks and the best city attractions and services. The hotel provides excellent 4-star accommodation to Dunedin's visitors.

Meals included: Breakfast



---

## Day 5



### Dunedin to Te Anau via Invercargill & The Catlins with Cheeky Kiwi Travel

Discover the wild beauty of New Zealand's southern coast on this full-day journey from Dunedin to Te Anau. Wind through the remote Catlins, a region rich in native wildlife, hidden gems, and dramatic landscapes. From towering cliffs and ancient forests to quirky art spots and tumbling waterfalls, each stop offers something unique. Travel in comfort with a small group and an expert guide who brings the stories of this untamed region to life.

---

### Te Anau

It is the gateway to Fiordland National Park and a perfect base to visit Piopiotahi-Milford Sound. The Milford Road originates here, and this is arguably one of the most scenic stretches of highway in the country. Te Anau sits on the shores of spectacular Lake Te Anau, which reaches depths of 417 meters. Te Anau Township is the starting point for many walking tracks, including two of New Zealand's Great Walks, the Milford track and the Kepler track. Apart from hiking, you could go kayaking, lake cruising, fishing, or exploring Te Anau Glowworm Caves. You could go for a bike ride alongside the lake towards Lake Manapouri, on a popular Lake to Lake biking route. Along the way, you will pass a bird sanctuary specialising in Takahe, and other native birds.

---

### Ata Whenua - Shadowland Film at Fiordland Cinema

Ata Whenua refers to the southwestern coast of New Zealand and translates to English as "Shadow Land". This breathtaking short film will take you on an unforgettable journey through one of the most awe-inspiring landscapes on earth, Fiordland National Park. Shot by award-winning cinematographers with outstanding musical composition, this is the next best thing to a scenic flight over this spectacular wilderness.

---

### Your accommodation: Kingsgate Hotel Te Anau

Kingsgate Hotel is conveniently located only a short five-minute walk along the shore of beautiful Lake Te Anau to reach the town centre. The hotel is set amongst manicured gardens on the tranquil shores of Lake Te Anau.

Meals included: Breakfast



---

## Day 6



### Milford Sound Cruise from Te Anau and returning to Queenstown with RealNZ - Lunch Included

From Te Anau, you travel by coach along the spectacular Milford Road. Photo stops are made on the way into Milford, with additional photo stops and a short walk on the return journey. RealNZ experienced drivers enjoy sharing their knowledge of the area. On reaching Milford Sound, you join a Cruise for a leisurely cruise the full-length of Milford Sound to the Tasman Sea. The cruise provides excellent viewing opportunities and plenty of time is available to enjoy waterfalls, rainforests, mountains, and wildlife. During the cruise, your friendly crew provides commentaries in several languages and points out sights such as Mitre Peak and the Pembroke Glacier. It is important you read and understand the risks associated with this activity. For more information, see here.

## Queenstown

Queenstown known in Māori as Tāhuna, is home to many adrenaline-inducing activities. Nestled on the shores of Lake Wakatipu, this alpine town has very distinct seasons, and most adrenaline-filled activities can be accessed year-round. Queenstown is home to jet boating, bungy jumping, rafting, skydiving, paragliding, and even indoor thrills. If you want that rush - head out on the Shotover Jet, dive off the Nevis Bungy, freefall on the Canyon Swing, or Zip line the Gondola. While arguably the brightest gem in New Zealand's crown, Queenstown offers far more than an action-packed getaway. If you're looking for a slightly slower pace, there are plenty of recreational activities, including hiking and biking trails to explore, guided tours, boat cruises, scenic flights, or spa and wellness options to help you get away. Head to the lakefront, eat at one of the al fresco eateries, and soak up the local vibes; catch a ride on the iconic 100-year-old steamship the TSS Earnslaw; or take the Skyline Gondola and enjoy bird's-eye views of the Remarkables mountain ranges and Lake Wakatipu. Pack a picnic and go for a hike, only 20 minutes from Central Queenstown, Coronet Peak opens for summer sightseeing. You can ride the Peak Gondola to the top for panoramic views and hike the trails, or go for a bike ride on many excellent biking trails. In winter, Queenstown becomes a world-class winter resort, with four ski areas and a range of activities, bars, restaurants, and ways to relax and unwind.&nbsp;

### Your accommodation: Ramada Hotel & Suites Queenstown Central

Ramada Hotel & Suites offers well-appointed apartment-style rooms located in the heart of Queenstown. Experience tranquillity all year round, overlooking the shores of Lake Wakatipu and within walking distance of Queenstown's central shopping and entertainment area.

Meals included:            Breakfast, Lunch



## Day 7



### Explore Queenstown

Queenstown, known in Māori as Tāhuna is celebrated as New Zealand's 'adventure capital'. Though Queenstown offers far more than a fast-paced, action-packed holiday. Settled on the shores of Lake Wakatipu beneath a soaring panorama of the Remarkables Mountain Range, this alpine town is surrounded by a plethora of historic, gastronomic, and scenic wonders. Whether you are looking for a scenic short walk or a longer one, you will find the perfect hike or bike trail in Queenstown. Explore Queenstown Gardens, or try out more challenging trails up to Ben Lomond Walkaway or Queenstown Hill Walking Track. Enjoy iconic views and take Queenstown Gondola up 450 metres to Bob's Peak, or ride on the 100-year-old Steamship - the TSS Earnslaw - to Walter Peak Station for dinner and a farm tour. Browse the waterfront cafes and al fresco restaurants, try out the famous Fergburger, or grab a dessert at Patagonia Chocolates.

### SUGGESTED ACTIVITY - Wilderness Jet Experience with Dart River Safaris

Journey deep into the heart of the world-renowned Mt Aspiring National Park, where myth, heritage, and fantasy come to life. As one of Queenstown's most exhilarating activities, the Wilderness Jet adventures on a spectacular journey deep into the heart of the world-renowned Mount Aspiring National Park. It is important you read and understand the risks associated with this activity. For more information please see here.

### SUGGESTED ACTIVITY - Gondola and Buffet Dinner with Skyline Queenstown

With breathtaking views across Queenstown and Lake Wakatipu, the Skyline Complex is a must-do. Catch the fully enclosed gondola to the summit for a remarkable panorama of the city's surroundings. Wander the outdoor viewing decks then enjoy a gourmet buffet meal in the Stratosphere Restaurant.

### SUGGESTED ACTIVITY - Best of Queenstown Scenic Tour with Altitude Tours

Experience Queenstown's Ultimate Day Tour, from central Queenstown. Your adventure begins with a journey in a premium vehicle with complimentary Wi-Fi, leading you to an observation point for stunning panoramic views. Next, visit the charming township of Arrowtown, with a stop at the Shotover River for photos, and enjoy time to explore, grab a coffee, or try gold panning. Continue to Gibbston, home to the world's first commercial bungy jump and famous for its Middle-earth magic and world-class wines. Enjoy wine tasting (non-alcoholic substitutes available) and a shared cheeseboard at a local winery with breathtaking views. Conclude your tour with a picturesque 30-minute scenic boat cruise on Lake Wakatipu, ending at the wharf in the heart of Queenstown.



## Your accommodation: Ramada Hotel & Suites Queenstown Central

Ramada Hotel & Suites offers well-appointed apartment-style rooms located in the heart of Queenstown. Experience tranquillity all year round, overlooking the shores of Lake Wakatipu and within walking distance of Queenstown's central shopping and entertainment area.

Meals included: Breakfast



---

## Day 8



### Queenstown to Franz Josef via Wānaka Small Group Tour with Cheeky Kiwi - Lunch Included

Departing from Queenstown, this journey takes you to the historic Cardrona Hotel, renowned for its rustic charm and spectacular mountain setting. In Wānaka, you'll capture the iconic photo of the Wānaka Tree with Mt Aspiring and the Southern Alps in the background. Continuing past the Clutha River, you'll enjoy scenic stops at Lake Hāwea, Thunder Creek Falls, and Ship Creek, where the rainforest meets the ocean. The tour concludes at Franz Josef, after passing glacial rivers and the picturesque Lake Matheson, a photographer's paradise.

---

### Franz Josef

Franz Josef, named after both the local village and the nearby glacier, holds special significance in Māori culture as "Ko Roimata o Hine Hukatere" – The Tears of the Ice Maiden. This rare glacier is one of only three in the world that descends from alpine heights into a temperate rainforest, almost reaching sea level. New Zealand is home to two of these unique glaciers, Franz Josef and Fox Glacier, both highly accessible and popular with visitors. The best ways to experience the glacier are through scenic flights or, for the adventurous, a heli-hike. You can also enjoy glacier views with a short drive from the village and walking tracks. Beyond the glacier, Franz Josef offers a wealth of adventure activities and beautiful forest and alpine walks, making it a must-visit destination.

---

## Your accommodation: Scenic Hotel Franz Josef Glacier

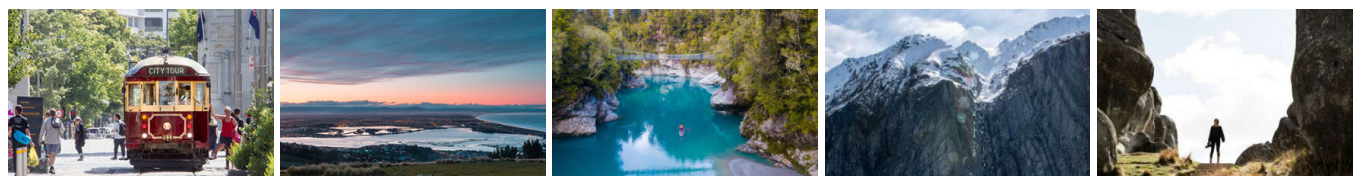
Only a breath away from the Franz Josef Glacier, Scenic Hotel is located in the heart of Franz Josef Village. Here you will find all of the amenities you would expect, as well as being close to the shops, restaurants and activities on offer in the beautiful Westland region.

Meals included: Breakfast, Lunch



---

## Day 9



### Franz Josef to Christchurch Tour with TranzAlpine Train via Hokitika with Cheeky Kiwi Travel - Lunch Included

Experience the wild beauty of New Zealand's West Coast like never before on a unique small group tour and TranzAlpine scenic train journey with Cheeky Kiwi Travel. Starting in Franz Josef and ending in Christchurch, this iconic adventure takes you along the stunning, ever-changing coastline, uncovering hidden gems and charming towns along the way. Led by passionate, expert guides, you'll explore rugged landscapes, encounter breathtaking natural wonders, and dive deep into the heart of New Zealand's most spectacular region. Unforgettable moments await on this must-do journey.

---

## Your accommodation: Scenic Hotel Cotswold

The Scenic Hotel Cotswold is just a few minutes walk to boutique shopping at Merivale and Hagley Park. The distinctive architecture of the Scenic Hotel Cotswold reflects Christchurch's image as the most English of cities outside of England.

Meals included: Breakfast



## Day 10



### Private Transfer from Christchurch Accommodation to Christchurch International Airport with Christchurch Touring Company

A private transfer will collect you from your accommodation and transfer you to Christchurch International Airport in time for your departing flight.

---

### Farewell from Aotearoa / New Zealand

Bid farewell to Aotearoa / New Zealand, taking with you unforgettable memories of its breathtaking landscapes and incredible adventures. In Māori, it is said mā te wā, which is not goodbye, it is see you soon!

---

## Tour details

Departures:	Daily
Tour type:	Independant Bus & Coach
Starts:	Christchurch
Finishes:	Christchurch
Tour length:	10
Accommodation:	Hotel 3 star
Car/transport type:	

---

## Accommodation summary

Day 1	Scenic Hotel Cotswold
Day 2	Hermitage Hotel Room Mount Cook View
Day 3	Scenic Hotel Dunedin City
Day 4	Scenic Hotel Dunedin City
Day 5	Kingsgate Hotel Te Anau
Day 6	Ramada Hotel & Suites Queenstown Central
Day 7	Ramada Hotel & Suites Queenstown Central
Day 8	Scenic Hotel Franz Josef Glacier
Day 9	Scenic Hotel Cotswold