

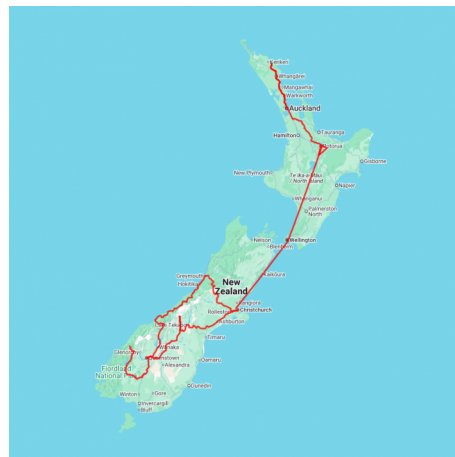


## Ultimate NZ Explorer

This comprehensive tour takes in the stunning Bay of Islands, offering a chance to delve into New Zealand's rich history. Guests will immerse themselves in Māori culture at Tamaki Māori Village before stepping into the enchanting world of the Hobbiton Movie Set. The South Island reveals its dramatic beauty with explorations of glacial lakes, the iconic Milford Sound, and an exhilarating Dart River Safari jet boat tour. A classic steamship cruise on the TSS Earnslaw, complete with dinner, provides a touch of elegance, complemented by a delightful boutique wine tour and the breathtaking TranzAlpine Scenic Train journey.

Starts in: Auckland  
Finishes in: Christchurch  
Length: 17days / 16nights  
Accommodation: Hotel 4 star  
Can be customised: Yes

This itinerary can be customised to suit you perfectly. We can add more days, remove days, change accommodations, mix it up, add activities to suit your interests or simply design and create something from scratch. Call us today to get your custom New Zealand itinerary underway.



### Inclusions:

Includes: All coach transport  
Includes: Afterhours emergency support while touring  
Included activity: Electronic Travel Guide and In-Country Support App

Included activity: Aoraki-Mount Cook to Queenstown Small Group Tour with Cheeky Kiwi  
Included activity: Milford Sound Business Class with Real NZ and Altitude Tours - Includes Canapes  
Included activity: TSS Earnslaw Cruise and Walter Peak Gourmet BBQ Dinner  
Included activity: Queenstown to Franz Josef with Glacier Shuttles

Included activity: Shared Transfer from Christchurch Train Station to Christchurch CBD Accommodation with Christchurch Touring Company  
Included activity: Private Transfer from Christchurch Accommodation to Christchurch International Airport with Christchurch Touring Company

plus much more...

Includes: All pick ups/drop offs at destinations  
Included activity: The Visitor Promise - Cultural Learning Course

Included activity: Private Transfer Auckland Airport to your Auckland Accommodation with Tourcorp

Included activity: Appellation Boutique Wine Tour

Included activity: Wilderness Jet Experience with Dart River Safaris

Included activity: Glacier Valley Shuttle

Included activity: TranzAlpine Scenic Train: Greymouth to Christchurch

Included activity: Franz Josef to Greymouth Train Station with Hokitika Scenic Tours

Included activity: Paihia Central/Coach Stop to Paihia Accommodation with Haruru Cabs

## Day 1



### Private Transfer Auckland Airport to your Auckland Accommodation with Tourcorp

You will be met at the Auckland airport by the driver and transferred to your Auckland accommodation.

### Welcome to Auckland

Welcome to Auckland, known in Māori as Tāmaki Makaurau. Auckland is New Zealand's vibrant "City of Sails," and the country's largest metropolitan area. Nestled between the Pacific Ocean and the Tasman Sea. Surrounded by native bush, lush rainforests, and pristine beaches, Auckland is a haven for both adventurers and urban explorers. Wander through world-class museums and galleries in the city centre or enjoy a peaceful retreat at the Auckland Gardens, where stunning landscapes showcase New Zealand's diverse flora. Stroll along the lively waterfront to savour fresh seafood and international cuisine at Viaduct restaurants. For an unforgettable perspective, ascend the iconic SkyTower, New Zealand's tallest structure, and take in panoramic views of the city and its picturesque islands.

### SUGGESTED ACTIVITY - Harbour Sailing Dinner Cruise with Explore

This unique on-water sailing and dining experience is not to be missed while you're in Auckland. Enjoy smooth sailing on the Waitemata Harbour - then watch this photogenic city come alive with twinkling lights. Enjoy your meal as you sail around the beautiful Auckland Harbour taking in the view as the sun slowly sets. You'll be treated to canapes and a drink as you set off towards Westhaven Marina. To finish the evening off, savour your dessert course as you leisurely sail back to Auckland's vibrant Viaduct Harbour.

### SUGGESTED ACTIVITY - Wētā Workshop Unleashed

A jaw-dropping, senses-shattering, awe-inspiring adventure into the heart of movie magic! Get hands-on and immerse yourself in an extraordinary world of practical effects, props and larger-than-life sets. On this award-winning tour, you can explore three movie projects imagined by the Weta crew and uncover how they bring big screen concepts to life. Discover a mind-blowing world of robots, monsters, dinosaurs and more - step right into the action to see, play and experience movie-making up close.

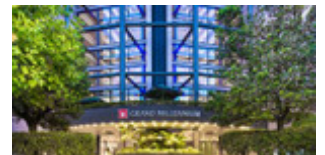
### SUGGESTED ACTIVITY - All Blacks Experience

See what it takes to make, shape and be an All Black. Experience first-hand the excitement and emotion of game day. Discover the stories behind some of world rugby's most famous players, moments, and matches.

This guided experience introduces you to the game of rugby including state-of-the-art displays combining sound, images, interactive technology, and hands-on activities. Discover New Zealand's deep passion for our national sport, experience the full force of the All Blacks haka, and tackle interactive zones where you can try out your kicking, catching, line-out, and accuracy skills against legendary All Blacks.

### Your accommodation: Grand Millennium Auckland

Located in the heart of the city, a stay at Grand Millennium Auckland places you within walking distance of some of the city's finest dining, shopping and entertainment venues.



## Day 2



### Auckland to Paihia, Bay of Islands by InterCity Coach

Leave Auckland and head North to the Bay of Islands. Taking you along the coast road past the seaside villages of Orewa and Waiwera. Then it's on to the township of Puhoi, New Zealand's only Bohemian settlement, then Warkworth and the harbourside city of Whangarei and the unique township of Kawakawa. Arriving into the subtropical Bay of Islands you are greeted with bush-clad hillsides dropping to golden sand beaches. Paihia is the main centre of the bay and has a great beachside atmosphere.



## Russell Mini Tour with Fullers GreatSights

Known until the early 1840s as Kororāreka, Russell was the first town and sea port in New Zealand. The Bay of Islands offered a safe anchorage and by the 1830s Russell had become a lawless trading centre where whalers, seafarers and merchants mixed with adventurers, deserters and escaped convicts from Australia. Today the town once called the 'Hell Hole of the Pacific' is a charming and tranquil spot. This intimate one-hour coach tour visits many of Russell's iconic locations that make it so significant in New Zealand's early history. Your tour will be led by an engaging guide whose combination of historical knowledge and local insight will bring the culture and history of the area to life.

---

## Paihia Central/Coach Stop to Paihia Accommodation with Haruru Cabs

On arrival to Paihia, you will be transferred from Paihia Central to your accommodation.&nbsp;

---

## Your accommodation: Copthorne Hotel and Resort Bay of Islands

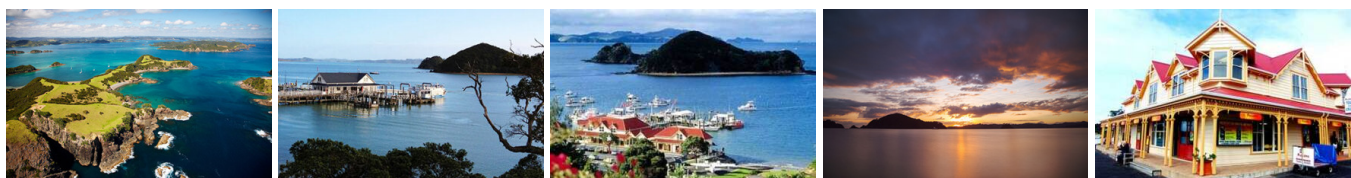
Copthorne Hotel & Resort Bay of Islands is located within the Waitangi Treaty grounds, surrounded by native bush and the beautiful Bay of Islands Harbour.

Meals included:            Breakfast



---

## Day 3



## Paihia Accommodation to Paihia central/coach stop with Haruru Cabs

You will be transferred from your accommodation to Paihia Central.&nbsp;

---

## Hole in the Rock Cruise with Fullers GreatSights

Board your cruise and take in the stunning views as you glide out through the islands and along the Rakaumangamanga Peninsula to Cape Brett, where a historic lighthouse keeps watch over and Piercy Island/Motukōkako, or as it is popularly known as the Hole in the Rock. According to Māori legend, local warriors used to paddle through the Hole in the Rock in their canoes before departing for battle. Drops of water from the cave roof above were a good omen. If conditions permit, your skipper will expertly guide the ship through the narrow space. Keep an eye out for common and bottlenose dolphins, whales, and other marine life during your cruise, and have your camera ready as you get up close to the action. Stop off at Otehei Bay on Urupukapuka Island where you have time to relax, take a walk, have a swim, or enjoy a bite to eat and drink from the on-site fully licensed cafe. The purpose-built catamaran is licensed by DOC (the Department of Conservation) for dolphin viewing and the crew has years of experience locating dolphins in these waters.&nbsp;

---

## Paihia Central/Coach Stop to Paihia Accommodation with Haruru Cabs

On arrival to Paihia, you will be transferred from Paihia Central to your accommodation.&nbsp;

---

## Your accommodation: Copthorne Hotel and Resort Bay of Islands

Copthorne Hotel & Resort Bay of Islands is located within the Waitangi Treaty grounds, surrounded by native bush and the beautiful Bay of Islands Harbour.

Meals included:            Breakfast



---

## Day 4



## Paihia Accommodation to Paihia central/coach stop with Haruru Cabs

You will be transferred from your accommodation to Paihia Central.&nbsp;

---

## Paihia, Bay of Islands to Auckland with InterCity Coach

Leaving the magical Bay of Islands behind you head south on State Highway 1 back towards Auckland, the "City of Sails". The route takes you through Kawakawa, affectionately known as 'train town'. The farming regions of Wellsford and Warkworth accompany you the rest of the journey before passing through the suburbs of the North Shore and crossing the harbour bridge and into the heart of Tāmaki Makaurau-Auckland City.

---

### Your accommodation: Grand Millennium Auckland

Located in the heart of the city, a stay at Grand Millennium Auckland places you within walking distance of some of the city's finest dining, shopping and entertainment venues.

Meals included:            Breakfast



---

## Day 5



### Auckland to Rotorua Small Group Tour via Hobbiton with Bush and Beach

Departing from Auckland, this is a wonderful way to get to Rotorua and include a magical journey through Middle-Earth to the Hobbiton Movie Set from "The Lord of the Rings" and "The Hobbit" films. Travel south from Auckland over the Bombay Hills to the rich farmland of the Waikato region. Journey through the heritage town of Cambridge where tree-lined streets add to the English-style atmosphere. On arrival at Shire's Rest, you embark on your Hobbiton movie set tour where you will see 44 Hobbit holes, the Mill and double arch bridge, the party tree and visit the Green Dragon Inn. At this stunning location, you can take a photo at the door of Bilbo's house in Bag End, looking out over the whole of Hobbiton to the hills in the distance. At the end of your Hobbiton movie set tour, you will travel onwards to Rotorua.

---

### SUGGESTED ACTIVITY - Polynesian Spa Deluxe Lake Spa

Rotorua's Polynesian Spa offers a unique thermal spa experience on the shore of Lake Rotorua. Enjoy tranquil bathing and lake views in four shallow alkaline rock pools, each with different temperatures (36°C to 42°C). Surrounded by revitalising native New Zealand flora, natural rocks, the sound of two waterfalls and a grotto. The pools are filled with soothing alkaline mineral water leaving your skin soft and supple. Unwind in either the indoor or outdoor relaxation area overlooking the four hot mineral pools and Lake Rotorua, here you can further decompress on the five geothermally heated recliners set in the stunning backdrop of New Zealand's lush and natural greenery. The Lake Spa is a unique thermal pool environment, where the atmosphere changes from day to night, and from winter steam to summer sparkle.

---

### Your accommodation: Millennium Hotel Rotorua

Millennium Hotel is Rotorua's largest 4-star deluxe hotel. Perfectly situated in the heart of the city overlooking Lake Rotorua. Five levels of accommodation offer guests a wide variety of scenic views.

Meals included:            Breakfast



---

## Day 6





## Mount Tarawera & Orakei Korako Thermal Explorer by Floatplane with Volcanic Air

From above Mount Tarawera's impressive views include vast volcanic rifts, distant national parks, and our treasured lakes. Flying south on a floatplane, you will gain an appreciation of what local Maori refer to as the 'Sisters of Fire'. Here, volcanic activity has pierced the earth's surface across the fault line forming the reserves of Waimangu and Wai-O-Tapu which, when viewed from above, display a spectacular palette of nature's most vibrant colors. Landing at Orakei Korako, 'the Hidden Valley', is an amazing opportunity to experience hot springs, gushing geysers, and the natural beauty of this geothermal wonderland.

---

## Te Pā Tū Evening Māori Cultural Experience - Dinner Included

New Zealand's Most Awarded Cultural Attraction, presenting Te Pā Tū. Feast on song, drama, tradition, and divine seasonal kai (cuisine) within the forest Pā (village) blanketed by towering Tawa trees, blazing bonfires, and a forest-formed amphitheatre. Te Pā Tū shares Māori history, traditions, and cultural aspirations across 4-hours of celebration and feasting. These events change with each season of the Maramataka, the Māori lunar calendar.

---

## Your accommodation: Millennium Hotel Rotorua

Millennium Hotel is Rotorua's largest 4-star deluxe hotel. Perfectly situated in the heart of the city overlooking Lake Rotorua. Five levels of accommodation offer guests a wide variety of scenic views.

Meals included: Breakfast, Speciality Dinner



## Day 7



## Rotorua CBD to Rotorua Airport - Private Transfer

You will be collected from your accommodation and transferred to Rotorua Airport.

---

## Air New Zealand flight Rotorua to Wellington

Fly from Rotorua airport to Wellington airport.

---

## Private Transfer Wellington Airport to your Accommodation with In Style Executive

You will be met on arrival at Wellington airport and transferred to your accommodation.

---

## Lord Of The Rings Half Day Private Tour with Capital Personalised Tour

Prepare for an unforgettable LOTR adventure. Leaving Wellington, you will first head for the hills, admiring views from Mt Victoria before visiting Hobbit's Hideaway in the 'Outer Shire'. Next, immerse yourself at the Weta Cave in Miramar. Tour the museum, shop, and capture photos with iconic movie props. Experience the fascinating 'Weta Workshop Experience', going behind-the-scenes to see props and weaponry, with artists describing their creations. After a magical cinematic journey, you will return to Wellington.

---

## Your accommodation: Bolton Hotel Wellington

The Bolton Hotel offers contemporary apartment-style accommodation in the heart of Wellington. Just steps from the Parliament buildings and central business district, Bolton Hotel is conveniently close to the best of the city's shops, cafes and restaurants and is within walking distance of Wellington's vibrant waterfront.

Meals included: Breakfast



## Day 8



## Private Transfer Wellington Hotel to Airport with In Style Executive

You will be collected from your Wellington hotel and transferred to the airport.

---

## Air New Zealand flight Wellington to Christchurch

Fly from Wellington Airport to Christchurch Airport.

---

## Private Transfer Christchurch International Airport to Christchurch Accommodation

On arrival, you will be met by a private driver and transferred to your Christchurch accommodation.

---

### Your accommodation: Sudima Christchurch City

Sudima Christchurch City is a brand new 5-star boutique hotel, ideally located on Victoria Street. Amidst an array of cafes, restaurants and bars, stay only a martini olive pips' throw from beautiful Hagley Park and Christchurch's CBD. Experience the garden city in comfort and style.

Meals included: Breakfast



---

## Day 9



### Christchurch to Aoraki-Mt Cook via Lake Tekapo Small Group Tour with Cheeky Kiwi - Lunch Included

Departing from Christchurch, you will make your way through the vast Canterbury Plains. Enjoy a delicious stop at Fairlie Bakehouse before marvelling at the vibrant blue waters of Lake Tekapo and the iconic Church of the Good Shepherd. Travel past the stunning Lake Pukaki, framed by Aoraki-Mt Cook and the Southern Alps, and immerse yourself in the breathtaking landscapes of Aoraki-Mt Cook National Park. Capture unforgettable photos and explore New Zealand's highest peak without breaking a sweat!

---

### Glacier Explorers

Experience 500-year-old icebergs up close on the Aoraki-Mt Cook terminal lake. The Glacier Explorers tour is the only one of its kind in New Zealand and one of only three in the world! Very few glaciers terminate into lakes and even fewer of them are accessible. See towering ice cliffs and floating icebergs from the safety of a specially designed boat. These boats provide a safe way to view unseen and inaccessible areas of New Zealand's largest glacier The Tasman.

---

### Your accommodation: Hermitage Hotel, Wakefield Wing Superior Room

The Hermitage Hotel ringed by magnificent snow-capped peaks of the Southern Alps, is a world-renowned tourist destination and has been an icon of superior accommodation and dining since 1884. Room type - Wakefield Wing Superior room facing Aoraki/Mt. Cook.

Meals included: Breakfast



---

## Day 10



### SUGGESTED ACTIVITY - Alpine Explorer Heli Flight and Snow Landing with The Helicopter Line

Experience this magnificent alpine environment with a 35 minute flight over the Ben Ohau Mountains. Fly close to the steep ridges and rise over a mountain pass which reveals superb views out to Aoraki/Mount Cook and its surrounding peaks. Prepare yourself for an amazing alpine landing where you will be able to step out of the helicopter and play in the snow. Should weather not be suitable to take this flight you are able to transfer your booking onto a similar tour on any of the Helicopter Line's operations in Queenstown or Mt Cook. It is important to read and understand the risks associated with this activity. A full risk disclosure can be found [here](#).

---



## Aoraki-Mount Cook to Queenstown Small Group Tour with Cheeky Kiwi

This scenic tour winds its way from Aoraki-Mt Cook to some of the best sights the Southern Alps area has to offer; stunningly blue Lake Pukaki, High Country Salmon, the panoramic Lindis Pass, the grand Kawarau Gorge before finally coming to an end in breathtaking Tāhuna-Queenstown, the adventure capital of the world.

### Your accommodation: Millennium Hotel Queenstown

Right in the heart of the action, the Millennium Hotel is just minutes from Queenstown's central shopping and entertainment district. Outdoor activities such as bungy jumping, white water rafting and jet boating are just some of the easily accessible activities nearby in New Zealand's adventure capital.

Meals included: Breakfast



## Day 11



### Explore Queenstown

Queenstown, known in Māori as Tāhuna is celebrated as New Zealand's 'adventure capital'. Though Queenstown offers far more than a fast-paced, action-packed holiday. Settled on the shores of Lake Wakatipu beneath a soaring panorama of the Remarkables Mountain Range, this alpine town is surrounded by a plethora of historic, gastronomic, and scenic wonders. Whether you are looking for a scenic short walk or a longer one, you will find the perfect hike or bike trail in Queenstown. Explore Queenstown Gardens, or try out more challenging trails up to Ben Lomond Walkaway or Queenstown Hill Walking Track. Enjoy iconic views and take Queenstown Gondola up 450 metres to Bob's Peak, or ride on the 100-year-old Steamship - the TSS Earnslaw - to Walter Peak Station for dinner and a farm tour. Browse the waterfront cafes and al fresco restaurants, try out the famous Fergburger, or grab a dessert at Patagonia Chocolates.

### SUGGESTED ACTIVITY - Shotover Jet Canyon Jet Boat Ride

Shotover Jet is the only company permitted to operate in the Shotover River Canyons. It's a thrilling ride! Skim past rocky outcrops at close range in your Shotover Jet 'Big Red', as you twist and turn through the narrow canyons at breathtaking speeds. And a major highlight - hold tight for the world-famous Shotover Jet full 360-degree spins! It is important you read and understand the risks associated with this activity. For more information please see [here](#).

### SUGGESTED ACTIVITY - Queenstown Skyline Gondola Ride

Hop aboard the Skyline Gondola - the steepest cable car lift in the Southern Hemisphere! From which you can take in the awe-inspiring views of this spectacular landscape. Sit back and relax as you enjoy panoramic views of The Remarkables, Walter Peak, Cecil Peak, Coronet Peak and the magnificent Lake Wakatipu.

### Your accommodation: Millennium Hotel Queenstown

Right in the heart of the action, the Millennium Hotel is just minutes from Queenstown's central shopping and entertainment district. Outdoor activities such as bungy jumping, white water rafting and jet boating are just some of the easily accessible activities nearby in New Zealand's adventure capital.



## Day 12



## Appellation Boutique Wine Tour

Experience a tasting journey through three of Central Otago's incredibly scenic and varying wine sub-regions; Gibbston, Bannockburn and Cromwell. Visit three boutique vineyards, tasting their unique cool climate wines and discover why the Central Otago region has become world-renowned in its own right. Indulge at a fourth vineyard restaurant for a platter-style lunch, savouring the finest and freshest produce, accompanied with a wine flight.

There will also be an opportunity to retrace history when you stroll through the charming historical settlement of Old Cromwell.

### Your accommodation: Millennium Hotel Queenstown

Right in the heart of the action, the Millennium Hotel is just minutes from Queenstown's central shopping and entertainment district. Outdoor activities such as bungy jumping, white water rafting and jet boating are just some of the easily accessible activities nearby in New Zealand's adventure capital.

Meals included: Breakfast, Lunch



## Day 13



### Milford Sound Business Class with Real NZ and Altitude Tours - Includes Canapes

Embrace the spirit of Milford Sound in this exclusive tour, where rich storytelling and intimate encounters with the land and sea create an experience like no other. From the moment you step onto your high-end transfer in Queenstown, your journey becomes part of the adventure, with cultural storytelling, scenic stops, and exceptional service. Spacious reclining seats, curated refreshments, and panoramic windows ensure you travel in style. In Milford Sound, immerse yourself in the iconic beauty with a glass of New Zealand bubbles in hand, aboard the masterfully redesigned MV Sinbad. Relax in an elegant lounge, indulge in a generous selection of canapés, and take in the fresh Fiordland air from the top deck as expert storytelling brings the history, wildlife, and legends of this extraordinary place to life.

It is important you read and understand the risks associated with this activity. For more information, see [here](#).

### Your accommodation: Millennium Hotel Queenstown

Right in the heart of the action, the Millennium Hotel is just minutes from Queenstown's central shopping and entertainment district. Outdoor activities such as bungy jumping, white water rafting and jet boating are just some of the easily accessible activities nearby in New Zealand's adventure capital.

Meals included: Breakfast, Lunch



## Day 14



### Wilderness Jet Experience with Dart River Safaris

Journey deep into the heart of the world-renowned Mt Aspiring National Park, where myth, heritage, and fantasy come to life. As one of Queenstown's most exhilarating activities, the Wilderness Jet adventures on a spectacular journey deep into the heart of the world-renowned Mount Aspiring National Park. It is important you read and understand the risks associated with this activity. For more information please see [here](#).



## TSS Earnslaw Cruise and Walter Peak Gourmet BBQ Dinner

Enjoy a quintessential Kiwi experience, a delicious gourmet BBQ buffet meal, and a farm demonstration in a stunning lakeside setting. Take in the stunning views of Lake Wakatipu and its surroundings as you cruise across the lake to the historic Walter Peak high country farm aboard the TSS Earnslaw Steamship. Enjoy the ambiance of the heart of the stately homestead while your Colonel's Homestead Restaurant chef prepares a gourmet BBQ dinner. Your seasonal menu includes an extensive selection of local New Zealand produce, including succulent meats and a selection of delicious vegetables and salads. Complete your meal with your choice of delicious desserts, or New Zealand cheeses. After dinner, watch the farm dogs in action with a sheep-herding demonstration and say hello to the other farm animals. Finally, cruise home under the southern stars and enjoy the fresh night air as the lights of Queenstown draw ever closer.

### Your accommodation: Millennium Hotel Queenstown

Right in the heart of the action, the Millennium Hotel is just minutes from Queenstown's central shopping and entertainment district. Outdoor activities such as bungy jumping, white water rafting and jet boating are just some of the easily accessible activities nearby in New Zealand's adventure capital.

Meals included: Breakfast, Speciality Dinner



## Day 15



### Queenstown to Franz Josef with Glacier Shuttles

Leaving Queenstown, travel past picturesque scenery of massive mountain peaks and crystal-clear blue lakes. Journey across the Haast Pass to the other side of the Southern Alps, the landscape changes dramatically. Enter the wild and wonderful West Coast, a remote and unspoiled region. Wind your way past native rainforest, rocky coastlines and powerful waterfalls. Your journey concludes in the village of Franz Josef, your next base for exploration.

### Glacier Valley Shuttle

You'll be transferred up the Franz Josef Valley to the road end, where you'll have the opportunity to walk to a viewing platform with views of the glacier. Alternatively, you can enjoy one of the other scenic short walks in the area.

### Your accommodation: Scenic Hotel Franz Josef Glacier

Only a breath away from the Franz Josef Glacier, Scenic Hotel is located in the heart of Franz Josef Village. Here you will find all of the amenities you would expect, as well as being close to the shops, restaurants and activities on offer in the beautiful Westland region.

Meals included: Breakfast



## Day 16



### Franz Josef to Greymouth Train Station with Hokitika Scenic Tours

Head north from Franz Josef through to the historic gold mining region of Hokitika. Known for its Pounamu (New Zealand Greenstone) this seaside town has a rich history dating back to the 1860's. Continue on to Greymouth, the largest town on the West Coast and the starting point for the next leg of your journey - the TransAlpine Scenic Train.

### TransAlpine Scenic Train: Greymouth to Christchurch

Considered one of the world's great train journeys, the TransAlpine Scenic Train takes you from Greymouth to Christchurch. Travel across the South Island from the west to the east coast through Arthur's Pass National Park. From the comfort of your carriage see lush beech forest, deep river valleys and the spectacular peaks of the Southern Alps. Descend to the windswept Canterbury Plains before arriving in the city of Christchurch.

## Shared Transfer from Christchurch Train Station to Christchurch CBD Accommodation with Christchurch Touring Company

On arrival at the Christchurch railway station, you will be met by a driver and transferred to your Christchurch accommodation.

---

### Your accommodation: Sudima Christchurch City

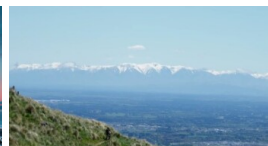
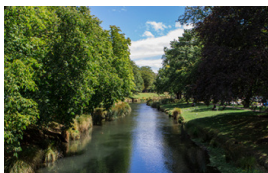
Sudima Christchurch City is a brand new 5-star boutique hotel, ideally located on Victoria Street. Amidst an array of cafes, restaurants and bars, stay only a martini olive pips' throw from beautiful Hagley Park and Christchurch's CBD. Experience the garden city in comfort and style.

Meals included: Breakfast



---

## Day 17



## Private Transfer from Christchurch Accommodation to Christchurch International Airport with Christchurch Touring Company

A private transfer will collect you from your accommodation and transfer you to Christchurch International Airport in time for your departing flight.

---



## Tour details

Departures:	Daily
Tour type:	Independant Bus & Coach
Starts:	Auckland
Finishes:	Christchurch
Tour length:	17
Accommodation:	Hotel 4 star
Car/transport type:	

---

## Accommodation summary

Day 1	Grand Millennium Auckland
Day 2	Copthorne Hotel and Resort Bay of Islands
Day 3	Copthorne Hotel and Resort Bay of Islands
Day 4	Grand Millennium Auckland
Day 5	Millennium Hotel Rotorua
Day 6	Millennium Hotel Rotorua
Day 7	Bolton Hotel Wellington
Day 8	Sudima Christchurch City
Day 9	Hermitage Hotel, Wakefield Wing Superior Room
Day 10	Millennium Hotel Queenstown
Day 11	Millennium Hotel Queenstown
Day 12	Millennium Hotel Queenstown
Day 13	Millennium Hotel Queenstown
Day 14	Millennium Hotel Queenstown
Day 15	Scenic Hotel Franz Josef Glacier
Day 16	Sudima Christchurch City