

## A Taste of the South (Reversed)

This 8 day scenic route will give you a wonderful 'taste' of the South Island's beauty and diversity. Beginning with the world famous Tranz Alpine Scenic Train journey from Christchurch to the West Coast town of Greymouth. From there you will explore the countryside of the West Coast, Otago, Southland, Fiordland and Canterbury. Along the way highlights include the glaciers of the West Coast, adventure in Queenstown, Te Anau the gateway to Fiordland National Park and magnificent Mt Cook National Park. You'll also explore the south's two largest cities of Christchurch and Dunedin.



Starts in: Christchurch  
 Finishes in: Christchurch  
 Length: 8days / 7nights  
 Accommodation: Motels  
 Can be customised: Yes

This itinerary can be customised to suit you perfectly. We can add more days, remove days, change accommodations, mix it up, add activities to suit your interests or simply design and create something from scratch. Call us today to get your custom New Zealand itinerary underway.



### Inclusions:

- Includes: Late model rental cars
- Includes: Fully inclusive rental car insurance (excess may apply)
- Includes: Unlimited kms
- Includes: GPS navigation
- Includes: Airport & ferry terminal rental car fees
- Includes: Additional drivers
- Includes: Comprehensive tour pack (detailed itinerary, driving instructions, map/guidebooks, brochures)
- Includes: 24/7 support while touring New Zealand
- Included activity: Private transfer Christchurch International Airport to your accommodation
- Included activity: Electronic Travel Guide and In-Country Support App
- Included activity: Private transfer accommodation to Christchurch Train Station with Christchurch Touring
- Included activity: TranzAlpine Scenic Train: Christchurch to Greymouth

## Day 1



### Private transfer Christchurch International Airport to your accommodation

On arrival, you will be met by a private driver and transferred to your Christchurch accommodation.

---

### Welcome to Christchurch City

Christchurch New Zealand's garden city is steadily being transformed into a vibrant urban destination. Encompassing a large green belt, it is known for its wide tree lined avenues and lush gardens. A great way to explore the city or easy way to see the sights or ride the historic trams across town to the renowned botanic gardens and the unique cardboard Transitional Cathedral, that's right it is built of cardboard!

---

### SUGGESTED ACTIVITY - Discover Christchurch Afternoon Tour

A half day sightseeing tour of Christchurch highlighting both the damage to the city inflicted by several large earthquakes in 2010 and 2011 and the rebuild which is currently in progress, together with the surviving beauty of the city and the historical landmarks. Experience the grand architecture, beautiful gardens and scenic viewpoints on a half-day city tour of Christchurch.

The tour commences in the central city of Christchurch and covers the area which was completely devastated by the Christchurch earthquakes in February 2011. The guide will explain both the history of the city and the effects of the earthquake. On leaving the inner city, the tour travels to Mona Vale a historic homestead and gardens. Then you will travel to the Sign of the Takahe, a historic building with a lookout providing spectacular views over the city, Canterbury Plains and to the Southern Alps. The tour then travels via the Port Hills and Lyttelton Harbour by way of the Sign of the Kiwi and Governors Bay to the Port of Lyttelton. The tour proceeds through the Lyttelton harbour tunnel to the seaside suburb of Sumner and cave rock before returning to the central city where the tour will conclude.

---

### Your accommodation: Quest on Cambridge

Quest on Cambridge serviced apartment-style hotel rooms offer guests a relaxed and comfortable Christchurch accommodation experience. Each room has an open-plan living area, a fully equipped kitchen, and natural light. Quest on Cambridge is a short walk from the south shopping center and only a short walk to the Botanic Gardens.



## Day 2



### Private transfer accommodation to Christchurch Train Station with Christchurch Touring

A private driver will collect you from your accommodation and transfer you to the Christchurch train station in time for your train journey.

---

### TranzAlpine Scenic Train Christchurch to Greymouth

Your early morning departure is rewarded with incredible scenery today onboard the TranzAlpine Scenic Train, considered one of the world's great train journeys. It travels between Christchurch and Greymouth, from one coast of New Zealand to the other. From your carriage you'll see the fields of the Canterbury Plains and farmland, followed by the spectacular gorges and river valleys of the Waimakariri River. Your train then climbs into the Southern Alps before descending through the lush beech rain forest to the West Coast town of Greymouth, a great base for visits to Punakaiki and the West Coast glaciers.

---

### Collect your rental car

This tour can be priced with any of the rental cars available in our fantastic range, from economy hatchbacks to prestige saloons and SUV's.

---

## Greymouth to Franz Josef

Leaving Greymouth you will head south into Glacier Country. Pass through Hokitika and be sure to take a detour to the spectacular Hokitika Gorge, the famous turquoise-coloured river surrounded by native bush-clad cliffs.

Continue on through Ross, a historic gold mining town where several buildings still remain intact and still to this day one of New Zealand's working gold mines. As you travel further down the coast you'll also go through Hari Hari, the town where Guy Menzies, the first person to fly solo over the Tasman crash landed. Heading south along the mighty West Coast highway you pass through ancient temperate rainforests while getting sneak peeks of the wild west coast beach occasionally. Whataroa is the next town where you can see one of the world's rarest birds, the New Zealand white heron or Kotuku nest at the Waitangi Roto Nature Reserve, and guided tours from October to March will take you there. Arriving in Franz Josef township is a lively place with a great atmosphere, restaurants including Blue Ice and Snakebite are worth a meal. This small town is packed with walks, adventure, and scenic activities, something for everyone. &nbsp;

---

### SUGGESTED ACTIVITY - Mountain Scenic Spectacular Flight with The Helicopter Line

The premier flight! Experience two of New Zealand's finest national parks and encounter the gigantic expanse of both the Franz Josef and Fox Glaciers. Take in the towering ice formations and top it off with a snow landing and the chance to set foot on snow and breath the clean alpine air. Along the way, get to see the Tasman Glacier and get close to Mount Cook, New Zealand's highest peak. Duration of helicopter flight is 40 minutes.

---

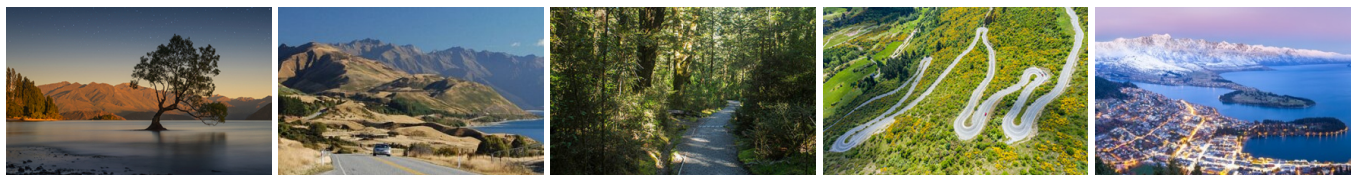
### Your accommodation: Punga Grove Motel & Suites

Punga Grove is right in the heart of Franz Josef Glacier village and offers affordable and stylish accommodation in a beautiful rainforest setting.



---

## Day 3



### Franz Josef to Queenstown (via Wanaka)

Heading south you pass through the second glacier town of Fox Glacier before heading along the coast and more classic West Coast bush scenery.&nbsp;Be sure you stop at the Paringa Salmon Farm for lunch or a refreshment make sure you feed the fish, it's very impressive. At Knights Point Lookout elephant seals can often be seen basking on the sandy beaches at the far end of the point.

Crossing the massive Haast River you turn inland and head into the valley climbing through mountains littered with waterfalls.

The Haast Valley offers a spectacular view of the river and its enormous power. The Blue Pools near Makarora are a great 30-minute walk.

Lakes Wanaka and Hawea guide you into the township of Wanaka before you head over New Zealand's highest sealed road, Crown Range Road before dropping into Queenstown. This drive should be planned as a whole day to really enjoy the scenery and to allow time to explore the walks, and many stops en route.

---

### SUGGESTED ACTIVITY - Shotover Canyon River Jet Boat Adventure

Riding the iconic 'Big Red' Jet Boat through the narrow Shotover Canyon is an exhilarating experience not to be missed. Your skilled jet boat driver pushes the boat to 85 kph, skimming across shallow water and past towering canyon walls. This 25 minute white water ride includes 360 degree spins and maximum thrills.

---

### SUGGESTED ACTIVITY - TSS Earnslaw cruise to Walter Peak including gourmet BBQ dinner and a farm tour

Enjoy a quintessential Kiwi experience, a delicious gourmet BBQ buffet meal and a farm demonstration in a stunning lakeside setting. Take in the stunning views of Lake Wakatipu and its surroundings as you cruise across the lake to the historic Walter Peak high country farm aboard the TSS Earnslaw Steamship.

Enjoy the ambience of the heart of the stately homestead while your Colonel's Homestead Restaurant chef prepares a gourmet BBQ dinner. Your seasonal menu includes an extensive selection of local New Zealand produce, including succulent meats and a selection of delicious vegetables and salads. Complete your meal with your choice of delicious desserts, New Zealand cheeses, tea and coffee.

After dinner, watch the farm dogs in action with a sheep-herding demonstration and say hello to the other farm animals. Finally, cruise home under the southern stars and enjoy the fresh night air as the lights of Queenstown draw ever closer.

## Your accommodation: Scenic Suites Queenstown

Scenic Suites Queenstown offers guests exquisite style, comfort and spectacular views over Lake Wakatipu and the Southern Alps. The hotel prides itself on its four star hospitality that will make your stay in Queenstown even more memorable.



---

## Day 4



### Queenstown to Te Anau

Following the shores of Lake Wakatipu, The Remarkables mountain range towers over you as you approach the township of Kingston. You'll venture into Southland before crossing the rolling tussock lands of Mossburn (deer capital of New Zealand) and shortly arriving at Te Anau, the gateway to Fiordland National Park.

---

### SUGGESTED ACTIVITY - Te Anau Glowworm Caves with RealNZ

Begin your Te Anau Glowworm experience with a scenic cruise across Lake Te Anau on board the luxury catamaran, Luminosa, to the western side of the lake. On arrival, you'll enter the caves through Cavern House, where informative displays detail the history of this 12,000 year old underground network.

You'll then explore by limestone pathway while your guide points out hidden whirlpools, sculpted rock formations and a rushing underground waterfall. See a magical display of thousands of glowworms as you glide through the darkness in a small boat.

---

### Your accommodation: Lakefront Lodge

Stylish self contained motel units less than one minute walk from Te Anau Lakefront. Close to shops, cafes and restaurants.



---

## Day 5



### Te Anau to Dunedin

The drive from Te Anau to Dunedin takes you through classic Southland farmland scenery but if you want to spend the whole day exploring a little off the beaten path than taking the Southern Scenic Route through The Catlins is highly recommended. Following the incredible Otago coastline to Invercargill the route passes through Manapouri and onto Tuatapere before Colac Bay and the fishing town of Riverton. From Invercargill the route hugs the coastline and there are many side-trips to secluded and deserted beaches and bays to explore before you arrive into the remarkable Edwardian City of Dunedin.

---

### SUGGESTED ACTIVITY - Monarch Wildlife Cruise from Wellers Rock

An unforgettable experience viewing rare and fascinating wildlife. Board the Monarch Boat and take in the fascinating sight of the Northern Royal Albatross as it comes into nest on the spectacular cliffs of Taiaroa, Otago Peninsula. You'll also see eight other species of birds including sooty shearwaters and petrels as well as sea lions and fur seals and if you're lucky dolphins and whales.

### Your accommodation: Motel on York

Motel on York is located in the heart of Dunedin city. The property offers superior accommodation only 300 metres away from cafes and restaurants.



---

## Day 6



### Dunedin to Mt Cook National Park

Heading north from Dunedin your first stop should be Moeraki to explore the famous and unique boulders strewn on the beach. Before heading inland along the Waitaki Valley you pass through the historic township of Oamaru and its Stone buildings. Take time to head into the old quarter and if your timing is right you may get to see some of the local resident little blue penguins. The Waitaki Valley makes a large contribution to New Zealand's electricity supply with its 3 hydro dams. Arriving into Omarama you are now truly in the high country but don't think these vast empty lands are useless, these are some of the country's most productive merino sheep stations. The turquoise waters of Lake Pukaki guide you the final 45 minutes to Aoraki Mount Cook Village.

Please note: There are no food shops at Mount Cook, and dinner options are limited to one restaurant. If you wish to self-cater, you must stock up before arriving in Mount Cook, or make dinner reservations in advance.

---

### SUGGESTED ACTIVITY - Glacier Explorers Mt. Cook

Experience 500 year old icebergs up-close on the Mt Cook terminal lake. The Glacier Explorers tour is the only one of its kind in New Zealand and one of only three in the world! Very few glaciers terminate into lakes and even fewer of them are accessible. See towering ice cliffs and floating icebergs from the safety of a specially designed boat. These boats provide a safe way to view unseen and inaccessible areas of New Zealand's largest glacier The Tasman.

---

### Your accommodation: Mt Cook Motel

Mt Cook Motel is located in the centre of Mt. Cook village. The self-contained units are spacious and all are surrounded by alpine mountain views.



---

## Day 7



### Aoraki Mt Cook National Park to Christchurch

Leaving Aoraki Mt Cook National Park, travel a short distance before stopping at the visitor centre on the southern shores of Lake Pukaki. Learn about the formation of the region and take in the spectacular views of Mount Cook. Lake Tekapo also displays the same reflective qualities of Lake Pukaki, making the waters a bright turquoise. You'll go through the small town of Tekapo, home to some of the most photographed subjects in the country, the Church of the Good Shepherd and the Collie Dog statue. It's a great place to take a scenic flight, enjoy a guided horse trek, a boat trip on the pristine lake or just marvel at the magnificent views. From here you travel through Burkes Pass and into the rich farming valley that surrounds Geraldine. Continue on across the vast Canterbury Plains to arrive in Christchurch City, your destination for the night.

## Your accommodation: Quest on Cambridge

Quest on Cambridge serviced apartment-style hotel rooms offer guests a relaxed and comfortable Christchurch accommodation experience. Each room has an open-plan living area, a fully equipped kitchen, and natural light. Quest on Cambridge is a short walk from the south shopping center and only a short walk to the Botanic Gardens.



---

## Day 8



### Return your vehicle to Christchurch Airport

Explore more of Christchurch before dropping your rental car at the airport depot and continuing your onward journey.

---

## Tour details

Departures:	Daily
Tour type:	South Island Self Drive
Starts:	Christchurch
Finishes:	Christchurch
Tour length:	8
Accommodation:	Motels
Car/transport type:	

---

## Included activities

Includes	Private airport transfers
Includes	Private train station transfers
Includes	TranzAlpine Train from Christchurch to Greymouth

---

## Accommodation summary

Day 1	Quest on Cambridge
Day 2	Punga Grove Motel & Suites
Day 3	Scenic Suites Queenstown
Day 4	Lakefront Lodge
Day 5	Motel on York
Day 6	Mt Cook Motel
Day 7	Quest on Cambridge