

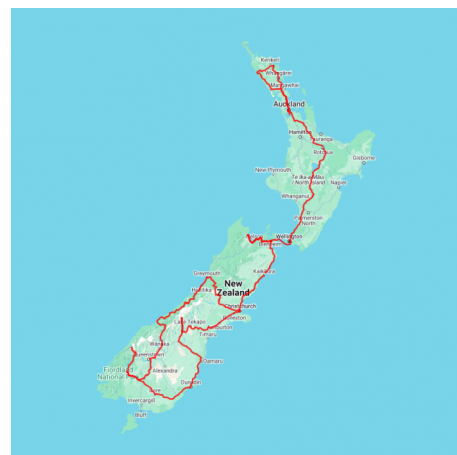


## Northbound Navigator

In just over 3 weeks, you'll experience an amazing diversity in scenery, landscape and geography as you journey from the alpine regions of the South Island to the sub-tropical Bay of Islands in the North Island. Along the way you have many two night stays allowing you the time to relax and soak up your surroundings which will vary from cosmopolitan cities to national parks and everything in between.

Starts in: Christchurch  
Finishes in: Auckland  
Length: 23days / 22nights  
Accommodation: Motels  
Can be customised: Yes

This itinerary can be customised to suit you perfectly. We can add more days, remove days, change accommodations, mix it up, add activities to suit your interests or simply design and create something from scratch. Call us today to get your custom New Zealand itinerary underway.



### Inclusions:

Includes: Late model rental cars

Includes: Unlimited kms

Includes: Airport & ferry terminal rental car fees

Includes: Comprehensive tour pack (detailed itinerary, driving instructions, map/guidebooks, brochures)

Included activity: Private Transfer Christchurch International Airport to Christchurch Accommodation

Included activity: Ocean's Cabin with Whale Watch Kaikōura

Included activity: Shared Transfer from Christchurch CBD Accommodation to Christchurch Train Station with Christchurch Touring Company

Included activity: One Hour Private Tub with Waiho Hot Tubs

: 1 lunch

Includes: Fully inclusive rental car insurance (excess may apply)

Includes: GPS navigation

Includes: Additional drivers

Includes: 24/7 support while touring New Zealand

Included activity: Electronic Travel Guide and In-Country Support App

Included activity: Interislander Ferry Picton to Wellington

Included activity: TranzAlpine Scenic Train: Christchurch to Greymouth Scenic Plus with Great Journeys NZ

Included activity: Milford Sound Cruise with Real NZ - Lunch Included

## Day 1



### Private Transfer Christchurch International Airport to Christchurch Accommodation

On arrival, you will be met by a private driver and transferred to your Christchurch accommodation.

### Welcome to Christchurch City

Christchurch New Zealand's garden city is steadily being transformed into a vibrant urban destination. Encompassing a large green belt, it is known for its wide tree lined avenues and lush gardens. A great way to explore the city or easy way to see the sights or ride the historic trams across town to the renowned botanic gardens and the unique cardboard Transitional Cathedral, that's right it is built of cardboard!

### Your accommodation: Bella Vista Christchurch

Bella Vista Motel Christchurch offers a great range of comfortable modern units with excellent facilities. Enjoy the convenience of being located in close proximity to the Christchurch CBD, shops, entertainment and other activities.



## Day 2



### Shared Transfer from Christchurch CBD Accommodation to Christchurch Train Station with Christchurch Touring Company

You will be met by a driver at your Christchurch Accommodation and transferred to the railway station.

### TranzAlpine Scenic Train: Christchurch to Greymouth Scenic Plus with Great Journeys NZ

Great Journeys New Zealand's Scenic Plus carriage provides comfort and vast panoramic views, making our TranzAlpine scenic train journey the perfect way to explore coast-to-coast through the 'Great Divide' and the indomitable spine of mountains that partitions New Zealand's South Island. Scenic Plus offers an all-inclusive experience on the unique TranzAlpine scenic rail journey to invigorate all the senses! Feast your eyes on epic scenery while you savour regionally inspired cuisine paired with sumptuous wine and beer all from the comfort of your luxurious seat – a hosted dining experience like no other. Quite simply, we have done everything we can to ensure you feel at peace as you sink back in your seat and soak up the scenery.

### Collect Rental Car

Choose a car to best suit your needs from our fantastic rental car range. From compact economy, hatchbacks to prestige SUVs.

### Greymouth to Franz Josef

Leaving Greymouth you will head south into Glacier Country. Pass through Hokitika and be sure to take a 50 minute detour to the spectacular Hokitika Gorge, the famous turquoise-coloured river surrounded by native bush-clad cliffs. Continue on through Ross, a historic gold mining town where several buildings still remain intact and still to this day one of New Zealand's working gold mines. As you travel further down the coast you'll also go through Hari Hari, the town where Guy Menzies, the first person to fly solo over the Tasman crash landed. Heading south along the mighty West Coast highway you pass through ancient temperate rainforests while getting sneak peeks of the wild west coast beach occasionally. Whataroa is the next town where you can see one of the world's rarest birds, the New Zealand white heron or Kotuku nest at the Waitangi Roto Nature Reserve, and guided tours from October to March will take you there. Arriving in Franz Josef township is a lively place with a great atmosphere, restaurants including Blue Ice and Snakebite are worth a meal. This small town is packed with walks, adventure, and scenic activities, something for everyone.



## SUGGESTED ACTIVITY - TranzAlpine Scenic Plus Addon - KiwiRail

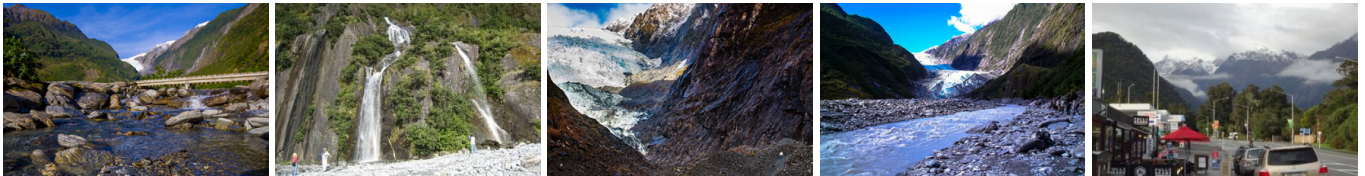
Feel like luxurious service, exclusive meals, inclusive drinks and priority check-in and boarding? The Scenic Plus add-on option is for you. Enjoy personal service with panoramic windows, spacious carriages and comfortable seating. The exclusive open-air viewing carriage is available if you feel like capturing the ultimate photo or simply wish to experience the great outdoors whilst travelling through the Southern Alps. Your food is prepared exclusively in a kitchen carriage, with paired drinks and a paddock-to-plate regionally inspired food menu all your senses will be fully engaged on this journey.

### Your accommodation: Punga Grove Motel & Suites

Punga Grove is right in the heart of Franz Josef Glacier village stylish accommodation in a beautiful rainforest setting.



## Day 3



### Explore Franz Josef

Franz Josef is a small yet lively town in the heart of New Zealand's West Coast, best known for its spectacular 12 km-long glacier. The township is surrounded by lush, rainforest-clad mountains and has a vibrant atmosphere with plenty to explore. A variety of scenic walking trails offer incredible views of the glacier, but for a truly up-close experience, a licensed helicopter tour is the only way to set foot on the ice. Beyond the glacier, unwind in the rejuvenating Hot Pools or visit the West Coast Wildlife Centre to spot rare kiwi birds. If you're in the mood for a more relaxed day, the township is home to charming souvenir and gift shops, as well as great dining spots like SnakeBite Brewery and King Tiger. Whether you're chasing adventure or relaxation, Franz Josef is a stunning blend of wild beauty and welcoming hospitality.

## SUGGESTED ACTIVITY - Twin Glacier Scenic Helicopter Flight with The Helicopter Line

A spectacular scenic flight soaring over two of New Zealand's most famous glaciers, Fox and Franz Josef. Landing at the head of one and view the incredible sight of this frozen river as it winds its way through ancient carved valleys.

### One Hour Private Tub with Waiho Hot Tubs

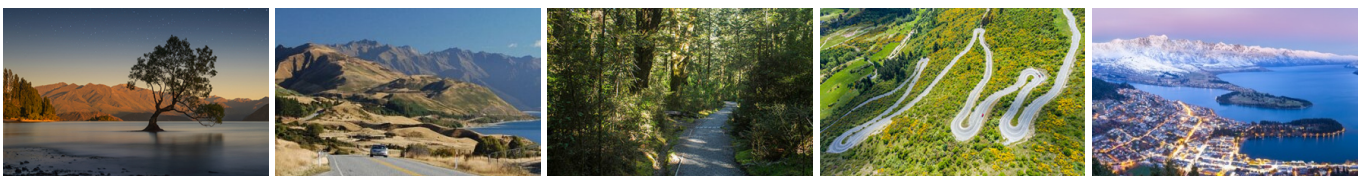
Relax and unwind in the soothing comfort of fresh, warm water and aromatic wood smoke. Enjoy your own private tubs, nestled in a lush rainforest setting on New Zealand's West Coast. These wood-fired hot tubs combine the soothing comfort of warm water with the unique atmosphere of wood smoke to give you an unforgettable experience.

### Your accommodation: Punga Grove Motel & Suites

Punga Grove is right in the heart of Franz Josef Glacier village stylish accommodation in a beautiful rainforest setting.



## Day 4



## Franz Josef to Queenstown (via Wānaka)

Heading south you pass through the second glacier town of Fox Glacier before heading along the coast and into more classic West Coast bush scenery. We can recommend a stop at Knights Point Lookout elephant seals can often be seen basking on the sandy beaches at the far end of the point. Crossing the massive Haast River you turn inland and head into the valley climbing through mountains littered with waterfalls. The Haast Valley offers a spectacular view of the river and its enormous power. Along the way there is ample opportunity to admire Aspiring National Park and a stop at Roarig Billy Falls will leave you in awe. The Blue Pools near Makarora are a great 30-minute walk. The road from Makarora leads to Lakes Wānaka and Hāwea which will guide you into the stunning lakeside township of Wānaka before heading over New Zealand's highest sealed road, Crown Range Road and dropping into the Wakatipu basin, home to Queenstown. .

---

### SUGGESTED ACTIVITY - TSS Earnslaw Cruise and Walter Peak Gourmet BBQ Dinner

Enjoy a quintessential Kiwi experience, a delicious gourmet BBQ buffet meal, and a farm demonstration in a stunning lakeside setting. Take in the stunning views of Lake Wakatipu and its surroundings as you cruise across the lake to the historic Walter Peak high country farm aboard the TSS Earnslaw Steamship. Enjoy the ambiance of the heart of the stately homestead while your Colonel's Homestead Restaurant chef prepares a gourmet BBQ dinner. Your seasonal menu includes an extensive selection of local New Zealand produce, including succulent meats and a selection of delicious vegetables and salads. Complete your meal with your choice of delicious desserts, or New Zealand cheeses. After dinner, watch the farm dogs in action with a sheep-herding demonstration and say hello to the other farm animals. Finally, cruise home under the southern stars and enjoy the fresh night air as the lights of Queenstown draw ever closer.

---

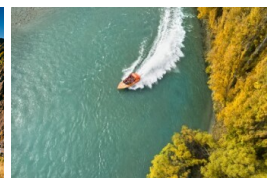
### Your accommodation: Bella Vista Queenstown

Bella Vista Motel Queenstown is an easy 3-minute walk to Queenstown centre. Offering mountain views and great facilities for visitors to the alpine resort town.



---

## Day 5



### Explore Queenstown

Well-known as New Zealand's 'adventure capital', Queenstown is home to a range of adventures, from the world's first and most famous bungy jumps to jet boat thrills, white-water rafting, and skydiving. However, Queenstown offers far more than a fast-paced, action-packed holiday. Settled on the shores of beautiful Lake Wakatipu beneath a soaring panorama of the Remarkables Mountain Range, this alpine town is surrounded by many historic, gastronomic, and scenic wonders. Take a stroll through the beautiful lakefront parks and gardens, browse through market stalls on weekends, dine in wonderful al-fresco restaurants, or ride on the 100-year-old historic Steamship - TSS Earnslaw to Walter Peak Station. Take the Queenstown Gondola up to Bob's Peak and soak up the panoramic views of the magnificent lake and mountain ranges. And after all of that, if you do want the adrenaline rush, Queenstown is known for taking your pick from the Shotover Jet, Canyon Swing, Zipline, Luge, or Heli-hike.

---

### SUGGESTED ACTIVITY - Wilderness Jet Experience with Dart River Safaris

Journey deep into the heart of the world-renowned Mt Aspiring National Park, where myth, heritage, and fantasy come to life. As one of Queenstown's most exhilarating activities, the Wilderness Jet adventures on a spectacular journey deep into the heart of the world-renowned Mount Aspiring National Park.

---

### Your accommodation: Bella Vista Queenstown

Bella Vista Motel Queenstown is an easy 3-minute walk to Queenstown centre. Offering mountain views and great facilities for visitors to the alpine resort town.





## Day 6



### Queenstown to Te Anau

Passing through the bustling suburb of Frankton, follow the shores of Lake Wakatipu. The Remarkables mountain range towers over you on the stretch of road known as "The Devil's Staircase" leading you to the township of Kingston. You'll venture into Southland before crossing the rolling tussock lands of Mossburn (deer capital of New Zealand) and shortly arriving at Te Anau, the gateway to Fiordland National Park.

### Your accommodation: Lakefront Lodge

Stylish self-contained motel units less than a minute walk from Te Anau Lakefront. Enjoy a close walk to shops, cafes and restaurants.



## Day 7



### Te Anau to Milford Sound, returning to Te Anau

The magnificent Milford Road leading to Milford Sound offers some of the most beautiful and iconic scenery in the country. Countless photo opportunities mean this drive should not be rushed. From crystal clear lakes and towering mountains to lush glacier-formed meadows, this area is abundant with picture-perfect scenes. Continue on through the Homer Tunnel, an engineering marvel at 1219 meters long. Arriving in the village of Milford, you will be greeted with an amazing view of Mitre Peak. A day cruise into the heart of the sound is not to be missed. You'll learn about how this magnificent area was formed and experience the wonder of the falls that line the Fjord before back-tracking the way you came.

### Milford Sound Cruise with Real NZ - Lunch Included

Get up close and personal with Milford Sound on a leisurely cruise of this spectacular fiord. From thundering waterfalls to sky-high mountains to lush rainforests, Milford has it all. Experience the spray of a waterfall as you cruise close to sheer rock faces. Informative, participative and relaxed, this is the perfect way to experience Milford Sound to the fullest.

### Your accommodation: Lakefront Lodge

Stylish self-contained motel units less than a minute walk from Te Anau Lakefront. Enjoy a close walk to shops, cafes and restaurants.

Meals included:        Lunch



## Day 8



## Te Anau to Dunedin

The drive from Te Anau to Dunedin takes you through classic Southland farmland scenery to Gore, the official home of country music in New Zealand. Continuing onward to the East Coast you'll pass through small farming communities and then on to State Highway 1. Balclutha is the next landmark town and gateway to the seaside community of The Catlins. From here it is a short drive through to Dunedin, known in Māori as Ōtepoti and known worldwide as "Edinburgh of the South".

---

### Your accommodation: Motel on York

Motel on York is located in the heart of Dunedin city. The property offers superior accommodation only 300 metres away from cafes and restaurants.



---

## Day 9



### Explore Dunedin and the Otago Peninsula

Known as the Edinburgh of the South, Dunedin City has a heavy Scottish influence. Surrounded by rugged coastal plains and windswept beaches it's home to an eclectic mix of historical and modern architecture as well as industrial technology. Renowned for its Flemish Baroque-inspired 'gingerbread house' Railway Station, this university town is bustling with life. Head to the Saturday farmers market held in the aforementioned railway grounds for a taste of organic produce, handmade crepes and local honey. Explore the many cafes and wine bars in The Octagon, then continue on a self-guided walking tour of the internationally acclaimed Street Art dotted around the city. Drive to the coast and watch the freighters passing in the distance while you sunbathe, or hire a mountain bike and test your legs on one of the many trails available in the area. For a more immersive historical experience, follow the coast to New Zealand's only castle, Larnach Castle. On your way back be sure to head to the Otago Peninsula to see the largest mainland Albatross colony in the world.

---

### SUGGESTED ACTIVITY - Wildlife Peninsula Encounter Tour and Wildlife Cruise with Monarch

Join a small-group bus tour led by a local guide across the Otago Peninsula, featuring stunning harbour views, rural landscapes, and unique wildlife. Visit a remote beach to spot sea lions, take a Monarch Wildlife Cruise to see albatross, seals, and rare seabirds, and explore a Yellow-eyed Penguin conservation reserve with hidden viewing hides. This unforgettable journey blends breathtaking scenery with intimate wildlife encounters before a relaxed return to Dunedin.

---

### Your accommodation: Motel on York

Motel on York is located in the heart of Dunedin city. The property offers superior accommodation only 300 metres away from cafes and restaurants.



---

## Day 10



### Dunedin to Mt Cook National Park

Heading north from Dunedin your first stop should be Moeraki to explore the famous and unique boulders strewn on the beach. Before heading inland along the Waitaki Valley you pass through the historic township of Oamaru and its Stone buildings. Take time to head into the old quarter and if your timing is right you may get to see some of the local resident little blue penguins. The Waitaki Valley makes a large contribution to New Zealand's electricity supply with its 3 hydro dams. Arriving into Omarama you are now truly in the high country but don't think these vast empty lands are useless, these are some of the country's most productive merino sheep stations. The turquoise waters of Lake Pukaki guide you the final 45 minutes to Aoraki Mount Cook Village

---



## SUGGESTED ACTIVITY - Glacier Explorers

Experience 500-year-old icebergs up close on the Aoraki-Mt Cook terminal lake. The Glacier Explorers tour is the only one of its kind in New Zealand and one of only three in the world! Very few glaciers terminate into lakes and even fewer of them are accessible. See towering ice cliffs and floating icebergs from the safety of a specially designed boat. These boats provide a safe way to view unseen and inaccessible areas of New Zealand's largest glacier The Tasman.

---

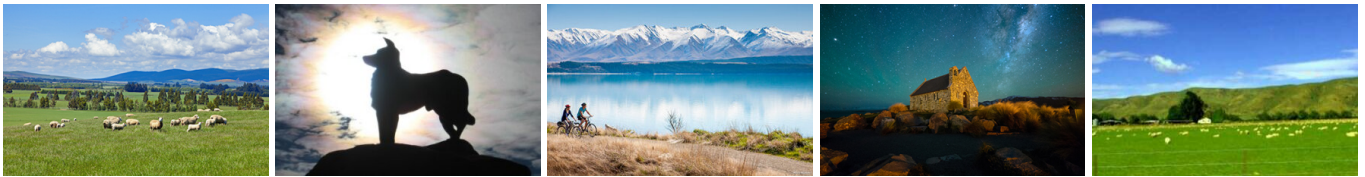
### Your accommodation: Mt Cook Motel

Mt Cook Motel, nestled in the heart of Mt. Cook Village, offers spacious self-contained units that provide comfort and convenience. Each unit is surrounded by breathtaking alpine mountain views, making it the perfect retreat for nature lovers and adventurers alike.



---

## Day 11



### Aoraki-Mt Cook National Park to Christchurch

Leaving Aoraki Mt Cook National Park, travel a short distance for a stop at the visitor centre on the southern shores of Lake Pukaki. Learn about the formation of the region and take in the spectacular views of Aoraki-Mount Cook. Along the way you'll come to Lake Tekapo which also displays the same reflective qualities as Lake Pukaki, making the waters bright turquoise. It's a great place to take a scenic flight, soak in a hot spring or just marvel at the magnificent views. From here you travel through Burkes Pass and into the rich farming valley that surrounds Geraldine. Continue across the vast Canterbury Plains to Christchurch.

---

### Your accommodation: Bella Vista Christchurch

Bella Vista Motel Christchurch offers a great range of comfortable modern units with excellent facilities. Enjoy the convenience of being located in close proximity to the Christchurch CBD, shops, entertainment and other activities.



---

## Day 12



### Christchurch to Kaikoura

The drive north from Christchurch to Kaikoura takes you through the rolling hills of North Canterbury's major wine region, the Waipara Valley. Allow time for a detour and visit Hanmer Springs for a dip in the mineral hot pools. Continue on and cross the Hawkswood Range before descending to the spectacular Kaikoura coastline - where the road hugs the ocean for the last leg of the drive.

---

### Your accommodation: The White Morph, Kaikōura

Set on the Esplanade in Kaikōura, The White Morph enjoys commanding views of the ocean and mountains. Just a 10-minute walk into town, The White Morph has been beautifully placed so that you can take in the spectacular scenery of Kaikoura while enjoying the variety of attractions on offer.



## Day 13



### Ocean's Cabin with Whale Watch Kaikōura

Experience New Zealand's only marine-based whale-watching company. Whale Watch Kaikōura offers a once-in-a-lifetime, up-close encounter with the giant Sperm Whale. You are also likely to encounter New Zealand fur seals, dolphins, and albatross. Depending on the season you may also see Pilot, Blue, and Southern Right whales as well as migrating humpbacks. Often orcas can be spotted here and the world's smallest dolphin, the Hector's, occasionally makes an appearance.

### Kaikōura to Abel Tasman National Park

Heading north from Kaikōura, the road hugs the shore for approximately 50 kilometres and offers many opportunities to view the native wildlife such as seabirds and New Zealand fur seals. One of the best seal watching locations is Ohau Point (25km north of Kaikōura), where you can observe the adults on the shoreline and the pups frolicking in the waterfall, just a short walk from the road (signposted). As you drive you will have turquoise waters of the South Pacific Ocean to your east and to the west the towering Kaikōura Ranges. Crossing the dry hills of the Marlborough ranges you head towards New Zealand's largest wine producing region. The vineyards surrounding Blenheim are a great place to stop for a wine tasting or lunch at one of the many fine restaurants, including the award winning Herzog Winery and Restaurant. A short drive from Blenheim you reach the busy port town of Picton, and it's here that the Interislander ferries arrive and depart. The town centre is quite small with plenty of shops and cafes and the waterfront area is a very pleasant place to spend time watching the activity of the ships. The Edwin Fox Maritime Centre on the wharf is worth a visit with the star attraction being the vessel the Edwin Fox, reputedly the 9th oldest ship in the world. It's also the starting point for the famous Queen Charlotte Walk. Queen Charlotte Drive travels the Marlborough Sounds coastline between Picton and Havelock. Magnificent views of the sounds can be had from many vantage points so allow plenty of time to enjoy the scenery. The highway between Nelson and Picton also crosses the Pelorus River and just at this junction is the famous and historic Pelorus Bridge. From here there are a number of forest walks with the most popular the 30 minute loop through beech, rimu and totara forest to the swing-bridge. Crossing the Bryant Range you arrive onto Tasman Bay and the city of Nelson. Motueka is a further 45 minutes along the bay and from there it's just a short drive to Kaiteriteri and Marahau, all ideal spots from which to explore the beautiful Abel Tasman National Park.

### Your accommodation: Ocean View Chalets

The Ocean View Chalets are situated on a 50-acre farmlet, slightly elevated and nestled along the bush line with panoramic sea views. Great access the National Park and close to the friendly Marahau village.



## Day 14



### Abel Tasman National Park

Abel Tasman National Park, known for its coastal hiking track has an abundance of golden beaches, inlets, and private lagoons. The park has a mild climate and is a special place to visit at any time of the year. Why not enjoy a scenic cruise through the Sounds or take a kayaking tour around its many sheltered bays? Relax to the melodious birdsong and get up close to some of the park's many animal residents, including native bats, geckos, birds, marine mammals fur seals, and dolphins.

### SUGGESTED ACTIVITY - Beaches, Bays and Seals Guided Sea Kayaking Trip with Wilsons - Lunch Included

This adventure combines Abel Tasman's stunning beaches, coastal walks, and wildlife. Starting with a Vista Cruise to Torrent Bay, you'll enjoy kayaking, a picnic lunch, and the chance to spot seals and penguins. Return via boat and, in summer, opt for an unguided walk through the beautiful Torrent Bay Lagoon and Cleopatra's Pool. After a refreshing shower at the lodge, you'll cruise back to Kaiteriteri. This tour offers a mix of nature, adventure, and relaxation. It is important you read and understand the risks associated with this activity. For more information see [here](#).



### Your accommodation: Ocean View Chalets

The Ocean View Chalets are situated on a 50-acre farmlet, slightly elevated and nestled along the bush line with panoramic sea views. Great access the National Park and close to the friendly Marahau village.



---

## Day 15



### Marahau to Picton

The drive takes you through the city of Nelson and along the coast of Tasman Bay towards the Bryant Range. The highway between Nelson and Picton also crosses the Pelorus River and just at this junction is the famous and historic Pelorus Bridge. From here there are a number of forest walks with the most popular the 30 minute loop through beech, rimu and totara forest to the swing-bridge.

Starting in the town of Havelock the Queen Charlotte Drive travels the Marlborough Sounds coastline towards the port town of Picton.

Magnificent views of the sounds can be had from many vantage points so allow plenty of time to enjoy the scenery. If you can spare the time take the narrow windy road to Portage along Mahau Sound and Kenepuru Sound with their bush clad hillsides and secluded sandy coves.

Arrive in the busy port town of Picton, and it's here that the Interislander ferries arrive and depart. The small town centre has plenty of shops and cafes and the waterfront area is a very pleasant place to spend a few hours watching the activity of the ships. The Edwin Fox Maritime Centre on the wharf is worth a visit with the star attraction being the vessel the Edwin Fox, reputedly the 9th oldest ship in the world.

---

### Interislander Ferry Picton to Wellington

The 92 km journey between Picton and Wellington takes around 3 hours and has been described as 'one of the most beautiful ferry rides in the world'. Around one hour of the cruise takes you through the Marlborough Sounds. This region of bush covered mountains, small islands, crystal clear waters and secluded bays offer remarkable photographic opportunities.

From the Cook Strait, spectacular views of the Kaikoura Ranges on the South Island can be enjoyed and often dolphins and sea birds are seen. After crossing the strait you approach Wellington Harbour and pass many interesting points such as Pencarrow Head on top of which is New Zealand's oldest lighthouse (1859). Red Rocks is home to a seal colony and Oterangi Bay is the site which recorded the country's highest ever wind speed of 268 kph (167 mph).

---

### Collect Rental Car

Choose a car to best suit your needs from our fantastic rental car range. From compact economy, hatchbacks to prestige SUVs.&nbsp;

---

### Your accommodation: Travelodge Wellington

Travelodge Wellington is superbly positioned for you to experience everything the capital has to offer.

Situated in the city centre, the hotel is just a short stroll to Lambton Quay, Wellington's premier shopping precinct and the beautiful harbour. Local attractions are a stone's throw away including Pimms Steps, Te Papa Museum, TSB Bank Arena and Westpac Stadium.



---

## Day 16



## Wellington

Wellington known in Māori as Te Upoko o Te Ika a Maui is home to New Zealand's centre of government. Often referred to as 'mini Melbourne', this windy city is a melting pot of art, culture, food, and fashion. Quirky laneway bars, underground art shows, and hipster eateries make up its inner-city vibe, while a host of sandy beaches outside the urban bustle bring a cheerful holiday feel. Head to Te Papa Museum for a history lesson and a ticket to one of its many international exhibitions or jump aboard the Wellington Cable Car - the only running funicular railway in the country. For those with an eye for boutique, fashion wander through Cuba St to sample some of the city's best vintage stores. Break for coffee at a hipster cafe and be sure to snap a pic outside the 'Beehive,' New Zealand's parliamentary debate chamber. Go behind the scenes at Weta Workshop Experience, the Oscar Award Winning design studio behind Lord Of The Rings, The Hobbit, and Avatar. If you're a foodie at heart, a two-hour round trip to Martinborough is a must-do. Take your time as you wind through spectacular wine country. For an educational day out, learn about New Zealand's native species at Zealandia, the world's first fully-fenced eco-sanctuary and home to over 40 types of endangered and native birds.

---

### SUGGESTED ACTIVITY - Lord Of The Rings Half Day Tour - Wellington

With some of the best Lord of the Rings tours Wellington has to offer, you will not be disappointed on this tour. You'll visit local filming locations, view a short documentary showing the filmmaking exploits of Peter Jackson and his remarkable team and be guided through the sights and sounds of the Weta Workshop in Miramar. This is followed by a fascinating 'Window into the workshop' exhibition, showing film props and weaponry, with the artists themselves describing how the artefacts were created.

---

### SUGGESTED ACTIVITY - Zealandia By Night Wildlife Sanctuary Tour

Taking a night tour of Zealandia wildlife eco-sanctuary is an unforgettable experience and one that comes highly recommended. A conservation success and safe haven for some of New Zealand's rarest native animals, Zealandia is home to many remarkable species of birds, reptiles and insects living wild within a beautiful 225 hectare (one square mile) valley, just 10 minutes from the central city.

---

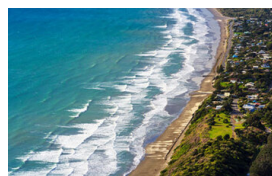
### Your accommodation: Travelodge Wellington

Travelodge Wellington is superbly positioned for you to experience everything the capital has to offer. Situated in the city centre, the hotel is just a short stroll to Lambton Quay, Wellington's premier shopping precinct and the beautiful harbour. Local attractions are a stone's throw away including Pimms Steps, Te Papa Museum, TSB Bank Arena and Westpac Stadium.



---

## Day 17



---

### Wellington to Rotorua

The drive from Wellington to Taupo takes you via the Kapiti Coast and the seaside towns of Plimmerton, Paekakariki and Paraparaumu are worth a short detour. Heading north you pass through the rural towns of Taihape, Mangaweka and Bulls before arriving onto the central plateau. A little further the military town of Waikouaiti is home to the National Army Museum, an incredible collection of New Zealand's military history and a memorial to its servicemen. Skirting Tongariro National Park, one of New Zealand's three world heritage sites, you can see the 2,500 metre peak of the volcanically active Mt. Ruapehu. You might also recognise the symmetrical shape of Mt. Ngauruhoe as this was used as the scenery of Mt. Doom in the Lord of the Rings Trilogy. The township of Taupo sits on the shores of New Zealand's largest lake, Lake Taupo - a gigantic volcanic caldera formed during one of the world's largest ever eruptions. Just north of the town are the Huka Falls and a short detour to view is advised. The Huka Jet can get you much closer with a thrilling jet boat ride. Nearby Craters of the Moon is a geothermal reserve with great walking tracks around its many boiling pools and steaming vents. Continuing on to Rotorua you pass the volcanic valley, visit either Wai O Tapu or the Waimangu Valley for a closer look. Arriving into Rotorua the city's geothermal activity is evident with steam rising from the roadside and hills. Rotorua is considered the heart of New Zealand's Maori cultural and it's here you can learn of their history and traditions. The Ohinemutu Village is located on the site of the first Maori settlement in the area. One of the most popular introductions for many to the Maori culture is through an evening at Mitai Maori Village. Here you will gain an insight into the traditional Maori way of life through song, dance and entertainment. A dinner prepared in the traditional manner is served to finish the evening off.

---

### Your accommodation: Silver Fern Suites & Spa

Silver Fern Suites & Spa is located just minutes from Rotorua's city centre and is close to popular thermal attractions, cafes, restaurants and golf courses. Suites have a private spa pool or double spa bath for you to unwind and relax.





## Day 18



### Explore Rotorua

Peppered with natural hot springs, boiling mud pools and steaming geysers, Rotorua sits within one of the world's most active volcanic regions. Geothermal landmarks aside, this city of sulphur has a rich indigenous history. Home to several prominent Māori tribes, a visit to one of the Māori experiences should be high on your agenda, learn about the special meaning of pounamu-Greenstone with Mountain Jade, explore the geysers and arts of Te Puia or immerse in an evening with Te Pā Tū. An excursion to one of the area's wellness spas is also a must! Try the Polynesian Spa for an invigorating soak in its natural mineral hot springs, Wai Ariki offers an indulging and unwinding restorative journey or pay a quick visit to Secret Spot for a soak and a delicious smash burger!

If it is a thrill you are looking for, spike your adrenaline at Rotorua Canopy Tours, soaring above the ancient native forest below. Alternatively, head up the Skyline Rotorua Gondola for soaring lake views, and ride the luge at night for an extra thrill.

Make the most of your time in Rotorua with an excursion through the Wai-O-Tapu Thermal Wonderland, one of the area's most colourful volcanic attractions. Whatever you are after, Rotorua is almost certain to have it!

---

### SUGGESTED ACTIVITY - Original Ziplining Experience with Rotorua Canopy Tours

Embark on a three-hour adventure through the native New Zealand forest. Journey through the beautiful forest canopy via an incredible network of trails, tree platforms, Ziplines and swing bridges. See breathtaking views of the woodland valleys and hills as you fly through tight openings in the trees. In between the thrill of the ziplines and suspended tree bridges, your guides will share their passion and knowledge for the forest and the conservation challenges to preserve it. It is important you read and understand the risks associated with this activity. For more information see [here](#).

---

### SUGGESTED ACTIVITY - Te Pā Tū Evening Māori Cultural Experience - Dinner Included

New Zealand's Most Awarded Cultural Attraction, presenting Te Pā Tū. Feast on song, drama, tradition, and divine seasonal kai (cuisine) within the forest Pā (village) blanketed by towering Tawa trees, blazing bonfires, and a forest-formed amphitheatre. Te Pā Tū shares Māori history, traditions, and cultural aspirations across 4-hours of celebration and feasting. These events change with each season of the Maramataka, the Māori lunar calendar.

---

### SUGGESTED ACTIVITY - Wai-O-Tapu Thermal Wonderland

Wai-O-Tapu Thermal Wonderland is a spectacular showcase of New Zealand's colourful and unique geothermal elements sculpted by thousands of years of volcanic activity. You will be introduced to a diversely different natural landscape, extending over 18-sq. km. Enjoy viewing the volcanic features as you walk at your own pace along well-defined tracks. Relax in the first-class Visitor Centre, home to the Gift Shop and Café facilities. Visit the Mud Pool, the largest in New Zealand, it was originally the site of a large mud volcano which was destroyed through erosion in the 1920s. See the history and beauty of the Lady Knox Geyser at 10:15 am every day where a daily eruption happens of up to 20 metres.

---

### Your accommodation: Silver Fern Suites & Spa

Silver Fern Suites & Spa is located just minutes from Rotorua's city centre and is close to popular thermal attractions, cafes, restaurants and golf courses. Suites have a private spa pool or double spa bath for you to unwind and relax.



---

## Day 19



### Rotorua to Auckland

The drive from Rotorua to Auckland takes you through the heart of the Waikato and its rich agricultural land. New Zealand's longest river, the Waikato guides you through the art and craft stores of Tirau and the township of Cambridge. Continue on a little further to arrive in Auckland City, your destination for the night.

## Your accommodation: Auckland City Hotel

The Auckland City Hotel is a peaceful sanctuary ideally located in the heart of Auckland's entertainment and business district. It is situated five-minute walk from the Sky Tower, Aotea Square, and the centre of town, Queen Street.



---

## Day 20



### Auckland to Paihia

The drive from Auckland to the Bay of Islands takes approximately 3.5 hours, but allow extra time to enjoy the sights along the way. Pause for a breath of fresh salty air in Whangarei, where you can explore scenic highlights like the Whangarei Falls or the lively Town Basin. Further along, take a break in Kawakawa known for its quirky, world-famous Hundertwasser Toilets. As you approach Paihia, the gateway to the Bay of Islands, soak in the stunning views of native bush and endless golden beaches that define this iconic Northland region.

---

## Your accommodation: Sea Spray Suites

Sea Spray Suites offers comfortable and relaxing accommodation close to Paihia's best activities and attractions. Directly across the road is the beautiful Te Ti Beach, exploring Paihia's beautiful waters and wildlife is only a short step away. If you are interested in experiencing New Zealand's heritage, The Waitangi Treaty House is only 1km away.



---

## Day 21



### Explore Bay of Islands

Commonly known as the 'winterless north', New Zealand's Bay of Islands is made up of over 140 subtropical atolls. Renowned for its untouched beaches, abundant marine life, and idyllic climate, this tropical paradise ticks all the boxes. Spend some time on a remote stretch of beach, or see the dolphins on an ocean safari. If diving is your thing, take the morning to descend the Rainbow Warrior - The Greenpeace flagship sunk by French saboteurs in 1985. Wander around Russell, a whaling port founded in 1843. Learn about our culture in historic Waitangi, the site where The Treaty of Waitangi was signed in 1840 between the Māori and Europeans. Alternatively, you may like to take a day tour to Cape Reinga, the very top of the North Island.

---

## SUGGESTED ACTIVITY - Hole in the Rock Cruise with Fullers GreatSights

Board your cruise and take in the stunning views as you glide out through the islands and along the Rakaumangamanga Peninsula to Cape Brett, where a historic lighthouse keeps watch over and Piercy Island/Motukōkako, or as it is popularly known as the Hole in the Rock. According to Māori legend, local warriors used to paddle through the Hole in the Rock in their canoes before departing for battle. Drops of water from the cave roof above were a good omen. If conditions permit, your skipper will expertly guide the ship through the narrow space. Keep an eye out for common and bottlenose dolphins, whales, and other marine life during your cruise, and have your camera ready as you get up close to the action. Stop off at Otehei Bay on Urupukapuka Island where you have time to relax, take a walk, have a swim, or enjoy a bite to eat and drink from the on-site fully licensed cafe. The purpose-built catamaran is licensed by DOC (the Department of Conservation) for dolphin viewing and the crew has years of experience locating dolphins in these waters.



## Your accommodation: Sea Spray Suites

Sea Spray Suites offers comfortable and relaxing accommodation close to Paihia's best activities and attractions. Directly across the road is the beautiful Te Ti Beach, exploring Paihia's beautiful waters and wildlife is only a short step away. If you are interested in experiencing New Zealand's heritage, The Waitangi Treaty House is only 1km away.



---

## Day 22



### Paihia, Bay of Islands to Auckland via Waipoua Forest

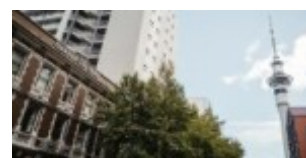
Today you will leave the Bay of Islands for a scenic return trip to Auckland. Head west, leaving the Pacific Ocean for the wilder seas of the Tasman and Hokianga. Go through the small townships of Omapere and Opononi, each with a great seaside feel.

Your route now goes south through Waipoua Forest, home to the largest and oldest Kauri trees in the country. Make sure you allow time for several of the signposted short walks as you pass - not to be missed is the five minute loop to view the largest of all the trees - Tane Mahuta. As you make your way back down the country you'll pass the Matakoho Kauri Museum with extensive displays on the region's logging, farming and social history. Continuing on, go through Warkworth and the bohemian settlement of Puhoi before crossing the harbour bridge to arrive in Auckland city.

---

## Your accommodation: Auckland City Hotel

The Auckland City Hotel is a peaceful sanctuary ideally located in the heart of Auckland's entertainment and business district. It is situated five-minute walk from the Sky Tower, Aotea Square, and the centre of town, Queen Street.



---

## Day 23



### Depart Auckland today

Explore more of vibrant Auckland city before dropping your rental car at the airport depot and continuing your onward journey.

---

## Farewell from Aotearoa-New Zealand

Bid farewell to New Zealand, taking with you unforgettable memories of its breathtaking landscapes and incredible adventures. In Maori, it is said mā te wā, which is not goodbye, it is see you soon!

---

## Tour details

Departures:	Daily
Tour type:	Nationwide Self Drive
Starts:	Christchurch
Finishes:	Auckland
Tour length:	23
Accommodation:	Motels
Car/transport type:	

---

## Included activities

Includes	Private train station transfers
Includes	Private airport transfers
Includes	TranzAlpine Train from Greymouth to Christchurch
Includes	Interislander ferry crossing
Includes	Real Journeys Milford Sound Cruise

---

## Accommodation summary

Day 1	Bella Vista Christchurch
Day 2	Punga Grove Motel & Suites
Day 3	Punga Grove Motel & Suites
Day 4	Bella Vista Queenstown
Day 5	Bella Vista Queenstown
Day 6	Lakefront Lodge
Day 7	Lakefront Lodge
Day 8	Motel on York
Day 9	Motel on York
Day 10	Mt Cook Motel
Day 11	Bella Vista Christchurch
Day 12	The White Morph, Kaikōura
Day 13	Ocean View Chalets
Day 14	Ocean View Chalets
Day 15	Travelodge Wellington
Day 16	Travelodge Wellington
Day 17	Silver Fern Suites & Spa
Day 18	Silver Fern Suites & Spa
Day 19	Auckland City Hotel
Day 20	Sea Spray Suites
Day 21	Sea Spray Suites
Day 22	Auckland City Hotel