



## Upper North Island Adventure

This 8 day tour is great option for people who wish to experience as much as they can in the upper North Island. Learn about New Zealand's history at Waitangi Treaty Grounds, cruise around the Bay of Islands, travel to Rotorua via Hobbiton village and experience New Zealand's geothermal capital before returning to Auckland via Waitomo Caves.

Starts in: Auckland  
Finishes in: Auckland  
Length: 8days / 7nights  
Accommodation: Apartments  
Can be customised: Yes

This itinerary can be customised to suit you perfectly. We can add more days, remove days, change accommodations, mix it up, add activities to suit your interests or simply design and create something from scratch. Call us today to get your custom New Zealand itinerary underway.



### Inclusions:

Includes: All coach transport

Includes: Afterhours emergency support while touring

Included activity: The Visitor Promise - Cultural Learning Course

Included activity: Waitangi Treaty Grounds Guided Tour and Cultural Performance - Return Shuttle Included

Included activity: Russell Mini Tour with Fullers Bay of Islands

Included activity: Auckland to Rotorua Small Group Tour via Hobbiton with Bush and Beach

Included activity: Mt. Tarawera & Waimangu Thermal Valley Scenic Floatplane Flight with Volcanic Air

Included activity: Private Transfer Auckland accommodation to Auckland Airport with Tourcorp

Includes: All pick ups/drop offs at destinations

Included activity: Private Transfer Auckland Airport to your Auckland Accommodation with Tourcorp

Included activity: Auckland to Paihia, Bay of Islands by InterCity Coach

Included activity: Hole in the Rock Cruise with Fullers GreatSights

Included activity: Paihia, Bay of Islands to Auckland with InterCity Coach

Included activity: Te Pā Tū Evening Māori Cultural Experience - Dinner Included

Included activity: Rotorua to Auckland via Waitomo with FlexiTours

: 1 special dinner

## Day 1



### Private Transfer Auckland Airport to your Auckland Accommodation with Tourcorp

You will be met at the Auckland airport by the driver and transferred to your Auckland accommodation.

---

### SUGGESTED ACTIVITY - Harbour Sailing Dinner Cruise with Explore

This unique on-water sailing and dining experience is not to be missed while you're in Auckland. Enjoy smooth sailing on the Waitemata Harbour - then watch this photogenic city come alive with twinkling lights. Enjoy your meal as you sail around the beautiful Auckland Harbour taking in the view as the sun slowly sets. You'll be treated to canapes and a drink as you set off towards Westhaven Marina. To finish the evening off, savour your dessert course as you leisurely sail back to Auckland's vibrant Viaduct Harbour.

---

### SUGGESTED ACTIVITY - All Blacks Experience

See what it takes to make, shape and be an All Black. Experience first-hand the excitement and emotion of game day. Discover the stories behind some of world rugby's most famous players, moments, and matches.

This guided experience introduces you to the game of rugby including state-of-the-art displays combining sound, images, interactive technology, and hands-on activities. Discover New Zealand's deep passion for our national sport, experience the full force of the All Blacks haka, and tackle interactive zones where you can try out your kicking, catching, line-out, and accuracy skills against legendary All Blacks.

---

### SUGGESTED ACTIVITY - Wētā Workshop Unleashed

A jaw-dropping, senses-shattering, awe-inspiring adventure into the heart of movie magic! Get hands-on and immerse yourself in an extraordinary world of practical effects, props and larger-than-life sets. On this award-winning tour, you can explore three movie projects imagined by the Weta crew and uncover how they bring big screen concepts to life. Discover a mind-blowing world of robots, monsters, dinosaurs and more - step right into the action to see, play and experience movie-making up close.

---

### Your accommodation: Oaks Auckland Hotel

Oaks Auckland Hotel offers a comfortable self-contained apartment in downtown Auckland. Located a short walk from Britomart Transport and the Viaduct. Enjoy your stay in central Auckland surround by delicious eateries or use your in-house kitchenette to dine in!



---

## Day 2



### Auckland to Paihia, Bay of Islands by InterCity Coach

Leave Auckland and head North to the Bay of Islands. Taking you along the coast road past the seaside villages of Orewa and Waiwera. Then it's on to the township of Puhoi, New Zealand's only Bohemian settlement, then Warkworth and the harbourside city of Whangarei and the unique township of Kawakawa. Arriving into the subtropical Bay of Islands you are greeted with bush-clad hillsides dropping to golden sand beaches. Paihia is the main centre of the bay and has a great beachside atmosphere.

---

### Waitangi Treaty Grounds Guided Tour and Cultural Performance - Return Shuttle Included

Waitangi is one of New Zealand's most historic sites where the Treaty of Waitangi was signed in 1840 between 43 Māori chiefs and the British Government. This two-day pass allows you access to the Treaty of Waitangi Grounds and includes admission to the Te Kōngahu Museum and Te Rau Aroha Museum and a Māori Cultural performance. During your guided tour, you'll learn about the history of the treaty and discover the stories and events that shaped New Zealand. The cultural performance inside the carved meeting house includes waiata (singing), poi, a display of Māori weaponry and the haka - a war dance New Zealand is well known for.



### Your accommodation: Sea Spray Suites

Sea Spray Suites offers comfortable and relaxing accommodation close to Paihia's best activities and attractions. Directly across the road is the beautiful Te Ti Beach, exploring Paihia's beautiful waters and wildlife is only a short step away. If you are interested in experiencing New Zealand's heritage, The Waitangi Treaty House is only 1km away.



---

## Day 3



### Hole in the Rock Cruise with Fullers GreatSights

Board your cruise and take in the stunning views as you glide out through the islands and along the Rakaumangamanga Peninsula to Cape Brett, where a historic lighthouse keeps watch over and Piercy Island/Motukōkako, or as it is popularly known as the Hole in the Rock. According to Māori legend, local warriors used to paddle through the Hole in the Rock in their canoes before departing for battle. Drops of water from the cave roof above were a good omen. If conditions permit, your skipper will expertly guide the ship through the narrow space. Keep an eye out for common and bottlenose dolphins, whales, and other marine life during your cruise, and have your camera ready as you get up close to the action. Stop off at Otehei Bay on Urupukapuka Island where you have time to relax, take a walk, have a swim, or enjoy a bite to eat and drink from the on-site fully licensed cafe. The purpose-built catamaran is licensed by DOC (the Department of Conservation) for dolphin viewing and the crew has years of experience locating dolphins in these waters.

---

### SUGGESTED ACTIVITY - Cape Reinga & Ninety Mile Beach Full Day Tour with Fullers Bay of Islands - Lunch Included

Journey to the very tip of the North Island and uncover a region of rich Māori tradition along the way on an unforgettable full-day tour. Travel along the sand-swept shore of Ninety Mile Beach in our purpose-built coach and experience sandboarding (weather permitting). In Māori tradition, Cape Reinga or Te Rerenga Wairua is the place where spirits depart on their long journey back to the homeland. Stand at the northernmost point of New Zealand and drink in the panoramic views. As you stand beneath the iconic lighthouse, and watch the Tasman Sea and the mighty Pacific Ocean collide far below, you'll feel the power of this special place. Throughout the day your local driver guide will provide an entertaining and thought-provoking insight into the culture, history and natural wonders of the Far North.

---

### Your accommodation: Sea Spray Suites

Sea Spray Suites offers comfortable and relaxing accommodation close to Paihia's best activities and attractions. Directly across the road is the beautiful Te Ti Beach, exploring Paihia's beautiful waters and wildlife is only a short step away. If you are interested in experiencing New Zealand's heritage, The Waitangi Treaty House is only 1km away.



---

## Day 4



### Russell Mini Tour with Fullers GreatSights

Known until the early 1840s as Kororāreka, Russell was the first town and sea port in New Zealand. The Bay of Islands offered a safe anchorage and by the 1830s Russell had become a lawless trading centre where whalers, seafarers and merchants mixed with adventurers, deserters and escaped convicts from Australia. Today the town once called the 'Hell Hole of the Pacific' is a charming and tranquil spot. This intimate one-hour coach tour visits many of Russell's iconic locations that make it so significant in New Zealand's early history. Your tour will be led by an engaging guide whose combination of historical knowledge and local insight will bring the culture and history of the area to life.

## Paihia, Bay of Islands to Auckland with InterCity Coach

Leaving the magical Bay of Islands behind you head south on State Highway 1 back towards Auckland, the "City of Sails". The route takes you through Kawakawa, affectionately known as 'train town'. The farming regions of Wellsford and Warkworth accompany you the rest of the journey before passing through the suburbs of the North Shore and crossing the harbour bridge and into the heart of Tāmaki Makaurau-Auckland City.

### Your accommodation: Oaks Auckland Hotel

Oaks Auckland Hotel offers a comfortable self-contained apartment in downtown Auckland. Located a short walk from Britomart Transport and the Viaduct. Enjoy your stay in central Auckland surrounded by delicious eateries or use your in-house kitchenette to dine in!



## Day 5



### Auckland to Rotorua Small Group Tour via Hobbiton with Bush and Beach

Departing from Auckland, this is a wonderful way to get to Rotorua and include a magical journey through Middle-Earth to the Hobbiton Movie Set from "The Lord of the Rings" and "The Hobbit" films. Travel south from Auckland over the Bombay Hills to the rich farmland of the Waikato region. Journey through the heritage town of Cambridge where tree-lined streets add to the English-style atmosphere. On arrival at Shire's Rest, you embark on your Hobbiton movie set tour where you will see 44 Hobbit holes, the Mill and double arch bridge, the party tree and visit the Green Dragon Inn. At this stunning location, you can take a photo at the door of Bilbo's house in Bag End, looking out over the whole of Hobbiton to the hills in the distance. At the end of your Hobbiton movie set tour, you will travel onwards to Rotorua.

### Te Pā Tū Evening Māori Cultural Experience - Dinner Included

New Zealand's Most Awarded Cultural Attraction, presenting Te Pā Tū. Feast on song, drama, tradition, and divine seasonal kai (cuisine) within the forest Pā (village) blanketed by towering Tawa trees, blazing bonfires, and a forest-formed amphitheatre. Te Pā Tū shares Māori history, traditions, and cultural aspirations across 4-hours of celebration and feasting. These events change with each season of the Maramataka, the Māori lunar calendar.

### Your accommodation: Quest Rotorua Central

Located in the heart of Rotorua, just a stone's throw from the restaurant and shopping precinct. Purpose built in 2012, all apartments are equipped with modern fixtures, full cooking and laundry facilities that make Quest Rotorua Central your perfect home away from home.

Meals included:           Speciality Dinner



## Day 6



### Explore Rotorua

Peppered with natural hot springs, boiling mud pools and steaming geysers, Rotorua sits within one of the world's most active volcanic regions. Geothermal landmarks aside, this city of sulphur has a rich indigenous history. Home to several prominent Māori tribes, a visit to one of the Māori experiences should be high on your agenda, learn about the special meaning of pounamu-Greenstone with Mountain Jade, explore the geysers and arts of Te Puia or immerse in an evening with Te Pā Tū. An excursion to one of the area's wellness spas is also a must! Try the Polynesian Spa for an invigorating soak in its natural mineral hot springs, Wai Ariki offers an indulging and unwinding restorative journey or pay a quick visit to Secret Spot for a soak and a delicious smash burger! If it is a thrill you are looking for, spike your adrenaline at Rotorua Canopy Tours, soaring above the ancient native forest below. Alternatively, head up the Skyline Rotorua Gondola for soaring lake views, and ride the luge at night for an extra thrill. Make the most of your time in Rotorua with an excursion through the Wai-O-Tapu Thermal Wonderland, one of the area's most colourful volcanic attractions. Whatever you are after, Rotorua is almost certain to have it!



## Mt. Tarawera & Waimangu Thermal Valley Scenic Floatplane Flight with Volcanic Air

Fly over the site of the largest eruption in New Zealand's living memory, Mount Tarawera, and gain an appreciation of how the 1886 eruption changed this stunning landscape. From Mount Tarawera to the Waimangu Volcanic Valley, view the eruption trail and surrounding Lakes district whilst enjoying informed commentary from your experienced local pilot/guide, all combined with the thrill of taking off and landing on water at the Rotorua City Lakefront.

---

### SUGGESTED ACTIVITY - Polynesian Spa Deluxe Lake Spa

Rotorua's Polynesian Spa offers a unique thermal spa experience on the shore of Lake Rotorua. Enjoy tranquil bathing and lake views in four shallow alkaline rock pools, each with different temperatures (36°C to 42°C). Surrounded by revitalising native New Zealand flora, natural rocks, the sound of two waterfalls and a grotto. The pools are filled with soothing alkaline mineral water leaving your skin soft and supple. Unwind in either the indoor or outdoor relaxation area overlooking the four hot mineral pools and Lake Rotorua, here you can further decompress on the five geothermally heated recliners set in the stunning backdrop of New Zealand's lush and natural greenery. The Lake Spa is a unique thermal pool environment, where the atmosphere changes from day to night, and from winter steam to summer sparkle.

---

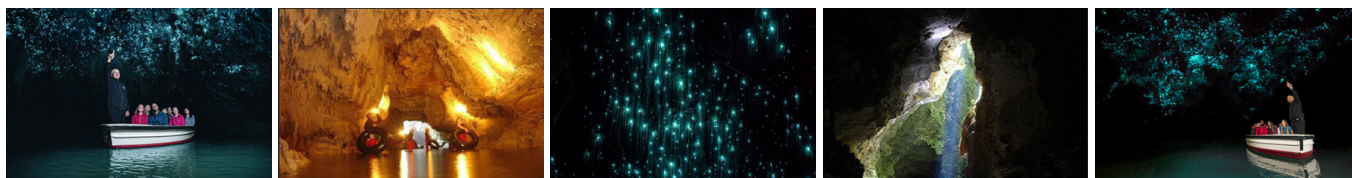
### Your accommodation: Quest Rotorua Central

Located in the heart of Rotorua, just a stone's throw from the restaurant and shopping precinct. Purpose built in 2012, all apartments are equipped with modern fixtures, full cooking and laundry facilities that make Quest Rotorua Central your perfect home away from home.



---

## Day 7



### Rotorua to Auckland via Waitomo with Flexi Tours

Journey from Rotorua to Auckland, passing through New Zealand's iconic farmland and Waikato Dairy country in a comfortable and spacious mini-coach. Enjoy Waitomo Caves, one of the country's best natural attractions where you will take a boat ride through the darkness to see a spectacular glow worm grotto. Admire thousands of magical glow worms light up the caves, a sight which has been enjoyed for over 130 years.

---

### Your accommodation: Oaks Auckland Hotel

Oaks Auckland Hotel offers a comfortable self-contained apartment in downtown Auckland. Located a short walk from Britomart Transport and the Viaduct. Enjoy your stay in central Auckland surrounded by delicious eateries or use your in-house kitchenette to dine in!



---

## Day 8



### Private Transfer Auckland accommodation to Auckland Airport with Tourcorp

You will be met at your Auckland accommodation by the driver and transferred to the airport.

---

## Tour details

Departures:	Daily
Tour type:	Independant Bus & Coach
Starts:	Auckland
Finishes:	Auckland
Tour length:	8
Accommodation:	Apartments
Car/transport type:	

---

## Accommodation summary

Day 1	Oaks Auckland Hotel
Day 2	Sea Spray Suites
Day 3	Sea Spray Suites
Day 4	Oaks Auckland Hotel
Day 5	Quest Rotorua Central
Day 6	Quest Rotorua Central
Day 7	Oaks Auckland Hotel