

Southern Alps and Milford Sound Highlights

Journey through some of the world's most breathtaking landscapes on New Zealand's South Island. Highlights include the iconic TranzAlpine Scenic Train, the untamed beauty of the West Coast, the spectacular Franz Josef Glacier, serene Lakes Wanaka and Hawea, the renowned Gibbston Valley, the adventure hub of Queenstown, and the majestic fjords of Milford Sound. This unforgettable experience offers a perfect mix of adventure, relaxation, and awe-inspiring scenery.

Starts in: Christchurch
Finishes in: Christchurch
Length: 6days / 5nights
Accommodation: Motels
Can be customised: Yes

This itinerary can be customised to suit you perfectly. We can add more days, remove days, change accommodations, mix it up, add activities to suit your interests or simply design and create something from scratch. Call us today to get your custom New Zealand itinerary underway.



Inclusions:

Includes: All coach transport
Includes: All pick ups/drop offs at destinations
Includes: Afterhours emergency support while touring
Included activity: The Visitor Promise - Cultural Learning Course
Included activity: Electronic Travel Guide and In-Country Support App
Included activity: TranzAlpine Scenic Train: Christchurch to Greymouth
Included activity: Greymouth Train Station to Franz Josef with Hokitika Scenic Tours
Included activity: Franz Josef to Queenstown via WānakaSmall Group Tour with Cheeky Kiwi
Included activity: Milford Sound Cruise and Coach Tour from Queenstown with RealNZ - Lunch Included
Included activity: Queenstown to Christchurch via Mt Cook & Lake Tekapo with Cheeky Kiwi
1 lunch

Day 1



Welcome to Ōtautahi / Christchurch

Kia ora and welcome to Aotearoa, New Zealand. After checking into your accommodation, the rest of the day is yours to explore at your leisure. Christchurch, known in Māori as Ōtautahi, is the largest city on the South Island. Often referred to as the Garden City it boasts one of the largest public parks in the country and the city centre is full of very impressive stone buildings reminiscent of the English university towns. The inner city has almost been completely rebuilt following earthquakes in 2010 and 2011. Explore the city and see how the old mixes with New Zealand's "newest" city.

TranzAlpine Scenic Train: Christchurch to Greymouth

The early morning departure is rewarded with incredible scenery today onboard the TranzAlpine Scenic Train. Considered one of the world's great train journeys, it travels between the East Coast, Christchurch and the West Coast, Greymouth. From your carriage, you'll see the fields of the Canterbury Plains and farmland, followed by the spectacular gorges and river valleys of the Waimakariri River. The train then climbs into the Southern Alps passing through small settlements and Arthur's Pass National Park before descending through the lush beech rain forest to the West Coast town of Greymouth, a great base for visits to Punakaiki and the West Coast glaciers.

Greymouth Train Station to Franz Josef with Hokitika Scenic Tours

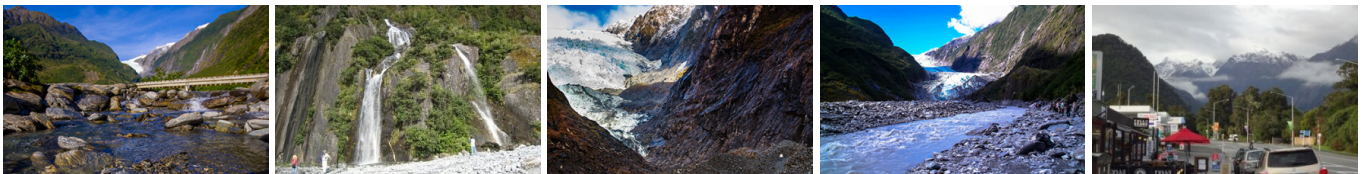
Depart Greymouth, and head south through Hokitika and towards Glacier Country. Pass through Ross, a historic gold mining town where several old buildings remain intact. Travelling further down the coast drive through Hari Hari, the town where Guy Menzies, the first person to fly solo over the Tasman crash-landed. Follow the coast through several small towns including Whataroa, the only home to the Kōtuku-White Heron which is showcased on the New Zealand \$2 coin. From there it is a short drive and on a clear day you may even catch a glimpse of the Franz Josef glacier as you arrive in the town centre.

Your accommodation: Punga Grove Motel & Suites

Punga Grove is right in the heart of Franz Josef Glacier village stylish accommodation in a beautiful rainforest setting.



Day 2



Explore Franz Josef

Franz Josef is a small yet lively town in the heart of New Zealand's West Coast, best known for its spectacular 12 km-long glacier. The township is surrounded by lush, rainforest-clad mountains and has a vibrant atmosphere with plenty to explore. A variety of scenic walking trails offer incredible views of the glacier, but for a truly up-close experience, a licensed helicopter tour is the only way to set foot on the ice. Beyond the glacier, unwind in the rejuvenating Hot Pools or visit the West Coast Wildlife Centre to spot rare kiwi birds. If you're in the mood for a more relaxed day, the township is home to charming souvenir and gift shops, as well as great dining spots like SnakeBite Brewery and King Tiger. Whether you're chasing adventure or relaxation, Franz Josef is a stunning blend of wild beauty and welcoming hospitality.

SUGGESTED ACTIVITY - Cruise & Nature Walk with Franz Josef Wilderness Tours

Take a cruise on Lake Mapourika, the largest lake in Westland Tai Poutini National Park. Journey across the Lake and enjoy exclusive access to the private rainforest trail through the kiwi sanctuary. Step off the boat & into another world of Jurassic rainforest and meet curious native bird life. The nature walk follows a track thoughtfully carved by your skipper Dale and his team, ensuring minimal impact on the area. Experience the pristine beauty of old-growth rainforest, untouched and preserved in its natural state. This haven is home to abundant birdlife, including the graceful kōtuku-white heron and New Zealand's native bush birds. It is important you read and understand the risks associated with this activity. For more information please see [here](#).

SUGGESTED ACTIVITY - Twin Glacier Scenic Helicopter Flight with The Helicopter Line

A spectacular scenic flight soaring over two of New Zealand's most famous glaciers, Fox and Franz Josef. Landing at the head of one and view the incredible sight of this frozen river as it winds its way through ancient carved valleys. It is important to read and understand the risks associated with this activity. A full risk disclosure can be found [here](#).

Your accommodation: Punga Grove Motel & Suites

Punga Grove is right in the heart of Franz Josef Glacier village stylish accommodation in a beautiful rainforest setting.



Day 3



Franz Josef to Queenstown via Wanaka Small Group Tour with Cheeky Kiwi

Begin your adventure in Franz Josef and journey south to Queenstown on a fully guided tour. Capture stunning reflections of Aoraki-Mt Cook at Lake Matheson, enjoy the dramatic contrast of rainforest and ocean at Bruce Bay, and feel the Tasman Sea's waves at Ship Creek. Marvel at the 28-meter Thunder Creek Falls and see the picturesque Lake Hāwea and Lake Wānaka. Pass through the Crown Range to arrive in Tāhuna-Queenstown.

Your accommodation: Blue Peaks Lodge

Blue Peaks Lodge offers well equipped self contained rooms with a fantastic location overlooking Queenstown and is just an easy five minutes walk to the Queenstown lakefront.



Day 4



Explore Queenstown

Well-known as New Zealand's 'adventure capital', Queenstown is home to a range of adventures, from the world's first and most famous bungy jumps to jet boat thrills, white-water rafting, and skydiving. However, Queenstown offers far more than a fast-paced, action-packed holiday. Settled on the shores of beautiful Lake Wakatipu beneath a soaring panorama of the Remarkables Mountain Range, this alpine town is surrounded by many historic, gastronomic, and scenic wonders. Take a stroll through the beautiful lakefront parks and gardens, browse through market stalls on weekends, dine in wonderful al-fresco restaurants, or ride on the 100-year-old historic Steamship - TSS Earnslaw to Walter Peak Station. Take the Queenstown Gondola up to Bob's Peak and soak up the panoramic views of the magnificent lake and mountain ranges. And after all of that, if you do want the adrenaline rush, Queenstown is known for taking your pick from the Shotover Jet, Canyon Swing, Zipline, Luge, or Heli-hike.

SUGGESTED ACTIVITY - TSS Earnslaw Cruise and Walter Peak Gourmet BBQ Lunch

Enjoy a quintessential Kiwi experience a delicious barbeque lunch and a farm tour in a stunning lakeside setting. First, take a scenic cruise from Queenstown to Walter Peak High Country Farm on board the vintage steamship TSS Earnslaw, one of the last remaining fully functional coal-fired passenger ships in the southern hemisphere.

Disembark and take in the picturesque shores of the Station. Relax on the lakeside terrace at the Colonel's Homestead Restaurant and savour the aromas of the best local produce being cooked on the grill. The seasonal menu has plenty to choose from salads, vegetables and succulent meat with plenty of delicious dietaries on offer as well. Finish your meal with a scrumptious dessert before joining an entertaining farm demonstration or exploring the beautiful lakeside gardens.

SUGGESTED ACTIVITY - Wilderness Jet Experience with Dart River Safaris

Journey deep into the heart of the world-renowned Mt Aspiring National Park, where myth, heritage, and fantasy come to life. As one of Queenstown's most exhilarating activities, the Wilderness Jet adventures on a spectacular journey deep into the heart of the world-renowned Mount Aspiring National Park. It is important you read and understand the risks associated with this activity. For more information please see [here](#).

SUGGESTED ACTIVITY - Gondola and Buffet Dinner with Skyline Queenstown

With breathtaking views across Queenstown and Lake Wakatipu, the Skyline Complex is a must-do. Catch the fully enclosed gondola to the summit for a remarkable panorama of the city's surroundings. Wander the outdoor viewing decks then enjoy a gourmet buffet meal in the Stratosphere Restaurant.

SUGGESTED ACTIVITY - Appellation Classic Wine Tour

Get a real taste for Central Otago wines with an interactive afternoon tour through Queenstown's neighbouring wine region, Gibbston, otherwise known as the 'Valley of Vines'. Learn about this pioneering wine region and its evolution from just a couple of rows of vines into a world-renowned Pinot Noir producer. Enjoy tastings at three unique cellar doors including a guided tour and wine tasting inside New Zealand's largest wine cave and sample a delightful cheeseboard to accompany one of the wine tastings.

Your accommodation: Blue Peaks Lodge

Blue Peaks Lodge offers well equipped self contained rooms with a fantastic location overlooking Queenstown and is just an easy five minutes walk to the Queenstown lakefront.



Day 5



Milford Sound Cruise and Coach Tour from Queenstown with RealNZ - Lunch Included

Departing from Queenstown sit back and relax aboard a luxury glass-roofed coach to enjoy a relaxing trip along the shores of Lake Wakatipu and through the rolling countryside to Te Anau. The coach driver provides an informative commentary and plenty of photo opportunities. After a morning tea break in Te Anau, the coach continues along the spectacular Milford Road. On reaching Piopiotahi-Milford Sound, board your vessel for a leisurely cruise in the fiord. The cruise provides excellent viewing opportunities and plenty of time is available to enjoy waterfalls, rainforests, mountains and wildlife. Rain or shine, every day in Piopiotahi-Milford Sound will leave you in awe. It is important you read and understand the risks associated with this activity. For more information, see [here](#).

Your accommodation: Blue Peaks Lodge

Blue Peaks Lodge offers well equipped self contained rooms with a fantastic location overlooking Queenstown and is just an easy five minutes walk to the Queenstown lakefront.

Meals included: Lunch



Day 6



Queenstown to Christchurch via Mt Cook & Lake Tekapo with Cheeky Kiwi

This small group, fully-guided day trip combines all of the key highlights in the area with magnificent views of the famous Lake Tekapo, Aoraki/Mount Cook National Park and Tasman Glacier. The ultimate way to get from Queenstown to Christchurch. Led by famously passionate tour guides, notorious for bringing your journey to life by sharing their stories and rich background knowledge, in modern, comfortable minibuses packed with extras ensuring your comfort and safety.

Tour details

Departures:	Daily
Tour type:	Independant Bus & Coach
Starts:	Christchurch
Finishes:	Christchurch
Tour length:	6
Accommodation:	Motels
Car/transport type:	

Accommodation summary

Day 1	Punga Grove Motel & Suites
Day 2	Punga Grove Motel & Suites
Day 3	Blue Peaks Lodge
Day 4	Blue Peaks Lodge
Day 5	Blue Peaks Lodge