

Auckland to Queenstown Southbound Explorer

Starting in Auckland with time to truly explore the region's natural features this tour then travels through the heart of the North Island by scenic train. The South Island beckons with a host of natural and scenic locations and inclusions. From Abel Tasman National Park's beaches to Kaikoura's whales to the West Coast's unique Glaciers and geology, the diversity is outstanding. In the deep-south you'll discover the wildlife of the Otago Peninsula and spend a night in the remote Doubtful Sound before returning to Queenstown.

Starts in: Auckland
 Finishes in: Queenstown
 Length: 20days / 19nights
 Accommodation: Boutique Lodges & Hotels
 Can be customised: Yes

This itinerary can be customised to suit you perfectly. We can add more days, remove days, change accommodations, mix it up, add activities to suit your interests or simply design and create something from scratch. Call us today to get your custom New Zealand itinerary underway.



Inclusions:

Includes: Late model rental cars

Includes: Unlimited kms

Includes: Airport & ferry terminal rental car fees

Includes: Comprehensive tour pack (detailed itinerary, driving instructions, map/guidebooks, brochures)

Included activity: Electronic Travel Guide and In-Country Support App

Included activity: TranzAlpine Scenic Train: Christchurch to Greymouth

Included activity: Twin Glacier Scenic Helicopter Flight with The Helicopter Line

Included activity: TSS Earnslaw Cruise and Walter Peak Gourmet BBQ Dining

Included activity: Dinner at Camp Estate, Larnach Castle

Included activity: Dinner at Camp Estate, Larnach Castle

Included activity: The Northern Explorer Scenic Train: Auckland to Wellington

plus much more...

Includes: Fully inclusive rental car insurance (excess may apply)

Includes: GPS navigation

Includes: Additional drivers

Includes: 24/7 support while touring New Zealand

Included activity: Private Transfer Auckland Airport to Auckland accommodation with Tourcorp

Included activity: Private transfer accommodation to Christchurch Train Station with Christchurch Touring

Included activity: Arrowtown Wanaka Highlights Tour

Included activity: Doubtful Sound Fiordland Navigator Overnight Cruise

Included activity: Castle to Cruise Tour and Penguin Place

Included activity: Full Day Taste of Auckland Tour + Lunch with Bush and Beach

Included activity: Private transfer Wellington train station to hotel (IST)

Day 1



Private Transfer Auckland Airport to Auckland Accommodation

You will be met at the Auckland airport by the driver and transferred to your Auckland accommodation.

Welcome to Auckland

Auckland, New Zealand's self-proclaimed "City of Sails" is the country's largest metro area. Resting between the Pacific Ocean and the Tasman Sea, this urban paradise has something for everyone. Surrounded by native bush, rainforests, and an abundance of beaches, Auckland is a playground for both the city savvy and those with an eye for adventure. Explore the central museums and galleries on foot, or get out onto the water to experience the best views of the city.

Your accommodation: Fable Auckland

Located right on Queen Street the Fable Auckland is boutique and stylish property with an ideal location to enjoy and explore the vibrant heart of the 'City of Sails'.



Day 2



Explore Auckland City

Perched on the edge of a large natural harbour, New Zealand's 'City of Sails' offers the best of both worlds. Sandy beaches, native bush and lush rainforests give way to a vibrant urban culture, humming with life. Spend time in the Viaduct Harbour, try your hand at sailing an America's Cup yacht or take the ferry to nearby Waiheke Island for a gourmet food and wine experience. Walk (if you're that way inclined) to the top of Auckland's highest volcano, Mt Eden, and take in soaring views of the gulf. Pack a picnic lunch and lose yourself in one of the 800 regional national parks on offer or grab a book and relax on a deserted beach. Head up the Sky Tower, standing at just over 300m tall (about 1,000 feet) and have a meal in the 360 degree revolving restaurant. Scale the outermost perimeter of the Harbour Bridge or test your stomach and bungy off both. To end your day, catch a cab to Ponsonby Road and sample some upmarket culinary delights.

SUGGESTED ACTIVITY - America's Cup Sailing Experience with Explore

Participate as crew on an authentic America's Cup yacht. Take the helm, exert energy on the grinders or sit back and enjoy the action and scenery as you sail the beautiful Waitemata Harbour. Experience the excitement of sailing, no experience necessary. Feel the thrill of the wind in your face as you tack and jibe. These powerful and highly engineered race vessels are usually the domain of billionaires and elite professional yachties but this unique two-hour sailing experience offers everyone the opportunity to sail these Grand Prix racing machines. America's Cup is the world's oldest and most prestigious sporting trophy and ultimate yachting regatta. Experience it first hand sailing these remarkable vessels on the harbour that hosted the America's Cup in 2000 and 2003.

SUGGESTED ACTIVITY - Waiheke Island Explorer Hop On Hop Off Tour

The most flexible tour on Waiheke Island, introducing you to the island's top spots! Start the tour of at Auckland harbor cruising on the ferry to reach Waiheke Island where you can hop on and off as much as you like at any of the 16 convenient stops which include vineyards, beaches and restaurants. If you prefer, stay on board and enjoy a 1 1/2 hour scenic tour of the island. The buses stop at some of the island's iconic spots including Oneroa Village, Onetangi Beach, Batch Winery, the new Tantalus winery/brewery, Mudbrick Vineyard, Cable Bay Vineyard and more. Knowledgeable tour drivers, and the addition of an on-board host, ensure you'll receive the most informative commentary as you travel around and you can get all the local tips and tricks for how best to enjoy Waiheke. The Explorer Hop on Hop off departs from each hop on hop-off location approximately every 60 minutes throughout the day. At the end of the tour hop on the ferry and cruise the sparkling waters back to the Auckland harbor.

SUGGESTED ACTIVITY - Wētā Workshop Unleashed

Explore worlds of horror, sci-fi and fantasy in the making. An exciting, realistic, and authentic experience, with three fully developed and original film concepts: A nail-biting horror Fauna, a fantasy epic Age of the Ever-Clan, and the mind-bending sci-fi Origins.

A 90-minute guided experience through fully themed environments, including immersive horror, fantasy, and sci-fi story worlds. Be immersed by a specially-created unique sweeping cinematic soundtrack, animatronic creatures, physical and digital interactives, hyper-realistic sculpted giants and characters, a horror house experience, and much more.

SUGGESTED ACTIVITY - All Blacks Experience

See what it takes to make, shape and be an All Black. Experience first-hand the excitement and emotion of game day. Discover the stories behind some of world rugby's most famous players, moments and matches.

This guided experience introduces you to the game of rugby before being lead through state-of-the-art displays combining sound, images, interactive technology and hands-on activities. Discover New Zealand's deep passion for our national sport, experience the full force of the All Blacks haka, tackle interactive zones where you can try out your kicking, catching, line-out and accuracy skills against legendary All Blacks.

Your accommodation: Fable Auckland

Located right on Queen Street the Fable Auckland is boutique and stylish property with an ideal location to enjoy and explore the vibrant heart of the 'City of Sails'.

Meals included: Breakfast



Day 3



Full Day Taste of Auckland Tour + Lunch with Bush and Beach

Start your day in central Auckland, passing through The Domain and the heritage suburb of Ponsonby before heading over the Harbour Bridge to the North Shore. You'll stroll on Narrow Neck Beach in historic Devonport before summiting Mt Victoria, Auckland's highest volcano.

Conclude the morning part of your tour with a visit to the fish market and yachting precinct - the Viaduct Harbour.

Leave behind the bustle of the city and head northwest to taste the flavours of Auckland's Heritage Wine Region, Kumeu. Enjoy lunch at a contemporary vineyard restaurant, sample world-renowned wines, and marvel at the rugged surf-fringed coastline nearby. Your journey will also take you to Muriwai beach one of the few mainland sites in the world where you can observe gannets. One of the largest seabirds in the world, you will get to observe the gannets flying in their natural environment set against the beautiful Tasman sea.

Your accommodation: Fable Auckland

Located right on Queen Street the Fable Auckland is boutique and stylish property with an ideal location to enjoy and explore the vibrant heart of the 'City of Sails'.

Meals included: Breakfast, Lunch



Day 4



Private Transfer Auckland accommodation to Auckland Train Station

The Northern Explorer Scenic Train: Auckland to Wellington

The Northern Explorer is a journey through the heart of the North Island, travelling between Auckland, New Zealand's largest city, to Wellington, New Zealand's arts and culture capital. Along the way you pass the Central North Island ski towns of National Park and Ohakune. You also see fantastic views of New Zealand farmland, the volcanic plateau, Mount Ruapehu, the world famous Raurimu Spiral, and stunning river gorges - all from panoramic windows or open air viewing decks. All carriages feature large panoramic windows giving sweeping views of the magnificent North Island. The Observation Carriage includes a mix of seating including lounge-style seating. The lounge-style seating is arranged at the very rear of this glass-backed carriage enabling you to enjoy a totally unique Northern Explorer experience.

Private transfer Wellington train station to hotel

You will be met on arrival into Wellington train station and transferred to your hotel.

Your accommodation: Bolton Hotel Wellington

The Bolton Hotel offers contemporary apartment-style accommodation in the heart of Wellington. Just steps from the Parliament buildings and central business district, Bolton Hotel is conveniently close to the best of the city's shops, cafes and restaurants and is within walking distance of Wellington's vibrant waterfront.

Meals included: Breakfast



Day 5



Wellington City

Wellington home to New Zealand's centre of government has a largely cosmopolitan feel. Often referred to as 'mini Melbourne', this (self-described) windy city is a melting pot of art, culture, food, and fashion. Quirky laneway bars, underground art shows, and hipster eateries make up its inner-city vibe, while a host of sandy beaches outside the urban bustle bring a cheerful holiday feel.

Head to Te Papa Museum for a history lesson and a ticket to one of its many international exhibitions or jump aboard the Wellington Cable Car at Lambton Quay - the only running funicular railway in the country. For those with an eye for boutique, fashion wander through Cuba St to sample some of the city's best vintage stores. Break for coffee at a hipster cafe and be sure to snap a pic outside the 'Beehive', New Zealand's parliamentary debate chamber.

Go behind the scenes at Weta Workshop Experience, the Oscar Award Winning design studio behind Lord Of The Rings, The Hobbit, and Avatar. If you're a foodie at heart, a two-hour round trip to Martinborough is a must-do. Take your time as you wind through spectacular wine country, and be sure to stop in at Martinborough Wines or Ata Rangi Martinborough. For an educational day out, learn about New Zealand's native species at Zealandia, the world's first fully-fenced eco-sanctuary and home to over 40 types of endangered and native birds.

SUGGESTED ACTIVITY - Lord Of The Rings Half Day Tour - Wellington

With some of the best Lord of the Rings tours Wellington has to offer, you will not be disappointed on this tour. You'll visit local filming locations, view a short documentary showing the filmmaking exploits of Peter Jackson and his remarkable team and be guided through the sights and sounds of the Weta Workshop in Miramar. This is followed by a fascinating 'Window into the workshop' exhibition, showing film props and weaponry, with the artists themselves describing how the artefacts were created.

SUGGESTED ACTIVITY - Wētā Workshop Experience

The Weta Cave mini-museum brings you face to face with some of the characters, props and displays from your favourite movies, including The Hobbit and Lord of the Rings movies. Visit Weta Cave Workshop and get up close to the props, weapons and costumes created for The Lord of the Rings, Power Rangers, The Great Wall, Avatar, District 9, and more. See artists at work on the tour stage and peek through windows that look directly into the Workshop. Hear stories from the Weta Workshop crew. Many have worked on the films themselves!

Weta Workshop is also known for its extraordinary miniatures and bigatures created for films like The Lord of the Rings, Furious 7, The Legend of Zorro, and Master and Commander and discover Weta Workshop's latest jaw-dropping creations.

Your accommodation: Bolton Hotel Wellington

The Bolton Hotel offers contemporary apartment-style accommodation in the heart of Wellington. Just steps from the Parliament buildings and central business district, Bolton Hotel is conveniently close to the best of the city's shops, cafes and restaurants and is within walking distance of Wellington's vibrant waterfront.

Meals included: Breakfast



Day 6



Private transfer to Interislander ferry terminal

You will be collected from your hotel and transferred to the Interislander ferry terminal in time for your ferry check in.

Interislander Ferry Wellington to Picton

The 92 km journey between Wellington and Picton takes around 3 hours and has been described as 'one of the most beautiful ferry rides in the world'. Leaving Wellington Harbour you pass many interesting points such as Pencarrow Head on top of which is New Zealand's oldest lighthouse (1859). Red Rocks is home to a seal colony and Oterangi Bay is the site which recorded the country's highest ever wind speed of 268 kph (167 mph).

From the Cook Strait spectacular views of the Kaikoura Ranges on the South Island can be enjoyed and dolphins and many sea birds are often seen. Around one hour of the cruise takes you through the Marlborough Sounds and this region of bush covered mountains, small islands, crystal clear waters and secluded bays offer remarkable photographic opportunities. The final leg of your cruise travels through Queen Charlotte Sound before coming to an end in the picturesque town of Picton.

Collect your rental car

This tour can be priced with any of the rental cars available in our fantastic range, from economy hatchbacks to prestige saloons and SUV's.

Picton to Abel Tasman National Park

From Picton you'll first travel the Marlborough sounds coastline between Picton and Havelock. This drive offers spectacular views of the sounds, so be sure to allow plenty of time for stops and sightseeing. Take moment to explore the secluded sandy coves along the narrow road to Portage. Aim to arrive in Havelock for lunch, as this portside town has a great variety of cafes and restaurants to eat at. Stop at the famous Pelorus bridge, just outside of Havelock. From here there are a number of forest walks to stretch your legs on with the most popular being a 30 minute loop through beech, rimu and totara forest. Continue on over the Bryant Range to arrive into Tasman Bay and the city of Nelson. Motueka is a further 45 minutes along the coast and from there it's just a short drive to Kaiteriteri and Marahau, all ideal spots from which to explore the beautiful Abel Tasman National Park.

Your accommodation: Kimi Ora Eco Resort

Kimi Ora Eco Resort offers panoramic views of Kaiteriteri beach and estuary and is close to the Abel Tasman National Park. Surrounded by beautiful native bush, these chalets offer peace and seclusion.

Meals included: Breakfast



Day 7



Abel Tasman National Park

Abel Tasman National Park, known for its coastal hiking track has an abundance of golden beaches, inlets and private lagoons. The park has a mild climate and is a special place to visit at any time of the year. Why not enjoy a scenic cruise through the Sounds or take a kayaking tour around its many sheltered bays? Relax to the melodious birdsong and get up close to some of the parks many animal residents, including native bats, geckos, birds and marine mammals fur seals and dolphins.

SUGGESTED ACTIVITY - Abel Tasman National Park Cruise and Walk Open Day Pass

Abel Tasman Cruises combined with short bush walks are a great way to experience this beautiful national park. Join Abel Tasman Wilson's Experiences' boat at Kaiteriteri for your Abel Tasman National Park Cruise. The boat hugs the shore, travelling in close to the idyllic beaches. Your skipper provides a full commentary of the trip. Take your own lunch or pre-order a prepared lunch the night before. The following are some of the more popular cruise and walk options you can choose from.

Vista Scenic Cruise

Cruise from Kaiteriteri, through the Astrolabe Roadstead to Torrent Bay and Bark Bay, calling into picturesque beaches and coves where walkers and kayakers are transferred to golden-sand beaches. Pause to view the antics at Tonga Island Seal Colony in the Marine Reserve, then continue past isolated northern beaches to the long sweep of burnished sands at Totaranui.

Pitt Head Loop

Cruise through the sheltered waters of the Astrolabe Roadstead to disembark at Anchorage Beach. There you can choose to take a leisurely stroll to Te Pukatea Bay or walk the Pitt Head Track. Alternatively relax on the beach and go swimming in the calm azure waters. Walking time is around 1 hour.

Seals and Beach

For the best of everything, this trip is for you. Take a scenic cruise into Tonga Island Marine Reserve, pausing to watch the antics at its resident Fur Seal Colony. Land at historic Tonga Quarry beach then take a walk for about 2 hrs 15 mins (4.1 kms, 2.5 miles) over a forested saddle and around spectacular Bark Bay estuary with its cascading waterfalls.

Bark Bay Falls

From the sheltered beach at Kaiteriteri, cruise past the sculpted granite headlands and islands. Pause to view the long, golden, forest-fringed beaches of Torrent Bay. Disembark at Medlands Beach. A short stroll takes you to popular, sheltered Bark Bay with its pleasantly shaded camping area. Swim in calm azure waters, sunbathe or relax in the shade of native forest trees. A forested track around the estuary takes you to Bark Bay Falls (approx. 1 hour return).

Swing Bridge, Bush and Beach

Cruise into the heart of the National Park with full commentary to introduce you to this fascinating coastline. Disembark at idyllic Medlands Beach, where you will walk to the long golden-sand beach of Anchorage, via Torrent Bay (approx. 4hrs) The track weaves through sunny groves of Manuka and fern between breathtaking views of the granite coast and lush gullies of mature forest, to reach tranquil forest pools. Cross the rushing Falls River by an impressive swing bridge. Allow extra time to take a short side track beside a crystal forest stream to visit tranquil Cleopatra's Pool.

SUGGESTED ACTIVITY - Beaches, Bays and Seals Guided Sea Kayaking Trip Including Picnic Lunch

Combining the best of the Abel Tasman, this trip showcases incredible beaches, coastal walks and native wildlife. First you'll meet your guide and join the 9.30 am Vista Cruise along the magnificent coastline to Torrent Bay. You'll then arrive at Torrent Bay Lodge and complete a full training session and safety briefing before moving on to the water in kayaks to discover beautiful beaches, tidal estuaries and rivers.

Stop for a picnic lunch in a sheltered cove and take some time to swim, explore or sunbathe on the sand. On your return trip, if the winds are favourable, sails will be hoisted and you'll sail back via Pinnacle Island to view the seal colony there - if you're lucky, you may even see some resident blue penguins at the same time. Arriving back at Torrent Bay Lodge, freshen up with a hot shower and re-join the vista cruise back to Kaiteriteri, arriving at 4.10 pm.

During the summer there is the option to enjoy an unguided two hour coastal bush walk after the kayaking trip. Walk around the picturesque Torrent Bay Lagoon via Cleopatra's Pool to the anchorage where you will re-join the boat back to Kaiteriteri.

SUGGESTED ACTIVITY - Beaches, Bays and Seals Guided Sea Kayaking Trip Including Picnic Lunch

Combining the best of the Abel Tasman, this trip showcases incredible beaches, coastal walks and native wildlife. First you'll meet your guide and join the 9.30 am Vista Cruise along the magnificent coastline to Torrent Bay. You'll then arrive at Torrent Bay Lodge and complete a full training session and safety briefing before moving on to the water in kayaks to discover beautiful beaches, tidal estuaries and rivers.

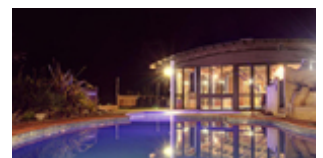
Stop for a picnic lunch in a sheltered cove and take some time to swim, explore or sunbathe on the sand. On your return trip, if the winds are favourable, sails will be hoisted and you'll sail back via Pinnacle Island to view the seal colony there - if you're lucky, you may even see some resident blue penguins at the same time. Arriving back at Torrent Bay Lodge, freshen up with a hot shower and re-join the vista cruise back to Kaiteriteri, arriving at 4.10 pm.

During the summer there is the option to enjoy an unguided two hour coastal bush walk after the kayaking trip. Walk around the picturesque Torrent Bay Lagoon via Cleopatra's Pool to the anchorage where you will re-join the boat back to Kaiteriteri.

Your accommodation: Kimi Ora Eco Resort

Kimi Ora Eco Resort offers panoramic views of Kaiteriteri beach and estuary and is close to the Abel Tasman National Park. Surrounded by beautiful native bush, these chalets offer peace and seclusion.

Meals included: Breakfast



Day 8



Abel Tasman National Park to Kaikoura

Today you will take the scenic route, down towards the spectacular landscapes of Nelson Lakes National Park. After taking in the sights there, you will back up and pass through Marlborough and Blenheim, New Zealand's largest wine growing regions - and home to many award winning wines. We recommend timing your day to arrive for lunch with a view to sampling some of the local offerings at one of the 40 plus wineries surrounding the area. Continue over the dry hills of the Marlborough Ranges to one of the most spectacular coastlines in the world, Kaikoura. For over 50 kilometers (30 miles) follow the shoreline. Keep an eye out for an abundance of seals, seabirds and other native wildlife. Kaikoura is also one of the only places in the world where whales can be seen all year round. To the east you'll see the Pacific Ocean while the West brings views of the towering Kaikoura ranges. Arriving in the Kaikoura township, you'll find it bustling with cafes and restaurants.

Your accommodation: Bendamere House B&B

Bendamere House B&B has quality ensuite rooms, detached from the main house adding to the privacy and comfort, with superb views overlooking the Pacific Ocean and Seaward Kaikoura mountain range.

Meals included: Breakfast



Day 9



Kaikoura to Christchurch

Today you travel down the coast before heading inland through the North Canterbury wine region - the Waipara Valley. As you drive through this area you'll be greeted by one of New Zealand's most notorious animals, the sheep. If you've time on your hands we recommend taking a detour to Hanmer Springs for relaxing dip in its thermal pools. Arriving into Christchurch you'll see a new and improved city, steadily rising from the ruins of the 2011 earthquake.

SUGGESTED ACTIVITY - Ocean's Cabin with Whale Watch Kaikoura

Experience New Zealand's only marine based whale watching company. Whale Watch Kaikoura offer a once-in-a-lifetime, up close encounter with the giant Sperm Whale. You are also likely to encounter New Zealand fur seals, dusky dolphins and albatross. Depending on the season you may also see pilot, blue and southern right whales as well as migrating humpbacks. Often orcas can be spotted here and the world's smallest dolphin, the Hector's, occasionally make an appearance.

Cruise in style on modern catamarans, specifically designed for whale watching, featuring large passenger cabins and outside viewing decks. Passenger numbers for each tour are kept below the vessel carrying capacity to ensure your tour experience remains a personal one.

Your accommodation: The Muse Christchurch

The Muse is a place where culture, business, and art come together. The hotel boasts a fusion of designer chic surroundings, expressive local art and luxurious comforts to provide each guest with a unique and exceptional experience during their stay. This is the ideal hotel for any purpose of visit and will pleasantly surprise even the most seasoned guest in Christchurch.

Meals included: Breakfast



Day 10



Private transfer accommodation to Christchurch Train Station with Christchurch Touring

A private driver will collect you from your accommodation and transfer you to the Christchurch train station in time for your train journey.

TranzAlpine Scenic Train Christchurch to Greymouth

Your early morning departure is rewarded with incredible scenery today onboard the TranzAlpine Scenic Train, considered one of the world's great train journeys. It travels between Christchurch and Greymouth, from one coast of New Zealand to the other. From your carriage you'll see the fields of the Canterbury Plains and farmland, followed by the spectacular gorges and river valleys of the Waimakariri River. Your train then climbs into the Southern Alps before descending through the lush beech rain forest to the West Coast town of Greymouth, a great base for visits to Punakaiki and the West Coast glaciers.

Collect your rental car

This tour can be priced with any of the rental cars available in our fantastic range, from economy hatchbacks to prestige saloons and SUV's.

Pancake Rocks

The Pancake Rocks are a very popular tourist destination at Dolomite Point south of the main village. The Pancake Rocks are a heavily eroded limestone area where the sea bursts through several vertical blowholes during high tides. Together with the 'pancake'-layering of the limestone (created by immense pressure on alternating hard and soft layers of marine creatures and plant sediments), these form the main attraction of the area.

The Pancake Rocks are presently explorable by several walkways winding through the rock formations, some are pathways, and others are carved into stairways up and down the rock faces. State Highway 6, the only through road on the West Coast, passes through the town.

SUGGESTED ACTIVITY - TranzAlpine Scenic Plus Addon - KiwiRail

Feel like luxurious service, exclusive meals, inclusive drinks and priority check in and boarding? The Scenic Plus add-on option is for you. Enjoy personal service with panoramic windows, spacious carriages and comfortable seating. The exclusive open-air viewing carriage is available if you feel like capturing the ultimate photo or simply wish to experience the great outdoors whilst travelling through the Southern Alps. Your food is prepared exclusively in a kitchen carriage, with paired drinks and a paddock to plate regionally inspired food menu all your senses will be fully engaged on this journey.

Your accommodation: Scenic Hotel Punakaiki

Scenic Hotel Punakaiki is a modern, award-winning hotel complex, architecturally designed to harmonious with the local environment. Nestled in the foothills of Paparoa National Park the resort has spectacular views of the Wild West Coast beaches while all rooms have rainforest and/or ocean views.

Meals included: Breakfast



Day 11



Punakaiki to Franz Josef Glacier

The drive South on State Highway 6 takes you through many West Coast towns. The first is Greymouth, the commercial centre for the West Coast. Just south of the town is Shantytown a replica gold rush town with lots of great displays from yesteryear.

The next town is Hokitika and this is a great place to explore the craft and gift stores. The Jade or Greenstone on offer in Hokitika is probably some of the best you will see in the country. The Hokitika Gorge, off the beaten track and inland a little is a spectacular detour. Turquoise waters flowing through a narrow gorge. A great short walk will deliver you to this piece of paradise.

Ross is the site of an old gold mining town and some of the old buildings and workings remain. In fact Ross is still home to one of the few working gold mines left in New Zealand and the local information centre offers you the chance to pan for gold.

Continuing south Hari Hari is the township that Guy Menzies decided to land in (or rather crash land) as he became the first person to fly solo across the Tasman.

Whataroa, a small township on the main road is where you would head off to see one of the worlds rarest birds. The entire population (somewhere between 150 and 200 birds) of the New Zealand white heron or kotuku nest at the Waitangi Roto Nature Reserve and guided tours from October to March will take you there.

Arriving in to the Glacier region you catch your first glimpse of Franz Josef Glacier from a few kilometres out as it flows from the Southern Alps. Franz Josef township is a lively place with a great atmosphere, plenty of choice to dine out and some wonderful activities to enjoy.

Your accommodation: Westwood Lodge

Westwood is a purpose built lodge, crafted entirely from wood and exquisitely decorated throughout. The lounge is the place to meet to watch the Southern Alps turn a soft pink in the setting sun.

Meals included: Breakfast



Day 12



Explore Franz Josef

Franz Josef is a small but lively town in the heart of the West Coast, known for its 12 km long glacier. Surrounded by lush rainforest-clad mountains the township has a vibrant and bustling atmosphere. To see the ice from a viewpoint you can walk along the valley floor to the viewpoint below the terminal face. However, to go on the glacier itself you must take a licensed helicopter tour.

Twin Glacier Scenic Helicopter Flight with The Helicopter Line

Take a spectacular scenic flight over two of New Zealand's most famous glaciers. Land at the head of one and view the incredible sight of this frozen river as it winds its way through ancient carved valleys. Should weather not be suitable to take this flight you are able to transfer your booking onto a similar tour on any of the Helicopter Line's operations in Queenstown or Mt Cook.

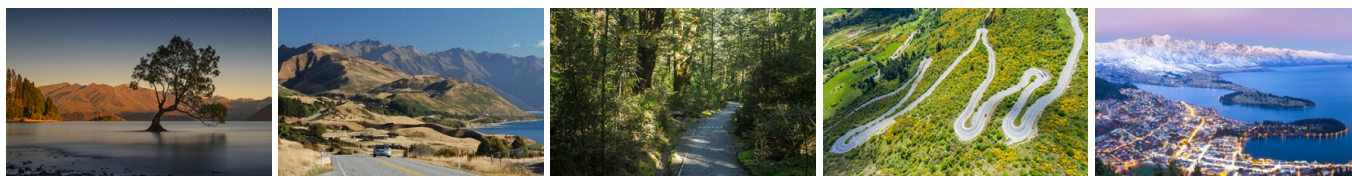
Your accommodation: Westwood Lodge

Westwood is a purpose built lodge, crafted entirely from wood and exquisitely decorated throughout. The lounge is the place to meet to watch the Southern Alps turn a soft pink in the setting sun.

Meals included: Breakfast



Day 13



Franz Josef to Queenstown (via Wanaka)

Heading south you pass through the second glacier town of Fox Glacier before heading along the coast and more classic West Coast bush scenery. Be sure you stop at the Paringa Salmon Farm for lunch or a refreshment make sure you feed the fish, it's very impressive. At Knights Point Lookout elephant seals can often be seen basking on the sandy beaches at the far end of the point.

Crossing the massive Haast River you turn inland and head into the valley climbing through mountains littered with waterfalls.

The Haast Valley offers a spectacular view of the river and its enormous power. The Blue Pools near Makarora are a great 30-minute walk. Lakes Wanaka and Hawea guide you into the township of Wanaka before you head over New Zealand's highest sealed road, Crown Range Road before dropping into Queenstown. This drive should be planned as a whole day to really enjoy the scenery and to allow time to explore the walks, and many stops en route.

Your accommodation: The Dairy Private Hotel by Naomi

The Dairy Private Hotel – a unique blend of exquisite design, rich history and warm hospitality in the city centre. Beginning as Queenstown's original 'dairy' (corner store) in 1920, it has now transformed into an interiors masterpiece after an exquisite refurbishment that features wallpapers from British luxury interiors brand House of Hackney.

Meals included: Breakfast



Day 14



Explore Queenstown

Well-known as New Zealand's 'adventure capital', Queenstown is home to a range of adventures, from the world's first and most famous bungee jumps to jet boat thrills, white-water rafting, and skydiving. However, Queenstown offers far more than a fast-paced, action-packed holiday. Settled on the shores of beautiful Lake Wakatipu beneath a soaring panorama of the Remarkables Mountain Range, this alpine town is surrounded by a plethora of historic, gastronomic, and scenic wonders. Take a stroll through the beautiful lakefront parks and gardens, browse through market stalls on weekends, dine in wonderful al-fresco restaurants, or ride on the 100-year-old historic Steamship - TSS Earnslaw to Walter Peak Station. Take the Queenstown Gondola up to Bob's Peak and soak up the panoramic views of the magnificent lake and mountain ranges. And after all of that, if you do want the adrenaline rush, Queenstown is known for taking your pick from the Shotover Jet, Canyon Swing, Zipline, Luge, or Heli-ski.

SUGGESTED ACTIVITY - Shotover Canyon River Jet Boat Adventure

Riding the iconic 'Big Red' Jet Boat through the narrow Shotover Canyon is an exhilarating experience not to be missed. Your skilled jet boat driver pushes the boat to 85 kph, skimming across shallow water and past towering canyon walls. This 25 minute white water ride includes 360 degree spins and maximum thrills.

SUGGESTED ACTIVITY - Appellation Boutique Wine Tour

Experience a tasting journey through three of Central Otago's incredibly scenic and varying wine sub-regions; Gibbston, Bannockburn and Cromwell. Visit three boutique vineyards, tasting their unique cool climate wines and discover why the Central Otago region has become world-renowned in its own right.

Indulge at a fourth vineyard restaurant for a platter-style lunch, savouring the finest and freshest produce, accompanied with a wine flight. There will also be an opportunity to retrace history when you stroll through the charming historical settlement of Old Cromwell.

Your accommodation: The Dairy Private Hotel by Naomi

The Dairy Private Hotel – a unique blend of exquisite design, rich history and warm hospitality in the city centre. Beginning as Queenstown's original 'dairy' (corner store) in 1920, it has now transformed into an interiors masterpiece after an exquisite refurbishment that features wallpapers from British luxury interiors brand House of Hackney.

Meals included: Breakfast



Day 15









Arrowtown Wanaka Highlights Tour

Visit historic Arrowtown, stunning Wanaka and the world-famous Cardrona hotel with a knowledgeable guide. Visit Arrowtown and the Chinese Village, Wanaka township, the Wanaka tree, views over stunning Lake Wanaka, the bra fence, Cardrona Hotel, top of the Crown Range & Crown Terrace lookout.

Includes an afternoon beverage at the Cardrona Hotel.

TSS Earnslaw cruise to Walter Peak including gourmet BBQ dinner and a farm tour

Enjoy a quintessential Kiwi experience, a delicious gourmet BBQ buffet meal and a farm demonstration in a stunning lakeside setting. Take in the stunning views of Lake Wakatipu and its surroundings as you cruise across the lake to the historic Walter Peak high country farm aboard the TSS Earnslaw Steamship.

Enjoy the ambience of the heart of the stately homestead while your Colonel's Homestead Restaurant chef prepares a gourmet BBQ dinner. Your seasonal menu includes an extensive selection of local New Zealand produce, including succulent meats and a selection of delicious vegetables and salads. Complete your meal with your choice of delicious desserts, New Zealand cheeses, tea and coffee.

After dinner, watch the farm dogs in action with a sheep-herding demonstration and say hello to the other farm animals. Finally, cruise home under the southern stars and enjoy the fresh night air as the lights of Queenstown draw ever closer.

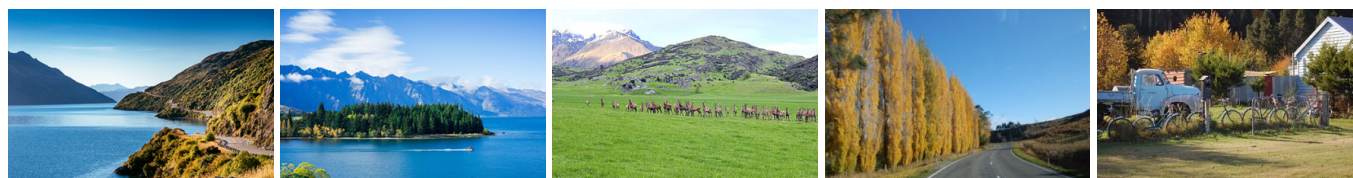
Your accommodation: The Dairy Private Hotel by Naumi

The Dairy Private Hotel – a unique blend of exquisite design, rich history and warm hospitality in the city centre. Beginning as Queenstown's original 'dairy' (corner store) in 1920, it has now transformed into an interiors masterpiece after an exquisite refurbishment that features wallpapers from British luxury interiors brand House of Hackney.

Meals included: Breakfast



Day 16



Queenstown to Manapouri

The spectacular Lake Wakatipu guides you south towards Te Anau and Fiordland. The rolling farmland of Southland accompanies you as you pass through Garston, Athol and Five Rivers before turning west towards Mossburn and Manapouri.

Doubtful Sound Fiordland Navigator Overnight Cruise

Take in the tranquillity of remote Doubtful Sound on this unique overnight wilderness cruise. Beginning in Manapouri with a short boat ride across the lake, you'll be taken by coach over the Wilmot Pass to Deep Cove, Doubtful Sound. Board the Fiordland Navigator, a purpose-built vessel designed like a traditional coastal trading scow. Be accommodated in a private cabin with an ensuite bathroom or a quad-share bunk room with shared bathroom facilities. The Navigator has a large spacious deck for viewing the scenery and wildlife as well as a dining saloon, bar and observation lounge. As you take in the stunning scenery of the Fiord, you'll be provided with a running commentary of the area and its history, points of interest and wildlife. You'll have the opportunity to see dolphins, fur seals and, if you're lucky rare Fiordland penguins. After anchoring in a sheltered cove, choose to explore the shoreline by kayak or stabi-craft, or if you're really brave take a dip in the water. In the evening enjoy a three-course buffet dinner prepared on board and served in the dining saloon. Enjoy beer and fine wines from the licensed bar, and spend time star gazing on the upper deck. Following hearty cooked breakfast the next morning you will spend your remaining time exploring other parts of the fiord before returning to Deep Cove for the trip back to Manapouri.

Your accommodation: Fiordland Navigator Overnight Boat in Doubtful Sound

The Fiordland Navigator is purpose built for cruising in the fiords. The vessel offers spacious viewing decks, a comfortable dining saloon and observation lounge.

Meals included: Breakfast, Lunch, Dinner



Day 17



Manapouri to Dunedin

The drive from Manapouri to Dunedin takes you through classic Southland farmland scenery but if you want to spend the whole day exploring a little off the beaten path then taking the Southern Scenic Route through The Catlins is highly recommended.

Dinner at Camp Estate, Larnach Castle

Keeping with the historical setting of Larnach Castle, a four-course dinner is offered in a grand Castle Dining Room. This is a trust-the-chef experience where you may indulge in incredible meals and meet other guests. The menu reflects local meats and vegetables, served in a traditional New Zealand-style cuisine with the opportunity to pair with regional wines.

Your accommodation: Camp Estate at Larnach Castle

A luxurious country house built from blue stone and features a spectacular marble staircase. The modern rooms are all double glazed and the reception rooms are all heated by open fires and underfloor heating. Staying at Camp Estate includes entry to Larnach Castle and the grounds.

Meals included: Breakfast, Speciality Dinner



Day 18



Explore Dunedin and the Otago Peninsula

Known as the Edinburgh of the South, Dunedin City has a heavy Scottish influence. Surrounded by rugged coastal plains and windswept beaches it's home to an eclectic mix of historical and modern architecture as well as industrial technology. Renowned for its Flemish Baroque-inspired 'gingerbread house' Railway Station, this university town is bustling with life. Head to the Saturday farmers market held in the aforementioned railway grounds for a taste of organic produce, handmade crepes and local honey. Explore the many cafes and wine bars in The Octagon, then continue on a self-guided walking tour of the internationally acclaimed Street Art dotted around the city. Drive to the coast and watch the freighters passing in the distance while you sunbathe, or hire a mountain bike and test your legs on one of the many trails available in the area. For a more immersive historical experience, follow the coast to New Zealand's only castle, Larnach Castle. On your way back be sure to head to the Otago Peninsula to see the largest mainland Albatross colony in the world.

Castle to Cruise Tour and Penguin Place

Today you'll explore the wildlife and history of the Otago Peninsula. You'll be welcomed to the MV Monarch for a wildlife cruise around Taiaroa Head, home to the world's only mainland nesting site for royal albatross. Scattered along the rocks you'll also see New Zealand fur seals basking in the sun and possibly New Zealand sea lions on the beach. In the water you may also see penguins, dolphins and other marine birds. Back on land you'll take a guided tour of New Zealand's only castle, Larnach Castle built in 1871. Learn of the scandals and history of the castle and explore the beautiful garden of international significance. Your final stop of the day is to The Otago Peninsula Eco Restoration Alliance (formally Penguin Place), a natural nesting site for the rarest penguin in the world, the Yellow Eyed Penguin.

Dinner at Camp Estate, Larnach Castle

Keeping with the historical setting of Larnach Castle, a four-course dinner is offered in a grand Castle Dining Room. This is a trust-the-chef experience where you may indulge in incredible meals and meet other guests. The menu reflects local meats and vegetables, served in a traditional New Zealand-style cuisine with the opportunity to pair with regional wines.

A luxurious country house built from blue stone and features a spectacular marble staircase. The modern rooms are all double glazed and the reception rooms are all heated by open fires and underfloor heating. Staying at Camp Estate includes entry to Larnach Castle and the grounds.

This drive takes you through the heart of the historical Otago Goldfields. The townships of Lawrence, Roxburgh and Alexandra, once booming mining towns in the late 1800's gold rush now sleepy sun-traps bearing little resemblance to their bustling past. However, some buildings do remain as do the original shafts and workings. In more recent times Alexandra has become the 'stone fruit capital' of New Zealand, with the ideal climate for the trees. It is also a great place to buy some of the local produce. The road follows the South Island's longest river, the Clutha River, and at Clyde, you will see one of the largest hydro power stations harnessing its energy before passing through Gibbston to arrive at your destination today, Queenstown.

The Dairy Private Hotel – a unique blend of exquisite design, rich history and warm hospitality in the city centre. Beginning as Queenstown's original 'dairy' (corner store) in 1920, it has now transformed into an interiors masterpiece after an exquisite refurbishment that features wallpapers from British luxury interiors brand House of Hackney.

Depart Queenstown today

Drop your rental car at the Queenstown airport today.

Tour details

Departures:	Daily
Tour type:	Nationwide Self Drive
Starts:	Auckland
Finishes:	Queenstown
Tour length:	20
Accommodation:	Boutique Lodges & Hotels
Car/transport type:	

Included activities

Includes	All breakfasts
Includes	Private train station transfers
Includes	Private airport transfers
Includes	TranzAlpine Train from Christchurch to Greymouth
Includes	Northern Explorer Scenic Train from Auckland to Wellington
Includes	Interislander ferry crossing
Includes	Taste of Auckland full day tour
Includes	Otago Peninsula Wildlife Premier tour including Larnach Castle
Includes	Safari of the Scenes Wakatipu Basin tour, Queenstown
Includes	TSS Earnslaw cruise and dinner at Walter Peak high country farm, Queenstown
Includes	Doubtful Sound Overnight Cruise
Includes	Twin Glaciers Scenic Helicopter Flight, Franz Josef

Accommodation summary

Day 1	Fable Auckland
Day 2	Fable Auckland
Day 3	Fable Auckland
Day 4	Bolton Hotel Wellington
Day 5	Bolton Hotel Wellington
Day 6	Kimi Ora Eco Resort
Day 7	Kimi Ora Eco Resort
Day 8	Bendamere House B&B
Day 9	The Muse Christchurch
Day 10	Scenic Hotel Punakaiki
Day 11	Westwood Lodge
Day 12	Westwood Lodge
Day 13	The Dairy Private Hotel by Naumi
Day 14	The Dairy Private Hotel by Naumi
Day 15	The Dairy Private Hotel by Naumi
Day 16	Fiordland Navigator Overnight Boat in Doubtful Sound
Day 17	Camp Estate at Larnach Castle
Day 18	Camp Estate at Larnach Castle
Day 19	The Dairy Private Hotel by Naumi