



Great Journeys of New Zealand - Signature Flavours of Aotearoa New Zealand Tour

Embark on a mouthwatering rail journey through New Zealand's vibrant culinary landscape. Savor the region's finest wines as you roll through sun-dappled vineyards, indulge in exquisite gourmet dining, and dive deep into the island's rich cultural heritage. From the subtle flavors of local dishes to the bold tastes of handcrafted wines, each stop offers a feast for the senses. Join like-minded travelers to explore the heart and soul of New Zealand, celebrating its food, wine, and culture at every delicious turn.

Starts in: Auckland
Finishes in: Queenstown
Length: 18days / 17nights
Accommodation: Hotel 4 star
Can be customised: Yes

This itinerary can be customised to suit you perfectly. We can add more days, remove days, change accommodations, mix it up, add activities to suit your interests or simply design and create something from scratch. Call us today to get your custom New Zealand itinerary underway.



Inclusions:

Includes: All coach transport
Includes: Afterhours emergency support while touring
Included: Marlborough Wine Tour
Included: Coastal Pacific Train
Included: TranzAlpine Scenic Plus

Included: Ōkārito Heritage Tour

Included: Haast River Safari
Included: Fullers 360 Wine & Dine Waiheke Tour
Included: Zealong Estate Tour, Tea Ceremony & Signature High Tea
Included: Hamilton Museum
Included: Lauren's Lavender Farm

Included: Introducing Te Papa Museum Tour
Included: Beachcomber Cruises Mailboat

Includes: All pick ups/drop offs at destinations
Included: Paua Pearl Farm Tour

Included: Dolphin Encounter Experience
Included: Walking Gourmet Food Tour
Included: Pounamu (Greenstone) Experience & Hokitika Gorge Walk

Included: Scenic journey through the Southern Lakes

Included: Ayrburn Arrowtown
Included: Sanctuary Mountain

Included: Hamilton Gardens Guided Tour

Included: Northern Explorer Scenic Train
Included: Northern Explorer Train Tongariro National Park to Wellington

Included: Cruise on the Interislander Ferry
: 17 breakfasts, 11 lunches, 9 dinners

Day 1



Explore Auckland

Kia ora! Welcome to Auckland, New Zealand's City of Sails! Auckland is known for its multicultural hub of food, music, arts, and culture. After checking into your hotel and reading your welcome letter from your Tour Director, head out and explore all that Auckland has to offer. This is the perfect opportunity to visit the Sky Tower or go shopping along bustling Queen Street. You may even fancy a drink in one of the charming bars or eateries of Vulcan Lane. Your tour officially begins this evening, as you join your fellow travellers and Tour Director this evening for a welcome reception.

Your accommodation: 4-4.5 Star Hotel

Meals included: Dinner

Day 2



Explore Auckland and Waiheke Island

Indulge in a leisurely breakfast at your hotel. Today, embark on a journey with the Waiheke Island Wine & Dine experience. Gather in the lobby your hotel, where your guide awaits to escort you on a stroll to the ferry terminal. Board the 09:00 ferry, setting sail for Waiheke Island on a 40-minute voyage. Upon arrival, join your guide for an insightful bus tour around the island, absorbing the scenery and local commentary. Pause for a moment of culinary delight at Stonyridge, where lunch awaits, accompanied by a glass of wine. Delve into the island's charm as your guide explains the freedom to explore aboard the Waiheke hop-on-hop-off bus at your leisure. As the day unfolds, continue your island exploration independently or join your guide for a ferry ride back to Auckland city at a designated time. Whether you choose to extend your island adventure or return with the group, today promises an unforgettable escapade filled with culinary delights and scenic wonders.

Your accommodation: 4-4.5 Star Hotel

Meals included: Breakfast, Lunch

Day 3



Explore Waikato

Wake up to breakfast at your hotel, setting the perfect tone for a day of exploration and discovery. In the morning you'll board your luxury coach as we whisk you away to the captivating Sanctuary Mountain. Along the journey, we'll make a brief stop for a quick morning tea or coffee break, ensuring you're energized for the adventures ahead. Immerse yourself in the wonders of Sanctuary Mountain Maungatautari on a bespoke two-hour tour through its ancient forests. Discover the indigenous flora and fauna, their traditional uses, and gain fascinating insights into Māori herbal medicinal practices, the unique Rongoā Rākau. This unforgettable journey will take you deep into the heart of New Zealand's natural beauty and cultural heritage. After our sanctuary adventure, we return to Hamilton city where you'll check in to your hotel. With the afternoon free to explore, Hamilton beckons with its myriad of attractions and experiences, promising a relaxing and enriching continuation of your journey.

Your accommodation: 4-4.5 Star Hotel

Meals included: Breakfast

Day 4



Explore Hamilton

Indulge in a delicious breakfast spread at your hotel to start the day. Today our journey begins as we depart from Hamilton in style aboard our exclusive coach, as we travel to the enchanting Zealong Tea Estate, where an immersive 1.5-hour tour and tea ceremony await, followed by the renowned Signature High Tea experience. Discover the art of tea-making amidst breathtaking surroundings. At midday, we bid farewell to Zealong and head to the Hamilton Gardens for a captivating 75-minute Highlights tour, commencing at 13:00. Immerse yourself in the beauty and history of these renowned gardens. (Please note: No packed lunch included). Our journey continues into the afternoon as we board our coach for a visit to the Hamilton Museum, where you'll have the opportunity to explore its treasures at your leisure. After an enriching day of exploration, the afternoon is yours to enjoy at your leisure. Let your curiosity guide you as you uncover the wonders of Hamilton at your own pace.

Your accommodation: 4-4.5 Star Hotel

Meals included: Breakfast

Day 5



Hamilton to Tongariro National Park on the Northern Explorer Train

Rise with an indulgent breakfast at your hotel before our adventure begins as we depart for Hamilton Frankton Station. Embark on a journey like no other as we board the Northern Explorer train from Hamilton Station. Prepare for a feast for the senses with our Scenic Plus dining experience, offering unparalleled views and culinary delights. Our train adventure leads us to Ohakune Station, where the next leg of our journey awaits. Embark on a scenic drive along the breathtaking Ohakune Mountain Road. After a day of exploration, we return to your accommodation in Ohakune for the next two nights' stay. As evening falls, indulge in culinary delight with a two-course dinner included for the entire group, promising a perfect end to an unforgettable day of adventure and discovery.

Your accommodation: 4-4.5 Star Hotel

Meals included: Breakfast, Lunch, Dinner

Day 6



Tongariro National Park & Taumarunui

Enjoy the morning with breakfast at your accommodation, then set off on a journey of discovery to Taumarunui. Delight your senses with a visit to the Forgotten World Gardens. Enjoy the ambiance as you spend a few hours in Taumarunui, exploring a local garden before your lunchtime feast at Laurens Lavender Farm. Indulge in a hot meat dish accompanied by an array of refreshing salads, followed by a walk amidst the fragrant lavender fields and a visit to the lavender shop. After your garden escapades, you'll return to Ohakune, where the evening is yours to spend how you like. Opt for relaxation in the inviting hot tubs or immerse yourself in the vibrant energy of Ohakune at your leisure.

Your accommodation: 4-4.5 Star Hotel

Meals included: Breakfast, Lunch

Day 7



Ohakune to Wellington on the Northern Explorer Train

After breakfast, we begin our day by travelling from National Park to Mt Ruapehu. You won't want to leave this mini excursion to Middle Earth without a panoramic photo in hand! Joining the Northern Explorer train once again, you will wave goodbye to this UNESCO World Heritage Site as you settle into your uber-comfortable seat. Don't get too comfortable though; dramatic rivers, gorges, and ravines are just around the bend! Stretch your legs and explore the open-air carriage to acquire the best views from the train. As you glide through rich green farmland and past a dramatic coastline, indulge in afternoon tea while drinking in the views. All too soon the train will arrive into Wellington leaving the picturesque Porirua Harbour behind you.

Arriving at Wellington Railway Station, you are just a stone's throw from downtown, the Beehive, and Parliament Buildings. Welcome to New Zealand's capital city! You won't want to waste a moment of time after checking into the hotel - your evening is free to explore this award-winning cultural and culinary capital from Queen's Wharf to Cuba Street and beyond.

Your accommodation: 4-4.5 Star Hotel

Meals included: Breakfast, Lunch, Dinner

Day 8



Explore Wellington

Start your day with breakfast at your accommodation and relax before starting a tour at Te Papa museum. Step outside and immerse yourself in the vibrant atmosphere as you cross the road to enter Te Papa, New Zealand's national museum. Embark on a captivating journey with a 90-minute Māori Experience Kīnaki Tour at Te Papa, led by a knowledgeable Māori guide. Explore the rich cultural heritage of Aotearoa New Zealand as you discover the unique tools, foods, and medicines of the iwi taketake (first peoples of the land). Conclude your tour with a traditional food tasting experience, and engaging conversations with your hosts. The afternoon is yours to explore the charms of Wellington at your leisure, with optional activities awaiting your discovery. Gather in the lobby of your hotel to welcome new guests joining the tour, fostering connections and shared experiences. Indulge in an included dinner at a renowned Wellington restaurant, savoring culinary delights that reflect the vibrant flavors of New Zealand, promising a perfect end to an enriching day of exploration and cultural immersion.

Your accommodation: 4-4.5 Star Hotel

Meals included: Breakfast, Dinner

Day 9



Cook Strait Ferry Crossing to Marlborough

As the sun begins to rise, gather in the lobby bright and early, ready to embark on a day of adventure. Our luxurious transfers will transport you to the Interislander ferry terminal, setting the stage for a scenic journey ahead. Board the Interislander ferry, where the Premium Lounge awaits, offering breakfast and a complimentary bar service, ensuring a journey of indulgence and relaxation. At midday, the Interislander docks in the picturesque town of Picton, marking the beginning of the next leg of your adventure in the South Island. Embark on an unforgettable experience as you set sail on the Mailboat Cruise with Beachcomber Cruises, immersing yourself in the stunning scenery of the Marlborough Sounds. Indulge in a delightful packed lunch onboard as you soak in the beauty of the surroundings before arriving at Portage Resort. As the day draws to a close, indulge in a culinary delight with a sumptuous three-course dinner included at Portage Resort, promising a perfect end to a day filled with unforgettable experiences and breathtaking vistas.

Your accommodation: 4-4.5 Star Hotel

Meals included: Breakfast, Lunch, Dinner

Day 10



Explore Marlborough Sounds

Awake to breakfast awaiting you at Portage Resort, with a view into the Kenepuru Sound setting the perfect tone for a day of culinary and scenic delights. Let the adventure begin as Beachcomber Cruises arrives to whisk you away from Portage Resort. Immerse yourself in the captivating world of the Paua Pearl Farm Tour, a journey filled with morning tea and Paua tastings. On arrival back in Picton, embark on an unforgettable afternoon with Sounds Connection. Indulge in a gourmet experience as you journey through the renowned Marlborough region, savoring a three-course lunch menu at Allan Scott Wines Bistro, accompanied by a glass of wine with your main meal. After lunch, the adventure continues with visits to two more wineries for included tastings, and a stop at the Makana Boutique Chocolate Factory, promising a sweet conclusion to your day. After checking in to your hotel, take the evening to savor the memories created, with no dinner included, allowing you the freedom to explore the delights of Picton at your leisure.

Your accommodation: 4-4.5 Star Hotel

Meals included: Breakfast, Lunch

Day 11



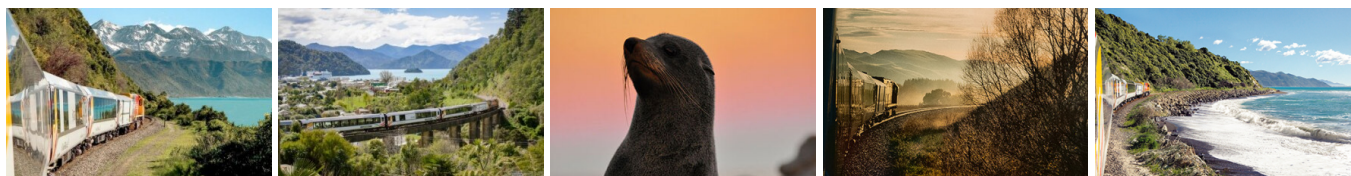
Marlborough to Kaikoura on the Coastal Pacific Train

Indulge in a free morning in Picton, allowing you to explore the charms of this coastal gem at your leisure, from strolls to seaside views. Enjoy breakfast at your hotel. Embark on a journey aboard the Coastal Pacific, where every moment is elevated in the Scenic Plus class. Delight in a light lunch complemented by beverages, followed by afternoon tea amidst breathtaking vistas. It's late afternoon and train arrives in Kaikōura, where transfers await to take you to your hotel. Prepare for an evening of culinary delights as you indulge in an included dinner at a renowned Kaikōura restaurant, enjoying the flavors of the region. Retreat to the comfort of your hotel in Kaikōura.

Your accommodation: 4-4.5 Star Hotel

Meals included: Breakfast, Lunch, Dinner

Day 12



Kaikoura to Christchurch on the Coastal Pacific Train

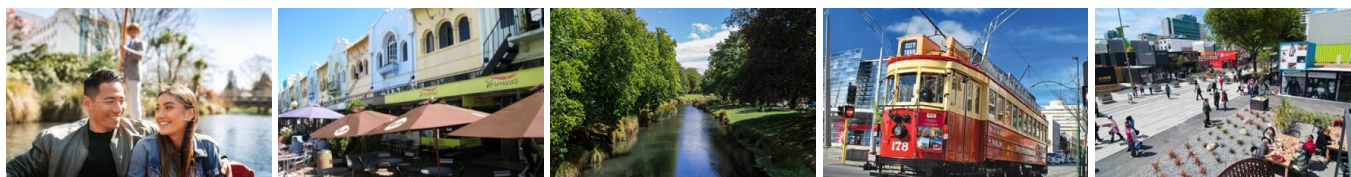
Set out on an unforgettable Dolphin Encounter in Kaikōura, where the ocean comes alive with the playful energy of wild dusky dolphins. Cruise along the stunning coastline as knowledgeable guides share insights into these intelligent marine mammals. Watch as pods leap, spin, and interact in their natural habitat - or elevate your adventure with the option to upgrade and swim alongside them for a truly immersive and exhilarating experience. After this outstanding experience, we're sure you will be feeling peckish. Head to the beach to sample some iconic New Zealand food - you can't go wrong with the humble Kiwiana fish and chips. Work off the deep-fried delights by wandering through the wonderful array of local artisan stores and souvenir shops.

Gather again for the next leg of your journey. Late afternoon, board the Coastal Pacific for the Scenic Plus experience, treating yourself to unparalleled vistas as you glide along the coastline. Revel in dinner and drinks, included with your Scenic Plus package, as you unwind and soak in the breathtaking scenery.

Your accommodation: 4-4.5 Star Hotel

Meals included: Breakfast, Dinner

Day 13



Explore Christchurch

Enjoy a leisurely breakfast at your accommodation in Christchurch. Fuel up for the adventures ahead as you prepare to delve into the vibrant culture of this charming city. Join a cultural food walking tour of Christchurch, a journey blending history, storytelling, and tantalizing local tastings. Immerse yourself in the rich tapestry of flavors and traditions as you explore the city streets, guided by knowledgeable locals sharing their tales. With the afternoon at your leisure, explore Christchurch at your own pace. Delve into the city's past at Quake City Museum or Ravenscar Museum, or opt for leisurely pursuits like punting along the Avon River or riding the iconic trams. For those seeking a bird's-eye view, ascend the Gondola for panoramic vistas of the Canterbury Plains and Southern Alps. For dinner, gather for a culinary delight at a renowned Christchurch restaurant with your tour group.

Your accommodation: 4-4.5 Star Hotel

Meals included: Breakfast, Dinner

Day 14



The TranzAlpine Scenic Train

Embark on a breathtaking journey through New Zealand's South Island. Prepare to be enchanted as you board the TranzAlpine train in the morning, enjoying the Scenic Plus package that treats you to a sumptuous breakfast and lunch against the backdrop of unparalleled vistas. Your adventure continues as the TranzAlpine pulls into Greymouth. Here, your transport awaits to whisk you away to Hokitika, where a truly authentic experience awaits. Join Rachel from Hokitika Scenic Tours and a local Iwi member for an immersive pounamu (jade) experience, followed by a guided walk around the mesmerizing Hokitika Gorge loop track, led by Rachel and the Iwi. Mid-afternoon, bid farewell to Hokitika as coaches depart for Franz Josef, where your accommodation awaits. After checking in, indulge in a delicious dinner included at the hotel, rounding off a day filled with awe-inspiring landscapes, cultural immersion, and unforgettable experiences.

Your accommodation: 4-4.5 Star Hotel

Meals included: Breakfast, Lunch, Dinner

Day 15



Franz Josef & Ōkārito Experience

Embark on a day of wonder and exploration of the south, beginning with breakfast included at your hotel. As the morning unfolds, seize the opportunity to elevate your experience with an optional helicopter tour, treating yourself to breathtaking aerial views of Franz Josef and its surrounding landscapes. Set off on a scenic coach journey from Franz Josef to the picturesque village of Ōkārito. Upon arrival, immerse yourself in the natural wonders of Ōkārito with the Ōkārito Heritage EcoTour. This enriching experience combines a captivating walking tour with a tranquil lagoon boat tour, offering insights into the area's rich history and biodiversity. Indulge in a delicious lunch featuring local delicacies, included as part of your tour. With approximately two hours of free time, marvel at the beauty of Ōkārito before returning to Franz Josef, where the afternoon beckons with a myriad of optional activities. Whether you choose to relax and unwind or embark on further adventures, the choice is yours to make the most of your time in this stunning region.

Your accommodation: 4-4.5 Star Hotel

Meals included: Breakfast, Lunch

Day 16



Explore the Southern Lakes

Today you will explore the Haast Pass. With changing landscapes around every bend, this journey of about five hours to Queenstown, will be one of the most scenic drives you may ever take. While aboard an exciting river boat and private coach, marvel at the beaches, crystal blue lakes and rivers, mountain peaks, lush vineyards, charming plains and majestic glaciers as your Tour Director guides you between local hidden gems. Stop in unique locations that only locals know about. After an exciting plunge into the history of this gold rush village, you will arrive in the world-famous resort town of Queenstown!

Your accommodation: 4-4.5 Star Hotel

Meals included: Breakfast, Lunch

Day 17



Explore Queenstown & Arrowtown

Indulge in a leisurely morning as your day begins with a continental breakfast included at the Naumi Hotel, featuring a tempting spread of croissants, cold meats, and cereals, ensuring you start your day on a delicious note. With the morning at your leisure, explore Queenstown at your own pace, immersing yourself in the array of optional activities this vibrant lakeside town has to offer. Around noon, embark on a delightful journey with Ayrburn Arrowtown, as their coaches collect you from Naumi The Dairy Hotel. Prepare for a treat as you're transported to Ayrburn for a wine tasting experience paired with a buffet lunch. Following this culinary adventure, take some time to wander around the charming Arrowtown township, soaking in its quaint charm, before returning to Queenstown aboard the coach. This serves as a farewell function, marking the end of your tour with memorable flavors and experiences. As the day winds down, retreat to the lounge at Naumi The Dairy Hotel for happy hour. Enjoy complimentary drinks and canapés, raising a toast to the adventures of the tour and the memories made.

Your accommodation: 4-4.5 Star Hotel

Meals included: Breakfast, Lunch

Day 18



Depart Queenstown

Your journey will end after enjoying a final breakfast with your fellow travellers. You will be transferred to Queenstown Airport for your departing flight.

Tour details

| | |
|---------------------|----------------------------|
| Departures: | Daily |
| Tour type: | Guided Coach & Train Tours |
| Starts: | Auckland |
| Finishes: | Queenstown |
| Tour length: | 18 |
| Accommodation: | Hotel 4 star |
| Car/transport type: | |

Accommodation summary

| | |
|--------|------------------|
| Day 1 | 4-4.5 Star Hotel |
| Day 2 | 4-4.5 Star Hotel |
| Day 3 | 4-4.5 Star Hotel |
| Day 4 | 4-4.5 Star Hotel |
| Day 5 | 4-4.5 Star Hotel |
| Day 6 | 4-4.5 Star Hotel |
| Day 7 | 4-4.5 Star Hotel |
| Day 8 | 4-4.5 Star Hotel |
| Day 9 | 4-4.5 Star Hotel |
| Day 10 | 4-4.5 Star Hotel |
| Day 11 | 4-4.5 Star Hotel |
| Day 12 | 4-4.5 Star Hotel |
| Day 13 | 4-4.5 Star Hotel |
| Day 14 | 4-4.5 Star Hotel |
| Day 15 | 4-4.5 Star Hotel |
| Day 16 | 4-4.5 Star Hotel |
| Day 17 | 4-4.5 Star Hotel |