

Hiking Adventure in South Island

Begin your journey in Queenstown and set off on the world-renowned Routeburn Track with expert local guides, exploring alpine peaks, ancient forests, and crystal-clear rivers. Then, travel through the stunning landscapes of Wānaka and over the Haast Pass to the wild and beautiful West Coast. Experience the thrill of a heli-hike on Franz Josef Glacier—an unforgettable encounter with towering ice formations and breathtaking views. Conclude your adventure with a ride aboard the iconic TranzAlpine train, one of the world's great rail journeys, as you cross the Southern Alps en route to Christchurch.

The rates displayed for this tour are based on a per person occupancy in the Routeburn Multishare Rooms. These rooms have shared bathroom facilities and are in rooms with up to 6 pax on the Milford Track. For double, twin or single room occupancy, kindly contact our sales consultants.

Starts in: Queenstown
Finishes in: Christchurch
Length: 9days / 8nights
Accommodation: Boutique Lodges & Hotels
Can be customised: Yes

This itinerary can be customised to suit you perfectly. We can add more days, remove days, change accommodations, mix it up, add activities to suit your interests or simply design and create something from scratch. Call us today to get your custom New Zealand itinerary underway.



Inclusions:

Includes: All coach transport
Includes: Afterhours emergency support while touring
Included activity: Electronic Travel Guide and In-Country Support App
Included activity: The Visitor Promise - Cultural Learning Course
Included activity: Routeburn Track 3 Day/2 Night Guided Walk with Ultimate Hikes
Included activity: Franz Josef Glacier Heli-hike with Franz Josef Glacier Guides
Included activity: Private Transfer from Christchurch Accommodation to Christchurch International Airport with Christchurch Touring Company

Includes: All pick ups/drop offs at destinations
Included activity: Private Transfer Queenstown Airport to your Accommodation
Included activity: Time Tripper Cinematic Experience
Included activity: TSS Earnslaw Cruise and Walter Peak Gourmet BBQ Dinner
Included activity: Queenstown to Franz Josef via Wānaka Small Group Tour with Cheeky Kiwi - Lunch Included
Included activity: Franz Josef to Christchurch Tour with TranzAlpine Train via Hokitika with Cheeky Kiwi Travel - Lunch Included
: 8 breakfasts, 4 lunches, 3 dinners

Day 1



Private Transfer Queenstown Airport to your Accommodation

On arrival you will be met by a private driver and delivered to your Queenstown accommodation.

Welcome to Queenstown

Renowned for its adrenaline inducing activities Queenstown is synonymous with adventure. Parked on the shores of Lake Wakatipu this small alpine town is nestled below soaring vistas of The Remarkables Mountain Range. While arguably the brightest gem in New Zealand's crown, Queenstown offers far more than an action-packed getaway. Spend time on the Gibbston wine trail and end with a meal at Michelin star chef Josh Emett's restaurant, Rata. Take a trip down memory lane on a 100 year old steamship the TSS Earnslaw. Soak in the scenery on your walk around the lake, or venture further afield into Fiordland National Park. Head over the hill to resort town Wanaka, or re-live scenes from Lord Of The Rings by four wheel drive. But - if you really do want that rush - head out on the Shotover Jet, dive off the Nevis Bungy, freefall on the Canyon swing or Zip line the Gondola. Just be sure it's done on an empty stomach & don't say we didn't warn you!

Time Tripper Cinematic Experience

Queenstown's only underwater experience takes you on a journey through time and legend beginning many millions of years ago. Your time travel pilot will guide you back 90 million years, through the time of the dinosaurs, take you to when New Zealand was formed, fly you deep into the earth when the Southern Alps were created and through the glacier that carved out Lake Wakatipu. Ending in present-day Queenstown, you then experience adventure activities you can do & all from the comfort of your rumbling seat!

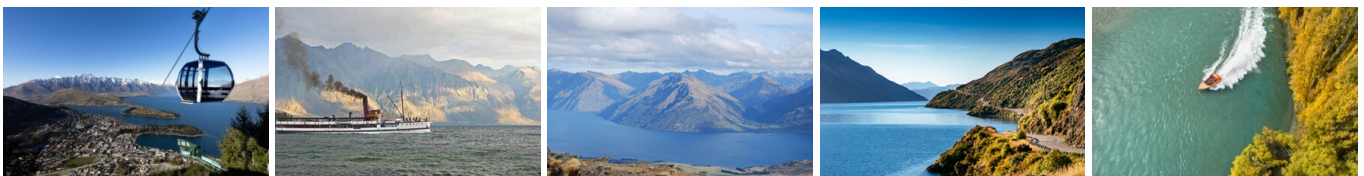
You then experience 10 & 15 minutes of underwater viewing where you can feed the famous diving ducks, slinky eels and rainbow & brown trout that lie beneath.

Your accommodation: Novotel Queenstown Lakeside

Novotel Queenstown Lakeside is centrally located, offering a modern stay just steps from the town centre and nestled beside Lake Wakatipu. Contemporary rooms feature stunning mountain views or peaceful scenes of the gardens. Enjoy modern amenities and easy access to all Queenstown adventures.



Day 2



Explore Queenstown

Well-known as New Zealand's 'adventure capital', Queenstown is home to a range of adventures, from the world's first and most famous bungy jumps to jet boat thrills, white-water rafting, and skydiving. However, Queenstown offers far more than a fast-paced, action-packed holiday. Settled on the shores of beautiful Lake Wakatipu beneath a soaring panorama of the Remarkables Mountain Range, this alpine town is surrounded by many historic, gastronomic, and scenic wonders. Take a stroll through the beautiful lakefront parks and gardens, browse through market stalls on weekends, dine in wonderful al-fresco restaurants, or ride on the 100-year-old historic Steamship - TSS Earnslaw to Walter Peak Station. Take the Queenstown Gondola up to Bob's Peak and soak up the panoramic views of the magnificent lake and mountain ranges. And after all of that, if you do want the adrenaline rush, Queenstown is known for taking your pick from the Shotover Jet, Canyon Swing, Zipline, Luge, or Heli-hike.

SUGGESTED ACTIVITY - Shotover Jet Canyon Jet Boat Ride

Shotover Jet is the only company permitted to operate in the Shotover River Canyons. It's a thrilling ride! Skim past rocky outcrops at close range in your Shotover Jet 'Big Red', as you twist and turn through the narrow canyons at breathtaking speeds. And a major highlight - hold tight for the world-famous Shotover Jet full 360-degree spins! It is important you read and understand the risks associated with this activity. For more information please see here.

Routeburn Track Briefing

Please check in at 13:45 on the day prior to your walk for a group pre-track briefing. The briefing is held at the Ultimate Hikes Centre, Ground Floor, The Station Building, Duke Street Entrance, Queenstown. At the briefing, you will have the opportunity to confirm your dietary, medical information and emergency contact details. You will be able to pick up any gear you need to borrow from us or purchase any last-minute items from our shop. The customer service staff will also give you an overview of what to expect while you are on track. If you cannot make the pre-track briefing, please contact Reservations on +64 3 450 1940 or info@ultimatehikes.co.nz as soon as possible.

TSS Earnslaw Cruise and Walter Peak Gourmet BBQ Dinner

Enjoy a quintessential Kiwi experience, a delicious gourmet BBQ buffet meal, and a farm demonstration in a stunning lakeside setting. Take in the stunning views of Lake Wakatipu and its surroundings as you cruise across the lake to the historic Walter Peak high country farm aboard the TSS Earnslaw Steamship. Enjoy the ambiance of the heart of the stately homestead while your Colonel's Homestead Restaurant chef prepares a gourmet BBQ dinner. Your seasonal menu includes an extensive selection of local New Zealand produce, including succulent meats and a selection of delicious vegetables and salads. Complete your meal with your choice of delicious desserts, or New Zealand cheeses. After dinner, watch the farm dogs in action with a sheep-herding demonstration and say hello to the other farm animals. Finally, cruise home under the southern stars and enjoy the fresh night air as the lights of Queenstown draw ever closer.

Your accommodation: Novotel Queenstown Lakeside

Novotel Queenstown Lakeside is centrally located, offering a modern stay just steps from the town centre and nestled beside Lake Wakatipu. Contemporary rooms feature stunning mountain views or peaceful scenes of the gardens. Enjoy modern amenities and easy access to all Queenstown adventures.

Meals included: Breakfast, Dinner



Day 3



Routeburn Track 3 Day/2 Night Guided Walk with Ultimate Hikes

The Routeburn Track traverses wild and scenic mountain country between the Hollyford and Dart Valleys at the base of New Zealand's Southern Alps. Since the 1880's the Routeburn Track has proved to be one of the most accessible and popular journeys into New Zealand's forests and mountains. The Routeburn Track passes through two national parks, Fiordland and Mount Aspiring, and is part of Te Wahipounamu, South West New Zealand World Heritage Area. The area is a haven for native birdlife: The Robin, Fantail, Parakeet, Bellbird, Yellowhead and watch out for the resident Kea at Routeburn Falls! The variety of landscapes will also astound you: Mountainous peaks, sheer rock faces, alpine basins, pristine lakes, cascading waterfalls, luxuriant forest, turquoise rivers and million-dollar views around every corner.

The Routeburn Track Guided Walk is a 3 day / 2 night Queenstown to Queenstown all-inclusive walk traversing New Zealand's Southern Alps. The package includes all transport, private or shared accommodation in custom built lodges, meals, snacks, backpacks and rain jackets and you will be led by expert Ultimate Hikes guides. It is important you read and understand the risks associated with this activity. For more information please [click here](#).

Queenstown to Mackenzie Lodge

The day begins early with a coach ride to the Divide, stopping in Te Anau for morning tea on the way. At the Divide, make sure you collect your lunch from the guides before setting off. The track begins with a steady climb up through Silver Beech forest to the turn off to Key Summit. Leave your pack at the turn off before climbing to the Summit for great views and a wetlands walk. Collect your pack, and it's a short walk down to Lake Howden for lunch. In the afternoon, the track gradually climbs to the 80m (240ft) Earland Falls. Stop for a break at the base pool. The track then traverses around the mountain side to the Orchard. Beyond, you'll climb for a short section before a steep descent to Mackenzie Lodge.

Your accommodation: Mackenzie Lodge

Mackenzie Lodge is a front-row seat to the dramatic theatre of the Southern Alps. After a day traversing the emerald landscapes of the Routeburn Track, this lodge emerges as a haven of warmth and architectural elegance.

Meals included: Breakfast, Lunch, Dinner



Day 4



Lake Mackenzie to Routeburn Falls Lodge

The track starts just past Lake Mackenzie and rises up through ancient beech forest emerging out of the treeline for stunning views of the lake below. At the top of the zig zags is Ocean Peak Corner. On a clear day you'll have a full panorama of the Darran Mountains across the Hollyford Valley, to the distant Tasman Sea at Martin's Bay. Follow the track along the mountain face and ask your guides to point out the native flora, including mountain daisies, buttercups, gentians and edelweiss. After lunch at the Harris Saddle, if track and weather conditions allow, you can climb Conical Hill for a panoramic view of the surrounding peaks. The track continues around Lake Harris, before descending into the upper basins of the Routeburn Valley skirting the Routeburn Falls. Spend your final night at the aptly named Routeburn Falls Lodge. Today's hike will be 11 km (6.9 miles) and will last about 4-6 hours.

Your accommodation: Routeburn Falls Lodge

Routeburn Falls Lodge is about high-altitude drama. Perched on a rock face right next to the thundering cascades of the Routeburn Falls, this lodge offers a bird's-eye view over the sprawling alpine meadows and the valley floor far below. All lodges have drying rooms, flush toilets and hot showers complete with soap, shampoo and conditioner.

Meals included: Breakfast, Lunch, Dinner



Day 5



Routeburn Falls to Queenstown

The track descends from the lodge through Red Beech forest to the alpine pastures of the Routeburn Flats. Picnic beside the Routeburn river at Forge Flat. The track shadows the river through the beech forest to the Road End. Take the nature walk at the detour to read more about the native forest and listen for native birds in the valley. At Road End the coach will be waiting to take you back to Queenstown, stopping at the small town of Glenorchy for refreshments. Today's walk is 9km (5.7 miles) and will take between 3 to 4 hours.

Your accommodation: Novotel Queenstown Lakeside

Novotel Queenstown Lakeside is centrally located, offering a modern stay just steps from the town centre and nestled beside Lake Wakatipu. Contemporary rooms feature stunning mountain views or peaceful scenes of the gardens. Enjoy modern amenities and easy access to all Queenstown adventures.

Meals included: Breakfast, Lunch



Day 6



Queenstown to Franz Josef via Wānaka Small Group Tour with Cheeky Kiwi - Lunch Included

Departing from Queenstown, this journey takes you to the historic Cardrona Hotel, renowned for its rustic charm and spectacular mountain setting. In Wānaka, you'll capture the iconic photo of the Wānaka Tree with Mt Aspiring and the Southern Alps in the background. Continuing past the Clutha River, you'll enjoy scenic stops at Lake Hāwea, Thunder Creek Falls, and Ship Creek, where the rainforest meets the ocean. The tour concludes at Franz Josef, after passing glacial rivers and the picturesque Lake Matheson, a photographer's paradise.

Franz Josef

Franz Josef, named after both the local village and the nearby glacier, holds special significance in Māori culture as "Ko Roimata o Hine Hukatere" – The Tears of the Ice Maiden. This rare glacier is one of only three in the world that descends from alpine heights into a temperate rainforest, almost reaching sea level. New Zealand is home to two of these unique glaciers, Franz Josef and Fox Glacier, both highly accessible and popular with visitors. The best ways to experience the glacier are through scenic flights or, for the adventurous, a heli-hike. You can also enjoy glacier views with a short drive from the village and walking tracks. Beyond the glacier, Franz Josef offers a wealth of adventure activities and beautiful forest and alpine walks, making it a must-visit destination.

Your accommodation: Scenic Hotel Franz Josef Glacier

Only a breath away from the Franz Josef Glacier, Scenic Hotel is located in the heart of Franz Josef Village. Here you will find all of the amenities you would expect, as well as being close to the shops, restaurants and activities on offer in the beautiful Westland region.

Meals included: Breakfast, Lunch



Day 7



Franz Josef Glacier Heli-hike with Franz Josef Glacier Guides

After a thrilling scenic flight, high above the rugged terrain, you will land on the glacier, ready to undertake a guided glacier hike. Your friendly guide will lead you through some of the most pristine and awe-inspiring glacial scenery in the world. Your guide will choose your route carefully as you go and, with an eye for the most spectacular ice formations, you'll soon be making your way through an extraordinary landscape of towering peaks and glistening blue ice. It is important you read and understand the risks associated with this activity prior to travel. For more information please see [here](#).

SUGGESTED ACTIVITY - One Hour Private Tub with Waiho Hot Tubs

Relax and unwind in the soothing comfort of fresh, warm water and aromatic wood smoke. Enjoy your own private tubs, nestled in a lush rainforest setting on New Zealand's West Coast. These wood-fired hot tubs combine the soothing comfort of warm water with the unique atmosphere of wood smoke to give you an unforgettable experience.

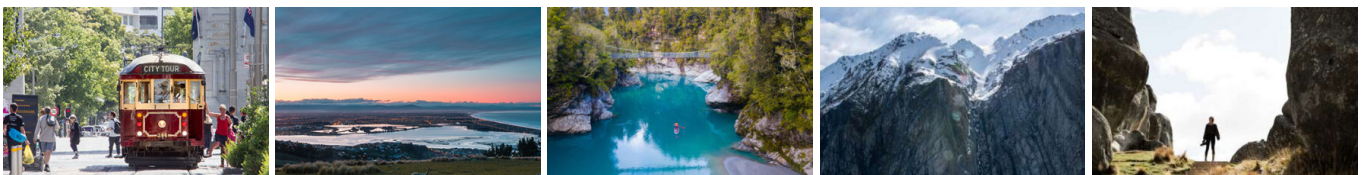
Your accommodation: Scenic Hotel Franz Josef Glacier

Only a breath away from the Franz Josef Glacier, Scenic Hotel is located in the heart of Franz Josef Village. Here you will find all of the amenities you would expect, as well as being close to the shops, restaurants and activities on offer in the beautiful Westland region.

Meals included: Breakfast



Day 8



Franz Josef to Christchurch Tour with TranzAlpine Train via Hokitika with Cheeky Kiwi Travel - Lunch Included

Experience the wild beauty of New Zealand's West Coast like never before on a unique small group tour and TranzAlpine scenic train journey with Cheeky Kiwi Travel. Starting in Franz Josef and ending in Christchurch, this iconic adventure takes you along the stunning, ever-changing coastline, uncovering hidden gems and charming towns along the way. Led by passionate, expert guides, you'll explore rugged landscapes, encounter breathtaking natural wonders, and dive deep into the heart of New Zealand's most spectacular region. Unforgettable moments await on this must-do journey.

Your accommodation: Sudima Christchurch City

Sudima Christchurch City is a brand new 5-star boutique hotel, ideally located on Victoria Street. Amidst an array of cafes, restaurants and bars, stay only a martini olive pips' throw from beautiful Hagley Park and Christchurch's CBD. Experience the garden city in comfort and style.

Meals included: Breakfast



Day 9



Private Transfer from Christchurch Accommodation to Christchurch International Airport with Christchurch Touring Company

A private transfer will collect you from your accommodation and transfer you to Christchurch International Airport in time for your departing flight.

Tour details

Departures:	Daily
Tour type:	Independant Bus & Coach
Starts:	Queenstown
Finishes:	Christchurch
Tour length:	9
Accommodation:	Boutique Lodges & Hotels
Car/transport type:	

Accommodation summary

Day 1	Novotel Queenstown Lakeside
Day 2	Novotel Queenstown Lakeside
Day 3	Mackenzie Lodge
Day 4	Routeburn Falls Lodge
Day 5	Novotel Queenstown Lakeside
Day 6	Scenic Hotel Franz Josef Glacier
Day 7	Scenic Hotel Franz Josef Glacier
Day 8	Sudima Christchurch City