

Hike the Routeburn Track & Explore the South Island

Begin your journey in Queenstown and spend three unforgettable days hiking the world-renowned Routeburn Track. This fully guided experience leads you through a breathtaking landscape of alpine peaks, beech forests, and crystal-clear rivers, with each night spent in the comfort of wilderness lodges. Back in Queenstown, enjoy the scenic beauty of the Dunstan Trail before heading to Dunedin to discover the region's rich heritage and the unique wildlife of the Otago Peninsula. Continue north to the wonderful landscapes of Aoraki / Mount Cook National Park, where glacier-fed lakes and snow-capped peaks await. Your adventure concludes in Christchurch, the South Island's vibrant garden city.

The rates displayed for this tour are based on a per person occupancy in the Routeburn Multishare Rooms. These rooms have shared bathroom facilities and are in rooms with up to 6 pax on the Milford Track. For double, twin or single room occupancy, kindly contact our sales consultants.

Starts in: Queenstown
Finishes in: Christchurch
Length: 12days / 11nights
Accommodation: Hotel 4 star
Can be customised: Yes

This itinerary can be customised to suit you perfectly. We can add more days, remove days, change accommodations, mix it up, add activities to suit your interests or simply design and create something from scratch. Call us today to get your custom New Zealand itinerary underway.



Inclusions:

Includes: Late model rental cars

Includes: Unlimited kms

Included activity: Private Transfer Queenstown Airport to your Accommodation

Included activity: The Visitor Promise - Cultural Learning Course

Included activity: TSS Earnslaw Cruise and Walter Peak Gourmet BBQ Dinner

Included activity: Lake Dunstan & Carrick Winery Experience on E-bike with Kiwi Journeys - Lunch Included

Included activity: Wildlife Peninsula Encounter Tour and Wildlife Cruise with Monarch

: 11 breakfasts, 3 lunches, 3 dinners

Includes: Fully inclusive rental car insurance (excess may apply)

Includes: Afterhours emergency support while touring

Included activity: Electronic Travel Guide and In-Country Support App

Included activity: Glacier Explorers

Included activity: Routeburn Track 3 Day/2 Night Guided Walk with Ultimate Hikes

Included activity: Private Transfer Queenstown Accommodation to Airport (LSQ)

Included activity: Sir Edmund Hillary Alpine Centre Museum and Theatre Explorer Pass with Hermitage

Day 1



Private Transfer Queenstown Airport to your Accommodation

On arrival you will be met by a private driver and delivered to your Queenstown accommodation.

Welcome to Queenstown

Renowned for its adrenaline inducing activities Queenstown is synonymous with adventure. Parked on the shores of Lake Wakatipu this small alpine town is nestled below soaring vistas of The Remarkables Mountain Range. While arguably the brightest gem in New Zealand's crown, Queenstown offers far more than an action-packed getaway. Spend time on the Gibbston wine trail and end with a meal at Michelin star chef Josh Emett's restaurant, Rata. Take a trip down memory lane on a 100 year old steamship the TSS Earnslaw. Soak in the scenery on your walk around the lake, or venture further afield into Fiordland National Park. Head over the hill to resort town Wanaka, or re-live scenes from Lord Of The Rings by four wheel drive. But - if you really do want that rush - head out on the Shotover Jet, dive off the Nevis Bungy, freefall on the Canyon swing or Zip line the Gondola. Just be sure it's done on an empty stomach & don't say we didn't warn you!

SUGGESTED ACTIVITY - Time Tripper Cinematic Experience

Queenstown's only underwater experience takes you on a journey through time and legend beginning many millions of years ago. Your time travel pilot will guide you back 90 million years, through the time of the dinosaurs, take you to when New Zealand was formed, fly you deep into the earth when the Southern Alps were created and through the glacier that carved out Lake Wakatipu. Ending in present-day Queenstown, you then experience adventure activities you can do & all from the comfort of your rumbling seat!

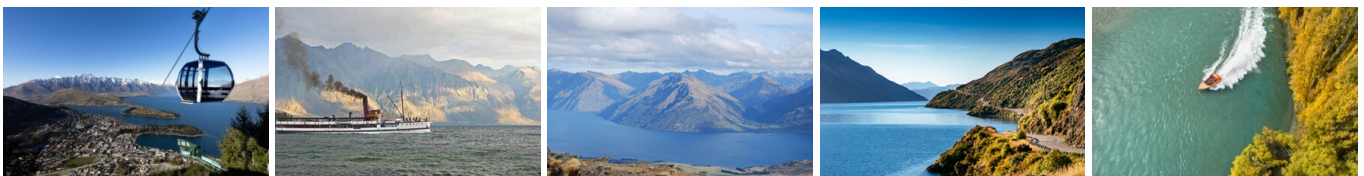
You then experience 10 & 15 minutes of underwater viewing where you can feed the famous diving ducks, slinky eels and rainbow & brown trout that lie beneath.

Your accommodation: Novotel Queenstown Lakeside

Novotel Queenstown Lakeside is centrally located, offering a modern stay just steps from the town centre and nestled beside Lake Wakatipu. Contemporary rooms feature stunning mountain views or peaceful scenes of the gardens. Enjoy modern amenities and easy access to all Queenstown adventures.



Day 2



Explore Queenstown

Well-known as New Zealand's 'adventure capital', Queenstown is home to a range of adventures, from the world's first and most famous bungy jumps to jet boat thrills, white-water rafting, and skydiving. However, Queenstown offers far more than a fast-paced, action-packed holiday. Settled on the shores of beautiful Lake Wakatipu beneath a soaring panorama of the Remarkables Mountain Range, this alpine town is surrounded by many historic, gastronomic, and scenic wonders. Take a stroll through the beautiful lakefront parks and gardens, browse through market stalls on weekends, dine in wonderful al-fresco restaurants, or ride on the 100-year-old historic Steamship - TSS Earnslaw to Walter Peak Station. Take the Queenstown Gondola up to Bob's Peak and soak up the panoramic views of the magnificent lake and mountain ranges. And after all of that, if you do want the adrenaline rush, Queenstown is known for taking your pick from the Shotover Jet, Canyon Swing, Zipline, Luge, or Heli-hike.

Routeburn Track Briefing

Please check in at 13:45 on the day prior to your walk for a group pre-track briefing. The briefing is held at the Ultimate Hikes Centre, Ground Floor, The Station Building, Duke Street Entrance, Queenstown. At the briefing, you will have the opportunity to confirm your dietary, medical information and emergency contact details. You will be able to pick up any gear you need to borrow from us or purchase any last-minute items from our shop. The customer service staff will also give you an overview of what to expect while you are on track.

If you cannot make the pre-track briefing, please contact Reservations on +64 3 450 1940 or info@ultimatehikes.co.nz as soon as possible.

TSS Earnslaw Cruise and Walter Peak Gourmet BBQ Dinner

Enjoy a quintessential Kiwi experience, a delicious gourmet BBQ buffet meal, and a farm demonstration in a stunning lakeside setting. Take in the stunning views of Lake Wakatipu and its surroundings as you cruise across the lake to the historic Walter Peak high country farm aboard the TSS Earnslaw Steamship. Enjoy the ambiance of the heart of the stately homestead while your Colonel's Homestead Restaurant chef prepares a gourmet BBQ dinner. Your seasonal menu includes an extensive selection of local New Zealand produce, including succulent meats and a selection of delicious vegetables and salads. Complete your meal with your choice of delicious desserts, or New Zealand cheeses. After dinner, watch the farm dogs in action with a sheep-herding demonstration and say hello to the other farm animals. Finally, cruise home under the southern stars and enjoy the fresh night air as the lights of Queenstown draw ever closer.

SUGGESTED ACTIVITY - Gondola and 3 Luge Rides with Skyline Queenstown

In the heart of Queenstown, located 450 metres above town in the Ben Lomond Scenic Reserve is the Skyline Complex. A gondola ride to the summit makes for awe-inspiring views of the city surround. Arrive at the complex and wander the outside viewing decks for a picture perfect outlook. Then onto the Luge! The 800 metre luge track offers an exhilarating journey through banked corners, tunnels and dippers.

Your accommodation: Novotel Queenstown Lakeside

Novotel Queenstown Lakeside is centrally located, offering a modern stay just steps from the town centre and nestled beside Lake Wakatipu. Contemporary rooms feature stunning mountain views or peaceful scenes of the gardens. Enjoy modern amenities and easy access to all Queenstown adventures.

Meals included: Breakfast, Dinner



Day 3



Routeburn Track 3 Day/2 Night Guided Walk with Ultimate Hikes

The Routeburn Track traverses wild and scenic mountain country between the Hollyford and Dart Valleys at the base of New Zealand's Southern Alps. Since the 1880's the Routeburn Track has proved to be one of the most accessible and popular journeys into New Zealand's forests and mountains. The Routeburn Track passes through two national parks, Fiordland and Mount Aspiring, and is part of Te Wahipounamu, South West New Zealand World Heritage Area. The area is a haven for native birdlife: The Robin, Fantail, Parakeet, Bellbird, Yellowhead and watch out for the resident Kea at Routeburn Falls! The variety of landscapes will also astound you: Mountainous peaks, sheer rock faces, alpine basins, pristine lakes, cascading waterfalls, luxuriant forest, turquoise rivers and million-dollar views around every corner.

The Routeburn Track Guided Walk is a 3 day / 2 night Queenstown to Queenstown all-inclusive walk traversing New Zealand's Southern Alps. The package includes all transport, private or shared accommodation in custom built lodges, meals, snacks, backpacks and rain jackets and you will be led by expert Ultimate Hikes guides. It is important you read and understand the risks associated with this activity. For more information please [click here](#).

Queenstown to Mackenzie Lodge

The day begins early with a coach ride to the Divide, stopping in Te Anau for morning tea on the way. At the Divide, make sure you collect your lunch from the guides before setting off. The track begins with a steady climb up through Silver Beech forest to the turn off to Key Summit. Leave your pack at the turn off before climbing to the Summit for great views and a wetlands walk. Collect your pack, and it's a short walk down to Lake Howden for lunch. In the afternoon, the track gradually climbs to the 80m (240ft) Earland Falls. Stop for a break at the base pool. The track then traverses around the mountain side to the Orchard. Beyond, you'll climb for a short section before a steep descent to Mackenzie Lodge.

Your accommodation: Mackenzie Lodge

Mackenzie Lodge is a front-row seat to the dramatic theatre of the Southern Alps. After a day traversing the emerald landscapes of the Routeburn Track, this lodge emerges as a haven of warmth and architectural elegance.

Meals included: Breakfast, Lunch, Dinner



Day 4



Lake Mackenzie to Routeburn Falls Lodge

The track starts just past Lake Mackenzie and rises up through ancient beech forest emerging out of the treeline for stunning views of the lake below. At the top of the zig zags is Ocean Peak Corner. On a clear day you'll have a full panorama of the Darran Mountains across the Hollyford Valley, to the distant Tasman Sea at Martin's Bay. Follow the track along the mountain face and ask your guides to point out the native flora, including mountain daisies, buttercups, gentians and edelweiss. After lunch at the Harris Saddle, if track and weather conditions allow, you can climb Conical Hill for a panoramic view of the surrounding peaks. The track continues around Lake Harris, before descending into the upper basins of the Routeburn Valley skirting the Routeburn Falls. Spend your final night at the aptly named Routeburn Falls Lodge. Today's hike will be 11 km (6.9 miles) and will last about 4-6 hours.

Your accommodation: Routeburn Falls Lodge

Routeburn Falls Lodge is about high-altitude drama. Perched on a rock face right next to the thundering cascades of the Routeburn Falls, this lodge offers a bird's-eye view over the sprawling alpine meadows and the valley floor far below. All lodges have drying rooms, flush toilets and hot showers complete with soap, shampoo and conditioner.

Meals included: Breakfast, Lunch, Dinner



Day 5



Routeburn Falls to Queenstown

The track descends from the lodge through Red Beech forest to the alpine pastures of the Routeburn Flats. Picnic beside the Routeburn river at Forge Flat. The track shadows the river through the beech forest to the Road End. Take the nature walk at the detour to read more about the native forest and listen for native birds in the valley. At Road End the coach will be waiting to take you back to Queenstown, stopping at the small town of Glenorchy for refreshments. Today's walk is 9km (5.7 miles) and will take between 3 to 4 hours.

Your accommodation: Novotel Queenstown Lakeside

Novotel Queenstown Lakeside is centrally located, offering a modern stay just steps from the town centre and nestled beside Lake Wakatipu. Contemporary rooms feature stunning mountain views or peaceful scenes of the gardens. Enjoy modern amenities and easy access to all Queenstown adventures.

Meals included: Breakfast, Lunch



Day 6



Lake Dunstan & Carrick Winery Experience on E-bike with Kiwi Journeys - Lunch Included

Your day begins in Queenstown where you will be transferred to Cromwell the starting point of your adventure. You'll get things underway with a boat trip on The Lake Dunstan Explorer, which will immerse you in the sheer scenic beauty of the lake and its surroundings, as well as providing a view of the trail ahead. You'll be set down in Clyde to commence your e-bike ride along the Lake Dunstan Trail. This trail guides you through the utterly unique and captivating scenery of Central Otago, following the shores of Lake Dunstan, the course of the Kawarau River, and the flow of the mighty Clutha River, connecting the towns of Clyde and Cromwell in an awesome one-day experience. Enjoy a wine tasting and pizza at Carrick Winery, along the Lake Dunstan Trail, before pedalling the final 10km to your destination. Here you will be transferred back to Queenstown. Ready for the challenge? This 43km ride is rated for intermediate cyclists. Please watch this safety briefing and verify your fitness level before booking.

Your accommodation: Novotel Queenstown Lakeside

Novotel Queenstown Lakeside is centrally located, offering a modern stay just steps from the town centre and nestled beside Lake Wakatipu. Contemporary rooms feature stunning mountain views or peaceful scenes of the gardens. Enjoy modern amenities and easy access to all Queenstown adventures.

Meals included: Breakfast



Day 7



Private Transfer Queenstown Accommodation to Airport (LSQ)

You will be collected from your hotel and transferred to Queenstown airport to meet your flight.

Collect Rental Car

This tour's from price includes an intermediate-sized vehicle, setting you up for comfortable travels. Yet, we understand every adventure is unique! Feel free to select the perfect wheels from our incredible collection of rental cars, spanning from economy hatchbacks to premium SUVs.

Queenstown to Dunedin

Your route today is a historic one with many small towns along the way. Go through the Kawarau Gorge and stop at one of its renowned wineries. The gorge is also home to the world's first commercial bungee jumping operation and a viewing platform lets you watch others as you build the courage to try it yourself - or not! A little further you'll come to Cromwell, sitting beside the man-made Lake Dunstan - created when the valley was flooded in 1992 as part of the hydro electric scheme. As a result, much of the original town is now submerged, but several historic buildings were relocated to 'Old Cromwell Town'. Continue on through the Otago Goldfields. Pass the townships of Alexandra, Lawrence and Roxburgh - once with booming populations three times their current at the height of the 1800's gold-rush. Many of the old settlements remain and are worth a look if you can spare the time. Alexandra in more recent times has become the 'stone fruit capital' of New Zealand - named for its ideal fruit growing climate. As you drive further south the landscape changes to rolling hills and windswept farmland - melding fluidly with the rugged coast of Dunedin, your destination for the night.

Dunedin

Dunedin, known in Māori as Ōtepoti, is referred to as the "Edinburgh of the Southern Hemisphere". The city has a rightly deserved reputation as one of the best-preserved Victorian and Edwardian cities in the Southern Hemisphere. Of particular note is Dunedin Railway Station, built 1904 - 1906, and St Paul's Cathedral in the Octagon. The Otago Museum is renowned for its Māori and Pacific Island collections and natural history displays. A visit to the Speights, New Zealand's oldest brewery, is also considered a must while in Dunedin. The Botanic Gardens is a great spot and at the right time of year, you can witness the Rhododendron Dell in bloom. The Otago Peninsula is the only home in the world to the Northern Royal Albatross. The Peninsula can be visited for the day from Dunedin and the stunning harbor landscape and wildlife are worth exploring. High among the rolling hills of the Peninsula is Larnach Castle, the grand home of an early politician. Construction of the castle began in 1871 and was completed 12 years later. From here, views out to sea and back towards the city emphasize the singular beauty of Dunedin and its jewel-like harbor.

Your accommodation: Scenic Hotel Dunedin City

Just two blocks from the Octagon in the heart of the city, Scenic Hotel Dunedin City is close to shops, parks and the best city attractions and services. The hotel provides excellent 4-star accommodation to Dunedin's visitors.

Meals included: Breakfast



Day 8



Wildlife Peninsula Encounter Tour and Wildlife Cruise with Monarch

Join a small-group bus tour led by a local guide across the Otago Peninsula, featuring stunning harbour views, rural landscapes, and unique wildlife. Visit a remote beach to spot sea lions, take a Monarch Wildlife Cruise to see albatross, seals, and rare seabirds, and explore a Yellow-eyed Penguin conservation reserve with hidden viewing hides. This unforgettable journey blends breathtaking scenery with intimate wildlife encounters before a relaxed return to Dunedin.

Walking tracks on the Otago Peninsula

There are a number of short walks to enjoy on the Peninsula. The information below is provided by the Department of Conservation. Sandfly Bay

Walking Time: 1 hr return walk from carpark

Getting there - drive is approximately 25 minutes from the centre of Dunedin. Tunnel Beach

Walking Time: 1 hour / 2km return walk from carpark

Getting there - drive is approximately 15 minutes south from the centre of Dunedin. Sandymount

Walking Time: Lovers Leap 50 min return walk from carpark or Sandymount Circuit 1 hr return walk from carpark

Getting there - drive is approximately 30 minutes from the centre of Dunedin. Allans Beach

Walking Time: 5 min walk to the beach from carpark

Getting there - drive is approximately 40 minutes from the centre of Dunedin.

SUGGESTED ACTIVITY - Larnach Castle and Gardens

Larnach Castle, New Zealand's only castle, was built in 1871 by politician and merchant William Larnach, a visionary who played a key role in shaping the country's early history. Constructed for his beloved first wife, Eliza, the castle's shell took 200 workmen three years to complete, followed by twelve years of intricate interior craftsmanship. Perched high on the Otago Peninsula, the castle offers stunning views over Dunedin City. Its gardens hold International Garden of Significance status and feature a unique collection of antiques, including a rare nine-piece Totara knot suite. The Ballroom Café provides the perfect spot to relax and enjoy refreshments while reflecting on your visit. The ballroom itself has a fascinating history, having once served as an asylum, an antique sales room, and even a sheep pen before its beautiful restoration. With a self-guided tour, you can explore the castle and gardens at your own pace.

Your accommodation: Scenic Hotel Dunedin City

Just two blocks from the Octagon in the heart of the city, Scenic Hotel Dunedin City is close to shops, parks and the best city attractions and services. The hotel provides excellent 4-star accommodation to Dunedin's visitors.

Meals included: Breakfast



Day 9



Dunedin to Mt Cook National Park

Heading north from Dunedin your first stop should be Moeraki to explore the famous and unique boulders strewn on the beach. Before heading inland along the Waitaki Valley you pass through the historic township of Oamaru and its Stone buildings. Take time to head into the old quarter and if your timing is right you may get to see some of the local resident little blue penguins. The Waitaki Valley makes a large contribution to New Zealand's electricity supply with its 3 hydro dams. Arriving into Oamaru you are now truly in the high country but don't think these vast empty lands are useless, these are some of the country's most productive merino sheep stations. The turquoise waters of Lake Pukaki guide you the final 45 minutes to Aoraki Mount Cook Village

Aoraki-Mt Cook National Park

At 3754m Aoraki-Mt Cook is Aotearoa-New Zealand's highest mountain, located deep in the heart of the Southern Alps. As well as its impressive beauty, Aoraki-Mt Cook National Park is also home to a huge range of awe-inspiring sights and activities. Take to the air with Mt Cook Ski Planes for a scenic flight that includes a glacier landing. At around 27 kilometres long the Tasman Glacier is New Zealand's longest and a Glacier Explorers tour allows you to see its unique features up close.

There are many short hikes in and around the park and these are well signposted around the village. Those with an interest in the night sky should take a Big Sky Stargazing tour with the Hermitage Hotel. The region is considered to have one of the clearest night skies in the world and is one of the few gold-rated dark sky reserves worldwide.

Visit the Sir Edmund Hillary Alpine Centre for insight into this region's mountain climbing history. You'll also learn of Sir Ed's incredible achievements and his dedication to helping others around the world.

Walking Tracks in Aoraki-Mt Cook National Park

Aoraki-Mt Cook Village offers a variety of short scenic walks suitable for all ages and fitness levels. Start your adventure at the Department of Conservation Information Centre, where you can learn about track conditions, local history, and the area's wildlife. Here are a few popular walks to explore: Bowen Bush Walk: 10-minute return Glencoe Walk: 10-minute return Red Tarns Track: 2-hour return Kea Point Walk: 2-hour return Sealy Tarns Track: 3 - 4 hours return Please be aware that at Aoraki/Mount Cook, you will need to pay for parking at the White Horse Hill car park. The cost is \$5 per hour or \$25 for the full day. A 20-minute free period is available for quick drop-offs.

Sir Edmund Hillary Alpine Centre Museum and Theatre Explorer Pass with Hermitage

A tribute to New Zealand's Sir Edmund Hillary, a humanitarian, ambassador, and one of the world's greatest explorers. The centre showcases the Aoraki Mount Cook region, the history of climbing, and early transport used throughout the region. This comprehensive museum details the life of Sir Edmund Hillary, the Hermitage, and provides access to the 126-seat custom-designed theatre. Check out the daily film schedule which includes 3D Movies, documentaries, and 360-degree digital dome features.

SUGGESTED ACTIVITY - The Panorama Room 3-course Dinner with The Hermitage Hotel

Since first opening its doors in 1969, The Panorama Room has gained a reputation as being one of the best restaurants in New Zealand. This reputation is reflected in the numerous awards the restaurant has received over the years. A simple philosophy of using just the freshest, local ingredients, in particular from New Zealand's South Island, is still the secret to its success today. The menu has a strong international influence and reflects both the establishment's taste and the fact that most of the chefs have travelled and worked widely throughout the world.

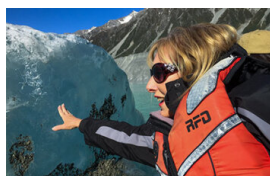
Your accommodation: Hermitage Hotel Room Mount Cook View

The Hermitage Hotel ringed by magnificent snow-capped peaks of the Southern Alps, is a world-renowned tourist destination and has been an icon of superior accommodation and dining since 1884.

Meals included: Breakfast



Day 10



Glacier Explorers

Experience 500-year-old icebergs up close on the Aoraki-Mt Cook terminal lake. The Glacier Explorers tour is the only one of its kind in New Zealand and one of only three in the world! Very few glaciers terminate into lakes and even fewer of them are accessible. See towering ice cliffs and floating icebergs from the safety of a specially designed boat. These boats provide a safe way to view unseen and inaccessible areas of New Zealand's largest glacier The Tasman.

SUGGESTED ACTIVITY - The Panorama Room 3-course Dinner with The Hermitage Hotel

Since first opening its doors in 1969, The Panorama Room has gained a reputation as being one of the best restaurants in New Zealand. This reputation is reflected in the numerous awards the restaurant has received over the years. A simple philosophy of using just the freshest, local ingredients, in particular from New Zealand's South Island, is still the secret to its success today. The menu has a strong international influence and reflects both the establishment's taste and the fact that most of the chefs have travelled and worked widely throughout the world.

Your accommodation: Hermitage Hotel Room Mount Cook View

The Hermitage Hotel ringed by magnificent snow-capped peaks of the Southern Alps, is a world-renowned tourist destination and has been an icon of superior accommodation and dining since 1884.

Meals included: Breakfast



Day 11



Aoraki/Mt Cook National Park to Christchurch

Leaving Aoraki Mt Cook National Park, travel a short distance for a stop at the visitor centre on the southern shores of Lake Pukaki. Learn about the formation of the region and take in the spectacular views of Aoraki-Mount Cook. Along the way, you'll reach Lake Tekapo which also displays the same reflective qualities as Lake Pukaki, making the waters bright turquoise. It's a great place to take a scenic flight, soak in a hot spring or just marvel at the magnificent views. From here you travel through Burkes Pass and into the rich farming valley that surrounds Geraldine. Continue across the vast Canterbury Plains to Christchurch.

Christchurch

Christchurch known in Māori as Ōtautahi, is the largest metro area in the South Island. Commonly referred to as New Zealand's "Garden City", Christchurch is home to one of the biggest public parks in the country, and beautiful botanic gardens. The city was hit with devastating earthquakes in 2010 and 2011, now the city crosses the line between its English heritage and a new modern architecture. To take in some arts and culture, pay a visit to the Canterbury Museum or the Christchurch Art Gallery. Take a step back in time with a tram around the city or punt along the Avon River. If tasting your way around the city is your means of travel, try out a cultural eating tour. A short drive from the CBD will lead you to the outskirts of the Banks Peninsula beachside suburb of Sumner or through the tunnel to Lyttelton Harbour which hosts fantastic markets on Saturday mornings.

SUGGESTED ACTIVITY - Kai Safari with Amiki Cultural Food Tours

Immerse yourself in the vibrant atmosphere of the new city while exploring its emerging foodie scene. Learn about the lives of early Māori and their contemporary lifestyle. Uncover hidden gems and hear stories of how Ōtautahi-Christchurch envisions the future. Enjoy visits to beloved modern New Zealand restaurants, where you can sample seasonal shared plates made from local produce. Indulge in new favourite dishes, savouring a variety of local food and beverages, each with its own unique story that highlights the region's offerings..

Your accommodation: Sudima Christchurch City

Sudima Christchurch City is a brand new 5-star boutique hotel, ideally located on Victoria Street. Amidst an array of cafes, restaurants and bars, stay only a martini olive pips' throw from beautiful Hagley Park and Christchurch's CBD. Experience the garden city in comfort and style.

Meals included: Breakfast



Day 12



SUGGESTED ACTIVITY - International Antarctic Centre General Admission

The International Antarctic Centre aims to recreate the atmosphere and environment of Antarctica, providing visitors with an interactive, fun, and educational experience. Feel the full Four Seasons of Antarctica, where you'll experience a custom-built snow and ice experience, then warm up in the Scott Base interior exhibit, a replica Antarctic field camp, or other informative displays in the gallery. You'll also learn about life in modern-day Antarctica, view real little blue penguins, and experience a thrilling ride in a Hagglund all-terrain vehicle.

Return Your Vehicle to Christchurch Airport

It's time to return your rental car and let the South Island journey come to an end. If time allows spend the day exploring more of Christchurch, we'd suggest a leisurely drive up the Port Hills for some great sites and then over to the harbour of Lyttleton, before circling through the tunnel and back to the airport to continue your journey home.

Farewell from Aotearoa / New Zealand

Bid farewell to Aotearoa / New Zealand, taking with you unforgettable memories of its breathtaking landscapes and incredible adventures. In Māori, it is said mā te wā, which is not goodbye, it is see you soon!

Tour details

Departures:	Daily
Tour type:	South Island Self Drive
Starts:	Queenstown
Finishes:	Christchurch
Tour length:	12
Accommodation:	Hotel 4 star
Car/transport type:	

Accommodation summary

Day 1	Novotel Queenstown Lakeside
Day 2	Novotel Queenstown Lakeside
Day 3	Mackenzie Lodge
Day 4	Routeburn Falls Lodge
Day 5	Novotel Queenstown Lakeside
Day 6	Novotel Queenstown Lakeside
Day 7	Scenic Hotel Dunedin City
Day 8	Scenic Hotel Dunedin City
Day 9	Hermitage Hotel Room Mount Cook View
Day 10	Hermitage Hotel Room Mount Cook View
Day 11	Sudima Christchurch City