



## Exclusive South Island Retreat

Discover the South Island in unmatched style on a luxury tour that pairs breathtaking landscapes with world-class retreats. Begin in Christchurch with a scenic journey aboard the TranzAlpine Scenic Plus train, crossing alpine passes and lush valleys. Travel effortlessly by helicopter to exclusive lodges like Flockhill, The Lindis, and Blanket Bay, where luxury and nature unite in harmony. Bask in the tranquillity of Mt. Cook Lakeside Retreat and conclude your journey at the refined Otahuna Lodge, a masterpiece of heritage and elegance. This unforgettable escape redefines indulgence with seamless travel, stunning locations, and extraordinary experiences.



Starts in: Christchurch  
 Finishes in: Christchurch  
 Length: 14days / 13nights  
 Accommodation: Luxury Lodges  
 Can be customised: Yes



This itinerary can be customised to suit you perfectly. We can add more days, remove days, change accommodations, mix it up, add activities to suit your interests or simply design and create something from scratch. Call us today to get your custom New Zealand itinerary underway.



### Inclusions:

Includes: All coach transport

Includes: Afterhours emergency support while touring

Included activity: The Visitor Promise - Cultural Learning Course



Included activity: Mt Cook Retreat Wine Cellar and Stargazing

Included activity: Private Heli transfer from Mount Cook Retreat to Otahuna Lodge with GCH Aviation

Included activity: Private transfer accommodation to Christchurch Train Station with Christchurch Touring

Included activity: Private Transfer from Arthurs Pass to Flockhill

Included activity: Private Heli transfer from Flockhill Lodge to The Lindis with Heletranz

Included activity: Fiordland's Finest Combo FLY - CRUISE - HELI with The Helicopter Line



Includes: All pick ups/drop offs at destinations

Included activity: Private Transfer Christchurch International Airport to Christchurch Accommodation

Included activity: Private Heli transfer from Blanket Bay Lodge to Mount Cook Retreat with Heletranz

Included activity: Lavish West Coast Cuisine Adventure with Mackenzie Helicopters (Private Charter)

Included activity: Private transfer Otahuna Lodge to Christchurch Airport

Included activity: TranzAlpine Scenic Train: Christchurch to Arthurs Pass Scenic Plus with Great Journeys NZ

Included activity: Adventure Experiences at Flock Hill

Included activity: Private Heli Transfer from The Lindis to Blanket Bay Lodge with Glacier Southern Lakes Helicopters

: 13 breakfasts, 3 lunches, 12 dinners

## Day 1



### Private Transfer Christchurch International Airport to Christchurch Accommodation

On arrival, you will be met by a private driver and transferred to your Christchurch accommodation.

### Welcome to Christchurch City

New Zealand's garden city is steadily being transformed into a vibrant urban destination. Encompassing a large green belt, it is known for its wide tree lined avenues and lush gardens. A great way to explore the city or easy way to see the sights or ride the historic trams across town to the renowned botanic gardens and the unique cardboard Transitional Cathedral, that's right it is built of cardboard!

### Christchurch

Christchurch known in Māori as Ōtautahi, is the largest metro area in the South Island. Commonly referred to as New Zealand's "Garden City", Christchurch is home to one of the biggest public parks in the country, and beautiful botanic gardens. The city was hit with devastating earthquakes in 2010 and 2011, now the city crosses the line between its English heritage and a new modern architecture. To take in some arts and culture, pay a visit to the Canterbury Museum or the Christchurch Art Gallery. Take a step back in time with a tram around the city or punt along the Avon River. If tasting your way around the city is your means of travel, try out a cultural eating tour. A short drive from the CBD will lead you to the outskirts of the Banks Peninsula beachside suburb of Sumner or through the tunnel to Lyttleton Harbour which hosts fantastic markets on Saturday mornings.

### Your accommodation: The George Hotel

The George is the essence of supreme comfort. The award-winning 5 star hotel is opposite Hagley Park and just a few minutes stroll from the Botanic Gardens. It also has an award-winning restaurant, 50 Bistro onsite.



## Day 2



### Private transfer accommodation to Christchurch Train Station with Christchurch Touring

A private driver will collect you from your accommodation and transfer you to the Christchurch train station in time for your train journey.

### TranzAlpine Scenic Train: Arthurs Pass to Christchurch Scenic Plus with Great Journeys NZ

Embark on a captivating journey from Christchurch to Arthur's Pass. Great Journeys New Zealand's Scenic Plus carriage provides comfort and vast panoramic views, making the TranzAlpine scenic train journey the perfect way to explore the 'Great Divide' and the indomitable spine of mountains that partition New Zealand's South Island. Scenic Plus offers an all-inclusive experience on the unique TranzAlpine scenic rail journey to invigorate all the senses! Enjoy epic scenery while you savour regionally inspired cuisine paired with sumptuous wine and beer, all from the comfort of your luxurious seat—a hosted dining experience like no other. Simply relax, sink back in your seat, and soak up the incredible scenery.

### Private Transfer from Arthurs Pass to Flockhill

Your driver will meet you at Arthur's Pass Train Station and take you to Flockhill.

### Flockhill Luxury Stay

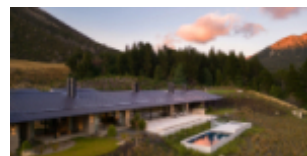
Step into 36,000 acres of stunning alpine landscape and discover luxury adventure vacations in New Zealand's Southern Alps. The new Flock Hill offers an inspiring blend of exploration and harmony with nature. With pristine lakes, hidden caves, sweeping tussock fields, and towering mountains, Flock Hill is one of the most breathtaking destinations for adventure seekers. Create unforgettable memories with custom-designed activities, savor exceptional dining, and feel connected each morning as you step out into the expansive surroundings.



### Your accommodation: Flockhill - Villas

Adventurous spirits with a sophisticated palate are invited to indulge in the Flockhill experience. Nestled within the expansive station, Flockhill's Alpine Lodge stands as a tranquil observer of life in the breathtaking Southern Alps.

Meals included: Breakfast, Dinner



---

## Day 3



### Flockhill Luxury Stay

Set in an exclusive wilderness where nothing is manufactured, Flockhill inspires adventure and exploration. Activities arranged by the lodge offer a unique taste of Flockhill, shared in an intimate setting with fellow guests. You might embark on a scenic journey into the station's remote backcountry, gaining an appreciation for New Zealand's legendary farming heritage. Spend time with the animals, learn the art of dog-whistling, and watch as skilled dogs muster a flock of sheep. Alternatively, you might hop on an e-bike to explore the Lake Track, visit Lake Pearson, or set out on a scenic hike.

---

### Your accommodation: Flockhill - Villas

Adventurous spirits with a sophisticated palate are invited to indulge in the Flockhill experience. Nestled within the expansive station, Flockhill's Alpine Lodge stands as a tranquil observer of life in the breathtaking Southern Alps.

Meals included: Breakfast, Lunch, Dinner



---

## Day 4



### Adventure Experiences at Flock Hill

Surrender to the wilderness and discover something new today. Flock Hill offers a wide range of curated activities across the station, from horseback riding and rock climbing to biking, ATV tours, fly fishing, and more. Each activity provides a unique opportunity to experience the rugged beauty of Canterbury and the Southern Alps.

---

### Your accommodation: Flockhill - Villas

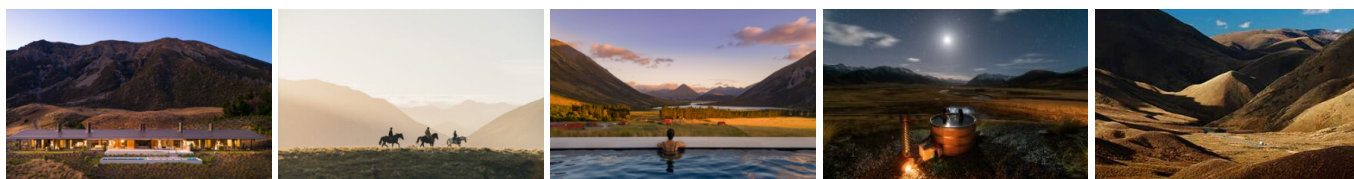
Adventurous spirits with a sophisticated palate are invited to indulge in the Flockhill experience. Nestled within the expansive station, Flockhill's Alpine Lodge stands as a tranquil observer of life in the breathtaking Southern Alps.

Meals included: Breakfast, Lunch, Dinner



---

## Day 5



## Private Heli transfer from The Lindis to Flockhill Lodge with Heletranz

Private helicopter transfer from Flockhill Lodge to The Lindis.

---

### The Lindis Dining

At The Lindis, dining is a harmonious blend of exceptional cuisine and breathtaking scenery. The lodge's chefs create exquisite dishes using the finest locally sourced, seasonal ingredients, crafting menus that highlight the vibrant flavours of New Zealand. From leisurely breakfasts to indulgent multi-course dinners, each meal is thoughtfully paired with premium New Zealand wines for a truly immersive culinary experience. Set within the stunning Ahuriri Valley, the dining spaces offer panoramic views that enhance every bite, whether you're savouring a meal in the elegant dining room or a private setting.

---

### Your accommodation: The Lindis

Near the bottom of the habitable world is the breathtaking and pristine Ahuriri Valley. Carved over millions of years by the once fierce glacial waters of the Ahuriri River, the valley is now a tranquil, yet comfortably rugged slice of paradise in New Zealand's South. And resting almost imperceptibly on the valley floor is The Lindis, a truly unique luxury lodge.

Meals included: Breakfast, Dinner



## Day 6



### The Lindis

Nestled in the heart of New Zealand's pristine Ahuriri Valley, The Lindis Lodge is a luxurious retreat that offers an unparalleled connection to nature. Designed to blend seamlessly with its surroundings, the lodge's striking architecture mirrors the contours of the valley, creating a sense of harmony and serenity. Guests are treated to breathtaking views of the surrounding mountains, rivers, and rolling hills from every corner of the property. The Lindis Lodge provides an intimate and exclusive experience, with elegantly appointed suites that feature contemporary design, natural materials, and floor-to-ceiling windows. Activities abound, from fly fishing in the crystal-clear waters of the Ahuriri River and horse trekking across the high-country landscapes, to hiking and mountain biking through the rugged terrain. For those seeking tranquility, the lodge offers relaxation spaces and indulgent fine dining, where locally sourced ingredients are transformed into exquisite dishes paired with premium New Zealand wines.

---

### Your accommodation: The Lindis

Near the bottom of the habitable world is the breathtaking and pristine Ahuriri Valley. Carved over millions of years by the once fierce glacial waters of the Ahuriri River, the valley is now a tranquil, yet comfortably rugged slice of paradise in New Zealand's South. And resting almost imperceptibly on the valley floor is The Lindis, a truly unique luxury lodge.

Meals included: Breakfast, Lunch, Dinner



## Day 7



### Private Heli Transfer from The Lindis to Blanket Bay Lodge with Glacier Southern Lakes Helicopters

On this private scenic helicopter flight, you will be transferred from The Lindis to Blanket Bay Lodge.

---



## Blanket Bay Dining

Blanket Bay has a commitment to nurturing the creativity and skills of young chefs and this has been rewarded with a string of awards for the Blanket Bay chefs over the years. Current Executive Chef Corey Hume is deeply passionate about his craft, he also champions distinctly New Zealand cuisine. "I love the possibilities that the joy of food can bring to people in their daily lives", states Corey. Blanket Bay features the best of New Zealand's vineyards and is especially proud to offer award-winning Pinot Noirs, Chardonnays, Sauvignon Blancs, and Rieslings grown and bottled in nearby Central Otago. Dinner is served in the elegant Lake View Dining Room with its beamed ceiling and stone fireplace. For a more intimate affair, reserve our Wine Cave – a perfect venue for private dining for up to six people. On warmer evenings, under a clear southern sky, The Terrace is a magnificent setting with the fire behind and the mountain and lake vistas unfolding around you.

## Your accommodation: Blanket Bay

The Lodge at Blanket Bay sits right on the edge of Lake Wakatipu amongst extensive grounds. One of New Zealand's finest lodges it is built in the style of an alpine lodge and finished with native New Zealand timber and stone. Just 30 minutes from Queenstown this exclusive lodge is a sanctuary.

Meals included: Breakfast, Dinner



## Day 8



### Blanket Bay

Nestled amidst rugged snow-capped peaks of the Southern Alps on the shores of Lake Wakatipu is New Zealand's finest Lodge – Blanket Bay. In this spectacular corner of New Zealand discover endless ways to restore your physical and spiritual well-being. There is nowhere else on Earth where there are so many activities so close by – fly-fishing and heli-skiing, the country's best hiking on the Routeburn or Milford Tracks, jet boating and kayaking, 4WD tours, horse riding, art trails and vineyards, plus flight-seeing over the World Heritage Fiordland National Park and Milford Sound. And let's not forget the numerous international standard golf courses around Queenstown.

Activities available from Blanket Bay (enquire for pricing):

At Blanket Bay, guests can immerse themselves in a variety of outdoor adventures set against some of New Zealand's most breathtaking landscapes. Experience a magical horseback ride on Wyuna Station, where riders of all levels can explore the stunning high-country terrain. Take to the skies on a private two-hour scenic helicopter tour of Milford Sound and Fiordland, departing from the lodge's lawns to reveal glaciers, coastal fiords, and majestic Mt. Tutoko. For those who enjoy exploring on foot, the area offers incredible hiking and scenic walks, with options to be guided through remote gems like The Paradise or Routeburn Valleys. Fly fishing enthusiasts can cast their line in nearby rivers, streams, or the lake edge, with guided fishing and gear hire available for a chance to reel in impressive trout. Adventures at Blanket Bay promise unforgettable experiences in every direction.

## Your accommodation: Blanket Bay

The Lodge at Blanket Bay sits right on the edge of Lake Wakatipu amongst extensive grounds. One of New Zealand's finest lodges it is built in the style of an alpine lodge and finished with native New Zealand timber and stone. Just 30 minutes from Queenstown this exclusive lodge is a sanctuary.

Meals included: Breakfast, Dinner



## Day 9



### Fiordland's Finest Combo FLY - CRUISE - HELI with The Helicopter Line

Experience Milford Sound / Piopiotahi by taking to the skies in two different types of aircraft: one way by fixed-wing plane and the other by helicopter. This adventure includes a stunning 2-hour cruise and is a bucket list experience not to be missed! It is important to read and understand the risks associated with this activity. A full risk disclosure can be found here.

## Your accommodation: Blanket Bay

The Lodge at Blanket Bay sits right on the edge of Lake Wakatipu amongst extensive grounds. One of New Zealand's finest lodges it is built in the style of an alpine lodge and finished with native New Zealand timber and stone. Just 30 minutes from Queenstown this exclusive lodge is a sanctuary.

Meals included: Breakfast, Dinner



---

## Day 10



### Private Heli transfer from Blanket Bay Lodge to Mount Cook Retreat with Heletranz

You will be transferred on a private helicopter from Blanket Bay Lodge to Mount Cook Lake Side Retreat.&nbsp;

---

### Mt Cook Lakeside Retreat Dining

Dining at Mt. Cook Lakeside Retreat is a culinary journey that combines exceptional flavors with breathtaking views of the Southern Alps and Lake Pukaki. The retreat's chefs craft gourmet dishes inspired by fresh, locally sourced ingredients, celebrating the best of New Zealand's produce. Each meal is thoughtfully prepared, offering a perfect balance of creativity and authenticity. Guests can savor their dining experience in the elegant Pukaki Observatory, under a canopy of stars, or in the comfort of their private villa. Paired with a selection of fine New Zealand wines, dining at Mt. Cook Lakeside Retreat is as memorable as its stunning surroundings.

---

### Mt Cook Retreat Wine Cellar and Stargazing

Located in the heart of the Aoraki Mackenzie International Dark Sky Reserve, with no light pollution. Join your guide in the underground wine cellar for a wine and whisky experience and then move through to Pukaki Observatory for an observing and astrophotography tour of the night sky through the 6 inch refractor telescope.

---

## Your accommodation: Mt Cook Lakeside Retreat

Mt Cook Lakeside Retreat offers exclusive accommodation, set on the shores of Lake Pukaki overlooking Mt Cook National Park. After a day of exploring relax in your private peaceful outdoor spa pool.

Meals included: Breakfast, Dinner



---

## Day 11



### Lavish West Coast Cuisine Adventure with Mackenzie Helicopters (Private Charter)

Climb on board your own private helicopter and fly over New Zealand largest glaciers and tallest peaks with your experienced pilot. Get up close to New Zealand's highest mountain, Aoraki and explore the ancient blue ice of the glaciers. Once you've flown over the mighty Alps you will discover the magic of the West Coast landscape, snow capped mountains descend into lush green coastal rainforests as you come into land on a secluded West Coast beach. Sip drinks beside your own private bonfire as your pilot dons a wetsuit and catches fresh crayfish straight from the sea. Climb back onboard for another exhilarating scenic flight before your own private dining experience high in the alpine with freshly caught crayfish.

## Your accommodation: Mt Cook Lakeside Retreat

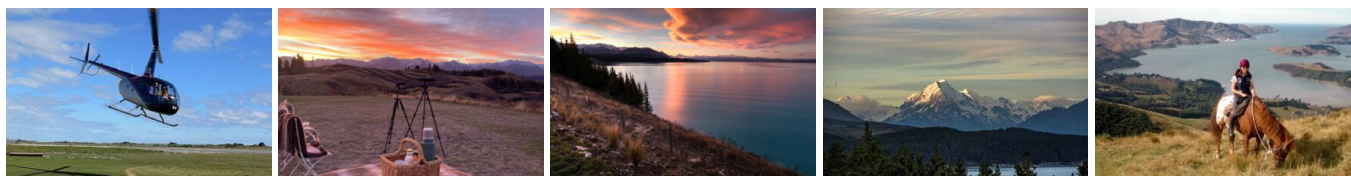
Mt Cook Lakeside Retreat offers exclusive accommodation, set on the shores of Lake Pukaki overlooking Mt Cook National Park. After a day of exploring relax in your private peaceful outdoor spa pool.

Meals included: Breakfast, Dinner



---

## Day 12



### Private Heli transfer from Mount Cook Retreat to Otahuna Lodge with GCH Aviation

Enjoy a private helicopter transfer from Mount Cook Retreat to Otahuna Lodge.

---

## Otahuna Lodge Dining

The cuisine celebrates the best of seasonal New Zealand produce, with an emphasis on fresh Otahuna estate-grown offerings. Dinner is a five-course chef's degustation menu which changes daily, making use of the fresh produce sourced from the property's potager garden and orchard. Honest, uncluttered flavours, the finest local ingredients and elegantly restrained presentation are the hallmarks of the Otahuna table. At dinner, guests dine communally in the opulent formal dining room - ornate original wallpaper, a roaring fire and sparkling candlesticks exemplify the gracious living of the Victorian era. Alternatively, they may retreat to a private table for two in the sunken wine cellar, the intimate library, the drawing room turret, or a location of their choosing.

---

## Your accommodation: Otahuna Lodge

Otahuna Lodge is an exclusive country estate. Each suite retains architectural features from the 19th century such as ornate original fireplaces, carved inglenooks and stained glass windows. All luxury suites offer super-king beds, fine custom-made linens, toiletries by Penhaligons of London, deep bathtubs and separate rain showers.

Meals included: Breakfast, Dinner



---

## Day 13



## Otahuna Lodge

Otahuna Lodge is a beguiling Victorian mansion that offers its guests a unique sense of wonder and discovery. New Zealand's largest private historic residence has been revitalized with luxury accommodation, glorious gardens and sophisticated cuisine. The spectacular 118-year-old gardens of Otahuna were laid out and cultivated under the direction of A. E. Lowe who trained at Kew Gardens, London. Wide vistas over the lawn and lake contrast beautifully with intimate walks which wind through heavily wooded areas. The gardens of the country estate offer a range of guest amenities and activities including swimming, tennis, croquet and petanque among others. Activities – for current pricing please enquire at the Lodge – At Otahuna Lodge, guests can indulge in a variety of activities that highlight the region's charm and the lodge's exceptional offerings. Join Executive Chef Jimmy McIntyre for a hands-on, three-hour cooking class, where you'll explore the philosophies behind the Lodge's renowned cuisine, spend time in the organic potager garden, and learn expert techniques in the kitchen. For relaxation, enjoy a 60 or 90-minute massage in the tranquil setting of the estate's historic laundry buildings. Adventure seekers can try their hand at fly fishing with the guidance of a local expert, targeting brown and rainbow trout or Chinook salmon during the fishing season. Horseback riding excursions, tailored to all experience levels, are available nearby with private guides, while hiking and biking trails showcase Canterbury's diverse landscapes. Guests can also take advantage of complimentary bicycles to explore the scenic 6-kilometre loop around the Otahuna Valley.



## Your accommodation: Otahuna Lodge

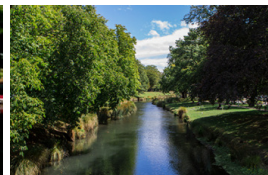
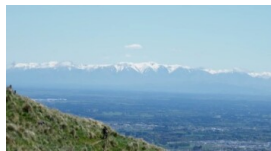
Otahuna Lodge is an exclusive country estate. Each suite retains architectural features from the 19th century such as ornate original fireplaces, carved inglenooks and stained glass windows. All luxury suites offer super-king beds, fine custom-made linens, toiletries by Penhaligons of London, deep bathtubs and separate rain showers.

Meals included: Breakfast, Dinner



---

## Day 14



### Private transfer Otahuna Lodge to Christchurch Airport

A private transfer will collect you from your accommodation and transfer you to Christchurch Airport in time for your departing flight.

---

### Farewell from Aotearoa / New Zealand

Bid farewell to Aotearoa / New Zealand, taking with you unforgettable memories of its breathtaking landscapes and incredible adventures. In Māori, it is said mā te wā, which is not goodbye, it is see you soon!

---



## Tour details

Departures:	Daily
Tour type:	
Starts:	Christchurch
Finishes:	Christchurch
Tour length:	14
Accommodation:	Luxury Lodges
Car/transport type:	

---

## Accommodation summary

Day 1	The George Hotel
Day 2	Flockhill - Villas
Day 3	Flockhill - Villas
Day 4	Flockhill - Villas
Day 5	The Lindis
Day 6	The Lindis
Day 7	Blanket Bay
Day 8	Blanket Bay
Day 9	Blanket Bay
Day 10	Mt Cook Lakeside Retreat
Day 11	Mt Cook Lakeside Retreat
Day 12	Otahuna Lodge
Day 13	Otahuna Lodge