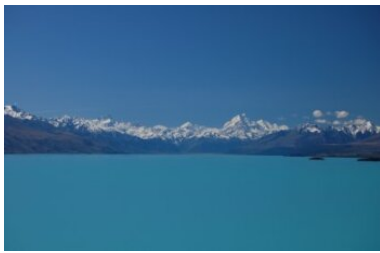


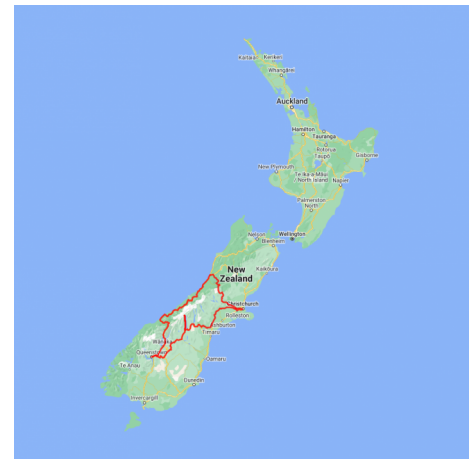
Southern Highlights and Routeburn Track Guided Walk

Starting and finishing in Christchurch this tour allows time to self explore the tracks and trails of Mt. Cook National Park before venturing south and embarking on the 3 day Routeburn Track Guided Walk. This fully guided and supported 3 day hike is with Ultimate Hikes and you spend the evenings in the wonderfully equipped lodges. From Queenstown head north to the West Coast and the glacier region before returning to Christchurch on board the Tranz Alpine Scenic Train.



Starts in: Christchurch
 Finishes in: Christchurch
 Length: 12days / 11nights
 Accommodation: Hotel 4 star
 Can be customised: Yes

This itinerary can be customised to suit you perfectly. We can add more days, remove days, change accommodations, mix it up, add activities to suit your interests or simply design and create something from scratch. Call us today to get your custom New Zealand itinerary underway.



Inclusions:

Includes: Late model rental cars

Includes: Unlimited kms

Includes: Airport & ferry terminal rental car fees

Includes: Comprehensive tour pack (detailed itinerary, driving instructions, map/guidebooks, brochures)

Included activity: Private transfer Christchurch International Airport to your accommodation

Included activity: TranzAlpine Scenic Train: Greymouth to Christchurch

Included activity: Private transfer accommodation to Christchurch Airport

: Meals included: 11 breakfasts, 3 lunches, 3 dinners

Includes: Fully inclusive rental car insurance (excess may apply)

Includes: GPS navigation

Includes: Additional drivers

Includes: 24/7 support while touring New Zealand

Included activity: Electronic Travel Guide and In-Country Support App

Included activity: Private Transfer Christchurch Train Station to your accommodation

Included activity: Routeburn Track 3 day Guided Walk with Ultimate Hikes

Day 1



Private transfer Christchurch International Airport to your accommodation

On arrival, you will be met by a private driver and transferred to your Christchurch accommodation.

Welcome to Christchurch City

Christchurch New Zealand's garden city is steadily being transformed into a vibrant urban destination. Encompassing a large green belt, it is known for its wide tree lined avenues and lush gardens. A great way to explore the city or easy way to see the sights or ride the historic trams across town to the renowned botanic gardens and the unique cardboard Transitional Cathedral, that's right it is built of cardboard!

SUGGESTED ACTIVITY - Willowbank Wildlife Reserve

Nowhere else in New Zealand will you find such a wide range of New Zealand wildlife so close to you. Willowbank provides you with a "Kiwi Guarantee" and is home to New Zealand's largest and most accessible kiwi viewing area. With this unique experience, you will see New Zealand's natural splendour first hand, and view Kiwis that are not hidden behind glass. You will explore one of the most complete selections of New Zealand native and introduced wildlife in natural bush surroundings. Much of the Willowbank wildlife wander free and is able to be petted and fed.

Choose to explore the reserve yourself, or for an up-close Kiwi experience, you can take a guided tour.

Your accommodation: The George Hotel

The George is the essence of supreme comfort. The award-winning 5 star hotel is opposite Hagley Park and just a few minutes stroll from the Botanic Gardens. It also has an award-winning restaurant, 50 Bistro onsite.



Day 2



Collect your rental car

This tour can be priced with any of the rental cars available in our fantastic range, from economy hatchbacks to prestige saloons and SUV's.

Christchurch to Aoraki Mt Cook National Park

Today you'll drive through the heart of the South Island, crossing the vast Canterbury plains. Catch your breath in Geraldine before continuing through Fairlie. Ascending Burkes pass you'll come to the picturesque lakeside town of Tekapo.

Follow the road and take in the view of Aoraki Mt Cook (New Zealand's tallest mountain) from the shores of Lake Pukaki, known for its glacier fed turquoise blue colour. Continue along the lake to your final destination Mt Cook Village.

Your accommodation: Hermitage Hotel, Aoraki Wing Premium

The Hermitage Hotel ringed by magnificent snow-capped peaks of the Southern Alps, is a world-renowned tourist destination and has been an icon of superior accommodation and dining since 1884.

Meals included: Breakfast



Day 3



Aoraki-Mt Cook National Park

At 3754 metres Aoraki-Mt Cook is New Zealand's highest mountain, located deep in the heart of the Southern Alps. From the Visitor Centre at the southern end of Lake Pukaki, you will be rewarded with magnificent views of this immense peak. As well as its impressive beauty, Mt Cook National Park is also home to a huge range of awe-inspiring sights and activities. Take to the air with Mt Cook Ski Planes for a scenic flight that includes a glacier landing. At around 27 kilometres long the Tasman Glacier is New Zealand's longest and a Glacier Explorers tour will give you the opportunity to see its unique features.

There are many short hikes in and around the park and these are well signposted. Those with an interest in the night sky should take a stargazing tour with the Hermitage Hotel. The region is considered to have one of the clearest night skies in the world and is one of the few gold-rated dark sky reserves worldwide.

The Hermitage Hotel complex offers fine dining, multiple cafes and a bar. Due to the remote location of the property, there are no shops and limited supplies at Mt Cook Village. Visit the Sir Edmund Hillary Alpine Centre for insight into this region's mountain climbing history. You'll also learn of Sir Ed's incredible achievements and his dedication to helping others around the world.

The Hooker Valley Track is an iconic track that offers one of the best day hikes in New Zealand. The trail winds through the Hooker Valley, passing swinging bridges, glacier-fed rivers, and offering breathtaking views of Aoraki/Mount Cook and its surrounding peaks. The Kea Point track is an easy walking track offering stunning views of the Mueller Glacier terminal lake and Aoraki/Mount Cook. Suitable for all ages and fitness levels, it's a great option for those looking for a shorter hike with incredible scenery.

Walking tracks in and around Aoraki / Mt. Cook National Park

There are many short scenic walks beginning in and around the Mt Cook Village, suitable for all ages and abilities. Located within the Mount Cook Village is the Department of Conservation information centre, where updates on the track conditions and suitability is available as well as information on the history of the area and its wildlife.

SUGGESTED ACTIVITY - Glacier Explorers Mt. Cook

Experience 500 year old icebergs up-close on the Mt Cook terminal lake. The Glacier Explorers tour is the only one of its kind in New Zealand and one of only three in the world! Very few glaciers terminate into lakes and even fewer of them are accessible. See towering ice cliffs and floating icebergs from the safety of a specially designed boat. These boats provide a safe way to view unseen and inaccessible areas of New Zealand's largest glacier The Tasman.

SUGGESTED ACTIVITY - Sir Edmund Hillary Alpine Centre Museum and Theatre Explorer Pass

A tribute to New Zealand's Sir Edmund Hillary, a humanitarian, ambassador, and one of the world's greatest explorers. The centre showcases the Aoraki Mount Cook region, the history of climbing, and early transport used throughout the region. This comprehensive museum details the life of Sir Edmund Hillary, the Hermitage, and provides access to the 126-seat custom-designed theatre. Check out the daily film schedule which includes 3D Movies, documentaries, and 360-degree digital dome features.

Your accommodation: Hermitage Hotel, Aoraki Wing Premium

The Hermitage Hotel ringed by magnificent snow-capped peaks of the Southern Alps, is a world-renowned tourist destination and has been an icon of superior accommodation and dining since 1884.

Meals included: Breakfast



Day 4



Aoraki Mt Cook National Park to Queenstown

Leaving the alpine region of Aoraki Mt Cook, you'll travel through the lakeside town of Twizel, then a little further to Omarama the gliding capital of New Zealand. Continue on over the Lindis Pass, one of New Zealand's highest roads with a summit of 971 metres. Arrive in the quaint village of Tarras, then continue on a short way to the historic Bendigo Reserve, one of Otago's original gold mining settlements.

Follow the road to Cromwell, and keep going through the sheer cliffs of the Kawarau Gorge towards Gibbston, one of New Zealand's premier wine growing regions. See the historic Kawarau Bridge where you can bungy jump or relax and watch others take the plunge. Approaching Queenstown, the Remarkables mountain range comes into view as you arrive into the adventure capital of New Zealand.

SUGGESTED ACTIVITY - TSS Earnslaw cruise to Walter Peak including gourmet BBQ dinner and a farm tour

Enjoy a quintessential Kiwi experience, a delicious gourmet BBQ buffet meal and a farm demonstration in a stunning lakeside setting. Take in the stunning views of Lake Wakatipu and its surroundings as you cruise across the lake to the historic Walter Peak high country farm aboard the TSS Earnslaw Steamship.

Enjoy the ambience of the heart of the stately homestead while your Colonel's Homestead Restaurant chef prepares a gourmet BBQ dinner. Your seasonal menu includes an extensive selection of local New Zealand produce, including succulent meats and a selection of delicious vegetables and salads. Complete your meal with your choice of delicious desserts, New Zealand cheeses, tea and coffee.

After dinner, watch the farm dogs in action with a sheep-herding demonstration and say hello to the other farm animals. Finally, cruise home under the southern stars and enjoy the fresh night air as the lights of Queenstown draw ever closer.

Your accommodation: Millennium Hotel Queenstown

Right in the heart of the action, the Millennium Hotel is just minutes from Queenstown's central shopping and entertainment district. Outdoor activities such as bungy jumping, white water rafting and jet boating are just some of the easily accessible activities nearby in New Zealand's adventure capital.

Meals included: Breakfast



Day 5



Explore Queenstown

Well-known as New Zealand's 'adventure capital', Queenstown is home to a range of adventures, from the world's first and most famous bungy jumps to jet boat thrills, white-water rafting, and skydiving. However, Queenstown offers far more than a fast-paced, action-packed holiday. Settled on the shores of beautiful Lake Wakatipu beneath a soaring panorama of the Remarkables Mountain Range, this alpine town is surrounded by many historic, gastronomic, and scenic wonders. Take a stroll through the beautiful lakefront parks and gardens, browse through market stalls on weekends, dine in wonderful al-fresco restaurants, or ride on the 100-year-old historic Steamship - TSS Earnslaw to Walter Peak Station. Take the Queenstown Gondola up to Bob's Peak and soak up the panoramic views of the magnificent lake and mountain ranges. And after all of that, if you do want the adrenaline rush, Queenstown is known for taking your pick from the Shotover Jet, Canyon Swing, Zipline, Luge, or Heli-hike.

Leave your vehicle at your Queenstown accommodation

This evening leave your rental car keys with the reception at your accommodation. Make sure you take any items with you and that the car fuel tank is full. The next morning Europcar staff will collect the rental car from your accommodation.

SUGGESTED ACTIVITY - Shotover Canyon River Jet Boat Adventure

Riding the iconic 'Big Red' Jet Boat through the narrow Shotover Canyon is an exhilarating experience not to be missed. Your skilled jet boat driver pushes the boat to 85 kph, skimming across shallow water and past towering canyon walls. This 25 minute white water ride includes 360 degree spins and maximum thrills.

SUGGESTED ACTIVITY - Earnslaw Burn Scenic Helicopter Flight with Heliworks

This is the top pick from the Heliworks team. Lift off from Heliworks for a flight across the Richardson Mountains; fly over schist covered slopes and views of historical gold mining sites on your way to this exclusive landing site. Just after the Dart and Rees rivers meet near Lake Wakatipu you will see Mt Earnslaw (also known by its Maori name of Pikirakatahi) with the Earnslaw Glacier its crowning glory! Fly along the valley before the breath-taking vista of cascading waterfalls and the hanging glacier opens up before you. Enjoy a landing at this magnificent spot; explore the valley with the Earnslaw Glacier towering above you and an astounding number of waterfalls spilling down the valley walls. Return to Heliworks with views of Coronet Peak and Queenstown itself. Trip Duration is 1 hour.

Routeburn Track Briefing

Please check in at 13:45pm on the day prior to your walk for a group pre-track briefing. The briefing is held at the Ultimate Hikes Centre, Ground Floor, The Station Building, Duke Street Entrance, Queenstown. At the briefing, you will have the opportunity to confirm your dietary, medical information and emergency contact details. You will be able to pick up any gear you need to borrow from us or purchase any last minute items from our shop. The customer service staff will also give you an overview of what to expect while you are on track. If you cannot make the pre-track briefing, please contact Reservations on +64 3 450 1940 or info@ultimatehikes.co.nz as soon as possible.

Your accommodation: Millennium Hotel Queenstown

Right in the heart of the action, the Millennium Hotel is just minutes from Queenstown's central shopping and entertainment district. Outdoor activities such as bungy jumping, white water rafting and jet boating are just some of the easily accessible activities nearby in New Zealand's adventure capital.

Meals included: Breakfast



Day 6



Routeburn Track 3 day Guided Walk with Ultimate Hikes

The Routeburn Track traverses wild and scenic mountain country between the Hollyford and Dart Valleys at the base of New Zealand's Southern Alps. Since the 1880's the Routeburn Track has proved to be one of the most accessible and popular journeys into New Zealand's forests and mountains. The Routeburn Track passes through two national parks, Fiordland and Mount Aspiring, and is part of Te Wahipounamu, South West New Zealand World Heritage Area. The area is a haven for native birdlife: The Robin, Fantail, Parakeet, Bellbird, Yellowhead and watch out for the resident Kea at Routeburn Falls! The variety of landscapes will also astound you: Mountainous peaks, sheer rock faces, alpine basins, pristine lakes, cascading waterfalls, luxuriant forest, turquoise rivers and million-dollar views around every corner.

The Routeburn Track Guided Walk is a 3 day / 2 night Queenstown to Queenstown all-inclusive walk traversing New Zealand's Southern Alps. The package includes all transport, private or shared accommodation in custom built lodges, meals, snacks, backpacks and rain jackets and you will be led by expert Ultimate Hikes guides.

Routeburn Day 1 - Queenstown to Mackenzie Lodge

The day begins early with a coach ride to the Divide, stopping in Te Anau for morning tea on the way. At the Divide, make sure you collect your lunch from the guides before setting off. The track begins with a steady climb up through Silver Beech forest to the turn off to Key Summit. Leave your pack at the turn off before climbing to the Summit for great views and a wetlands walk. Collect your pack, and it's a short walk down to Lake Howden for lunch. In the afternoon, the track gradually climbs to the 80m (240ft) Earland Falls. Stop for a break at the base pool. The track then traverses around the mountain side to the Orchard. Beyond, you'll climb for a short section before a steep descent to Mackenzie Lodge.

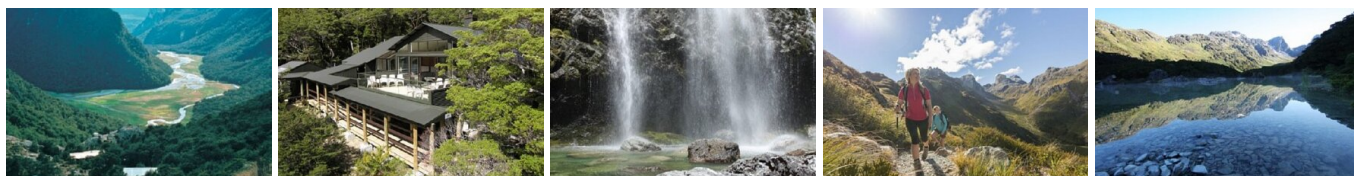
Your accommodation: Routeburn Track Lodges

The Routeburn Track lodges have been purposely designed and built and all lodges have drying rooms, flush toilets and hot showers complete with soap, shampoo and conditioner. The lodge kitchen treats you with a three course dinner and cooked breakfast. Accommodation is in a private room with queen or twin bedding or bunk bed rooms sleeping up to 4.

Meals included: Breakfast, Lunch, Dinner



Day 7



Routeburn Day 2 -Lake Mackenzie to Routeburn Falls Lodge

The track starts just past Lake Mackenzie and rises up through ancient beech forest emerging out of the treeline for stunning views of the lake below. At the top of the zig zags is Ocean Peak Corner. On a clear day you'll have a full panorama of the Darran Mountains across the Hollyford Valley, to the distant Tasman Sea at Martin's Bay. Follow the track along the mountain face and ask your guides to point out the native flora, including mountain daisies, buttercups, gentians and edelweiss. After lunch at the Harris Saddle, if track and weather conditions allow, you can climb Conical Hill for a panoramic view of the surrounding peaks. The track continues around Lake Harris, before descending into the upper basins of the Routeburn Valley skirting the Routeburn Falls. Spend your final night at the aptly named Routeburn Falls Lodge. Today's hike will be 11 km (6.9 miles) and will last about 4-6 hours.

Your accommodation: Routeburn Track Lodges

The Routeburn Track lodges have been purposely designed and built and all lodges have drying rooms, flush toilets and hot showers complete with soap, shampoo and conditioner. The lodge kitchen treats you with a three course dinner and cooked breakfast. Accommodation is in a private room with queen or twin bedding or bunk bed rooms sleeping up to 4.

Meals included: Breakfast, Lunch, Dinner



Day 8



Routeburn Day 3 - Routeburn Falls to Queenstown

The track descends from the lodge through Red Beech forest to the alpine pastures of the Routeburn Flats. Picnic beside the Routeburn river at Forge Flat. The track shadows the river through the beech forest to the Road End. Take the nature walk at the detour to read more about the native forest and listen for native birds in the valley. At Road End the coach will be waiting to take you back to Queenstown, stopping at the small town of Glenorchy for refreshments. Today's walk is 9km (5.7 miles) and will take between 3 to 4 hours.

Your accommodation: Millennium Hotel Queenstown

Right in the heart of the action, the Millennium Hotel is just minutes from Queenstown's central shopping and entertainment district. Outdoor activities such as bungy jumping, white water rafting and jet boating are just some of the easily accessible activities nearby in New Zealand's adventure capital.

Meals included: Breakfast, Lunch, Dinner



Day 9



Collect your rental car

This tour can be priced with any of the rental cars available in our fantastic range, from economy hatchbacks to prestige saloons and SUV's.

Queenstown to Franz Josef Glacier via Wanaka

From Queenstown you'll cross the Crown Range, the highest sealed road in New Zealand to arrive in the Alpine town of Wanaka, gateway to Mt Aspiring National Park. Skirting the shores of both Lake Wanaka and Hawea, you will enter the small town of Makarora. Stop at Blue Pools for a 1-hour return walk through the native beech forest to a glacier-fed swimming hole. Continue on through the remote seaside settlement of Haast before heading up the wild West Coast highway you pass through ancient temperate rainforests while getting sneak peeks of the wild coast beaches occasionally. Paringa Salmon Farm is worth a stop to stretch your legs, feed the fish, and stop for lunch and refreshments. Keep heading North and be sure to enjoy the view of the ever-changing towering snowcapped Southern Alps Mountain Range. Fox Glacier welcomes you first, then comes your destination for the night Franz Josef township.

Your accommodation: Scenic Hotel Franz Josef Glacier

Only a breath away from the Franz Josef Glacier, Scenic Hotel is located in the heart of Franz Josef Village. Here you will find all of the amenities you would expect, as well as being close to the shops, restaurants and activities on offer in the beautiful Westland region.

Meals included: Breakfast



Day 10



Explore Franz Josef

Franz Josef is a small but lively town in the heart of the West Coast, known for its 12 km long glacier. Surrounded by lush rainforest-clad mountains the township has a vibrant and bustling atmosphere. To see the ice from a viewpoint you can walk along the valley floor to the viewpoint below the terminal face. However, to go on the glacier itself you must take a licensed helicopter tour.

SUGGESTED ACTIVITY - Twin Glacier Scenic Helicopter Flight with The Helicopter Line

Take a spectacular scenic flight over two of New Zealand's most famous glaciers. Land at the head of one and view the incredible sight of this frozen river as it winds its way through ancient carved valleys. Should weather not be suitable to take this flight you are able to transfer your booking onto a similar tour on any of the Helicopter Line's operations in Queenstown or Mt Cook.

Your accommodation: Scenic Hotel Franz Josef Glacier

Only a breath away from the Franz Josef Glacier, Scenic Hotel is located in the heart of Franz Josef Village. Here you will find all of the amenities you would expect, as well as being close to the shops, restaurants and activities on offer in the beautiful Westland region.

Meals included: Breakfast



Day 11



Franz Josef to Greymouth Train Station

Today head north along the mighty West Coast highway you pass through ancient temperate rainforests while getting sneak peeks of the wild coast beach occasionally. Whataroa is the next town where you can see one of the world's rarest birds, the New Zealand white heron or Kotuku nest at the Waitangi Roto Nature Reserve, and guided tours from October to March will take you there. Ross is the site of an old gold mining town and some of the old buildings and workings remain. In fact, Ross is still home to one of the few working gold mines left in New Zealand and the local information center offers you the chance to pan for gold. Hokitika is a great place to explore craft and gift stores and head to the coast and take in the endless sea views. The Jade or Greenstone on offer in Hokitika is probably some of the best you will see in the country. The Hokitika Gorge is located 45 minutes inland and offers turquoise waters flowing through a narrow gorge. A great short walk will deliver you to this piece of paradise. Continue on to Greymouth, the largest town on the West Coast and the starting point for the next leg of your journey the TranzAlpine Scenic Train. Drop your rental car at the Greymouth Train Station depot located at the train station building before boarding your train to Christchurch.

TranzAlpine Scenic Train: Greymouth to Christchurch

Considered one of the world's great train journeys, the TranzAlpine Scenic Train takes you from Greymouth to Christchurch. You'll travel across the South Island from the west to the east coast through Arthur's Pass National Park. From the comfort of your carriage see lush beech forest, deep river valleys and the spectacular peaks of the Southern Alps. Descend to the windswept Canterbury Plains before arriving in the city of Christchurch.

Private Transfer Christchurch Train Station to your accommodation

On arrival at the Christchurch train station, you will be met by a private driver and transferred to your accommodation.

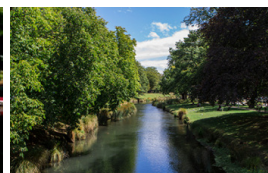
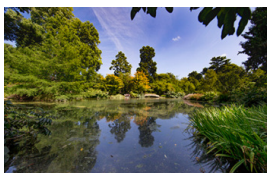
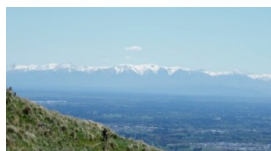
Your accommodation: The George Hotel

The George is the essence of supreme comfort. The award-winning 5 star hotel is opposite Hagley Park and just a few minutes stroll from the Botanic Gardens. It also has an award-winning restaurant, 50 Bistro onsite.

Meals included: Breakfast



Day 12



Private transfer accommodation to Christchurch Airport

A private transfer will collect you from your accommodation and transfer you to Christchurch Airport in time for your departing flight.

Farewell from New Zealand

Bid farewell to New Zealand, taking with you unforgettable memories of its breathtaking landscapes and incredible adventures.

Tour details

Departures:	Daily
Tour type:	South Island Self Drive
Starts:	Christchurch
Finishes:	Christchurch
Tour length:	12
Accommodation:	Hotel 4 star
Car/transport type:	

Included activities

Includes	All breakfasts
Includes	Private airport transfers
Includes	Private train station transfers
Includes	TranzAlpine Train from Greymouth to Christchurch
Includes	Routeburn Track Guided Walk with Ultimate Hikes

Accommodation summary

Day 1	The George Hotel
Day 2	Hermitage Hotel, Aoraki Wing Premium
Day 3	Hermitage Hotel, Aoraki Wing Premium
Day 4	Millennium Hotel Queenstown
Day 5	Millennium Hotel Queenstown
Day 6	Routeburn Track Lodges
Day 7	Routeburn Track Lodges
Day 8	Millennium Hotel Queenstown
Day 9	Scenic Hotel Franz Josef Glacier
Day 10	Scenic Hotel Franz Josef Glacier
Day 11	The George Hotel