

Birds of the North Island Tour

Beginning in Auckland, visit Tiritiri Matangi Island, a renowned sanctuary for rare native birds. Collect your car and head north to the stunning Hokianga, where you'll marvel at Tāne Mahuta during a twilight experience and rejuvenate at Ngāwhā Springs. Next, arrive in Paihia, the heart of the Bay of Islands. Explore Waitangi Treaty Grounds and venture on a magical Puketi Forest night walk, discovering nocturnal wildlife and ancient kauri trees. Continue south to Warkworth for a day at Tāwharanui Marine Reserve, where birdlife thrives in pristine coastal habitats. Travel to Rotorua, where natural wonders abound. Experience the enchanting Glowworm Caves and embark on a full-day birding tour, spotting species like tūī, kākārīki, and fantails. Journey to Napier, where visiting the gannet colony offers incredible close-up encounters with these magnificent seabirds. Conclude your tour in Wellington, exploring the predator-free sanctuary of Kapiti Island, home to rare birds like kākā, kōkako, and little spotted kiwi.

Starts in: Auckland
Finishes in: Wellington
Length: 13days / 12nights
Accommodation: Boutique Lodges & Hotels
Can be customised: Yes

This itinerary can be customised to suit you perfectly. We can add more days, remove days, change accommodations, mix it up, add activities to suit your interests or simply design and create something from scratch. Call us today to get your custom New Zealand itinerary underway.



Inclusions:

Includes: Late model rental cars

Includes: Unlimited kms

Included activity: Private Transfer Auckland Airport to your Auckland Accommodation with Tourcorp

Included activity: Electronic Travel Guide and In-Country Support App

Included activity: Zealandia by Night Wildlife Sanctuary Tour

Included activity: Kapiti Classic Guided Day Tour with Kapiti Island Nature Tours - Lunch Included

Included activity: Matakōhe Kauri Museum

Included activity: Twilight Waipoua Encounter

Included activity: Waitangi Treaty Grounds Guided Tour and Cultural Performance

plus much more...

Includes: Fully inclusive rental car insurance (excess may apply)

Includes: Afterhours emergency support while touring

Included activity: The Visitor Promise - Cultural Learning Course

Included activity: Gannet Safaris

Included activity: Pūkaha Mount Bruce Wildlife Centre General Admission - Open-Dated Voucher

Included activity: Return Ferry to Tiritiri Matangi Island and Guided Walk

Included activity: Manea Footprints of Kupe Guided Tour

Included activity: Ngāwhā Springs

Included activity: Puketi Night Walk with Adventure Puketi

Day 1



Welcome to Auckland

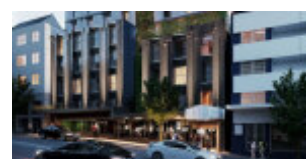
Welcome to Auckland, known in Māori as Tāmaki Makaurau. Auckland is New Zealand's vibrant "City of Sails," and the country's largest metropolitan area. Nestled between the Pacific Ocean and the Tasman Sea. Surrounded by native bush, lush rainforests, and pristine beaches, Auckland is a haven for both adventurers and urban explorers. Wander through world-class museums and galleries in the city centre or enjoy a peaceful retreat at the Auckland Gardens, where stunning landscapes showcase New Zealand's diverse flora. Stroll along the lively waterfront to savour fresh seafood and international cuisine at Viaduct restaurants. For an unforgettable perspective, ascend the iconic SkyTower, New Zealand's tallest structure, and take in panoramic views of the city and its picturesque islands.

Private Transfer Auckland Airport to your Auckland Accommodation with Tourcorp

You will be met at the Auckland airport by the driver and transferred to your Auckland accommodation.

Your accommodation: Abstract Hotel & Residences

Abstract is Auckland's freshest new vibe, blending hotel and residences for urban adventurers. Whether for work, family vacation or romantic escape, come and relax in a comfortable and stylish room. A guest lounge, co-working spaces, library, bar, a restaurant, gym, and a luxury spa are available on site.



Day 2



Return Ferry to Tiritiri Matangi Island and Guided Walk

Situated in the middle of the Hauraki Gulf only a 75 minute ferry trip from Auckland is Tiritiri Matangi Island. One of the world's most successful volunteer conservation projects, it has been re-vegetated with over 300,000 native trees as well as several different species of endangered birds and reptiles. Tiritiri Matangi meaning 'tossed by wind' is an open scientific reserve managed by the Department of Conservation (DOC) in partnership with the Supporters of Tiritiri Matangi.

It's an open sanctuary; status allows for 150 ferry visitors daily - from Wednesday to Sunday. Here you have the opportunity to see first hand some of New Zealand's rarest inhabitants in a natural and protected environment. There are numerous walking tracks throughout the island which vary in length and fitness. Forested walking tracks are well established with custom built boardwalks paving the way through coastal bush. Other tracks include a pathway skirting the perimeter of the island and several roads traversing the interior. The Supporters of Tiritiri Matangi are enthusiastic about sharing the wealth of knowledge they have accumulated. You'll join a 1.5 hour guided experience and learn about the endangered bird life, natural surrounds, revegetation and history of Tiritiri Matangi. Your guide will highlight the best spots to see wildlife on the island, and will help you to identify the bird calls and sounds which echo through the trees. It also be taken up to the visitor centre to view its informative exhibits. Your lunchtime and afternoon will then be free for you to wander the island.

Your accommodation: Abstract Hotel & Residences

Abstract is Auckland's freshest new vibe, blending hotel and residences for urban adventurers. Whether for work, family vacation or romantic escape, come and relax in a comfortable and stylish room. A guest lounge, co-working spaces, library, bar, a restaurant, gym, and a luxury spa are available on site.

Meals included: Breakfast



Day 3



Collect Rental Car

This tour's from price includes an intermediate-sized vehicle, setting you up for comfortable travels. Yet, we understand every adventure is unique! Feel free to select the perfect wheels from our incredible collection of rental cars, spanning from economy hatchbacks to premium SUVs.

Auckland to Matakohē

The first leg of the journey takes you across the Auckland Harbour Bridge and the North Shore suburbs along State Highway 1. Travelling north, you will pass through the historic town of Warkworth before changing to State Highway 12 and heading west to Matakohē.

Matakohē Kauri Museum

The Kauri Museum is located approximately 90 minutes drive north of Auckland, in the rural backdrop of Matakohē. Offering insight into the region's pioneering history, it charts the rise and fall of the great Kauri forests with stunning displays and detailed exhibitions including: The largest collection of Kauri Gum in the world, a fully furnished 1900's era Kauri house, the largest collection of Kauri furniture in the world, a huge 22 metre long Kauri slab and a magnificent collection of original photographs and pioneering memorabilia.

Matakohē to Hokianga

The drive north to Hokianga via the Waipoua Forest and the Kauri Coast takes you along the remote West Coast of the North Island and around one of the world's largest natural harbours, the Kaipara Harbour. Dargaville is a Northland river town with an interesting history and is a great jumping off point from which to explore the Kauri Coast.

From Waipoua Forest continue north to the mouth of the Hokianga Harbour. Stop for a breath of fresh air before and walking to the heads for truly stunning views. As you continue your drive the road takes you inland along the harbour to the small township of Opononi, famous for a friendly dolphin named Opo who swam with the local children in the 1950s.

Your accommodation: The Sands Hotel & Resort Hokianga

Just 3.5 hours from Auckland, get away from the hustle and bustle of the city life at the Sands Hotel, a four star accommodation with world-wide service, overlooking the Hokianga Harbour. Enjoy a relaxing and comfortable stay by the quiet water's edge of the harbour and explore the beautiful surrounding nature with the Waipoua Forest and its famous ancient Kauri tree in the area.

Meals included: Breakfast



Day 4



Hokianga region

Just a three-hour drive north of Auckland lies the Hokianga, a breathtaking estuarine harbour on the North Island's west coast, also known as the Hokianga River. This captivating region is steeped in history, having been inhabited by the Ngāpuhi for centuries before European arrival in the early 19th century. Despite a colourful past of early, often reluctant, settlers, Hokianga holds the distinction of hosting New Zealand's first Catholic mass.

While its impressive sandbar restricts access to small boats, this fourth-largest harbour in New Zealand opens up to 20 kilometres of navigable waters inland. On the northern shore, colossal, ever-shifting sand dunes, reaching up to 200 metres, invite adventurous spirits for thrilling descents.

The charming seaside towns of Omapere and Opononi offer a relaxed escape with holiday homes, craft shops, cafes, and local pubs. Further inland, the historic town of Rawene, with its unique cantilevered wooden buildings over the harbour, serves as a vital ferry point. Catching the Rawene ferry saves approximately an hour on your journey north to Kaitia, allowing you more time to immerse yourself in the Hokianga's rich tapestry of culture, history, and stunning natural beauty.

Manea Footprints of Kupe Guided Tour

Enter Te Hokianga-nui-a-Kupe, our sacred cradle of tribal histories. Walk in the footprints of the Maori ancestor — Kupe the intrepid, Kupe the voyager, Kupe the discoverer.

Experience a Pōwhiri (welcome ceremony) and other rituals and customs experienced through interaction with the descendants of Kupe.

Explore the contemporary cultural centre with carvings and artefacts holding the stories of the past, giving you incredible insight into the history of Aotearoa.

Twilight Waipoua Encounter

Experience the Waipoua Forest at night on this spectacular 4 hour tour. Learn about the rich birdlife and fauna that inhabit the forest, including the carnivorous kauri snail. You'll also get to experience the deep spiritual respect the Maori people have for this place. Your Maori guide will brief you on the protocols for your visit and you once formal greetings have been made you will be allowed to meet the giant Tane Mahuta, or Lord of the Forest - the oldest Kauri tree in the world.

Your accommodation: The Sands Hotel & Resort Hokianga

Just 3.5 hours from Auckland, get away from the hustle and bustle of the city life at the Sands Hotel, a four star accommodation with world-wide service, overlooking the Hokianga Harbour. Enjoy a relaxing and comfortable stay by the quiet water's edge of the harbour and explore the beautiful surrounding nature with the Waipoua Forest and its famous ancient Kauri tree in the area.

Meals included: Breakfast



Day 5



Omapere to Ngawha Springs

Your drive from the coastal charm of Omapere to the rejuvenating thermal pools of Ngāwhā Springs takes you through the heart of the Hokianga and its surrounding landscapes. Begin by heading east along State Highway 12, enjoying the sweeping views of the Hokianga Harbour as you leave the tranquil seaside town behind. The road winds through picturesque countryside, dotted with lush green paddocks and native bush. As you continue inland, the scenery shifts to rolling hills and farmland. Keep an eye out for signs directing you toward Kaikohe. Once you reach the town, follow the road to Ngāwhā Springs, a short distance from Kaikohe. These geothermal pools, famed for their mineral-rich waters, are perfect for a relaxing soak after your drive.

Ngawha Springs

Bathe in the healing waters at Ngawha Springs and let the ancient energy revitalise your senses while the minerals from deep in the earth permeate your body. The mineral-rich hot waters of Ngawha Springs bubble up from deep within the Earth. Nestled in the heart of Te Tai Tokerau, Northland, the springs have a long history of being a restorative and healing place to visit. The people of Ngāpuhi have attended the natural springs to replenish wairua (spirit), alleviate the sensation of pain, and repair common ailments.

Ngawha Springs to Paihia

Leaving the soothing geothermal waters of Ngāwhā Springs behind, head east from Kaikohe toward the bustling coastal town of Paihia, a gateway to the stunning Bay of Islands. The journey takes approximately 30 minutes and offers a delightful mix of rolling countryside and glimpses of subtropical beauty. Take State Highway 12 out of Kaikohe and join State Highway 1, traveling through peaceful farmland and small rural communities. The scenery gradually transforms as you approach the Bay of Islands, with hints of the ocean peeking through the lush vegetation. Upon reaching Paihia, you'll find yourself in a vibrant seaside town buzzing with activity.

Paihia, Bay of Islands

Paihia, an oceanside gem, played a pivotal role in Aotearoa-New Zealand's history. A visit to the Waitangi Treaty Grounds offers a profound look into the signing of the Waitangi Treaty, where 43 Māori chiefs and 39 Crown representatives shaped the nation's future. Beyond its rich history, Paihia is a haven for water-based activities. From sailing through the Hole in the Rock and dolphin spotting to kayaking or fishing, or perhaps a day relaxing on the beach, this picturesque coastal town is the perfect base to explore the stunning Bay of Islands.

Your accommodation: Tarltons Lodge

In your luxury guest room, perched on a hill next to Paihia, you will awaken to nature at its finest with breathtaking sunrises and a spectacular panorama of the sea overlooking the famous Bay of Islands.

Meals included: Breakfast



Day 6



Waitangi Treaty Grounds Guided Tour and Cultural Performance

Waitangi is one of New Zealand's most historic sites where the Treaty of Waitangi was signed in 1840 between the Māori and the British Government. This two day pass allows you access to the Treaty of Waitangi Grounds and includes admission to the Te Kōngahu Museum and Te Rau Aroha Museum and a Maori Cultural performance. During your guided tour, learn about the history of the treaty and discover the stories and events that shaped New Zealand. The cultural performance inside the carved meeting house includes waiata (singing), poi and the haka - a war dance Aotearoa-New Zealand is well known for.

Puketi Night Walk with Adventure Puketi

Uncover the mysteries of the Puketi Forest in this guided adventure through an ancient rainforest spanning 15,000 hectares near the Bay of Islands. Listen to tuis, fantails and Kukupa, and as the sun sets, you will be graced by the nocturnal moreporks and kiwis. Your experienced guide will lead you through the mesmerizing transition from day to night and welcome you to the intriguing world of creepy crawlies and insects that live in the shadows.

Your accommodation: Tarltons Lodge

In your luxury guest room, perched on a hill next to Paihia, you will awaken to nature at its finest with breathtaking sunrises and a spectacular panorama of the sea overlooking the famous Bay of Islands.

Meals included: Breakfast



Day 7



Paihia, Bay of Islands to Warkworth

Embark on a scenic journey south from the coastal beauty of Paihia to the charming town of Warkworth, located in the heart of the Matakana wine region. This drive showcases a mix of Northland's lush countryside, tranquil beaches, and charming small towns. From Paihia, follow State Highway 11 toward Kawakawa, where you can make a quick stop to see the quirky Hundertwasser Toilets, a work of art in themselves. Continue south, merging onto State Highway 1, which will guide you through rolling farmland and dense native bush. Consider a detour to Whangārei, the largest city in Northland, where you can stretch your legs with a walk to the stunning Whangārei Falls or grab a coffee in the vibrant Town Basin.

Back on the highway, the road meanders past small towns like Ruakākā and Waipū, with optional side trips to pristine beaches. As you approach Warkworth, you'll notice the landscape transitioning into vineyards and orchards, a signature of the Matakana region.

Warkworth's relaxed charm, with its boutique shops, cafés, and the nearby Matakana Coast, makes it a great place to end this leg of your journey.

Warkworth

Warkworth, a delightful town boasting a charming array of cafes, restaurants, and art stores, offers the perfect spot to slow down and indulge in some leisurely browsing. This pretty little town serves as a fantastic base for exploring some of Northland's most exquisite natural attractions. Just a short drive east lies Goat Island Marine Reserve, a true underwater paradise. Here, you can take a glass-bottom boat or hire snorkels and fins and immerse yourself in a vibrant aquatic world, swimming amongst thousands of fish that thrive in this protected marine environment. A short distance further, you'll discover Tawharanui Regional Park. This stunning park offers kilometres of picturesque walking tracks, inviting you to explore its diverse landscapes and encounter abundant birdlife.

Tawharanui Marine Reserve

The abundance of fish and edible plants in Tawharanui has provided food to its occupants for the last 1000 years. When Europeans purchased the land in 1873 the timber was milled and the land farmed as well as some parts of it quarried. The parks boundaries were extended in 1981 to create New Zealand's first Marine Protected Area. This prohibits the taking of any marine life from the region and provides a unique environment for snorkelers and divers to experience the many and varied forms of wildlife in this environment. The New Zealand dotterel nests in the sand dunes here and there are many other birds such as the coastal reef heron and spotless crane that also make this place home.

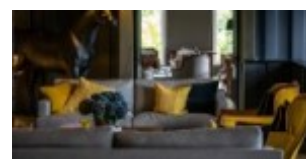
SUGGESTED ACTIVITY - Sculptureum - Gardens and Galleries Experience

This 90-minute self-guided experience host you in a Garden of Creative Diversity with plenty of weird and wonderful art. The tour finishes with the sixth gallery which contains a stunning glass chandelier by American artist, Dale Chihuly. Be sure to indulge at the Rothko Restaurant located on site.

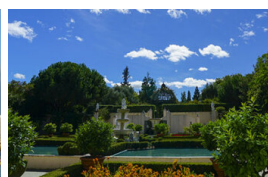
Your accommodation: Woodhouse Mountain Lodge Warkworth

Contemporary secluded villa accommodations in paradise-like grounds are set high above surrounding land, meaning privacy is guaranteed and views extend as far as the Hauraki Gulf. Facilities include a restaurant, outdoor pool, sauna, day spa treatments, cocktail bar, and extensive grounds to explore.

Meals included: Breakfast



Day 8



Warkworth to Rotorua

Continuing south through Auckland, State Highway 1 quickly takes you into rolling green farmland and the rich dairy pasture of the Waikato. The Bombay Hills mark the outer boundary of great Auckland and its here you turn inland to central Waikato. This is hobbit country and the route takes you through the town of Matamata where you can still visit the film locations made famous in the Lord of the Rings trilogy at Hobbiton Movie Set and Farm Tours.

Rotorua

Discover the geothermal, adventure, and cultural wonderland of Rotorua. As you explore, you may see steam rising from cracks in the road, bubbling and hissing water in pools along the lake's edge, and the unmistakable smell of Sulfur. Rotorua is rich in Māori culture and history, with many Māori inhabitants recognising the great potential of the volcanic land. For an outdoor adventure, head to The Redwoods and experience the rainforest treetops from high up. There are a few accessible trails for disabled hikers and great biking trails as well. If you're lucky, you might spot some of New Zealand's native birds, such as the Piwakawaka (Fantail) and the Tūī. Alternatively, enjoy the Lake Tikitapu Blue Lake Walk or explore Kuirau Park, where you'll find bubbling mud pools and steaming lakes. Don't miss the private thermal reserves such as Te Puia and Wai-O-Tapu, where you can walk among bubbling mud pools, spouting geysers, and Sulfur ponds. Just a few minutes from the town centre, the Agrodome and National Kiwi Hatchery offer an insight into nature. Rotorua's rich Māori culture is a must-see. Spend an evening with Te Pā Tū, complete with a traditional-style dinner or stroll along the lake edge to reach one of the country's oldest Māori villages at Ohinemutu. When hunger strikes, visit Eat Street in Rotorua CBD, a vibrant street lined with delicious eateries and restaurants to satisfy any craving. No visit to Rotorua would be complete without experiencing Rotorua's original tourist attraction - a relaxing spa treatment. This town boasts an array of wellness experiences to unwind in. Whether you are seeking adventure, culture, or relaxation, Rotorua offers an unforgettable experience.

Nocturnal Adventure Glow-Worm Tour with Real Rotorua

Explore New Zealand's native forest and wildlife after dark on this guided tour from Rotorua. Discover waterfalls, towering trees, and giant ferns accompanied by thousands of glow worms shining brightly. Watch as your guide points out other nocturnal creatures in the forest. Before departing from Rotorua, get kitted out with the necessary equipment, including specialised flashlights. After a 25-minute drive, the real adventure begins. A 2 km walk under the canopy of a native rainforest where every twist and turn of the trail reveals another surprise. After a walk through the darkness of the native forest, you will be guided by the sound of running water. Towering banks will rise up all around you, and if you turn your flashlights off, you will not be disappointed. Literally thousands of glowworms light up like stars in the night sky, forming their own constellations all around you. Enjoy a trek in the dark and discover something new at every turn of the trail. Top off your stellar evening by relaxing under the stars.

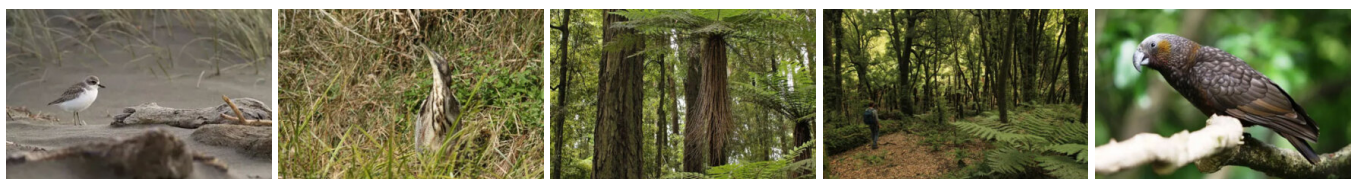
Your accommodation: Regent of Rotorua

Regent of Rotorua Boutique Hotel & Spa occupies a great location within walking distance of the lakefront, the government gardens and the city centres shops and restaurants. Luxury rooms are well equipped and on site facilities include a swimming pool, restaurant and bar and spa treatments.

Meals included: Breakfast



Day 9



Birding Day Tour in Rotorua with Foris Eco Tours - Lunch Included

Join us for New Zealand's ultimate birding adventure! Spend the day exploring diverse habitats, from wetlands to ancient rainforests, and encounter some of the world's rarest birds in their natural environment. Spot iconic species like Bar-tailed godwits, Royal Spoonbills, Kaka, and Wrybill, while learning about vital conservation efforts. This full-day tour offers a unique wildlife experience, starting from Rotorua, Taupo, or Tauranga, and promises an unforgettable connection with nature.

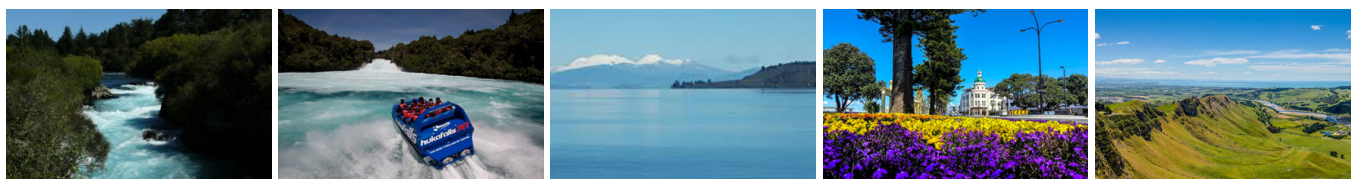
Your accommodation: Regent of Rotorua

Regent of Rotorua Boutique Hotel & Spa occupies a great location within walking distance of the lakefront, the government gardens and the city centres shops and restaurants. Luxury rooms are well equipped and on site facilities include a swimming pool, restaurant and bar and spa treatments.

Meals included: Breakfast, Lunch



Day 10



Rotorua to Napier via Taupō

This drive will take you through the thermal region just south of Rotorua. Home to a plethora of unique geothermal attractions including boiling mud pits, natural hot springs and steaming geysers, this area is a must do before you move on to Napier. Notable attractions are Wai-O-Tapu, Waimangu and Craters of the Moon. Continue on to Taupō and marvel at the lake, a giant crater formed following a volcanic eruption in the year 180 CE. As you approach the town, be sure to stop at Huka Falls to view the spectacular sight of hundreds of cubic metres of water spilling every second down the narrow 11 metre drop. For an extra thrill take a jet-boat ride at the base of the falls. Leaving Taupō, follow the road as it climbs the rugged Ahimanawa Range before descending back down the Pacific Coast to art deco coastal township of Napier.

Napier City

Napier, a coastal gem, is famed for its 1930s Art Deco architecture, the annual Art Deco Weekend, stately Norfolk pines, nearby wineries, and fresh local produce. With a Mediterranean climate and over 2,200 hours of sunshine annually, it boasts a thriving café culture set against stunning heritage buildings. The city center has around 30 cafés within walking distance, while Ahuriri, just beyond Bluff Hill, offers more upscale dining. Marine Parade overlooks the Pacific Ocean and Cape Kidnappers, home to the world's largest mainland gannet colony. Visitors can explore Ocean Spa, the Hawke's Bay Museum, and the National Aquarium of New Zealand. Bluff Hill, a key landmark, provides sweeping views of Napier, Perfume Point, Westshore Beach, and the busy Port of Napier, which exports timber, fruit, and meat worldwide.

In 1931, Napier was devastated by a 7.8-magnitude earthquake, New Zealand's worst natural disaster. Fires ravaged the city. Rebuilding efforts transformed Napier and Hastings into modern cities, while the uplifted Ahuriri Lagoon created much-needed land for expansion.

Gannet Safaris

Drive along the scenic coast from Napier to Te Awanga and join Gannet Safaris Overland and the world's largest, most accessible gannet colony at Cape Kidnappers. Gannet Safaris has been guiding visitors over Cape Kidnappers for over 35 years and their safaris are the only way to be driven right to within a few feet of these remarkable birds. You will travel in comfort in air-conditioned 4 x 4 wheeled vehicles, through Cape Kidnappers Station - traversing riverbeds, broad rolling pastures, stands of native bush, steep gullies and breath-taking inclines. There is a stop on the way at a spectacular cliff top with panoramic views of Hawke Bay right across to Mahia peninsula. The 36km, three hour trip includes a commentary by your tour guide/driver on the farming operation on Cape Kidnappers Station and an introduction to the gannets. On arrival at the gannets you can stretch your legs and take in the scenery from your position at the brink of the cliff's edge, 100 metres above the ocean!

Cape Kidnappers Gannet Beach Adventures

The gannet reserve here is rare in ornithological circles as it contains the largest and most accessible mainland gannet colony in the world. Known to the Maori as Takapu, the gannet is usually an island breeder but has made a notable exception at Cape Kidnappers on the East Coast of the North Island. Nothing will quite prepare you for the experience that awaits, administered by the Department of Conservation, this area presents a special, up close opportunity to observe the Gannet in its natural environment. The Gannet, a member of the Booby family, is related to the families of shags, pelicans and frigate-birds. Adult Australasian Gannets have a wing span of up to 2 metres and an average weight of 2kgs. Whilst ungainly on land, these birds are designed for graceful flying and diving from great heights into the sea to catch fish. As the birds are migratory, the first trip for the new chicks is to Australia where they stay for 2 - 3 years before they return to New Zealand to live. Access to the colony is via a number of methods - a trek around the coast from Te Awanga on foot, sitting on the back of tractors with Gannet Beach Adventures that meander along the beach, overland by 4WD or even on kayaks. There are many sights along the way including spectacular views of stratified rock beds featuring gravels, conglomerate and mudstone. The sea and wind have also carved interesting shapes out of the soft sands and shingles of the cliffs. The best time to go is from early November (hatching time) to late February. The reserve is closed to the public from July to the Wednesday before Labour Day each year. The saddle and Black Reef colonies are closed at all times.

Your accommodation: Art Deco Masonic Hotel

The Art Deco Masonic Hotel occupies a significant historic building on Napier's waterfront and has been richly refurbished in keeping with the Art Deco architecture. With its central location and decadent décor, this is the best place to experience what Napier is famous for.

Meals included: Breakfast



Day 11



Napier to Masterton

The rolling countryside of the Hawke's Bay leads you into some of New Zealand's richest farmland, located around the Manawatu region. Passing along the Manawatu Gorge the Wairarapa welcomes you as you arrive in Masterton, home to the golden shears sheep shearing competition. In the centre of town is the beautiful Queen Elizabeth Park, which has one of the best children's playgrounds in New Zealand as well as a flying fox, paddle boats, bike hire, miniature train, skate park, swing bridge and mini golf course. Just across the road is Aratoi: Wairarapa Museum of Art & History which holds exhibitions of national significance and explores the region's history and stories.

Pūkaha Mount Bruce Wildlife Centre General Admission - Open-Dated Voucher

Set in 940 hectares of forest, Pūkaha is on State Highway 2, half way between Napier and Wellington right at the heart of the Classic New Zealand Wine Trail. A perfect and special stop off point to learn about New Zealand's very special environment. At Pūkaha, they are dedicated to restoring the forest and protecting and nurturing endangered birds and animals – particularly kiwi, kokako, kaka and tuatara. Pūkaha has a very successful breeding programme.

Your entry fee covers seven daily wildlife talks and feeds as well as entry to the nocturnal house where you can see North Island Brown Kiwi. Enjoy a walk through free flight aviary where you can experience the bush as it was hundreds of years ago. Enjoy the birds flying around you while viewing the Whio (Blue duck) and Pateke (Brown Teal) on the river run.

Masterton to Wellington

Continuing south from Masterton you reach the delightful village of Greytown home to the largest concentration of historic wooden buildings in the country. From the Wairarapa you'll cross the Remutaka Ranges and drop towards the impressive deep water harbour of Wellington City. Wellington is home to a selection of great museums such as Te Papa New Zealand's national museum (not to be missed), The National Library and the Museum of Wellington City and Sea. For some great views of the city and the harbour take the Cable Car from Lambton Quay up into the hills of Kelburn, 130 metres above the city. The ride terminates in the botanic gardens, a 26 hectare park with rose gardens, ferns, succulents, exotic trees and native forest displays. If you're feeling energetic take a stroll past the waterfront cafes of Oriental Bay and walk to the top of Mount Victoria, a great vantage point with views across to the Hutt Valley. Wellington has excellent shopping, theatre, cafes and restaurants and being only 2 kilometres wide the majority can easily be explored on foot.

Wellington

Wellington known in Māori as Te Whanganui-a-Tara is home to New Zealand's centre of government. Often referred to as 'mini Melbourne', this windy city is a melting pot of art, culture, food, and fashion. Quirky laneway bars, underground art shows, and hipster eateries make up its inner-city vibe, while a host of sandy beaches outside the urban bustle bring a cheerful holiday feel. Head to Te Papa Museum for a history lesson and a ticket to one of its many international exhibitions or jump aboard the Wellington Cable Car - the only running funicular railway in the country. For those with an eye for boutique, fashion wander through Cuba St to sample some of the city's best vintage stores. Break for coffee at a hipster cafe and be sure to snap a pic outside the 'Beehive', New Zealand's parliamentary debate chamber. Go behind the scenes at Weta Workshop Experience, the Oscar Award Winning design studio behind Lord Of The Rings, The Hobbit, and Avatar. If you're a foodie at heart, a two-hour round trip to Martinborough is a must-do. Take your time as you wind through spectacular wine country. For an educational day out, learn about New Zealand's native species at Zealandia, the world's first fully-fenced eco-sanctuary and home to over 40 types of endangered and native birds.

Zealandia By Night Wildlife Sanctuary Tour

Taking a night tour of Zealandia wildlife eco-sanctuary is an unforgettable experience and one that comes highly recommended. A conservation success and safe haven for some of New Zealand's rarest native animals, Zealandia is home to many remarkable species of birds, reptiles and insects living wild within a beautiful 225 hectare (one square mile) valley, just 10 minutes from the central city.

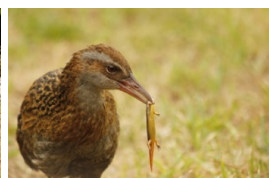
Your accommodation: Ohtel Wellington

Ohtel is adjacent to Wellington's principal entertainment precinct. Major attractions such as Te Papa, Oriental Bay beach, theatres, restaurants & clubs, are a stone's throw away. Beyond, the city hub creates a picturesque night-time back-drop.

Meals included: Breakfast



Day 12



Kapiti Classic Guided Day Tour with Kapiti Island Nature Tours - Lunch Included

Your day trip to Kapiti Island begins at Paraparaumu where you'll catch the short ferry ride over to Waiorua Bay at the northern end of Kapiti Island. On arrival you'll be welcomed to the island and your experienced nature guide will introduce you to the natural and human history of the island. You'll discover for yourself the remarkable bird life that exists on this predator free island when you're guided on a 1 hour nature walk. A delicious cooked lunch is also provided at the lodge on the island.

Your accommodation: Ohtel Wellington

Ohtel is adjacent to Wellington's principal entertainment precinct. Major attractions such as Te Papa, Oriental Bay beach, theatres, restaurants & clubs, are a stone's throw away. Beyond, the city hub creates a picturesque night-time back-drop.

Meals included: Breakfast, Lunch



Day 13



Depart Wellington today

Choose to explore more of Wellington's sights before dropping your rental car at the airport depot and continuing your onward journey.

Farewell from Aotearoa / New Zealand

Bid farewell to Aotearoa / New Zealand, taking with you unforgettable memories of its breathtaking landscapes and incredible adventures. In Māori, it is said mā te wā, which is not goodbye, it is see you soon!

Tour details

Departures:	Daily
Tour type:	Self Drive Tour (FTNZ ONLY)
Starts:	Auckland
Finishes:	Wellington
Tour length:	13
Accommodation:	Boutique Lodges & Hotels
Car/transport type:	

Accommodation summary

Day 1	Abstract Hotel & Residences
Day 2	Abstract Hotel & Residences
Day 3	The Sands Hotel & Resort Hokianga
Day 4	The Sands Hotel & Resort Hokianga
Day 5	Tarltons Lodge
Day 6	Tarltons Lodge
Day 7	Woodhouse Mountain Lodge Warkworth
Day 8	Regent of Rotorua
Day 9	Regent of Rotorua
Day 10	Art Deco Masonic Hotel
Day 11	Ohtel Wellington
Day 12	Ohtel Wellington