

New Zealand Luxury Lodge Escape

Discover the height of indulgence with a luxury holiday that takes you to New Zealand's most exclusive lodges, seamlessly connected by helicopter transfers. Begin your journey in Auckland at the stylish Hotel Britomart, then fly north to the renowned Rosewood Kauri Cliffs, where oceanfront beauty meets refined relaxation. Continue to the serene Solitaire Lodge, nestled on the shores of Lake Tarawera, before heading to the dramatic coastline of Wharekauhau Country Estate overlooking Palliser Bay. Explore the alpine wilderness at Flockhill Lodge in the heart of the Southern Alps, and bask in the tranquillity of The Lindis, tucked away in the remote Ahuriri Valley. Next, enjoy the perfect blend of adventure and luxury at Blanket Bay on Lake Wakatipu, followed by the grandeur of Mt. Cook Lakeside Retreat with its stunning views of Aoraki/Mt. Cook. End your journey in Canterbury's countryside at the historic and elegant Otahuna Lodge. Each stop offers unparalleled experiences, from heli-hiking and private spa treatments to world-class cuisine, showcasing the very best of New Zealand's landscapes and hospitality.

Starts in: Auckland
 Finishes in: Christchurch
 Length: 23days / 22nights
 Accommodation: Luxury Lodges
 Can be customised: Yes

This itinerary can be customised to suit you perfectly. We can add more days, remove days, change accommodations, mix it up, add activities to suit your interests or simply design and create something from scratch. Call us today to get your custom New Zealand itinerary underway.



Inclusions:

Includes: All coach transport
 Includes: Afterhours emergency support while touring
 Included activity: Private Transfer Auckland Airport to your Auckland Accommodation with Tourcorp
 Included activity: Private Heli transfer from Wharekauhau Country Estate to Flockhill Lodge with GCH Aviation
 Included activity: Private Heli transfer from Flockhill Lodge to The Lindis with Heletranz
 Included activity: Fiordland's Finest Combo FLY - CRUISE - HELI with The Helicopter Line
 Included activity: Mt Cook Retreat Wine Cellar and Stargazing
 Included activity: Lavish West Coast Cuisine Adventure with Mackenzie Helicopters (Private Charter)
 plus much more...

Includes: All pick ups/drop offs at destinations
 Included activity: Electronic Travel Guide and In-Country Support App
 Included activity: The Visitor Promise - Cultural Learning Course
 Included activity: Adventure Experiences at Flock Hill
 Included activity: Private Heli Transfer from The Lindis to Blanket Bay Lodge with Glacier Southern Lakes Helicopters
 Included activity: Private Heli transfer from Blanket Bay Lodge to Mount Cook Retreat with Heletranz
 Included activity: Waiheke Island Luxury Private Tour with Auckland & Beyond Tours - Lunch Included
 Included activity: Private Heli transfer from Mount Cook Retreat to Otahuna Lodge with GCH Aviation

Day 1



Private Transfer Auckland Airport to your Auckland Accommodation with Tourcorp

You will be met at the Auckland airport by the driver and transferred to your Auckland accommodation.

Welcome to Auckland

Welcome to Auckland, known in Māori as Tāmaki Makaurau. Auckland is New Zealand's vibrant "City of Sails," and the country's largest metropolitan area. Nestled between the Pacific Ocean and the Tasman Sea. Surrounded by native bush, lush rainforests, and pristine beaches, Auckland is a haven for both adventurers and urban explorers. Wander through world-class museums and galleries in the city centre or enjoy a peaceful retreat at the Auckland Gardens, where stunning landscapes showcase New Zealand's diverse flora. Stroll along the lively waterfront to savour fresh seafood and international cuisine at Viaduct restaurants. For an unforgettable perspective, ascend the iconic SkyTower, New Zealand's tallest structure, and take in panoramic views of the city and its picturesque islands.

SUGGESTED ACTIVITY - When in Auckland with Aucky Walky Tour

Explore the City by foot with a 3-hour walking tour around Auckland also known as the 'City of Sails'. Your local guide will ensure that you get the history of Auckland along with discovering the hidden treasures that the City has to offer. Throughout your tour, you will be shown around the City hotspots, taken down hidden lanes, past street art, pointed out the best spots to eat, and learn firsthand the best parts of Auckland. During your walk you will stop by a local cafe for a refreshing bite to eat, and the chance to meet and mingle with the locals of the town.

Your accommodation: The Hotel Britomart Auckland

Soulful, smart and contemporary, The Hotel Britomart welcomes guests to Britomart, the vibrant centre of downtown waterfront Auckland. Still and calm, the rooms and suites at The Hotel Britomart pair simple elegance with the luxury of tactile materials. The Hotel Britomart is at the centre of a dynamic nine-block precinct of plant-lined streets, historic warehouses and the city's best shopping and eating.

Meals included: Speciality Dinner



Day 2



Waiheke Island Luxury Private Tour with Auckland & Beyond Tours - Lunch Included

Explore the famous Waiheke Island, known for its rolling vineyards, sandy beaches, rocky bays, and glorious wineries. Meet your guide in Auckland as you board the ferry to head out to the island, cruising along the Hauraki Gulf to reach the Matakia Bay terminal. On the Island, your guide will tour you around in a luxury vehicle, as you indulge in wine tasting and a vineyard tour from three premium wineries, before enjoying a picnic lunch at one of the gorgeous white sandy beaches. After lunch you will get to explore an award-winning Olive Oil estate, here you will get the chance to view the trees and the process of how the Oil is harvested and made. After your tour, you will board the ferry and head back to Auckland.

Your accommodation: The Hotel Britomart Auckland

Soulful, smart and contemporary, The Hotel Britomart welcomes guests to Britomart, the vibrant centre of downtown waterfront Auckland. Still and calm, the rooms and suites at The Hotel Britomart pair simple elegance with the luxury of tactile materials. The Hotel Britomart is at the centre of a dynamic nine-block precinct of plant-lined streets, historic warehouses and the city's best shopping and eating.

Meals included: Breakfast, Lunch



Day 3



Private Transfer Auckland accommodation to Auckland North Shore Airport with Tourcorp

You will be met at your Auckland accommodation and be transferred to the Auckland North Shore Airport.

Private Heli transfer from Auckland to Rosewood Kauri Cliffs with Heletranz

Private transfer from Auckland to the Bay of Islands. Enjoy a scenic helicopter ride as you make your way to your luxury stay at Rosewood Kauri Cliffs, in the Bay of Islands.

Rosewood Kauri Cliffs Lodge Dining

At Rosewood Kauri Cliffs, dining is an experience of refined flavours and unforgettable settings. The lodge's chefs craft menus inspired by New Zealand's rich culinary traditions, using locally sourced ingredients and fresh produce from the on-site gardens. Guests are treated to a variety of dining options, from breakfasts with sweeping ocean vistas to beautifully curated evening meals in the elegant dining room. Each dish is thoughtfully paired with wines from New Zealand's renowned vineyards, ensuring a harmonious balance of taste and sophistication. Dining at Kauri Cliffs is more than a meal, it's an immersion into the tastes and textures of the region.

Your accommodation: Rosewood Kauri Cliffs

Set on 6,000 acres near Matauri Bay, Northland, The Lodge at Kauri Cliffs affords spectacular 180-degree views of the Pacific Ocean. Cape Brett and the offshore Cavalli Islands are part of the panorama which can be viewed from the verandas, lounge, and dining rooms. A championship golf course also graces the lodge.

Meals included: Breakfast, Dinner



Day 4



Rosewood Kauri Cliffs Lodge Experience

Located on 6,000 spectacular acres near Matauri Bay, Northland, Rosewood Kauri Cliffs is a secluded oasis. With panoramic views of the Pacific Ocean, Cape Brett and the Cavalli Islands, guests stay in one of 22 cottage suites, each with their own private porch and open fireplace. While best known for its world-class golf course, Rosewood Kauri Cliffs has many other activities on offer including horseback riding, cycling, swimming, sailing, a guided farm tour, and access to its day spa - nestled within native Totara forest. Discover New Zealand's pristine shores on one of three private beaches or fish and dive in the clear blue waters.

Ranked the number one hotel in the world in 2014 by Conde Nast, Rosewood Kauri Cliffs is also home to two astroturf tennis courts, an infinity swimming pool, spa and fully equipped fitness centre. Five-star gourmet a la carte dining is available both indoors and on the veranda outside, as well as informal barbecues and lunch hampers.

Your accommodation: Rosewood Kauri Cliffs

Set on 6,000 acres near Matauri Bay, Northland, The Lodge at Kauri Cliffs affords spectacular 180-degree views of the Pacific Ocean. Cape Brett and the offshore Cavalli Islands are part of the panorama which can be viewed from the verandas, lounge, and dining rooms. A championship golf course also graces the lodge.

Meals included: Breakfast, Dinner



Day 5



Private Heli Transfer from Rosewood Kauri Cliffs to Solitaire Lodge with Volcanic Air

Enjoy a scenic helicopter journey as you depart Rosewood Kauri Cliffs and head to Solitaire Lodge in Rotorua.

Solitaire Lodge Dining

Renowned for its fine dining, Solitaire Lodge serves five-star modern New Zealand cuisine using seasonal local meat and produce - complemented by superb wines from selected vineyards. Engage in lively conversation with fellow guests in the lodge's dining room, or choose an intimate dinner for two in your suite. Dining outside is also popular under the umbrella-adorned wooden tables.

Your accommodation: Solitaire Lodge

Solitaire Lodge Rotorua, one of New Zealand's premier luxury lodges, enjoys breathtaking views over Lake Tarawera, with lush natural bush and volcanic landscape backdrop. The subtle design brings the outdoors in, inviting you to unwind and soak up the peace and quiet of this tranquil setting. Minutes from this iconic resort you will discover a multitude of activities.

Meals included: Breakfast, Dinner



Day 6



Solitaire Lodge

Nestled on the shores of Lake Tarawera, Solitaire Lodge offers guests the ideal blend of indulgence and adventure from a picture-perfect setting. Luxurious and elegantly appointed with floor-to-ceiling windows and stunning panoramic views across the lake, guests can choose to relax in front of an open fire with a book from the library, enjoy the bar facilities or take a stroll in the expansive herb garden. Nearby is the Lodge's private jetty with complimentary use of the lodge's kayaks, motorised dinghies and trout fishing gear.

Each of the suites is styled for comfort and features panoramic views of the lake and volcano. Bringing the outdoors in, you are invited to unwind and soak up the peace and quiet of this tranquil setting.

Your accommodation: Solitaire Lodge

Solitaire Lodge Rotorua, one of New Zealand's premier luxury lodges, enjoys breathtaking views over Lake Tarawera, with lush natural bush and volcanic landscape backdrop. The subtle design brings the outdoors in, inviting you to unwind and soak up the peace and quiet of this tranquil setting. Minutes from this iconic resort you will discover a multitude of activities.

Meals included: Breakfast, Dinner



Day 7



Solitaire Lodge Tarawera Thermal Springs

Moments from the Lodge you will discover the essence of unspoiled Lake Tarawera. Take a 15 minute private launch excursion to the natural hot springs of Lake Tarawera. Best accessed pre-breakfast, enjoy soaking in thermal waters rising gently through the lake bed as the morning sun filters through native bush.

Kahukiwi Experiences 4WD Guided Culture Tour

Based in the sacred Te Takinga Marae in Rotorua, Kahukiwi Experiences offers a never before seen window into the landscapes, ways of life and heritage of the Ngāti Pikiao tribe. Explore the untouched, sacred land of the Ngāti Pikiao tribe in this intimate 4WD experience. Guided by a local and highly knowledgeable Māori guide, you'll explore a stunning marae (a communal and social gathering place), landscapes and never-before-seen views that look over Rotorua's lake district. En route, you'll learn the myths and legends of local people, rich history and fascinating ways of life.

Your accommodation: Solitaire Lodge

Solitaire Lodge Rotorua, one of New Zealand's premier luxury lodges, enjoys breathtaking views over Lake Tarawera, with lush natural bush and volcanic landscape backdrop. The subtle design brings the outdoors in, inviting you to unwind and soak up the peace and quiet of this tranquil setting. Minutes from this iconic resort you will discover a multitude of activities.

Meals included: Breakfast, Dinner



Day 8



Private Heli Transfer from Solitaire Lodge to Wharekauhau Country Estate with Volcanic Air

Enjoy a scenic helicopter journey as you depart Solitaire Lodge in Rotorua and head to Wharekauhau Country Estate.

Wharekauhau Country Estate Dining

The philosophy at Wharekauhau is simple… everything is based on what you, their guest, would like. Being a small property means they can tailor each guest's wishes to create a memorable dining experience. Wharekauhau's dinner menu changes to reflect the seasons and features contemporary twists on New Zealand classics such as Beef, Crayfish, Duck and of course the famous Texel Lamb. With Martinborough at their front doorstep and Marlborough just a stone's throw away, the Wharekauhau cellar is nothing short of an outstanding selection of local wine and craft beer. Dining at Wharekauhau resembles a private dinner party, with guests seated at grand tables. However, any guests who prefer a more secluded and intimate setting for their meals are welcome to request a private dining table.

Your accommodation: Wharekauhau Country Estate

Wharekauhau's Luxury Cottage Suites are a picture of grandeur. Perched high above the thunderous surf of the Palliser Bay, you will be treated to dramatic vistas. Be at one with nature amongst the sheep that dot the pastures and enjoy deep sofas, fluffy pillows and homemade cookies - Just a few of the luxuries you will experience during your stay.

Meals included: Breakfast, Dinner



Day 9



Explore Wharekauhau Country Estate

As you wander into the grand lodge, what catches the eye is the awe-inspiring view over Palliser Bay, framed perfectly from every vantage point. Each room in the main lodge has a different feel, from large open lounges to smaller and more intimate areas such as the Palliser Room or Drawing Room. The antique furniture and over-sized fireplaces throughout the lodge capture the grandeur of yesteryear. Slide into an inviting sofa or armchair; take a moment to relax by conversing with fellow guests, or escaping into a good book. The lodge sits on an exclusive 5,500-acre private domain of forests, lakes, and rugged coastline, providing endless possibilities for walking, mountain biking, or private beach surfcasting. The Recreation Centre features a heated 24 metre pool, gymnasium, tennis court, and spa room, all adjacent to the sun-soaked courtyard and croquet lawn, the ideal setting to savour a local wine.

Your accommodation: Wharekauhau Country Estate

Wharekauhau's Luxury Cottage Suites are a picture of grandeur. Perched high above the thunderous surf of the Palliser Bay, you will be treated to dramatic vistas. Be at one with nature amongst the sheep that dot the pastures and enjoy deep sofas, fluffy pillows and homemade cookies - Just a few of the luxuries you will experience during your stay.

Meals included: Breakfast, Dinner



Day 10



Private Heli transfer from Wharekauhau Country Estate to Flockhill Lodge with GCH Aviation

Enjoy a private helicopter transfer from Wharekauhau Country Estate to Flockhill Lodge.

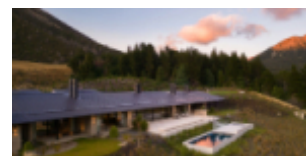
Flockhill Luxury Stay

Step into 36,000 acres of stunning alpine landscape and discover luxury adventure vacations in New Zealand's Southern Alps. The new Flock Hill offers an inspiring blend of exploration and harmony with nature. With pristine lakes, hidden caves, sweeping tussock fields, and towering mountains, Flock Hill is one of the most breathtaking destinations for adventure seekers. Create unforgettable memories with custom-designed activities, savor exceptional dining, and feel connected each morning as you step out into the expansive surroundings.

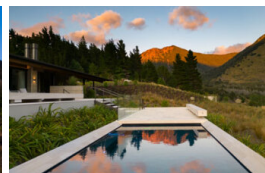
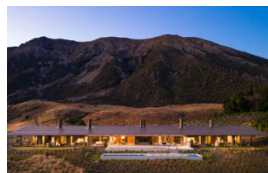
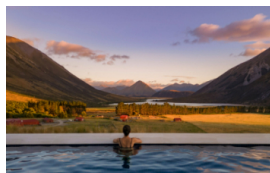
Your accommodation: Flockhill - Villas

Adventurous spirits with a sophisticated palate are invited to indulge in the Flockhill experience. Nestled within the expansive station, Flockhill's Alpine Lodge stands as a tranquil observer of life in the breathtaking Southern Alps.

Meals included: Breakfast, Dinner



Day 11



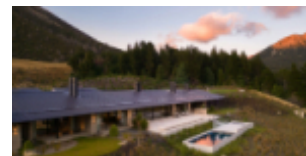
Flockhill Luxury Stay

Set in an exclusive wilderness where nothing is manufactured, Flockhill inspires adventure and exploration. Activities arranged by the lodge offer a unique taste of Flockhill, shared in an intimate setting with fellow guests. You might embark on a scenic journey into the station's remote backcountry, gaining an appreciation for New Zealand's legendary farming heritage. Spend time with the animals, learn the art of dog-whistling, and watch as skilled dogs muster a flock of sheep. Alternatively, you might hop on an e-bike to explore the Lake Track, visit Lake Pearson, or set out on a scenic hike.

Your accommodation: Flockhill - Villas

Adventurous spirits with a sophisticated palate are invited to indulge in the Flockhill experience. Nestled within the expansive station, Flockhill's Alpine Lodge stands as a tranquil observer of life in the breathtaking Southern Alps.

Meals included: Breakfast, Lunch, Dinner



Day 12



Adventure Experiences at Flock Hill

Surrender to the wilderness and discover something new today. Flock Hill offers a wide range of curated activities across the station, from horseback riding and rock climbing to biking, ATV tours, fly fishing, and more. Each activity provides a unique opportunity to experience the rugged beauty of Canterbury and the Southern Alps.

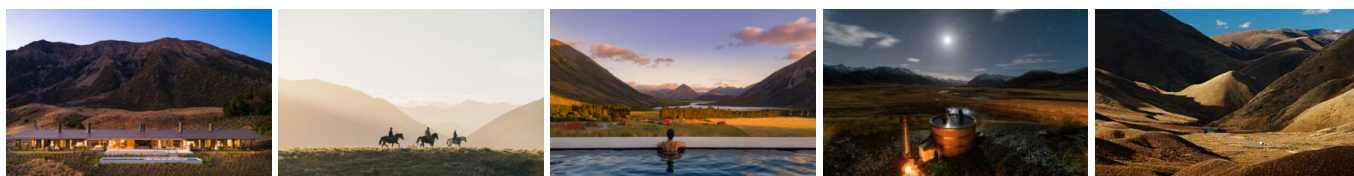
Your accommodation: Flockhill - Villas

Adventurous spirits with a sophisticated palate are invited to indulge in the Flockhill experience. Nestled within the expansive station, Flockhill's Alpine Lodge stands as a tranquil observer of life in the breathtaking Southern Alps.

Meals included: Breakfast, Lunch, Dinner



Day 13



Private Heli transfer from The Lindis to Flockhill Lodge with Heletranz

Private helicopter transfer from Flockhill Lodge to The Lindis.

The Lindis Dining

At The Lindis, dining is a harmonious blend of exceptional cuisine and breathtaking scenery. The lodge's chefs create exquisite dishes using the finest locally sourced, seasonal ingredients, crafting menus that highlight the vibrant flavours of New Zealand. From leisurely breakfasts to indulgent multi-course dinners, each meal is thoughtfully paired with premium New Zealand wines for a truly immersive culinary experience. Set within the stunning Ahuriri Valley, the dining spaces offer panoramic views that enhance every bite, whether you're savouring a meal in the elegant dining room or a private setting.

Your accommodation: The Lindis

Near the bottom of the habitable world is the breathtaking and pristine Ahuriri Valley. Carved over millions of years by the once fierce glacial waters of the Ahuriri River, the valley is now a tranquil, yet comfortingly rugged slice of paradise in New Zealand's South. And resting almost imperceptibly on the valley floor is The Lindis, a truly unique luxury lodge.

Meals included: Breakfast, Dinner



Day 14



The Lindis

Nestled in the heart of New Zealand's pristine Ahuriri Valley, The Lindis Lodge is a luxurious retreat that offers an unparalleled connection to nature. Designed to blend seamlessly with its surroundings, the lodge's striking architecture mirrors the contours of the valley, creating a sense of harmony and serenity. Guests are treated to breathtaking views of the surrounding mountains, rivers, and rolling hills from every corner of the property. The Lindis Lodge provides an intimate and exclusive experience, with elegantly appointed suites that feature contemporary design, natural materials, and floor-to-ceiling windows. Activities abound, from fly fishing in the crystal-clear waters of the Ahuriri River and horse trekking across the high-country landscapes, to hiking and mountain biking through the rugged terrain. For those seeking tranquility, the lodge offers relaxation spaces and indulgent fine dining, where locally sourced ingredients are transformed into exquisite dishes paired with premium New Zealand wines.

Your accommodation: The Lindis

Near the bottom of the habitable world is the breathtaking and pristine Ahuriri Valley. Carved over millions of years by the once fierce glacial waters of the Ahuriri River, the valley is now a tranquil, yet comfortably rugged slice of paradise in New Zealand's South. And resting almost imperceptibly on the valley floor is The Lindis, a truly unique luxury lodge.

Meals included: Breakfast, Lunch, Dinner



Day 15



Private Heli Transfer from The Lindis to Blanket Bay Lodge with Glacier Southern Lakes Helicopters

On this private scenic helicopter flight, you will be transferred from The Lindis to Blanket Bay Lodge.

Blanket Bay Dining

Blanket Bay has a commitment to nurturing the creativity and skills of young chefs and this has been rewarded with a string of awards for the Blanket Bay chefs over the years. Current Executive Chef Corey Hume is deeply passionate about his craft, he also champions distinctly New Zealand cuisine. "I love the possibilities that the joy of food can bring to people in their daily lives", states Corey. Blanket Bay features the best of New Zealand's vineyards and is especially proud to offer award-winning Pinot Noirs, Chardonnays, Sauvignon Blancs, and Rieslings grown and bottled in nearby Central Otago. Dinner is served in the elegant Lake View Dining Room with its beamed ceiling and stone fireplace. For a more intimate affair, reserve our Wine Cave – a perfect venue for private dining for up to six people. On warmer evenings, under a clear southern sky, The Terrace is a magnificent setting with the fire behind and the mountain and lake vistas unfolding around you.

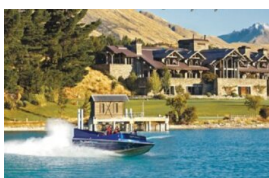
Your accommodation: Blanket Bay

The Lodge at Blanket Bay sits right on the edge of Lake Wakatipu amongst extensive grounds. One of New Zealand's finest lodges it is built in the style of an alpine lodge and finished with native New Zealand timber and stone. Just 30 minutes from Queenstown this exclusive lodge is a sanctuary.

Meals included: Breakfast, Dinner



Day 16



Blanket Bay

Nestled amidst rugged snow-capped peaks of the Southern Alps on the shores of Lake Wakatipu is New Zealand's finest Lodge – Blanket Bay. In this spectacular corner of New Zealand discover endless ways to restore your physical and spiritual well-being. There is nowhere else on Earth where there are so many activities so close by – fly-fishing and heli-skiing, the country's best hiking on the Routeburn or Milford Tracks, jet boating and kayaking, 4WD tours, horse riding, art trails and vineyards, plus flight-seeing over the World Heritage Fiordland National Park and Milford Sound. And let's not forget the numerous international standard golf courses around Queenstown. Activities available from Blanket Bay (enquire for pricing):

At Blanket Bay, guests can immerse themselves in a variety of outdoor adventures set against some of New Zealand's most breathtaking landscapes. Experience a magical horseback ride on Wyuna Station, where riders of all levels can explore the stunning high-country terrain. Take to the skies on a private two-hour scenic helicopter tour of Milford Sound and Fiordland, departing from the lodge's lawns to reveal glaciers, coastal fiords, and majestic Mt. Tutoko. For those who enjoy exploring on foot, the area offers incredible hiking and scenic walks, with options to be guided through remote gems like The Paradise or Routeburn Valleys. Fly fishing enthusiasts can cast their line in nearby rivers, streams, or the lake edge, with guided fishing and gear hire available for a chance to reel in impressive trout. Adventures at Blanket Bay promise unforgettable experiences in every direction.

Your accommodation: Blanket Bay

The Lodge at Blanket Bay sits right on the edge of Lake Wakatipu amongst extensive grounds. One of New Zealand's finest lodges it is built in the style of an alpine lodge and finished with native New Zealand timber and stone. Just 30 minutes from Queenstown this exclusive lodge is a sanctuary.

Meals included: Breakfast, Dinner



Day 17



Fiordland's Finest Combo FLY - CRUISE - HELI with The Helicopter Line

Experience Milford Sound / Piopiotahi by taking to the skies in two different types of aircraft: one way by fixed-wing plane and the other by helicopter. This adventure includes a stunning 2-hour cruise and is a bucket list experience not to be missed! It is important to read and understand the risks associated with this activity. A full risk disclosure can be found [here](#).

Your accommodation: Blanket Bay

The Lodge at Blanket Bay sits right on the edge of Lake Wakatipu amongst extensive grounds. One of New Zealand's finest lodges it is built in the style of an alpine lodge and finished with native New Zealand timber and stone. Just 30 minutes from Queenstown this exclusive lodge is a sanctuary.

Meals included: Breakfast, Dinner



Day 18



Private Heli transfer from Blanket Bay Lodge to Mount Cook Retreat with Heletranz

You will be transferred on a private helicopter from Blanket Bay Lodge to Mount Cook Lake Side Retreat.

Mt Cook Lakeside Retreat Dining

Dining at Mt. Cook Lakeside Retreat is a culinary journey that combines exceptional flavors with breathtaking views of the Southern Alps and Lake Pukaki. The retreat's chefs craft gourmet dishes inspired by fresh, locally sourced ingredients, celebrating the best of New Zealand's produce. Each meal is thoughtfully prepared, offering a perfect balance of creativity and authenticity. Guests can savor their dining experience in the elegant Pukaki Observatory, under a canopy of stars, or in the comfort of their private villa. Paired with a selection of fine New Zealand wines, dining at Mt. Cook Lakeside Retreat is as memorable as its stunning surroundings.

Mt Cook Retreat Wine Cellar and Stargazing

Located in the heart of the Aoraki Mackenzie International Dark Sky Reserve, with no light pollution. Join your guide in the underground wine cellar for a wine and whisky experience and then move through to Pukaki Observatory for an observing and astrophotography tour of the night sky through the 6 inch refractor telescope.

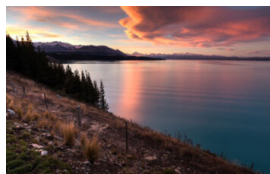
Your accommodation: Mt Cook Lakeside Retreat

Mt Cook Lakeside Retreat offers exclusive accommodation, set on the shores of Lake Pukaki overlooking Mt Cook National Park. After a day of exploring relax in your private peaceful outdoor spa pool.

Meals included: Breakfast, Dinner



Day 19



Mt Cook Lakeside Retreat

Mt. Cook Lakeside Retreat is a secluded haven of luxury set on the tranquil shores of Lake Pukaki, offering breathtaking views of Aoraki/Mt. Cook and the Southern Alps. Nestled within a pristine alpine landscape, the retreat provides an exclusive escape where privacy, elegance, and nature converge. Guests can unwind in beautifully appointed villas featuring spacious living areas, private hot tubs, and expansive windows that frame the stunning scenery. The retreat offers a range of tailored experiences, from stargazing in the Pukaki Observatory to exploring nearby hiking trails, fly fishing, and indulging in spa treatments. Its gourmet dining celebrates local flavours, with meals crafted from fresh, seasonal ingredients and paired with fine New Zealand wines. Whether for relaxation or adventure, Mt. Cook Lakeside Retreat is a place to reconnect with nature and experience the finest in alpine luxury.

Your accommodation: Mt Cook Lakeside Retreat

Mt Cook Lakeside Retreat offers exclusive accommodation, set on the shores of Lake Pukaki overlooking Mt Cook National Park. After a day of exploring relax in your private peaceful outdoor spa pool.

Meals included: Breakfast, Dinner



Day 20



Lavish West Coast Cuisine Adventure with Mackenzie Helicopters (Private Charter)

Climb on board your own private helicopter and fly over New Zealand largest glaciers and tallest peaks with your experienced pilot. Get up close to New Zealand's highest mountain, Aoraki and explore the ancient blue ice of the glaciers. Once you've flown over the mighty Alps you will discover the magic of the West Coast landscape, snow capped mountains descend into lush green coastal rainforests as you come into land on a secluded West Coast beach. Sip drinks beside your own private bonfire as your pilot dons a wetsuit and catches fresh crayfish straight from the sea. Climb back onboard for another exhilarating scenic flight before your own private dining experience high in the alpine with freshly caught crayfish.

Your accommodation: Mt Cook Lakeside Retreat

Mt Cook Lakeside Retreat offers exclusive accommodation, set on the shores of Lake Pukaki overlooking Mt Cook National Park. After a day of exploring relax in your private peaceful outdoor spa pool.

Meals included: Breakfast, Dinner



Day 21



Private Heli transfer from Mount Cook Retreat to Otahuna Lodge with GCH Aviation

Enjoy a private helicopter transfer from Mount Cook Retreat to Otahuna Lodge.

Otahuna Lodge Dining

The cuisine celebrates the best of seasonal New Zealand produce, with an emphasis on fresh Otahuna estate-grown offerings. Dinner is a five-course chef's degustation menu which changes daily, making use of the fresh produce sourced from the property's potager garden and orchard. Honest, uncluttered flavours, the finest local ingredients and elegantly restrained presentation are the hallmarks of the Otahuna table. At dinner, guests dine communally in the opulent formal dining room - ornate original wallpaper, a roaring fire and sparkling candlesticks exemplify the gracious living of the Victorian era. Alternatively, they may retreat to a private table for two in the sunken wine cellar, the intimate library, the drawing room turret, or a location of their choosing.

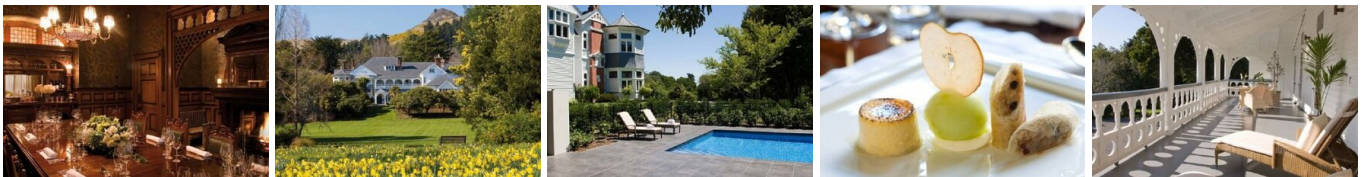
Your accommodation: Otahuna Lodge

Otahuna Lodge is an exclusive country estate. Each suite retains architectural features from the 19th century such as ornate original fireplaces, carved inglenooks and stained glass windows. All luxury suites offer super-king beds, fine custom-made linens, toiletries by Penhaligons of London, deep bathtubs and separate rain showers.

Meals included: Breakfast, Dinner



Day 22



Otahuna Lodge

Otahuna Lodge is a beguiling Victorian mansion that offers its guests a unique sense of wonder and discovery. New Zealand's largest private historic residence has been revitalized with luxury accommodation, glorious gardens and sophisticated cuisine. The spectacular 118-year-old gardens of Otahuna were laid out and cultivated under the direction of A. E. Lowe who trained at Kew Gardens, London. Wide vistas over the lawn and lake contrast beautifully with intimate walks which wind through heavily wooded areas. The gardens of the country estate offer a range of guest amenities and activities including swimming, tennis, croquet and petanque among others. Activities – for current pricing please enquire at the Lodge – At Otahuna Lodge, guests can indulge in a variety of activities that highlight the region's charm and the lodge's exceptional offerings. Join Executive Chef Jimmy McIntyre for a hands-on, three-hour cooking class, where you'll explore the philosophies behind the Lodge's renowned cuisine, spend time in the organic potager garden, and learn expert techniques in the kitchen. For relaxation, enjoy a 60 or 90-minute massage in the tranquil setting of the estate's historic laundry buildings. Adventure seekers can try their hand at fly fishing with the guidance of a local expert, targeting brown and rainbow trout or Chinook salmon during the fishing season. Horseback riding excursions, tailored to all experience levels, are available nearby with private guides, while hiking and biking trails showcase Canterbury's diverse landscapes. Guests can also take advantage of complimentary bicycles to explore the scenic 6-kilometre loop around the Otahuna Valley.

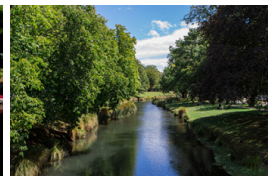
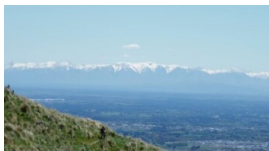
Your accommodation: Otahuna Lodge

Otahuna Lodge is an exclusive country estate. Each suite retains architectural features from the 19th century such as ornate original fireplaces, carved inglenooks and stained glass windows. All luxury suites offer super-king beds, fine custom-made linens, toiletries by Penhaligons of London, deep bathtubs and separate rain showers.

Meals included: Breakfast, Dinner



Day 23



Private transfer Otahuna Lodge to Christchurch Airport

A private transfer will collect you from your accommodation and transfer you to Christchurch Airport in time for your departing flight.

Farewell from Aotearoa / New Zealand

Bid farewell to Aotearoa / New Zealand, taking with you unforgettable memories of its breathtaking landscapes and incredible adventures. In Māori, it is said mā te wā, which is not goodbye, it is see you soon!

Tour details

Departures:	Daily
Tour type:	
Starts:	Auckland
Finishes:	Christchurch
Tour length:	23
Accommodation:	Luxury Lodges
Car/transport type:	

Accommodation summary

Day 1	The Hotel Britomart Auckland
Day 2	The Hotel Britomart Auckland
Day 3	Rosewood Kauri Cliffs
Day 4	Rosewood Kauri Cliffs
Day 5	Solitaire Lodge
Day 6	Solitaire Lodge
Day 7	Solitaire Lodge
Day 8	Wharekauhau Country Estate
Day 9	Wharekauhau Country Estate
Day 10	Flockhill - Villas
Day 11	Flockhill - Villas
Day 12	Flockhill - Villas
Day 13	The Lindis
Day 14	The Lindis
Day 15	Blanket Bay
Day 16	Blanket Bay
Day 17	Blanket Bay
Day 18	Mt Cook Lakeside Retreat
Day 19	Mt Cook Lakeside Retreat
Day 20	Mt Cook Lakeside Retreat
Day 21	Otahuna Lodge
Day 22	Otahuna Lodge