



South Island Farm and Rural Escape

This journey showcases the absolute best farm stays and luxury lodges of New Zealand, offering an unforgettable experience in some of Aotearoa's most spectacular settings. Settle into world-class New Zealand resorts, including a stay at the breathtaking Flockhill, and be pampered with exceptional service and gourmet dining. Travel is seamless, safe, and comfortable from the moment you arrive. As a fully customizable itinerary, this trip is designed for the discerning traveller who values privacy, comfort, and the freedom to explore at their own pace.



Starts in: Christchurch
Finishes in: Queenstown
Length: 16days / 15nights
Accommodation: Farm Stay
Can be customised: Yes

This itinerary can be customised to suit you perfectly. We can add more days, remove days, change accommodations, mix it up, add activities to suit your interests or simply design and create something from scratch. Call us today to get your custom New Zealand itinerary underway.



Inclusions:

Includes: Late model rental cars

Includes: Unlimited kms

Included activity: Private Transfer Wellington Hotel to Airport with In Style Executive

Included activity: The Visitor Promise - Cultural Learning Course

Included activity: Private transfer accommodation to airport to collect rental car

Included activity: Scenic Helicopter Transfer - Wanaka to Minaret Station Lodge

Included activity: Sunrise Balloon Adventures

Included activity: Helicopter Transfer from Wellington to Middlehurst Station

Included activity: Rural Experience with Middlehurst Station

Included activity: Private Transfer to Kaikoura Accommodation

Included activity: Helicopter Transfer from Kaikoura to Flockhill

Included activity: Private Transfer from Flockhill to Arthurs Pass

plus much more...

Includes: Fully inclusive rental car insurance (excess may apply)

Includes: Afterhours emergency support while touring

Included activity: Electronic Travel Guide and In-Country Support App

Included activity: Mt Cook Lakeside Retreat - Dusk to Dark Stargazing

Included activity: Glacier Lake Sea-Kayaking

Included activity: Scenic Helicopter Transfer - Minaret Station Lodge to Wanaka

Included activity: Half Day Gibbston Wine Tour with Black NZ

Included activity: Woodfired hot tub with Middlehurst Station

Included activity: Experience Middlehurst Station

Included activity: Helicopter Transfer from Middlehurst Station to Kaikoura

Included activity: Adventure Experiences at Flock Hill

Included activity: TranzAlpine Scenic Train: Arthurs Pass to Christchurch Scenic Plus with Great Journeys NZ



Day 1



Private Transfer Wellington Hotel to Airport with In Style Executive

You will be collected from your Wellington hotel and transferred to the airport.

Welcome to Wellington

Wellington City is New Zealand's capital. It sits on a wonderful deep natural harbour and is surrounded by bush clad hills. The city centre itself is quite compact (only around 1 square kilometre) and so exploring on foot is relatively easy. From your city centre accommodation you can easily stroll the cafes and restaurants around Courtenay Place and if you arrive early enough New Zealand's national museum, Te Papa, is also close by.

Your accommodation: Movenpick Hotel Wellington

Movenpick Wellington's prime location at the top of the Terrace offers panoramic views over the city and is just a short walk to the Cuba Quarter and many of the capital's famous attractions. The hotel's facilities include an indoor Heated Pool, Cocktail Bar & Sauna.

Meals included: Dinner



Day 2



Helicopter Transfer from Wellington to Middlehurst Station

You will take a scenic helicopter flight from Wellington to Middlehurst Station.

Middlehurst Station

Middlehurst Station is a working sheep station nestled in the heart of New Zealand's South Island, surrounded by rugged hills and vast, open plains. This expansive property offers a genuine taste of rural life, with a backdrop of stunning natural beauty. Visitors can immerse themselves in the traditional farming experience, exploring the land and observing authentic farming practices. Beyond the adventure, Middlehurst Station provides the perfect setting to relax in the serene, open nature space, where the tranquil surroundings and fresh air invite you to unwind and reconnect with the land.

Gondola and Stargazing tour with Skyline Queenstown

On top of the day-to-day operations at Middlehurst Station that you can part of, there is also some room for relaxation. Treat yourself to an unforgettable luxury experience with our woodfired hot tubs. A pristine spring located at the foot of Mt Lookout delivers gravity-fed water to the wood-fired hot tubs just a few meters away from The Quarters lodging. Placed discretely and shielded, they offer privacy and complete relaxation, inviting our guests to luxuriate in the natural mountain mineral water.

Your accommodation: Middlehurst Station

Nestled within the picturesque landscapes of New Zealand, Middlehurst Station is one of the country's few remote High Country stays. Indulge yourself with this immersive retreat where the rhythm of life slows to match the gentle sway of the eucalyptus trees. Experience the beauty of the outback in luxurious comfort, where every sunrise brings the promise of adventure and every sunset whispers tales of tranquility.

Meals included: Breakfast, Dinner



Day 3



Rural Experience with Middlehurst Station

Owned and operated by the Macdonald family, Middlehurst Station covers 16,500 hectares of the upper Awatere Valley, Marlborough, New Zealand. Nestled within sight of Middlehurst's prominent Mt Lookout, and a short walk from the Awatere Valley's braided rivers. The Station supplies fine merino wool to national and international clothing brands such as Ice Breaker and Allbirds. On this tour, you will see inside the Station Woolshed and get an understanding of sheep shearing operations. Merino fleece will be on display to feel, and a shepherd with a team of dogs will give a demonstration of their expertise.

Your accommodation: Middlehurst Station

Nestled within the picturesque landscapes of New Zealand, Middlehurst Station is one of the country's few remote High Country stays. Indulge yourself with this immersive retreat where the rhythm of life slows to match the gentle sway of the eucalyptus trees. Experience the beauty of the outback in luxurious comfort, where every sunrise brings the promise of adventure and every sunset whispers tales of tranquility.

Meals included: Breakfast, Lunch, Dinner



Day 4



Experience Middlehurst Station

Experience a variety of exciting activities that offer both adventure and natural immersion. Hop on an e-bike for a scenic ride through breathtaking landscapes, allowing you to explore the outdoors with ease and excitement. Take part in a hands-on cooking class, where you'll learn to prepare delicious local dishes. For a deeper connection to the land, join a farm tour to discover the inner workings of a working farm. These activities provide a perfect blend of outdoor exploration, culinary delight, and authentic farm experiences, making for an unforgettable journey.

Your accommodation: Middlehurst Station

Nestled within the picturesque landscapes of New Zealand, Middlehurst Station is one of the country's few remote High Country stays. Indulge yourself with this immersive retreat where the rhythm of life slows to match the gentle sway of the eucalyptus trees. Experience the beauty of the outback in luxurious comfort, where every sunrise brings the promise of adventure and every sunset whispers tales of tranquility.

Meals included: Breakfast, Lunch, Dinner



Day 5



Helicopter Transfer from Middlehurst Station to Kaikoura

You'll take a scenic helicopter flight from Middlehurst Station to Kaikoura.

Kaikōura

Kaikōura is a stunning coastal town known for its rich marine life and dramatic scenery. Visit the fur seal colony, take a whale-watching cruise, or swim with playful dusky dolphins. The town is rich with attractions, walking tracks, and activities for every visitor. A walk around the Kaikōura Peninsula is a must, where you can explore tide pools teeming with marine life, observe sea creatures basking on the rocks, and, for bird lovers, spot the impressive native albatross. Just be sure to keep a respectful distance from any sea lions you meet. Highlights like Ohau Point and historic Fyfe House offer insight into the region's wildlife and whaling past. Finish your visit by sampling the fresh local seafood, renowned for having some of the best fish and chips in the country, or by taking a relaxing wander through the tranquil Lavendyl Lavender Farm.

Private Transfer to Kaikoura Accommodation

You will be transferred to your accommodation by Kaikoura Shuttles.

SUGGESTED ACTIVITY - Captains Cabin Experience with Whale Watch Kaikoura

The Captain's Cabin is situated in the wheelhouse alongside the skipper and watchkeeper. This cabin provides guests with exclusive access to the skipper as they go about their duties as well as a dedicated guide for the duration of the tour. There is a maximum of 12 passengers, giving a more intimate, comfortable, and modern setting.

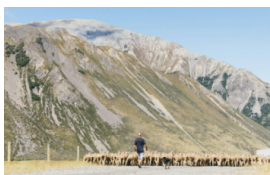
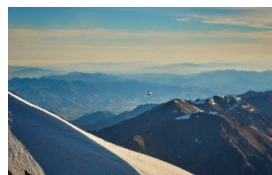
Your accommodation: Hapuku Lodge & Tree Houses

Hapuku Lodge was built to give guests a great night's sleep in one of the most beautiful places in the world. The Lodge sits tight between the mountains and the ocean, on a deer stud and olive farm.

Meals included: Breakfast, Dinner



Day 6



Helicopter Transfer from Kaikoura to Flockhill

You'll take a scenic helicopter flight from Kaikoura to Flockhill.

Flockhill Luxury Stay

Step into 36,000 acres of stunning alpine landscape and discover luxury adventure vacations in New Zealand's Southern Alps. The new Flock Hill offers an inspiring blend of exploration and harmony with nature. With pristine lakes, hidden caves, sweeping tussock fields, and towering mountains, Flock Hill is one of the most breathtaking destinations for adventure seekers. Create unforgettable memories with custom-designed activities, savor exceptional dining, and feel connected each morning as you step out into the expansive surroundings.

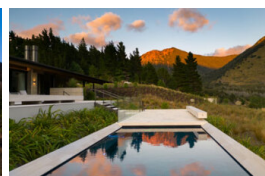
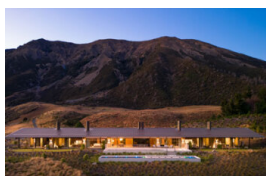
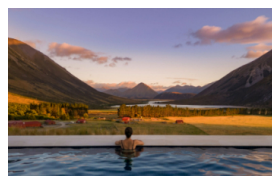
Your accommodation: Flockhill - Villas

Adventurous spirits with a sophisticated palate are invited to indulge in the Flockhill experience. Nestled within the expansive station, Flockhill's Alpine Lodge stands as a tranquil observer of life in the breathtaking Southern Alps.

Meals included: Breakfast, Dinner



Day 7



Flockhill Luxury Stay

Set in an exclusive wilderness where nothing is manufactured, Flockhill inspires adventure and exploration. Activities arranged by the lodge offer a unique taste of Flockhill, shared in an intimate setting with fellow guests. You might embark on a scenic journey into the station's remote backcountry, gaining an appreciation for New Zealand's legendary farming heritage. Spend time with the animals, learn the art of dog-whistling, and watch as skilled dogs muster a flock of sheep. Alternatively, you might hop on an e-bike to explore the Lake Track, visit Lake Pearson, or set out on a scenic hike.

Your accommodation: Flockhill - Villas

Adventurous spirits with a sophisticated palate are invited to indulge in the Flockhill experience. Nestled within the expansive station, Flockhill's Alpine Lodge stands as a tranquil observer of life in the breathtaking Southern Alps.

Meals included: Breakfast, Lunch, Dinner



Day 8



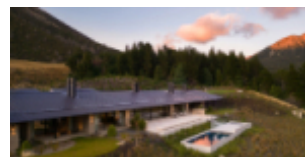
Adventure Experiences at Flock Hill

Surrender to the wilderness and discover something new today. Flock Hill offers a wide range of curated activities across the station, from horseback riding and rock climbing to biking, ATV tours, fly fishing, and more. Each activity provides a unique opportunity to experience the rugged beauty of Canterbury and the Southern Alps.

Your accommodation: Flockhill - Villas

Adventurous spirits with a sophisticated palate are invited to indulge in the Flockhill experience. Nestled within the expansive station, Flockhill's Alpine Lodge stands as a tranquil observer of life in the breathtaking Southern Alps.

Meals included: Breakfast, Lunch, Dinner



Day 9



Private Transfer from Flockhill to Arthurs Pass

Your driver will transfer you to Arthur's Pass Train Station.

TranzAlpine Scenic Train: Arthurs Pass to Christchurch Scenic Plus with Great Journeys NZ

Great Journeys New Zealand's Scenic Plus carriage provides comfort and vast panoramic views, making the TranzAlpine scenic train journey the perfect way to explore the 'Great Divide' and the indomitable spine of mountains that partition New Zealand's South Island. Scenic Plus offers an all-inclusive experience on the unique TranzAlpine scenic rail journey to invigorate all the senses! Enjoy epic scenery while you savour regionally inspired cuisine paired with sumptuous wine and beer, all from the comfort of your luxurious seat—a hosted dining experience like no other. Simply relax, sink back in your seat, and soak up the incredible scenery.

Private Transfer Christchurch Train Station to Accommodation

On arrival at the Christchurch train station, you will be met by a private driver and transferred to your accommodation.

Christchurch

Christchurch known in Māori as Ōtautahi, is the largest metro area in the South Island. Commonly referred to as New Zealand's "Garden City", Christchurch is home to one of the biggest public parks in the country, and beautiful botanic gardens. The city was hit with devastating earthquakes in 2010 and 2011, now the city crosses the line between its English heritage and a new modern architecture. To take in some arts and culture, pay a visit to the Canterbury Museum or the Christchurch Art Gallery. Take a step back in time with a tram around the city or punt along the Avon River. If tasting your way around the city is your means of travel, try out a cultural eating tour. A short drive from the CBD will lead you to the outskirts of the Banks Peninsula beachside suburb of Sumner or through the tunnel to Lyttleton Harbour which hosts fantastic markets on Saturday mornings.

Your accommodation: Otahuna Lodge

Otahuna Lodge is an exclusive country estate. Each suite retains architectural features from the 19th century such as ornate original fireplaces, carved inglenooks and stained glass windows. All luxury suites offer super-king beds, fine custom-made linens, toiletries by Penhaligons of London, deep bathtubs and separate rain showers.

Meals included: Breakfast, Dinner



Day 10



Private transfer accommodation to airport to collect rental car

A private transfer will meet you at your accommodation and transfer you to Christchurch Airport to collect your rental car.

Collect Rental Car

This tour's from price includes an intermediate-sized vehicle, setting you up for comfortable travels. Yet, we understand every adventure is unique! Feel free to select the perfect wheels from our incredible collection of rental cars, spanning from economy hatchbacks to premium SUVs.

Christchurch to Aoraki-Mt Cook National Park

Drive through the heart of the South Island, crossing the vast Canterbury plains. Catch your breath in Geraldine before continuing through Fairlie. Ascending Burkes pass you'll come to the picturesque town of Lake Tekapo. Follow the road and take in the view of Aoraki-Mt Cook (New Zealand's tallest mountain) from the shores of Lake Pukaki, known for its glacier fed turquoise blue colour. Continue along the lake to your final destination Aoraki-Mt Cook Village.

Aoraki-Mt Cook National Park

At 3754m Aoraki-Mt Cook is Aotearoa-New Zealand's highest mountain, located deep in the heart of the Southern Alps. As well as its impressive beauty, Aoraki-Mt Cook National Park is also home to a huge range of awe-inspiring sights and activities. Take to the air with Mt Cook Ski Planes for a scenic flight that includes a glacier landing. At around 27 kilometres long the Tasman Glacier is New Zealand's longest and a Glacier Explorers tour allows you to see its unique features up close.

There are many short hikes in and around the park and these are well signposted around the village. Those with an interest in the night sky should take a Big Sky Stargazing tour with the Hermitage Hotel. The region is considered to have one of the clearest night skies in the world and is one of the few gold-rated dark sky reserves worldwide.

Visit the Sir Edmund Hillary Alpine Centre for insight into this region's mountain climbing history. You'll also learn of Sir Ed's incredible achievements and his dedication to helping others around the world.

Mt Cook Lakeside Retreat - Dusk to Dark Stargazing

Located in the heart of the Aoraki Mackenzie International Dark Sky Reserve, with no light pollution.

Marvel as the sun dips behind the grand Southern Alps during our Dusk to Dark excursion. Join us on the Lavender Lawn at the magical twilight hour and indulge in the awe-inspiring panoramas of Aoraki/Mount Cook, offering an ideal backdrop for capturing stunning photographs. As darkness envelops the sky, step into the entrancing realm of the Pukaki Observatory at Mt Cook Lakeside Retreat, where you'll be welcomed with a glass of wine or a dram of whisky to set the mood. Our knowledgeable astronomer will then guide you through a celestial exploration using a high-powered laser pointer and a telescope mounted on a pier. Delve into the enigmas of constellations and their mythologies, stars, star clusters, nebulae, planets, the Moon, and more, while also relishing real-time views of cosmic wonders on a large screen via a camera connected to the telescope. Whether you're a novice to stargazing or a seasoned enthusiast, our guided tour ensures an unforgettable journey beneath one of the world's darkest and clearest skies. This extraordinary experience offers a rare opportunity to stargaze within the renowned Aoraki Mackenzie International Dark Sky Reserve.

Your accommodation: Mt Cook Lakeside Retreat

Mt Cook Lakeside Retreat offers exclusive accommodation, set on the shores of Lake Pukaki overlooking Mt Cook National Park. After a day of exploring relax in your private peaceful outdoor spa pool.

Meals included: Breakfast, Dinner



Day 11



Glacier Sea Kayaking

The legendary voyage that includes getting up close and personal with a real glacier and icebergs. Sea-Kayak into pristine glacial bays surrounded by glacial ice and you may be able to Sea-Kayak near to or even touch ice bergs. Experience the beauty and peaceful nature this quiet zone of Aoraki/Mt Cook has to offer. Listen to avalanches thundering off the slopes of Mt Sefton from a safe distance.

Walking Tracks in Aoraki-Mt Cook National Park

Aoraki-Mt Cook Village offers a variety of short scenic walks suitable for all ages and fitness levels. Start your adventure at the Department of Conservation Information Centre, where you can learn about track conditions, local history, and the area's wildlife. Here are a few popular walks to explore: Bowen Bush Walk: 10-minute return Glencoe Walk: 10-minute return Red Tarns Track: 2-hour return Kea Point Walk: 2-hour return Sealy Tarns Track: 3 - 4 hours return Please be aware that at Aoraki/Mount Cook, you will need to pay for parking at the White Horse Hill car park. The cost is \$5 per hour or \$25 for the full day. A 20-minute free period is available for quick drop-offs.

SUGGESTED ACTIVITY - Mt Cook Retreat Fly Fishing

Mt Cook Retreat is located in the heart of a vast inter montane basin well known as a fly fishing and game hunting destination. There is an abundance of trout in the clear waters of the region and this can produce wonderful sport, especially since rainbow trout are present in most waters along with their brown trout counterparts and there are several fishing choices with over 30 streams, lakes and canals, all within 1 hour's drive from the Retreat.

Your accommodation: Mt Cook Lakeside Retreat

Mt Cook Lakeside Retreat offers exclusive accommodation, set on the shores of Lake Pukaki overlooking Mt Cook National Park. After a day of exploring relax in your private peaceful outdoor spa pool.

Meals included: Breakfast, Dinner



Day 12



Aoraki Mt Cook National Park to Wanaka

Twizel, just south of Aoraki Mt Cook was the location of many Lord of the Rings movie scenes and a little further on is Omarama, the gliding capital of New Zealand. Wrinkly Rams is a local cafe with great coffee and fresh homemade food. The Lindis Pass is one of New Zealand's highest roads with the summit reaching 971 metres. The tussock covered hills offer an unusual contrast as you pass from the Mackenzie Basin and into Central Otago. The first Central Otago settlement you reach is the quaint village of Tarras, which has a number of boutique stores and a lovely cafe. Approaching Wanaka the wonderful alpine lake welcomes you to the town. Despite its size Wanaka has a wide variety of activities available. In winter it is without doubt New Zealand's premier ski destination with its very close proximity to Treble Cone and Cardrona ski fields. Mount Aspiring National Park sits to the western edge of the lake and offers wonderful walking tracks for all abilities; the Rob Roy Track is a great introduction to this spectacular park. Fishing, sailing and water skiing are popular pastimes on the lake and the many beach access points provide great spots for picnics and relaxing.

Wānaka

Nestled on the shores of one of New Zealand's largest lakes and framed by the stunning Southern Alps. Wānaka is an alpine village that perfectly blends adventure, breathtaking scenery, and a laid-back vibe. In winter, Wānaka transforms into a bustling hub as snow sports enthusiasts flock to its renowned ski fields, Treble Cone and Cardrona, as well as cross-country at Snow Farm. As the gateway to Mt Aspiring National Park, it offers endless opportunities for hikers, with trails winding through remote wilderness, majestic peaks, and serene river valleys. Closer to town, you'll find a network of scenic walking tracks, such as the popular Mount Iron Track, and from the lakefront, it is a short walk to "That Wanaka Tree". For thrill-seekers, Wānaka is an adrenaline playground, offering skydiving, paragliding, downhill biking, rock climbing, and jet boating.

Scenic Helicopter Transfer - Wanaka to Minaret Station Lodge

Accessible only by helicopter, we offer daily departures flying from our Queenstown and Wanaka heliports. This is not your normal hotel transfer. Flying through spectacular mountain valleys, over snow-capped peaks and across braided alpine rivers, the journey into Minaret Station is up there amongst some of the world's finest scenic flights. And this we call a transfer!

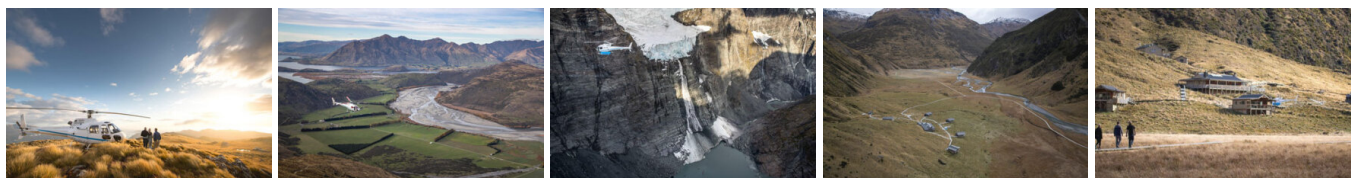
Your accommodation: Minaret Station Lodge

Minaret Lodge is a luxury retreat set in a remote glacial valley. Offering elegant accommodations, it blends modern comfort with alpine charm. Enjoy gourmet breakfasts, a cozy lounge, and personalised service.

Meals included: Breakfast, Dinner



Day 13



Minaret Station Lodge

Minaret Station Lodge offers a selection of off-the-beaten-path experiences for all interests and fitness levels, allowing you to make the most of your stay. Adventure activities include heli-skiing, heli-biking, heli-hiking, backcountry fishing or a guided hunting expedition. Wish to explore at a slower pace? Minaret Station also offers horse-riding tours or an exclusive look into the day-to-day operations of the 50,000-acre private farm. Talk to our friendly sales consultants about arranging a day experience, or, bask in the sun and enjoy the incredible scenes at Minaret Station.

Your accommodation: Minaret Station Lodge

Minaret Lodge is a luxury retreat set in a remote glacial valley. Offering elegant accommodations, it blends modern comfort with alpine charm. Enjoy gourmet breakfasts, a cozy lounge, and personalised service.

Meals included: Breakfast, Lunch, Dinner



Day 14



Scenic Helicopter Transfer - Minaret Station Lodge to Wanaka

You will be transferred by helicopter back to Wanaka.

Wanaka to Queenstown

Leaving Wanaka, you head over New Zealand's highest sealed road, Crown Range Road, before dropping into Queenstown. This drive only takes about an hour, but you should allow more time to enjoy the magnificent scenery and explore the walks and many stops en route, including the Cardrona Distillery, wonderful views from Crown Range's highest point over Queenstown, the picturesque town of Arrowtown, and if time allows, even the wineries in Gibbston.

Queenstown

Queenstown known in Māori as Tāhuna, is home to many adrenaline-inducing activities. Nestled on the shores of Lake Wakatipu, this alpine town has very distinct seasons, and most adrenaline-filled activities can be accessed year-round. Queenstown is home to jet boating, bungy jumping, rafting, skydiving, paragliding, and even indoor thrills. If you want that rush - head out on the Shotover Jet, dive off the Nevis Bungy, freefall on the Canyon Swing, or Zip line the Gondola. While arguably the brightest gem in New Zealand's crown, Queenstown offers far more than an action-packed getaway. If you're looking for a slightly slower pace, there are plenty of recreational activities, including hiking and biking trails to explore, guided tours, boat cruises, scenic flights, or spa and wellness options to help you get away. Head to the lakefront, eat at one of the al fresco eateries, and soak up the local vibes; catch a ride on the iconic 100-year-old steamship the TSS Earnslaw; or take the Skyline Gondola and enjoy bird's-eye views of the Remarkables mountain ranges and Lake Wakatipu. Pack a picnic and go for a hike, only 20 minutes from Central Queenstown, Coronet Peak opens for summer sightseeing. You can ride the Peak Gondola to the top for panoramic views and hike the trails, or go for a bike ride on many excellent biking trails. In winter, Queenstown becomes a world-class winter resort, with four ski areas and a range of activities, bars, restaurants, and ways to relax and unwind.

Rosewood Matakauri Lodge Dining

Rosewood Matakauri Lodge in Queenstown offers a superior fine dining experience rooted in Modern New Zealand cuisine, where the daily changing menu prioritizes local, seasonal, and sustainable ingredients primarily sourced from the Central Otago region and the lodge's own garden. The main venue, The Dining Room, provides an intimate atmosphere complemented by breathtaking panoramic views of Lake Wakatipu and The Remarkables, making every meal a visual and culinary delight. Guests typically enjoy a sophisticated, multi-course dinner tasting menu, which can be perfectly paired with local Central Otago wines, especially the region's famous Pinot Noir. Beyond the main dining room, the lodge provides flexible dining options, including private meals on suite patios, casual drinks on the Remarkables Terrace, and personalised dishes accommodated by the attentive culinary team. This ensures a refined yet relaxed gastronomic journey that is a highlight of any stay.

Your accommodation: Rosewood Matakauri Queenstown

Spectacularly situated on Lake Wakatipu, Matakauri Lodge offers stunning views from every angle of the Remarkable, Cecil and Walter Peak mountain ranges. Just seven minutes from Queenstown the lodge provides an alpine lakeside retreat nestled in one of the world's most serenely beautiful landscapes.

Meals included: Breakfast, Lunch, Dinner



Day 15



Sunrise Balloon Adventures

Experience sunrise over the lakes and mountains from the serenity of a hot air balloon. You'll float gently with the breeze, enjoying incredible panoramic views, and your flight is followed by a champagne-style breakfast at your landing spot. Flights are at dawn when the air is cool and calm, and in the right conditions, you can expect to see views of Coronet Peak and The Remarkables ski areas, Mount Aspiring in the Southern Alps and Mount Tutoko in Fiordland National Park. You can also see Lake Wakatipu, Lake Hayes, the Shotover and Kawarau rivers. Additionally, a bonus for many is the views of some Lord of the Rings scenes, such as The Ford of Bruinen, Dimrill Dale, The Gates of Argonath and The Pillars Of The Kings. Also visible is Mount Earnslaw, one of the great mountains seen in Isengard. The flight is for approximately 1 hour, and you will be standing for the duration of the flight.

Half Day Gibbston Wine Tour with Black NZ

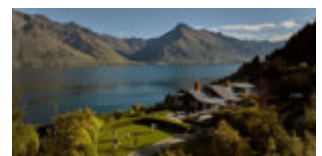
Settle into the leather seats of a luxury vehicle for a private afternoon tailored entirely to your palate. Guided by a local wine professional, you'll wind through the dramatic Kawarau Gorge to the Gibbston Valley, home to some of the world's most celebrated cool-climate pinot noir.

This is no ordinary tasting; you'll enjoy exclusive access to three or four boutique cellar doors, often meeting the personalities behind the labels. Whether you're swirling a vintage in a subterranean wine cave or pausing for a gourmet platter overlooking the vines, the pace is entirely yours.

Your accommodation: Rosewood Matakauri Queenstown

Spectacularly situated on Lake Wakatipu, Matakauri Lodge offers stunning views from every angle of the Remarkable, Cecil and Walter Peak mountain ranges. Just seven minutes from Queenstown the lodge provides an alpine lakeside retreat nestled in one of the world's most serenely beautiful landscapes.

Meals included: Breakfast, Dinner



Day 16



Depart Queenstown today

Drop your rental car at the Queenstown airport today.

Farewell from Aotearoa / New Zealand

Bid farewell to Aotearoa / New Zealand, taking with you unforgettable memories of its breathtaking landscapes and incredible adventures. In Māori, it is said mā te wā, which is not goodbye, it is see you soon!

Tour details

Departures:	Daily
Tour type:	Self Drive Tour (FTNZ ONLY)
Starts:	Christchurch
Finishes:	Queenstown
Tour length:	16
Accommodation:	Farm Stay
Car/transport type:	

Accommodation summary

Day 1	Movenpick Hotel Wellington
Day 2	Middlehurst Station
Day 3	Middlehurst Station
Day 4	Middlehurst Station
Day 5	Hapuku Lodge & Tree Houses
Day 6	Flockhill - Villas
Day 7	Flockhill - Villas
Day 8	Flockhill - Villas
Day 9	Otahuna Lodge
Day 10	Mt Cook Lakeside Retreat
Day 11	Mt Cook Lakeside Retreat
Day 12	Minaret Station Lodge
Day 13	Minaret Station Lodge
Day 14	Rosewood Matakauri Queenstown
Day 15	Rosewood Matakauri Queenstown