



Fiordland Escape Package

Begin your adventure in wonderful Queenstown, and then travel to Te Anau, a picturesque town nestled on the shores of a lake, where rugged mountains meet serene waters. Cruise through Milford Sound, a UNESCO World Heritage Site renowned for its dramatic fjords, cascading waterfalls, and sheer cliffs that plunge into the sea. Then, venture into the remote wilderness of Doubtful Sound, a hidden gem accessible only by boat, where tranquility reigns amidst towering peaks and pristine wilderness. With each stop, discover the raw, unspoiled beauty of Fiordland, a testament to nature's awe-inspiring power and a journey you'll treasure for a lifetime.

Starts in: Queenstown
Finishes in: Queenstown
Length: 7 days / 6 nights
Accommodation: Hotel 4 star
Can be customised: Yes

This itinerary can be customised to suit you perfectly. We can add more days, remove days, change accommodations, mix it up, add activities to suit your interests or simply design and create something from scratch. Call us today to get your custom New Zealand itinerary underway.



Inclusions:

Includes: Late model rental cars

Includes: Unlimited kms

Includes: Airport & ferry terminal rental car fees

Includes: Comprehensive tour pack (detailed itinerary, driving instructions, map/guidebooks, brochures)

Included activity: Private Transfer Queenstown Airport to your Accommodation

Included activity: Private Transfer - Blue Bubble - Queenstown Accommodation to Airport

Included activity: Kepler Track Guided Walk

: 6 breakfasts, 1 dinner

Includes: Fully inclusive rental car insurance (excess may apply)

Includes: GPS navigation

Includes: Additional drivers

Includes: 24/7 support while touring New Zealand

Included activity: Electronic Travel Guide and In-Country Support App

Included activity: Milford Premium Cruise with RealNZ

Included activity: Doubtful Sound Fiordland Navigator Overnight Cruise

Day 1



Welcome to Queenstown

Renowned for its adrenaline inducing activities Queenstown is synonymous with adventure. Parked on the shores of Lake Wakatipu this small alpine town is nestled below soaring vistas of The Remarkables Mountain Range. While arguably the brightest gem in New Zealand's crown, Queenstown offers far more than an action-packed getaway. Spend time on the Gibbston wine trail and end with a meal at Michelin star chef Josh Emett's restaurant, Rata. Take a trip down memory lane on a 100 year old steamship the TSS Earnslaw. Soak in the scenery on your walk around the lake, or venture further afield into Fiordland National Park. Head over the hill to resort town Wanaka, or re-live scenes from Lord Of The Rings by four wheel drive. But - if you really do want that rush - head out on the Shotover Jet, dive off the Nevis Bungy, freefall on the Canyon swing or Zip line the Gondola. Just be sure it's done on an empty stomach & don't say we didn't warn you!

Private Transfer Queenstown Airport to your Accommodation

On arrival you will be met by a private driver and delivered to your Queenstown accommodation.

SUGGESTED ACTIVITY - TSS Earnslaw Cruise and Walter Peak Gourmet BBQ Dinner

Enjoy a quintessential Kiwi experience, a delicious gourmet BBQ buffet meal, and a farm demonstration in a stunning lakeside setting. Take in the stunning views of Lake Wakatipu and its surroundings as you cruise across the lake to the historic Walter Peak high country farm aboard the TSS Earnslaw Steamship. Enjoy the ambiance of the heart of the stately homestead while your Colonel's Homestead Restaurant chef prepares a gourmet BBQ dinner. Your seasonal menu includes an extensive selection of local New Zealand produce, including succulent meats and a selection of delicious vegetables and salads. Complete your meal with your choice of delicious desserts, or New Zealand cheeses. After dinner, watch the farm dogs in action with a sheep-herding demonstration and say hello to the other farm animals. Finally, cruise home under the southern stars and enjoy the fresh night air as the lights of Queenstown draw ever closer.

SUGGESTED ACTIVITY - Gondola and Buffet Dinner with Skyline Queenstown

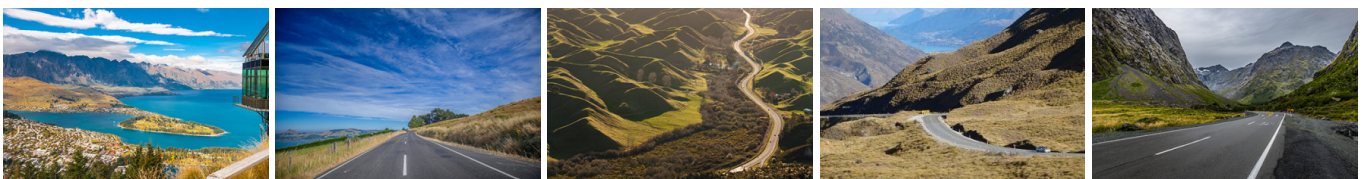
With breathtaking views across Queenstown and Lake Wakatipu, the Skyline Complex is a must-do. Catch the fully enclosed gondola to the summit for a remarkable panorama of the city's surroundings. Wander the outdoor viewing decks then enjoy a gourmet buffet meal in the Stratosphere Restaurant.

Your accommodation: Millennium Hotel Queenstown

Right in the heart of the action, the Millennium Hotel is just minutes from Queenstown's central shopping and entertainment district. Outdoor activities such as bungy jumping, white water rafting and jet boating are just some of the easily accessible activities nearby in New Zealand's adventure capital.



Day 2



Taxi Transfer from Queenstown Accommodation to Airport

Collect Rental Car

Choose a car to best suit your needs from our fantastic rental car range. From compact economy, hatchbacks to prestige SUVs.

Queenstown to Te Anau

Passing through the bustling suburb of Frankton, follow the shores of Lake Wakatipu. The Remarkables mountain range towers over you on the stretch of road known as "The Devil's Staircase" leading you to the township of Kingston. You'll venture into Southland before crossing the rolling tussock lands of Mossburn (deer capital of New Zealand) and shortly arriving at Te Anau, the gateway to Fiordland National Park.

Walking tracks in and around Te Anau

Lake Te Anau is a great place for lots of activities including walking, tramping, boating, fishing, hunting, kayaking, mountain biking, swimming and water skiing at Brod Bay. Te Anau is the closest town with facilities to Fiordland National Park, a wilderness area famed for tramping and spectacular scenery. Kepler track: Carpark to Dock Bay and Brod Bay

From the Kepler Track carpark, the track follows the lake shore through mountain and red beech forest, with kamahi and some scattered rimu and miro and yellow-flowering kowhai.

Distance: 5.6 km return via same track. Completion Time: 1-3 hours return Kepler Track: Carpark to Rainbow Reach

From the Kepler Track carpark, the track follows the terraces of the Waiau River along the Kepler Track through red and mountain beech forest to Rainbow Reach.

Distance: 9.5 km return via same track. Completion Time: 2.5 hours one way Kepler Track: Rainbow Reach to Shallow Bay or Moturau Hut

From the Rainbow Reach carpark, cross the swing bridge and follow the track to the Control Gates for 200 m before turning left towards a short steep ascent. After that the track is gently undulating and wanders through mountain beech forest with some great river views. Some scenes in the Lord of the Rings movies were filmed near this part of the river.

Distance: 6 km return via same track. Completion Time: 3 - 3 hours 30 minutes return Kepler Track (Carpark to Luxmore Hut)

Carpark to Luxmore Hut - This strenuous walk provides impressive views of Lakes Te Anau and Manapouri and Te Anau basin on one side, and the Murchison and Kepler Mountains on the other.

Distance: 13.8 km one way return via same track. Completion Time: 8-10 hours return Visitor Centre to Upukerora River Track

This easy track leads alongside the Te Anau lakefront to where the Upukerora River flows into the lake.

Completion Time: 3 hour return

SUGGESTED ACTIVITY - Pure Wilderness Jet Boat with Fiordland Jet

Jet boat down the Waiau river, across Lake Manapouri, to the ancient forest of the Fiordland National Park. Enjoy the thrill of jet boating down the majestic trout-filled Waiau River, to the serene Lake Manapouri. Step foot into the Fiordland National Park and go for a short walk while learning about the ancient beech forest and ferns. Your jet boat ride includes a number of stops at the exact locations of the filming the "Fellowship of the Ring" on the Waiau or "Anduin River". The driver will tell you the inside story of the filming the Lord of the Rings on this river. The trip will also include some thrilling 360 degree turns and spins as well as interesting interpretation about the flora and fauna and the local European and Māori history.

SUGGESTED ACTIVITY - Te Anau Glowworm Caves with RealNZ

Begin your Te Anau Glowworm experience with a scenic cruise across Lake Te Anau on board the luxury catamaran, Luminosa, to the western side of the lake. On arrival, you'll enter the caves through Cavern House, where informative displays detail the history of this 12,000 year old underground network. You'll then explore by limestone pathway while your guide points out hidden whirlpools, sculpted rock formations, and a rushing underground waterfall. See a magical display of thousands of glowworms as you glide through the darkness in a small boat.

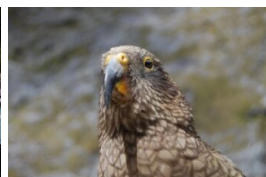
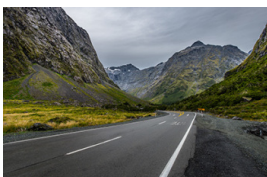
Your accommodation: High Leys Lodge

Located just 4 kilometres out of Te Anau along the Milford Road, High Leys Lodge is set in 5 acres of established garden. With panoramic views of Lake Te Anau and the Fiordland National Park, High Leys Luxury Lodge offers an adult only, exclusive, peaceful & luxurious escape. There are 3 double rooms, all with private en-suite bathrooms.

Meals included: Breakfast



Day 3



Te Anau to Milford Sound, returning to Te Anau

The magnificent Milford Road leading to Milford Sound offers some of the most beautiful and iconic scenery in the country. Countless photo opportunities mean this drive should not be rushed. From crystal clear lakes and towering mountains to lush glacier-formed meadows, this area is abundant with picture-perfect scenes. Continue on through the Homer Tunnel, an engineering marvel at 1219 meters long. Arriving in the village of Milford, you will be greeted with an amazing view of Mitre Peak. A day cruise into the heart of the sound is not to be missed.

You'll learn about how this magnificent area was formed and experience the wonder of the falls that line the Fjord before back-tracking the way you came.

Milford Premium Cruise with RealNZ

Get up close and personal with Milford Sound on a leisurely cruise of this spectacular fiord aboard the M.V Sinbad, an exclusive vessel for a premium experience. From thundering waterfalls to sky-high mountains to lush rainforests, Milford has it all. Experience the spray of a waterfall as you cruise close to sheer rock faces. With a glass of bubbles on arrival and canapes provided throughout the journey, this is the perfect way to explore Milford Sound. At a capped capacity of 40 people and a roaming nature guide providing informative commentary throughout the extended cruise, this experience allows guests to enjoy the Fiord at a relaxing pace.

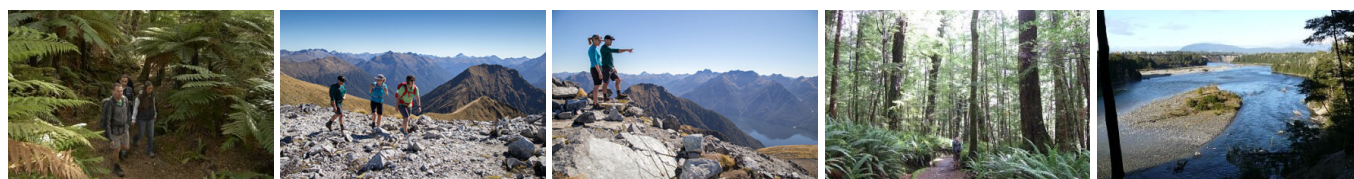
Your accommodation: High Leys Lodge

Located just 4 kilometres out of Te Anau along the Milford Road, High Leys Lodge is set in 5 acres of established garden. With panoramic views of Lake Te Anau and the Fiordland National Park, High Leys Luxury Lodge offers an adult only, exclusive, peaceful & luxurious escape. There are 3 double rooms, all with private en-suite bathrooms.

Meals included: Breakfast



Day 4



Kepler Track Guided Walk

Enjoy a guided walk from Te Anau alongside the Waiau River, Lake Te Anau or Manapouri on the Kepler Track. The track has a gentle gradient, is well maintained and suitable for all abilities. During the walk the Trips & Tramps guide details native fauna and flora, explains the unique beech forest ecological cycle and shares conservation efforts made on the Kepler Track and around Fiordland. Enjoy a classic kiwi cuppa at a scenic location and share a yarn with your local guide.

Your accommodation: High Leys Lodge

Located just 4 kilometres out of Te Anau along the Milford Road, High Leys Lodge is set in 5 acres of established garden. With panoramic views of Lake Te Anau and the Fiordland National Park, High Leys Luxury Lodge offers an adult only, exclusive, peaceful & luxurious escape. There are 3 double rooms, all with private en-suite bathrooms.

Meals included: Breakfast



Day 5



Te Anau to Manapouri

This short drive takes you along the lake edge of Te Anau and across lush southern farmlands to the small township of Lake Manapouri, gateway to Doubtful Sound.

Doubtful Sound Fiordland Navigator Overnight Cruise

Take in the tranquility of remote Doubtful Sound on this unique overnight wilderness cruise. Beginning in Manapouri with a short boat ride across the lake, you'll be taken by coach over the Wilmot Pass to Deep Cove, Doubtful Sound. Board the Fiordland Navigator, a purpose-built vessel designed like a traditional coastal trading scow. Be accommodated in a private cabin with an ensuite bathroom or a quad-share bunk room with shared bathroom facilities. The Navigator has a large spacious deck for viewing the scenery and wildlife as well as a dining saloon, bar and observation lounge. As you take in the stunning scenery of the Fiord, you'll be provided with a running commentary of the area and its history, points of interest and wildlife. You'll have the opportunity to see dolphins, fur seals and, if you're lucky rare Fiordland penguins. After anchoring in a sheltered cove, choose to explore the shoreline by kayak or stabcraft, or if you're really brave take a dip in the water. In the evening enjoy a three-course buffet dinner prepared on board and served in the dining saloon. Enjoy beer and fine wines from the licensed bar, and spend time star gazing on the upper deck. Following hearty cooked breakfast the next morning you will spend your remaining time exploring other parts of the fiord before returning to Deep Cove for the trip back to Manapouri.

Your accommodation: Fiordland Navigator Overnight Boat in Doubtful Sound

The Fiordland Navigator is purpose built for cruising in the fiords. The vessel offers spacious viewing decks, a comfortable dining saloon and observation lounge.

Meals included: Breakfast, Dinner



Day 6



Manapouri to Queenstown

Crossing the rolling tussock lands you pass through Mossburn, the deer capital of New Zealand. Continue north through Southland countryside towards Lake Wakatipu. The road now hugs the lake edge and the Remarkable mountain range towers over you as you approach Queenstown, the adventure capital of New Zealand.

Walking tracks in and around Queenstown

Queenstown is well known for its adventure sports and activities but it also has a great network of walking tracks and trails to suit all abilities and time frames. The department of conservation office located on Shotover Street can offer local advice on the conditions of walking tracks.

Some of the more popular walks are listed below.

Queenstown Hill - around 3 hours return (4 kilometres). Gravel path and then trail. A 500 metre climb through pine forest to the summit of Te Tapu-nui (mountain of intense sacredness). The climb is well rewarded with 360 degree views of Remarkables Mountain Range, the Kawarau River, Cecil Peak, and of course Lake Wakatipu. The track starts on Belfast Terrace which is just 1 km from the city centre.

Ben Lomond - around 2 hours (4 1/2 kms return). Take the Skyline Gondola ride to the terminal and the track is signposted from here. This is quite a steep climb and not recommended for children. Also take note of weather forecasts as the summit sits at 1748 metres. The effort is rewarded with spectacular views and on clear days you can see Mt Earnslaw and Mt Aspiring.

Bobs Cove - 20 minutes of easy lakeshore walks. Bobs Cove is 14 kilometres from Queenstown along the Glenorchy Road. Take the drive along the road and Bobs Cove is signposted.

Queenstown Gardens

The Queenstown Gardens are just a few minutes walk from central Queenstown and offer a beautiful and tranquil setting away from the hustle and bustle. The landscaped gardens include plenty of places to sit down and admire the beauty of the gardens. Pristine lawns, a large water feature, a wide variety of trees and plants, a rose garden and a couple of significant memorials all combine to provide that perfect escape from downtown Queenstown. The gardens are a popular place to bring a picnic, relax with friends and family and enjoy the views of Lake Wakatipu. The most visible tree is the Douglas Fir which provides a protective cover around the gardens and seclusion from the lively downtown area of Queenstown. For a bit of fun, the gardens feature an 18-hole disc golf course, inviting you to complete a round using your disc. Metal baskets serve as the holes, with designated pars and tees adding to the challenge. Frisbees are readily available for purchase at most outdoor shops in the town center.

Your accommodation: Millennium Hotel Queenstown

Right in the heart of the action, the Millennium Hotel is just minutes from Queenstown's central shopping and entertainment district. Outdoor activities such as bungy jumping, white water rafting and jet boating are just some of the easily accessible activities nearby in New Zealand's adventure capital.

Meals included: Breakfast



Day 7



Return your rental car

Return your rental vehicle to your designated depot before your next adventure.

Farewell from Aotearoa-New Zealand

Bid farewell to New Zealand, taking with you unforgettable memories of its breathtaking landscapes and incredible adventures. In Maori, it is said mā te wā, which is not goodbye, it is see you soon!

Tour details

Departures:	Daily
Tour type:	South Island Self Drive
Starts:	Queenstown
Finishes:	Queenstown
Tour length:	7
Accommodation:	Hotel 4 star
Car/transport type:	

Accommodation summary

Day 1	Millennium Hotel Queenstown
Day 2	High Leys Lodge
Day 3	High Leys Lodge
Day 4	High Leys Lodge
Day 5	Fiordland Navigator Overnight Boat in Doubtful Sound
Day 6	Millennium Hotel Queenstown