

---

## Northern Express Escape

Visit Waitomo Caves, Te Puia, Tamaki Maori Village, Hobbiton Movie Set and Wai-O-Tapu thermal area on this action-packed tour, and enjoy a full day in Rotorua to explore or relax at your own leisure.

---

Starts in: Auckland  
Finishes in: Auckland  
Length: 4days / 3nights  
Accommodation: Motels  
Can be customised: Yes

This itinerary can be customised to suit you perfectly. We can add more days, remove days, change accommodations, mix it up, add activities to suit your interests or simply design and create something from scratch. Call us today to get your custom New Zealand itinerary underway.



---

### Inclusions:

Includes: All coach transport  
Includes: All pick ups/drop offs at destinations  
Includes: Afterhours emergency support while touring  
Included activity: Rotorua and Waitomo Caves Tour and Te Puia with FlexiTours - Lunch Included  
Included activity: The Visitor Promise - Cultural Learning Course  
Included activity: Hobbiton Day Tour from Rotorua with Gray Line / GreatSights - Lunch Included  
Included activity: Te Pā Tū Evening Māori Cultural Experience - Dinner Included  
Included activity: Eco Thermal Park Tour with Elite Adventures  
Included activity: Private Transfer Rotorua Accommodation to Rotorua Intercity Depot with Xquizit  
Included activity: Rotorua to Auckland by InterCity Coach  
2 lunches, 1 dinner

## Day 1



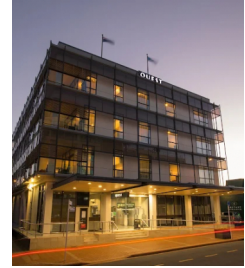
### Rotorua and Waitomo Caves Tour and Te Puia with FlexiTours - Lunch Included

Travel from Auckland to Rotorua and visit the famous Waitomo Caves along the way. This tour showcases some of the most iconic destinations on North Island. Discover Rotorua, renowned for its geothermal activity and rich Māori heritage. Enjoy a guided tour of the world-famous Waitomo Glowworm Caves and explore the geothermal wonderland of Te Puia. Your journey concludes in Rotorua.

#### Your accommodation: Quest Rotorua Central

Located in the heart of Rotorua, just a stone's throw from the restaurant and shopping precinct. Purpose built in 2012, all apartments are equipped with modern fixtures, full cooking and laundry facilities that make Quest Rotorua Central your perfect home away from home.

Meals included: Lunch



## Day 2



### Hobbiton Day Tour from Rotorua with Gray Line / GreatSights - Lunch Included

Take a journey from Rotorua to the famous Hobbiton Movie Set, located inside a picturesque 1,250-acre sheep and beef farm near Matamata. Here, take a guided tour of the village of Hobbiton, which was carefully created in amazing detail as a film location for the Lord of the Rings and Hobbit movie trilogies. During your guided tour of this amazing location, you'll see sights like Hobbit holes, the Mill and the Green Dragon Inn, and learn how farmland was transformed into a living, breathing piece of Middle-earth. After exploring Hobbiton, enjoy a tasty lunch in the Party Marquee and then return to Rotorua.

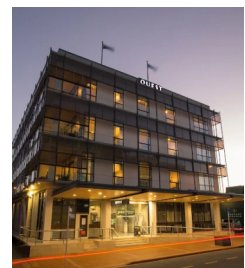
#### Te Pā Tū Evening Māori Cultural Experience - Dinner Included

New Zealand's Most Awarded Cultural Attraction, presenting Te Pā Tū. Feast on song, drama, tradition, and divine seasonal kai (cuisine) within the forest Pā (village) blanketed by towering Tawa trees, blazing bonfires, and a forest-formed amphitheatre. Te Pā Tū shares Māori history, traditions, and cultural aspirations across 4-hours of celebration and feasting. These events change with each season of the Maramataka, the Māori lunar calendar.

#### Your accommodation: Quest Rotorua Central

Located in the heart of Rotorua, just a stone's throw from the restaurant and shopping precinct. Purpose built in 2012, all apartments are equipped with modern fixtures, full cooking and laundry facilities that make Quest Rotorua Central your perfect home away from home.

Meals included: Lunch, Dinner



## Day 3

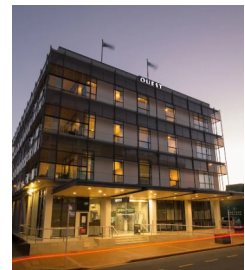


### Explore Rotorua

Peppered with natural hot springs, boiling mud pools and steaming geysers, Rotorua sits within one of the world's most active volcanic regions. Geothermal landmarks aside, this city of sulphur has a rich indigenous history. Home to several prominent Māori tribes, a visit to one of the Māori experiences should be high on your agenda, learn about the special meaning of pounamu-Greenstone with Mountain Jade, explore the geysers and arts of Te Puia or immerse in an evening with Te Pā Tū. An excursion to one of the area's wellness spas is also a must! Try the Polynesian Spa for an invigorating soak in its natural mineral hot springs, Wai Ariki offers an indulging and unwinding restorative journey or pay a quick visit to Secret Spot for a soak and a delicious smash burger! If it is a thrill you are looking for, spike your adrenaline at Rotorua Canopy Tours, soaring above the ancient native forest below. Alternatively, head up the Skyline Rotorua Gondola for soaring lake views, and ride the luge at night for an extra thrill. Make the most of your time in Rotorua with an excursion through the Wai-O-Tapu Thermal Wonderland, one of the area's most colourful volcanic attractions. Whatever you are after, Rotorua is almost certain to have it!

### Your accommodation: Quest Rotorua Central

Located in the heart of Rotorua, just a stone's throw from the restaurant and shopping precinct. Purpose built in 2012, all apartments are equipped with modern fixtures, full cooking and laundry facilities that make Quest Rotorua Central your perfect home away from home.



## Day 4



### Eco Thermal Park Tour with Elite Adventures

Experience it all on the ultimate volcanic and geothermal Rotorua tour. Discover vibrant hot springs, erupting geysers, bubbling mud pools, majestic volcanoes, and lush native forests on this fully guided half-day adventure. Journey through scenic forestry and farmland to Wai-O-Tapu, home to New Zealand's largest boiling mud pool and a series of dazzling hot springs. Witness the dramatic eruption of the Lady Knox geyser before heading to the Waimangu Volcanic Valley. Here, your guide will share the fascinating story of the Mt Tarawera eruption that shaped this spectacular geothermal wonderland.

### Private Transfer Rotorua Accommodation to Rotorua Intercity Depot with Xquizit

You will be collected from your accommodation and transferred to Rotorua Intercity Coach Depot.

### Rotorua to Auckland by InterCity Coach

The drive from Rotorua to Auckland takes you through the heart of the Waikato and its rich agricultural land. Along New Zealand's longest river, the Waikato. A little further than Hamilton is Auckland City, New Zealand's largest, spread over approximately 60 square kilometres. From the vibrant and trendy fashion and cuisine found in Ponsonby and Parnell to the breathtaking native bush and beaches of the West Coast, Auckland is full of life and the opportunities to explore are endless.

## Tour details

Departures: Daily  
Tour type: Independant Bus & Coach  
Starts: Auckland  
Finishes: Auckland  
Tour length: 4  
Accommodation: Motels  
Car/transport type:

---

## Accommodation summary

Day 1 Quest Rotorua Central  
Day 2 Quest Rotorua Central  
Day 3 Quest Rotorua Central