



Southern Highlights Tour

Your adventure begins in Christchurch, the largest city on the South Island, where you'll have time to explore before heading out. Travel through the vast Canterbury Plains to Aoraki Mount Cook National Park, home to New Zealand's tallest mountain, before continuing to Queenstown, the "adventure capital of the world," where you'll have free time to enjoy a wide range of activities. From Queenstown, take a luxury coach to Milford Sound and embark on a memorable cruise through the sound, filled with waterfalls and towering peaks, returning to Queenstown for the night. Your journey then leads along the West Coast to the village of Franz Josef, where you can explore the famous Franz Josef Glacier. Afterward, travel north to Greymouth and board the world-renowned TranzAlpine Train for a spectacular journey back through the Southern Alps to Christchurch, where your trip concludes with a transfer to the airport.

Starts in: Christchurch
 Finishes in: Christchurch
 Length: 7days / 6nights
 Accommodation: Motels
 Can be customised: Yes

This itinerary can be customised to suit you perfectly. We can add more days, remove days, change accommodations, mix it up, add activities to suit your interests or simply design and create something from scratch. Call us today to get your custom New Zealand itinerary underway.



Inclusions:

Includes: All coach transport
 Includes: All pick ups/drop offs at destinations
 Includes: Afterhours emergency support while touring
 Included activity: Private Transfer Christchurch International Airport to Christchurch Accommodation
 Included activity: Christchurch to Queenstown via Aoraki-Mount Cook National Park & Tekapo with Cheeky Kiwi - Lunch Included
 Included activity: Milford Sound Cruise and Coach Tour from Queenstown with RealNZ - Lunch Included
 Included activity: Queenstown to Franz Josef via Wānaka Small Group Tour with Cheeky Kiwi - Lunch Included
 Included activity: Franz Josef to Christchurch Tour with TranzAlpine Train via Hokitika with Cheeky Kiwi Travel - Lunch Included
 Included activity: Private Transfer from Christchurch Accommodation to Christchurch International Airport with Christchurch Touring Company
 3 lunches

Day 1



Private Transfer Christchurch International Airport to Christchurch Accommodation

On arrival, you will be met by a private driver and transferred to your Christchurch accommodation.

Welcome to Christchurch City

New Zealand's garden city is steadily being transformed into a vibrant urban destination. Encompassing a large green belt, it is known for its wide tree lined avenues and lush gardens. A great way to explore the city or easy way to see the sights or ride the historic trams across town to the renowned botanic gardens and the unique cardboard Transitional Cathedral, that's right it is built of cardboard!

SUGGESTED ACTIVITY - Discover Christchurch Afternoon Tour

A half-day sightseeing tour of Christchurch highlighting both the damage to the city inflicted by several large earthquakes in 2010 and 2011 and the rebuild which is currently in progress, together with the surviving beauty of the city and the historical landmarks. Experience the grand architecture, beautiful gardens, and scenic viewpoints on a half-day city tour of Christchurch.

Your accommodation: Merivale Manor

Originally built in the 1880's, Merivale Manor has been transformed into elegant motel and apartment accommodation. Less than 200 metres to central Merivale with its premier shopping, restaurants, cafes and bars.



Day 2



Christchurch to Queenstown via Aoraki-Mount Cook National Park & Tekapo with Cheeky Kiwi - Lunch Included

What better way to get from Christchurch to Queenstown than a small group, fully-guided day trip that combines all of the key southern highlights such as the famous Lake Tekapo, Aoraki-Mount Cook National Park and Tasman Glacier. The famously passionate tour guides, notorious for bringing your journey to life by sharing their stories and rich background knowledge and run in modern, comfortable minibuses packed with extras ensuring your comfort and safety.

Your accommodation: Blue Peaks Lodge

Blue Peaks Lodge offers well equipped self contained rooms with a fantastic location overlooking Queenstown and is just an easy five minutes walk to the Queenstown lakefront.

Meals included: Lunch



Day 3



Explore Queenstown

Queenstown, known in Māori as Tāhuna is celebrated as New Zealand's 'adventure capital'. Though Queenstown offers far more than a fast-paced, action-packed holiday. Settled on the shores of Lake Wakatipu beneath a soaring panorama of the Remarkables Mountain Range, this alpine town is surrounded by a plethora of historic, gastronomic, and scenic wonders. Whether you are looking for a scenic short walk or a longer one, you will find the perfect hike or bike trail in Queenstown. Explore Queenstown Gardens, or try out more challenging trails up to Ben Lomond Walkaway or Queenstown Hill Walking Track. Enjoy iconic views and take Queenstown Gondola up 450 metres to Bob's Peak, or ride on the 100-year-old Steamship - the TSS Earnslaw - to Walter Peak Station for dinner and a farm tour. Browse the waterfront cafes and al fresco restaurants, try out the famous Fergburger, or grab a dessert at Patagonia Chocolates.

SUGGESTED ACTIVITY - Shotover Jet Canyon Jet Boat Ride

Shotover Jet is the only company permitted to operate in the Shotover River Canyons. It's a thrilling ride! Skim past rocky outcrops at close range in your Shotover Jet 'Big Red', as you twist and turn through the narrow canyons at breathtaking speeds. And a major highlight - hold tight for the world-famous Shotover Jet full 360-degree spins! It is important you read and understand the risks associated with this activity. For more information please see [here](#).

SUGGESTED ACTIVITY - Queenstown Skyline Gondola Ride

Hop aboard the Skyline Gondola - the steepest cable car lift in the Southern Hemisphere! From which you can take in the awe-inspiring views of this spectacular landscape. Sit back and relax as you enjoy panoramic views of The Remarkables, Walter Peak, Cecil Peak, Coronet Peak and the magnificent Lake Wakatipu.

SUGGESTED ACTIVITY - TSS Earnslaw Cruise and Walter Peak Gourmet BBQ Dinner

Enjoy a quintessential Kiwi experience, a delicious gourmet BBQ buffet meal, and a farm demonstration in a stunning lakeside setting. Take in the stunning views of Lake Wakatipu and its surroundings as you cruise across the lake to the historic Walter Peak high country farm aboard the TSS Earnslaw Steamship. Enjoy the ambiance of the heart of the stately homestead while your Colonel's Homestead Restaurant chef prepares a gourmet BBQ dinner. Your seasonal menu includes an extensive selection of local New Zealand produce, including succulent meats and a selection of delicious vegetables and salads. Complete your meal with your choice of delicious desserts, or New Zealand cheeses. After dinner, watch the farm dogs in action with a sheep-herding demonstration and say hello to the other farm animals. Finally, cruise home under the southern stars and enjoy the fresh night air as the lights of Queenstown draw ever closer.

Your accommodation: Blue Peaks Lodge

Blue Peaks Lodge offers well equipped self contained rooms with a fantastic location overlooking Queenstown and is just an easy five minutes walk to the Queenstown lakefront.



Day 4



Milford Sound Cruise and Coach Tour from Queenstown with RealNZ - Lunch Included

Departing from Queenstown sit back and relax aboard a luxury glass-roofed coach to enjoy a relaxing trip along the shores of Lake Wakatipu and through the rolling countryside to Te Anau. The coach driver provides an informative commentary and plenty of photo opportunities. After a morning tea break in Te Anau, the coach continues along the spectacular Milford Road. On reaching Piopiotahi-Milford Sound, board your vessel for a leisurely cruise in the fiord. The cruise provides excellent viewing opportunities and plenty of time is available to enjoy waterfalls, rainforests, mountains and wildlife. Rain or shine, every day in Piopiotahi-Milford Sound will leave you in awe. It is important you read and understand the risks associated with this activity. For more information, see [here](#).

Your accommodation: Blue Peaks Lodge

Blue Peaks Lodge offers well equipped self contained rooms with a fantastic location overlooking Queenstown and is just an easy five minutes walk to the Queenstown lakefront.

Meals included: Lunch



Day 5



Queenstown to Franz Josef via Wānaka Small Group Tour with Cheeky Kiwi - Lunch Included

Departing from Queenstown, this journey takes you to the historic Cardrona Hotel, renowned for its rustic charm and spectacular mountain setting. In Wānaka, you'll capture the iconic photo of the Wānaka Tree with Mt Aspiring and the Southern Alps in the background. Continuing past the Clutha River, you'll enjoy scenic stops at Lake Hāwea, Thunder Creek Falls, and Ship Creek, where the rainforest meets the ocean. The tour concludes at Franz Josef, after passing glacial rivers and the picturesque Lake Matheson, a photographer's paradise.

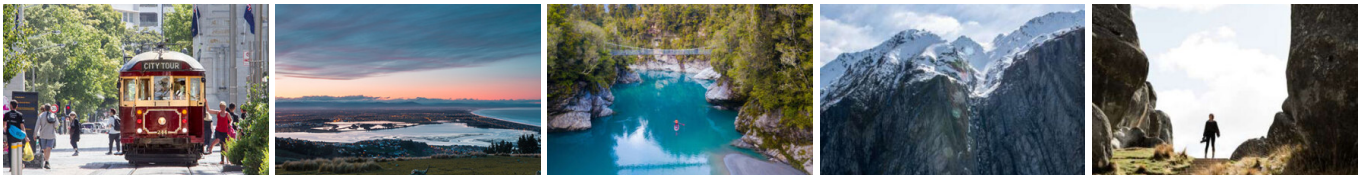
Your accommodation: Punga Grove Motel & Suites

Punga Grove is right in the heart of Franz Josef Glacier village stylish accommodation in a beautiful rainforest setting.

Meals included: Lunch



Day 6



Franz Josef to Christchurch Tour with TranzAlpine Train via Hokitika with Cheeky Kiwi Travel - Lunch Included

Experience the wild beauty of New Zealand's West Coast like never before on a unique small group tour and TranzAlpine scenic train journey with Cheeky Kiwi Travel. Starting in Franz Josef and ending in Christchurch, this iconic adventure takes you along the stunning, ever-changing coastline, uncovering hidden gems and charming towns along the way. Led by passionate, expert guides, you'll explore rugged landscapes, encounter breathtaking natural wonders, and dive deep into the heart of New Zealand's most spectacular region. Unforgettable moments await on this must-do journey.

Your accommodation: Merivale Manor

Originally built in the 1880's, Merivale Manor has been transformed into elegant motel and apartment accommodation. Less than 200 metres to central Merivale with its premier shopping, restaurants, cafes and bars.



Day 7



Private Transfer from Christchurch Accommodation to Christchurch International Airport with Christchurch Touring Company

A private transfer will collect you from your accommodation and transfer you to Christchurch International Airport in time for your departing flight.

Farewell from Aotearoa / New Zealand

Bid farewell to Aotearoa / New Zealand, taking with you unforgettable memories of its breathtaking landscapes and incredible adventures. In Māori, it is said mā te wā, which is not goodbye, it is see you soon!

Tour details

Departures:	Daily
Tour type:	Independant Bus & Coach
Starts:	Christchurch
Finishes:	Christchurch
Tour length:	7
Accommodation:	Motels
Car/transport type:	

Accommodation summary

Day 1	Merivale Manor
Day 2	Blue Peaks Lodge
Day 3	Blue Peaks Lodge
Day 4	Blue Peaks Lodge
Day 5	Punga Grove Motel & Suites
Day 6	Merivale Manor