



South Island Encounter

This comprehensive tour carves a figure eight through spectacular South Island scenery. From Christchurch travel through the Mackenzie Country to Mt Cook then on to Otago and Dunedin. A detailed exploration of Fiordland National Park follows, before heading north to Queenstown and then to the West Coast Glaciers. Crossing the Southern Alps enjoy a night in Arthur's Pass National Park before heading to the east coast and Kaikoura. Enjoy the Marlborough wine region and the golden sands of Abel Tasman National Park before turning south along the wild west coast. You return to Christchurch on board the TranzAlpine Scenic Train.

Starts in: Christchurch
 Finishes in: Christchurch
 Length: 21days / 20nights
 Accommodation: Motels
 Can be customised: Yes

This itinerary can be customised to suit you perfectly. We can add more days, remove days, change accommodations, mix it up, add activities to suit your interests or simply design and create something from scratch. Call us today to get your custom New Zealand itinerary underway.



Inclusions:

Includes: Late model rental cars
 Includes: Fully inclusive rental car insurance (excess may apply)
 Includes: Unlimited kms
 Includes: Afterhours emergency support while touring
 Included activity: Electronic Travel Guide and In-Country Support App
 Included activity: Private Transfer Christchurch International Airport to Christchurch Accommodation
 Included activity: The Visitor Promise - Cultural Learning Course
 Included activity: Ocean's Cabin with Whale Watch Kaikōura
 Included activity: TranzAlpine Scenic Train: Greymouth to Christchurch
 Included activity: Shared Transfer from Christchurch Train Station to Christchurch CBD
 Accommodation with Christchurch Touring Company
 Included activity: Private Transfer from Christchurch Accommodation to Christchurch International Airport with Christchurch Touring Company
 Included activity: Milford Sound Cruise with Real NZ - Lunch Included
 1 lunch

Day 1



Welcome to Christchurch City

Christchurch New Zealand's garden city is steadily being transformed into a vibrant urban destination. Encompassing a large green belt, it is known for its wide tree lined avenues and lush gardens. A great way to explore the city or easy way to see the sights or ride the historic trams across town to the renowned botanic gardens and the unique cardboard Transitional Cathedral, that's right it is built of cardboard!

Private Transfer Christchurch International Airport to Christchurch Accommodation

On arrival, you will be met by a private driver and transferred to your Christchurch accommodation.

SUGGESTED ACTIVITY - Discover Christchurch Afternoon Tour

A half-day sightseeing tour of Christchurch highlighting both the damage to the city inflicted by several large earthquakes in 2010 and 2011 and the rebuild which is currently in progress, together with the surviving beauty of the city and the historical landmarks. Experience the grand architecture, beautiful gardens, and scenic viewpoints on a half-day city tour of Christchurch.

Your accommodation: Quest on Cambridge

Quest on Cambridge serviced apartment-style hotel rooms offer guests a relaxed and comfortable Christchurch accommodation experience. Each room has an open-plan living area, a fully equipped kitchen, and natural light. Quest on Cambridge is a short walk from the south shopping centre and to the Botanic Gardens.



Day 2



Collect Rental Car

This tour's from price includes an intermediate-sized vehicle, setting you up for comfortable travels. Yet, we understand every adventure is unique! Feel free to select the perfect wheels from our incredible collection of rental cars, spanning from economy hatchbacks to premium SUVs.

Explore Christchurch

Following earthquakes that razed its centre and much of the outlying suburbs, Ōtautahi-Christchurch is well into a billion-dollar makeover. In the middle of the Canterbury Plains, bordering the Pacific Ocean, New Zealand's newest city is an ideal gateway to exploring the middle of the South. Go punting on the Avon River, take a historic tram ride, catch the gondola to the rim of an extinct volcano or do all three! See the world's only Cardboard Cathedral and for nature enthusiasts - wander the renowned Christchurch Botanic Gardens, or head to Oxford Terrace in the city to find a great spot to eat or drink. Drive an hour in any direction to ski, mountain bike, wine taste, whale-watch, bungee jump or play golf. Take the winding Port Hills road to the French settlement of Akaroa & Banks Peninsula and tour the vines in Waipara for an authentic New Zealand wine-tasting experience.

SUGGESTED ACTIVITY - International Antarctic Centre General Admission

The International Antarctic Centre aims to recreate the atmosphere and environment of Antarctica, providing visitors with an interactive, fun, and educational experience. Feel the full Four Seasons of Antarctica, where you'll experience a custom-built snow and ice experience, then warm up in the Scott Base interior exhibit, a replica Antarctic field camp, or other informative displays in the gallery. You'll also learn about life in modern-day Antarctica, view real little blue penguins, and experience a thrilling ride in a Hagglund all-terrain vehicle.

SUGGESTED ACTIVITY - Willowbank Wildlife Reserve

Nowhere else in New Zealand will you find such a wide range of New Zealand wildlife so close to you. Willowbank provides you with a "Kiwi Guarantee" and is home to New Zealand's largest and most accessible Kiwi viewing area. With this unique experience, you will see New Zealand's natural splendor firsthand, and view Kiwis that are not hidden behind glass. You will explore one of the most complete selections of New Zealand native and introduced wildlife in natural bush surroundings. Much of the Willowbank wildlife wander free and can be petted and fed.

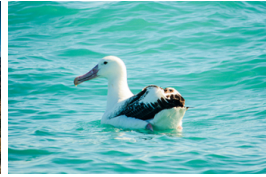
Choose to explore the reserve yourself, or for an up-close Kiwi experience, you can take a guided tour.

Your accommodation: Quest on Cambridge

Quest on Cambridge serviced apartment-style hotel rooms offer guests a relaxed and comfortable Christchurch accommodation experience. Each room has an open-plan living area, a fully equipped kitchen, and natural light. Quest on Cambridge is a short walk from the south shopping centre and to the Botanic Gardens.



Day 3



Christchurch to Akaroa

The Banks Peninsula offers a great contrast to the South Island's largest city. Just around a 1 1/2 hours drive from the city centre are rolling green hills, streams, golden sand beaches and small settlements that offer a unique insight into New Zealand's history and development. Just on the other side of the Port Hills is Lyttelton, a busy port town that was crucial to the development of Christchurch and the Canterbury Plains. Following the road around the beautiful natural harbour the names, such as Magazine Bay, Battery Point, Corsair Point and Governors Bay, remind of the importance the navy placed on this harbour.

The Banks Peninsula itself is actually the remains of a long extinct volcano, the rim of which collapsed some time ago allowing the sea to flood into and create what is now the Akaroa Harbour. In 1840 French colonists settled in Akaroa in a bid to stake a claim for the South Island. Unbeknownst the British had already declared sovereignty and a long drawn out dispute ensued with the British eventually being given government. However the French stayed and made this stunning part of the South Pacific their home and still to this day the town boasts French street names and every year a French Festival is held.

The Harbour itself is teeming with wildlife and a nature cruise is a must do activity. One of the world's smallest and rarest dolphins, Hector's dolphin, are often seen and cruises also offer excursions with the chance to swim amongst them.

SUGGESTED ACTIVITY - Swimming with Dolphins Cruise with Black Cat

Akaroa Harbour formed as a result of an extinct volcanic crater being flooded by the Pacific Ocean. It's a beautiful place with sheer cliffs and the picturesque township of Akaroa at its heart. New Zealand's only native dolphin, Hector's dolphin, makes this sheltered harbor its home, and it's here you can see them and if you wish actually swim with these incredible creatures. Following a 12-hour briefing, you depart on your cruise of which around 1 hour is spent in the water with the dolphins. Black Cat Cruises has been operating since 1985 and their success rate at sighting dolphins is over 98%. Swimming with dolphins is not always possible either due to sea conditions, the dolphins' willingness to stay and play, and other environmental reasons such as not swimming when there are babies around. They still manage to swim though on over 80% of their tours. All equipment is provided and all you need to bring along is your swimming costume and a towel.

Your accommodation: Criterion Motel

The Criterion Motel offers studio apartments with spectacular views over Akaroa Harbour. You're also just a short walk from the fantastic cafes and restaurants that Akaroa offers.



Day 4



Akaroa to Twizel via (Aoraki Mt Cook National Park)

Today you head into the heart of the South Island. Crossing the vast Canterbury Plains along the inland scenic route, Geraldine offers an ideal stop before you head into Mackenzie country. Ascending Burkes Pass, you'll enter New Zealand's high country. The picturesque town of Lake Tekapo, is the first of the large Southern Lakes on your journey. Enjoy the magnificent views from the shore, boat or air by taking a scenic flight. On arriving at Lake Pukaki, you'll be rewarded with a spectacular views of Aoraki Mt Cook, towering over the lake. Driving along the lake, you'll find your destination, Mt Cook Village. Enjoy Aoraki Mt Cook National Park by having a glacier landing with ski plane or helicopter, kayaking on a glacial lake or by walking one of the many tracks. At The Hermitage Hotel the Sir Edmund Hillary Centre is a must see. Return along the shores of Lake Pukaki to Twizel, your base for the evening.

SUGGESTED ACTIVITY - Sir Edmund Hillary Alpine Centre Museum and Theatre Explorer Pass with Hermitage

A tribute to New Zealand's Sir Edmund Hillary, a humanitarian, ambassador, and one of the world's greatest explorers. The centre showcases the Aoraki Mount Cook region, the history of climbing, and early transport used throughout the region. This comprehensive museum details the life of Sir Edmund Hillary, the Hermitage, and provides access to the 126-seat custom-designed theatre. Check out the daily film schedule which includes 3D Movies, documentaries, and 360-degree digital dome features.

Your accommodation: Distinction MacKenzie Country Hotel, Twizel

Located in the heart of the Mackenzie region the hotel's natural stone architecture compliments the mountains and rivers of New Zealand's Southern Alps. With 108 well equipped rooms the hotel can offer every facility needed for a comfortable stay.



Day 5



Twizel to Dunedin

The next town south is Oamaru and the Wrinkly Rams cafe makes an interesting coffee stop. Heading down the Waitaki valley, from Oamaru, you follow the hydro power generating system towards the east coast. The town of Oamaru is most famous for its white stone buildings, constructed with the local 'Oamaru Stone'. From the harbour, you can see blue penguins come ashore at dusk as they return from their day at sea. Further south the Moeraki Boulders are a unique geological feature and worth the short detour to the beach to view. Arriving into Dunedin, you can appreciate the city's Edwardian and Scottish heritage through its fine buildings particularly around the Octagon.

Your accommodation: Bella Vista Dunedin

Bella Vista Dunedin is centrally located and offers clean, modern, self-catering accommodation. The perfect base for exploring Dunedin, enjoy the convenience of being located in close proximity to the Dunedin CBD, shops, entertainment and other activities.



Day 6



Explore Dunedin and the Otago Peninsula

Known as the Edinburgh of the South, Dunedin City has a heavy Scottish influence. Surrounded by rugged coastal plains and windswept beaches it's home to an eclectic mix of historical and modern architecture as well as industrial technology. Renowned for its Flemish Baroque-inspired 'gingerbread house' Railway Station, this university town is bustling with life. Head to the Saturday farmers market held in the aforementioned railway grounds for a taste of organic produce, handmade crepes and local honey. Explore the many cafes and wine bars in The Octagon, then continue on a self-guided walking tour of the internationally acclaimed Street Art dotted around the city. Drive to the coast and watch the freighters passing in the distance while you sunbathe, or hire a mountain bike and test your legs on one of the many trails available in the area. For a more immersive historical experience, follow the coast to New Zealand's only castle, Larnach Castle. On your way back be sure to head to the Otago Peninsula to see the largest mainland Albatross colony in the world.

SUGGESTED ACTIVITY - Monarch Wildlife Cruise from Wellers Rock

An unforgettable experience viewing rare and fascinating wildlife. Board the Monarch Boat and take in the fascinating sight of the Northern Royal Albatross as it comes into nest on the spectacular cliffs of Taiaroa, Otago Peninsula. You'll also see eight other species of birds including sooty shearwaters and petrels as well as sea lions and fur seals and if you're lucky dolphins and whales.

SUGGESTED ACTIVITY - Penguin Tour with The Opera

Learn about the endangered Yellow Eyed Penguin when you visit The Opera - Otago Peninsula Eco Restoration Alliance, a private conservation reserve dedicated to ensuring the survival of this unique species. The project is entirely funded by guided tours which allow the conservation team to engage in habitat restoration, predator control, a research program, and an on-site rehabilitation facility.

On your tour, you will learn about the issues the Yellow Eyed Penguin faces, their life cycle, and how the project is carried out. Your experience will begin in a theatre before moving to the rehabilitation center where penguins may be seen up close. You'll take a short bus trip over to the reserve and be led on foot approx 2km by your guide through a system of covered trenches to view hides that allow access to the living and breeding habitat of this very shy bird without disturbing them. There is also an opportunity to meet other animals that reside in the reserve including fur seals, sea lions, and several species of shore and land birds.

SUGGESTED ACTIVITY - Larnach Castle and Gardens

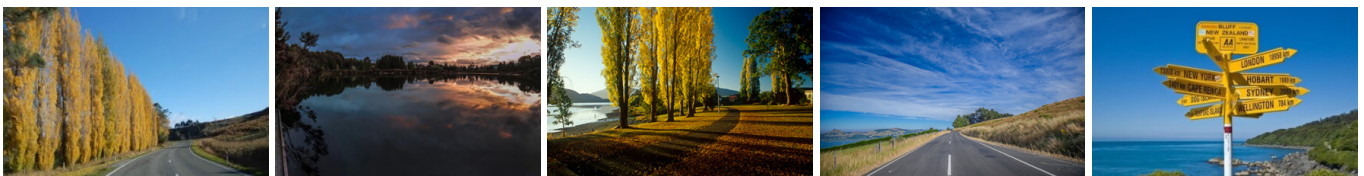
Larnach Castle, New Zealand's only castle, was built in 1871 by politician and merchant William Larnach, a visionary who played a key role in shaping the country's early history. Constructed for his beloved first wife, Eliza, the castle's shell took 200 workmen three years to complete, followed by twelve years of intricate interior craftsmanship. Perched high on the Otago Peninsula, the castle offers stunning views over Dunedin City. Its gardens hold International Garden of Significance status and feature a unique collection of antiques, including a rare nine-piece Totara knot suite. The Ballroom Café provides the perfect spot to relax and enjoy refreshments while reflecting on your visit. The ballroom itself has a fascinating history, having once served as an asylum, an antique sales room, and even a sheep pen before its beautiful restoration. With a self-guided tour, you can explore the castle and gardens at your own pace.

Your accommodation: Bella Vista Dunedin

Bella Vista Dunedin is centrally located and offers clean, modern, self-catering accommodation. The perfect base for exploring Dunedin, enjoy the convenience of being located in close proximity to the Dunedin CBD, shops, entertainment and other activities.



Day 7



Dunedin to Te Anau (via Invercargill)

The drive to Te Anau takes you through classic Southland farming scenery. Head off-the-beaten-track today and follow the coastline instead of the inland route. Go through The Catlins area and be sure to take a detour to Kaka Point to view its majestic cliffs and pounding surf. If time permits, keep driving towards Nugget Point, iconic for its steep headland with a lighthouse perched atop. Continue through Invercargill to Riverton and Colac Bay, and then head north to Manapouri. From here you can embark on a day or overnight cruise to the remote Doubtful Sound, renowned for its natural beauty. Just a short way further will bring you to your lakeside destination of Te Anau, gateway to Fiordland National Park and Milford Sound.

SUGGESTED ACTIVITY - Te Anau Glowworm Caves with RealNZ

Begin your Te Anau Glowworm experience with a scenic cruise across Lake Te Anau on board the luxury catamaran, Luminosa, to the western side of the lake. On arrival, you'll enter the caves through Cavern House, where informative displays detail the history of this 12,000 year old underground network. You'll then explore by limestone pathway while your guide points out hidden whirlpools, sculpted rock formations, and a rushing underground waterfall. See a magical display of thousands of glowworms as you glide through the darkness in a small boat.

Your accommodation: Anchorage Motel, Te Anau

The Anchorage Motel in Te Anau is located just 10 minutes walk from the town centre and 2 minutes from the lakefront. Well equipped 1,2 and 3 bedroom units. The property also offers guest laundry and barbeque area.



Day 8



Te Anau to Milford Sound, returning to Te Anau

The magnificent Milford Road leading to Milford Sound offers some of the most beautiful and iconic scenery in the country. Countless photo opportunities mean this drive should not be rushed. From crystal clear lakes and towering mountains to lush glacier-formed meadows, this area is abundant with picture-perfect scenes. Continue on through the Homer Tunnel, an engineering marvel at 1219 meters long. Arriving in the village of Milford, you will be greeted with an amazing view of Mitre Peak. A day cruise into the heart of the sound is not to be missed. You'll learn about how this magnificent area was formed and experience the wonder of the falls that line the Fjord before back-tracking the way you came.

Milford Sound Cruise with Real NZ - Lunch Included

Get up close and personal with Milford Sound on a leisurely cruise of this spectacular fiord. From thundering waterfalls to sky-high mountains to lush rainforests, Milford has it all. Experience the spray of a waterfall as you cruise close to sheer rock faces. Informative, participative, and relaxed, this is the perfect way to experience Milford Sound to the fullest. It is important you read and understand the risks associated with this activity. For more information, see [here](#).

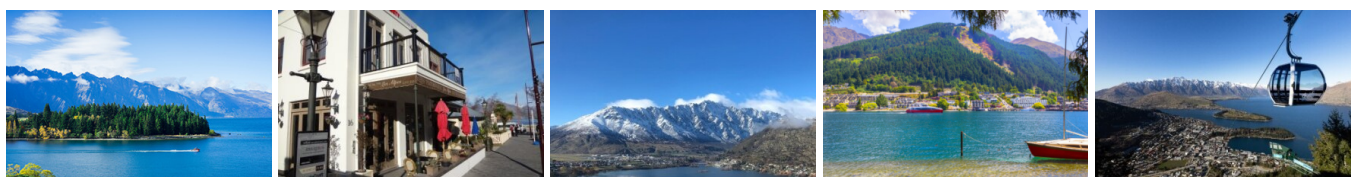
Your accommodation: Anchorage Motel, Te Anau

The Anchorage Motel in Te Anau is located just 10 minutes walk from the town centre and 2 minutes from the lakefront. Well equipped 1,2 and 3 bedroom units. The property also offers guest laundry and barbeque area.

Meals included: Lunch



Day 9



Te Anau to Queenstown

Journey across expansive tussock lands en route to Queenstown. Pass through Mossburn, renowned as the deer capital of New Zealand, and continue through the picturesque Southland countryside. As the road begins to trace the edge of Lake Wakatipu, marvel at the breathtaking views from the Devil's Staircase. Finally, approach Queenstown, the adventure capital of New Zealand, with the Remarkables mountain range standing majestically in the backdrop.

Your accommodation: Blue Peaks Lodge

Blue Peaks Lodge offers well equipped self contained rooms with a fantastic location overlooking Queenstown and is just an easy five minutes walk to the Queenstown lakefront.



Day 10



Explore Queenstown

Well-known as New Zealand's 'adventure capital', Queenstown is home to a range of adventures, from the world's first and most famous bungy jumps to jet boat thrills, white-water rafting, and skydiving. However, Queenstown offers far more than a fast-paced, action-packed holiday. Settled on the shores of beautiful Lake Wakatipu beneath a soaring panorama of the Remarkables Mountain Range, this alpine town is surrounded by many historic, gastronomic, and scenic wonders. Take a stroll through the beautiful lakefront parks and gardens, browse through market stalls on weekends, dine in wonderful al-fresco restaurants, or ride on the 100-year-old historic Steamship - TSS Earnslaw to Walter Peak Station. Take the Queenstown Gondola up to Bob's Peak and soak up the panoramic views of the magnificent lake and mountain ranges. And after all of that, if you do want the adrenaline rush, Queenstown is known for taking your pick from the Shotover Jet, Canyon Swing, Zipline, Luge, or Heli-hike.

SUGGESTED ACTIVITY - Shotover Jet Canyon Jet Boat Ride

Shotover Jet is the only company permitted to operate in the Shotover River Canyons. It's a thrilling ride! Skim past rocky outcrops at close range in your Shotover Jet 'Big Red', as you twist and turn through the narrow canyons at breathtaking speeds. And a major highlight - hold tight for the world-famous Shotover Jet full 360-degree spins! It is important you read and understand the risks associated with this activity. For more information please see [here](#).

SUGGESTED ACTIVITY - Gondola and 3 Luge Rides with Skyline Queenstown

In the heart of Queenstown, located 450 metres above town in the Ben Lomond Scenic Reserve is the Skyline Complex. A gondola ride to the summit makes for awe-inspiring views of the city surround. Arrive at the complex and wander the outside viewing decks for a picture perfect outlook. Then onto the Luge! The 800 metre luge track offers an exhilarating journey through banked corners, tunnels and dippers.

SUGGESTED ACTIVITY - TSS Earnslaw Cruise and Walter Peak Gourmet BBQ Dinner

Enjoy a quintessential Kiwi experience, a delicious gourmet BBQ buffet meal, and a farm demonstration in a stunning lakeside setting. Take in the stunning views of Lake Wakatipu and its surroundings as you cruise across the lake to the historic Walter Peak high country farm aboard the TSS Earnslaw Steamship. Enjoy the ambiance of the heart of the stately homestead while your Colonel's Homestead Restaurant chef prepares a gourmet BBQ dinner. Your seasonal menu includes an extensive selection of local New Zealand produce, including succulent meats and a selection of delicious vegetables and salads. Complete your meal with your choice of delicious desserts, or New Zealand cheeses. After dinner, watch the farm dogs in action with a sheep-herding demonstration and say hello to the other farm animals. Finally, cruise home under the southern stars and enjoy the fresh night air as the lights of Queenstown draw ever closer.

Your accommodation: Blue Peaks Lodge

Blue Peaks Lodge offers well equipped self contained rooms with a fantastic location overlooking Queenstown and is just an easy five minutes walk to the Queenstown lakefront.



Day 11



Queenstown to Franz Josef Glacier via Wānaka

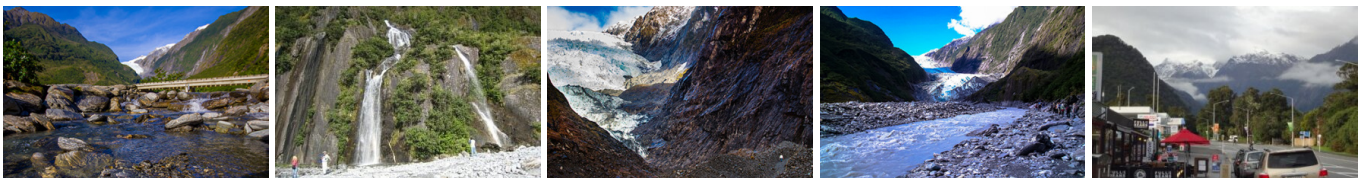
From Queenstown you'll cross the Crown Range, the highest sealed road in New Zealand to arrive in the Alpine town of Wānaka, gateway to Mt Aspiring National Park. Skirting the shores of both Lake Wanaka and Hawea, you will enter the small town of Makarora. Stop at Blue Pools for a 1-hour return walk through the native beech forest to a glacier-fed swimming hole. Continue on through the remote seaside settlement of Haast before heading up the wild West Coast highway you pass through ancient temperate rainforests while getting sneak peeks of the wild coast beaches occasionally. Keep heading North and be sure to enjoy the view of the ever-changing towering snowcapped Southern Alps Mountain Range. Fox Glacier welcomes you first, then comes your destination for the night Franz Josef township.

Your accommodation: Punga Grove Motel & Suites

Punga Grove is right in the heart of Franz Josef Glacier village stylish accommodation in a beautiful rainforest setting.



Day 12



Explore Franz Josef

Franz Josef is a small yet lively town in the heart of New Zealand's West Coast, best known for its spectacular 12 km-long glacier. The township is surrounded by lush, rainforest-clad mountains and has a vibrant atmosphere with plenty to explore. A variety of scenic walking trails offer incredible views of the glacier, but for a truly up-close experience, a licensed helicopter tour is the only way to set foot on the ice. Beyond the glacier, unwind in the rejuvenating Hot Pools or visit the West Coast Wildlife Centre to spot rare kiwi birds. If you're in the mood for a more relaxed day, the township is home to charming souvenir and gift shops, as well as great dining spots like SnakeBite Brewery and King Tiger. Whether you're chasing adventure or relaxation, Franz Josef is a stunning blend of wild beauty and welcoming hospitality.

SUGGESTED ACTIVITY - Franz Josef Nature Tour with Glacier Valley Eco Tours

Nestled in thick historic West Coast forest and a stone's throw from wild black sand beaches, this is one of the world's most unusual glaciers. Beautiful blue skies or magical misty rain, whatever the weather - you will feel like you are in Narnia or LOTR.

With easy walking at your pace, information on glaciology, geology, geomorphology, flora and fauna, local legends, history, and small guided groups with fantastic guides, you will experience this glacier in style and in the best hands with the only local company. Wander past glacier rivers and streams and through beautiful podocarp forest; discover hidden natural treasures such as native snails, wild native mushrooms, and dozens of species of native orchids; listen to native bird song and waterfalls; see if you can spot a Chamois or a Tahr on the huge snow-capped mountains above while drinking a cup of tea and talking one-on-one with your guide.

SUGGESTED ACTIVITY - Twin Glacier Scenic Helicopter Flight with The Helicopter Line

A spectacular scenic flight soaring over two of New Zealand's most famous glaciers, Fox and Franz Josef. Landing at the head of one and view the incredible sight of this frozen river as it winds its way through ancient carved valleys. It is important to read and understand the risks associated with this activity. A full risk disclosure can be found [here](#).

SUGGESTED ACTIVITY - Okarito Lagoon Guided Kayak Trip (2 hours) with Okarito Kayaks

Kayaking is by far the best way to enjoy the flora, fauna, and scenic grandeur of New Zealand's largest unmodified coastal wetland. Previous experience is not necessary. Okarito Lagoon covers more than 3240 hectares of shallow open water and is well known for its outstanding bird life, including white heron and royal spoonbill. Exploring the open water and river channels that lead you deep into the heart of the rainforest is like stepping back in time to pre-European conditions and on a clear day you enjoy fantastic views of Mt. Cook and the Southern Alps. Your guide will take you to their favourite spots where you'll discover the flora, fauna, and history of the lagoon.

Your accommodation: Punga Grove Motel & Suites

Punga Grove is right in the heart of Franz Josef Glacier village stylish accommodation in a beautiful rainforest setting.



Day 13



Franz Josef to Arthur's Pass National Park

Driving north on State Highway 6 you pass through many small West Coast towns. Hari Hari is the township that Guy Menzies decided to land in (or rather crash land) as he became the first person to fly solo across the Tasman. Ross is the site of an old gold mining town and some of the old buildings remain. You can even pan for gold. The craft and gift stores in Hokitika are excellent with a great range of locally made items and if you want to explore further here then the Hokitika Gorge is worthy of a 50 minute detour.

State Highway 73 is the main road between the West Coast and Christchurch and the scenery is spectacular, even in the rain and there is a pretty good chance of rain in the high alpine mountains. With hundreds of waterfalls cascading down the bush-clad hillsides, it's not a road to be rushed. Originally the road was a pass used by Maori as they made their seasonal passage to look for the greenstone abundant in the West Coast mountains. When the gold rush hit the West Coast in the late 1800's then a road was quickly developed and not soon after the train.

Today the main use for the track is transporting coal to Lyttelton Harbour but once a day the now world famous TranzAlpine Scenic Train takes a few hundred tourists and visitors between the two oceans.

The Otira Gorge on the Western side of Arthur's Pass features a remarkable piece of engineering with the road passing high on a viaduct through this large valley. This is a recent addition to the route as the old road was washed away in a rock fall a few years ago. There are numerous lookout points giving great views of the valley and its engineering feat but watch out for the local residents, the kea. this bird is the world's only alpine parrot and can be extremely cheeky.

Arthur's Pass Township is a bustling place in the peak season with many walkers and adventurers using it as a base for the forays into the mountains of Arthur's pass National Park. The Department of Conservation centre here has an excellent display of the local history and is a great source of information for the many short walks in the area.

Walking tracks in Arthurs Pass National Park

Within Arthur's Pass there are many short walks to suit all ages and abilities. Located in the Arthur's Pass Village is a Department of Conservation information centre where you can get updates on track conditions and track suitability as well as learn about the natural history of the area and its people.

Listed below is a selection of short walks.

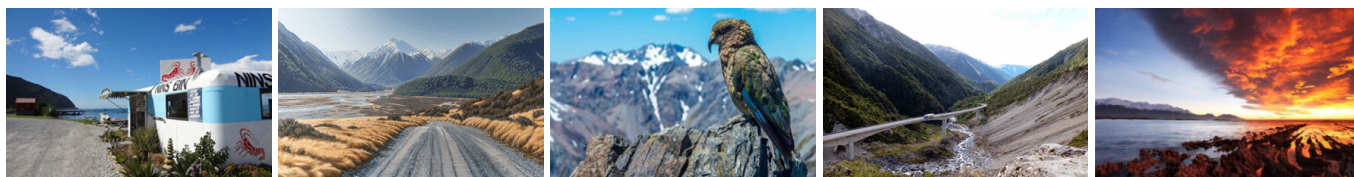
1. Millennium Walk - Time: 10 minutes return
2. Devils Punchbowl Waterfall Walk - Time: One hour return
3. Arthur's Pass Walking Track - Time: One hour 20 minutes (one way)
4. Dobson Nature Walk - Time: 30 minutes return
5. Old Coach Road Walk - Time: 30 minutes return
6. Cockayne Nature Walk - Time: 30 minutes return

Your accommodation: Arthurs Pass Alpine Motel

Located in the main part of Arthur's Pass, this is the ideal location to enjoy and explore Arthur's Pass National Park. Close to cafes and the visitor centre, your accommodation is in comfortable, self-contained units.



Day 14



Arthur's Pass to Kaikoura

Travelling from the Southern Alps to the Coast, this drive offers spectacular views of braided river valleys. You'll travel through Castle Hill Scenic Reserve, dotted with remarkable rocky outcrops, popular for hiking.

Descending onto the Canterbury Plains, you'll travel through the rich farmland surrounding Christchurch before turning North through the small towns of Rangiora and Oxford. You'll then travel on State Highway 1 through the Waipara Valley. If you have plenty of time be sure to stop at Hanmer Springs for a soak in the hot mineral pools.

The road hugs the coast for the final stretch of this drive, before arriving at your destination, Kaikoura. Keep a lookout for dolphins as they are often seen swimming just off the coastline as well as New Zealand fur seals basking by the roadside.

Your accommodation: Lobster Inn

Lobster Inn, Kaikoura Motel. This family-operated motel has become a favorite for many visitors to Kaikoura, offering modern, self-sufficient rooms just minutes from the town center and all the attractions. Overlooking the Kaikoura Township, coast, and mountains, it provides a picturesque and convenient stay.



Day 15



Kaikōura

Kaikōura is a breathtaking seaside town teeming with marine life and natural beauty. As you wander through this coastal paradise, you'll be enveloped by the fresh sea breeze and the sounds of the ocean. Begin your adventure by observing the lively fur seal colony at the tip of the peninsula. For an unforgettable experience, board a boat to go whale watching and marvel at the majestic whales that call these waters home year-round. If you're feeling adventurous, take the plunge and swim with the playful dusky dolphins in their natural habitat. For bird enthusiasts, Kaikōura offers the chance to get up close with the native albatross, an awe-inspiring sight. The town is rich with attractions, walking tracks, and activities for every visitor. A walk around the Kaikōura Peninsula is a must, where you can explore tide pools teeming with marine life, observe sea creatures basking on the rocks, and watch seabirds soaring above. Be sure to keep a respectful distance from the sleeping sea lions you might encounter along the way. Ohau Point is another highlight, where you can watch fur seals frolic in their natural environment. To delve into Kaikōura's fascinating history, visit Fyfe House. This historic whaler's cottage offers a glimpse into the town's whaling past and its evolution over the years. No trip to Kaikōura is complete without sampling the local seafood. Renowned for having some of the best fish and chips in the country, Kaikōura's eateries serve fresh catches straight from the morning's haul, ensuring a delicious and authentic dining experience. If you need a break from the action, unwind at Lavendyl Lavender Farm. Stroll through the fragrant lavender fields, relax in the serene atmosphere, and browse the gift shop for a variety of lavender products. Kaikōura seamlessly blends adventure, history, and relaxation, making it a perfect destination for travellers seeking a unique and enriching experience.

Ocean's Cabin with Whale Watch Kaikōura

Experience New Zealand's only marine-based whale-watching company. Whale Watch Kaikōura offers a once-in-a-lifetime, up-close encounter with the giant Sperm Whale. You are also likely to encounter New Zealand fur seals, dolphins, and albatross. Depending on the season you may also see Pilot, Blue, and Southern Right whales as well as migrating humpbacks. Often orcas can be spotted here and the world's smallest dolphin, the Hector's, occasionally makes an appearance.

Your accommodation: Lobster Inn

Lobster Inn, Kaikoura Motel. This family-operated motel has become a favorite for many visitors to Kaikoura, offering modern, self-sufficient rooms just minutes from the town center and all the attractions. Overlooking the Kaikoura Township, coast, and mountains, it provides a picturesque and convenient stay.



Day 16



Kaikoura to Blenheim

Heading north from Kaikoura, the road hugs the shore for approximately 50 kilometres and offers many opportunities to view the native wildlife such as seabirds and New Zealand fur seals. One of the best seal watching locations is Ohau Point (25km north of Kaikoura), where you can observe the adults on the shoreline and the pups frolicking in the waterfall, just a short walk from the road (signposted). As you drive you will have turquoise waters of the South Pacific Ocean to your east and to the west the towering Kaikoura Ranges. Crossing the dry hills of the Marlborough ranges you head towards Marlborough, New Zealand's largest wine producing region. Blenheim sits right at the heart of Marlborough and is ideally located to enjoy an afternoon sampling the local produce. A great way to do this is to take a guided wine tour with Sounds Connection Wine Tours.

SUGGESTED ACTIVITY - Half Day Marlborough Wine Tour with Sounds Connection

An afternoon among the vines! Be immersed in the Marlborough wine country with the Sounds Connection half day wine tour. Get collected from your accommodation and taken through three or four hand-picked wineries to taste the award-winning produce this region is known for. Hear about the history of winemaking in Marlborough as well as learning the unique processes each winery goes through.

Your accommodation: Blenheim Palms Motel

Located 100 m from the central shops and eateries, the Blenheim Palms Motel offers tasteful individually designed apartment-styled rooms.



Day 17



Blenheim to Abel Tasman National Park via Queen Charlotte Drive

Take a short drive to the small port of Picton where the Interislander ferry connects with Wellington. A bustling seaside destination, Picton is well equipped with shops, cafes and is also the starting point for the famous Queen Charlotte Walk. You'll travel along Queen Charlotte Drive, traversing the length of the Marlborough Sounds coastline. Magnificent views are abundant so be sure to make time to stop and enjoy the scenery as you go.

Continue through the small port town of Havelock, home to a variety of cafes and restaurants. The highway between Nelson and Picton crosses the pelorus river, and at this junction you'll find the famous pelorus bridge. From here there are a number of forest walks, the most popular a 30 minute loop through beech, rimu, and totara forest. Traverse Tasman Bay passing through Motueka to arrive on the outskirts of Abel Tasman National Park.

Your accommodation: Ocean View Chalets

The Ocean View Chalets are situated on a 50-acre farmlet, slightly elevated and nestled along the bush line with panoramic sea views. Great access the National Park and close to the friendly Marahau village.



Day 18



Abel Tasman National Park

Experience the golden beauty of Abel Tasman National Park, a coastal paradise renowned for its spectacular hiking track, pristine golden beaches, secluded inlets, and private lagoons. With its mild climate and stunning natural environment, it's a cherished destination for New Zealanders nationwide. Why not enjoy a scenic cruise through the Sounds or take a kayaking tour around its many sheltered bays? Relax to the melodious birdsong and get up close to some of the park's many animal residents, including native bats, geckos, birds, marine mammals, fur seals, and dolphins.

SUGGESTED ACTIVITY - Seals, Beach Cruise and Walk

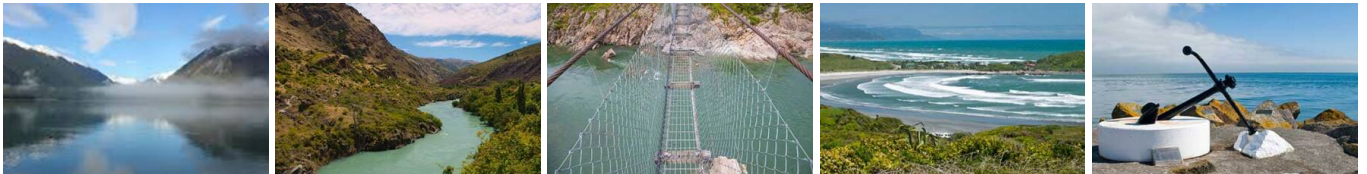
Experience the best of Abel Tasman on this combined beach cruise and walk tour. Cruise into the Tonga Island Marine Reserve and pause to watch the antics of the Resident Fur Seal Colony. After landing at the historic Tonga Quarry Beach, take a two hour, fifteen minute walk over forested land and around the spectacular Bark Bay Estuary, renowned for its cascading waterfalls. Rejoin the cruise at the sheltered golden cove on Medlands Beach.

Your accommodation: Ocean View Chalets

The Ocean View Chalets are situated on a 50-acre farmlet, slightly elevated and nestled along the bush line with panoramic sea views. Great access the National Park and close to the friendly Marahau village.



Day 19



Marahau to Westport

Today travel along the Buller Gorge home to spectacular scenery. Head through the sleepy town of Murchison, a great place to stop for lunch then continue on to Inangahua, the first major town in the region. You'll then come to Whites Creek - where New Zealand's longest swing bridge is located. As you cross the river take in the magnificent views of the gorge before drive a short way further to arrive in Westport, the largest town the Northern West Coast.

Your accommodation: Buller Bridge Motel

Ideally located in Westport this well equipped motel is adjacent to the Buller River and Millennium Walkway but also just a few minutes walk from the town centre



Day 20



Westport to Greymouth

Cape Foulwind just south of Westport is home to a seal colony and the short walk provides some spectacular scenery. The spectacular West Coast coastline guides you to Paparoa National Park and to Punakaiki. A stop at the pancake rocks is a highlight of this drive so allow plenty of time to walk the paths and explore the formations.

Greymouth sits on the Grey River almost at the western end of State Highway 73. It's the largest town on the coast and as such is the commercial centre. A fine small town centre with some interesting buildings makes it a pleasant place to stroll or if you are feeling a little more adventurous then there is almost every activity you can think of available here. In the centre of town you will also find the Monteith's brewery and a tour is highly worthwhile. Greymouth is also where the TranzAlpine train arrives and departs. Just south of Greymouth is Shantytown a replica gold rush town with lots of great displays from yesteryear.

TranzAlpine Scenic Train: Greymouth to Christchurch

Considered one of the world's great train journeys, the TranzAlpine Scenic Train takes you from Greymouth to Christchurch. Travel across the South Island from the west to the east coast through Arthur's Pass National Park. From the comfort of your carriage see lush beech forest, deep river valleys and the spectacular peaks of the Southern Alps. Descend to the windswept Canterbury Plains before arriving in the city of Christchurch.

Shared Transfer from Christchurch Train Station to Christchurch CBD Accommodation with Christchurch Touring Company

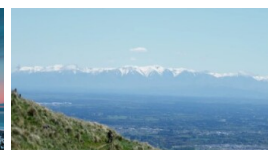
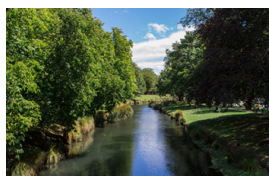
On arrival at the Christchurch railway station, you will be met by a driver and transferred to your Christchurch accommodation.

Your accommodation: Quest on Cambridge

Quest on Cambridge serviced apartment-style hotel rooms offer guests a relaxed and comfortable Christchurch accommodation experience. Each room has an open-plan living area, a fully equipped kitchen, and natural light. Quest on Cambridge is a short walk from the south shopping centre and to the Botanic Gardens.



Day 21



Private Transfer from Christchurch Accommodation to Christchurch International Airport with Christchurch Touring Company

A private transfer will collect you from your accommodation and transfer you to Christchurch International Airport in time for your departing flight.

Farewell from Aotearoa / New Zealand

Bid farewell to Aotearoa / New Zealand, taking with you unforgettable memories of its breathtaking landscapes and incredible adventures. In Māori, it is said mā te wā, which is not goodbye, it is see you soon!

Tour details

Departures:	Daily
Tour type:	South Island Self Drive
Starts:	Christchurch
Finishes:	Christchurch
Tour length:	21
Accommodation:	Motels
Car/transport type:	

Accommodation summary

Day 1	Quest on Cambridge
Day 2	Quest on Cambridge
Day 3	Criterion Motel
Day 4	Distinction MacKenzie Country Hotel, Twizel
Day 5	Bella Vista Dunedin
Day 6	Bella Vista Dunedin
Day 7	Anchorage Motel, Te Anau
Day 8	Anchorage Motel, Te Anau
Day 9	Blue Peaks Lodge
Day 10	Blue Peaks Lodge
Day 11	Punga Grove Motel & Suites
Day 12	Punga Grove Motel & Suites
Day 13	Arthurs Pass Alpine Motel
Day 14	Lobster Inn
Day 15	Lobster Inn
Day 16	Blenheim Palms Motel
Day 17	Ocean View Chalets
Day 18	Ocean View Chalets
Day 19	Buller Bridge Motel
Day 20	Quest on Cambridge