



Journey from Queenstown to Christchurch, with Glaciers and TranzAlpine Train

From Queenstown you'll travel via the Kawarau Gorge and spectacular Haast Pass to the pristine wilderness of the West Coast. With 2 nights in Franz Josef you'll have time to enjoy the lush forest and glacier landscape, or even a glacier adventure of your choosing (scenic flight, anybody?) On day three, depart Franz Josef and continue north on the rugged West Coast road to Greymouth, where you'll catch the world renowned TranzAlpine Scenic Train to Christchurch.



Starts in: Queenstown
Finishes in: Christchurch
Length: 3days / 2nights
Accommodation: Motels
Can be customised: Yes

This itinerary can be customised to suit you perfectly. We can add more days, remove days, change accommodations, mix it up, add activities to suit your interests or simply design and create something from scratch. Call us today to get your custom New Zealand itinerary underway.



Inclusions:

- Includes: All coach transport
- Includes: All pick ups/drop offs at destinations
- Includes: Afterhours emergency support while touring
- Included activity: Queenstown to Franz Josef with Gray Line / GreatSights
- Included activity: Glacier Valley Shuttle
- Included activity: The Visitor Promise - Cultural Learning Course
- Included activity: Franz Josef to Greymouth Train Station with Gray Line / GreatSights
- Included activity: TranzAlpine Scenic Train: Greymouth to Christchurch



Day 1



Queenstown to Franz Josef with Gray Line / GreatSights

Leaving Queenstown early, travel by coach through the stunning scenery of the South Island. Your driver-guide will provide entertaining commentary and point out sites of interest as you pass by the crystal-clear waters of Lake Dunstan, Lake Wanaka and Lake Hawea. After a morning tea break (at own expense) in Makarora on the border of Mount Aspiring World Heritage Park, you'll travel through the Haast Pass, journeying through native beech forest and over the Southern Alps, before emerging on the West Coast. This remote area has a ruggedly beautiful landscape of vast rainforests, gushing waterfalls and snow-capped mountains. Skirt the coast and see waves crashing on rocky beaches where you will stop for a comfort stop at Bruce Bay. You will arrive in the afternoon at the small village of Franz Josef. From here you can explore the world famous Franz Josef Glacier.

Glacier Valley Shuttle

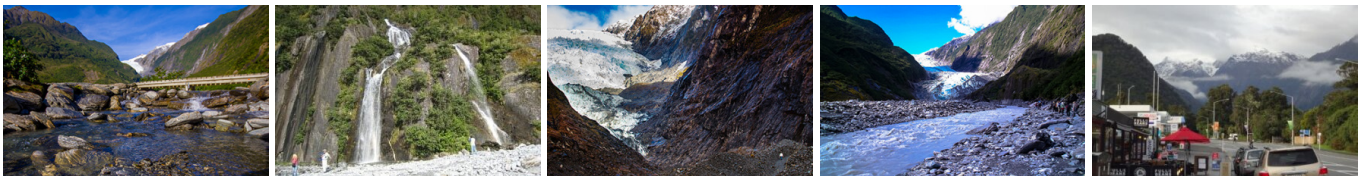
You'll be transferred up the Franz Josef Valley to the road end, where you'll have the opportunity to walk to a viewing platform with views of the glacier. Alternatively, you can enjoy one of the other scenic short walks in the area.

Your accommodation: Punga Grove Motel & Suites

Punga Grove is right in the heart of Franz Josef Glacier village stylish accommodation in a beautiful rainforest setting.



Day 2



Explore Franz Josef

Franz Josef is a small yet lively town in the heart of New Zealand's West Coast, best known for its spectacular 12 km-long glacier. The township is surrounded by lush, rainforest-clad mountains and has a vibrant atmosphere with plenty to explore. A variety of scenic walking trails offer incredible views of the glacier, but for a truly up-close experience, a licensed helicopter tour is the only way to set foot on the ice. Beyond the glacier, unwind in the rejuvenating Hot Pools or visit the West Coast Wildlife Centre to spot rare kiwi birds. If you're in the mood for a more relaxed day, the township is home to charming souvenir and gift shops, as well as great dining spots like SnakeBite Brewery and King Tiger. Whether you're chasing adventure or relaxation, Franz Josef is a stunning blend of wild beauty and welcoming hospitality.

SUGGESTED ACTIVITY - Twin Glacier Scenic Helicopter Flight with The Helicopter Line

A spectacular scenic flight soaring over two of New Zealand's most famous glaciers, Fox and Franz Josef. Landing at the head of one and view the incredible sight of this frozen river as it winds its way through ancient carved valleys. It is important to read and understand the risks associated with this activity. A full risk disclosure can be found [here](#).

SUGGESTED ACTIVITY - Off-Road Quad Bike Adventure Tour with Franz Josef Wilderness Tours

Experience an unforgettable off-road journey through lush rainforest, riverbeds, and breathtaking glacier landscapes, including views of the Southern Alps and Franz Josef Glacier. With expert guides providing gear, training, and fascinating Māori legends, you'll enjoy an exciting quad bike or buggy ride tailored to all skill levels. Choose from single, double, or family-friendly three-seater buggies for an adventure perfect for everyone. It is important you read and understand the risks associated with this activity. For more information please see [here](#).

SUGGESTED ACTIVITY - Half Day Lake Matheson Eco Tour

Nature has combined three ingredients to create the stunning vista of Lake Matheson. Explore the crystal clear waters and learn about the flora, fauna, glaciation, geology, and natural history of this beautiful area. Enjoy the stunning Lake Matheson, where you'll walk the 3km gentle track that follows the lake edge. Along the way, you'll take in the reflective qualities of the lake and the surrounding lush rainforest, which make for fantastic photo opportunities.

Your accommodation: Punga Grove Motel & Suites

Punga Grove is right in the heart of Franz Josef Glacier village stylish accommodation in a beautiful rainforest setting.



Day 3



Franz Josef to Greymouth Train Station with Gray Line / GreatSights

This morning travel north through the small townships of Whataroa and stop at Harihari for a morning tea stop (at own expense). Continue through the township of Ross, which in the late 1800s was the centre of one of New Zealand's richest alluvial goldfields. In 1903 the largest gold nugget ever found in New Zealand was discovered at Jones Creek, not far from the town centre. It weighed 2807 grams. The New Zealand Government later purchased the nugget and presented it as a coronation gift to King George V. On arrival in Hokitika there is time to purchase lunch (at own expense) and explore the town centre. Hokitika is the administrative and commercial centre for this part of Westland. The major primary industry is timber milling. Dairy and sheep farming, commercial fishing, white baiting and eel processing being the other major industries. Continue onto Greymouth Railway Station from where you catch the world famous TranzAlpine train across the Southern Alps to Christchurch.

TranzAlpine Scenic Train: Greymouth to Christchurch

Considered one of the world's great train journeys, the TranzAlpine Scenic Train takes you from Greymouth to Christchurch. Travel across the South Island from the west to the east coast through Arthur's Pass National Park. From the comfort of your carriage see lush beech forest, deep river valleys and the spectacular peaks of the Southern Alps. Descend to the windswept Canterbury Plains before arriving in the city of Christchurch.

Tour details

Departures:	Daily
Tour type:	Independant Bus & Coach
Starts:	Queenstown
Finishes:	Christchurch
Tour length:	3
Accommodation:	Motels
Car/transport type:	

Accommodation summary

Day 1	Punga Grove Motel & Suites
Day 2	Punga Grove Motel & Suites