



Auckland to Wellington Highlights

Journey from Auckland's vibrant harbour city to the geothermal heart of Rotorua, the art deco streets of Napier, and on to the creative capital of Wellington. Along the way you'll enjoy boutique-style stays, cultural encounters, and the chance to explore some of the North Island's most iconic landscapes and experiences.

Starts in: Auckland
Finishes in: Wellington
Length: 6days / 5nights
Accommodation: Boutique Lodges & Hotels
Can be customised: Yes

This itinerary can be customised to suit you perfectly. We can add more days, remove days, change accommodations, mix it up, add activities to suit your interests or simply design and create something from scratch. Call us today to get your custom New Zealand itinerary underway.



Inclusions:

Includes: Late model rental cars
Includes: Fully inclusive rental car insurance (excess may apply)
Includes: Unlimited kms
Includes: Afterhours emergency support while touring
Included activity: Private Transfer Auckland Airport to your Auckland Accommodation with Tourcorp
Included activity: Electronic Travel Guide and In-Country Support App
Included activity: The Visitor Promise - Cultural Learning Course
Included activity: Glow Worm Caves Tour with Discover Waitomo
Included activity: Te Pā Tū Evening Māori Cultural Experience - Dinner Included
Included activity: Wai-O-Tapu Thermal Wonderland
5 breakfasts

Day 1



Private Transfer Auckland Airport to your Auckland Accommodation with Tourcorp

You will be met at the Auckland airport by the driver and transferred to your Auckland accommodation.

Welcome to Auckland

Welcome to Auckland, known in Māori as Tāmaki Makaurau. Auckland is New Zealand's vibrant "City of Sails," and the country's largest metropolitan area. Nestled between the Pacific Ocean and the Tasman Sea. Surrounded by native bush, lush rainforests, and pristine beaches, Auckland is a haven for both adventurers and urban explorers. Wander through world-class museums and galleries in the city centre or enjoy a peaceful retreat at the Auckland Gardens, where stunning landscapes showcase New Zealand's diverse flora. Stroll along the lively waterfront to savour fresh seafood and international cuisine at Viaduct restaurants. For an unforgettable perspective, ascend the iconic SkyTower, New Zealand's tallest structure, and take in panoramic views of the city and its picturesque islands.

SUGGESTED ACTIVITY - Harbour Sailing Cruise with Explore

Enjoy the City of Sails from the water on a relaxed harbour sailing yacht. This cruise offers a uniquely local experience experiencing the harbour under sail with a small vessel with an intimate and engaging atmosphere. View the stunning city sights while sailing on the inner Waitemata Harbour. Sail where the wind takes us while enjoying Auckland's city highlights; including sailing under the Harbour Bridge and other well-known landmarks along the harbour's edge. The crew's local knowledge will give you the best harbour sailing experience Auckland has to offer. Become the crew and help participate with the sailing experience take the helm while you carve through the water, or if you prefer just sit back and relax above deck.

SUGGESTED ACTIVITY - Ferry from Auckland to Rangitoto Island and return with Fullers

A short cruise through the Waitemata Harbour to the Hauraki Gulf delivers you to Rangitoto Island. Rangitoto Island is the largest and youngest of the many volcanoes that make up the Auckland volcanic field. It erupted around 600 years ago, but is extinct now and safe to explore. During your cruise to and from the island enjoy fantastic views of Rangitoto Island and Auckland. On reaching the island you can walk to the summit (1 hour direct) for great views of the Hauraki Gulf and over Waitemata Harbour looking back towards Auckland. There are a number of walking trails to explore this volcanic island, further information can be found at the Department of Conservation website.

Your accommodation: Hotel Grand Chancellor Auckland

Discover our distinctive hotel at the corner of Hobson & Fanshawe Streets in downtown Auckland City, across from the renowned Viaduct Harbour. Enjoy complimentary Wi-Fi, a well-equipped gym, and a heated indoor pool. After a day of exploring, unwind in our spa and sauna for a refreshing and revitalizing experience.



Day 2



Collect Rental Car

This tour's from price includes an intermediate-sized vehicle, setting you up for comfortable travels. Yet, we understand every adventure is unique! Feel free to select the perfect wheels from our incredible collection of rental cars, spanning from economy hatchbacks to premium SUVs.

Auckland to Rotorua

Your drive south from Auckland begins by crossing the Bombay Hills, which mark the boundary of the greater Auckland area, before leading you into the rich, sprawling farmland of the Waikato region. The drive takes approximately 2.5 hours non-stop, but we recommend allowing 3 hours for a relaxed journey. For a fantastic leg-stretching stop, you may consider a slight detour into Hamilton to visit the renowned Hamilton Gardens (known for its amazing themed garden collection). Alternatively, the quirky small town of Tirau, famous for its buildings shaped like a giant sheep and sheepdog, is right on your main route and makes a quick and fun photo stop. As you continue south, the scenery transitions, and telltale signs of steam and other geothermal activity will signal your arrival into the fascinating thermal and cultural hub of Rotorua.

SUGGESTED ACTIVITY - Hobbiton Movie Set Tour from Shires Rest

In the heart of New Zealand, you can step into the lush pastures of the Shire with a guided tour of Hobbiton, as featured in The Lord of the Rings and The Hobbit Trilogies. Hobbiton is located just outside of Matamata in the heart of the lush Waikato farming region. Here you can visit such iconic Hobbit locations as Hobbit Holes, the Green Dragon Inn, the Mill and the Party Tree with a guide sharing behind-the-scenes tales and insight into the making of the films. Spend time wandering through Bagshot Row before being led inside a Hobbit Hole to view the detailed interior, designed to provide an authentic glimpse into the dwelling of a Hobbit.

Glow Worm Caves Tour with Discover Waitomo

Explore a 30 million year old cave network spread across three levels. You'll travel deep underground through the limestone caves viewing stalactites and stalagmites as well as hearing about the caves historical and geological significance. You'll then hop into a boat and glide silently through the glow worm grotto - a galaxy of tiny living lights.

Your accommodation: Black Swan Lakeside Boutique Hotel

Black Swan Lakeside Boutique Hotel combines old world charm with a modern funky twist. Set in one acre of outstanding gardens on the edge of Lake Rotorua, the lodge is an intimate retreat just a short drive from the centre of Rotorua.

Meals included: Breakfast



Day 3



Explore Rotorua

Peppered with natural hot springs, boiling mud pools and steaming geysers, Rotorua sits within one of the world's most active volcanic regions. Geothermal landmarks aside, this city of sulphur has a rich indigenous history. Home to several prominent Māori tribes, a visit to one of the Māori experiences should be high on your agenda, learn about the special meaning of pounamu-Greenstone with Mountain Jade, explore the geysers and arts of Te Puia or immerse in an evening with Te Pā Tū. An excursion to one of the area's wellness spas is also a must! Try the Polynesian Spa for an invigorating soak in its natural mineral hot springs, Wai Ariki offers an indulging and unwinding restorative journey or pay a quick visit to Secret Spot for a soak and a delicious smash burger! If it is a thrill you are looking for, spike your adrenaline at Rotorua Canopy Tours, soaring above the ancient native forest below. Alternatively, head up the Skyline Rotorua Gondola for soaring lake views, and ride the luge at night for an extra thrill. Make the most of your time in Rotorua with an excursion through the Wai-O-Tapu Thermal Wonderland, one of the area's most colourful volcanic attractions. Whatever you are after, Rotorua is almost certain to have it!

SUGGESTED ACTIVITY - National Kiwi Hatchery Experience

The National Kiwi Hatchery Experience is a special opportunity to gain insight into and view this highly regarded conservation centre. Developed with the visitor experience in mind, the hatchery boasts special viewing opportunities and is hosted by kiwi expert guides who ensure guests leave fully informed and all questions answered. Learn all about New Zealand's intriguing national icon and the efforts of the kiwi husbandry team, see and discover what it takes to hatch and rare chicks, and if you're lucky see baby chicks in person!

Te Pā Tū Evening Māori Cultural Experience - Dinner Included

New Zealand's Most Awarded Cultural Attraction, presenting Te Pā Tū. Feast on song, drama, tradition, and divine seasonal kai (cuisine) within the forest Pā (village) blanketed by towering Tawa trees, blazing bonfires, and a forest-formed amphitheatre. Te Pā Tū shares Māori history, traditions, and cultural aspirations across 4-hours of celebration and feasting. These events change with each season of the Maramataka, the Māori lunar calendar.

Wai-O-Tapu Thermal Wonderland

Wai-O-Tapu Thermal Wonderland is a spectacular showcase of New Zealand's colourful and unique geothermal elements sculpted by thousands of years of volcanic activity. You will be introduced to a diversely different natural landscape, extending over 18-sq. km. Enjoy viewing the volcanic features as you walk at your own pace along well-defined tracks. Relax in the first-class Visitor Centre, home to the Gift Shop and Café facilities. Visit the Mud Pool, the largest in New Zealand, it was originally the site of a large mud volcano which was destroyed through erosion in the 1920s. See the history and beauty of the Lady Knox Geyser at 10:15 am every day where a daily eruption happens of up to 20 metres.

SUGGESTED ACTIVITY - Relaxation and Tranquility Experience with Wai Ariki Hot Springs and Spa

Enjoy five hours of luxury and wellness with this carefully thought-out therapeutic pilgrimage experience. Embark on a transformative journey of rejuvenation that draws on the Ngati Whakaue practices and culture, where ancestral traditions converge with this soothing therapeutic experience. Begin your experience with the Restorative Journey (Wai Whakaora) where you will undertake the benefits of the natural environment awakening your senses through hot and cold experiences including the geothermal mud lounge, waterfall showers, geothermal pools, steam room and the Tongariro fire and ice caves. Enjoy a 60 minute long traditional Maori massage before enjoying a Manuka Nourishing Facial that revitalises the skin with its antibacterial and hydrating properties. You will conclude your experience with another bathe before luxuriating into your relaxation time complete with grazing platter and non alcoholic beverages.

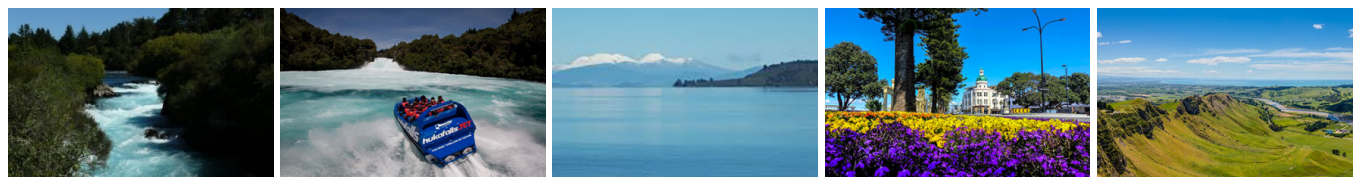
Your accommodation: Black Swan Lakeside Boutique Hotel

Black Swan Lakeside Boutique Hotel combines old world charm with a modern funky twist. Set in one acre of outstanding gardens on the edge of Lake Rotorua, the lodge is an intimate retreat just a short drive from the centre of Rotorua.

Meals included: Breakfast



Day 4



Rotorua to Napier via Taupō

This drive will take you through the thermal region just south of Rotorua. Home to a plethora of unique geothermal attractions including boiling mud pits, natural hot springs and steaming geysers, this area is a must do before you move on to Napier. Notable attractions are Wai-O-Tapu, Waimangu and Craters of the Moon. Continue on to Taupō and marvel at the lake, a giant crater formed following a volcanic eruption in the year 180 CE. As you approach the town, be sure to stop at Huka Falls to view the spectacular sight of hundreds of cubic metres of water spilling every second down the narrow 11 metre drop. For an extra thrill take a jet-boat ride at the base of the falls. Leaving Taupō, follow the road as it climbs the rugged Ahimanawa Range before descending back down the Pacific Coast to art deco coastal township of Napier.

SUGGESTED ACTIVITY - Hawkes Bay Wine and Dine Tour with Grape Escape

Experience a fun-filled Grape Escape wine and dine tour in the sun driving through absolutely stunning scenery. Meet like-minded people and share an appreciation of this region's fantastic wine. We visit four to five boutique wineries. Later, we enjoy a light cheese platter on the grounds of Ngatarawa or Sileni, weather dependent. You will taste around 30 different wines along with the main varieties, including Merlot, Syrah, Chardonnay, Sauvignon Blanc, Pinot Gris, Viognier, and lesser-known aromatics such as Cabernet Franc, Gewurztraminer, and Riesling.

SUGGESTED ACTIVITY - Native Icons Guided Tour in National Aquarium of New Zealand

The National Aquarium of New Zealand stretches along Napier's Marine Parade. It's home to a wide range of saltwater, freshwater, and land animal exhibits from New Zealand and around the world. Native Icon Guided Tour focuses on wonderful native icons including the Kiwi and Tuatara. It gives you the chance to view Kiwi in the wonderful nocturnal house where day turns into night. You will take a close look at Kiwi eggs, and learn about their quirky habits, favorite meals, and more. Tuatara can be tricky to spot - your guide will uncover the mysteries of New Zealand's 'living fossil' and then introduce you to the famous Little Penguins along with some of our other residents.

Your accommodation: Art Deco Masonic Hotel

The Art Deco Masonic Hotel occupies a significant historic building on Napier's waterfront and has been richly refurbished in keeping with the Art Deco architecture. With its central location and decadent décor, this is the best place to experience what Napier is famous for.

Meals included: Breakfast



Day 5



Napier to Wellington City via Masterton

The rolling countryside of the Hawke's Bay leads you into some of New Zealand's richest farmland, located around the Manawatu region. Passing along the Manawatu Gorge the Wairarapa welcomes you. Masterton is home to the golden shears sheep shearing competition while just further south Greytown boasts the largest concentration of historic wooden buildings in the country. Nearby Martinborough is home to dozens of boutique wineries. The route takes you over the Remutaka Range and along the magnificent natural harbour that the capital city of Wellington sits upon.

SUGGESTED ACTIVITY - Zealandia By Night Wildlife Sanctuary Tour

Taking a night tour of Zealandia wildlife eco-sanctuary is an unforgettable experience and one that comes highly recommended. A conservation success and safe haven for some of New Zealand's rarest native animals, Zealandia is home to many remarkable species of birds, reptiles and insects living wild within a beautiful 225 hectare (one square mile) valley, just 10 minutes from the central city.

Your accommodation: Bolton Hotel Wellington

The Bolton Hotel offers contemporary apartment-style accommodation in the heart of Wellington. Just steps from the Parliament buildings and central business district, Bolton Hotel is conveniently close to the best of the city's shops, cafes and restaurants and is within walking distance of Wellington's vibrant waterfront.

Meals included: Breakfast



Day 6



Wellington

Wellington known in Māori as Te Whanganui-a-Tara is home to New Zealand's centre of government. Often referred to as 'mini Melbourne', this windy city is a melting pot of art, culture, food, and fashion. Quirky laneway bars, underground art shows, and hipster eateries make up its inner-city vibe, while a host of sandy beaches outside the urban bustle bring a cheerful holiday feel. Head to Te Papa Museum for a history lesson and a ticket to one of its many international exhibitions or jump aboard the Wellington Cable Car - the only running funicular railway in the country. For those with an eye for boutique, fashion wander through Cuba St to sample some of the city's best vintage stores. Break for coffee at a hipster cafe and be sure to snap a pic outside the 'Beehive', New Zealand's parliamentary debate chamber. Go behind the scenes at Weta Workshop Experience, the Oscar Award Winning design studio behind Lord Of The Rings, The Hobbit, and Avatar. If you're a foodie at heart, a two-hour round trip to Martinborough is a must-do. Take your time as you wind through spectacular wine country. For an educational day out, learn about New Zealand's native species at Zealandia, the world's first fully-fenced eco-sanctuary and home to over 40 types of endangered and native birds.

Return your vehicle to Wellington Airport

Explore more of Wellington before dropping your rental car at the airport depot and continuing your onward journey.

Farewell from Aotearoa / New Zealand

Bid farewell to Aotearoa / New Zealand, taking with you unforgettable memories of its breathtaking landscapes and incredible adventures. In Māori, it is said mā te wā, which is not goodbye, it is see you soon!

Tour details

Departures:	Daily
Tour type:	North Island Self Drive
Starts:	Auckland
Finishes:	Wellington
Tour length:	6
Accommodation:	Boutique Lodges & Hotels
Car/transport type:	

Accommodation summary

Day 1	Hotel Grand Chancellor Auckland
Day 2	Black Swan Lakeside Boutique Hotel
Day 3	Black Swan Lakeside Boutique Hotel
Day 4	Art Deco Masonic Hotel
Day 5	Bolton Hotel Wellington