



Ultimate New Zealand Explorer Tour

Discover the very best of New Zealand on the Ultimate New Zealand Explorer Tour, Experience iconic sights like Auckland's Sky Tower, the geothermal wonders and rich Māori culture of Rotorua, and the stunning coastal beauty of the Bay of Islands. Traverse dramatic alpine scenery in Tongariro and Aoraki - Mount Cook National Park, indulge in world-class wine tasting in Marlborough, and witness marine life in Kaikōura. With premium accommodations, unforgettable wildlife encounters, scenic train rides, and thrilling outdoor adventures, this bespoke tour offers a seamless blend of culture, nature, and luxury tailored to your pace.



Starts in: Auckland
Finishes in: Christchurch
Length: 30days / 29nights
Accommodation: Hotel 4 star
Can be customised: Yes



This itinerary can be customised to suit you perfectly. We can add more days, remove days, change accommodations, mix it up, add activities to suit your interests or simply design and create something from scratch. Call us today to get your custom New Zealand itinerary underway.



Inclusions:

Includes: Late model rental cars

Includes: Unlimited kms

Included activity: Electronic Travel Guide and In-Country Support App

Included activity: The Visitor Promise - Cultural Learning Course

Included activity: Hawkes Bay Half Day Wine Tour with Grape Escape

Included activity: Wellington Half Day Private Tour with Capital Personalized Tour

Included activity: Interislander Ferry Wellington to Picton with Premium Plus Lounge

Included activity: Captains Cabin Experience with Whale Watch Kaikoura

Included activity: Christchurch City Half Day Tour with Leisure Tours

Included activity: Dinner at the Sky Tower Orbit Restaurant

Included activity: Wildlife Peninsula Encounter Tour and Wildlife Cruise with Monarch

plus much more...

Includes: Fully inclusive rental car insurance (excess may apply)

Includes: Afterhours emergency support while touring

Included activity: Private Transfer Auckland Airport to your Auckland Accommodation with Tourcorp

Included activity: Mountain Jade - Highlights Tour

Included activity: Native Icons Guided Tour in National Aquarium of New Zealand

Included activity: Guided Tour of Te Papa The Museum of New Zealand

Included activity: Seals, Beach Cruise and Walk with Wilsons - Includes Lunch

Included activity: Christchurch Gondola

Included activity: Waiheke Island Luxury Private Tour with Auckland & Beyond Tours - Lunch Included

Included activity: Big Sky Stargazing

Included activity: Milford Sound Lunch Cruise on the Fiordland Jewel with Fiordland Discovery



Day 1



Private Transfer Auckland Airport to your Auckland Accommodation with Tourcorp

You will be met at the Auckland airport by the driver and transferred to your Auckland accommodation.

Welcome to Auckland

Welcome to Auckland, known in Māori as Tāmaki Makaurau. Auckland is New Zealand's vibrant "City of Sails," and the country's largest metropolitan area. Nestled between the Pacific Ocean and the Tasman Sea. Surrounded by native bush, lush rainforests, and pristine beaches, Auckland is a haven for both adventurers and urban explorers. Wander through world-class museums and galleries in the city centre or enjoy a peaceful retreat at the Auckland Gardens, where stunning landscapes showcase New Zealand's diverse flora. Stroll along the lively waterfront to savour fresh seafood and international cuisine at Viaduct restaurants. For an unforgettable perspective, ascend the iconic SkyTower, New Zealand's tallest structure, and take in panoramic views of the city and its picturesque islands.

Your accommodation: M Social Hotel Auckland

A contemporary hotel for the curious, the explorers and those who thrive on new experiences. Functionally chic, this contemporary hotel overlooks the vibrant Princes Wharf that is home to a good array of dining, entertainment and shopping experiences.



Day 2



Waiheke Island Luxury Private Tour with Auckland & Beyond Tours - Lunch Included

Explore the famous Waiheke Island, known for its rolling vineyards, sandy beaches, rocky bays, and glorious wineries. Meet your guide in Auckland as you board the ferry to head out to the island, cruising along the Hauraki Gulf to reach the Matakaitia Bay terminal. On the Island, your guide will tour you around in a luxury vehicle, as you indulge in wine tasting and a vineyard tour from three premium wineries, before enjoying a picnic lunch at one of the gorgeous white sandy beaches. After lunch you will get to explore an award-winning Olive Oil estate, here you will get the chance to view the trees and the process of how the Oil is harvested and made. After your tour, you will board the ferry and head back to Auckland.

Dinner at the Sky Tower Orbit Restaurant

Soaring high above Auckland you'll discover Orbit, a truly iconic New Zealand brasserie offering diners sensational views - and food to match. Situated at the top of Auckland's Sky Tower, the dining room rotates once every hour, providing a truly unique experience with amazing 360-degree panoramas of the city, the Hauraki Gulf and beyond. Orbit offers a modern dining experience in a relaxed, open atmosphere with a delicious kiwi-inspired a la carte menu that features the best local and seasonal produce. As New Zealand's only rotating restaurant offering 360-degree views, it's an unforgettable experience that never ceases to delight.

Your accommodation: M Social Hotel Auckland

A contemporary hotel for the curious, the explorers and those who thrive on new experiences. Functionally chic, this contemporary hotel overlooks the vibrant Princes Wharf that is home to a good array of dining, entertainment and shopping experiences.

Meals included: Breakfast, Lunch, Dinner



Day 3



Collect Rental Car

This tour's from price includes an intermediate-sized vehicle, setting you up for comfortable travels. Yet, we understand every adventure is unique! Feel free to select the perfect wheels from our incredible collection of rental cars, spanning from economy hatchbacks to premium SUVs.

Car Instructions

On collection of your rental car, you will be required to sign a rental agreement and provide a credit card for a security bond authorisation. Remember, the bond is only authorised, not charged, at this stage. While your rental rate may include coverage for mechanical breakdowns (please verify your specific car inclusions), you may also have the option to purchase roadside assistance for non-mechanical issues. All drivers must present a physical credit card, valid driving license and passport to be added to the agreement, with potential additional charges for extra drivers. Debit cards may be used on select vehicles. If you are presenting an international drivers license, this must be accompanied by the original domestic license. Drivers under 21 are not permitted, and those aged 21-24 may face a surcharge, both payable directly to the rental company. For detailed information, please refer to your rental car inclusions. See this important information if you are traveling between the North and South Islands on the ferry

Auckland to Paihia

The drive from Auckland to the Bay of Islands takes approximately 3.5 hours, but allow extra time to enjoy the sights along the way. Pause for a breath of fresh salty air in Whangarei, where you can explore scenic highlights like the Whangarei Falls or the lively Town Basin. Further along, take a break in Kawakawa known for its quirky, world-famous Hundertwasser Toilets. As you approach Paihia, the gateway to the Bay of Islands, soak in the stunning views of native bush and endless golden beaches that define this iconic Northland region.

Explore Bay of Islands

Commonly known as the 'winterless north', New Zealand's Bay of Islands is made up of over 140 subtropical atolls. Renowned for its untouched beaches, abundant marine life, and idyllic climate, this tropical paradise ticks all the boxes. Spend some time on a remote stretch of beach, or see the dolphins on an ocean safari. If diving is your thing, take the morning to descend the Rainbow Warrior - The Greenpeace flagship sunk by French saboteurs in 1985. Wander around Russell, a whaling port founded in 1843. Learn about our culture in historic Waitangi, the site where The Treaty of Waitangi was signed in 1840 between the Māori and Europeans. Alternatively, you may like to take a day tour to Cape Reinga, the very top of the North Island.

Your accommodation: Copthorne Hotel and Resort Bay of Islands

Copthorne Hotel & Resort Bay of Islands is located within the Waitangi Treaty grounds, surrounded by native bush and the beautiful Bay of Islands Harbour.

Meals included: Breakfast



Day 4



Cape Reinga Scenic Flight and Guided Tour with Salt Air

Experience the beauty of the North from both air and land. Take a spectacular scenic flight to Cape Reinga over Whangaroa Harbour and the Rangaunu Harbour as well as Coopers Beach, Doubtless Bay and Ninety Mile Beach.

Waitangi Treaty Grounds Guided Tour and Cultural Performance

Waitangi is one of New Zealand's most historic sites where the Treaty of Waitangi was signed in 1840 between the Māori and the British Government. This two day pass allows you access to the Treaty of Waitangi Grounds and includes admission to the Te Kōngahu Museum and Te Rau Aroha Museum and a Maori Cultural performance. During your guided tour, learn about the history of the treaty and discover the stories and events that shaped New Zealand. The cultural performance inside the carved meeting house includes waiata (singing), poi and the haka - a war dance Aotearoa-New Zealand is well known for.

Your accommodation: Copthorne Hotel and Resort Bay of Islands

Copthorne Hotel & Resort Bay of Islands is located within the Waitangi Treaty grounds, surrounded by native bush and the beautiful Bay of Islands Harbour.

Meals included: Breakfast



Day 5



Paihia, Bay of Islands to Snells Beach via Waipoua

From the Bay of Islands you will head west, leaving the Pacific Ocean for the wilder shores of Hokianga and the Tasman Sea. Small towns Omapere and Opononi are reminiscent of days gone by with a vintage seaside feel and are the perfect place to stop for an ice cream in a hot day. To the south is the Kauri coast, which you're about to explore. Head south into the Waipoua Forest, home to giant Kauri trees. Allow time for one of a number of short walks available in the area. Not to be missed is the five minute loop to view the largest Kauri in New Zealand, Tane Mahuta. Backtrack cross-country to the Matakoho Kauri Museum an award winning museum with extensive historical displays. Continue on the road to Snells Beach, a lovely little township close to Warkworth. If you arrive in plenty of time, head into Matakana Wine Country for some great dining options. Another must do while you're here is a day excursion to one of many deserted beaches in the Tawharanui Marine Reserve.

Snells Beach

Tucked away on the stunning Matakana Coast, just an hour's drive north of Auckland, Snells Beach is the quintessential Kiwi seaside escape. This long, sandy beach offers a peaceful and family-friendly environment with gentle, clear waters perfect for swimming, paddleboarding, and kayaking.

The calm waters of Kawau Bay provide a picturesque backdrop, and you can enjoy spectacular sunrises over the water. Nearby are the beautiful beaches of Scandrett Regional Park and the boutique vineyards of Matakana, and a little further, you will find the often deserted beaches of the Tawharanui Marine Reserve.

The area is also a haven for art and food lovers, with the renowned Brick Bay Wines & Sculpture Trail just a stone's throw away, where you can stroll through native bush and vineyards while admiring contemporary New Zealand art.

Whether you're looking to relax under a pohutukawa tree, explore the local arts scene, or simply enjoy some fish and chips with a view, Snells Beach is the perfect spot to slow down and embrace the laid-back coastal lifestyle.

Your accommodation: Tahi Lodge

Tahi Lodge is situated at Snells Beach in the picturesque Matakana Coast Wine Country region, only an hour scenic drive north from Auckland and close to many activities and attractions. It is an ideal accommodation choice for relaxing short breaks, holidays with family and friends or celebrating special occasions such as birthdays, weddings or anniversaries.

Meals included: Breakfast



Day 6



Snells Beach to Coromandel Township

Leave Snells beach, driving from Warkworth and pass through Auckland. As you leave the city boundaries you'll note a change in landscape to lush rolling farmland. Cross the Hauraki Plains, one of the largest dairy producing regions in New Zealand, and take in the abundance of black and white Friesian cows. You'll go through the Thames Estuary, a haven for wildlife - in particular shore birds. If you're keen on birds, a detour to Miranda is worthwhile to spot the many godwits and oystercatchers. Arriving in the old gold town of Thames you have the option of two routes to the Coromandel. Take the road over the ranges and Highway 25A will deliver you to the coast in 45 minutes. If you're up for a little longer, more scenic drive, take the route via the Pohutukawa Coast, north to the Coromandel Township. Known as one of the most spectacular drives in the region, it is well worth your time if you can spare the extra minutes.

Driving Creek Railway & Potteries - EyeFull Tower Tour

Driving Creek Railway and Potteries has become a Coromandel icon. The dream of Barry Brickell was to establish a pottery workshop on his land. Using a railway he would have access to the clay on the land and the pine kiln fuel. Over the next 15 years the railway developed until in 1990 it was finally licensed to carry fare paying passengers and ever since thousands of visitors have made the trip to Coromandel to experience this unique attraction. The 1 hour return train trip on the innovatively designed trains takes you through replanted native kauri forest and includes 2 spirals, 3 short tunnels, 5 reversing points and several large viaducts as it climbs up to the mountain-top terminus. The pottery is still producing and you can watch the artists at work as well as purchase items. It is important you read and understand the risks associated with this activity. For more information please see [here](#).

Coromandel Township to Whitianga

The short drive from Coromandel Township to Whitianga takes you via the scenic coastline of Whangapoua Harbour and the Kuaotuna beach. For beach lovers there are plenty of side roads to often deserted golden sand beaches and bays. Whitianga sits on Mercury Bay on the eastern coast of the Coromandel peninsula, Captain Cook arrived there in 1769 to observe the transit of Mercury and hence the bay was named. This small bustling town once played a major part in the kauri logging industry with over 150 million metres of timber being exported between 1830 and the end of the century. The Whitianga museum, housed in the old dairy factory displays an interesting collection designed to relay engrossing tales of the time. Today the town has many cafes and craft shops with its income derived mainly from tourists. The summer months bring visitors to enjoy fishing, surfcasting and swimming along the palm fringed beaches. But the largest attraction is probably the big game marlin fishing with many charters available to hunt in the rich waters of the Pacific Ocean. On the other side of the harbour is Australasia's oldest stone wharf from where a passenger ferry takes visitors to the delightful Cooks Beach just a 5 minute walk along the road. Nearby is Buffalo Beach, named after H.M.S. Buffalo, a ship taking convicts and settlers to South Australia that blew aground in 1840.

Explore Whitianga

Whitianga is located at Mercury Bay on the eastern coast of the Coromandel peninsula, a 3-hour drive from Auckland and 1 and a half hours from Thames. Captain Cook arrived there in 1769 to observe the transit of Mercury, and hence the bay was named. This small bustling town once played a major part in the kauri logging industry, with over 150 million metres of timber being exported between 1830 and the end of the century. The Whitianga museum, housed in the old dairy factory, displays an interesting collection designed to relay engrossing tales of the time.

Today, the town has many cafes and craft shops, with its income derived mainly from tourists. The summer months bring visitors to enjoy fishing, surfcasting, and swimming along the palm-fringed beaches. But the largest attraction is probably the big game marlin fishing, with many charters available to hunt in the rich waters of the Pacific Ocean.

On the other side of the harbour is Australasia's oldest stone wharf, from where a passenger ferry takes visitors to the delightful Cooks Beach, just a 5-minute walk along the road. Nearby is Buffalo Beach, named after H.M.S. Buffalo, a ship taking convicts and settlers to South Australia that blew aground in 1840. As well as Opito Bay, Flaxmill Bay, and Kuaotuna Beach, to name but a few of the many locations easily visited from Whitianga, the region is well worth a visit.

Your accommodation: Sovereign Pier On The Waterways

Sovereign Pier on the waterways provides 5 Star holiday water front accommodation in an exciting location. A reflection of good taste and quality to provide value in holiday choices for all. Enjoy a private balcony with stunning views and access to a private marina and a swimming pool with hot tub.

Meals included: Breakfast



Day 7



Coves, Caves and Coastline Cruise from Whitianga

Explore the volcanic coastline with its many caves, blowholes and golden beaches all from the comfort and safety of an ex coastguard 28 ft cruiser. Departing from Whitianga Wharf journey past the towering Shakespeare's Cliffs and historic Cooks Beach. Visit Cathedral Cove and the islands in the marine reserve. There is also a chance to swim with the abundant fish in the reserve (on board snorkel gear provided - don't forget your swimsuit and towel). For those who prefer to stay dry an underwater camera relays images to an onboard TV.

Hot Water Beach

Famous for its naturally heated geothermal springs, Hot Water Beach offers a unique experience where you can dig your own spa pool in the sand at low tide and relax in the warm waters with stunning coastal views. With its golden sands, powerful surf, and peaceful atmosphere, it's the perfect blend of relaxation and adventure.

Your accommodation: Sovereign Pier On The Waterways

Sovereign Pier on the waterways provides 5 Star holiday water front accommodation in an exciting location. A reflection of good taste and quality to provide value in holiday choices for all. Enjoy a private balcony with stunning views and access to a private marina and a swimming pool with hot tub.



Day 8



Whitianga to Rotorua

Heading south from the Coromandel Peninsula passing through a popular local holiday spot, Tairua continuing on to State Highway 2 passing through a series of quaint farming villages before arriving in Te Aroha. Te Aroha centre is complete with Edwardian style buildings and the popular natural mineral spas. Pop behind the spa building and with a little patience you will see the world's only natural hot soda water geyser, Mokena Geyser, erupt. From here it is a short drive to Matamata, home to Hobbiton and then on to the geothermal and cultural centre, Rotorua.

Rotorua

Discover the geothermal, adventure, and cultural wonderland of Rotorua. As you explore, you may see steam rising from cracks in the road, bubbling and hissing water in pools along the lake's edge, and the unmistakable smell of Sulfur. Rotorua is rich in Māori culture and history, with many Māori inhabitants recognising the great potential of the volcanic land. For an outdoor adventure, head to The Redwoods and experience the rainforest treetops from high up. There are a few accessible trails for disabled hikers and great biking trails as well. If you're lucky, you might spot some of New Zealand's native birds, such as the Pīwakawaka (Fantail) and the Tūī. Alternatively, enjoy the Lake Tikitapu Blue Lake Walk or explore Kuirau Park, where you'll find bubbling mud pools and steaming lakes. Don't miss the private thermal reserves such as Te Puia and Wai-O-Tapu, where you can walk among bubbling mud pools, spouting geysers, and Sulfur ponds. Just a few minutes from the town centre, the Agrodome and National Kiwi Hatchery offer an insight into nature. Rotorua's rich Māori culture is a must-see. Spend an evening with Te Pā Tū, complete with a traditional-style dinner or stroll along the lake edge to reach one of the country's oldest Māori villages at Ohinemutu. When hunger strikes, visit Eat Street in Rotorua CBD, a vibrant street lined with delicious eateries and restaurants to satisfy any craving. No visit to Rotorua would be complete without experiencing Rotorua's original tourist attraction - a relaxing spa treatment. This town boasts an array of wellness experiences to unwind in. Whether you are seeking adventure, culture, or relaxation, Rotorua offers an unforgettable experience.

Polynesian Spa Lake View Private Pool

The geothermal mineral waters of the Polynesian Spa in Rotorua are sought after the world over as one of the top 10 spas in the world. Indulge your need for a little luxury and enjoy some time in a Private Deluxe Pool, with stunning 360 degree views over Lake Rotorua, you will be left in peace to soak your cares away. Alkaline geothermal spring water pools are 38.5 °C and 0.7m deep. Available for blocks of 30 minute hire with a minimum of two adults, this is the perfect activity to enjoy a relaxing afternoon with your partner.

Your accommodation: On the Point

On the Point is a beautiful lodge accommodation in a stunning location and offering panoramic views. It also offers gourmet New Zealand food and wine, as well as a range of on site activities from pampering massage, fly fishing from the private beach, water sports, tennis, gym and boating and is only 10 minutes from the heart of Rotorua.



Day 9



Te Ra Daytime Experience at Te Puia

Te Puia welcomes you to explore the magic hidden within Te Whakarewarewa Thermal Valley. Become face-to-face with the majestic Pōhutu Geyser, the largest naturally active geyser in the Southern Hemisphere. Feel the thrill as it erupts, sending plumes of steam into the sky. Then, step into the Kiwi Conservation Centre, for a close-up encounter with this rare native species, a symbol of our nation's unique wildlife. Part of your ticket is donated to support the conservation of the Kiwi in this sanctuary. As you continue through the Te Puia Valley, look upon the dynamic landscape of bubbling mud pools, and steaming vents and feel the power that the land holds. Throughout this, everywhere you look you will see beautifully crafted Māori-made artwork and sculptures, each piece a story carved in wood and stone, adding a layer of cultural depth to the natural beauty. Step into the New Zealand Māori-made artwork and sculptures, each piece a story carved in wood and stone, adding a layer of cultural depth to the natural beauty. The guides are direct descendants of the original tour guides, and you can feel their excitement to show their culture and land.

National Kiwi Hatchery Experience

The National Kiwi Hatchery Experience is a special opportunity to gain insight into and view this highly regarded conservation centre. Developed with the visitor experience in mind, the hatchery boasts special viewing opportunities and is hosted by kiwi expert guides who ensure guests leave fully informed and all questions answered. Learn all about New Zealand's intriguing national icon and the efforts of the kiwi husbandry team, see and discover what it takes to hatch and rare chicks, and if you're lucky see baby chicks in person!

Te Pā Tū Evening Māori Cultural Experience - Dinner Included

New Zealand's Most Awarded Cultural Attraction, presenting Te Pā Tū. Feast on song, drama, tradition, and divine seasonal kai (cuisine) within the forest Pā (village) blanketed by towering Tawa trees, blazing bonfires, and a forest-formed amphitheatre. Te Pā Tū shares Māori history, traditions, and cultural aspirations across 4-hours of celebration and feasting. These events change with each season of the Maramataka, the Māori lunar calendar.

Your accommodation: On the Point

On the Point is a beautiful lodge accommodation in a stunning location and offering panoramic views. It also offers gourmet New Zealand food and wine, as well as a range of on site activities from pampering massage, fly fishing from the private beach, water sports, tennis, gym and boating and is only 10 minutes from the heart of Rotorua.

Meals included: Breakfast, Dinner



Day 10



Mountain Jade - Highlights Tour

This 30-minute highlights tour is a rare opportunity to spend time with New Zealand Jade artists. New Zealand Jade known as Greenstone, but more commonly known in New Zealand as Pounamu has a rich history within Maori culture. The expert guide will show you the intricate process of Pounamu carving firsthand in the Mountain Jade studio. The local artist will be there to personally demonstrate the carving process and share their stories and knowledge with you. To top off the tour, you will get to select your very own piece of Pounamu and learn to string it yourself so you can take it home.

Rotorua to Napier via Taupō

This drive will take you through the thermal region just south of Rotorua. Home to a plethora of unique geothermal attractions including boiling mud pits, natural hot springs and steaming geysers, this area is a must do before you move on to Napier. Notable attractions are Wai-O-Tapu, Waimangu and Craters of the Moon. Continue on to Taupō and marvel at the lake, a giant crater formed following a volcanic eruption in the year 180 CE. As you approach the town, be sure to stop at Huka Falls to view the spectacular sight of hundreds of cubic metres of water spilling every second down the narrow 11 metre drop. For an extra thrill take a jet-boat ride at the base of the falls. Leaving Taupō, follow the road as it climbs the rugged Ahimanawa Range before descending back down the Pacific Coast to art deco coastal township of Napier.

Huka Falls

Lake Taupo has a massive capacity of approximately 59 cubic kilometres and its only outlet is the Waikato River. At Huka, just north of the town centre the Waikato River is forced through a narrow volcanic rock chasm. The resulting spectacle is compounded as this massive volume of water surges towards the falls. A jet boat ride is a fun and thrilling way to see this geographic wonder or a short walk from the car park will position you onto a viewing platform. Close to the falls (look for the signs) is the Prawn Farm and here you can enjoy a prawn feast.

SUGGESTED ACTIVITY - Huka Falls Jet Boat Ride

The Huka Jet is 30 minutes of pure fun and exhilaration, skimming close to cliffs, sliding past trees, feeling the adrenalin of full 360 degree spins. The excitement continues right up to the base of the foaming Huka Falls, where you get a spectacular water level view to New Zealand's most visited natural attraction. Nothing compares to watching 220,000 litres per second tumbling over the cliff face towards you. The water from the mighty Huka Falls runs down the Waikato River through a series of Hydro Power Stations. You'll get a view of the Wairakei Geothermal Power Station in the comfort of a powerful Chevrolet V8 jet boat. This unique Geothermal Power Station uses underground geothermal activity to produce hot steamy water. The Waikato Rivers beautiful environment is varied and unique and is New Zealand's longest river flowing north from our largest lake, Lake Taupō. It is important you read and understand the risks associated with this activity. For more information please see here.

Napier City

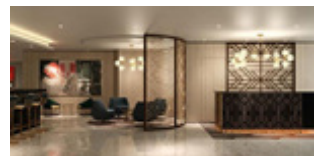
Napier, a coastal gem, is famed for its 1930s Art Deco architecture, the annual Art Deco Weekend, stately Norfolk pines, nearby wineries, and fresh local produce. With a Mediterranean climate and over 2,200 hours of sunshine annually, it boasts a thriving café culture set against stunning heritage buildings. The city center has around 30 cafés within walking distance, while Ahuriri, just beyond Bluff Hill, offers more upscale dining. Marine Parade overlooks the Pacific Ocean and Cape Kidnappers, home to the world's largest mainland gannet colony. Visitors can explore Ocean Spa, the Hawke's Bay Museum, and the National Aquarium of New Zealand. Bluff Hill, a key landmark, provides sweeping views of Napier, Perfume Point, Westshore Beach, and the busy Port of Napier, which exports timber, fruit, and meat worldwide.

In 1931, Napier was devastated by a 7.8-magnitude earthquake, New Zealand's worst natural disaster. Fires ravaged the city. Rebuilding efforts transformed Napier and Hastings into modern cities, while the uplifted Ahuriri Lagoon created much-needed land for expansion.

Your accommodation: Swiss-Belboutique Napier

Combine your Napier experience with a stay at the premium Art Deco-style hotel at the heart of downtown Napier. Located just a five-minute stroll from Marine Parade – spanning Hawke's Bay waterfront and home to the Sunken Gardens and National Aquarium of New Zealand.

Meals included: Breakfast



Day 11



Hawkes Bay Half Day Wine Tour with Grape Escape

This wine tasting tour is designed for casual imbibers and wine aficionados. Meet like-minded people and share an appreciation of Hawke's Bay's fantastic wines. Taste great wines made with passion and learn of the area's unique growing conditions. Take home outstanding wines and wonderful memories. Join a fun filled wine tasting afternoon in the sun driving through absolutely stunning scenery. Meet like-minded people and share an appreciation of this region's fantastic wine. Visit four to five wineries and enjoy a cheese platter on the grounds of the Ngatarawa Vineyard beside the lily pond.

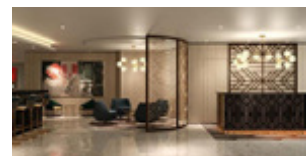
Native Icons Guided Tour in National Aquarium of New Zealand

The National Aquarium of New Zealand stretches along Napier's Marine Parade. It's home to a wide range of saltwater, freshwater, and land animal exhibits from New Zealand and around the world. Native Icon Guided Tour focuses on wonderful native icons including the Kiwi and Tuatara. It gives you the chance to view Kiwi in the wonderful nocturnal house where day turns into night. You will take a close look at Kiwi eggs, and learn about their quirky habits, favorite meals, and more. Tuatara can be tricky to spot - your guide will uncover the mysteries of New Zealand's 'living fossil' and then introduce you to the famous Little Penguins along with some of our other residents.

Your accommodation: Swiss-Belboutique Napier

Combine your Napier experience with a stay at the premium Art Deco-style hotel at the heart of downtown Napier. Located just a five-minute stroll from Marine Parade – spanning Hawke's Bay waterfront and home to the Sunken Gardens and National Aquarium of New Zealand.

Meals included: Breakfast



Day 12



Napier to Wellington via Kapiti Coast

Journey from the charming Art Deco city of Napier through rolling vineyards and picturesque countryside as you head towards Wellington. Enjoy the scenic drive along the stunning Kapiti Coast, with views of the rugged shoreline and tranquil beaches. As you approach the capital, you'll be greeted by Wellington's vibrant culture, bustling waterfront, and renowned culinary scene. A perfect blend of natural beauty and urban excitement awaits on this unforgettable road trip.

Wellington

Wellington known in Māori as Te Whanganui-a-Tara is home to New Zealand's centre of government. Often referred to as 'mini Melbourne', this windy city is a melting pot of art, culture, food, and fashion. Quirky laneway bars, underground art shows, and hipster eateries make up its inner-city vibe, while a host of sandy beaches outside the urban bustle bring a cheerful holiday feel. Head to Te Papa Museum for a history lesson and a ticket to one of its many international exhibitions or jump aboard the Wellington Cable Car - the only running funicular railway in the country. For those with an eye for boutique, fashion wander through Cuba St to sample some of the city's best vintage stores. Break for coffee at a hipster cafe and be sure to snap a pic outside the 'Beehive', New Zealand's parliamentary debate chamber. Go behind the scenes at Weta Workshop Experience, the Oscar Award Winning design studio behind Lord Of The Rings, The Hobbit, and Avatar. If you're a foodie at heart, a two-hour round trip to Martinborough is a must-do. Take your time as you wind through spectacular wine country. For an educational day out, learn about New Zealand's native species at Zealandia, the world's first fully-fenced eco-sanctuary and home to over 40 types of endangered and native birds.

Your accommodation: Bolton Hotel Wellington

The Bolton Hotel offers contemporary apartment-style accommodation in the heart of Wellington. Just steps from the Parliament buildings and central business district, Bolton Hotel is conveniently close to the best of the city's shops, cafes and restaurants and is within walking distance of Wellington's vibrant waterfront.

Meals included: Breakfast



Day 13



Wellington Half Day Private Tour with Capital Personalized Tour

Witness the best sights of New Zealand's capital city up close and personal, before experiencing the beauty of the coastline that surrounds central Wellington and its harbour. On this tour, you will head for the hills of Mt Victoria to witness the stunning landscape of Wellington and its harbour below. You will then follow the coastline round to the Weta Cave Museum, which is the showpiece of Peter Jackson's film empire. After a drive around the south coast, you will head back into the city for a ride on the Cable Car and a walk around the lady Norwood rose gardens. The tour concludes with a visit to the Beehive and our Parliament buildings.

Guided Tour of Te Papa The Museum of New Zealand

Beginning over one hundred million years ago, join your guide on a journey through New Zealand's rich history and cultures. Hear stories of our adaptive wildlife, the resilience of the Māori people, and artistic interpretations of life in the South Pacific.

Whether you have limited time or here for an extended visit, this tour will give you a great opportunity to understand the vibrant landscapes and cultures you will encounter throughout Aotearoa New Zealand.

SUGGESTED ACTIVITY - Zealandia By Night Wildlife Sanctuary Tour

Taking a night tour of Zealandia wildlife eco-sanctuary is an unforgettable experience and one that comes highly recommended. A conservation success and safe haven for some of New Zealand's rarest native animals, Zealandia is home to many remarkable species of birds, reptiles and insects living wild within a beautiful 225 hectare (one square mile) valley, just 10 minutes from the central city.

Your accommodation: Bolton Hotel Wellington

The Bolton Hotel offers contemporary apartment-style accommodation in the heart of Wellington. Just steps from the Parliament buildings and central business district, Bolton Hotel is conveniently close to the best of the city's shops, cafes and restaurants and is within walking distance of Wellington's vibrant waterfront.

Meals included: Breakfast



Day 14



Return your rental car

Return your rental vehicle to your designated depot before your next adventure.

Interislander Ferry Wellington to Picton with Premium Plus Lounge

The 92 km ferry journey between Wellington and Picton, taking around 3 hours, is hailed as one of the world's most beautiful ferry rides. Departing Wellington Harbour, you'll pass landmarks like Pencarrow Head with New Zealand's oldest lighthouse, Red Rocks' seal colony, and Oterangi Bay, famous for its record wind speed. From the Cook Strait, marvel at views of the Kaikōura Ranges and spot dolphins and seabirds. An hour of the trip winds through the stunning Marlborough Sounds, featuring bush-clad mountains, tranquil bays, and crystal-clear waters—a photographer's dream. The journey concludes in the charming town of Picton at the end of Queen Charlotte Sound. When not soaking up the views from the deck, relax in the Premium Plus lounge, offering complimentary drinks, snacks, internet, and luxurious seating for the most comfortable way to cross the Cook Strait.

Collect Rental Car

This tour's from price includes an intermediate-sized vehicle, setting you up for comfortable travels. Yet, we understand every adventure is unique! Feel free to select the perfect wheels from our incredible collection of rental cars, spanning from economy hatchbacks to premium SUVs.

Picton to Abel Tasman National Park

From Picton you'll first travel the Marlborough Sounds coastline between Picton and Havelock. This drive offers spectacular views of the sounds, so be sure to allow plenty of time for stops and sightseeing. Take moment to explore the secluded sandy coves along the narrow road to Portage. Aim to arrive in Havelock for lunch, as this portside town has a great variety of cafes and restaurants to eat at. Stop at the famous Pelorus bridge, just outside of Havelock. From here there are a number of forest walks to stretch your legs on with the most popular being a 30 minute loop through beech, rimu and totara forest. Continue on over the Bryant Range to arrive into Tasman Bay and the city of Nelson. Motueka is a further 45 minutes along the coast and from there it's just a short drive to Kaiteriteri and Marahau, all ideal spots from which to explore the beautiful Abel Tasman National Park.

Your accommodation: Abel Tasman Lodge

Located at the Abel Tasman National Park entrance, Abel Tasman Marahau Lodge is a privately-owned accommodation and conference facility, purpose built, personally serviced, affordable and accessible.

Meals included: Breakfast



Day 15



Abel Tasman National Park

Experience the golden beauty of Abel Tasman National Park, a coastal paradise renowned for its spectacular hiking track, pristine golden beaches, secluded inlets, and private lagoons. With its mild climate and stunning natural environment, it's a cherished destination for New Zealanders nationwide. Why not enjoy a scenic cruise through the Sounds or take a kayaking tour around its many sheltered bays? Relax to the melodious birdsong and get up close to some of the park's many animal residents, including native bats, geckos, birds, marine mammals, fur seals, and dolphins.

Seals, Beach Cruise and Walk

Experience the best of Abel Tasman on this combined beach cruise and walk tour. Cruise into the Tonga Island Marine Reserve and pause to watch the antics of the Resident Fur Seal Colony. After landing at the historic Tonga Quarry Beach, take a two hour, fifteen minute walk over forested land and around the spectacular Bark Bay Estuary, renowned for its cascading waterfalls. Rejoin the cruise at the sheltered golden cove on Medlands Beach.

Your accommodation: Abel Tasman Lodge

Located at the Abel Tasman National Park entrance, Abel Tasman Marahau Lodge is a privately-owned accommodation and conference facility, purpose built, personally serviced, affordable and accessible.

Meals included: Breakfast, Lunch



Day 16



Abel Tasman National Park to Kaikōura

Enjoy a stunning journey from the golden beaches of Abel Tasman National Park to the coastal haven of Kaikōura. Travel through the scenic landscapes of the Marlborough region, passing lush vineyards and rugged mountains. You will pass through Marlborough and Blenheim, New Zealand's largest wine-growing regions - and home to many award-winning wines. We recommend timing your day to arrive for lunch with a view to sampling some of the local offerings at one of the 40-plus wineries surrounding the area. Continue over the dry hills of the Marlborough Ranges to one of the most spectacular coastlines in the world, Kaikōura. For over 50km's (30 miles) follow the shoreline. Keep an eye out for an abundance of seals, seabirds and other native wildlife. Kaikōura is also one of the only places in the world where whales can be seen all year round. To the east, you'll see the Pacific Ocean while the West brings views of the towering Kaikōura ranges. Arriving in the Kaikōura township, you'll find it bustling with cafes and restaurants.

Kaikōura

Kaikōura is a stunning coastal town known for its rich marine life and dramatic scenery. Visit the fur seal colony, take a whale-watching cruise, or swim with playful dusky dolphins. The town is rich with attractions, walking tracks, and activities for every visitor. A walk around the Kaikōura Peninsula is a must, where you can explore tide pools teeming with marine life, observe sea creatures basking on the rocks, and, for bird lovers, spot the impressive native albatross. Just be sure to keep a respectful distance from any sea lions you meet. Highlights like Ohau Point and historic Fyfe House offer insight into the region's wildlife and whaling past. Finish your visit by sampling the fresh local seafood, renowned for having some of the best fish and chips in the country, or by taking a relaxing wander through the tranquil Lavendyl Lavender Farm.

Your accommodation: Sudima Hotel Kaikōura

This state-of-the-art waterfront hotel in Kaikōura has a 4.5 star rating with an outstanding in-house restaurant, a bar and conference facilities.

Meals included: Breakfast



Day 17



Captains Cabin Experience with Whale Watch Kaikōura

The Captain's Cabin is situated in the wheelhouse alongside the skipper and watchkeeper. This cabin provides guests with exclusive access to the skipper as they go about their duties as well as a dedicated guide for the duration of the tour. There is a maximum of 12 passengers, giving a more intimate, comfortable, and modern setting.

Lavendyl Lavender Farm

Lavendyl farm grows over 50 different varieties of lavender plants on the 5 acre Lavender farm. A visit to the farm is a sensory experience. Stroll through the gardens while admiring lavender and native New Zealand plants and flowers, meet the friendly sheep and take in the spectacular views. From January to February, when the flowers are at their peak for oil production, the distilling process can be observed on site. All year round a wide range of lavender products are available to purchase from the unique onsite gift store and gallery. Finish your visit with a relaxing cup of tea or coffee and delicious lavender ice cream inside the tearoom or out in the gardens. For more information, including opening hours visit www.lavenderfarm.co.nz.

SUGGESTED ACTIVITY - Zipline & Native Forest Tour with EcoZip Kaikōura

Enjoy a scenic journey to Kaikōura's beachfront airfield, followed by a 4WD adventure crossing the braided Kahutara River to Rakanui Station. Take in panoramic views of rolling farmland, lush valleys, and snowcapped mountains before embarking on an exhilarating 5-zipline course, including twin lines for side-by-side rides. Learn fascinating local history from expert guides and enjoy a walk through native forest, with a chance to plant a tree during winter as part of Eco Zip's conservation program. An unforgettable eco-adventure awaits! It is important you read and understand the risks associated with this activity before travel. For more information, please see [here](#)

Your accommodation: Sudima Hotel Kaikōura

This state-of-the-art waterfront hotel in Kaikōura has a 4.5 star rating with an outstanding in-house restaurant, a bar and conference facilities.

Meals included: Breakfast



Day 18



Kaikōura to Christchurch

Travel down the coast before heading inland through the North Canterbury wine region - the Waipara Valley. If you've time on your hands we recommend taking a detour to Hanmer Springs for relaxing dip in its thermal pools. Arriving into Christchurch you'll see a new and improved city, steadily rising from the ruins of the 2011 and 2010 earthquakes.

Christchurch

Christchurch known in Māori as Ōtautahi, is the largest metro area in the South Island. Commonly referred to as New Zealand's "Garden City", Christchurch is home to one of the biggest public parks in the country, and beautiful botanic gardens. The city was hit with devastating earthquakes in 2010 and 2011, now the city crosses the line between its English heritage and a new modern architecture. To take in some arts and culture, pay a visit to the Canterbury Museum or the Christchurch Art Gallery. Take a step back in time with a tram around the city or punt along the Avon River. If tasting your way around the city is your means of travel, try out a cultural eating tour. A short drive from the CBD will lead you to the outskirts of the Banks Peninsula beachside suburb of Sumner or through the tunnel to Lyttelton Harbour which hosts fantastic markets on Saturday mornings.

Art in Christchurch

Christchurch is a city brimming with art, from exhibitions and galleries to vibrant street art throughout the city. While you're here, take time to explore the city's rich artistic offerings, starting with the Christchurch Art Gallery Te Puna o Waiwhetū. With a diverse range of works on display, from old masters to contemporary art, there's something for everyone. The gallery also hosts regular events, including talks, museum tours, and film screenings. Don't miss The Arts Centre Te Matatiki Toi Ora, a vibrant hub for arts, culture, education, creativity, and entrepreneurship. This collection of heritage buildings houses museums, boutique galleries, eateries, retailers, and offices. Beyond the conventional galleries, the city's streets are an open-air art gallery. Christchurch has gained a strong reputation as the home of street art, with colorful murals from inspiring artists appearing across the inner city. Be sure to look out for the ever-evolving street art, including the Riverside Mural, Rauora Park's spray cans, and the urban aesthetics of the YMCA building.

Your accommodation: The Observatory Hotel

The Observatory Hotel is situated in the Christchurch city center, short walk to The Art Centre, restaurants & bars. It brings contemporary style to the heart of a precinct rich with history. Every room offers unique experience, each being individually designed providing luxury, art and comfort.

Meals included: Breakfast



Day 19



Christchurch Gondola

In the Heathcote Valley, just a 20-minute drive from the heart of Christchurch City, ride the Christchurch Gondola for nearly a kilometer to the collapsed rim of an extinct volcano, which exploded six million years ago. Take in the spectacular panoramic views of the central city, Lyttelton Harbour, Banks Peninsula, Canterbury Plains, and the distant peaks of the Southern Alps. Wander the summit complex, enjoy a coffee or lunch in the cafe, and choose one of many nature walks to explore or visit the Christchurch Discovery Ridge, a dramatic reconstruction of the history of the Port Hills and Christchurch.

Discover Christchurch Afternoon Tour

A half-day sightseeing tour of Christchurch highlighting both the damage to the city inflicted by several large earthquakes in 2010 and 2011 and the rebuild which is currently in progress, together with the surviving beauty of the city and the historical landmarks. Experience the grand architecture, beautiful gardens, and scenic viewpoints on a half-day city tour of Christchurch.

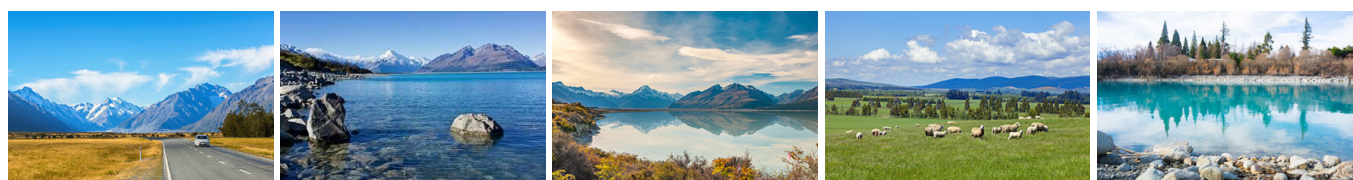
Your accommodation: The Observatory Hotel

The Observatory Hotel is situated in the Christchurch city center, short walk to The Art Centre, restaurants & bars. It brings contemporary style to the heart of a precinct rich with history. Every room offers unique experience, each being individually designed providing luxury, art and comfort.

Meals included: Breakfast



Day 20



Christchurch to Aoraki-Mt Cook National Park

Drive through the heart of the South Island, crossing the vast Canterbury plains. Catch your breath in Geraldine before continuing through Fairlie. Ascending Burkes pass you'll come to the picturesque town of Lake Tekapo. Follow the road and take in the view of Aoraki-Mt Cook (New Zealand's tallest mountain) from the shores of Lake Pukaki, known for its glacier fed turquoise blue colour. Continue along the lake to your final destination Aoraki-Mt Cook Village.

Walking Tracks in Aoraki-Mt Cook National Park

Aoraki-Mt Cook Village offers a variety of short scenic walks suitable for all ages and fitness levels. Start your adventure at the Department of Conservation Information Centre, where you can learn about track conditions, local history, and the area's wildlife. Here are a few popular walks to explore: Bowen Bush Walk: 10-minute return Glencoe Walk: 10-minute return Red Tarns Track: 2-hour return Kea Point Walk: 2-hour return Sealy Tarns Track: 3 - 4 hours return Please be aware that at Aoraki/Mount Cook, you will need to pay for parking at the White Horse Hill car park. The cost is \$5 per hour or \$25 for the full day. A 20-minute free period is available for quick drop-offs.

Big Sky Stargazing

Mt Cook is far from the city lights and therefore has some of the darkest skies in New Zealand, perfect for viewing the night sky! Their fully trained guides are delighted to show you the beautiful southern night sky using the naked eye, state-of-the-art astronomy telescopes, and binoculars at the outdoor viewing platform. If the weather is not favourable, then there will be an indoor alternative featuring New Zealand's first full-dome digital Planetarium, high-definition video images on a suspended 9m wide x 4.5m high full dome. Unleash your imagination as you discover the night sky, including the Southern Cross, seasonal ecliptic objects, planets, star clusters, moons, distant galaxies, and even our very own galaxy, the spectacular Milky Way!

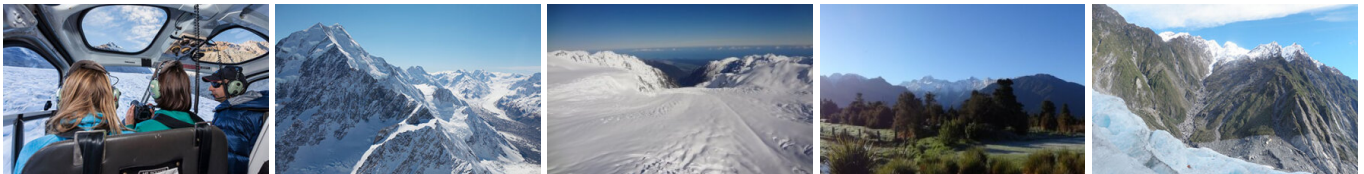
Your accommodation: Hermitage Hotel, Aoraki Wing Premium

The Hermitage Hotel ringed by magnificent snow-capped peaks of the Southern Alps, is a world-renowned tourist destination and has been an icon of superior accommodation and dining since 1884.

Meals included: Breakfast



Day 21



SUGGESTED ACTIVITY - Mountain High Scenic Flight with The Helicopter Line

The premier flight over this amazing alpine region with vast snowfields, glaciers and a spectacular view of New Zealand's highest peak, Aoraki/Mount Cook. Land high above glaciers and experience what it feels like to stand in snow amongst the mountains. Traverse the Southern Alps to view the mighty Fox and Franz Josef Glaciers as they journey slowly down towards the native rainforests and the Tasman Sea on the rugged West Coast. It is important to read and understand the risks associated with this activity. A full risk disclosure can be found [here](#).

Aoraki Mt Cook National Park to Dunedin

Leave Aoraki Mt Cook National Park and travel past Twizel, one of the locations for the Lord of the Rings films. Go through Omarama, the gliding capital of New Zealand. Continue down the Waitaki Valley follow the hydro power generating system to the rural town of Kurow, home to the divine Valli Wines. Stop for a sip or continue on to the east coast. Stretch your legs in Oamaru, known for its white stone buildings constructed with the local Oamaru Stone and Steampunk influence. If you were a little late off the mark this morning you may get the chance to see the blue penguins come ashore at dusk. Continue south down the coast to Moeraki, and take a detour towards the beach to see the Moeraki Boulders, a unique geological feature well worth a look. As you arrive in Dunedin, take in the city's Edwardian and Scottish heritage reflected in the buildings around the city centre The Octagon.

Dunedin

Dunedin, known in Māori as Ōtepoti, is referred to as the "Edinburgh of the Southern Hemisphere". The city has a rightly deserved reputation as one of the best-preserved Victorian and Edwardian cities in the Southern Hemisphere. Of particular note is Dunedin Railway Station, built 1904 - 1906, and St Paul's Cathedral in the Octagon. The Otago Museum is renowned for its Māori and Pacific Island collections and natural history displays. A visit to the Speights, New Zealand's oldest brewery, is also considered a must while in Dunedin. The Botanic Gardens is a great spot and at the right time of year, you can witness the Rhododendron Dell in bloom. The Otago Peninsula is the only home in the world to the Northern Royal Albatross. The Peninsula can be visited for the day from Dunedin and the stunning harbor landscape and wildlife are worth exploring. High among the rolling hills of the Peninsula is Larnach Castle, the grand home of an early politician. Construction of the castle began in 1871 and was completed 12 years later. From here, views out to sea and back towards the city emphasize the singular beauty of Dunedin and its jewel-like harbor.

Dunedin Botanic Gardens - Suggestion

The Dunedin Botanic Garden is New Zealand's first botanic garden and is also a Garden of International Significance. It is home to more than 6,800 plant species and is spread across both rolling hills and flatlands. Wild native bellbirds, wood pigeons and tui can be heard on most days. The garden occupies 30.4 hectares in North Dunedin. Its varying range of floriculture and horticultural includes roses, herbaceous and perennial borders, a rock garden, New Zealand native plants and four hectares of Rhododendron Dell. It also houses a New Zealand Native plant collection including cultivation of rare and endangered native plant species.

Your accommodation: Scenic Hotel Dunedin City

Just two blocks from the Octagon in the heart of the city, Scenic Hotel Dunedin City is close to shops, parks and the best city attractions and services. The hotel provides excellent 4-star accommodation to Dunedin's visitors.

Meals included: Breakfast



Day 22



Wildlife Peninsula Encounter Tour and Wildlife Cruise with Monarch

Join a small-group bus tour led by a local guide across the Otago Peninsula, featuring stunning harbour views, rural landscapes, and unique wildlife. Visit a remote beach to spot sea lions, take a Monarch Wildlife Cruise to see albatross, seals, and rare seabirds, and explore a Yellow-eyed Penguin conservation reserve with hidden viewing hides. This unforgettable journey blends breathtaking scenery with intimate wildlife encounters before a relaxed return to Dunedin.

Explore Otago Peninsula

The Otago Peninsula extends from the southern side of Otago Harbour, just minutes from the city center. A short drive takes you past scenic bays and picturesque farmland. Renowned as one of New Zealand's premier eco-tourism destinations, the peninsula is home to the iconic Royal Albatross, with Taiaroa Head at its tip hosting the world's only mainland breeding colony of these majestic birds. In addition to the albatross, the area is rich in wildlife, including New Zealand fur seals, sea lions, and rare yellow-eyed penguins. You can explore a variety of walking tracks, enjoy breathtaking views, and stunning beaches, and visit the magnificent Larnach Castle, a cultural highlight of the region.

Your accommodation: Scenic Hotel Dunedin City

Just two blocks from the Octagon in the heart of the city, Scenic Hotel Dunedin City is close to shops, parks and the best city attractions and services. The hotel provides excellent 4-star accommodation to Dunedin's visitors.

Meals included: Breakfast



Day 23



Dunedin to Te Anau (via Invercargill)

The drive to Te Anau takes you through classic Southland farming scenery. Head off-the-beaten-track today and follow the coastline instead of the inland route. Go through The Catlins area and be sure to take a detour to Kaka Point to view its majestic cliffs and pounding surf. If time permits, keep driving towards Nugget Point, iconic for its steep headland with a lighthouse perched atop. Continue through Invercargill to Riverton and Colac Bay, and then head north to Manapouri. From here you can embark on a day or overnight cruise to the remote Doubtful Sound, renowned for its natural beauty. Just a short way further will bring you to your lakeside destination of Te Anau, gateway to Fiordland National Park and Milford Sound.

SUGGESTED ACTIVITY - Te Anau Glowworm Caves with RealNZ

Begin your Te Anau Glowworm experience with a scenic cruise across Lake Te Anau on board the luxury catamaran, Luminosa, to the western side of the lake. On arrival, you'll enter the caves through Cavern House, where informative displays detail the history of this 12,000 year old underground network. You'll then explore by limestone pathway while your guide points out hidden whirlpools, sculpted rock formations, and a rushing underground waterfall. See a magical display of thousands of glowworms as you glide through the darkness in a small boat.

Your accommodation: Distinction Te Anau Hotel & Villas

The Te Anau Hotel and Villas offers a range of accommodation from hotel rooms and suites to villas. Ideally located on the lake front this hotel is just a few minutes stroll from the shops, cafes and many activities Te Anau has to offer.

Meals included: Breakfast



Day 24



Te Anau to Milford Sound, returning to Te Anau

The magnificent Milford Road leading to Milford Sound offers some of the most beautiful and iconic scenery in the country. Countless photo opportunities mean this drive should not be rushed. From crystal clear lakes and towering mountains to lush glacier-formed meadows, this area is abundant with picture-perfect scenes. Continue on through the Homer Tunnel, an engineering marvel at 1219 meters long. Arriving in the village of Milford, you will be greeted with an amazing view of Mitre Peak. A day cruise into the heart of the sound is not to be missed. You'll learn about how this magnificent area was formed and experience the wonder of the falls that line the Fjord before back-tracking the way you came.

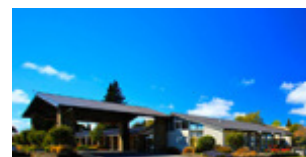
Milford Sound Lunch Cruise on the Fiordland Jewel with Fiordland Discovery

Embark on an unforgettable Milford Sound adventure aboard a boutique catamaran, the Fiordland Jewel. Designed for ultimate comfort and breathtaking views, our small group cruise offers cozy lounges, dining booths, and panoramic sea vistas from the main saloon or the outdoor dining area. Regardless of the weather, you'll be immersed in the stunning scenery and nature that surround you. Our knowledgeable crew will share fascinating stories and point out wildlife such as seals, penguins, and dolphins along the way. Enjoy a delicious lunch prepared by the onboard chef as you sail through the fiord. With ample outdoor space, you can fully experience the tranquillity and beauty of Milford Sound.

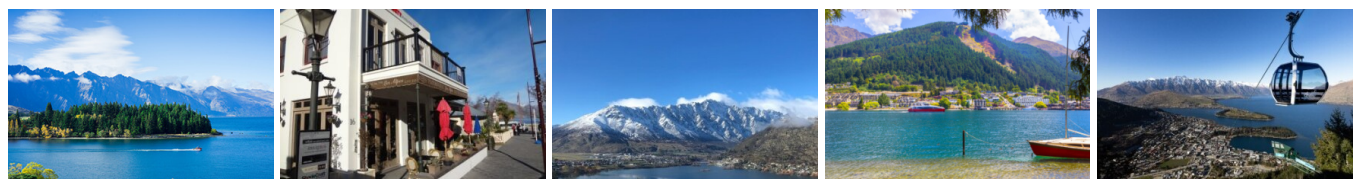
Your accommodation: Distinction Te Anau Hotel & Villas

The Te Anau Hotel and Villas offers a range of accommodation from hotel rooms and suites to villas. Ideally located on the lake front this hotel is just a few minutes stroll from the shops, cafes and many activities Te Anau has to offer.

Meals included: Breakfast, Lunch



Day 25



Te Anau to Queenstown

Journey across expansive tussock lands en route to Queenstown. Pass through Mossburn, renowned as the deer capital of New Zealand, and continue through the picturesque Southland countryside. As the road begins to trace the edge of Lake Wakatipu, marvel at the breathtaking views from the Devil's Staircase. Finally, approach Queenstown, the adventure capital of New Zealand, with the Remarkables mountain range standing majestically in the backdrop.

Queenstown

Queenstown known in Māori as Tāhuna, is home to many adrenaline-inducing activities. Nestled on the shores of Lake Wakatipu, this alpine town has very distinct seasons, and most adrenaline-filled activities can be accessed year-round. Queenstown is home to jet boating, bungy jumping, rafting, skydiving, paragliding, and even indoor thrills. If you want that rush - head out on the Shotover Jet, dive off the Nevis Bungy, freefall on the Canyon Swing, or Zip line the Gondola. While arguably the brightest gem in New Zealand's crown, Queenstown offers far more than an action-packed getaway. If you're looking for a slightly slower pace, there are plenty of recreational activities, including hiking and biking trails to explore, guided tours, boat cruises, scenic flights, or spa and wellness options to help you get away. Head to the lakefront, eat at one of the al fresco eateries, and soak up the local vibes; catch a ride on the iconic 100-year-old steamship the TSS Earnslaw; or take the Skyline Gondola and enjoy bird's-eye views of the Remarkables mountain ranges and Lake Wakatipu. Pack a picnic and go for a hike, only 20 minutes from Central Queenstown, Coronet Peak opens for summer sightseeing. You can ride the Peak Gondola to the top for panoramic views and hike the trails, or go for a bike ride on many excellent biking trails. In winter, Queenstown becomes a world-class winter resort, with four ski areas and a range of activities, bars, restaurants, and ways to relax and unwind.

TSS Earnslaw Cruise and Walter Peak Gourmet BBQ Dinner

Enjoy a quintessential Kiwi experience, a delicious gourmet BBQ buffet meal, and a farm demonstration in a stunning lakeside setting. Take in the stunning views of Lake Wakatipu and its surroundings as you cruise across the lake to the historic Walter Peak high country farm aboard the TSS Earnslaw Steamship. Enjoy the ambiance of the heart of the stately homestead while your Colonel's Homestead Restaurant chef prepares a gourmet BBQ dinner. Your seasonal menu includes an extensive selection of local New Zealand produce, including succulent meats and a selection of delicious vegetables and salads. Complete your meal with your choice of delicious desserts, or New Zealand cheeses. After dinner, watch the farm dogs in action with a sheep-herding demonstration and say hello to the other farm animals. Finally, cruise home under the southern stars and enjoy the fresh night air as the lights of Queenstown draw ever closer.

Your accommodation: Queenstown Park Boutique Hotel

Queenstown Park Hotel is a boutique hotel with a modern romantic style in the heart of New Zealand's adventure capital. Set in peaceful parkland, savour views of Queenstown's majestic mountains. Enjoy easy access to the vibrant town centre where shopping, cafes and nightlife nestled on the shores of spectacular Lake Wakatipu.

Meals included: Breakfast, Dinner



Day 26



Explore Queenstown

Well-known as New Zealand's 'adventure capital', Queenstown is home to a range of adventures, from the world's first and most famous bungy jumps to jet boat thrills, white-water rafting, and skydiving. However, Queenstown offers far more than a fast-paced, action-packed holiday. Settled on the shores of beautiful Lake Wakatipu beneath a soaring panorama of the Remarkables Mountain Range, this alpine town is surrounded by many historic, gastronomic, and scenic wonders. Take a stroll through the beautiful lakefront parks and gardens, browse through market stalls on weekends, dine in wonderful al-fresco restaurants, or ride on the 100-year-old historic Steamship - TSS Earnslaw to Walter Peak Station. Take the Queenstown Gondola up to Bob's Peak and soak up the panoramic views of the magnificent lake and mountain ranges. And after all of that, if you do want the adrenaline rush, Queenstown is known for taking your pick from the Shotover Jet, Canyon Swing, Zipline, Luge, or Heli-hike.

Wilderness Jet Experience with Dart River Safaris

Journey deep into the heart of the world-renowned Mt Aspiring National Park, where myth, heritage, and fantasy come to life. As one of Queenstown's most exhilarating activities, the Wilderness Jet adventures on a spectacular journey deep into the heart of the world-renowned Mount Aspiring National Park. It is important you read and understand the risks associated with this activity. For more information please see here.

Queenstown Skyline Gondola Ride

Hop aboard the Skyline Gondola - the steepest cable car lift in the Southern Hemisphere! From which you can take in the awe-inspiring views of this spectacular landscape. Sit back and relax as you enjoy panoramic views of The Remarkables, Walter Peak, Cecil Peak, Coronet Peak and the magnificent Lake Wakatipu.

Your accommodation: Queenstown Park Boutique Hotel

Queenstown Park Hotel is a boutique hotel with a modern romantic style in the heart of New Zealand's adventure capital. Set in peaceful parkland, savour views of Queenstown's majestic mountains. Enjoy easy access to the vibrant town centre where shopping, cafes and nightlife nestled on the shores of spectacular Lake Wakatipu.

Meals included: Breakfast



Day 27



Queenstown to Franz Josef Glacier via Wānaka

From Queenstown you'll cross the Crown Range, the highest sealed road in New Zealand to arrive in the Alpine town of Wānaka, gateway to Mt Aspiring National Park. Skirting the shores of both Lake Wanaka and Hawea, you will enter the small town of Makarora. Stop at Blue Pools for a 1-hour return walk through the native beech forest to a glacier-fed swimming hole. Continue on through the remote seaside settlement of Haast before heading up the wild West Coast highway you pass through ancient temperate rainforests while getting sneak peeks of the wild coast beaches occasionally. Keep heading North and be sure to enjoy the view of the ever-changing towering snowcapped Southern Alps Mountain Range. Fox Glacier welcomes you first, then comes your destination for the night Franz Josef township.

Franz Josef

Franz Josef, named after both the local village and the nearby glacier, holds special significance in Māori culture as "Ko Roimata o Hine Hukatere" – The Tears of the Ice Maiden. This rare glacier is one of only three in the world that descends from alpine heights into a temperate rainforest, almost reaching sea level. New Zealand is home to two of these unique glaciers, Franz Josef and Fox Glacier, both highly accessible and popular with visitors. The best ways to experience the glacier are through scenic flights or, for the adventurous, a heli-hike. You can also enjoy glacier views with a short drive from the village and walking tracks. Beyond the glacier, Franz Josef offers a wealth of adventure activities and beautiful forest and alpine walks, making it a must-visit destination.

Your accommodation: Legacy Te Waonui Hotel Franz Josef

Nestled amongst native West Coast rainforest at Franz Josef is a very special five-star retreat. Designed with utmost care of its precious environment, guests at Te Waonui Forest Retreat will find themselves encircled by rainforest and accommodated in natural and sustainable luxury.

Meals included: Breakfast, Dinner



Day 28



Franz Josef Glacier Helihiike with Franz Josef Glacier Guides

After a thrilling scenic flight, high above the rugged terrain, you will land on the glacier, ready to undertake a guided glacier hike. Your friendly guide will lead you through some of the most pristine and awe-inspiring glacial scenery in the world. Your guide will choose your route carefully as you go and, with an eye for the most spectacular ice formations, you'll soon be making your way through an extraordinary landscape of towering peaks and glistening blue ice. It is important you read and understand the risks associated with this activity prior to travel. For more information please see here.

One Hour Private Tub with Waiho Hot Tubs

Relax and unwind in the soothing comfort of fresh, warm water and aromatic wood smoke. Enjoy your own private tubs, nestled in a lush rainforest setting on New Zealand's West Coast. These wood-fired hot tubs combine the soothing comfort of warm water with the unique atmosphere of wood smoke to give you an unforgettable experience.

Your accommodation: Legacy Te Waonui Hotel Franz Josef

Nestled amongst native West Coast rainforest at Franz Josef is a very special five-star retreat. Designed with utmost care of its precious environment, guests at Te Waonui Forest Retreat will find themselves encircled by rainforest and accommodated in natural and sustainable luxury.

Meals included: Breakfast, Dinner



Day 29



Franz Josef to Greymouth Train Station (Return Rental Car)

Head north along the mighty West Coast highway you pass through ancient temperate rainforests while getting sneak peeks of the wild coast beach occasionally. Whataroa is the next town where you can see one of the world's rarest birds, the Kōtuku - White Heron. The Kōtuku nest at the Waitangi Roto Nature Reserve, only accessible with a guided tour from October to March. The next town is Ross which is the site of an old gold mining settlement where the local information centre offers you the chance to pan for gold. Hokitika is a great place to explore craft and gift stores and head to the coast and take in the endless sea views. The Pounamu-Greenstone on offer in Hokitika is probably some of the best you will see in the country. Continue on to Greymouth, the largest town on the West Coast and the starting point for the next leg of your journey the TranzAlpine Scenic Train. Drop your rental car at the Greymouth Train Station depot located at the train station building before boarding your train to Christchurch.

Return your rental car

Return your rental vehicle to your designated depot before your next adventure.

TranzAlpine Scenic Train: Greymouth to Christchurch

Considered one of the world's great train journeys, the TranzAlpine Scenic Train takes you from Greymouth to Christchurch. Travel across the South Island from the west to the east coast through Arthur's Pass National Park. From the comfort of your carriage see lush beech forest, deep river valleys and the spectacular peaks of the Southern Alps. Descend to the windswept Canterbury Plains before arriving in the city of Christchurch.

Shared Transfer from Christchurch Train Station to Christchurch CBD Accommodation with Christchurch Touring Company

On arrival at the Christchurch railway station, you will be met by a driver and transferred to your Christchurch accommodation.

Your accommodation: The Observatory Hotel

The Observatory Hotel is situated in the Christchurch city center, short walk to The Art Centre, restaurants & bars. It brings contemporary style to the heart of a precinct rich with history. Every room offers unique experience, each being individually designed providing luxury, art and comfort.

Meals included: Breakfast



Day 30



Private Transfer from Christchurch Accommodation to Christchurch International Airport with Christchurch Touring Company

A private transfer will collect you from your accommodation and transfer you to Christchurch International Airport in time for your departing flight.

Farewell from Aotearoa / New Zealand

Bid farewell to Aotearoa / New Zealand, taking with you unforgettable memories of its breathtaking landscapes and incredible adventures. In Māori, it is said mā te wā, which is not goodbye, it is see you soon!

Tour details

Departures:	Daily
Tour type:	Self Drive Tour (FTNZ ONLY)
Starts:	Auckland
Finishes:	Christchurch
Tour length:	30
Accommodation:	Hotel 4 star
Car/transport type:	

Accommodation summary

Day 1	M Social Hotel Auckland
Day 2	M Social Hotel Auckland
Day 3	Copthorne Hotel and Resort Bay of Islands
Day 4	Copthorne Hotel and Resort Bay of Islands
Day 5	Tahi Lodge
Day 6	Sovereign Pier On The Waterways
Day 7	Sovereign Pier On The Waterways
Day 8	On the Point
Day 9	On the Point
Day 10	Swiss-Belboutique Napier
Day 11	Swiss-Belboutique Napier
Day 12	Bolton Hotel Wellington
Day 13	Bolton Hotel Wellington
Day 14	Abel Tasman Lodge
Day 15	Abel Tasman Lodge
Day 16	Sudima Hotel Kaikōura
Day 17	Sudima Hotel Kaikōura
Day 18	The Observatory Hotel
Day 19	The Observatory Hotel
Day 20	Hermitage Hotel, Aoraki Wing Premium
Day 21	Scenic Hotel Dunedin City
Day 22	Scenic Hotel Dunedin City
Day 23	Distinction Te Anau Hotel & Villas
Day 24	Distinction Te Anau Hotel & Villas
Day 25	Queenstown Park Boutique Hotel
Day 26	Queenstown Park Boutique Hotel
Day 27	Legacy Te Waonui Hotel Franz Josef
Day 28	Legacy Te Waonui Hotel Franz Josef
Day 29	The Observatory Hotel