



## Lakes, Mountains and Glaciers Tour

Begin your journey in Christchurch and venture into the heart of the Southern Alps. In Aoraki - Mount Cook National Park, marvel at some of the clearest night skies in New Zealand with a magical stargazing experience. Wake to views of Aoraki - Mount Cook, the country's tallest peak, and enjoy a scenic flight over this rugged alpine wonderland, uncovering its rich stories and legends. Savour a premium dining experience at the Queenstown Skyline Gondola, where breathtaking alpine vistas surround you. Feel the thrill of the iconic Shotover Jet, navigating narrow canyons at high speed. In the evening, cruise aboard the historic TSS Earnslaw Steamship to Walter Peak, indulging in a gourmet dinner. Next, journey to Franz Josef and unwind in a tranquil rainforest retreat, complete with your own private hot tub. Conclude your bespoke South Island adventure aboard the iconic TranzAlpine Train, traversing dramatic mountain ranges, lush rainforests, and rolling plains as you return to Christchurch, your final destination. This curated escape offers breathtaking scenery, and personalised experiences, making it your journey to remember.

Starts in: Christchurch  
Finishes in: Christchurch  
Length: 7days / 6nights  
Accommodation: Hotel 4 star  
Can be customised: Yes

This itinerary can be customised to suit you perfectly. We can add more days, remove days, change accommodations, mix it up, add activities to suit your interests or simply design and create something from scratch. Call us today to get your custom New Zealand itinerary underway.



### Inclusions:

Includes: Late model rental cars

Includes: Unlimited kms

Included activity: Private Transfer Christchurch International Airport to Christchurch Accommodation

Included activity: Christchurch Trams

Included activity: Big Sky Stargazing

Included activity: Gondola and Premium Buffet Dinner Experience with Skyline Queenstown  
Included activity: TSS Earnslaw Cruise and Walter Peak Gourmet BBQ Dinner

Included activity: TranzAlpine Scenic Train: Greymouth to Christchurch Scenic Plus with Great Journeys NZ

Included activity: Private Transfer from Christchurch Accommodation to Christchurch International Airport with Christchurch Touring Company

Includes: Fully inclusive rental car insurance (excess may apply)

Includes: Afterhours emergency support while touring

Included activity: Electronic Travel Guide and In-Country Support App

Included activity: The Visitor Promise - Cultural Learning Course

Included activity: Mountain High Scenic Flight with The Helicopter Line

Included activity: Shotover Canyon Jet Boat Ride

Included activity: One Hour Private Tub with Waiho Hot Tubs

Included activity: Private Transfer Christchurch Train Station to Accommodation

: 6 breakfasts, 1 lunch, 2 dinners

## Day 1



### Private Transfer Christchurch International Airport to Christchurch Accommodation

On arrival, you will be met by a private driver and transferred to your Christchurch accommodation.

### Welcome to Christchurch City

New Zealand's garden city is steadily being transformed into a vibrant urban destination. Encompassing a large green belt, it is known for its wide tree lined avenues and lush gardens. A great way to explore the city or easy way to see the sights or ride the historic trams across town to the renowned botanic gardens and the unique cardboard Transitional Cathedral, that's right it is built of cardboard!

### Christchurch Trams

Trams played an important role in transporting the people of Christchurch until 1954 when they were phased out. In 1995 the city council and Tramway Historical Society brought the beautiful trams back to the city centre for the public to enjoy. Take the delightful journey throughout the central city, including sights such as Riverside Market, the Avon River, the Arts Precinct including the Christchurch Art Gallery and Arts Centre, the Botanic Gardens, and New Regent Street with its Spanish-style buildings and sunny cafes. A commentary is given by the tram driver and you can hop on and off at the various stops as you please throughout the day. It's a great way to see and explore the main city centre attractions.

### Your accommodation: The Observatory Hotel

The Observatory Hotel is situated in the Christchurch city center, short walk to The Art Centre, restaurants & bars. It brings contemporary style to the heart of a precinct rich with history. Every room offers unique experience, each being individually designed providing luxury, art and comfort.



## Day 2



### Collect Rental Car

This tour's from price includes an intermediate-sized vehicle, setting you up for comfortable travels. Yet, we understand every adventure is unique! Feel free to select the perfect wheels from our incredible collection of rental cars, spanning from economy hatchbacks to premium SUVs.

### Christchurch to Aoraki-Mt Cook National Park

Drive through the heart of the South Island, crossing the vast Canterbury plains. Catch your breath in Geraldine before continuing through Fairlie. Ascending Burkes pass you'll come to the picturesque town of Lake Tekapo. Follow the road and take in the view of Aoraki-Mt Cook (New Zealand's tallest mountain) from the shores of Lake Pukaki, known for its glacier fed turquoise blue colour. Continue along the lake to your final destination Aoraki-Mt Cook Village.

### SUGGESTED ACTIVITY - Glacier Explorers

Experience 500-year-old icebergs up close on the Aoraki-Mt Cook terminal lake. The Glacier Explorers tour is the only one of its kind in New Zealand and one of only three in the world! Very few glaciers terminate into lakes and even fewer of them are accessible. See towering ice cliffs and floating icebergs from the safety of a specially designed boat. These boats provide a safe way to view unseen and inaccessible areas of New Zealand's largest glacier The Tasman.

## Walking Tracks in Aoraki-Mt Cook National Park

Aoraki-Mt Cook Village offers a variety of short scenic walks suitable for all ages and fitness levels. Start your adventure at the Department of Conservation Information Centre, where you can learn about track conditions, local history, and the area's wildlife. Here are a few popular walks to explore: Bowen Bush Walk: 10-minute return Glencoe Walk: 10-minute return Red Tarns Track: 2-hour return Kea Point Walk: 2-hour return Sealy Tarns Track: 3 - 4 hours return Please be aware that at Aoraki/Mount Cook, you will need to pay for parking at the White Horse Hill car park. The cost is \$5 per hour or \$25 for the full day. A 20-minute free period is available for quick drop-offs.

---

## Big Sky Stargazing

Mt Cook is far from the city lights and therefore has some of the darkest skies in New Zealand, perfect for viewing the night sky! Their fully trained guides are delighted to show you the beautiful southern night sky using the naked eye, state-of-the-art astronomy telescopes, and binoculars at the outdoor viewing platform. If the weather is not favourable, then there will be an indoor alternative featuring New Zealand's first full-dome digital Planetarium, high-definition video images on a suspended 9m wide x 4.5m high full dome. Unleash your imagination as you discover the night sky, including the Southern Cross, seasonal ecliptic objects, planets, star clusters, moons, distant galaxies, and even our very own galaxy, the spectacular Milky Way!

---

## Your accommodation: Hermitage Hotel, Aoraki Wing Premium

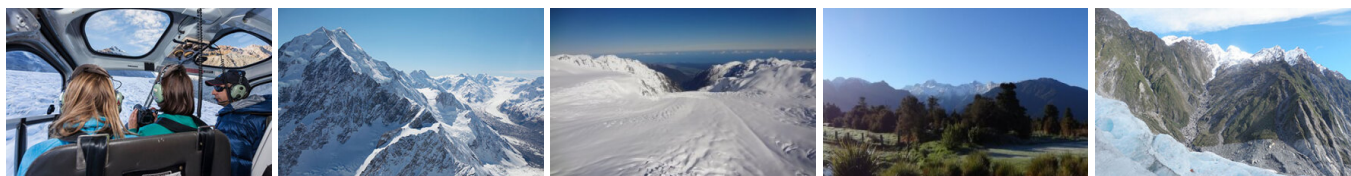
The Hermitage Hotel ringed by magnificent snow-capped peaks of the Southern Alps, is a world-renowned tourist destination and has been an icon of superior accommodation and dining since 1884.

Meals included: Breakfast



---

## Day 3



### Mountain High Scenic Flight with The Helicopter Line

The premier flight over this amazing alpine region with vast snowfields, glaciers and a spectacular view of New Zealand's highest peak, Aoraki/Mount Cook. Land high above glaciers and experience what it feels like to stand in snow amongst the mountains. Traverse the Southern Alps to view the mighty Fox and Franz Josef Glaciers as they journey slowly down towards the native rainforests and the Tasman Sea on the rugged West Coast. It is important to read and understand the risks associated with this activity. A full risk disclosure can be found [here](#).

---

## Aoraki Mt Cook National Park to Queenstown

Leaving the alpine region of Aoraki Mt Cook, you'll travel through the lakeside town of Twizel, then a little further to Omarama the gliding capital of New Zealand. Continue on over the Lindis Pass, one of New Zealand's highest roads with a summit of 971 metres. Arrive in the quaint village of Tarras, then continue on a short way to the historic Bendigo Reserve, one of Otago's original gold mining settlements. Follow the road to Cromwell, and keep going through the sheer cliffs of the Kawarau Gorge towards Gibbston, one of New Zealand's premier wine growing regions. See the historic Kawarau Bridge where you can bungy jump or relax and watch others take the plunge. Approaching Queenstown, the Remarkables mountain range comes into view as you arrive into the adventure capital of New Zealand.

---

## Queenstown

Queenstown known in Māori as Tāhuna, is home to many adrenaline-inducing activities. Nestled on the shores of Lake Wakatipu, this alpine town has very distinct seasons, and most adrenaline-filled activities can be accessed year-round. Queenstown is home to jet boating, bungy jumping, rafting, skydiving, paragliding, and even indoor thrills. If you want that rush - head out on the Shotover Jet, dive off the Nevis Bungy, freefall on the Canyon Swing, or Zip line the Gondola. While arguably the brightest gem in New Zealand's crown, Queenstown offers far more than an action-packed getaway. If you're looking for a slightly slower pace, there are plenty of recreational activities, including hiking and biking trails to explore, guided tours, boat cruises, scenic flights, or spa and wellness options to help you get away. Head to the lakefront, eat at one of the al fresco eateries, and soak up the local vibes; catch a ride on the iconic 100-year-old steamship the TSS Earnslaw; or take the Skyline Gondola and enjoy bird's-eye views of the Remarkables mountain ranges and Lake Wakatipu. Pack a picnic and go for a hike, only 20 minutes from Central Queenstown, Coronet Peak opens for summer sightseeing. You can ride the Peak Gondola to the top for panoramic views and hike the trails, or go for a bike ride on many excellent biking trails. In winter, Queenstown becomes a world-class winter resort, with four ski areas and a range of activities, bars, restaurants, and ways to relax and unwind.

---

## Skyline Gondola Queenstown and Premium Buffet Dinner Experience

With breathtaking views across Queenstown and Lake Wakatipu, the Skyline Complex is a must-do. Catch the fully enclosed gondola to the summit for a remarkable panorama of the city surrounds. Wander the outdoor viewing decks then enjoy a gourmet buffet meal in the Stratosphere Restaurant.

---



## Your accommodation: Scenic Suites Queenstown

Scenic Suites Queenstown offers guests exquisite style and comfort, with a selection of rooms having spectacular views over Lake Wakatipu and the Southern Alps. The hotel prides itself on its 4-star hospitality that will make your stay in Queenstown even more memorable.

Meals included: Breakfast, Dinner



---

## Day 4



### Explore Queenstown

Well-known as New Zealand's 'adventure capital', Queenstown is home to a range of adventures, from the world's first and most famous bungy jumps to jet boat thrills, white-water rafting, and skydiving. However, Queenstown offers far more than a fast-paced, action-packed holiday. Settled on the shores of beautiful Lake Wakatipu beneath a soaring panorama of the Remarkables Mountain Range, this alpine town is surrounded by many historic, gastronomic, and scenic wonders. Take a stroll through the beautiful lakefront parks and gardens, browse through market stalls on weekends, dine in wonderful al-fresco restaurants, or ride on the 100-year-old historic Steamship - TSS Earnslaw to Walter Peak Station. Take the Queenstown Gondola up to Bob's Peak and soak up the panoramic views of the magnificent lake and mountain ranges. And after all of that, if you do want the adrenaline rush, Queenstown is known for taking your pick from the Shotover Jet, Canyon Swing, Zipline, Luge, or Heli-hike.

---

### Shotover Jet Canyon Jet Boat Ride

Shotover Jet is the only company permitted to operate in the Shotover River Canyons. It's a thrilling ride! Skim past rocky outcrops at close range in your Shotover Jet 'Big Red', as you twist and turn through the narrow canyons at breathtaking speeds. And a major highlight - hold tight for the world-famous Shotover Jet full 360-degree spins! It is important you read and understand the risks associated with this activity. For more information please see [here](#).

---

### TSS Earnslaw Cruise and Walter Peak Gourmet BBQ Dinner

Enjoy a quintessential Kiwi experience, a delicious gourmet BBQ buffet meal, and a farm demonstration in a stunning lakeside setting. Take in the stunning views of Lake Wakatipu and its surroundings as you cruise across the lake to the historic Walter Peak high country farm aboard the TSS Earnslaw Steamship. Enjoy the ambiance of the heart of the stately homestead while your Colonel's Homestead Restaurant chef prepares a gourmet BBQ dinner. Your seasonal menu includes an extensive selection of local New Zealand produce, including succulent meats and a selection of delicious vegetables and salads. Complete your meal with your choice of delicious desserts, or New Zealand cheeses. After dinner, watch the farm dogs in action with a sheep-herding demonstration and say hello to the other farm animals. Finally, cruise home under the southern stars and enjoy the fresh night air as the lights of Queenstown draw ever closer.

---

## Your accommodation: Scenic Suites Queenstown

Scenic Suites Queenstown offers guests exquisite style and comfort, with a selection of rooms having spectacular views over Lake Wakatipu and the Southern Alps. The hotel prides itself on its 4-star hospitality that will make your stay in Queenstown even more memorable.

Meals included: Breakfast, Dinner



---

## Day 5



## Queenstown to Franz Josef Glacier via Wānaka

From Queenstown you'll cross the Crown Range, the highest sealed road in New Zealand to arrive in the Alpine town of Wānaka, gateway to Mt Aspiring National Park. Skirting the shores of both Lake Wanaka and Hawea, you will enter the small town of Makarora. Stop at Blue Pools for a 1-hour return walk through the native beech forest to a glacier-fed swimming hole. Continue on through the remote seaside settlement of Haast before heading up the wild West Coast highway you pass through ancient temperate rainforests while getting sneak peeks of the wild coast beaches occasionally. Keep heading North and be sure to enjoy the view of the ever-changing towering snowcapped Southern Alps Mountain Range. Fox Glacier welcomes you first, then comes your destination for the night Franz Josef township.

---

### Franz Josef

Franz Josef, named after both the local village and the nearby glacier, holds special significance in Māori culture as "Ko Roimata o Hine Hukatere" – The Tears of the Ice Maiden. This rare glacier is one of only three in the world that descends from alpine heights into a temperate rainforest, almost reaching sea level. New Zealand is home to two of these unique glaciers, Franz Josef and Fox Glacier, both highly accessible and popular with visitors. The best ways to experience the glacier are through scenic flights or, for the adventurous, a heli-hike. You can also enjoy glacier views with a short drive from the village and walking tracks. Beyond the glacier, Franz Josef offers a wealth of adventure activities and beautiful forest and alpine walks, making it a must-visit destination.

---

### SUGGESTED ACTIVITY - Twin Glacier Scenic Helicopter Flight with The Helicopter Line

A spectacular scenic flight soaring over two of New Zealand's most famous glaciers, Fox and Franz Josef. Landing at the head of one and view the incredible sight of this frozen river as it winds its way through ancient carved valleys. It is important to read and understand the risks associated with this activity. A full risk disclosure can be found [here](#).

---

### One Hour Private Tub with Waiho Hot Tubs

Relax and unwind in the soothing comfort of fresh, warm water and aromatic wood smoke. Enjoy your own private tubs, nestled in a lush rainforest setting on New Zealand's West Coast. These wood-fired hot tubs combine the soothing comfort of warm water with the unique atmosphere of wood smoke to give you an unforgettable experience.

---

### Your accommodation: Legacy Te Waonui Hotel Franz Josef

Nestled amongst native West Coast rainforest at Franz Josef is a very special five-star retreat. Designed with utmost care of its precious environment, guests at Te Waonui Forest Retreat will find themselves encircled by rainforest and accommodated in natural and sustainable luxury.

Meals included: Breakfast



---

## Day 6



### Franz Josef to Greymouth Train Station (Return Rental Car)

Head north along the mighty West Coast highway you pass through ancient temperate rainforests while getting sneak peeks of the wild coast beach occasionally. Whataroa is the next town where you can see one of the world's rarest birds, the Kōtuku - White Heron. The Kōtuku nest at the Waitangi Roto Nature Reserve, only accessible with a guided tour from October to March. The next town is Ross which is the site of an old gold mining settlement where the local information centre offers you the chance to pan for gold. Hokitika is a great place to explore craft and gift stores and head to the coast and take in the endless sea views. The Pounamu-Greenstone on offer in Hokitika is probably some of the best you will see in the country. Continue on to Greymouth, the largest town on the West Coast and the starting point for the next leg of your journey the TranzAlpine Scenic Train. Drop your rental car at the Greymouth Train Station depot located at the train station building before boarding your train to Christchurch.

---

### Return your rental car

Return your rental vehicle to your designated depot before your next adventure.

---

### TranzAlpine Scenic Train: Greymouth to Christchurch Scenic Plus with Great Journeys NZ

Great Journeys New Zealand's Scenic Plus carriage provides comfort and vast panoramic views, making our TranzAlpine scenic train journey the perfect way to explore coast-to-coast through the 'Great Divide' and the indomitable spine of mountains that partitions New Zealand's South Island. Scenic Plus offers an all-inclusive experience on the unique TranzAlpine scenic rail journey to invigorate all the senses! Feast your eyes on epic scenery while you savour regionally inspired cuisine paired with sumptuous wine and beer all from the comfort of your luxurious seat – a hosted dining experience like no other. Quite simply, we have done everything we can to ensure you feel at peace as you sink back in your seat and soak up the scenery.

---

## Private Transfer Christchurch Train Station to Accommodation

On arrival at the Christchurch train station, you will be met by a private driver and transferred to your accommodation.

---

### Your accommodation: The Observatory Hotel

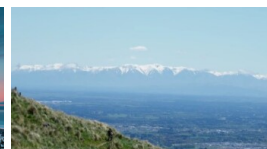
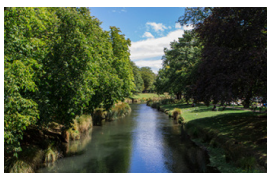
The Observatory Hotel is situated in the Christchurch city center, short walk to The Art Centre, restaurants & bars. It brings contemporary style to the heart of a precinct rich with history. Every room offers unique experience, each being individually designed providing luxury, art and comfort.

Meals included: Breakfast, Lunch



---

## Day 7



### Private Transfer from Christchurch Accommodation to Christchurch International Airport with Christchurch Touring Company

A private transfer will collect you from your accommodation and transfer you to Christchurch International Airport in time for your departing flight.

---

### Farewell from Aotearoa / New Zealand

Bid farewell to Aotearoa / New Zealand, taking with you unforgettable memories of its breathtaking landscapes and incredible adventures. In Māori, it is said mā te wā, which is not goodbye, it is see you soon!

---

---

## Tour details

|                     |                             |
|---------------------|-----------------------------|
| Departures:         | Daily                       |
| Tour type:          | Self Drive Tour (FTNZ ONLY) |
| Starts:             | Christchurch                |
| Finishes:           | Christchurch                |
| Tour length:        | 7                           |
| Accommodation:      | Hotel 4 star                |
| Car/transport type: |                             |

---

## Accommodation summary

|       |                                      |
|-------|--------------------------------------|
| Day 1 | The Observatory Hotel                |
| Day 2 | Hermitage Hotel, Aoraki Wing Premium |
| Day 3 | Scenic Suites Queenstown             |
| Day 4 | Scenic Suites Queenstown             |
| Day 5 | Legacy Te Waonui Hotel Franz Josef   |
| Day 6 | The Observatory Hotel                |