



Elegance of the South Tour

This premium South Island journey is an invitation to experience Aotearoa's majestic landscapes in absolute style. Designed for discerning travellers, this highly customizable itinerary features the best of New Zealand's resorts and lodges, ensuring seamless comfort and adventure. It's the perfect, stress-free introduction to New Zealand, blending five-star luxury with authentic Kiwi exploration.

Starts in: Queenstown
Finishes in: Queenstown
Length: 22days / 21nights
Accommodation: Luxury Lodges
Can be customised: Yes

This itinerary can be customised to suit you perfectly. We can add more days, remove days, change accommodations, mix it up, add activities to suit your interests or simply design and create something from scratch. Call us today to get your custom New Zealand itinerary underway.



Inclusions:

Includes: Late model rental cars

Includes: Unlimited kms

Included activity: Electronic Travel Guide and In-Country Support App

Included activity: The Visitor Promise - Cultural Learning Course

Included activity: Heli-hike Abel Tasman with Wine, Art & Wilderness including lunch

Included activity: TranzAlpine Scenic Train: Greymouth to Christchurch

Included activity: Dinner at Camp Estate, Larnach Castle

Included activity: Dinner at Camp Estate, Larnach Castle

Included activity: Milford Premium Cruise with RealNZ

Included activity: Scenic Helicopter Transfer - Wanaka to Minaret Station Lodge

Included activity: Scenic Helicopter Transfer - Minaret Station Lodge to Wanaka

: 21 breakfasts, 6 lunches, 13 dinners, 2 special dinners

Includes: Fully inclusive rental car insurance (excess may apply)

Includes: Afterhours emergency support while touring

Included activity: Private Transfer Queenstown Airport to Roki Collection Queenstown

Included activity: Ocean Safari Whale Watching Flight with South Pacific Helicopters

Included activity: Private Transfer Christchurch Train Station to Accommodation

Included activity: Private Transfer Accom to Europcar Airport Depot with Christchurch Touring

Included activity: Penguin Tour with The Opera

Included activity: Half Day Ben Lomond High Country Experience with Black NZ - Lunch Included

Included activity: The Original Onsen Evening Session

Included activity: One Hour Private Tub with Waiho Hot Tubs

Included activity: Franz Josef Glacier Adventure with Franz Josef Glacier Guides - Lunch Included

Day 1



Private Transfer Queenstown Airport to Roki Collection Queenstown

On arrival you will be met by a Roki Collection Queenstown private driver and delivered to your accommodation.

Welcome to Queenstown

Renowned for its adrenaline inducing activities Queenstown is synonymous with adventure. Parked on the shores of Lake Wakatipu this small alpine town is nestled below soaring vistas of The Remarkables Mountain Range. While arguably the brightest gem in New Zealand's crown, Queenstown offers far more than an action-packed getaway. Spend time on the Gibbston wine trail and end with a meal at Michelin star chef Josh Emett's restaurant, Rata. Take a trip down memory lane on a 100 year old steamship the TSS Earnslaw. Soak in the scenery on your walk around the lake, or venture further afield into Fiordland National Park. Head over the hill to resort town Wanaka, or re-live scenes from Lord Of The Rings by four wheel drive. But - if you really do want that rush - head out on the Shotover Jet, dive off the Nevis Bungy, freefall on the Canyon swing or Zip line the Gondola. Just be sure it's done on an empty stomach & don't say we didn't warn you!

Your accommodation: ROKI Collection Queenstown

Named after the Te Reo Māori word for tranquility (Ro-Kee), Roki Collection Queenstown offers a serene sanctuary on the shores of Lake Wakatipu. This lakefront retreat features world-class dining, a rejuvenating spa, and elegantly designed rooms, creating a refined haven of luxury amidst the vibrant energy of Queenstown.



Day 2



Half Day Ben Lomond High Country Experience with Black NZ - Lunch Included

Begin your adventure at Ben Lomond Station, accessed through a private road leading you into a world of breathtaking landscapes. Your morning will be spent exploring the expansive grounds of the station, climbing the ridgeline to witness panoramic views of the Shotover River, Mt Dewar, and Skippers Canyon. With countless scenic stops along the way, your guide will share the rich history and captivating stories of the region, as you traverse grazing lands, native forests, lakes, and rivers, and visit old mining huts and settlements. After crossing several rivers, you'll arrive at Moonlight Lodge where a gourmet picnic lunch awaits, providing the perfect fuel for your afternoon adventures. Continue your exploration of this high country station with options to embark on nature walks through stunning Beech Forest, delve into the gold mining history (including a chance to try gold panning), or simply relax and soak in the serene surroundings before making your way back through the station to your accommodation. On select days, you may have the chance to meet John Foster, the owner of Ben Lomond Station. John will share insights into the area's farming practices, the station's history, and his experiences living in this remote part of New Zealand, offering a truly authentic glimpse into local life.

Your accommodation: ROKI Collection Queenstown

Named after the Te Reo Māori word for tranquility (Ro-Kee), Roki Collection Queenstown offers a serene sanctuary on the shores of Lake Wakatipu. This lakefront retreat features world-class dining, a rejuvenating spa, and elegantly designed rooms, creating a refined haven of luxury amidst the vibrant energy of Queenstown.

Meals included: Breakfast, Lunch



Day 3



SUGGESTED ACTIVITY - Sunrise Balloon Adventures

Experience sunrise over the lakes and mountains from the serenity of a hot air balloon. You'll float gently with the breeze, enjoying incredible panoramic views, and your flight is followed by a champagne-style breakfast at your landing spot. Flights are at dawn when the air is cool and calm, and in the right conditions, you can expect to see views of Coronet Peak and The Remarkables ski areas, Mount Aspiring in the Southern Alps and Mount Tutoko in Fiordland National Park. You can also see Lake Wakatipu, Lake Hayes, the Shotover and Kawarau rivers. Additionally, a bonus for many is the views of some Lord of the Rings scenes, such as The Ford of Bruinen, Dimrill Dale, The Gates of Argonath and The Pillars Of The Kings. Also visible is Mount Earnslaw, one of the great mountains seen in Isengard. The flight is for approximately 1 hour, and you will be standing for the duration of the flight.

Collect Rental Car

This tour's from price includes an intermediate-sized vehicle, setting you up for comfortable travels. Yet, we understand every adventure is unique! Feel free to select the perfect wheels from our incredible collection of rental cars, spanning from economy hatchbacks to premium SUVs.

Queenstown to Wanaka

Leaving Queenstown you'll drive over New Zealand's highest sealed road, the Crown Range before arriving into the resort town of Wanaka.

Wānaka

Nestled on the shores of one of New Zealand's largest lakes and framed by the stunning Southern Alps. Wānaka is an alpine village that perfectly blends adventure, breathtaking scenery, and a laid-back vibe. In winter, Wānaka transforms into a bustling hub as snow sports enthusiasts flock to its renowned ski fields, Treble Cone and Cardrona, as well as cross-country at Snow Farm. As the gateway to Mt Aspiring National Park, it offers endless opportunities for hikers, with trails winding through remote wilderness, majestic peaks, and serene river valleys. Closer to town, you'll find a network of scenic walking tracks, such as the popular Mount Iron Track, and from the lakefront, it is a short walk to "That Wanaka Tree". For thrill-seekers, Wānaka is an adrenaline playground, offering skydiving, paragliding, downhill biking, rock climbing, and jet boating.

Scenic Helicopter Transfer - Wanaka to Minaret Station Lodge

Accessible only by helicopter, we offer daily departures flying from our Queenstown and Wanaka heliports. This is not your normal hotel transfer. Flying through spectacular mountain valleys, over snow-capped peaks and across braided alpine rivers, the journey into Minaret Station is up there amongst some of the world's finest scenic flights. And this we call a transfer!

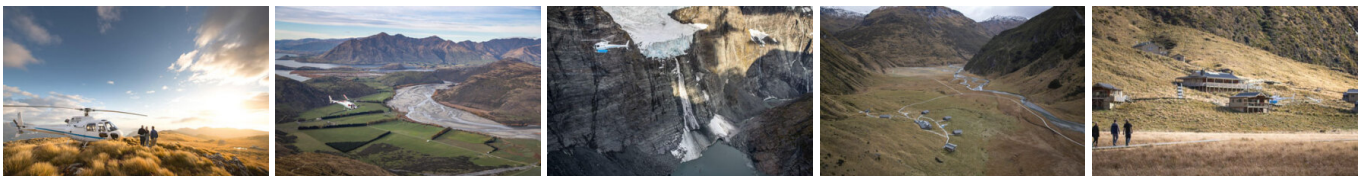
Your accommodation: Minaret Station Lodge

Minaret Lodge is a luxury retreat set in a remote glacial valley. Offering elegant accommodations, it blends modern comfort with alpine charm. Enjoy gourmet breakfasts, a cozy lounge, and personalised service.

Meals included: Breakfast, Dinner



Day 4



Minaret Station Lodge

Minaret Station Lodge offers a selection of off-the-beaten-path experiences for all interests and fitness levels, allowing you to make the most of your stay. Adventure activities include heli-skiing, heli-biking, heli-hiking, backcountry fishing or a guided hunting expedition. Wish to explore at a slower pace? Minaret Station also offers horse-riding tours or an exclusive look into the day-to-day operations of the 50,000-acre private farm. Talk to our friendly sales consultants about arranging a day experience, or, bask in the sun and enjoy the incredible scenes at Minaret Station.

Your accommodation: Minaret Station Lodge

Minaret Lodge is a luxury retreat set in a remote glacial valley. Offering elegant accommodations, it blends modern comfort with alpine charm. Enjoy gourmet breakfasts, a cozy lounge, and personalised service.

Meals included: Breakfast, Lunch, Dinner



Day 5



Scenic Helicopter Transfer - Minaret Station Lodge to Wanaka

You will be transferred by helicopter back to Wanaka.

Wanaka to Franz Josef

The route follows the shores of Lakes Wanaka and Hawea before you enter the village of Makarora, the gateway to Mt. Aspiring National Park. The Blue Pools, just outside Makarora, are a wonderful 30-minute walk through pristine native beech forest. Descending into Mt. Aspiring National Park and towards the Haast Pass, crashing rivers and waterfalls are around every corner. Crossing the Haast River you are now truly on the wild West Coast, a 600-kilometre stretch of bush, rainforest, and podocarp forest. First Fox Glacier welcomes you to the glacier region and Franz Josef township is just a further 45 minutes' drive over the impressive Fox Hills.

Franz Josef

Franz Josef, named after both the local village and the nearby glacier, holds special significance in Māori culture as "Ko Roimata o Hine Hukatere" – The Tears of the Ice Maiden. This rare glacier is one of only three in the world that descends from alpine heights into a temperate rainforest, almost reaching sea level. New Zealand is home to two of these unique glaciers, Franz Josef and Fox Glacier, both highly accessible and popular with visitors. The best ways to experience the glacier are through scenic flights or, for the adventurous, a heli-hike. You can also enjoy glacier views with a short drive from the village and walking tracks. Beyond the glacier, Franz Josef offers a wealth of adventure activities and beautiful forest and alpine walks, making it a must-visit destination.

One Hour Private Tub with Waiho Hot Tubs

Relax and unwind in the soothing comfort of fresh, warm water and aromatic wood smoke. Enjoy your own private tubs, nestled in a lush rainforest setting on New Zealand's West Coast. These wood-fired hot tubs combine the soothing comfort of warm water with the unique atmosphere of wood smoke to give you an unforgettable experience.

Your accommodation: Legacy Te Waonui Hotel Franz Josef

Nestled amongst native West Coast rainforest at Franz Josef is a very special five-star retreat. Designed with utmost care of its precious environment, guests at Te Waonui Forest Retreat will find themselves encircled by rainforest and accommodated in natural and sustainable luxury.

Meals included: Breakfast, Dinner



Day 6



Franz Josef Glacier Adventure with Franz Josef Glacier Guides - Lunch Included

This exciting experience is for anyone seeking a private on-ice adventure. This activity includes a longer flight than most (10 minutes) as you fly over the glacier's neve area. On landing, the knowledgeable and experienced qualified NZMGA Hard Ice Guide will demonstrate their skills on the glacier. With no set tracks and a maximum of 4 guests per guide, guests will be taken through spectacular ice formations and crevasses. Guides will cater to the group's preferences, making this a truly bespoke experience. Should the opportunity present itself, guests will be able to explore different ice formations by walking through caves, and if you wish have a go at ice climbing. All equipment required for this adventure is included in the cost, plus the helicopter transfers lunch and drinks. It is important you read and understand the risks associated with this activity prior to travel. For more information, please see [here](#).

Your accommodation: Legacy Te Waonui Hotel Franz Josef

Nestled amongst native West Coast rainforest at Franz Josef is a very special five-star retreat. Designed with utmost care of its precious environment, guests at Te Waonui Forest Retreat will find themselves encircled by rainforest and accommodated in natural and sustainable luxury.

Meals included: Breakfast, Lunch, Dinner



Day 7



Franz Josef to Arthur's Pass National Park

Driving north on State Highway 6 you pass through many small West Coast towns. Hari Hari is the township that Guy Menzies decided to land in (or rather crash land) as he became the first person to fly solo across the Tasman. Ross is the site of an old gold mining town and some of the old buildings remain. You can even pan for gold. The craft and gift stores in Hokitika are excellent with a great range of locally made items and if you want to explore further here then the Hokitika Gorge is worthy of a 50 minute detour.

State Highway 73 is the main road between the West Coast and Christchurch and the scenery is spectacular, even in the rain and there is a pretty good chance of rain in the high alpine mountains. With hundreds of waterfalls cascading down the bush-clad hillsides, it's not a road to be rushed. Originally the road was a pass used by Maori as they made their seasonal passage to look for the greenstone abundant in the West Coast mountains. When the gold rush hit the West Coast in the late 1800's then a road was quickly developed and not soon after the train.

Today the main use for the track is transporting coal to Lyttelton Harbour but once a day the now world famous TransAlpine Scenic Train takes a few hundred tourists and visitors between the two oceans.

The Otira Gorge on the Western side of Arthur's Pass features a remarkable piece of engineering with the road passing high on a viaduct through this large valley. This is a recent addition to the route as the old road was washed away in a rock fall a few years ago. There are numerous lookout points giving great views of the valley and its engineering feat but watch out for the local residents, the kea. this bird is the world's only alpine parrot and can be extremely cheeky.

Arthur's Pass Township is a bustling place in the peak season with many walkers and adventurers using it as a base for the forays into the mountains of Arthur's pass National Park. The Department of Conservation centre here has an excellent display of the local history and is a great source of information for the many short walks in the area.

Arthur's Pass National Park

Arthur's Pass National Park straddles the Southern Alps and because of this, offers a landscape of contrast. The Western regions of the park benefit from the high rainfall that drops from the prevailing winds as it ascends the main divide, creating lush rainforests. The east is much drier and dominated by beech forest. Between the two lies the mountainous areas of the Southern Alps, home to kea and snow tussock. As well as the natural wonders of the park there is a long history of human presence, beginning with early Māori who used the passes to travel between the east and west coasts to trade pounamu-Greenstone. In 1864 Arthur Dobson surveyed the area to create a reliable route and despite his advice that it was 'almost impossible' a large number of men carved a rudimentary road through the Southern Alps - completing it in 1866. The recent Otira Viaduct was a major engineering achievement and greatly minimises the hazards of travelling this way. The West Coast goldfields were the driver for the creation of the road and also led to Arthur's Pass village being developed.

The village still exists and provides amenities including a store, cafes, restaurants and the Department of Conservation visitor centre. There are several ways to explore the National Park, including hiking, caving and bird-watching. Visit the DOC visitor centre, to be advised on the most suitable walks for your ability and the weather conditions.

Flockhill Luxury Stay

Step into 36,000 acres of stunning alpine landscape and discover luxury adventure vacations in New Zealand's Southern Alps. The new Flock Hill offers an inspiring blend of exploration and harmony with nature. With pristine lakes, hidden caves, sweeping tussock fields, and towering mountains, Flock Hill is one of the most breathtaking destinations for adventure seekers. Create unforgettable memories with custom-designed activities, savor exceptional dining, and feel connected each morning as you step out into the expansive surroundings.

Your accommodation: Flockhill - Villas

Adventurous spirits with a sophisticated palate are invited to indulge in the Flockhill experience. Nestled within the expansive station, Flockhill's Alpine Lodge stands as a tranquil observer of life in the breathtaking Southern Alps.

Meals included: Breakfast, Lunch, Dinner



Day 8



Flockhill Luxury Stay

Set in an exclusive wilderness where nothing is manufactured, Flockhill inspires adventure and exploration. Activities arranged by the lodge offer a unique taste of Flockhill, shared in an intimate setting with fellow guests. You might embark on a scenic journey into the station's remote backcountry, gaining an appreciation for New Zealand's legendary farming heritage. Spend time with the animals, learn the art of dog-whistling, and watch as skilled dogs muster a flock of sheep. Alternatively, you might hop on an e-bike to explore the Lake Track, visit Lake Pearson, or set out on a scenic hike.

Your accommodation: Flockhill - Villas

Adventurous spirits with a sophisticated palate are invited to indulge in the Flockhill experience. Nestled within the expansive station, Flockhill's Alpine Lodge stands as a tranquil observer of life in the breathtaking Southern Alps.

Meals included: Breakfast, Lunch, Dinner



Day 9



Arthur's Pass to Kaikoura

Travelling from the Southern Alps to the Coast, this drive offers spectacular views of braided river valleys. You'll travel through Castle Hill Scenic Reserve, dotted with remarkable rocky outcrops, popular for hiking.

Descending onto the Canterbury Plains, you'll travel through the rich farmland surrounding Christchurch before turning North through the small towns of Rangiora and Oxford. You'll then travel on State Highway 1 through the Waipara Valley. If you have plenty of time be sure to stop at Hanmer Springs for a soak in the hot mineral pools.

The road hugs the coast for the final stretch of this drive, before arriving at your destination, Kaikoura. Keep a lookout for dolphins as they are often seen swimming just off the coastline as well as New Zealand fur seals basking by the roadside.

Kaikōura

Kaikōura is a stunning coastal town known for its rich marine life and dramatic scenery. Visit the fur seal colony, take a whale-watching cruise, or swim with playful dusky dolphins. The town is rich with attractions, walking tracks, and activities for every visitor. A walk around the Kaikōura Peninsula is a must, where you can explore tide pools teeming with marine life, observe sea creatures basking on the rocks, and, for bird lovers, spot the impressive native albatross. Just be sure to keep a respectful distance from any sea lions you meet. Highlights like Ohau Point and historic Fyfe House offer insight into the region's wildlife and whaling past. Finish your visit by sampling the fresh local seafood, renowned for having some of the best fish and chips in the country, or by taking a relaxing wander through the tranquil Lavendyl Lavender Farm.

SUGGESTED ACTIVITY - Taste of the Farm with Hapuku Kitchen

Experience the magic of Kaikōura's wild landscape through a unique farm-to-table cooking class with Chef Fiona. Join her in her charming rural kitchen and learn to create uncomplicated yet delicious dishes inspired by the region's bounty. Harvest fresh ingredients from her extensive gardens and discover the secrets to transforming them into culinary masterpieces. Enjoy a welcome of locally roasted coffee, New Zealand tea, and fresh baking before venturing into the gardens. The day's menu is crafted based on the freshest harvest, ensuring peak flavour.

Your accommodation: Hapuku Lodge & Tree Houses

Hapuku Lodge was built to give guests a great night's sleep in one of the most beautiful places in the world. The Lodge sits tight between the mountains and the ocean, on a deer stud and olive farm.

Meals included: Breakfast, Dinner



Day 10



Ocean Safari Whale Watching Flight with South Pacific Helicopters

Explore Kaikōura's wildlife colonies from the air in this incredible 45-minute helicopter Ocean Safari. Fly over the Seaward Mountain Ranges and Kaikōura Peninsula before reaching the vastness of the Pacific Ocean, home to nature's most amazing marine life. Kaikōura is located on the migratory routes for Humpback Whales, Southern right whales, Orca, and even Blue whales depending on the time of year. Other mammals that may be sighted include Dusky dolphins, fur seals, and albatross. Land at an exclusive location to experience the vistas of the mountains and sea before finishing with a flight back to Kaikōura Airport.

Kaikōura to Peak View Retreat

Heading north from Kaikōura, the road hugs the shore for approximately 50 kilometres and offers many opportunities to view the native wildlife such as seabirds and New Zealand fur seals. One of the best seal watching locations is Ohau Point (25km north of Kaikōura), where you can observe the adults on the shoreline and the pups frolicking in the waterfall, just a short walk from the road (signposted). As the road turns inland, the rugged coast gives way to the orderly, lush rows of the Marlborough wine region. You'll pass through Blenheim, the heart of New Zealand's Sauvignon Blanc. Transitioning from orderly rows of vines to wild, ancient forests and finally to the soaring heights of the Whangamoa Ranges. This journey culminates in a dramatic ascent to your private mountain-top sanctuary, where the clouds meet the ocean and the silence is only broken by native birdsong.

Your accommodation: Peak View Retreat

Peak View Retreat is an adults-only luxury retreat on a mountaintop with 360-degree ocean and mountain views. Perfect for romantic getaways, it offers peace, stargazing, and native birdsong.

Meals included: Breakfast



Day 11



Heli-hike Abel Tasman with Wine, Art & Wilderness including lunch

Skip the crowds and soar over the pristine coastlines and golden beaches of the National Park via helicopter. Touch down for an immersive, exclusive guided hike led by the experts from Wine, Art & Wilderness. Combining the thrill of a scenic flight with a personalised walk among secluded wonders, this tour offers unparalleled access and unforgettable perspectives of New Zealand's coastal paradise. Lunch, snacks, and refreshments are all included for a luxurious full-day adventure.

Your accommodation: Peak View Retreat

Peak View Retreat is an adults-only luxury retreat on a mountaintop with 360-degree ocean and mountain views. Perfect for romantic getaways, it offers peace, stargazing, and native birdsong.

Meals included: Breakfast



Day 12



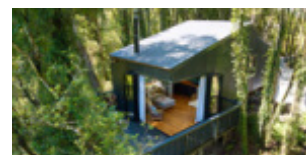
Peak View Retreat to Te Aka Treehouse

Traverse the diverse spine of the South Island, moving from the sunny Tasman region into the rugged, emerald soul of the West Coast. The road leads you through the heart of the Buller Gorge, where the mighty Kawatiri (Buller River) carves a dramatic path through granite canyons. Keep your camera ready for the Lyell Historic Reserve, a ghost town that offers a hauntingly beautiful glimpse into New Zealand's gold-mining past. As you cross the threshold into the West Coast, the air grows crisp and the forest becomes a dense, prehistoric tapestry of towering Rimu and ancient tree ferns. Your destination is Te Aka Treehouse, a hidden gem tucked away in the rainforest of Nelson Creek.

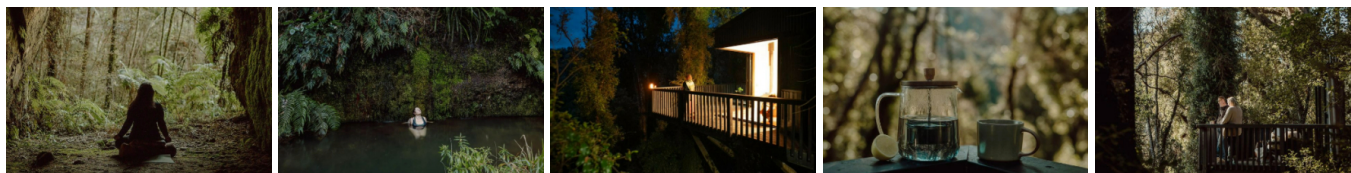
Your accommodation: Te Aka Treehouse Native Forest Retreat

Immerse yourself in the untouched beauty of the West Coast forest. With dappled light, birdsong symphonies, and breathtaking views.

Meals included: Breakfast



Day 13



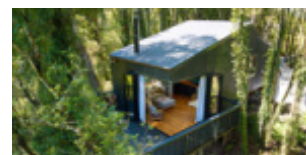
Spend the day at Te Aka Treehouse

Nestled deep within New Zealand's native forest, Te Aka offers an unparalleled escape into the heart of nature and history. Surrounded by lush greenery and alive with the melodic calls of native birds, this retreat is more than just a place to stay—it's an invitation to immerse yourself in the soul of Aotearoa. Awaken to the enchanting dawn chorus, where tūī and bellbirds serenade the morning, and fall asleep to the soothing calls of the ruru under a canopy of stars. By day, explore exclusive private walking tracks that traverse conservation land and unveil hidden relics of the region's gold-mining heritage. These pathways, carefully curated for guests, lead to historical remnants of tunnels, equipment, and forgotten engineering marvels, offering a glimpse into New Zealand's industrious past. For bird enthusiasts, Te Aka is a haven. Equipped with binoculars provided in every accommodation, guests can spot an array of native birds, including the vibrant kererū, playful fantails, and the elusive kākā. Seasonal gatherings of kākā bring lively energy to the retreat, while the evenings resonate with the haunting calls of the ruru.

Your accommodation: Te Aka Treehouse Native Forest Retreat

Immerse yourself in the untouched beauty of the West Coast forest. With dappled light, birdsong symphonies, and breathtaking views.

Meals included: Breakfast



Day 14



Te Aka Treehouse to Greymouth

Leaving Te Aka, you'll soon arrive in the charming village of Nelson Creek, known for its historic gold mining roots, you'll then travel south along State Highway 7. The route weaves through dense native bush and rolling hills, with the Grey River often visible alongside the road, adding to the region's wild, untamed charm. Consider stopping at Dunollie, a small settlement north of Greymouth, to explore its mining heritage or simply enjoy the coastal scenery. As you approach Greymouth, the rugged West Coast begins to unfold, with the Tasman Sea providing a dramatic backdrop.

Return your rental car

Return your rental vehicle to your designated depot before your next adventure.

TranzAlpine Scenic Train: Greymouth to Christchurch

Considered one of the world's great train journeys, the TranzAlpine Scenic Train takes you from Greymouth to Christchurch. Travel across the South Island from the west to the east coast through Arthur's Pass National Park. From the comfort of your carriage see lush beech forest, deep river valleys and the spectacular peaks of the Southern Alps. Descend to the windswept Canterbury Plains before arriving in the city of Christchurch.

Private Transfer Christchurch Train Station to Accommodation

On arrival at the Christchurch train station, you will be met by a private driver and transferred to your accommodation.

Christchurch

Christchurch known in Māori as Ōtautahi, is the largest metro area in the South Island. Commonly referred to as New Zealand's "Garden City", Christchurch is home to one of the biggest public parks in the country, and beautiful botanic gardens. The city was hit with devastating earthquakes in 2010 and 2011, now the city crosses the line between its English heritage and a new modern architecture. To take in some arts and culture, pay a visit to the Canterbury Museum or the Christchurch Art Gallery. Take a step back in time with a tram around the city or punt along the Avon River. If tasting your way around the city is your means of travel, try out a cultural eating tour. A short drive from the CBD will lead you to the outskirts of the Banks Peninsula beachside suburb of Sumner or through the tunnel to Lyttelton Harbour which hosts fantastic markets on Saturday mornings.

Your accommodation: The George Hotel

The George is the essence of supreme comfort. The award-winning 5 star hotel is opposite Hagley Park and just a few minutes stroll from the Botanic Gardens. It also has an award-winning restaurant, 50 Bistro onsite.

Meals included: Breakfast, Dinner



Day 15



Private Transfer Accom to Europcar Airport Depot with Christchurch Touring

A private transfer will collect you from your accommodation and transfer you to Europcar Airport Depot to pick up your rental car.

Collect Rental Car

This tour's from price includes an intermediate-sized vehicle, setting you up for comfortable travels. Yet, we understand every adventure is unique! Feel free to select the perfect wheels from our incredible collection of rental cars, spanning from economy hatchbacks to premium SUVs.

Christchurch to Aoraki-Mt Cook National Park

Drive through the heart of the South Island, crossing the vast Canterbury plains. Catch your breath in Geraldine before continuing through Fairlie. Ascending Burkes pass you'll come to the picturesque town of Lake Tekapo. Follow the road and take in the view of Aoraki-Mt Cook (New Zealand's tallest mountain) from the shores of Lake Pukaki, known for its glacier fed turquoise blue colour. Continue along the lake to your final destination Aoraki-Mt Cook Village.

Aoraki-Mt Cook National Park

At 3754m Aoraki-Mt Cook is Aotearoa-New Zealand's highest mountain, located deep in the heart of the Southern Alps. As well as its impressive beauty, Aoraki-Mt Cook National Park is also home to a huge range of awe-inspiring sights and activities. Take to the air with Mt Cook Ski Planes for a scenic flight that includes a glacier landing. At around 27 kilometres long the Tasman Glacier is New Zealand's longest and a Glacier Explorers tour allows you to see its unique features up close.

There are many short hikes in and around the park and these are well signposted around the village. Those with an interest in the night sky should take a Big Sky Stargazing tour with the Hermitage Hotel. The region is considered to have one of the clearest night skies in the world and is one of the few gold-rated dark sky reserves worldwide.

Visit the Sir Edmund Hillary Alpine Centre for insight into this region's mountain climbing history. You'll also learn of Sir Ed's incredible achievements and his dedication to helping others around the world.

Mt Cook Lakeside Retreat Dining

Dining at Mt. Cook Lakeside Retreat is a culinary journey that combines exceptional flavors with breathtaking views of the Southern Alps and Lake Pukaki. The retreat's chefs craft gourmet dishes inspired by fresh, locally sourced ingredients, celebrating the best of New Zealand's produce. Each meal is thoughtfully prepared, offering a perfect balance of creativity and authenticity. Guests can savor their dining experience in the elegant Pukaki Observatory, under a canopy of stars, or in the comfort of their private villa. Paired with a selection of fine New Zealand wines, dining at Mt. Cook Lakeside Retreat is as memorable as its stunning surroundings.

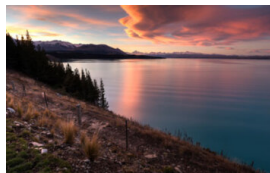
Your accommodation: Mt Cook Lakeside Retreat

Mt Cook Lakeside Retreat offers exclusive accommodation, set on the shores of Lake Pukaki overlooking Mt Cook National Park. After a day of exploring relax in your private peaceful outdoor spa pool.

Meals included: Breakfast, Dinner



Day 16



Mt Cook Lakeside Retreat

Mt. Cook Lakeside Retreat is a secluded haven of luxury set on the tranquil shores of Lake Pukaki, offering breathtaking views of Aoraki/Mt. Cook and the Southern Alps. Nestled within a pristine alpine landscape, the retreat provides an exclusive escape where privacy, elegance, and nature converge. Guests can unwind in beautifully appointed villas featuring spacious living areas, private hot tubs, and expansive windows that frame the stunning scenery. The retreat offers a range of tailored experiences, from stargazing in the Pukaki Observatory to exploring nearby hiking trails, fly fishing, and indulging in spa treatments. Its gourmet dining celebrates local flavours, with meals crafted from fresh, seasonal ingredients and paired with fine New Zealand wines. Whether for relaxation or adventure, Mt. Cook Lakeside Retreat is a place to reconnect with nature and experience the finest in alpine luxury.

Your accommodation: Mt Cook Lakeside Retreat

Mt Cook Lakeside Retreat offers exclusive accommodation, set on the shores of Lake Pukaki overlooking Mt Cook National Park. After a day of exploring relax in your private peaceful outdoor spa pool.

Meals included: Breakfast, Dinner



Day 17



Aoraki Mt Cook National Park to Dunedin

Leave Aoraki Mt Cook National Park and travel past Twizel, one of the locations for the Lord of the Rings films. Go through Omarama, the gliding capital of New Zealand. Continue down the Waitaki Valley follow the hydro power generating system to the rural town of Kurow, home to the divine Valli Wines. Stop for a sip or continue on to the east coast. Stretch your legs in Oamaru, known for its white stone buildings constructed with the local Oamaru Stone and Steampunk influence. If you were a little late off the mark this morning you may get the chance to see the blue penguins come ashore at dusk. Continue south down the coast to Moeraki, and take a detour towards the beach to see the Moeraki Boulders, a unique geological feature well worth a look. As you arrive in Dunedin, take in the city's Edwardian and Scottish heritage reflected in the buildings around the city centre The Octagon.

Dunedin

Dunedin, known in Māori as Ōtepoti, is referred to as the "Edinburgh of the Southern Hemisphere". The city has a rightly deserved reputation as one of the best-preserved Victorian and Edwardian cities in the Southern Hemisphere. Of particular note is Dunedin Railway Station, built 1904 - 1906, and St Paul's Cathedral in the Octagon. The Otago Museum is renowned for its Māori and Pacific Island collections and natural history displays. A visit to the Speights, New Zealand's oldest brewery, is also considered a must while in Dunedin. The Botanic Gardens is a great spot and at the right time of year, you can witness the Rhododendron Dell in bloom. The Otago Peninsula is the only home in the world to the Northern Royal Albatross. The Peninsula can be visited for the day from Dunedin and the stunning harbor landscape and wildlife are worth exploring. High among the rolling hills of the Peninsula is Larnach Castle, the grand home of an early politician. Construction of the castle began in 1871 and was completed 12 years later. From here, views out to sea and back towards the city emphasize the singular beauty of Dunedin and its jewel-like harbor.

Dinner at Camp Estate, Larnach Castle

Keeping with the historical setting of Larnach Castle, a four-course dinner is offered in a grand Castle Dining Room. This is a trust-the-chef experience where you may indulge in incredible meals and meet other guests. The menu reflects local meats and vegetables, served in a traditional New Zealand-style cuisine with the opportunity to pair with regional wines.

Your accommodation: Camp Estate at Larnach Castle

A luxurious country house built from blue stone and features a spectacular marble staircase. The modern rooms are all double glazed and the reception rooms are all heated by open fires and underfloor heating. Staying at Camp Estate includes entry to Larnach Castle and the grounds.

Meals included: Breakfast, Speciality Dinner



Day 18



Dinner at Camp Estate, Larnach Castle

Keeping with the historical setting of Larnach Castle, a four-course dinner is offered in a grand Castle Dining Room. This is a trust-the-chef experience where you may indulge in incredible meals and meet other guests. The menu reflects local meats and vegetables, served in a traditional New Zealand-style cuisine with the opportunity to pair with regional wines.

Penguin Tour with The Opera

Learn about the endangered Yellow Eyed Penguin when you visit The Opera - Otago Peninsula Eco Restoration Alliance, a private conservation reserve dedicated to ensuring the survival of this unique species. The project is entirely funded by guided tours which allow the conservation team to engage in habitat restoration, predator control, a research program, and an on-site rehabilitation facility.

On your tour, you will learn about the issues the Yellow Eyed Penguin faces, their life cycle, and how the project is carried out. Your experience will begin in a theatre before moving to the rehabilitation center where penguins may be seen up close. You'll take a short bus trip over to the reserve and be led on foot approx 2km by your guide through a system of covered trenches to view hides that allow access to the living and breeding habitat of this very shy bird without disturbing them. There is also an opportunity to meet other animals that reside in the reserve including fur seals, sea lions, and several species of shore and land birds.

SUGGESTED ACTIVITY - Taieri Gorge Railway Scenic Train

Experience the breathtaking Taieri Gorge on Dunedin's iconic scenic train journey! Travel through stunning Otago landscapes, marvel at the engineering feats of the historic Taieri Gorge Railway, and hear captivating stories of the region's past from our onboard commentary. See the majestic Wingatui Viaduct, the tallest wrought iron structure in Australasia, and explore hand-carved tunnels. Enjoy comfortable, all-weather travel with onboard refreshments and photo stops. Choose a return trip from Dunedin's historic Railway Station or opt for a one-way journey to Pukerangi. Escape the digital world and reconnect with nature on this unforgettable New Zealand rail experience.

Your accommodation: Camp Estate at Larnach Castle

A luxurious country house built from blue stone and features a spectacular marble staircase. The modern rooms are all double glazed and the reception rooms are all heated by open fires and underfloor heating. Staying at Camp Estate includes entry to Larnach Castle and the grounds.

Meals included: Breakfast, Speciality Dinner



Day 19



Dunedin to Te Anau

The drive to Te Anau takes you through classic Southland farmland scenery. Pass through the tranquil river town of Balclutha, the largest town in South Otago, which hosts a range of shops and services. Balclutha is memorable for its arched concrete bridge, under which flows the mighty Clutha River. The river is open for salmon and trout fishing all year round. As you head inland, you will pass through the small rural town of Clinton before reaching Gore, the official home of country music. It's also known for great fly fishing, with the Mataura River and many other productive streams close by. Take time to enjoy the lush farmland scenery as you journey east towards your lakeside destination of Te Anau, the gateway to Fiordland National Park and Piopiotahi-Milford Sound.

Te Anau

It is the gateway to Fiordland National Park and a perfect base to visit Piopiotahi-Milford Sound. The Milford Road originates here, and this is arguably one of the most scenic stretches of highway in the country. Te Anau sits on the shores of spectacular Lake Te Anau, which reaches depths of 417 meters. Te Anau Township is the starting point for many walking tracks, including two of New Zealand's Great Walks, the Milford track and the Kepler track. Apart from hiking, you could go kayaking, lake cruising, fishing, or exploring Te Anau Glowworm Caves. You could go for a bike ride alongside the lake towards Lake Manapouri, on a popular Lake to Lake biking route. Along the way, you will pass a bird sanctuary specialising in Takahe, and other native birds.

Relax at Fiordland Lodge

Perched on a ridge with commanding views of Lake Te Anau and the Murchison Mountains, Fiordland Lodge serves as a refined sanctuary within the rugged wilderness of a World Heritage area. The lodge's grand architecture, defined by soaring log ceilings and a massive stone fireplace, creates a warm, rustic atmosphere where guests can relax in the cedar hot tub or explore the property on E-bikes. Beyond the lodge, the wonders of Fiordland National Park await, offering world-class fly fishing, access to the famous Kepler and Milford Tracks, and breathtaking excursions to the iconic Milford and Doubtful Sounds. Talk to your travel specialist to book one of these incredible experiences.

Your accommodation: Fiordland Lodge

Set in a World Heritage area Fiordland Lodge offers the discerning traveller comfort and privacy. The elegance and splendour of the Lodge is mirrored in the breathtaking views of Lake Te Anau and Fiordland. Private and serene, the Lodge is perfect for relaxation, or as a base for your Fiordland experience.

Meals included: Breakfast, Dinner



Day 20



Te Anau to Milford Sound, returning to Te Anau

The magnificent Milford Road leading to Milford Sound offers some of the most beautiful and iconic scenery in the country. Countless photo opportunities mean this drive should not be rushed. From crystal clear lakes and towering mountains to lush glacier-formed meadows, this area is abundant with picture-perfect scenes. Continue on through the Homer Tunnel, an engineering marvel at 1219 meters long. Arriving in the village of Milford, you will be greeted with an amazing view of Mitre Peak. A day cruise into the heart of the sound is not to be missed. You'll learn about how this magnificent area was formed and experience the wonder of the falls that line the Fjord before back-tracking the way you came.

Milford Premium Cruise with RealNZ

Get up close and personal with Milford Sound on a leisurely cruise of this spectacular fiord aboard the M.V Sinbad, an exclusive vessel for a premium experience. From thundering waterfalls to sky-high mountains to lush rainforests, Milford has it all. Experience the spray of a waterfall as you cruise close to sheer rock faces. With a glass of bubbles on arrival and canapes provided throughout the journey, this is the perfect way to explore Milford Sound. At a capped capacity of 45 people and a roaming nature guide providing informative commentary throughout the extended cruise, this experience allows guests to enjoy the Fiord at a relaxing pace. It is important you read and understand the risks associated with this activity. For more information, see [here](#).

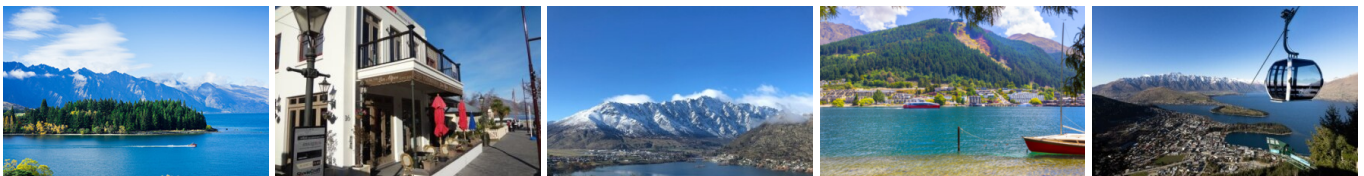
Your accommodation: Fiordland Lodge

Set in a World Heritage area Fiordland Lodge offers the discerning traveller comfort and privacy. The elegance and splendour of the Lodge is mirrored in the breathtaking views of Lake Te Anau and Fiordland. Private and serene, the Lodge is perfect for relaxation, or as a base for your Fiordland experience.

Meals included: Breakfast, Lunch, Dinner



Day 21



Te Anau to Queenstown

Journey across expansive tussock lands en route to Queenstown. Pass through Mossburn, renowned as the deer capital of New Zealand, and continue through the picturesque Southland countryside. As the road begins to trace the edge of Lake Wakatipu, marvel at the breathtaking views from the Devil's Staircase. Finally, approach Queenstown, the adventure capital of New Zealand, with the Remarkables mountain range standing majestically in the backdrop.

Queenstown

Queenstown known in Māori as Tāhuna, is home to many adrenaline-inducing activities. Nestled on the shores of Lake Wakatipu, this alpine town has very distinct seasons, and most adrenaline-filled activities can be accessed year-round. Queenstown is home to jet boating, bungy jumping, rafting, skydiving, paragliding, and even indoor thrills. If you want that rush - head out on the Shotover Jet, dive off the Nevis Bungy, freefall on the Canyon Swing, or Zip line the Gondola. While arguably the brightest gem in New Zealand's crown, Queenstown offers far more than an action-packed getaway. If you're looking for a slightly slower pace, there are plenty of recreational activities, including hiking and biking trails to explore, guided tours, boat cruises, scenic flights, or spa and wellness options to help you get away. Head to the lakefront, eat at one of the al fresco eateries, and soak up the local vibes; catch a ride on the iconic 100-year-old steamship the TSS Earnslaw; or take the Skyline Gondola and enjoy bird's-eye views of the Remarkables mountain ranges and Lake Wakatipu. Pack a picnic and go for a hike, only 20 minutes from Central Queenstown, Coronet Peak opens for summer sightseeing. You can ride the Peak Gondola to the top for panoramic views and hike the trails, or go for a bike ride on many excellent biking trails. In winter, Queenstown becomes a world-class winter resort, with four ski areas and a range of activities, bars, restaurants, and ways to relax and unwind.

The Original Onsen Evening Session

Enjoy the most memorable experience in Queenstown and surround yourself with a sky of stars and 14 Japanese lanterns as you soak up the warm waters of the Onsen Hot Pools. Nestled high into a cliff-side overlooking the magnificent Shotover River canyon, the experience is all about unwinding and soaking-up Queenstown's spectacular scenery, enjoying the pure waters and the fresh mountain air as your mind and body surrenders to the deep penetrating warmth and gentle massage of the private pools. Water temperature is set according to the day - generally between 37.8C on a hot day, to 39.8C during a snow-storm and in the summer one of the pools is kept cold for those who relish the thought of a cold plunge!

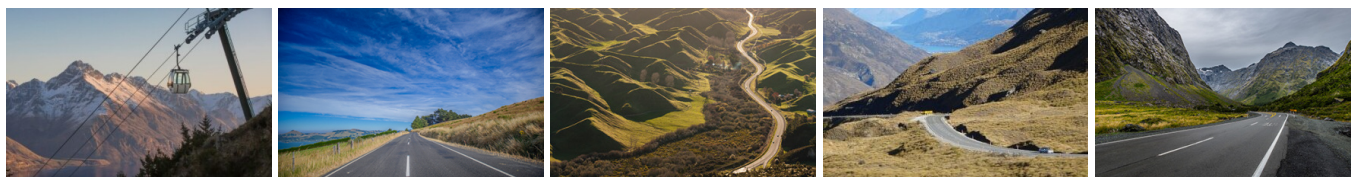
Your accommodation: Queenstown Park Boutique Hotel

Queenstown Park Hotel is a boutique hotel with a modern romantic style in the heart of New Zealand's adventure capital. Set in peaceful parkland, savour views of Queenstown's majestic mountains. Enjoy easy access to the vibrant town centre where shopping, cafes and nightlife nestled on the shores of spectacular Lake Wakatipu.

Meals included: Breakfast, Dinner



Day 22



Depart Queenstown today

Drop your rental car at the Queenstown airport today.

Return your rental car

Return your rental vehicle to your designated depot before your next adventure.

Farewell from Aotearoa / New Zealand

Bid farewell to Aotearoa / New Zealand, taking with you unforgettable memories of its breathtaking landscapes and incredible adventures. In Māori, it is said mā te wā, which is not goodbye, it is see you soon!

Tour details

Departures:	Daily
Tour type:	Self Drive Tour (FTNZ ONLY)
Starts:	Queenstown
Finishes:	Queenstown
Tour length:	22
Accommodation:	Luxury Lodges
Car/transport type:	

Accommodation summary

Day 1	ROKI Collection Queenstown
Day 2	ROKI Collection Queenstown
Day 3	Minaret Station Lodge
Day 4	Minaret Station Lodge
Day 5	Legacy Te Waonui Hotel Franz Josef
Day 6	Legacy Te Waonui Hotel Franz Josef
Day 7	Flockhill - Villas
Day 8	Flockhill - Villas
Day 9	Hapuku Lodge & Tree Houses
Day 10	Peak View Retreat
Day 11	Peak View Retreat
Day 12	Te Aka Treehouse Native Forest Retreat
Day 13	Te Aka Treehouse Native Forest Retreat
Day 14	The George Hotel
Day 15	Mt Cook Lakeside Retreat
Day 16	Mt Cook Lakeside Retreat
Day 17	Camp Estate at Larnach Castle
Day 18	Camp Estate at Larnach Castle
Day 19	Fiordland Lodge
Day 20	Fiordland Lodge
Day 21	Queenstown Park Boutique Hotel