

South Island Wilderness Encounter

Begin your South Island escape in Christchurch, the garden city. Experience the iconic TranzAlpine Train to Greymouth, marvelling at panoramic views of majestic mountains and verdant landscapes. Adventure through Paparoa National Park with an exhilarating black-water rafting and glowworm cave experience. Travel to Franz Josef and unwind in a secluded rainforest retreat, soaking in your own private hot tub. Continue to Wanaka, where you'll cruise across Lake Wanaka to a hidden island. Next, arrive in Queenstown, New Zealand's luxury adventure capital. Explore the famed Routeburn Track on a guided scenic walk. Delight in premium wine tastings at renowned Gibbston Valley wineries, then board the historic TSS Earnslaw Steamship to Walter Peak for a gourmet dining experience. Journey to Fiordland, home to some of the planet's most untouched beauty. Take a breathtaking flight over Dusky and Doubtful Sounds, followed by a jet boat ride across Lake Manapouri and a walk through ancient forests. In Milford Sound, stay overnight aboard the Milford Mariner, waking to serene views of this iconic fjord. Conclude your bespoke South Island journey back in Queenstown, reflecting on your unforgettable luxury adventure through New Zealand's most spectacular landscapes.

Starts in: Christchurch
 Finishes in: Queenstown
 Length: 14days / 13nights
 Accommodation: Boutique Lodges & Hotels
 Can be customised: Yes

This itinerary can be customised to suit you perfectly. We can add more days, remove days, change accommodations, mix it up, add activities to suit your interests or simply design and create something from scratch. Call us today to get your custom New Zealand itinerary underway.



Inclusions:

Includes: Late model rental cars

Includes: Unlimited kms

Included activity: The Visitor Promise - Cultural Learning Course

Included activity: Electronic Travel Guide and In-Country Support App

Included activity: Dusky & Doubtful Sound Gold Star with Fiordland Helicopters

Included activity: Milford Mariner Overnight Cruise

Included activity: TranzAlpine Scenic Train: Christchurch to Greymouth Scenic Plus with Great Journeys NZ

plus much more...

Includes: Fully inclusive rental car insurance (excess may apply)

Includes: Afterhours emergency support while touring

Included activity: Private Transfer Christchurch International Airport to Christchurch Accommodation

Included activity: Ata Whenua - Shadowland Film at Fiordland Cinema

Included activity: Pure Wilderness Jet Boat with Fiordland Jet

Included activity: Private transfer accommodation to Christchurch Train Station with Christchurch Touring

Included activity: Underworld Rafting and Glowworm Experience with Underworld Adventures



Day 1



Private Transfer Christchurch International Airport to Christchurch Accommodation

On arrival, you will be met by a private driver and transferred to your Christchurch accommodation.

Welcome to Christchurch City

New Zealand's garden city is steadily being transformed into a vibrant urban destination. Encompassing a large green belt, it is known for its wide tree lined avenues and lush gardens. A great way to explore the city or easy way to see the sights or ride the historic trams across town to the renowned botanic gardens and the unique cardboard Transitional Cathedral, that's right it is built of cardboard!

SUGGESTED ACTIVITY - Dinner onboard the Christchurch Restaurant Tram

A truly unique dining experience in the heart of Christchurch. You'll board New Zealand's only dining tram for an unforgettable moving four-course restaurant experience. Enjoy a curated fine dining-style menu while taking in the city sights on your journey through the streets of central Christchurch. This experience includes a meal with multiple courses as the tramway route passes New Regent Street, the Avon River, High Street, and Victoria Square.

Your accommodation: The George Hotel

The George is the essence of supreme comfort. The award-winning 5 star hotel is opposite Hagley Park and just a few minutes stroll from the Botanic Gardens. It also has an award-winning restaurant, 50 Bistro onsite.



Day 2



Private transfer accommodation to Christchurch Train Station with Christchurch Touring

A private driver will collect you from your accommodation and transfer you to the Christchurch train station in time for your train journey.

TranzAlpine Scenic Train: Christchurch to Greymouth Scenic Plus with Great Journeys NZ

Great Journeys New Zealand's Scenic Plus carriage provides comfort and vast panoramic views, making our TranzAlpine scenic train journey the perfect way to explore coast-to-coast through the 'Great Divide' and the indomitable spine of mountains that partitions New Zealand's South Island. Scenic Plus offers an all-inclusive experience on the unique TranzAlpine scenic rail journey to invigorate all the senses! Feast your eyes on epic scenery while you savour regionally inspired cuisine paired with sumptuous wine and beer all from the comfort of your luxurious seat – a hosted dining experience like no other. Quite simply, we have done everything we can to ensure you feel at peace as you sink back in your seat and soak up the scenery.

Collect Rental Car

This tour's from price includes an intermediate-sized vehicle, setting you up for comfortable travels. Yet, we understand every adventure is unique! Feel free to select the perfect wheels from our incredible collection of rental cars, spanning from economy hatchbacks to premium SUVs.

Greymouth to Punakaiki

The short drive north to Punakaiki takes you along the wonderful west coast with ample opportunity to view the surf and the steep bush-clad mountains. Punakaiki is most famous for the Pancake Rocks and Blowholes. Visitors are often less aware of the many other great experiences available. Located in the heart of the Paparoa National Park, the area offers guided beach, forest, and mountain walks, canoeing, wildlife, horse trekking, surfing, gemstone hunting, caving, and climbing, heritage sites. There are taverns, cafes, and restaurants, and a great range of accommodation. The area also boasts a vibrant arts and crafts community and a cooperative gallery.

Punakaiki

Nestled on the rugged and raw West Coast, Punakaiki is a place where nature puts on a dramatic show. This small coastal town is the gateway to Paparoa National Park and is home to one of New Zealand's most famous natural wonders: the Pancake Rocks and Blowholes. Carved by the power of the Tasman Sea over millions of years, the Pancake Rocks are a geological marvel. Layer upon layer of compressed limestone and sandstone have created a bizarre stack of rock formations that truly resemble giant stacks of pancakes. At high tide, a spectacular sight awaits as the sea surges into caverns beneath the rocks, erupting through vertical blowholes in a thunderous spray. Beyond the main attraction, Punakaiki offers a deep connection to the wild West Coast environment. You can explore the lush native rainforest and coastal flora on short walks like the Truman Track, which leads to a stunning coastal arch and a secluded beach. The area is also known for its local art and craft galleries, providing a great opportunity to find a special souvenir.

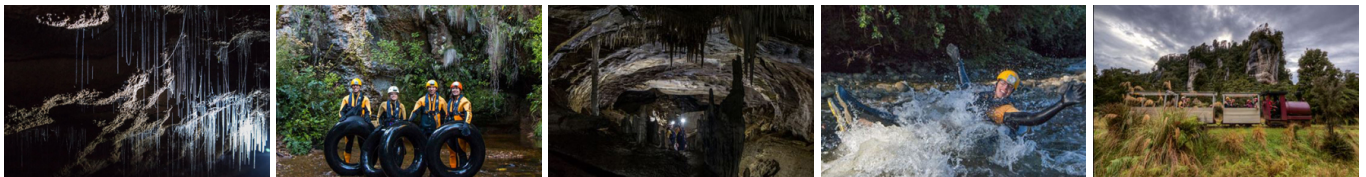
Your accommodation: Scenic Hotel Punakaiki

Scenic Hotel Punakaiki is a modern, award-winning hotel complex, architecturally designed to harmonious with the local environment. Nestled in the foothills of Paparoa National Park the resort has spectacular views of the Wild West Coast beaches while all rooms have rainforest and/or ocean views.

Meals included: Breakfast



Day 3



Underworld Rafting and Glowworm Experience with Underworld Adventures

A superb four hour Black Water Rafting adventure in the Paparoa National Park. You meander through a paradise of stalactites and stalagmites in the upper dry levels of the cave. You then enter a slow moving underground river on which you float in your tube using only the natural light of an awe inspiring display of glow worms for navigation. Emerge from the cave into a remote and untouched world before leaving its tranquility for the rushing bubbling waters of the low grade Nile River Rapids. It is important you understand the risks associated with this activity. For more information please see [here](#).

Paparoa National Park

Paparoa National Park on the South Island's West Coast is most famous for its sculpted limestone cliffs, including the Pancake Rocks and blowholes at Dolomite Point. The best place to base yourself for exploring the park is the small village of Punakaiki.

The limestone base of the park makes this a spectacular destination, with karst limestone formations scattered amongst lush green forests and carved out river canyons. There are a number of opportunities for the unguided day tripper to safely experience the subterranean cave systems. The oldest tourist destination in the park is the Fox River Cave Walk, a safe cave walk with 200m of an underground network to explore, or visit the Punakaiki cavern located right beside State Highway 6 – just remember to bring a good flashlight.

To really understand the flora and fauna of the park, make sure to stop and visit the caves and rivers, or for a more adventurous experience, black water rafting with Underworld Adventures. For more information on walks and caves in Paparoa National Park, visit the Department of Conservation website.

Pancake Rocks

The Pancake Rocks are a very popular tourist destination at Dolomite Point, south of the main village. The Pancake Rocks are a heavily eroded limestone area where the sea bursts through several vertical blowholes during high tides. Together with the 'pancake'-layering of the limestone (created by immense pressure on alternating hard and soft layers of marine creatures and plant sediments), these form the main attraction of the area.

The Pancake Rocks are presently explorable by several walkways winding through the rock formations, some are pathways, and others are carved into stairways up and down the rock faces. State Highway 6, the only through road on the West Coast, passes through the town.

Your accommodation: Scenic Hotel Punakaiki

Scenic Hotel Punakaiki is a modern, award-winning hotel complex, architecturally designed to harmonious with the local environment. Nestled in the foothills of Paparoa National Park the resort has spectacular views of the Wild West Coast beaches while all rooms have rainforest and/or ocean views.

Meals included: Breakfast



Day 4



Punakaiki to Franz Josef Glacier

The drive South on State Highway 6 takes you through many West Coast towns. The first is Greymouth, the commercial centre for the West Coast. Just south of the town is Shantytown a replica gold rush town with lots of great displays from yesteryear.

The next town is Hokitika and this is a great place to explore the craft and gift stores. The Jade or Greenstone on offer in Hokitika is probably some of the best you will see in the country. The Hokitika Gorge, off the beaten track and inland a little is a spectacular 50 minute detour. Turquoise waters flowing through a narrow gorge. A great short walk will deliver you to this piece of paradise.

Ross is the site of an old gold mining town and some of the old buildings and workings remain. In fact Ross is still home to one of the few working gold mines left in New Zealand and the local information centre offers you the chance to pan for gold.

Continuing south Hari Hari is the township that Guy Menzies decided to land in (or rather crash land) as he became the first person to fly solo across the Tasman.

Whataroa, a small township on the main road is where you would head off to see one of the worlds rarest birds. The entire population (somewhere between 150 and 200 birds) of the New Zealand white heron or kotuku nest at the Waitangi Roto Nature Reserve and guided tours from October to March will take you there.

Arriving in to the Glacier region you catch your first glimpse of Franz Josef Glacier from a few kilometres out as it flows from the Southern Alps. Franz Josef township is a lively place with a great atmosphere, plenty of choice to dine out and some wonderful activities to enjoy.

Okarito Lagoon Guided Kayak Trip (2 hours) with Okarito Kayaks

Kayaking is by far the best way to enjoy the flora, fauna, and scenic grandeur of New Zealand's largest unmodified coastal wetland. Previous experience is not necessary. Okarito Lagoon covers more than 3240 hectares of shallow open water and is well known for its outstanding bird life, including white heron and royal spoonbill. Exploring the open water and river channels that lead you deep into the heart of the rainforest is like stepping back in time to pre-European conditions and on a clear day you enjoy fantastic views of Mt. Cook and the Southern Alps. Your guide will take you to their favourite spots where you'll discover the flora, fauna, and history of the lagoon.

Franz Josef

Franz Josef, named after both the local village and the nearby glacier, holds special significance in Māori culture as "Ko Roimata o Hine Hukatere" – The Tears of the Ice Maiden. This rare glacier is one of only three in the world that descends from alpine heights into a temperate rainforest, almost reaching sea level. New Zealand is home to two of these unique glaciers, Franz Josef and Fox Glacier, both highly accessible and popular with visitors. The best ways to experience the glacier are through scenic flights or, for the adventurous, a heli-hike. You can also enjoy glacier views with a short drive from the village and walking tracks. Beyond the glacier, Franz Josef offers a wealth of adventure activities and beautiful forest and alpine walks, making it a must-visit destination.

Your accommodation: Westwood Lodge

Westwood is a purpose built lodge, crafted entirely from wood and exquisitely decorated throughout. The lounge is the place to meet to watch the Southern Alps turn a soft pink in the setting sun.

Meals included: Breakfast, Dinner



Day 5



Franz Josef Glacier Helihiike with Franz Josef Glacier Guides

After a thrilling scenic flight, high above the rugged terrain, you will land on the glacier, ready to undertake a guided glacier hike. Your friendly guide will lead you through some of the most pristine and awe-inspiring glacial scenery in the world. Your guide will choose your route carefully as you go and, with an eye for the most spectacular ice formations, you'll soon be making your way through an extraordinary landscape of towering peaks and glistening blue ice. It is important you read and understand the risks associated with this activity prior to travel. For more information please see [here](#).

One Hour Private Tub with Waiho Hot Tubs

Relax and unwind in the soothing comfort of fresh, warm water and aromatic wood smoke. Enjoy your own private tubs, nestled in a lush rainforest setting on New Zealand's West Coast. These wood-fired hot tubs combine the soothing comfort of warm water with the unique atmosphere of wood smoke to give you an unforgettable experience.

Your accommodation: Westwood Lodge

Westwood is a purpose built lodge, crafted entirely from wood and exquisitely decorated throughout. The lounge is the place to meet to watch the Southern Alps turn a soft pink in the setting sun.

Meals included: Breakfast, Dinner



Day 6



Franz Josef to Wanaka

Heading south you will climb over the Fox hills before arriving at the small town of Fox Glacier. If it's a nice day enjoy spectacular reflections of snowcapped mountains in Lake Matheson, located just 5 minutes west of Fox. Heading south from fox enjoy the amazing scenery of the Southern Alps, and sneak peeks of the rugged beaches while winding through ancient temperate rainforests. At Knights Point Lookout, elephant seals can often be seen basking on the sandy beaches at the far end of the point. Crossing the Haast River you'll turn inland and through the mountainous valley littered with waterfalls. A great suggested stop along this route is the Blue Pools. Continue on past lakes Hawea and Wanaka into the alpine township of Wanaka.

Wānaka

Nestled on the shores of one of New Zealand's largest lakes and framed by the stunning Southern Alps. Wānaka is an alpine village that perfectly blends adventure, breathtaking scenery, and a laid-back vibe. In winter, Wānaka transforms into a bustling hub as snow sports enthusiasts flock to its renowned ski fields, Treble Cone and Cardrona, as well as cross-country at Snow Farm. As the gateway to Mt Aspiring National Park, it offers endless opportunities for hikers, with trails winding through remote wilderness, majestic peaks, and serene river valleys. Closer to town, you'll find a network of scenic walking tracks, such as the popular Mount Iron Track, and from the lakefront, it is a short walk to "That Wanaka Tree". For thrill-seekers, Wānaka is an adrenaline playground, offering skydiving, paragliding, downhill biking, rock climbing, and jet boating.

Your accommodation: Lime Tree Lodge

Set on a ten acre estate just outside Lake Wanaka, Lime Tree Lodge offers luxury boutique accommodation with stunning 360-degree uninterrupted mountain views.

Meals included: Breakfast



Day 7



Lake Cruise and Island Nature Walk with Eco Wanaka

Lying close to the centre of Lake Wanaka is Mou Waho Island Nature Reserve. A unique glacial remnant of the last ice age, the island is also the historic site of early shipbuilding and used to be a stopping place for the steamers and log rafts that once plied the lake. Accessible from Wanaka by a 35-minute boat cruise, the landing is on the eastern side of the island where the remnants of the early settlement remain; a stone wharf and a hut. A well-formed track leads from the landing and climbs steadily through native bush to near the top of Tyrwhitt Peak. Just before the top, we see Arethusa Pool, a small lake on the island with small islands in it - very intriguing! From the top, we have a sweeping 360-degree view of Lake Wanaka, its surrounding mountains and valleys, and below Arethusa Pool. The perfect spot to stop for tea or coffee. Going back down the track gives us more time to take in our surroundings, listening to and watching the lively bird-life, and just enjoying this unique wildlife reserve. You will feel well rewarded as you re-join the boat for the cruise back to Wanaka. Total cruise time is 1.5 hours. The trip runs subject to weather and lake conditions. Depending on the planting season, you can help The Reforestation of Mou Waho by planting a tree.

Wanaka to Queenstown

Leaving Wanaka, you head over New Zealand's highest sealed road, Crown Range Road, before dropping into Queenstown. This drive only takes about an hour, but you should allow more time to enjoy the magnificent scenery and explore the walks and many stops en route, including the Cardrona Distillery, wonderful views from Crown Range's highest point over Queenstown, the picturesque town of Arrowtown, and if time allows, even the wineries in Gibbston.

Queenstown

Queenstown known in Māori as Tāhuna, is home to many adrenaline-inducing activities. Nestled on the shores of Lake Wakatipu, this alpine town has very distinct seasons, and most adrenaline-filled activities can be accessed year-round. Queenstown is home to jet boating, bungy jumping, rafting, skydiving, paragliding, and even indoor thrills. If you want that rush - head out on the Shotover Jet, dive off the Nevis Bungy, freefall on the Canyon Swing, or Zip line the Gondola. While arguably the brightest gem in New Zealand's crown, Queenstown offers far more than an action-packed getaway. If you're looking for a slightly slower pace, there are plenty of recreational activities, including hiking and biking trails to explore, guided tours, boat cruises, scenic flights, or spa and wellness options to help you get away. Head to the lakefront, eat at one of the al fresco eateries, and soak up the local vibes; catch a ride on the iconic 100-year-old steamship the TSS Earnslaw; or take the Skyline Gondola and enjoy bird's-eye views of the Remarkables mountain ranges and Lake Wakatipu. Pack a picnic and go for a hike, only 20 minutes from Central Queenstown, Coronet Peak opens for summer sightseeing. You can ride the Peak Gondola to the top for panoramic views and hike the trails, or go for a bike ride on many excellent biking trails. In winter, Queenstown becomes a world-class winter resort, with four ski areas and a range of activities, bars, restaurants, and ways to relax and unwind.

Your accommodation: Queenstown Park Boutique Hotel

Queenstown Park Hotel is a boutique hotel with a modern romantic style in the heart of New Zealand's adventure capital. Set in peaceful parkland, savour views of Queenstown's majestic mountains. Enjoy easy access to the vibrant town centre where shopping, cafes and nightlife nestled on the shores of spectacular Lake Wakatipu.

Meals included: Breakfast



Day 8



Full Day Routeburn Guided Walk with Nomad Safaris

The Routeburn track is rated one of the world's 'Top 10 Classic Hikes', combining the thrill of personal achievement with awe-inspiring natural landscapes and unique wildlife. Your day begins as you are picked up from your accommodation and set off on the picturesque Queenstown-Glenorchy road alongside Lake Wakatipu. Passing Glenorchy you will drive through the aptly named Paradise before entering the Mt Aspiring National Park, which hosts the beginning of the Routeburn track. The smooth, flat path will take you through spectacular beech forest where you may spot the Mohua (yellowhead) and Rifleman birds flitting through the trees. The track follows the Routeburn River to the west as it roars through a breathtaking gorge. You will climb a gradual ascent on your walk through the 130-million-year-old forest towards snow-capped peaks, as your guides share their knowledge of the historical significance of the track and its local flora and fauna.

It is important you read and understand the risks associated with this activity. For more information see [here](#).

Your accommodation: Queenstown Park Boutique Hotel

Queenstown Park Hotel is a boutique hotel with a modern romantic style in the heart of New Zealand's adventure capital. Set in peaceful parkland, savour views of Queenstown's majestic mountains. Enjoy easy access to the vibrant town centre where shopping, cafes and nightlife nestled on the shores of spectacular Lake Wakatipu.

Meals included: Breakfast



Day 9



Half Day Gibbston Wine Tour with Black NZ

Settle into the leather seats of a luxury vehicle for a private afternoon tailored entirely to your palate. Guided by a local wine professional, you'll wind through the dramatic Kawarau Gorge to the Gibbston Valley, home to some of the world's most celebrated cool-climate pinot noir.

This is no ordinary tasting; you'll enjoy exclusive access to three or four boutique cellar doors, often meeting the personalities behind the labels. Whether you're swirling a vintage in a subterranean wine cave or pausing for a gourmet platter overlooking the vines, the pace is entirely yours.

SUGGESTED ACTIVITY - Shotover Jet Canyon Jet Boat Ride

Shotover Jet is the only company permitted to operate in the Shotover River Canyons. It's a thrilling ride! Skim past rocky outcrops at close range in your Shotover Jet 'Big Red', as you twist and turn through the narrow canyons at breathtaking speeds. And a major highlight - hold tight for the world-famous Shotover Jet full 360-degree spins! It is important you read and understand the risks associated with this activity. For more information please see [here](#).

TSS Earnslaw Cruise and Walter Peak Gourmet BBQ Dinner

Enjoy a quintessential Kiwi experience, a delicious gourmet BBQ buffet meal, and a farm demonstration in a stunning lakeside setting. Take in the stunning views of Lake Wakatipu and its surroundings as you cruise across the lake to the historic Walter Peak high country farm aboard the TSS Earnslaw Steamship. Enjoy the ambiance of the heart of the stately homestead while your Colonel's Homestead Restaurant chef prepares a gourmet BBQ dinner. Your seasonal menu includes an extensive selection of local New Zealand produce, including succulent meats and a selection of delicious vegetables and salads. Complete your meal with your choice of delicious desserts, or New Zealand cheeses. After dinner, watch the farm dogs in action with a sheep-herding demonstration and say hello to the other farm animals. Finally, cruise home under the southern stars and enjoy the fresh night air as the lights of Queenstown draw ever closer.

Your accommodation: Queenstown Park Boutique Hotel

Queenstown Park Hotel is a boutique hotel with a modern romantic style in the heart of New Zealand's adventure capital. Set in peaceful parkland, savour views of Queenstown's majestic mountains. Enjoy easy access to the vibrant town centre where shopping, cafes and nightlife nestled on the shores of spectacular Lake Wakatipu.

Meals included: Breakfast, Speciality Dinner



Day 10



Queenstown to Te Anau

Passing through the bustling suburb of Frankton, follow the shores of Lake Wakatipu. The Remarkables mountain range towers over you on the stretch of road known as "The Devil's Staircase" leading you to the township of Kingston. You'll venture into Southland before crossing the rolling tussock lands of Mossburn (deer capital of New Zealand) and shortly arriving at Te Anau, the gateway to Fiordland National Park.

Te Anau

It is the gateway to Fiordland National Park and a perfect base to visit Piopiotahi-Milford Sound. The Milford Road originates here, and this is arguably one of the most scenic stretches of highway in the country. Te Anau sits on the shores of spectacular Lake Te Anau, which reaches depths of 417 meters. Te Anau Township is the starting point for many walking tracks, including two of New Zealand's Great Walks, the Milford track and the Kepler track. Apart from hiking, you could go kayaking, lake cruising, fishing, or exploring Te Anau Glowworm Caves. You could go for a bike ride alongside the lake towards Lake Manapouri, on a popular Lake to Lake biking route. Along the way, you will pass a bird sanctuary specialising in Takahe, and other native birds.

Ata Whenua - Shadowland Film at Fiordland Cinema

Ata Whenua refers to the southwestern coast of New Zealand and translates to English as "Shadow Land". This breathtaking short film will take you on an unforgettable journey through one of the most awe-inspiring landscapes on earth, Fiordland National Park. Shot by award-winning cinematographers with outstanding musical composition, this is the next best thing to a scenic flight over this spectacular wilderness.

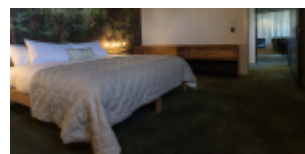
SUGGESTED ACTIVITY - Te Anau Glowworm Caves with RealNZ

Begin your Te Anau Glowworm experience with a scenic cruise across Lake Te Anau on board the luxury catamaran, Luminosa, to the western side of the lake. On arrival, you'll enter the caves through Cavern House, where informative displays detail the history of this 12,000 year old underground network. You'll then explore by limestone pathway while your guide points out hidden whirlpools, sculpted rock formations, and a rushing underground waterfall. See a magical display of thousands of glowworms as you glide through the darkness in a small boat.

Your accommodation: The Cinema Suites

The Cinema Suites in Te Anau offers luxurious, themed accommodation that combines the charm of a classic cinema with modern comfort. Each suite is thoughtfully designed with cinematic decor, featuring plush furnishings, state-of-the-art amenities, and stunning views of the surrounding landscapes.

Meals included: Breakfast



Day 11



Dusky & Doubtful Sound Gold Star with Fiordland Helicopters

Visit the southern part of the South Island's wild West Coast and experience the many scattered islands and early history unique to one of New Zealand's largest fiord, Dusky Sound. Soak up the feeling of such a remote and untouched location that can only be accessed by helicopter/plane or by boat. Your return journey will take you into Doubtful Sound, through the hidden valley of Campbell's Kingdom, and back down the South Arm of Lake Te Anau.

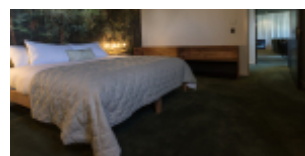
Pure Wilderness Jet Boat with Fiordland Jet

Jet boat down the Waiau river, across Lake Manapouri, to the ancient forest of the Fiordland National Park. Enjoy the thrill of jet boating down the majestic trout-filled Waiau River, to the serene Lake Manapouri. Step foot into the Fiordland National Park and go for a short walk while learning about the ancient beech forest and ferns. Your jet boat ride includes a number of stops at the exact locations of the filming the "Fellowship of the Ring" on the Waiau or "Anduin River". The driver will tell you the inside story of the filming the Lord of the Rings on this river. The trip will also include some thrilling 360 degree turns and spins as well as interesting interpretation about the flora and fauna and the local European and Māori history.

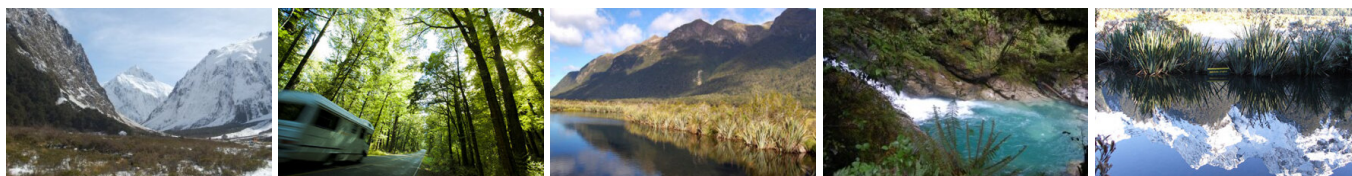
Your accommodation: The Cinema Suites

The Cinema Suites in Te Anau offers luxurious, themed accommodation that combines the charm of a classic cinema with modern comfort. Each suite is thoughtfully designed with cinematic decor, featuring plush furnishings, state-of-the-art amenities, and stunning views of the surrounding landscapes.

Meals included: Lunch



Day 12



Te Anau to Milford Sound

The road to Milford Sound has countless photo opportunities and short walks. The Mirror Lakes create perfectly clear reflections of the surrounding mountains and glacier-formed meadows. Further along, you'll pass through the Homer Tunnel, an incredible feat of engineering at 1219 metres long. Milford Sound is the only sound accessible by road, making it very popular to visit. Coming into the village, you'll be greeted with an amazing view of Mitre Peak, which rises spectacularly from the waters up to the sky. Real Journey cruises can take you out into the sound where you'll receive a wealth of information on how this magnificent area has been formed and experience first-hand the multitude of waterfalls that line the fjord.

Note: Please make sure to allow 2.5hrs to Milford Sound, this takes into account the current road works on the Milford Road."

Milford Mariner Overnight Cruise

The Milford Mariner offers you a very special dinner, bed and breakfast experience on Milford Sound. Onboard the Milford Mariner you will cruise the full length of this spectacular fiord to the Tasman Sea before anchoring for the night in sheltered Harrison Cove. Accompanied by a nature guide you can go exploring in the tender craft and kayaks or simply relax on deck. After the day's activities, you enjoy a delicious evening buffet in the spacious saloon before retiring to your private cabin.

The vessel itself was designed along the lines of a traditional New Zealand coastal trading scow to reflect Fiordland's heritage. Departing from the Milford Wharf, the Milford Mariner cruises the length of Milford Sound to the Tasman Sea leisurely exploring on the way many points of interest, there is plenty of time to view the waterfalls, rainforest, mountains and wildlife and the experienced nature guide on board will be able to answer any questions you may have. After reaching the open sea, subject to weather and favourable conditions the sails are hoisted for a period. The vessel returns to the calm and shelter of Harrison Cove for your overnight stay. It is important you read and understand the risks associated with this activity. For more information, see [here](#).

Your accommodation: Overnight Boat in Milford Sound

Onboard the Milford Mariner you will cruise the full length of this spectacular fiord to the Tasman Sea before anchoring for the night in sheltered Harrison Cove. After the day's activities, you'll enjoy a delicious evening buffet in the spacious saloon before retiring to your private cabin.

Meals included: Dinner



Day 13



Milford Sound to Queenstown

Enjoy the wonderful drive along the Milford Road as you head back towards Te Anau. Crossing the rolling tussock lands you pass through Mossburn, the deer capital of New Zealand. Following the lake north the Remarkable mountain range towers over you as you approach the adventure capital of Queenstown.

Note: Please make sure to allow 5.5hrs to Queenstown, this takes into account the current road works on the Milford Road.

SUGGESTED ACTIVITY - Gondola, Buffet Dinner, and 3 Luge Rides with Skyline Queenstown

With breathtaking views across Queenstown and Lake Wakatipu, the Skyline Complex is a must-do. Catch the fully enclosed gondola to the summit for a remarkable panorama of the city surrounds. Wander the outdoor viewing decks then enjoy a gourmet buffet meal in the Stratosphere Restaurant. For an exhilarating ride before your dinner take the luge back down the mountain. The 800 metre luge track winds through the trees finishing at the main complex where you'll be dining.

Your accommodation: Queenstown Park Boutique Hotel

Queenstown Park Hotel is a boutique hotel with a modern romantic style in the heart of New Zealand's adventure capital. Set in peaceful parkland, savour views of Queenstown's majestic mountains. Enjoy easy access to the vibrant town centre where shopping, cafes and nightlife nestled on the shores of spectacular Lake Wakatipu.

Meals included: Breakfast



Day 14



Return your vehicle to Queenstown Airport

Explore more of Queenstown before dropping your rental car at the airport depot and continuing your onward journey.

Farewell from Aotearoa / New Zealand

Bid farewell to Aotearoa / New Zealand, taking with you unforgettable memories of its breathtaking landscapes and incredible adventures. In Māori, it is said mā te wā, which is not goodbye, it is see you soon!

Tour details

Departures:	Daily
Tour type:	Self Drive Tour (FTNZ ONLY)
Starts:	Christchurch
Finishes:	Queenstown
Tour length:	14
Accommodation:	Boutique Lodges & Hotels
Car/transport type:	

Accommodation summary

Day 1	The George Hotel
Day 2	Scenic Hotel Punakaiki
Day 3	Scenic Hotel Punakaiki
Day 4	Westwood Lodge
Day 5	Westwood Lodge
Day 6	Lime Tree Lodge
Day 7	Queenstown Park Boutique Hotel
Day 8	Queenstown Park Boutique Hotel
Day 9	Queenstown Park Boutique Hotel
Day 10	The Cinema Suites
Day 11	The Cinema Suites
Day 12	Overnight Boat in Milford Sound
Day 13	Queenstown Park Boutique Hotel