



Auckland to Christchurch Splendour

A popular 11 day tour with a relaxed pace that allows plenty of time to explore the diverse New Zealand landscapes and scenery. From the North Island's rich Maori culture and modern cosmopolitan cities you'll venture south crossing the Cook Strait to the picturesque Marlborough Sounds, wildlife mecca of Kaikoura and alpine village of Hanmer Springs.

Starts in: Auckland
Finishes in: Christchurch
Length: 11days / 10nights
Accommodation: Hotel 3 star
Can be customised: Yes

This itinerary can be customised to suit you perfectly. We can add more days, remove days, change accommodations, mix it up, add activities to suit your interests or simply design and create something from scratch. Call us today to get your custom New Zealand itinerary underway.



Inclusions:

Includes: Late model rental cars
Includes: Fully inclusive rental car insurance (excess may apply)
Includes: Unlimited kms
Includes: Afterhours emergency support while touring
Included activity: Private Transfer Auckland Airport to your Auckland Accommodation with Tourcorp
Included activity: Electronic Travel Guide and In-Country Support App
Included activity: The Visitor Promise - Cultural Learning Course
Included activity: Interislander Ferry Wellington to Picton
10 breakfasts

Day 1



Private Transfer Auckland Airport to your Auckland Accommodation with Tourcorp

You will be met at the Auckland airport by the driver and transferred to your Auckland accommodation.

Welcome to Auckland

Welcome to Auckland, known in Māori as Tāmaki Makaurau. Auckland is New Zealand's vibrant "City of Sails," and the country's largest metropolitan area. Nestled between the Pacific Ocean and the Tasman Sea. Surrounded by native bush, lush rainforests, and pristine beaches, Auckland is a haven for both adventurers and urban explorers. Wander through world-class museums and galleries in the city centre or enjoy a peaceful retreat at the Auckland Gardens, where stunning landscapes showcase New Zealand's diverse flora. Stroll along the lively waterfront to savour fresh seafood and international cuisine at Viaduct restaurants. For an unforgettable perspective, ascend the iconic SkyTower, New Zealand's tallest structure, and take in panoramic views of the city and its picturesque islands.

SUGGESTED ACTIVITY - Harbour Sailing Cruise with Explore

Enjoy the City of Sails from the water on a relaxed harbour sailing yacht. This cruise offers a uniquely local experience experiencing the harbour under sail with a small vessel with an intimate and engaging atmosphere. View the stunning city sights while sailing on the inner Waitemata Harbour. Sail where the wind takes us while enjoying Auckland's city highlights; including sailing under the Harbour Bridge and other well-known landmarks along the harbour's edge. The crew's local knowledge will give you the best harbour sailing experience Auckland has to offer. Become the crew and help participate with the sailing experience take the helm while you carve through the water, or if you prefer just sit back and relax above deck.

Your accommodation: Sudima Auckland City

Conveniently located within easy walking distance of Auckland's bustling shopping, arts, dining and entertainment precincts and opposite the New Zealand International Convention Centre.



Day 2



Collect Rental Car

This tour's from price includes an intermediate-sized vehicle, setting you up for comfortable travels. Yet, we understand every adventure is unique! Feel free to select the perfect wheels from our incredible collection of rental cars, spanning from economy hatchbacks to premium SUVs.

Car Instructions

On collection of your rental car, you will be required to sign a rental agreement and provide a credit card for a security bond authorisation. Remember, the bond is only authorised, not charged, at this stage. While your rental rate may include coverage for mechanical breakdowns (please verify your specific car inclusions), you may also have the option to purchase roadside assistance for non-mechanical issues. All drivers must present a physical credit card, valid driving license and passport to be added to the agreement, with potential additional charges for extra drivers. Debit cards may be used on select vehicles. If you are presenting an international drivers license, this must be accompanied by the original domestic license. Drivers under 21 are not permitted, and those aged 21-24 may face a surcharge, both payable directly to the rental company. For detailed information, please refer to your rental car inclusions. See this important information if you are traveling between the North and South Islands on the ferry

Explore Auckland

Perched on the edge of a large natural harbour, New Zealand's 'City of Sails' offers the best of both worlds. Sandy beaches, native bush and lush rainforests give way to a vibrant urban culture. Spend time in the Viaduct Harbour, try your hand at sailing on America's Cup Yacht or take the ferry to nearby Waiheke Island for a gourmet food and wine experience. Venture to the top of Auckland's highest volcano, Mt Eden, for soaring views of the Hauraki Gulf or hop on the short ferry to Rangitoto Island and hike to the top of the volcanic island. Immerse yourself in nature at the expansive Auckland Botanic Gardens, sprawled across 156 acres of native forest, pack a picnic, soak up the sunshine, and enjoy the birdsong. Head up to the Sky Tower, standing over 300m tall, and have a meal in the 360-degree revolving restaurant. Scale the outermost perimeter of the Harbour Bridge or test your stomach with a bungee jump, then end your day on Ponsonby Road sampling upmarket culinary delights.

SUGGESTED ACTIVITY - Coast and Rainforest Full Day Tour with Bush and Beach - Lunch Included

Your full-day excursion takes you first to the Arataki Visitor Centre, the gateway to the Waitakere Ranges and a short drive from Auckland Central. Enjoy panoramic views extending from the Tasman Sea to the Pacific Ocean as you absorb the area's history and admire the magnificent traditional Māori carvings. Walk the regenerating rainforest where your experienced guide will detail local flora and fauna. Take in the giant tree ferns, and bubbling streams before venturing onto a wild west coast beach. Enjoy a picnic lunch before your eco-tour ends in an area of untamed original rainforest. Here, mature 200-300-year-old kauri trees have developed separately from the rest of the world for millions of years and this part of the rainforest is particularly rich in bird life due to a successful programme to eradicate pests.

Your accommodation: Sudima Auckland City

Conveniently located within easy walking distance of Auckland's bustling shopping, arts, dining and entertainment precincts and opposite the New Zealand International Convention Centre.

Meals included: Breakfast



Day 3



Auckland to Rotorua

Your drive south from Auckland begins by crossing the Bombay Hills, which mark the boundary of the greater Auckland area, before leading you into the rich, sprawling farmland of the Waikato region. The drive takes approximately 2.5 hours non-stop, but we recommend allowing 3 hours for a relaxed journey. For a fantastic leg-stretching stop, you may consider a slight detour into Hamilton to visit the renowned Hamilton Gardens (known for its amazing themed garden collection). Alternatively, the quirky small town of Tirau, famous for its buildings shaped like a giant sheep and sheepdog, is right on your main route and makes a quick and fun photo stop. As you continue south, the scenery transitions, and telltale signs of steam and other geothermal activity will signal your arrival into the fascinating thermal and cultural hub of Rotorua.

SUGGESTED ACTIVITY - Hobbiton Movie Set Tour from Shires Rest

In the heart of New Zealand, you can step into the lush pastures of the Shire with a guided tour of Hobbiton, as featured in The Lord of the Rings and The Hobbit Trilogies. Hobbiton is located just outside of Matamata in the heart of the lush Waikato farming region. Here you can visit such iconic Hobbit locations as Hobbit Holes, the Green Dragon Inn, the Mill and the Party Tree with a guide sharing behind-the-scenes tales and insight into the making of the films. Spend time wandering through Bagshot Row before being led inside a Hobbit Hole to view the detailed interior, designed to provide an authentic glimpse into the dwelling of a Hobbit.

Your accommodation: Sudima Lake Rotorua

Sudima Hotel Lake Rotorua boasts a location that is second-to-none, right on the shores of beautiful Lake Rotorua. Adjacent to the world-famous Polynesian Spa complex and just a short stroll to all the attractions in Rotorua.

Meals included: Breakfast



Day 4



Explore Rotorua

Peppered with natural hot springs, boiling mud pools and steaming geysers, Rotorua sits within one of the world's most active volcanic regions. Geothermal landmarks aside, this city of sulphur has a rich indigenous history. Home to several prominent Māori tribes, a visit to one of the Māori experiences should be high on your agenda, learn about the special meaning of pounamu-Greenstone with Mountain Jade, explore the geysers and arts of Te Puia or immerse in an evening with Te Pā Tū. An excursion to one of the area's wellness spas is also a must! Try the Polynesian Spa for an invigorating soak in its natural mineral hot springs, Wai Ariki offers an indulging and unwinding restorative journey or pay a quick visit to Secret Spot for a soak and a delicious smash burger! If it is a thrill you are looking for, spike your adrenaline at Rotorua Canopy Tours, soaring above the ancient native forest below. Alternatively, head up the Skyline Rotorua Gondola for soaring lake views, and ride the luge at night for an extra thrill. Make the most of your time in Rotorua with an excursion through the Wai-O-Tapu Thermal Wonderland, one of the area's most colourful volcanic attractions. Whatever you are after, Rotorua is almost certain to have it!

SUGGESTED ACTIVITY - National Kiwi Hatchery Experience

The National Kiwi Hatchery Experience is a special opportunity to gain insight into and view this highly regarded conservation centre. Developed with the visitor experience in mind, the hatchery boasts special viewing opportunities and is hosted by kiwi expert guides who ensure guests leave fully informed and all questions answered. Learn all about New Zealand's intriguing national icon and the efforts of the kiwi husbandry team, see and discover what it takes to hatch and rare chicks, and if you're lucky see baby chicks in person!

SUGGESTED ACTIVITY - Original Ziplining Experience with Rotorua Canopy Tours

Embark on a three-hour adventure through the native New Zealand forest. Journey through the beautiful forest canopy via an incredible network of trails, tree platforms, Ziplines and swing bridges. See breathtaking views of the woodland valleys and hills as you fly through tight openings in the trees. In between the thrill of the ziplines and suspended tree bridges, your guides will share their passion and knowledge for the forest and the conservation challenges to preserve it. It is important you read and understand the risks associated with this activity. For more information see [here](#).

SUGGESTED ACTIVITY - Te Pā Tū Evening Māori Cultural Experience - Dinner Included

New Zealand's Most Awarded Cultural Attraction, presenting Te Pā Tū. Feast on song, drama, tradition, and divine seasonal kai (cuisine) within the forest Pā (village) blanketed by towering Tawa trees, blazing bonfires, and a forest-formed amphitheatre. Te Pā Tū shares Māori history, traditions, and cultural aspirations across 4-hours of celebration and feasting. These events change with each season of the Maramataka, the Māori lunar calendar.

Your accommodation: Sudima Lake Rotorua

Sudima Hotel Lake Rotorua boasts a location that is second-to-none, right on the shores of beautiful Lake Rotorua. Adjacent to the world-famous Polynesian Spa complex and just a short stroll to all the attractions in Rotorua.

Meals included: Breakfast



Day 5



Rotorua to Wellington

The drive from Rotorua to Wellington takes you via the township of Taupō home to New Zealand's largest lake. Following the lakeshore South you'll pass Turangi and then ascend the central plateau onto the high country Rangipo Desert. Skirting the edge of Tongariro National Park, you'll reach the military town of Waikaremu before descending through rich farmland and the rural towns of Taihape and Mangaweka. Follow the coast through Paraparaumu, Paekakariki and Plimmerton to arrive at your destination, Wellington.

SUGGESTED ACTIVITY - Wai-O-Tapu Thermal Wonderland

Wai-O-Tapu Thermal Wonderland is a spectacular showcase of New Zealand's colourful and unique geothermal elements sculpted by thousands of years of volcanic activity. You will be introduced to a diversely different natural landscape, extending over 18-sq. km. Enjoy viewing the volcanic features as you walk at your own pace along well-defined tracks. Relax in the first-class Visitor Centre, home to the Gift Shop and Café facilities. Visit the Mud Pool, the largest in New Zealand, it was originally the site of a large mud volcano which was destroyed through erosion in the 1920s. See the history and beauty of the Lady Knox Geyser at 10:15 am every day where a daily eruption happens of up to 20 metres.

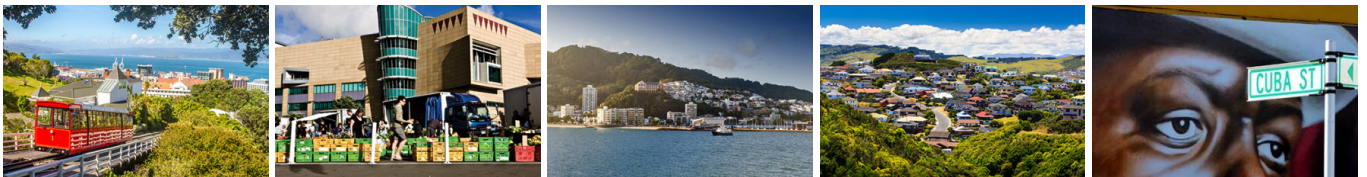
Your accommodation: Hotel Ibis Wellington

Hotel Ibis Wellington is ideally located in Featherston Street in the heart of Wellington City and easy walking distance to Wellington's famous cafe lifestyle.

Meals included: Breakfast



Day 6



Wellington

Wellington known in Māori as Te Whanganui-a-Tara is home to New Zealand's centre of government. Often referred to as 'mini Melbourne', this windy city is a melting pot of art, culture, food, and fashion. Quirky laneway bars, underground art shows, and hipster eateries make up its inner-city vibe, while a host of sandy beaches outside the urban bustle bring a cheerful holiday feel. Head to Te Papa Museum for a history lesson and a ticket to one of its many international exhibitions or jump aboard the Wellington Cable Car - the only running funicular railway in the country. For those with an eye for boutique, fashion wander through Cuba St to sample some of the city's best vintage stores. Break for coffee at a hipster cafe and be sure to snap a pic outside the 'Beehive', New Zealand's parliamentary debate chamber. Go behind the scenes at Weta Workshop Experience, the Oscar Award Winning design studio behind Lord Of The Rings, The Hobbit, and Avatar. If you're a foodie at heart, a two-hour round trip to Martinborough is a must-do. Take your time as you wind through spectacular wine country. For an educational day out, learn about New Zealand's native species at Zealandia, the world's first fully-fenced eco-sanctuary and home to over 40 types of endangered and native birds.

SUGGESTED ACTIVITY - Wellington Half Day Private Tour with Capital Personalized Tour

Witness the best sights of New Zealand's capital city up close and personal, before experiencing the beauty of the coastline that surrounds central Wellington and its harbour. On this tour, you will head for the hills of Mt Victoria to witness the stunning landscape of Wellington and its harbour below. You will then follow the coastline round to the Weta Cave Museum, which is the showpiece of Peter Jackson's film empire. After a drive around the south coast, you will head back into the city for a ride on the Cable Car and a walk around the Lady Norwood rose gardens. The tour concludes with a visit to the Beehive and our Parliament buildings.

Get the full experience to Wētā Workshop and back with a guided transfer. Wētā Workshop has been making cool stuff for film and TV since 1987. The crew has brought to life beloved characters and epic special effects for iconic blockbusters like The Lord of the Rings, The Hobbit, Avatar and Black Panther: Wakanda Forever. Step into Wētā Workshop Experiences and explore a world of creativity, physical effects and movie magic on a guided tour through our creative home base. You'll learn about the making of props, creatures and costumes created for your favourite films. Get hands-on with unique pieces from many departments, catch the artists at work and discover how Weta have grown into the award-winning workshop you see today.

Hotel Ibis Wellington is ideally located in Featherston Street in the heart of Wellington City and easy walking distance to Wellington's famous cafe lifestyle.

The 92 km journey between Wellington and Picton takes around 3 hours and has been described as 'one of the most beautiful ferry rides in the world'. Leaving Wellington Harbour the ferry passes many interesting points such as Pencarrow Head on top of which is New Zealand's oldest lighthouse (1859). Red Rocks is home to a seal colony and Oterangi Bay is the site which recorded the country's highest ever wind speed of 268 kph (167 mph).

Interislander's Premium Lounge for sensational views, child-free serenity, and locally sourced food and drink. Interislander's Premium Lounge has enhanced its offering to bring you an elevated travel experience across Cook Strait. Enjoy delicious food and drink, attentive service, and prime positions for appreciating the spectacular views. Whether you're looking to relax or chat with your travel companions, the Premium Lounge provides the ideal space. With varied seating options, you can choose a cosy spot to watch the stunning scenery and taste a selection of seasonal snacks included in your ticket.

An afternoon among the vines! Be immersed in the Marlborough wine country with the Sounds Connection half day wine tour. Get collected from your accommodation and taken through three or four hand-picked wineries to taste the award-winning produce this region is known for. Hear about the history of winemaking in Marlborough as well as learning the unique processes each winery goes through.

Your accommodation: Carnmore Chateau Marlborough

Carnmore Chateau Marlborough offers luxury accommodation in the heart of Blenheim, one of New Zealand's most famous wine regions. This boutique hotel prides itself on offering guests luxury accommodation with enviable attention to detail, overlooking Seymour Square Gardens and is just a short walk from Blenheim's town centre.

Meals included: Breakfast



Day 8



Blenheim to Kaikōura

Cross Marlborough and head towards one of the most spectacular coastlines of the South Island, the Kaikōura Coast. The road hugs the shore for around 50 kms and offers many chances to view native wildlife. To the east is the South Pacific Ocean and to the west the towering Kaikōura Ranges. Kaikōura Township is a bustling little place with many cafes, restaurants and shops, but the main reason for visiting here is the wildlife and it's one of the only places in New Zealand you can see whales year round.

SUGGESTED ACTIVITY - Zipline & Native Forest Tour with EcoZip Kaikoura

Enjoy a scenic journey to Kaikōura's beachfront airfield, followed by a 4WD adventure crossing the braided Kahutara River to Rakanui Station. Take in panoramic views of rolling farmland, lush valleys, and snowcapped mountains before embarking on an exhilarating 5-zipline course, including twin lines for side-by-side rides. Learn fascinating local history from expert guides and enjoy a walk through native forest, with a chance to plant a tree during winter as part of Eco Zip's conservation program. An unforgettable eco-adventure awaits! It is important you read and understand the risks associated with this activity before travel. For more information, please see [here](#)

Your accommodation: Sudima Hotel Kaikōura

This state-of-the-art waterfront hotel in Kaikōura has a 4.5 star rating with an outstanding in-house restaurant, a bar and conference facilities.

Meals included: Breakfast



Day 9



Kaikoura to Hanmer Springs

The drive from Kaikoura follows the spectacular coast before heading inland through North Canterbury's major wine region, The Waipara Valley. You'll see many sheep as you wind your way through the vineyards and small towns of Rotherham and Waiau before arriving into the alpine village of Hanmer Springs, your destination for the night.

SUGGESTED ACTIVITY - Ocean's Cabin with Whale Watch Kaikōura

Experience New Zealand's only marine-based whale-watching company. Whale Watch Kaikōura offers a once-in-a-lifetime, up-close encounter with the giant Sperm Whale. You are also likely to encounter New Zealand fur seals, dolphins, and albatross. Depending on the season you may also see Pilot, Blue, and Southern Right whales as well as migrating humpbacks. Often orcas can be spotted here and the world's smallest dolphin, the Hector's, occasionally makes an appearance.

Your accommodation: Clear Ridge Apartments

Designed with comfort and style in mind, the modern decor and spacious luxury apartments that Clear Ridge has to offer complement the spectacular alpine surroundings. This luxury accommodation complex offers a variety of fully-furnished apartments, with kitchen and laundry facilities as well as large private balconies or courtyards.

Meals included: Breakfast



Day 10



Hanmer Springs to Christchurch

Today you'll travel through the Waipara Valley, the fastest wine growing region in New Zealand and across the Canterbury Plains to Christchurch. You'll pass vast grassy plains and parched farming landscapes as you make your way over the Weka Pass and past small towns such as Amberley and Leithfield before arriving into the largest Port in the South Island, Christchurch.

SUGGESTED ACTIVITY - Christchurch Gondola

In the Heathcote Valley, just a 20-minute drive from the heart of Christchurch City, ride the Christchurch Gondola for nearly a kilometer to the collapsed rim of an extinct volcano, which exploded six million years ago. Take in the spectacular panoramic views of the central city, Lyttelton Harbour, Banks Peninsula, Canterbury Plains, and the distant peaks of the Southern Alps. Wander the summit complex, enjoy a coffee or lunch in the cafe, and choose one of many nature walks to explore or visit the Christchurch Discovery Ridge, a dramatic reconstruction of the history of the Port Hills and Christchurch.

SUGGESTED ACTIVITY - International Antarctic Centre General Admission

The International Antarctic Centre aims to recreate the atmosphere and environment of Antarctica, providing visitors with an interactive, fun, and educational experience. Feel the full Four Seasons of Antarctica, where you'll experience a custom-built snow and ice experience, then warm up in the Scott Base interior exhibit, a replica Antarctic field camp, or other informative displays in the gallery. You'll also learn about life in modern-day Antarctica, view real little blue penguins, and experience a thrilling ride in a Hagglund all-terrain vehicle.

Your accommodation: Scenic Hotel Cotswold

The Scenic Hotel Cotswold is just a few minutes walk to boutique shopping at Merivale and Hagley Park. The distinctive architecture of the Scenic Hotel Cotswold reflects Christchurch's image as the most English of cities outside of England.

Meals included: Breakfast



Day 11



Return Your Vehicle to Christchurch Airport

It's time to return your rental car and let the South Island journey come to an end. If time allows spend the day exploring more of Christchurch, we'd suggest a leisurely drive up the Port Hills for some great sites and then over to the harbour of Lyttelton, before circling through the tunnel and back to the airport to continue your journey home.

Farewell from Aotearoa / New Zealand

Bid farewell to Aotearoa / New Zealand, taking with you unforgettable memories of its breathtaking landscapes and incredible adventures. In Māori, it is said mā te wā, which is not goodbye, it is see you soon!

Tour details

Departures:	Daily
Tour type:	Nationwide Self Drive
Starts:	Auckland
Finishes:	Christchurch
Tour length:	11
Accommodation:	Hotel 3 star
Car/transport type:	

Accommodation summary

Day 1	Sudima Auckland City
Day 2	Sudima Auckland City
Day 3	Sudima Lake Rotorua
Day 4	Sudima Lake Rotorua
Day 5	Hotel Ibis Wellington
Day 6	Hotel Ibis Wellington
Day 7	Carmore Chateau Marlborough
Day 8	Sudima Hotel Kaikōura
Day 9	Clear Ridge Apartments
Day 10	Scenic Hotel Cotswold