



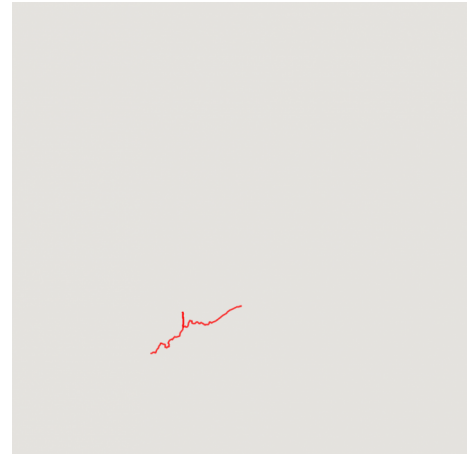
The Lavish Lakes of the South Island Tour

Arrive in Christchurch and journey to Lake Tekapo for stargazing at the Dark Sky Reserve. Take a private helicopter over glaciers, landing on a West Coast beach for a crayfish feast beside a bonfire. Continue through Mt Cook National Park to gaze upon Aoraki Mt Cook, then visit Lake Wanaka for wine tasting before staying at the luxurious Minaret Lodge. Conclude your adventure in Queenstown with a gourmet BBQ dinner aboard the TSS Earnslaw Steamship, soaking in stunning alpine views of Lake Wakatipu.



Starts in: Christchurch
Finishes in: Queenstown
Length: 7days / 6nights
Accommodation: Boutique Lodges & Hotels
Can be customised: Yes

This itinerary can be customised to suit you perfectly. We can add more days, remove days, change accommodations, mix it up, add activities to suit your interests or simply design and create something from scratch. Call us today to get your custom New Zealand itinerary underway.



Inclusions:

Includes: Late model rental cars

Includes: Unlimited kms

Included activity: Electronic Travel Guide and In-Country Support App

Included activity: The Visitor Promise - Cultural Learning Course

Included activity: Lake Tekapo Private Stargazing Tour with Alpha Crux

Included activity: Sir Edmund Hillary Alpine Centre Museum and Theatre Explorer Pass with Hermitage

Included activity: Wanaka Boutique Wine Tour with Wanaka Wine Tour

: 6 breakfasts, 1 lunch, 1 dinner, 1 special dinner

Includes: Fully inclusive rental car insurance (excess may apply)

Includes: Afterhours emergency support while touring

Included activity: Private Transfer from Christchurch Accommodation to Christchurch International Airport with Christchurch Touring Company

Included activity: Private transfer accommodation to airport to collect rental car

Included activity: Lavish West Coast Cuisine Adventure with Mackenzie Helicopters (Private Charter)

Included activity: The Panorama Room 3-course Dinner with The Hermitage Hotel

Included activity: TSS Earnslaw Cruise and Walter Peak Gourmet BBQ Dinner

Day 1



Welcome to Christchurch City

New Zealand's garden city is steadily being transformed into a vibrant urban destination. Encompassing a large green belt, it is known for its wide tree lined avenues and lush gardens. A great way to explore the city or easy way to see the sights or ride the historic trams across town to the renowned botanic gardens and the unique cardboard Transitional Cathedral, that's right it is built of cardboard!

Private Transfer from Christchurch Accommodation to Christchurch International Airport with Christchurch Touring Company

A private transfer will collect you from your accommodation and transfer you to Christchurch International Airport in time for your departing flight.

SUGGESTED ACTIVITY - Private Punting on the Christchurch Avon River

Relax and enjoy the tranquil Christchurch Botanic Gardens as you are expertly guided along the Avon River on a classic punting tour. You will be set aboard a handcrafted flat-bottomed boat, poled along by your punter in Edwardian attire from the platform at the rear of the boat. This private punt allows you to have the boat to yourselves for a 30-minute romantic ride offering an extra special experience. You will enjoy the spectacular flora that the Garden City is famous for from a unique perspective amidst fresh air.

Your accommodation: Merivale Manor House

Originally built in the 1880's, Merivale Manor has been transformed into elegant motel and apartment accommodation. Less than 200 metres to central Merivale with its premier shopping, restaurants, cafes and bars.



Day 2



Private transfer accommodation to airport to collect rental car

A private transfer will meet you at your accommodation and transfer you to Christchurch Airport to collect your rental car.

Collect Rental Car

This tour's from price includes an intermediate-sized vehicle, setting you up for comfortable travels. Yet, we understand every adventure is unique! Feel free to select the perfect wheels from our incredible collection of rental cars, spanning from economy hatchbacks to premium SUVs.

Christchurch to Lake Tekapo

Today you head into the heart of the South Island. After crossing the vast Canterbury Plains, you will reach the township of Geraldine, which offers an ideal refreshment stop before you head into Mackenzie Country.

Passing through places such as Beautiful Valley it's not hard to understand where the names originate. Ascending Burkes Pass and onto the high country plateau and the picturesque town of Lake Tekapo, the first of the large Southern Lakes. It's a great place to take a scenic flight, enjoy a guided horse trek, a boat trip on the pristine lake or just enjoy the magnificent views.

Lake Tekapo

Tekapo is New Zealand's highest lake, and it is renowned for its astonishing turquoise waters. This vibrant hue is due to fine rock particles suspended in the glacier-fed lake, reflecting light. A highlight for visitors is the iconic Church of the Good Shepherd, a stone building dedicated in 1935, which incorporates timber from the old Tekapo bridge. Nearby, a bronze sheepdog statue honors the vital role of these animals in the local farming community. For breathtaking panoramic views, drive up or walk up Mt John to the Canterbury University Observatory. A short distance away, Lake Alexandrina offers a peaceful retreat as a wildlife reserve with no motorized crafts allowed. For an unforgettable perspective, consider a scenic flight over Mt Cook National Park and Tasman Glacier.

Lake Tekapo Private Stargazing Tour with Alpha Crux

The Mackenzie Region is home to some of the clearest night skies in the world, and its Dark Sky Reserve was only the third of its kind in the world when it was created in 2012. The Aoraki Mackenzie International Dark Sky Reserve was also the first to be given a gold tier status and is the largest at 4,367 square kilometers. This tour will allow you to marvel at fascinating stars and deep sky objects in the southern night sky, getting up close to star clusters, nebulae, and the Milky Way under some of the world's purest night skies - without having to leave your own property. You will also be given the opportunity to pose for an Astro-portrait of yourself underneath the starry sky as a keepsake and reminder of this spectacular experience.

Your accommodation: Galaxy Boutique Hotel

The Galaxy Boutique Hotel is a gem in the Mackenzie Region! Enjoy a unique, high-quality stay just 500 meters from Tekapo Village Center and the stunning shores of Lake Tekapo. Only an hour from the majestic Mount Cook National Park and three hours from Christchurch and Queenstown. Your unforgettable getaway starts here!

Meals included: Breakfast



Day 3



Lavish West Coast Cuisine Adventure with Mackenzie Helicopters (Private Charter)

Climb on board your own private helicopter and fly over New Zealand largest glaciers and tallest peaks with your experienced pilot. Get up close to New Zealand's highest mountain, Aoraki and explore the ancient blue ice of the glaciers. Once you've flown over the mighty Alps you will discover the magic of the West Coast landscape, snow capped mountains descend into lush green coastal rainforests as you come into land on a secluded West Coast beach. Sip drinks beside your own private bonfire as your pilot dons a wetsuit and catches fresh crayfish straight from the sea. Climb back onboard for another exhilarating scenic flight before your own private dining experience high in the alpine with freshly caught crayfish.

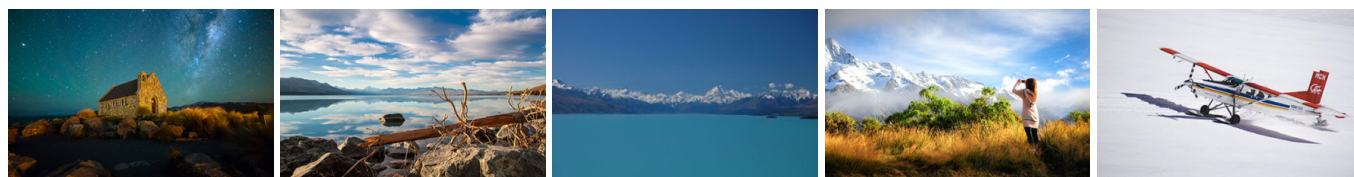
Your accommodation: Galaxy Boutique Hotel

The Galaxy Boutique Hotel is a gem in the Mackenzie Region! Enjoy a unique, high-quality stay just 500 meters from Tekapo Village Center and the stunning shores of Lake Tekapo. Only an hour from the majestic Mount Cook National Park and three hours from Christchurch and Queenstown. Your unforgettable getaway starts here!

Meals included: Breakfast, Lunch



Day 4



Lake Tekapo to Aoraki-Mt Cook National Park

Lake Pukaki is just another 30 minutes from Lake Tekapo and its from here you can be rewarded with spectacular views of the full length of the lake and into Aoraki Mt Cook National Park. In Mt Cook Village a myriad of activities are available from glacier landings by ski plane or helicopter, kayaking on a glacial lake and a host of walks to suit all abilities and time frames. At The Hermitage Hotel, the Sir Edmund Hillary Alpine Centre is a must-see.

Aoraki-Mt Cook National Park

At 3754m Aoraki-Mt Cook is Aotearoa-New Zealand's highest mountain, located deep in the heart of the Southern Alps. As well as its impressive beauty, Aoraki-Mt Cook National Park is also home to a huge range of awe-inspiring sights and activities. Take to the air with Mt Cook Ski Planes for a scenic flight that includes a glacier landing. At around 27 kilometres long the Tasman Glacier is New Zealand's longest and a Glacier Explorers tour allows you to see its unique features up close.

There are many short hikes in and around the park and these are well signposted around the village. Those with an interest in the night sky should take a Big Sky Stargazing tour with the Hermitage Hotel. The region is considered to have one of the clearest night skies in the world and is one of the few gold-rated dark sky reserves worldwide.

Visit the Sir Edmund Hillary Alpine Centre for insight into this region's mountain climbing history. You'll also learn of Sir Ed's incredible achievements and his dedication to helping others around the world.

Sir Edmund Hillary Alpine Centre Museum and Theatre Explorer Pass with Hermitage

A tribute to New Zealand's Sir Edmund Hillary, a humanitarian, ambassador, and one of the world's greatest explorers. The centre showcases the Aoraki Mount Cook region, the history of climbing, and early transport used throughout the region. This comprehensive museum details the life of Sir Edmund Hillary, the Hermitage, and provides access to the 126-seat custom-designed theatre. Check out the daily film schedule which includes 3D Movies, documentaries, and 360-degree digital dome features.

Walking Tracks in Aoraki-Mt Cook National Park

Aoraki-Mt Cook Village offers a variety of short scenic walks suitable for all ages and fitness levels. Start your adventure at the Department of Conservation Information Centre, where you can learn about track conditions, local history, and the area's wildlife. Here are a few popular walks to explore: Bowen Bush Walk: 10-minute return Glencoe Walk: 10-minute return Red Tarns Track: 2-hour return Kea Point Walk: 2-hour return Sealy Tarns Track: 3 - 4 hours return Please be aware that at Aoraki/Mount Cook, you will need to pay for parking at the White Horse Hill car park. The cost is \$5 per hour or \$25 for the full day. A 20-minute free period is available for quick drop-offs.

The Panorama Room 3-course Dinner with The Hermitage Hotel

Since first opening its doors in 1969, The Panorama Room has gained a reputation as being one of the best restaurants in New Zealand. This reputation is reflected in the numerous awards the restaurant has received over the years. A simple philosophy of using just the freshest, local ingredients, in particular from New Zealand's South Island, is still the secret to its success today. The menu has a strong international influence and reflects both the establishment's taste and the fact that most of the chefs have travelled and worked widely throughout the world.

Your accommodation: Hermitage Hotel, Aoraki Wing Premium

The Hermitage Hotel ringed by magnificent snow-capped peaks of the Southern Alps, is a world-renowned tourist destination and has been an icon of superior accommodation and dining since 1884.

Meals included: Breakfast, Dinner



Day 5



Aoraki Mt Cook National Park to Wanaka

Twizel, just south of Aoraki Mt Cook was the location of many Lord of the Rings movie scenes and a little further on is Omarama, the gliding capital of New Zealand. Wrinkly Rams is a local cafe with great coffee and fresh homemade food. The Lindis Pass is one of New Zealand's highest roads with the summit reaching 971 metres. The tussock covered hills offer an unusual contrast as you pass from the Mackenzie Basin and into Central Otago. The first Central Otago settlement you reach is the quaint village of Tarras, which has a number of boutique stores and a lovely cafe. Approaching Wanaka the wonderful alpine lake welcomes you to the town. Despite its size Wanaka has a wide variety of activities available. In winter it is without doubt New Zealand's premier ski destination with its very close proximity to Treble Cone and Cardrona ski fields. Mount Aspiring National Park sits to the western edge of the lake and offers wonderful walking tracks for all abilities; the Rob Roy Track is a great introduction to this spectacular park. Fishing, sailing and water skiing are popular pastimes on the lake and the many beach access points provide great spots for picnics and relaxing.

Wānaka

Nestled on the shores of one of New Zealand's largest lakes and framed by the stunning Southern Alps. Wānaka is an alpine village that perfectly blends adventure, breathtaking scenery, and a laid-back vibe. In winter, Wānaka transforms into a bustling hub as snow sports enthusiasts flock to its renowned ski fields, Treble Cone and Cardrona, as well as cross-country at Snow Farm. As the gateway to Mt Aspiring National Park, it offers endless opportunities for hikers, with trails winding through remote wilderness, majestic peaks, and serene river valleys. Closer to town, you'll find a network of scenic walking tracks, such as the popular Mount Iron Track, and from the lakefront, it is a short walk to "That Wanaka Tree". For thrill-seekers, Wānaka is an adrenaline playground, offering skydiving, paragliding, downhill biking, rock climbing, and jet boating.

Wanaka Wine Tours Boutique Central Otago Wine Trail

This small group wine tour (maximum 8) offers a relaxed and personal introduction to the wines and scenery of the Central Otago region. This tour is a great way to explore award-winning vineyards hidden amongst the rugged landscape of Central Otago. Visit and enjoy tastings at 4 Central Otago vineyards including a delicious mid-afternoon platter to enjoy with your tastings. You'll also discover the history of the region with a visit to Old Cromwell Town, a charming heritage precinct that has been revitalised into a boutique arts and crafts village.

Your accommodation: Edgewater Wanaka

Edgewater is Wanaka's leading hotel located right on the edge of Lake Wanaka. A short stroll to the town centres shops, cafes and restaurants and close to many walking trails the resort is ideal to explore this wonderful Alpine setting.

Meals included: Breakfast



Day 6



Wanaka to Queenstown

Leaving Wanaka, you head over New Zealand's highest sealed road, Crown Range Road, before dropping into Queenstown. This drive only takes about an hour, but you should allow more time to enjoy the magnificent scenery and explore the walks and many stops en route, including the Cardrona Distillery, wonderful views from Crown Range's highest point over Queenstown, the picturesque town of Arrowtown, and if time allows, even the wineries in Gibbston.

Queenstown

Queenstown known in Māori as Tāhuna, is home to many adrenaline-inducing activities. Nestled on the shores of Lake Wakatipu, this alpine town has very distinct seasons, and most adrenaline-filled activities can be accessed year-round. Queenstown is home to jet boating, bungy jumping, rafting, skydiving, paragliding, and even indoor thrills. If you want that rush - head out on the Shotover Jet, dive off the Nevis Bungy, freefall on the Canyon Swing, or Zip line the Gondola. While arguably the brightest gem in New Zealand's crown, Queenstown offers far more than an action-packed getaway. If you're looking for a slightly slower pace, there are plenty of recreational activities, including hiking and biking trails to explore, guided tours, boat cruises, scenic flights, or spa and wellness options to help you get away. Head to the lakefront, eat at one of the al fresco eateries, and soak up the local vibes; catch a ride on the iconic 100-year-old steamship the TSS Earnslaw; or take the Skyline Gondola and enjoy bird's-eye views of the Remarkables mountain ranges and Lake Wakatipu. Pack a picnic and go for a hike, only 20 minutes from Central Queenstown, Coronet Peak opens for summer sightseeing. You can ride the Peak Gondola to the top for panoramic views and hike the trails, or go for a bike ride on many excellent biking trails. In winter, Queenstown becomes a world-class winter resort, with four ski areas and a range of activities, bars, restaurants, and ways to relax and unwind.

TSS Earnslaw Cruise and Walter Peak Gourmet BBQ Dinner

Enjoy a quintessential Kiwi experience, a delicious gourmet BBQ buffet meal, and a farm demonstration in a stunning lakeside setting. Take in the stunning views of Lake Wakatipu and its surroundings as you cruise across the lake to the historic Walter Peak high country farm aboard the TSS Earnslaw Steamship. Enjoy the ambiance of the heart of the stately homestead while your Colonel's Homestead Restaurant chef prepares a gourmet BBQ dinner. Your seasonal menu includes an extensive selection of local New Zealand produce, including succulent meats and a selection of delicious vegetables and salads. Complete your meal with your choice of delicious desserts, or New Zealand cheeses. After dinner, watch the farm dogs in action with a sheep-herding demonstration and say hello to the other farm animals. Finally, cruise home under the southern stars and enjoy the fresh night air as the lights of Queenstown draw ever closer.

Your accommodation: Queenstown Park Boutique Hotel

Queenstown Park Hotel is a boutique hotel with a modern romantic style in the heart of New Zealand's adventure capital. Set in peaceful parkland, savour views of Queenstown's majestic mountains. Enjoy easy access to the vibrant town centre where shopping, cafes and nightlife nestled on the shores of spectacular Lake Wakatipu.

Meals included: Breakfast, Speciality Dinner



Day 7



Return your rental car

Return your rental vehicle to your designated depot before your next adventure.

Farewell from Aotearoa / New Zealand

Bid farewell to Aotearoa / New Zealand, taking with you unforgettable memories of its breathtaking landscapes and incredible adventures. In Māori, it is said mā te wā, which is not goodbye, it is see you soon!

Tour details

Departures:	Daily
Tour type:	Self Drive Tour (FTNZ ONLY)
Starts:	Christchurch
Finishes:	Queenstown
Tour length:	7
Accommodation:	Boutique Lodges & Hotels
Car/transport type:	

Accommodation summary

Day 1	Merivale Manor House
Day 2	Galaxy Boutique Hotel
Day 3	Galaxy Boutique Hotel
Day 4	Hermitage Hotel, Aoraki Wing Premium
Day 5	Edgewater Wanaka
Day 6	Queenstown Park Boutique Hotel