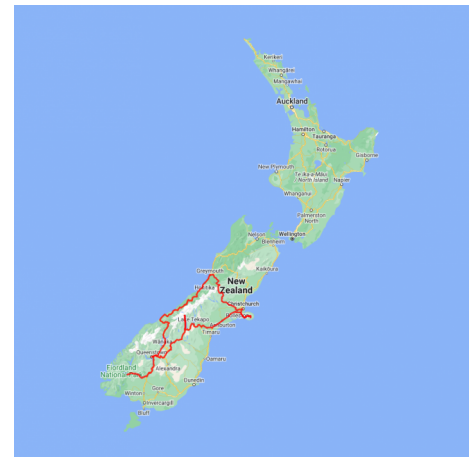


Fiords, Glaciers and Mountains Family Adventure

Explore the magnificent Akaroa Harbour and its wildlife, the mountains and glacier lake of Mt Cook National Park before heading to the resort town of Queenstown for 3 nights. Enjoy a trip on the TSS Earnslaw crossing Lake Wakatipu, a Nomad Safari 4WD trip and a Shotover Jet Boat ride. A highlight is a full day trip to Doubtful Sound before you head north to the West Coast. Explore the magnificent glaciers and rainforest and enjoy a scenic helicopter flight with a snow landing. Return to Christchurch crossing the Southern Alps on board the Tranz Alpine Scenic Train.

Starts in: Christchurch
 Finishes in: Christchurch
 Length: 10days / 9nights
 Accommodation: Motels
 Can be customised: Yes

This itinerary can be customised to suit you perfectly. We can add more days, remove days, change accommodations, mix it up, add activities to suit your interests or simply design and create something from scratch. Call us today to get your custom New Zealand itinerary underway.



Inclusions:

Includes: Late model rental cars

Includes: Unlimited kms

Includes: Airport & ferry terminal rental car fees

Includes: Comprehensive tour pack (detailed itinerary, driving instructions, map/guidebooks, brochures)

Included activity: Private transfer Christchurch International Airport to your accommodation

Included activity: Private transfer accommodation to Christchurch Airport

Included activity: Glacier Explorers

Included activity: Lord of the Rings - Safari of the Scenes Queenstown Tour

Included activity: Doubtful Sound Wilderness Cruise from Queenstown with RealNZ

Included activity: TranzAlpine Scenic Train: Greymouth to Christchurch

Includes: Fully inclusive rental car insurance (excess may apply)

Includes: GPS navigation

Includes: Additional drivers

Includes: 24/7 support while touring New Zealand

Included activity: Electronic Travel Guide and In-Country Support App

Included activity: Akaroa Harbour Nature cruise

Included activity: TSS Earnslaw Cruise and Walter Peak Gourmet BBQ Dining

Included activity: Shotover Canyon Jet Boat Ride

Included activity: Twin Glacier Scenic Helicopter Flight with The Helicopter Line

Included activity: Shared Transfer from the Railway Station to a City Hotel with Christchurch Touring Company

Day 1



Private transfer Christchurch International Airport to your accommodation

On arrival, you will be met by a private driver and transferred to your Christchurch accommodation.

Welcome to Christchurch City

Christchurch New Zealand's garden city is steadily being transformed into a vibrant urban destination. Encompassing a large green belt, it is known for its wide tree lined avenues and lush gardens. A great way to explore the city or easy way to see the sights or ride the historic trams across town to the renowned botanic gardens and the unique cardboard Transitional Cathedral, that's right it is built of cardboard!

Your accommodation: Bella Vista Christchurch

Bella Vista Motel Christchurch offers a great range of comfortable modern units with excellent facilities. Enjoy the convenience of being located in close proximity to the Christchurch CBD, shops, entertainment and other activities.



Day 2



Collect your rental car

This tour can be priced with any of the rental cars available in our fantastic range, from economy hatchbacks to prestige saloons and SUV's.

Christchurch to Akaroa

The Banks Peninsula offers a great contrast to the South Island's largest city. Just around a 1 1/2 hours drive from the city centre are rolling green hills, streams, golden sand beaches and small settlements that offer a unique insight into New Zealand's history and development. Just on the other side of the Port Hills is Lyttelton, a busy port town that was crucial to the development of Christchurch and the Canterbury Plains. Following the road around the beautiful natural harbour the names, such as Magazine Bay, Battery Point, Corsair Point and Governors Bay, remind of the importance the navy placed on this harbour.

The Banks Peninsula itself is actually the remains of a long extinct volcano, the rim of which collapsed some time ago allowing the sea to flood into and create what is now the Akaroa Harbour. In 1840 French colonists settled in Akaroa in a bid to stake a claim for the South Island. Unbeknownst the British had already declared sovereignty and a long drawn out dispute ensued with the British eventually being given government. However the French stayed and made this stunning part of the South Pacific their home and still to this day the town boasts French street names and every year a French Festival is held.

The Harbour itself is teeming with wildlife and a nature cruise is a must do activity. One of the world's smallest and rarest dolphins, hectors dolphin, are often seen and cruises also offer excursions with the chance to swim amongst them.

Akaroa Harbour Nature Cruise

Experience majestic scenery and stunning wildlife daily on a Black Cat Akaroa Harbour Nature Cruise. You'll see the rare, native dolphin – the Hector's or New Zealand Dolphin. There's also the chance to spot the world's smallest penguin, the White Flipped Little Blue Penguin, Fur Seals and other sea birds.

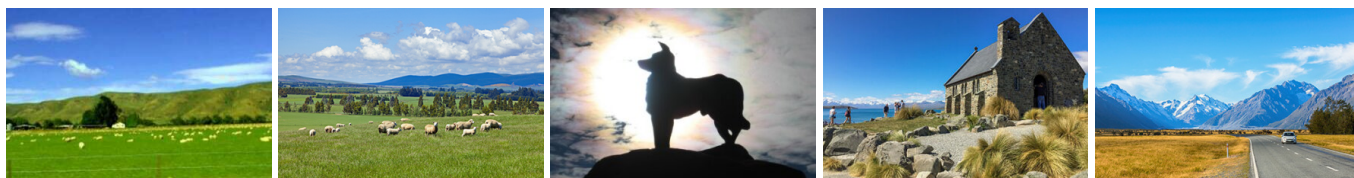
Other cruise highlights are some majestic volcanic cliffs (including the impressive Cathedral Cave) and signs of Akaroa's fascinating past including early Maori, French and British settlements.

Your accommodation: Criterion Motel

The Criterion Motel offers studio apartments with spectacular views over Akaroa Harbour. You're also just a short walk from the fantastic cafes and restaurants that Akaroa offers.



Day 3



Akaroa to Aoraki Mt Cook National Park

Today you head into the heart of the South Island. Crossing the vast Canterbury Plains along the inland scenic route the first township of Geraldine offers an ideal refreshment stop before you head into Mackenzie country.

Passing through places such as Beautiful Valley it's not hard to understand where the names originate. Ascending Burkes Pass and onto the high country plateau and the picturesque town of Lake Tekapo, the first of the large Southern Lakes. It's a great place to take a scenic flight, enjoy a guided horse trek, a boat trip on the pristine lake or just enjoy the magnificent views.

Lake Pukaki is just another 30 minutes from Lake Tekapo and its from here you can be rewarded with spectacular views the full length of the lake and into Aoraki Mt Cook National Park. In Mt Cook Village a myriad of activities are available from glacier landings by ski plane or helicopter, kayaking on a glacial lake and a host of walks to suit all abilities and time frames. At The Hermitage Hotel the Sir Edmund Hillary Alpine Centre is a must see.

Please note: There are no food shops at Mt Cook, and dinner options are limited to one restaurant. If you wish to self-cater, you must stock up before arriving in Mt Cook, or make dinner reservations in advance.

Glacier Explorers Mt. Cook

Experience 500 year old icebergs up-close on the Mt Cook terminal lake. The Glacier Explorers tour is the only one of its kind in New Zealand and one of only three in the world! Very few glaciers terminate into lakes and even fewer of them are accessible. See towering ice cliffs and floating icebergs from the safety of a specially designed boat. These boats provide a safe way to view unseen and inaccessible areas of New Zealand's largest glacier The Tasman.

Your accommodation: Mt Cook Motel

Mt Cook Motel is located in the centre of Mt. Cook village. The self-contained units are spacious and all are surrounded by alpine mountain views.



Day 4



Aoraki Mt Cook National Park to Queenstown

Leaving the alpine region of Aoraki Mt Cook, you'll travel through the lakeside town of Twizel, then a little further to Omarama the gliding capital of New Zealand. Continue on over the Lindis Pass, one of New Zealand's highest roads with a summit of 971 metres. Arrive in the quaint village of Tarras, then continue on a short way to the historic Bendigo Reserve, one of Otago's original gold mining settlements.

Follow the road to Cromwell, and keep going through the sheer cliffs of the Kawarau Gorge towards Gibbston, one of New Zealand's premier wine growing regions. See the historic Kawarau Bridge where you can bungee jump or relax and watch others take the plunge. Approaching Queenstown, the Remarkables mountain range comes into view as you arrive into the adventure capital of New Zealand.

TSS Earnslaw cruise to Walter Peak including gourmet BBQ dinner and a farm tour

Enjoy a quintessential Kiwi experience, a delicious gourmet BBQ buffet meal and a farm demonstration in a stunning lakeside setting. Take in the stunning views of Lake Wakatipu and its surroundings as you cruise across the lake to the historic Walter Peak high country farm aboard the TSS Earnslaw Steamship.

Enjoy the ambience of the heart of the stately homestead while your Colonel's Homestead Restaurant chef prepares a gourmet BBQ dinner. Your seasonal menu includes an extensive selection of local New Zealand produce, including succulent meats and a selection of delicious vegetables and salads. Complete your meal with your choice of delicious desserts, New Zealand cheeses, tea and coffee. After dinner, watch the farm dogs in action with a sheep-herding demonstration and say hello to the other farm animals. Finally, cruise home under the southern stars and enjoy the fresh night air as the lights of Queenstown draw ever closer.

Your accommodation: Scenic Suites Queenstown

Scenic Suites Queenstown offers guests exquisite style, comfort and spectacular views over Lake Wakatipu and the Southern Alps. The hotel prides itself on its four star hospitality that will make your stay in Queenstown even more memorable.



Day 5



Safari of the Scenes Queenstown Tour

For those keen on the Hobbit and Lord of The Rings films, join Nomad Safaris for an unexpectedly delightful journey. In safari-equipped 4WD vehicles, you will be taken on a true off-road adventure. Experienced guides will take you on a breathtaking excursion through diverse scenery around the Whakatipu Basin. See historic Arrowtown and go over the Arrow River, as well as experiencing the truly remarkable views of the lake and mountain surround from the Skippers Canyon Saddle. Although no sets remain intact, the landscapes are instantly recognisable. Some of the sites you will visit during this tour include the Misty Mountains, Pillars of Kings and the Ford of Bruinen.

Shotover Canyon River Jet Boat Adventure

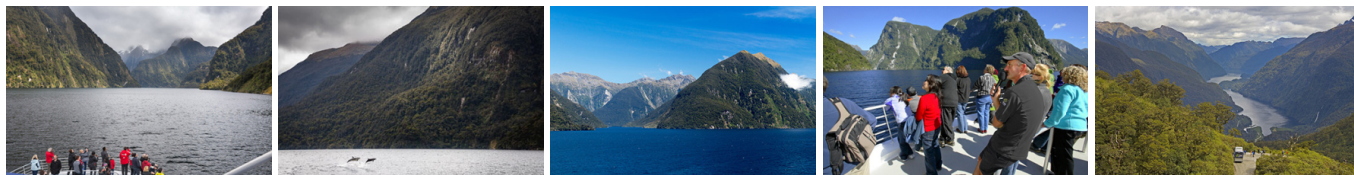
Riding the iconic 'Big Red' Jet Boat through the narrow Shotover Canyon is an exhilarating experience not to be missed. Your skilled jet boat driver pushes the boat to 85 kph, skimming across shallow water and past towering canyon walls. This 25 minute white water ride includes 360 degree spins and maximum thrills.

Your accommodation: Scenic Suites Queenstown

Scenic Suites Queenstown offers guests exquisite style, comfort and spectacular views over Lake Wakatipu and the Southern Alps. The hotel prides itself on its four star hospitality that will make your stay in Queenstown even more memorable.



Day 6



Doubtful Sound Wilderness Cruise from Queenstown

On boarding the luxury glass-roofed coach in Queenstown, enjoy a relaxing trip along the shores of Lake Wakatipu and through the rolling countryside to Manapouri. From Pearl Harbour, Manapouri, you cruise across picturesque Lake Manapouri to West Arm and then travel by coach over Wilmot Pass through dense rainforest. There are opportunities along the way to examine the plant life and view the spectacular scenery. Once at Doubtful Sound you board the catamaran, Commander Peak, for a 3 hour cruise of beautiful Doubtful Sound to the Tasman Sea. On board there is excellent viewing of waterfalls, rainforest and mountains. Of particular interest, if sighted, are fur seals basking on the rocks, or a resident pod of bottlenose dolphins. Rare Fiordland crested penguins are sometimes encountered in the right season. An interesting on board commentary keeps you informed and on the return journey, the vessel's engines are turned off and visitors are treated to the 'Sound of Silence'.

Your accommodation: Scenic Suites Queenstown

Scenic Suites Queenstown offers guests exquisite style, comfort and spectacular views over Lake Wakatipu and the Southern Alps. The hotel prides itself on its four star hospitality that will make your stay in Queenstown even more memorable.



Day 7



Queenstown to Franz Josef Glacier via Wanaka

From Queenstown you'll cross the Crown Range, the highest sealed road in New Zealand to arrive in the Alpine town of Wanaka, gateway to Mt Aspiring National Park. Skirting the shores of both Lake Wanaka and Hawea, you will enter the small town of Makarora. Stop at Blue Pools for a 1-hour return walk through the native beech forest to a glacier-fed swimming hole. Continue on through the remote seaside settlement of Haast before heading up the wild West Coast highway you pass through ancient temperate rainforests while getting sneak peeks of the wild coast beaches occasionally. Paringa Salmon Farm is worth a stop to stretch your legs, feed the fish, and stop for lunch and refreshments. Keep heading North and be sure to enjoy the view of the ever-changing towering snowcapped Southern Alps Mountain Range. Fox Glacier welcomes you first, then comes your destination for the night Franz Josef township.

Your accommodation: Glenfern Villas

Just outside the main Franz Josef village, Glenfern Villas is the ideal base for you to enjoy everything the glorious West Coast has to offer. Well equipped self-contained villas provide all you need.



Day 8



Twin Glacier Scenic Helicopter Flight with The Helicopter Line

Take a spectacular scenic flight over two of New Zealand's most famous glaciers. Land at the head of one and view the incredible sight of this frozen river as it winds its way through ancient carved valleys. Should weather not be suitable to take this flight you are able to transfer your booking onto a similar tour on any of the Helicopter Line's operations in Queenstown or Mt Cook.

SUGGESTED ACTIVITY - Okarito Lagoon Guided Kayak Trip

Kayaking is by far the best way to enjoy the flora, fauna and scenic grandeur of New Zealand's largest unmodified coastal wetland. Previous experience is not necessary. Okarito Lagoon covers more than 3240 hectares of shallow open water and is well known for its outstanding bird life, including white heron and royal spoonbill. Exploring the open water and river channels that lead you deep into the heart of the rainforest is like stepping back in time to pre-European conditions and on a clear day you enjoy fantastic views of Mt. Cook and the Southern Alps. Your guide will take you to their favourite spots where you'll discover the flora, fauna and history of the lagoon.

Your accommodation: Glenfern Villas

Just outside the main Franz Josef village, Glenfern Villas is the ideal base for you to enjoy everything the glorious West Coast has to offer. Well equipped self-contained villas provide all you need.



Day 9



Franz Josef to Greymouth Train Station

Today head north along the mighty West Coast highway you pass through ancient temperate rainforests while getting sneak peeks of the wild coast beach occasionally. Whataroa is the next town where you can see one of the world's rarest birds, the New Zealand white heron or Kotuku nest at the Waitangi Roto Nature Reserve, and guided tours from October to March will take you there.

Ross is the site of an old gold mining town and some of the old buildings and workings remain. In fact, Ross is still home to one of the few working gold mines left in New Zealand and the local information center offers you the chance to pan for gold.

Hokitika is a great place to explore craft and gift stores and head to the coast and take in the endless sea views. The Jade or Greenstone on offer in Hokitika is probably some of the best you will see in the country. The Hokitika Gorge is located 45 minutes inland and offers turquoise waters flowing through a narrow gorge. A great short walk will deliver you to this piece of paradise.

Continue on to Greymouth, the largest town on the West Coast and the starting point for the next leg of your journey the TranzAlpine Scenic Train. Drop your rental car at the Greymouth Train Station depot located at the train station building before boarding your train to Christchurch.

TranzAlpine Scenic Train: Greymouth to Christchurch

Considered one of the world's great train journeys, the TranzAlpine Scenic Train takes you from Greymouth to Christchurch. You'll travel across the South Island from the west to the east coast through Arthur's Pass National Park. From the comfort of your carriage see lush beech forest, deep river valleys and the spectacular peaks of the Southern Alps. Descend to the windswept Canterbury Plains before arriving in the city of Christchurch.

Shared Transfer from the Railway Station to a City Hotel with Christchurch Touring

On arrival at the Christchurch railway station, you will be met by a driver and transferred to your Christchurch accommodation.

Your accommodation: Bella Vista Christchurch

Bella Vista Motel Christchurch offers a great range of comfortable modern units with excellent facilities. Enjoy the convenience of being located in close proximity to the Christchurch CBD, shops, entertainment and other activities.



Day 10



Private transfer accommodation to Christchurch Airport

A private transfer will collect you from your accommodation and transfer you to Christchurch Airport in time for your departing flight.

Tour details

Departures:	Daily
Tour type:	South Island Self Drive
Starts:	Christchurch
Finishes:	Christchurch
Tour length:	10
Accommodation:	Motels
Car/transport type:	

Included activities

Includes	Private airport transfers
Includes	Private train station transfers
Includes	TranzAlpine Train from Greymouth to Christchurch
Includes	Akaroa Harbour Nature Cruise
Includes	Glacier Explorers Tour, Mt Cook National Park
Includes	Safari of the Scenes Wakatipu Basin tour, Queenstown
Includes	TSS Earnslaw cruise and dinner at Walter Peak high country farm, Queenstown
Includes	Shotover jet boat ride
Includes	Doubtful Sound Wilderness Cruise
Includes	Twin Glaciers Scenic Helicopter Flight, Franz Josef
Includes	Entry to Glacier Hot Pools

Accommodation summary

Day 1	Bella Vista Christchurch
Day 2	Criterion Motel
Day 3	Mt Cook Motel
Day 4	Scenic Suites Queenstown
Day 5	Scenic Suites Queenstown
Day 6	Scenic Suites Queenstown
Day 7	Glenfern Villas
Day 8	Glenfern Villas
Day 9	Bella Vista Christchurch