



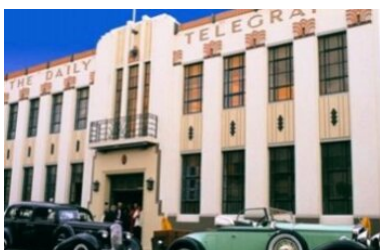
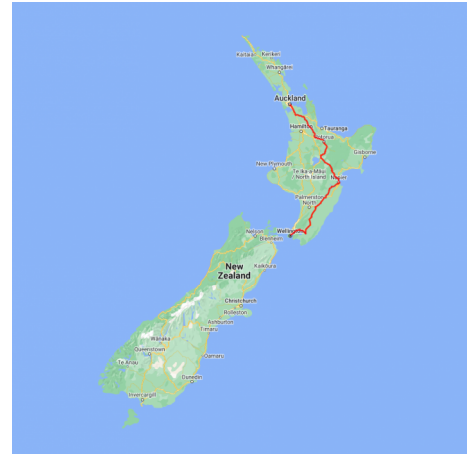
## Accessible Auckland to Wellington Highlights

Travel through the heart of the North Island on this short 'highlights' New Zealand self-drive tour. From Auckland journey south through the Waikato countryside to Rotorua, the Maori culture capital of New Zealand. It's then on to the Art Deco city of Napier in the Hawkes Bay, home to New Zealand's oldest vineyards. The final leg of your whirlwind tour of the North Island takes you past sheep farms and wineries as you travel through the Wairarapa region to your final destination, the capital city of Wellington.



Starts in: Auckland  
Finishes in: Wellington  
Length: 8days / 7nights  
Accommodation: Hotel 4 star  
Can be customised: Yes

This itinerary can be customised to suit you perfectly. We can add more days, remove days, change accommodations, mix it up, add activities to suit your interests or simply design and create something from scratch. Call us today to get your custom New Zealand itinerary underway.



### Inclusions:

Includes: Late model rental cars  
Includes: Fully inclusive rental car insurance (excess may apply)  
Includes: Unlimited kms  
Includes: Afterhours emergency support while touring  
Included activity: Private Transfer Auckland Airport to your Auckland Accommodation with Tourcorp  
Included activity: Electronic Travel Guide and In-Country Support App  
Included activity: All Blacks Experience  
Included activity: Auckland Sky Tower Admission  
Included activity: Europcar Rental Car Delivery  
Included activity: Te Pā Tū Evening Māori Cultural Experience - Dinner Included  
Included activity: Martinborough Half Day Wine Tour with Martinborough Wine Tours  
7 breakfasts

## Day 1



### Private Transfer Auckland Airport to your Auckland Accommodation with Tourcorp

You will be met at the Auckland airport by the driver and transferred to your Auckland accommodation.

### Welcome to Auckland

Welcome to Auckland, known in Māori as Tāmaki Makaurau. Auckland is New Zealand's vibrant "City of Sails," and the country's largest metropolitan area. Nestled between the Pacific Ocean and the Tasman Sea. Surrounded by native bush, lush rainforests, and pristine beaches, Auckland is a haven for both adventurers and urban explorers. Wander through world-class museums and galleries in the city centre or enjoy a peaceful retreat at the Auckland Gardens, where stunning landscapes showcase New Zealand's diverse flora. Stroll along the lively waterfront to savour fresh seafood and international cuisine at Viaduct restaurants. For an unforgettable perspective, ascend the iconic SkyTower, New Zealand's tallest structure, and take in panoramic views of the city and its picturesque islands.

### SUGGESTED ACTIVITY - Harbour Sailing Cruise with Explore

Enjoy the City of Sails from the water on a relaxed harbour sailing yacht. This cruise offers a uniquely local experience experiencing the harbour under sail with a small vessel with an intimate and engaging atmosphere. View the stunning city sights while sailing on the inner Waitemata Harbour. Sail where the wind takes us while enjoying Auckland's city highlights; including sailing under the Harbour Bridge and other well-known landmarks along the harbour's edge. The crew's local knowledge will give you the best harbour sailing experience Auckland has to offer. Become the crew and help participate with the sailing experience take the helm while you carve through the water, or if you prefer just sit back and relax above deck.

### All Blacks Experience

See what it takes to make, shape and be an All Black. Experience first-hand the excitement and emotion of game day. Discover the stories behind some of world rugby's most famous players, moments, and matches.

This guided experience introduces you to the game of rugby including state-of-the-art displays combining sound, images, interactive technology, and hands-on activities. Discover New Zealand's deep passion for our national sport, experience the full force of the All Blacks haka, and tackle interactive zones where you can try out your kicking, catching, line-out, and accuracy skills against legendary All Blacks.

### Auckland Sky Tower Admission

Standing at 328 meters (just over 1000 feet) - the Sky Tower is the tallest man-made structure in New Zealand and offers panoramic views of the Auckland landscape. Travel in the glass-fronted lift to one of three spectacular viewing platforms, or for a little more excitement do a SkyWalk - an outside loop around the pergola 192 meters (just over 600 feet) above ground. If you're really bold, Take the quick way down and SkyJump off the tower - a controlled free fall to the base.

Inside, the Sky Lounge offers coffee and light meals while the iconic Orbit Restaurant is Auckland's only 360-degree revolving dining experience.

### Your accommodation: Legacy Airedale Hotel

Legacy Airedale Hotel Auckland is located on a landmark site on Queen Street in the heart of Auckland City. This superb art deco style hotel is conveniently located in the city's vibrant cultural, shopping and central business district.



## Day 2



Your Europcar Rental Car will be delivered to you



5 door 2WD SUV

Air Conditioning, Bluetooth and Apple CarPlay

Engine: 2.5 litre

Automatic

Passengers: 5 passengers

Luggage Space: 4 large bags

Maximum Excess/ Liability: NZD\$0

---

## Auckland to Rotorua

The drive south from Auckland takes you past the the Bombay Hills which mark the outer boundary of greater Auckland area and it's here you turn inland to central Waikato. You'll soon go through the town of Matamata where you can visit the fully intact Hobbiton film set used in the shooting of the Lord of The Rings and Hobbit trilogies. Continuing on, you'll pass several small farming communities before telltale signs of steam and other geothermal activity signal your arrival into Rotorua.

---

## SUGGESTED ACTIVITY - Hobbiton Movie Set Tour from Shires Rest

In the heart of New Zealand, you can step into the lush pastures of the Shire with a guided tour of Hobbiton, as featured in The Lord of the Rings and The Hobbit Trilogies. Hobbiton is located just outside of Matamata in the heart of the lush Waikato farming region. Here you can visit such iconic Hobbit locations as Hobbit Holes, the Green Dragon Inn, the Mill and the Party Tree with a guide sharing behind-the-scenes tales and insight into the making of the films. Spend time wandering through Bagshot Row before being led inside a Hobbit Hole to view the detailed interior, designed to provide an authentic glimpse into the dwelling of a Hobbit.

---

## Your accommodation: Novotel Lakeside Rotorua

Novotel Lakeside Rotorua is a 4.5 star property located on the picturesque shores of Lake Rotorua and set in park surroundings. Just minutes from the city centre, cafes and restaurants plus the numerous tourist attractions including water activities on the lake, a golf course, museum, and thermal reserves.

Meals included: Breakfast



---

## Day 3



## Explore Rotorua

Peppered with natural hot springs, boiling mud pools and steaming geysers, Rotorua sits within one of the world's most active volcanic regions. Geothermal landmarks aside, this city of sulphur has a rich indigenous history. Home to several prominent Māori tribes, a visit to one of the Māori experiences should be high on your agenda, learn about the special meaning of pounamu-Greenstone with Mountain Jade, explore the geysers and arts of Te Puia or immerse in an evening with Te Pā Tū. An excursion to one of the area's wellness spas is also a must! Try the Polynesian Spa for an invigorating soak in its natural mineral hot springs, Wai Ariki offers an indulging and unwinding restorative journey or pay a quick visit to Secret Spot for a soak and a delicious smash burger! If it is a thrill you are looking for, spike your adrenaline at Rotorua Canopy Tours, soaring above the ancient native forest below. Alternatively, head up the Skyline Rotorua Gondola for soaring lake views, and ride the luge at night for an extra thrill. Make the most of your time in Rotorua with an excursion through the Wai-O-Tapu Thermal Wonderland, one of the area's most colourful volcanic attractions. Whatever you are after, Rotorua is almost certain to have it!

---

## SUGGESTED ACTIVITY - National Kiwi Hatchery Experience

The National Kiwi Hatchery Experience is a special opportunity to gain insight into and view this highly regarded conservation centre. Developed with the visitor experience in mind, the hatchery boasts special viewing opportunities and is hosted by kiwi expert guides who ensure guests leave fully informed and all questions answered. Learn all about New Zealand's intriguing national icon and the efforts of the kiwi husbandry team, see and discover what it takes to hatch and rare chicks, and if you're lucky see baby chicks in person!

---

## Te Pā Tū Evening Māori Cultural Experience - Dinner Included

New Zealand's Most Awarded Cultural Attraction, presenting Te Pā Tū. Feast on song, drama, tradition, and divine seasonal kai (cuisine) within the forest Pā (village) blanketed by towering Tawa trees, blazing bonfires, and a forest-formed amphitheatre. Te Pā Tū shares Māori history, traditions, and cultural aspirations across 4-hours of celebration and feasting. These events change with each season of the Maramataka, the Māori lunar calendar.



## Your accommodation: Novotel Lakeside Rotorua

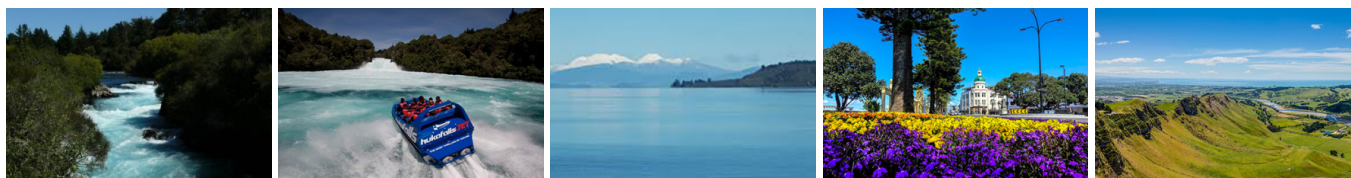
Novotel Lakeside Rotorua is a 4.5 star property located on the picturesque shores of Lake Rotorua and set in park surroundings. Just minutes from the city centre, cafes and restaurants plus the numerous tourist attractions including water activities on the lake, a golf course, museum, and thermal reserves.

Meals included: Breakfast



---

## Day 4



### Rotorua to Napier

This drive will take you through the thermal region just south of Rotorua. Home to a plethora of unique geothermal attractions including boiling mud pits, natural hot springs and steaming geysers, this area is a must do before you move on to Napier. Notable attractions are Wai-O-Tapu, Waimangu and Craters of the Moon. Continue on to Taupō and marvel at the lake, a giant crater formed following a volcanic eruption in the year 180 CE. As you approach the town, be sure to stop at Huka Falls to view the spectacular sight of hundreds of cubic metres of water spilling every second down the narrow 11 metre drop. For an extra thrill take a jet-boat ride at the base of the falls. Leaving Taupō, follow the road as it climbs the rugged Ahimanawa Range before descending back down the Pacific Coast to art deco coastal township of Napier.

### SUGGESTED ACTIVITY - Huka Falls Jet Boat Ride

The Huka Jet is 30 minutes of pure fun and exhilaration, skimming close to cliffs, sliding past trees, feeling the adrenalin of full 360 degree spins. The excitement continues right up to the base of the foaming Huka Falls, where you get a spectacular water level view to New Zealand's most visited natural attraction. Nothing compares to watching 220,000 litres per second tumbling over the cliff face towards you. The water from the mighty Huka Falls runs down the Waikato River through a series of Hydro Power Stations. You'll get a view of the Wairakei Geothermal Power Station in the comfort of a powerful Chevrolet V8 jet boat. This unique Geothermal Power Station uses underground geothermal activity to produce hot steamy water. The Waikato Rivers beautiful environment is varied and unique and is New Zealand's longest river flowing north from our largest lake, Lake Taupō. It is important you read and understand the risks associated with this activity. For more information please see [here](#).

---

## Your accommodation: Scenic Hotel Te Pania

Scenic Hotel Te Pania offers 4-star accommodation of a truly international standard. The hotel's slender, curved form echoes the shape of the bay. Enjoy sweeping views out over the water from a premium waterfront location on Marine Parade.

Meals included: Breakfast



---

## Day 5



### Explore Hawke's Bay

Discover Hawke's Bay, known in Māori as Te Matau-a-Māui or the fish hook of Māui. This is a region renowned for its Mediterranean charm, iconic Art Deco architecture, and award-winning wineries. Explore Mission Estate, the birthplace of New Zealand wine, or tour vineyards for a deeper dive into its winemaking legacy. Fans of the 1930s can enjoy a Vintage Car Tour, showcasing Napier's architectural gems. Outdoor enthusiasts can cycle over 200km of scenic trails or unwind at pristine beaches like Ocean and Waimarama. Indulge your taste buds with local delights, from honey and chocolate to fresh orchard produce. The Hawke's Bay is also home to an abundance of wildlife, head out on a Gannet Safari or educate yourself at the National Aquarium of New Zealand.

## SUGGESTED ACTIVITY - Art Deco Trust Guided Walk

Experience Napier's fascinating heritage created by the dramatic story of this city's rebirth in the vibrant 1930s. In February 1931, Napier was levelled by earthquake and fire but was rebuilt in the depths of the Great Depression in just two years. Nowhere else in the world can you see such a concentration of buildings in the styles of the 1930s: Art Deco, Spanish Mission, and Stripped Classical.

---

### Your accommodation: Scenic Hotel Te Pania

Scenic Hotel Te Pania offers 4-star accommodation of a truly international standard. The hotel's slender, curved form echoes the shape of the bay. Enjoy sweeping views out over the water from a premium waterfront location on Marine Parade.

Meals included: Breakfast



---

## Day 6



### Napier to Martinborough

As you leave the rolling countryside of the Hawke's Bay you'll be greeted with some of the country's richest dairy farmland in the Manawatu Gorge. Continue on through the Wairarapa region and stop in the Pukaha Mount Bruce Wildlife Centre, where you can see some of New Zealand native animals. Take another break in Masterson, and visit the interactive Woolshed Museum to learn about sheep farming in New Zealand. As you drive south, a visit to historic Greytown is a must-do. Take in the restored Victorian buildings and make time for a cup of tea at one of its quaint cafes. Leaving state highway 2 you will cross over the Ruamahanga River into Martinborough wine country your destination for the day.

---

### Martinborough Half Day Wine Tour with Martinborough Wine Tours

Visit wonderful vineyards such as Te Kairangi Wines, Tirohana Estate, Cabbage Tree Vineyard and Martinborough Vineyard on this half day tour of the premium wine region of Martinborough. Taste the wines, learn about the development of the region, its people and characters from knowledgeable guides.

---

### Your accommodation: The Martinborough Hotel

At the Martinborough Hotel, indulge in the elegant surroundings of this 1882 building. There are nine Verandah Rooms, at the top of the grand flight of stairs and seven spacious Garden Rooms finished in a restful simple country style.

Meals included: Breakfast



---

## Day 7



### Martinborough to Wellington City

Cross the Remutaka Ranges as you make your way to New Zealand's capital city, Wellington. Often compared to Melbourne, Wellington is vibrant cultural hub. Home to the nation's centre of government. Legislation happens in the aptly named 'Beehive', an executive wing attached to the Houses of Parliament. At 1km squared, the city centre (easily traversed on foot) has an international feel and is peppered with underground art shows, alleyway cafes and New York style delis. Take in the boardwalk view as you stroll to Te Papa Museum or indulge your cinematic side exploring Weta Workshop, the Oscar Award winning design studio for Lord Of The Rings. For a taste of vintage fashion, spend some time (and dollars!) on Cuba Street browsing the boutiques. Work off last night's dinner with a cycling tour of Oriental Bay and undo your good work with a Hokey Pokey ice-cream in the sun. For those heading further down, the capital is where you board the ferry crossing the Cook Strait to the South Island.

---

Wellington, known in Māori as Te Upoko o te Ika a Maui ("The Head of the Fish of Maui") or Te Whanganui a Tara ("The Great Harbour of Tara"), is New Zealand's vibrant capital. Often called a "mini-Melbourne," this cosmopolitan city blends art, culture, food, and fashion with quirky laneway bars, hip eateries, and underground art shows. Stroll the waterfront to Te Papa, New Zealand's national museum, or ride the historic cable car from Lambton Quay for stunning city views. Explore Cuba Street's unique boutiques and visit the iconic Beehive; at Parliament. Fans of The Lord of the Rings can tour Weta Workshop, the Oscar-winning design studio behind Middle-earth. Just an hour away, Martinborough offers a culinary escape with top-notch food and wine. Nature lovers can't miss Zealandia, the world's first fully fenced eco-sanctuary. End your day sampling Wellington's renowned dining scene—search 'Metro Eats' for the city's best spots.

Wētā Workshop has been making cool stuff for film and TV since 1987. The crew has brought to life beloved characters and epic special effects for iconic blockbusters like The Lord of the Rings, The Hobbit, Avatar and Black Panther: Wakanda Forever.

Step into Wētā Workshop Experiences and explore a world of creativity, physical effects and movie magic on a guided tour through our creative home base. You'll learn about the making of props, creatures and costumes created for your favourite films. Get hands-on with unique pieces from many departments, catch the artists at work and discover how Weta have grown into the award-winning workshop you see today.

The Bolton Hotel offers contemporary apartment-style accommodation in the heart of Wellington. Just steps from the Parliament buildings and central business district, Bolton Hotel is conveniently close to the best of the city's shops, cafes and restaurants and is within walking distance of Wellington's vibrant waterfront.



Explore more of Wellington before dropping your rental car at the airport depot and continuing your onward journey.

Bid farewell to Aotearoa-New Zealand, taking with you unforgettable memories of its breathtaking landscapes and incredible adventures. In Maori, it is said mā te wā, which is not goodbye, it is see you soon!

## Tour details

Departures:	Daily
Tour type:	North Island Self Drive
Starts:	Auckland
Finishes:	Wellington
Tour length:	8
Accommodation:	Hotel 4 star
Car/transport type:	

---

## Included activities

Includes	Private airport transfers
----------	---------------------------

---

## Accommodation summary

Day 1	Legacy Airedale Hotel
Day 2	Novotel Lakeside Rotorua
Day 3	Novotel Lakeside Rotorua
Day 4	Scenic Hotel Te Pania
Day 5	Scenic Hotel Te Pania
Day 6	The Martinborough Hotel
Day 7	Bolton Hotel Wellington