



24 Day Grand Explorer

This explorer tour takes in major attractions of both the North and South Island, while also guiding you to some favourite holiday destinations of the locals, like the Coromandel Peninsula. Along the way you'll enjoy two night stays to ensure you really experience New Zealand and have time to enjoy the many activities on offer. We've also included four very different scenic cruises, beginning with a cruise in the sub-tropical Bay of Islands and finishing with a nature cruise in the pristine Milford Sound. At the right time of year you might spot dolphins, penguins, seals and royal albatross.



Starts in: Auckland
Finishes in: Christchurch
Length: 24days / 23nights
Accommodation: Hotel 4 star
Can be customised: Yes

This itinerary can be customised to suit you perfectly. We can add more days, remove days, change accommodations, mix it up, add activities to suit your interests or simply design and create something from scratch. Call us today to get your custom New Zealand itinerary underway.



Inclusions:

Includes: Late model rental cars

Includes: Unlimited kms

Included activity: Private Transfer Auckland Airport to your Auckland Accommodation with Tourcorp

Included activity: The Visitor Promise - Cultural Learning Course

Included activity: Akaroa Harbour Nature Cruise with Black Cat

Included activity: Shotover Canyon Jet Boat Ride

Included activity: TranzAlpine Scenic Train: Greymouth to Christchurch

Included activity: Private Transfer from Christchurch Accommodation to Christchurch Airport with Christchurch Touring Company
Included activity: Te Pā Tū Evening Māori Cultural Experience - Dinner Included

Includes: Fully inclusive rental car insurance (excess may apply)

Includes: Afterhours emergency support while touring

Included activity: Electronic Travel Guide and In-Country Support App

Included activity: Interislander Ferry Wellington to Picton with Premium Plus Lounge

Included activity: Castle to Cruise Tour and Penguin Experience with Monarch

Included activity: Milford Sound Cruise and Coach Tour from Queenstown with RealNZ - Lunch Included

Included activity: Shared Transfer from Christchurch Train Station to Christchurch CBD Accommodation with Christchurch Touring Company

Included activity: Hole in the Rock Cruise with Fullers GreatSights

: 23 breakfasts, 1 lunch, 1 dinner



Day 1



Private Transfer Auckland Airport to your Auckland Accommodation with Tourcorp

You will be met at the Auckland airport by the driver and transferred to your Auckland accommodation.

Welcome to Auckland

Welcome to Auckland, known in Māori as Tāmaki Makaurau. Auckland is New Zealand's vibrant "City of Sails," and the country's largest metropolitan area. Nestled between the Pacific Ocean and the Tasman Sea. Surrounded by native bush, lush rainforests, and pristine beaches, Auckland is a haven for both adventurers and urban explorers. Wander through world-class museums and galleries in the city centre or enjoy a peaceful retreat at the Auckland Gardens, where stunning landscapes showcase New Zealand's diverse flora. Stroll along the lively waterfront to savour fresh seafood and international cuisine at Viaduct restaurants. For an unforgettable perspective, ascend the iconic SkyTower, New Zealand's tallest structure, and take in panoramic views of the city and its picturesque islands.

SUGGESTED ACTIVITY - Harbour Sailing Cruise with Explore

Enjoy the City of Sails from the water on a relaxed harbour sailing yacht. This cruise offers a uniquely local experience experiencing the harbour under sail with a small vessel with an intimate and engaging atmosphere. View the stunning city sights while sailing on the inner Waitemata Harbour. Sail where the wind takes us while enjoying Auckland's city highlights; including sailing under the Harbour Bridge and other well-known landmarks along the harbour's edge. The crew's local knowledge will give you the best harbour sailing experience Auckland has to offer. Become the crew and help participate with the sailing experience take the helm while you carve through the water, or if you prefer just sit back and relax above deck.

SUGGESTED ACTIVITY - All Blacks Experience

See what it takes to make, shape and be an All Black. Experience first-hand the excitement and emotion of game day. Discover the stories behind some of world rugby's most famous players, moments, and matches.

This guided experience introduces you to the game of rugby including state-of-the-art displays combining sound, images, interactive technology, and hands-on activities. Discover New Zealand's deep passion for our national sport, experience the full force of the All Blacks haka, and tackle interactive zones where you can try out your kicking, catching, line-out, and accuracy skills against legendary All Blacks.

SUGGESTED ACTIVITY - Wētā Workshop Unleashed

A jaw-dropping, senses-shattering, awe-inspiring adventure into the heart of movie magic! Get hands-on and immerse yourself in an extraordinary world of practical effects, props and larger-than-life sets. On this award-winning tour, you can explore three movie projects imagined by the Weta crew and uncover how they bring big screen concepts to life. Discover a mind-blowing world of robots, monsters, dinosaurs and more - step right into the action to see, play and experience movie-making up close.

Your accommodation: SkyCity Hotel Auckland

This modern and spacious hotel allows you to relax in style while enjoying the world-class casino, more than 20 restaurants, cafes and bars, a theatre, free live entertainment on selected nights and the iconic Sky Tower - all right on your doorstep!



Day 2



Collect Rental Car

This tour's from price includes an intermediate-sized vehicle, setting you up for comfortable travels. Yet, we understand every adventure is unique! Feel free to select the perfect wheels from our incredible collection of rental cars, spanning from economy hatchbacks to premium SUVs.

Car Instructions

On collection of your rental car, you will be required to sign a rental agreement and provide a credit card for a security bond authorisation. Remember, the bond is only authorised, not charged, at this stage. While your rental rate may include coverage for mechanical breakdowns (please verify your specific car inclusions), you may also have the option to purchase roadside assistance for non-mechanical issues. All drivers must present a physical credit card, valid driving license and passport to be added to the agreement, with potential additional charges for extra drivers. Debit cards may be used on select vehicles. If you are presenting an international drivers license, this must be accompanied by the original domestic license. Drivers under 21 are not permitted, and those aged 21-24 may face a surcharge, both payable directly to the rental company. For detailed information, please refer to your rental car inclusions. See this important information if you are traveling between the North and South Islands on the ferry

Auckland to Hokianga via Waipoua Forest

The drive north to Waipoua Forest and the Kauri Coast takes you along the remote West Coast of the North Island and around one of the world's largest natural harbours, the Kaipara Harbour. The region was worked by immigrant Dalmatians who toiled to make a living from the gum fields. A visit to the Kauri Museum at Matakoho tells the story of their hardships and pioneering spirit and of the remarkable impact this tree had on the region and the wider world and is must do. You'll have plenty of opportunity to stop along this spectacular route, so be sure to leave time for sightseeing.

SUGGESTED ACTIVITY - Twilight Waipoua Encounter

Experience the Waipoua Forest at night on this spectacular 4 hour tour. Learn about the rich birdlife and fauna that inhabit the forest, including the carnivorous kauri snail. You'll also get to experience the deep spiritual respect the Maori people have for this place. Your Maori guide will brief you on the protocols for your visit and you once formal greetings have been made you will be allowed to meet the giant Tane Mahuta, or Lord of the Forest - the oldest Kauri tree in the world.

Your accommodation: The Sands Hotel & Resort Hokianga

Just 3.5 hours from Auckland, get away from the hustle and bustle of the city life at the Sands Hotel, a four star accommodation with world-wide service, overlooking the Hokianga Harbour. Enjoy a relaxing and comfortable stay by the quiet water's edge of the harbour and explore the beautiful surrounding nature with the Waipoua Forest and its famous ancient Kauri tree in the area.

Meals included: Breakfast



Day 3



Hokianga to Paihia, Bay of Islands

Heading east from the Hokianga, a detour to Rawene is recommended (signposted) to view the historic wooden buildings on the harbour and stop for a break at the Boatshed Cafe, sitting on the water with fantastic views. Crossing from the West Coast to the east you soon arrive at the subtropical Bay of Islands. A slight detour north will take you to Kerikeri, famous for its crafts and fruit orchards, it's also the largest township in the region. Kerikeri is home to New Zealand's oldest standing European buildings, the Stone Store and Kemp House, both are open to visitors. Continue on to Paihia, an excellent base to explore the Bay of Islands. Nearby is a wealth of early New Zealand history, learn about the signing of the Treaty at Waitangi and Maori culture. Across the harbour is the cute village of Russell, with many historic buildings, a lovely place to explore. Paihia is also the launching point for many marine encounters, see dolphins, kayak or cruise the beautiful Bay of Islands, there are many ways to experience this paradise.

Hole in the Rock Cruise with Fullers GreatSights

Board your cruise and take in the stunning views as you glide out through the islands and along the Rakaumangamanga Peninsula to Cape Brett, where a historic lighthouse keeps watch over and Piercy Island/Motukōkako, or as it is popularly known as the Hole in the Rock. According to Māori legend, local warriors used to paddle through the Hole in the Rock in their canoes before departing for battle. Drops of water from the cave roof above were a good omen. If conditions permit, your skipper will expertly guide the ship through the narrow space. Keep an eye out for common and bottlenose dolphins, whales, and other marine life during your cruise, and have your camera ready as you get up close to the action. Stop off at Otehei Bay on Urupukapuka Island where you have time to relax, take a walk, have a swim, or enjoy a bite to eat and drink from the on-site fully licensed cafe. The purpose-built catamaran is licensed by DOC (the Department of Conservation) for dolphin viewing and the crew has years of experience locating dolphins in these waters.

Explore Bay of Islands

Commonly known as the 'winterless north', New Zealand's Bay of Islands is made up of over 140 subtropical atolls. Renowned for its untouched beaches, abundant marine life, and idyllic climate, this tropical paradise ticks all the boxes. Spend some time on a remote stretch of beach, or see the dolphins on an ocean safari. If diving is your thing, take the morning to descend the Rainbow Warrior - The Greenpeace flagship sunk by French saboteurs in 1985. Wander around Russell, a whaling port founded in 1843. Learn about our culture in historic Waitangi, the site where The Treaty of Waitangi was signed in 1840 between the Māori and Europeans. Alternatively, you may like to take a day tour to Cape Reinga, the very top of the North Island.

Your accommodation: Copthorne Hotel and Resort Bay of Islands, Paihia

Copthorne Hotel & Resort Bay of Islands is located within the Waitangi Treaty grounds, surrounded by native bush and the beautiful Bay of Islands Harbour.

Meals included: Breakfast



Day 4



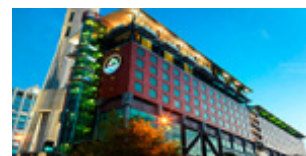
Paihia, Bay of Islands to Auckland

Today leave the Bay of Islands behind as you head south towards Auckland, City of Sails. You'll go through Kawakawa, famous for its unique Hundertwasser toilets, before passing the port-side town of Whangarei. Continue on through Warkworth and take a side trip to Matakana, renowned for its beaches and boutique vineyards. As you near the outskirts of Auckland, stop for a breather in Puhoi, New Zealand's only Bohemian settlement, before passing through the North Shore and into the heart of Auckland City.

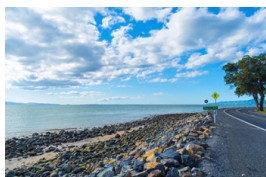
Your accommodation: SkyCity Hotel Auckland

This modern and spacious hotel allows you to relax in style while enjoying the world-class casino, more than 20 restaurants, cafes and bars, a theatre, free live entertainment on selected nights and the iconic Sky Tower - all right on your doorstep!

Meals included: Breakfast



Day 5



Auckland to Pauanui

Leaving Auckland you will travel through rolling green Waikato countryside and across the Hauraki Plains. The drive will take you near the Firth of Thames, a haven for wildlife, in particular, the shorebirds at Miranda. Arriving in the historic gold town of Thames you then cross the Southern Coromandel Ranges and onto the scenic east coast of the peninsula, littered with white sandy beaches. The destination of Pauanui meaning "Big Paua" in Māori, lies at the mouth of the Tairua River on its south bank, directly opposite the larger town of Tairua.

Your accommodation: Grand Mercure Puka Park Resort

Puka Park Resort is situated on the eastern side of the Coromandel Peninsula. Nestled amongst 25 acres of New Zealand's most beautiful native bush this prestigious hideaway offers luxury and seclusion at its best.

Meals included: Breakfast



Day 6



Tairua

Tairua is a charming seaside town and fishing village nestled around a natural harbour. Its most prominent feature is Paku Hill—an extinct volcanic cone that rises at the harbour entrance. From the lookout at the summit, you'll enjoy sweeping views of the township and the Pacific Ocean. With its white sandy beaches, inviting cafés, and relaxed coastal atmosphere, Tairua is an ideal spot to unwind. It also serves as a departure point for dive trips to the Alderman Islands.

Pauanui to Hot Water Beach - Return Journey

North of Pauanui is the famous Hot Water Beach. Hot Water Beach derives its name from the geothermally heated water that seeps through the sands. At low tide, you can dig a hole and create your mineral hot pool. The beach itself is golden sand and is an ideal place to spend an afternoon at the seaside. A few cafes and art stores are also here, in particular, Moko Artspace which has a great range of local and Polynesian arts and crafts for sale.

SUGGESTED ACTIVITY - Nature & Coast Tour with Kiwi Dundee - Lunch Included

Experience the best of the Coromandel Peninsula on the Nature and Coast Tour, showcasing its scenic highlights and hidden local treasures. Stroll through lush forest trails to a historic gold cave sparkling with glowworms, and uncover the region's rich history, unique flora, and diverse fauna. Discover breathtaking coastal landscapes, including white sand beaches, towering beach caves, dramatic cliffs, and ancient Māori pā sites. The tour also includes a visit to the iconic Hot Water Beach and an exclusive look at fascinating local finds, such as gold specimens, petrified wood, and kauri gum.

Your accommodation: Grand Mercure Puka Park Resort

Puka Park Resort is situated on the eastern side of the Coromandel Peninsula. Nestled amongst 25 acres of New Zealand's most beautiful native bush this prestigious hideaway offers luxury and seclusion at its best.

Meals included: Breakfast



Day 7



Pauanui to Rotorua via Tauranga

Leaving Pauanui, head south to New Zealand's surfing mecca. In addition to lazing on the beach or surfing, Whangamata offers big game fishing, walking and mountain biking in native and exotic forests. Continuing on to Tauranga you will arrive into the harbourside city in the Bay of Plenty region. It hosts historic buildings like the Elms Mission Station, an 1847 Georgian-style home. A bridge over the harbour connects Tauranga to Mount Maunganui, a beach town with hot saltwater pools and an extinct namesake volcano with winding walking paths. Finally, you will arrive into the City of Rotorua. The region's geothermal activity becomes evident as you see steam rising from the roadside and surrounding hills. Considered the cultural centre for the Maori people, Rotorua is the ideal place to gain an insight into the history and culture. Visit the local museum located in the government gardens or the nearby Ohinemutu Village, the original site of the first Maori settlers in the area or enjoy a traditional Maori "Hangi" meal and a cultural performance. Of course, Rotorua is also a great place to enjoy many other activities including, fishing, 4WD trips, relaxing spa treatments, mountain biking, walking and hiking plus helicopter and float plane trips.

Your accommodation: Millennium Hotel Rotorua

Millennium Hotel is Rotorua's largest 4-star deluxe hotel. Perfectly situated in the heart of the city overlooking Lake Rotorua. Five levels of accommodation offer guests a wide variety of scenic views.

Meals included: Breakfast



Day 8



Explore Rotorua

Peppered with natural hot springs, boiling mud pools and steaming geysers, Rotorua sits within one of the world's most active volcanic regions. Geothermal landmarks aside, this city of sulphur has a rich indigenous history. Home to several prominent Māori tribes, a visit to one of the Māori experiences should be high on your agenda, learn about the special meaning of pounamu-Greenstone with Mountain Jade, explore the geysers and arts of Te Puia or immerse in an evening with Te Pā Tū. An excursion to one of the area's wellness spas is also a must! Try the Polynesian Spa for an invigorating soak in its natural mineral hot springs, Wai Ariki offers an indulging and unwinding restorative journey or pay a quick visit to Secret Spot for a soak and a delicious smash burger! If it is a thrill you are looking for, spike your adrenaline at Rotorua Canopy Tours, soaring above the ancient native forest below. Alternatively, head up the Skyline Rotorua Gondola for soaring lake views, and ride the luge at night for an extra thrill. Make the most of your time in Rotorua with an excursion through the Wai-O-Tapu Thermal Wonderland, one of the area's most colourful volcanic attractions. Whatever you are after, Rotorua is almost certain to have it!

SUGGESTED ACTIVITY - National Kiwi Hatchery Experience

The National Kiwi Hatchery Experience is a special opportunity to gain insight into and view this highly regarded conservation centre. Developed with the visitor experience in mind, the hatchery boasts special viewing opportunities and is hosted by kiwi expert guides who ensure guests leave fully informed and all questions answered. Learn all about New Zealand's intriguing national icon and the efforts of the kiwi husbandry team, see and discover what it takes to hatch and rare chicks, and if you're lucky see baby chicks in person!

SUGGESTED ACTIVITY - Original Ziplining Experience with Rotorua Canopy Tours

Embark on a three-hour adventure through the native New Zealand forest. Journey through the beautiful forest canopy via an incredible network of trails, tree platforms, Ziplines and swing bridges. See breathtaking views of the woodland valleys and hills as you fly through tight openings in the trees. In between the thrill of the ziplines and suspended tree bridges, your guides will share their passion and knowledge for the forest and the conservation challenges to preserve it. It is important you read and understand the risks associated with this activity. For more information see [here](#).

Te Pā Tū Evening Māori Cultural Experience - Dinner Included

New Zealand's Most Awarded Cultural Attraction, presenting Te Pā Tū. Feast on song, drama, tradition, and divine seasonal kai (cuisine) within the forest Pā (village) blanketed by towering Tawa trees, blazing bonfires, and a forest-formed amphitheatre. Te Pā Tū shares Māori history, traditions, and cultural aspirations across 4-hours of celebration and feasting. These events change with each season of the Maramataka, the Māori lunar calendar.

SUGGESTED ACTIVITY - Wai-O-Tapu Thermal Wonderland

Wai-O-Tapu Thermal Wonderland is a spectacular showcase of New Zealand's colourful and unique geothermal elements sculpted by thousands of years of volcanic activity. You will be introduced to a diversely different natural landscape, extending over 18-sq. km. Enjoy viewing the volcanic features as you walk at your own pace along well-defined tracks. Relax in the first-class Visitor Centre, home to the Gift Shop and Café facilities. Visit the Mud Pool, the largest in New Zealand, it was originally the site of a large mud volcano which was destroyed through erosion in the 1920s. See the history and beauty of the Lady Knox Geyser at 10:15 am every day where a daily eruption happens of up to 20 metres.

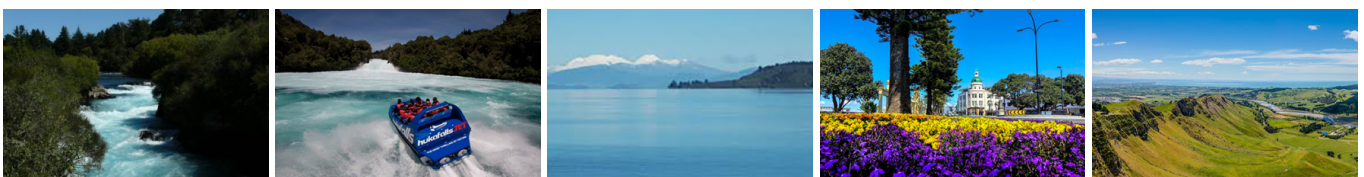
Your accommodation: Millennium Hotel Rotorua

Millennium Hotel is Rotorua's largest 4-star deluxe hotel. Perfectly situated in the heart of the city overlooking Lake Rotorua. Five levels of accommodation offer guests a wide variety of scenic views.

Meals included: Breakfast, Dinner



Day 9



Rotorua to Napier

This drive will take you through the thermal region just south of Rotorua. Home to a plethora of unique geothermal attractions including boiling mud pits, natural hot springs and steaming geysers, this area is a must do before you move on to Napier. Notable attractions are Wai-O-Tapu, Waimangu and Craters of the Moon. Continue on to Taupō and marvel at the lake, a giant crater formed following a volcanic eruption in the year 180 CE. As you approach the town, be sure to stop at Huka Falls to view the spectacular sight of hundreds of cubic metres of water spilling every second down the narrow 11 metre drop. For an extra thrill take a jet-boat ride at the base of the falls. Leaving Taupō, follow the road as it climbs the rugged Ahimanawa Range before descending back down the Pacific Coast to art deco coastal township of Napier.

SUGGESTED ACTIVITY - General Admission to National Aquarium of New Zealand

The National Aquarium of New Zealand stretches along Napier's Marine Parade. It's home to a wide range of saltwater, freshwater, and land animal exhibits from New Zealand and around the world. Experience, stingrays, living coral, a huge range of fish species, and native wildlife. Visit Penguin Cove and watch the little penguins swim, feed and play. Spot New Zealand native wildlife including the Kiwi and Tuatara.

SUGGESTED ACTIVITY - Little Penguin Close Encounter with National Aquarium of New Zealand

The National Aquarium of New Zealand is one of the only places in New Zealand where you can have a Close Encounter with these entertaining little birds. Little Penguins are only found in New Zealand and South Australia. As part of your encounter, you'll also experience what goes on behind the scenes, discovering all about the day-to-day care of these character-filled little birds and taking part in hand-feeding them. Learn about their rescue and rehabilitation and also what you can do to help preserve this special species and their environment.

Your accommodation: Art Deco Masonic Hotel

The Art Deco Masonic Hotel occupies a significant historic building on Napier's waterfront and has been richly refurbished in keeping with the Art Deco architecture. With its central location and decadent décor, this is the best place to experience what Napier is famous for.

Meals included: Breakfast



Day 10



Explore Hawke's Bay

Discover Hawke's Bay, known in Māori as Te Matau-a-Māui or the fish hook of Māui. This is a region renowned for its Mediterranean charm, iconic Art Deco architecture, and award-winning wineries. Explore Mission Estate, the birthplace of New Zealand wine, or tour vineyards for a deeper dive into its winemaking legacy. Fans of the 1930s can enjoy a Vintage Car Tour, showcasing Napier's architectural gems. Outdoor enthusiasts can cycle over 200km of scenic trails or unwind at pristine beaches like Ocean and Waimarama. Indulge your taste buds with local delights, from honey and chocolate to fresh orchard produce. The Hawke's Bay is also home to an abundance of wildlife, head out on a Gannet Safari or educate yourself at the National Aquarium of New Zealand.

Napier City

Napier, a coastal gem, is famed for its 1930s Art Deco architecture, the annual Art Deco Weekend, stately Norfolk pines, nearby wineries, and fresh local produce. With a Mediterranean climate and over 2,200 hours of sunshine annually, it boasts a thriving café culture set against stunning heritage buildings. The city center has around 30 cafés within walking distance, while Ahuriri, just beyond Bluff Hill, offers more upscale dining. Marine Parade overlooks the Pacific Ocean and Cape Kidnappers, home to the world's largest mainland gannet colony. Visitors can explore Ocean Spa, the Hawke's Bay Museum, and the National Aquarium of New Zealand. Bluff Hill, a key landmark, provides sweeping views of Napier, Perfume Point, Westshore Beach, and the busy Port of Napier, which exports timber, fruit, and meat worldwide.

In 1931, Napier was devastated by a 7.8-magnitude earthquake, New Zealand's worst natural disaster. Fires ravaged the city. Rebuilding efforts transformed Napier and Hastings into modern cities, while the uplifted Ahuriri Lagoon created much-needed land for expansion.

SUGGESTED ACTIVITY - Gannet Safaris

Drive along the scenic coast from Napier to Te Awanga and join Gannet Safaris Overland and the world's largest, most accessible gannet colony at Cape Kidnappers. Gannet Safaris has been guiding visitors over Cape Kidnappers for over 35 years and their safaris are the only way to be driven right to within a few feet of these remarkable birds. You will travel in comfort in air-conditioned 4 x 4 wheeled vehicles, through Cape Kidnappers Station - traversing riverbeds, broad rolling pastures, stands of native bush, steep gullies and breath-taking inclines. There is a stop on the way at a spectacular cliff top with panoramic views of Hawke Bay right across to Mahia peninsular. The 36km, three hour trip includes a commentary by your tour guide/driver on the farming operation on Cape Kidnappers Station and an introduction to the gannets. On arrival at the gannets you can stretch your legs and take in the scenery from your position at the brink of the cliff's edge, 100 metres above the ocean!

SUGGESTED ACTIVITY - Hawkes Bay Half Day Wine Tour with Grape Escape

This wine tasting tour is designed for casual imbibers and wine aficionados. Meet like-minded people and share an appreciation of Hawke's Bay's fantastic wines. Taste great wines made with passion and learn of the area's unique growing conditions. Take home outstanding wines and wonderful memories. Join a fun filled wine tasting afternoon in the sun driving through absolutely stunning scenery. Meet like-minded people and share an appreciation of this region's fantastic wine. Visit four to five wineries and enjoy a cheese platter on the grounds of the Ngatarawa Vineyard beside the lily pond.

Your accommodation: Art Deco Masonic Hotel

The Art Deco Masonic Hotel occupies a significant historic building on Napier's waterfront and has been richly refurbished in keeping with the Art Deco architecture. With its central location and decadent décor, this is the best place to experience what Napier is famous for.

Meals included: Breakfast



Day 11



Napier to Wellington City via Masterton

The rolling countryside of the Hawke's Bay leads you into some of New Zealand's richest farmland, located around the Manawatu region. Passing along the Manawatu Gorge the Wairarapa welcomes you. Masterton is home to the golden shears sheep shearing competition while just further south Greytown boasts the largest concentration of historic wooden buildings in the country.

Nearby Martinborough is home to dozens of boutique wineries. The route takes you over the Remutaka Range and along the magnificent natural harbour that the capital city of Wellington sits upon.

Explore Wellington museums

Discover Wellington's vibrant museum scene, where history, art, and culture collide. Te Papa Tongarewa, New Zealand's national museum, offers immersive exhibits exploring the nation's art, culture, and natural history. The Wellington Museum shares the fascinating stories of the Wellington region. For art lovers, City Gallery Wellington showcases cutting-edge contemporary works from local and international artists. Perfect for all ages, Wellington's museums blend education and inspiration, making them a must-visit in the capital.

SUGGESTED ACTIVITY - Zealandia By Night Wildlife Sanctuary Tour

Taking a night tour of Zealandia wildlife eco-sanctuary is an unforgettable experience and one that comes highly recommended. A conservation success and safe haven for some of New Zealand's rarest native animals, Zealandia is home to many remarkable species of birds, reptiles and insects living wild within a beautiful 225 hectare (one square mile) valley, just 10 minutes from the central city.

Your accommodation: Copthorne Hotel Wellington Oriental Bay

Located on Wellington's premier Oriental Parade, overlooking the stunning Wellington Harbour, Copthorne Hotel Wellington Oriental Bay is the perfect base to explore the city. Just 10 minutes away are the city's shopping and entertainment centre. Te Papa Museum, Live Theatre in Courtney Place, and many of the city's finest restaurants and bars are also close by.

Meals included: Breakfast



Day 12



Interislander Ferry Wellington to Picton with Premium Plus Lounge

The 92 km ferry journey between Wellington and Picton, taking around 3 hours, is hailed as one of the world's most beautiful ferry rides. Departing Wellington Harbour, you'll pass landmarks like Pencarrow Head with New Zealand's oldest lighthouse, Red Rocks' seal colony, and Oterangi Bay, famous for its record wind speed. From the Cook Strait, marvel at views of the Kaikōura Ranges and spot dolphins and seabirds. An hour of the trip winds through the stunning Marlborough Sounds, featuring bush-clad mountains, tranquil bays, and crystal-clear waters—a photographer's dream. The journey concludes in the charming town of Picton at the end of Queen Charlotte Sound. When not soaking up the views from the deck, relax in the Premium Plus lounge, offering complimentary drinks, snacks, internet, and luxurious seating for the most comfortable way to cross the Cook Strait.

Collect Rental Car

This tour's from price includes an intermediate-sized vehicle, setting you up for comfortable travels. Yet, we understand every adventure is unique! Feel free to select the perfect wheels from our incredible collection of rental cars, spanning from economy hatchbacks to premium SUVs.

Picton to Nelson via Queen Charlotte Drive

The Queen Charlotte Drive follows the Marlborough Sounds coastline between Picton and Havelock. Magnificent views of the Sounds can be had from many vantage points so allow plenty of time to enjoy the scenery. If you can spare the time take the narrow windy road to Portage along Mahau Sound and Kenepuru Sound with their bush clad hillsides and secluded sandy coves.

The small port town of Havelock has a great variety of cafes and restaurants to choose from so plan your journey to arrive in time for lunch. The drive also crosses the Pelorus River and just at this junction is the famous and historic Pelorus Bridge. From here there are a number of forest walks with the most popular being the Pelorus Bridge 30 minute Loop through Beech, Rimu and Totara forest to the swing-bridge.

Departing Pelorus Bridge following the windy roads with view looking over Cable Bay and the Bryant Range until you arrive onto Tasman Bay and the city of Nelson.

Your accommodation: Tides Hotel (was Trailways Hotel)

Centrally located within a few minutes walk of Nelson's central shopping precinct, theatres, restaurants and cafés, the information centre, and close to the scenic waterfront. Located right on the river, many of the rooms open onto the river view. Also overlooking the river is The Tides Restaurant and Bar.

Meals included: Breakfast



Day 13



Explore the Nelson and Abel Tasman region

Nelson is a great city to explore on foot. Visit the historic areas, and the famous Cathedral, or relax and enjoy the atmosphere at one of the many cafes on Trafalgar Street. Nelson is also noted for its many artists, and galleries displaying their work can be enjoyed by following one of the Art trails listed locally. Around 45 minutes drive away is Abel Tasman National Park. The region offers countless opportunities to explore for visitors of every age and capability, from enjoying the golden sand beaches and clear warm waters to guided kayaking trips viewing seals and dolphins, to exploring some of New Zealand's finest walking tracks.

Abel Tasman National Park

Experience the golden beauty of Abel Tasman National Park, a coastal paradise renowned for its spectacular hiking track, pristine golden beaches, secluded inlets, and private lagoons. With its mild climate and stunning natural environment, it's a cherished destination for New Zealanders nationwide. Why not enjoy a scenic cruise through the Sounds or take a kayaking tour around its many sheltered bays? Relax to the melodious birdsong and get up close to some of the park's many animal residents, including native bats, geckos, birds, marine mammals, fur seals, and dolphins.

SUGGESTED ACTIVITY - Seals, Beach Cruise and Walk

Experience the best of Abel Tasman on this combined beach cruise and walk tour. Cruise into the Tonga Island Marine Reserve and pause to watch the antics of the Resident Fur Seal Colony. After landing at the historic Tonga Quarry Beach, take a two hour, fifteen minute walk over forested land and around the spectacular Bark Bay Estuary, renowned for its cascading waterfalls. Rejoin the cruise at the sheltered golden cove on Medlands Beach.

Your accommodation: Tides Hotel (was Trailways Hotel)

Centrally located within a few minutes walk of Nelson's central shopping precinct, theatres, restaurants and cafés, the information centre, and close to the scenic waterfront. Located right on the river, many of the rooms open onto the river view. Also overlooking the river is The Tides Restaurant and Bar.

Meals included: Breakfast



Day 14



Nelson to Christchurch (via Nelson Lakes National Park)

Leaving Nelson you will pass through the suburb of Richmond. Moving on you will travel through the Nelson Lakes and Kahurangi National Park regions. Trees, rivers and valleys accompany you now as you head towards the town of Murchison. Murchison is a quiet place and a great lunch stop. Underneath its sleepy farming facade is an adventurers paradise with white water rafting, jet boating, gold panning, kayaking, 4WD trips and excellent trout fishing.

From Murchison, you will head south towards Maruia Springs, which has been attracting travellers for years and the natural hot springs are now located within an authentic Japanese themed resort, a great place to stop for a soak if time allows. Head inland over the Lewis Pass where the landscape changes to a sub-alpine zone with large forests of red and silver beech. Near the summit a short walking track, the Tarn Nature Walk, is an ideal place to break your journey.

The drive south to Christchurch takes you through some fine rolling farmland and North Canterbury's major wine region, the Waipara Valley.

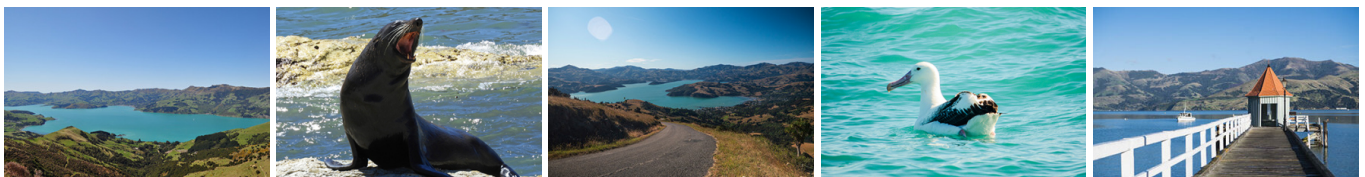
Your accommodation: Sudima Christchurch City

Sudima Christchurch City is a brand new 5-star boutique hotel, ideally located on Victoria Street. Amidst an array of cafes, restaurants and bars, stay only a martini olive pips' throw from beautiful Hagley Park and Christchurch's CBD. Experience the garden city in comfort and style.

Meals included: Breakfast



Day 15



Christchurch to Akaroa

The Banks Peninsula offers a great contrast to the South Island's largest city. Just around a 1 1/2 hours drive from the city centre are rolling green hills, streams, golden sand beaches and small settlements that offer a unique insight into New Zealand's history and development. Just on the other side of the Port Hills is Lyttelton, a busy port town that was crucial to the development of Christchurch and the Canterbury Plains. Following the road around the beautiful natural harbour the names, such as Magazine Bay, Battery Point, Corsair Point and Governors Bay, remind of the importance the navy placed on this harbour.

The Banks Peninsula itself is actually the remains of a long extinct volcano, the rim of which collapsed some time ago allowing the sea to flood into and create what is now the Akaroa Harbour. In 1840 French colonists settled in Akaroa in a bid to stake a claim for the South Island.

Unbeknown the British had already declared sovereignty and a long drawn out dispute ensued with the British eventually being given government. However the French stayed and made this stunning part of the South Pacific their home and still to this day the town boasts French street names and every year a French Festival is held.

The Harbour itself is teeming with wildlife and a nature cruise is a must do activity. One of the world's smallest and rarest dolphins, hectors dolphin, are often seen and cruises also offer excursions with the chance to swim amongst them.

Akaroa Harbour Nature Cruise with Black Cat

Experience majestic scenery and stunning wildlife daily on a Black Cat Akaroa Harbour Nature Cruise. You'll see the rare, native dolphin – the Hector's or New Zealand Dolphin. There's also the chance to spot the world's smallest penguin, the White Flipped Little Blue Penguin, Fur Seals and other sea birds.

Other cruise highlights are some majestic volcanic cliffs (including the impressive Cathedral Cave) and signs of Akaroa's fascinating past including early Maori, French and British settlements.

Your accommodation: Les Troupes Apartments

Make yourself at home at Les Troupes Apartments, offering guests private, fully self-contained accommodation in the heart of Akaroa. Les Troupes Akaroa accommodation is situated an easy 50 metres walk to the many cafes, restaurants and quaint shops for which Akaroa is famous.

Meals included: Breakfast



Day 16



Akaroa to Dunedin

Crossing the vast Canterbury Plains as you head South, State Highway 1 crosses many braided rivers that start their life as glacial melt water high in the Southern Alps. New Zealand's longest bridge at Rakaia crosses such an example. The towns of Timaru followed by Oamaru are worth a short detour to the town centre.

The town of Oamaru is most famous for its buildings constructed with the unique locally quarried white stone. Explore the old quarter or if you don't mind a late arrival into Dunedin then stay around to see the blue penguins come ashore at dusk.

Just a little further south and you arrive at Moeraki and its famous Moeraki Boulders. The last stretch of road follows the coastline before crossing the hills and descending into the city of Dunedin.

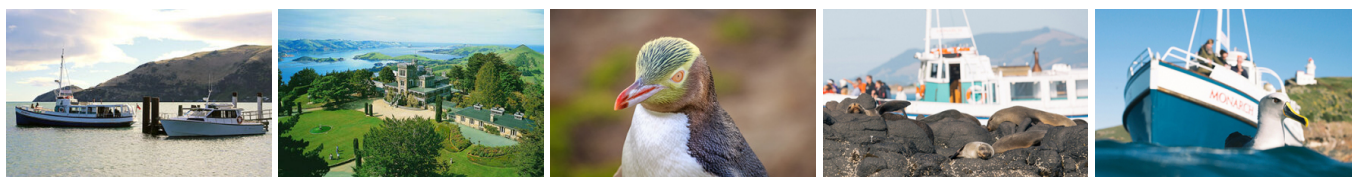
Your accommodation: Scenic Hotel Dunedin City

Just two blocks from the Octagon in the heart of the city, Scenic Hotel Dunedin City is close to shops, parks and the best city attractions and services. The hotel provides excellent 4-star accommodation to Dunedin's visitors.

Meals included: Breakfast



Day 17



Castle to Cruise Tour and Penguin Experience with Monarch

Today you'll explore the wildlife and history of the Otago Peninsula. You'll be welcomed to the MV Monarch for a wildlife cruise around Taiaroa Head, home to the world's only mainland nesting site for royal albatross. Scattered along the rocks you'll also see fur seals basking in the sun and possibly sea lions on the beach. In the water, you may also see penguins, dolphins, and other marine birds. Back on land, you'll take a guided tour of New Zealand's only castle, Larnach Castle built in 1871. Learn of the scandals and history of the castle and explore the beautiful garden of international significance. Your final stop of the day is to The Otago Peninsula Eco Restoration Alliance (formerly Penguin Place), a natural nesting site for the rarest penguin in the world, the Yellow Eyed Penguin.

Just two blocks from the Octagon in the heart of the city, Scenic Hotel Dunedin City is close to shops, parks and the best city attractions and services. The hotel provides excellent 4-star accommodation to Dunedin's visitors.

A horizontal strip of six photographs showcasing the Lake Tahoe region. From left to right: 1. A blue arch bridge spanning a river with yellow wildflowers in the foreground. 2. A large sculpture of two apples (one red, one orange) on a grassy hill next to a wooden sign that reads 'GRANVILLE'. 3. A wooden sculpture of a star or compass rose on a rocky shore overlooking a vibrant blue lake. 4. A tall, thin, golden-brown tree sculpture standing next to a green tree. 5. A view of a small white cabin nestled among evergreen trees. 6. A wide view of a large blue lake with snow-capped mountains in the background under a clear blue sky.

This drive takes you through the heart of the historical Otago Goldfields. The townships of Lawrence, Roxburgh and Alexandra, once booming mining towns in the late 1800's gold rush now sleepy sun-traps bearing little resemblance to their bustling past. However, some buildings do remain as do the original shafts and workings. In more recent times Alexandra has become the 'stone fruit capital' of New Zealand, with the ideal climate for the trees. It is also a great place to buy some of the local produce. The road follows the South Island's longest river, the Clutha River, and at Clyde, you will see one of the largest hydro power stations harnessing its energy before passing through Gibbston to arrive at your destination today, Queenstown.

Right in the heart of the action, the Millennium Hotel is just minutes from Queenstown's central shopping and entertainment district. Outdoor activities such as bungy jumping, white water rafting and jet boating are just some of the easily accessible activities nearby in New Zealand's adventure capital.

Well-known as New Zealand's “adventure capital”, Queenstown is home to a range of adventures, from the world's first and most famous bungy jumps to jet boat thrills, white-water rafting, and skydiving. However, Queenstown offers far more than a fast-paced, action-packed holiday. Settled on the shores of beautiful Lake Wakatipu beneath a soaring panorama of the Remarkables Mountain Range, this alpine town is surrounded by many historic, gastronomic, and scenic wonders. Take a stroll through the beautiful lakefront parks and gardens, browse through market stalls on weekends, dine in wonderful al-fresco restaurants, or ride on the 100-year-old historic Steamship - TSS Earnslaw to Walter Peak Station. Take the Queenstown Gondola up to Bob's Peak and soak up the panoramic views of the magnificent lake and mountain ranges. And after all of that, if you do want the adrenaline rush, Queenstown is known for taking your pick from the Shotover Jet, Canyon Swing, Zipline, Luge, or Heli-hike.

Shotover Jet is the only company permitted to operate in the Shotover River Canyons. It's a thrilling ride! Skim past rocky outcrops at close range in your Shotover Jet 'Big Red', as you twist and turn through the narrow canyons at breathtaking speeds. And a major highlight - hold tight for the world-famous Shotover Jet full 360-degree spins! It is important you read and understand the risks associated with this activity. For more information please see [here](#).

SUGGESTED ACTIVITY - TSS Earnslaw Cruise and Walter Peak Gourmet BBQ Dinner

Enjoy a quintessential Kiwi experience, a delicious gourmet BBQ buffet meal, and a farm demonstration in a stunning lakeside setting. Take in the stunning views of Lake Wakatipu and its surroundings as you cruise across the lake to the historic Walter Peak high country farm aboard the TSS Earnslaw Steamship. Enjoy the ambiance of the heart of the stately homestead while your Colonel's Homestead Restaurant chef prepares a gourmet BBQ dinner. Your seasonal menu includes an extensive selection of local New Zealand produce, including succulent meats and a selection of delicious vegetables and salads. Complete your meal with your choice of delicious desserts, or New Zealand cheeses. After dinner, watch the farm dogs in action with a sheep-herding demonstration and say hello to the other farm animals. Finally, cruise home under the southern stars and enjoy the fresh night air as the lights of Queenstown draw ever closer.

Your accommodation: Millennium Hotel Queenstown

Right in the heart of the action, the Millennium Hotel is just minutes from Queenstown's central shopping and entertainment district. Outdoor activities such as bungy jumping, white water rafting and jet boating are just some of the easily accessible activities nearby in New Zealand's adventure capital.

Meals included: Breakfast



Day 20



Milford Sound Cruise and Coach Tour from Queenstown with RealNZ - Lunch Included

Departing from Queenstown sit back and relax aboard a luxury glass-roofed coach to enjoy a relaxing trip along the shores of Lake Wakatipu and through the rolling countryside to Te Anau. The coach driver provides an informative commentary and plenty of photo opportunities. After a morning tea break in Te Anau, the coach continues along the spectacular Milford Road. On reaching Piopiotahi-Milford Sound, board your vessel for a leisurely cruise in the fiord. The cruise provides excellent viewing opportunities and plenty of time is available to enjoy waterfalls, rainforests, mountains and wildlife. Rain or shine, every day in Piopiotahi-Milford Sound will leave you in awe.

Your accommodation: Millennium Hotel Queenstown

Right in the heart of the action, the Millennium Hotel is just minutes from Queenstown's central shopping and entertainment district. Outdoor activities such as bungy jumping, white water rafting and jet boating are just some of the easily accessible activities nearby in New Zealand's adventure capital.

Meals included: Breakfast, Lunch



Day 21



Queenstown to Franz Josef Glacier via Wānaka

From Queenstown you'll cross the Crown Range, the highest sealed road in New Zealand to arrive in the Alpine town of Wānaka, gateway to Mt Aspiring National Park. Skirting the shores of both Lake Wanaka and Hawea, you will enter the small town of Makarora. Stop at Blue Pools for a 1-hour return walk through the native beech forest to a glacier-fed swimming hole. Continue on through the remote seaside settlement of Haast before heading up the wild West Coast highway you pass through ancient temperate rainforests while getting sneak peeks of the wild coast beaches occasionally. Paringa Salmon Farm is worth a stop to stretch your legs, feed the fish, and stop for lunch and refreshments. Keep heading North and be sure to enjoy the view of the ever-changing towering snowcapped Southern Alps Mountain Range. Fox Glacier welcomes you first, then comes your destination for the night Franz Josef township.

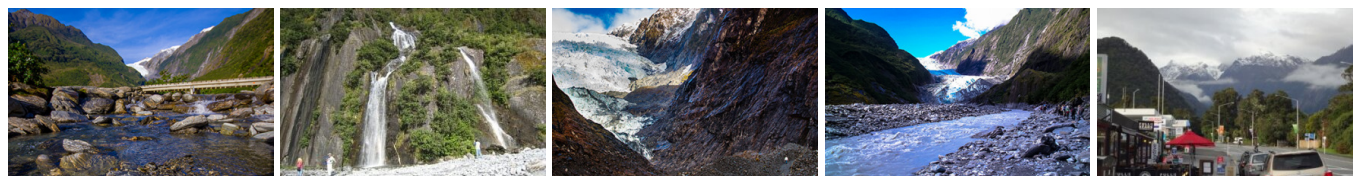
Your accommodation: Scenic Hotel Franz Josef Glacier

Only a breath away from the Franz Josef Glacier, Scenic Hotel is located in the heart of Franz Josef Village. Here you will find all of the amenities you would expect, as well as being close to the shops, restaurants and activities on offer in the beautiful Westland region.

Meals included: Breakfast



Day 22



Explore Franz Josef

Franz Josef is a small yet lively town in the heart of New Zealand's West Coast, best known for its spectacular 12 km-long glacier. The township is surrounded by lush, rainforest-clad mountains and has a vibrant atmosphere with plenty to explore. A variety of scenic walking trails offer incredible views of the glacier, but for a truly up-close experience, a licensed helicopter tour is the only way to set foot on the ice. Beyond the glacier, unwind in the rejuvenating Hot Pools or visit the West Coast Wildlife Centre to spot rare kiwi birds. If you're in the mood for a more relaxed day, the township is home to charming souvenir and gift shops, as well as great dining spots like SnakeBite Brewery and King Tiger. Whether you're chasing adventure or relaxation, Franz Josef is a stunning blend of wild beauty and welcoming hospitality.

SUGGESTED ACTIVITY - Franz Josef Nature Tour with Glacier Valley Eco Tours

Nestled in thick historic West Coast forest and a stone's throw from wild black sand beaches, this is one of the world's most unusual glaciers. Beautiful blue skies or magical misty rain, whatever the weather - you will feel like you are in Narnia or LOTR.

With easy walking at your pace, information on glaciology, geology, geomorphology, flora and fauna, local legends, history, and small guided groups with fantastic guides, you will experience this glacier in style and in the best hands with the only local company. Wander past glacier rivers and streams and through beautiful podocarp forest; discover hidden natural treasures such as native snails, wild native mushrooms, and dozens of species of native orchids; listen to native bird song and waterfalls; see if you can spot a Chamois or a Tahr on the huge snow-capped mountains above while drinking a cup of tea and talking one-on-one with your guide.

SUGGESTED ACTIVITY - Twin Glacier Scenic Helicopter Flight with The Helicopter Line

A spectacular scenic flight soaring over two of New Zealand's most famous glaciers, Fox and Franz Josef. Landing at the head of one and view the incredible sight of this frozen river as it winds its way through ancient carved valleys. It is important to read and understand the risks associated with this activity. A full risk disclosure can be found [here](#).

Your accommodation: Scenic Hotel Franz Josef Glacier

Only a breath away from the Franz Josef Glacier, Scenic Hotel is located in the heart of Franz Josef Village. Here you will find all of the amenities you would expect, as well as being close to the shops, restaurants and activities on offer in the beautiful Westland region.

Meals included: Breakfast



Day 23



Franz Josef to Greymouth Train Station

Head north along the mighty West Coast highway you pass through ancient temperate rainforests while getting sneak peeks of the wild coast beach occasionally. Whataroa is the next town where you can see one of the world's rarest birds, the Kōtuku - White Heron. The Kōtuku nest at the Waitangi Roto Nature Reserve, only accessible with a guided tour from October to March. The next town is Ross which is the site of an old gold mining settlement where the local information centre offers you the chance to pan for gold. Hokitika is a great place to explore craft and gift stores and head to the coast and take in the endless sea views. The Pounamu-Greenstone on offer in Hokitika is probably some of the best you will see in the country. Continue on to Greymouth, the largest town on the West Coast and the starting point for the next leg of your journey the TranzAlpine Scenic Train. Drop your rental car at the Greymouth Train Station depot located at the train station building before boarding your train to Christchurch.

Return your rental car

Return your rental vehicle to your designated depot before your next adventure.

TranzAlpine Scenic Train: Greymouth to Christchurch

Considered one of the world's great train journeys, the TranzAlpine Scenic Train takes you from Greymouth to Christchurch. Travel across the South Island from the west to the east coast through Arthur's Pass National Park. From the comfort of your carriage see lush beech forest, deep river valleys and the spectacular peaks of the Southern Alps. Descend to the windswept Canterbury Plains before arriving in the city of Christchurch.

Shared Transfer from Christchurch Train Station to Christchurch CBD Accommodation with Christchurch Touring Company

On arrival at the Christchurch railway station, you will be met by a driver and transferred to your Christchurch accommodation.

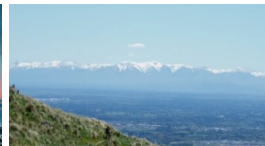
Your accommodation: The George Hotel

The George is the essence of supreme comfort. The award-winning 5 star hotel is opposite Hagley Park and just a few minutes stroll from the Botanic Gardens. It also has an award-winning restaurant, 50 Bistro onsite.

Meals included: Breakfast



Day 24



Private Transfer from Christchurch Accommodation to Christchurch Airport with Christchurch Touring Company

A private transfer will collect you from your accommodation and transfer you to Christchurch Airport in time for your departing flight.

Farewell from Aotearoa-New Zealand

Bid farewell to Aotearoa-New Zealand, taking with you unforgettable memories of its breathtaking landscapes and incredible adventures. In Maori, it is said mā te wā, which is not goodbye, it is see you soon!

Tour details

Departures:	Daily
Tour type:	Nationwide Self Drive
Starts:	Auckland
Finishes:	Christchurch
Tour length:	24
Accommodation:	Hotel 4 star
Car/transport type:	

Included activities

Includes	All breakfasts
Includes	Private train station transfers
Includes	Private airport transfers
Includes	Interislander ferry crossing
Includes	TranzAlpine Train from Greymouth to Christchurch
Includes	Hole in the Rock Dolphin Cruise
Includes	Mitai Maori Village Concert & Buffet Dinner, Rotorua
Includes	Akaroa Harbour Nature Cruise
Includes	Otago Peninsula Wildlife Premier tour including Larnach Castle
Includes	Shotover jet boat ride
Includes	Real Journeys Milford Sound Cruise

Accommodation summary

Day 1	SkyCity Hotel Auckland
Day 2	The Sands Hotel & Resort Hokianga
Day 3	Copthorne Hotel and Resort Bay of Islands, Paihia
Day 4	SkyCity Hotel Auckland
Day 5	Grand Mercure Puka Park Resort
Day 6	Grand Mercure Puka Park Resort
Day 7	Millennium Hotel Rotorua
Day 8	Millennium Hotel Rotorua
Day 9	Art Deco Masonic Hotel
Day 10	Art Deco Masonic Hotel
Day 11	Copthorne Hotel Wellington Oriental Bay
Day 12	Tides Hotel (was Trailways Hotel)
Day 13	Tides Hotel (was Trailways Hotel)
Day 14	Sudima Christchurch City
Day 15	Les Troupes Apartments
Day 16	Scenic Hotel Dunedin City
Day 17	Scenic Hotel Dunedin City
Day 18	Millennium Hotel Queenstown
Day 19	Millennium Hotel Queenstown
Day 20	Millennium Hotel Queenstown
Day 21	Scenic Hotel Franz Josef Glacier
Day 22	Scenic Hotel Franz Josef Glacier
Day 23	The George Hotel