



## Ultimate Discover New Zealand

Explore the length of New Zealand on this comprehensive tour of both the North and South Islands. In the north you'll explore the tropical Bay of Islands and the Kauri Coast as well as the cultural hotspot of Rotorua. After cruising across the Cook Strait to the South Island discover the wildlife mecca of Kaikoura, before continuing south to the snow-capped mountains, alpine lakes and glaciers of the lower South Island. Highlights of the south include the world renowned TranzAlpine scenic train journey and a voyage of discovery in Milford Sound.

Starts in: Auckland  
Finishes in: Christchurch  
Length: 25days / 24nights  
Accommodation: Motels  
Can be customised: Yes

This itinerary can be customised to suit you perfectly. We can add more days, remove days, change accommodations, mix it up, add activities to suit your interests or simply design and create something from scratch. Call us today to get your custom New Zealand itinerary underway.



### Inclusions:

Includes: Late model rental cars

Includes: Unlimited kms

Includes: Airport & ferry terminal rental car fees

Includes: Comprehensive tour pack (detailed itinerary, driving instructions, map/guidebooks, brochures)

Included activity: Private Transfer Auckland Airport to Auckland accommodation with Tourcorp

Included activity: Marlborough Icons Tour with Marlborough Tour Company - Lunch Included

Included activity: Twilight Waipoua Encounter

Included activity: Shared Transfer from the Railway Station to a City Hotel with Christchurch Touring Company

Included activity: Hole in the Rock Cruise with Fullers GreatSights

Included activity: Interislander Ferry Wellington to Picton

Includes: Fully inclusive rental car insurance (excess may apply)

Includes: GPS navigation

Includes: Additional drivers

Includes: 24/7 support while touring New Zealand

Included activity: Electronic Travel Guide and In-Country Support App

Included activity: Milford Sound Cruise and picnic lunch with RealNZ

Included activity: TranzAlpine Scenic Train: Greymouth to Christchurch

Included activity: Private transfer accommodation to Christchurch Airport

Included activity: Huka Falls Jet Boat Ride

: 1 lunch

## Day 1



### Private Transfer Auckland Airport to Auckland Accommodation

You will be met at the Auckland airport by the driver and transferred to your Auckland accommodation.

### Welcome to Auckland

Auckland, New Zealand's self-proclaimed "City of Sails" is the country's largest metro area. Resting between the Pacific Ocean and the Tasman Sea, this urban paradise has something for everyone. Surrounded by native bush, rainforests, and an abundance of beaches, Auckland is a playground for both the city savvy and those with an eye for adventure. Explore the central museums and galleries on foot, or get out onto the water to experience the best views of the city.

### SUGGESTED ACTIVITY - Harbour Sailing Cruise with Explore

Enjoy the City of Sails from the water on a relaxed harbour sailing yacht. This cruise offers a uniquely local experience experiencing the harbour under sail with a small vessel with an intimate and engaging atmosphere. View the stunning city sights while sailing on the inner Waitemata Harbour. Sail where the wind takes us while enjoying Auckland's city highlights; including sailing under the Harbour Bridge and other well-known landmarks along the harbour's edge. The crew's local knowledge will give you the best harbour sailing experience Auckland has to offer. Become the crew and help participate with the sailing experience take the helm while you carve through the water, or if you prefer just sit back and relax above deck.

### Your accommodation: Sudima Auckland City

Conveniently located within easy walking distance of Auckland's bustling shopping, arts, dining and entertainment precincts and opposite the New Zealand International Convention Centre.



## Day 2



### Collect your rental car

This tour can be priced with any of the rental cars available in our fantastic range, from economy hatchbacks to prestige saloons and SUV's.

### Auckland to Hokianga via Waipoua Forest

The drive north to Waipoua Forest and the Kauri Coast takes you along the remote West Coast of the North Island and around one of the world's largest natural harbours, the Kaipara Harbour. The region was worked by immigrant Dalmatians who toiled to make a living from the gum fields. A visit to the Kauri Museum at Matakoho tells the story of their hardships and pioneering spirit and of the remarkable impact this tree had on the region and the wider world and is must do. You'll have plenty of opportunity to stop along this spectacular route, so be sure to leave time for sightseeing.

### Twilight Waipoua Encounter

Experience the Waipoua Forest at night on this spectacular 4 hour tour. Learn about the rich birdlife and fauna that inhabit the forest, including the carnivorous kauri snail. You'll also get to experience the deep spiritual respect the Maori people have for this place. Your Maori guide will brief you on the protocols for your visit and you once formal greetings have been made you will be allowed to meet the giant Tane Mahuta, or Lord of the Forest - the oldest Kauri tree in the world.



## Your accommodation: Opononi Hotel

With magnificent harbour views, situated near the mouth of the Hokianga Harbour and 15 minutes drive from Kauri giant of the forest, Tane Mahuta, the Opononi Resort Hotel is ideally placed for those travellers wishing to explore this beautiful and historic area of Northland.



---

## Day 3



### Hokianga to Paihia, Bay of Islands

Heading east from the Hokianga, a detour to Rawene is recommended (signposted) to view the historic wooden buildings on the harbour and stop for a break at the Boatshed Cafe, sitting on the water with fantastic views. Crossing from the West Coast to the east you soon arrive at the subtropical Bay of Islands. A slight detour north will take you to Kerikeri, famous for its crafts and fruit orchards, it's also the largest township in the region. Kerikeri is home to New Zealand's oldest standing European buildings, the Stone Store and Kemp House, both are open to visitors. Continue on to Paihia, an excellent base to explore the Bay of Islands. Nearby is a wealth of early New Zealand history, learn about the signing of the Treaty at Waitangi and Maori culture. Across the harbour is the cute village of Russell, with many historic buildings, a lovely place to explore. Paihia is also the launching point for many marine encounters, see dolphins, kayak or cruise the beautiful Bay of Islands, there are many ways to experience this paradise.

---

### Hole in the Rock Cruise with Fullers GreatSights

Board your cruise and take in the stunning views as you glide out through the islands and along the Rakaumangamanga Peninsula to Cape Brett, where a historic lighthouse keeps watch over and Piercy Island/Motukōkako, or as it is popularly known as the Hole in the Rock. According to Māori legend, local warriors used to paddle through the Hole in the Rock in their canoes before departing for battle. Drops of water from the cave roof above were a good omen. If conditions permit, your skipper will expertly guide the ship through the narrow space. Keep an eye out for common and bottlenose dolphins, whales, and other marine life during your cruise, and have your camera ready as you get up close to the action. Stop off at Otehei Bay on Urupukapuka Island where you have time to relax, take a walk, have a swim, or enjoy a bite to eat and drink from the on-site fully licensed cafe. The purpose-built catamaran is licensed by DOC (the Department of Conservation) for dolphin viewing and the crew has years of experience locating dolphins in these waters.&nbsp;

---

## Your accommodation: Sea Spray Suites

Sea Spray Suites offers comfortable and relaxing accommodation close to Paihia's best activities and attractions. Directly across the road is the beautiful Te Ti Beach, exploring Paihia's beautiful waters and wildlife is only a short step away. If you are interested in experiencing New Zealand's heritage, The Waitangi Treaty House is only 1km away.



---

## Day 4



### Explore the Bay of Islands

Commonly known as the 'winterless north', New Zealand's Bay of Islands is made up of over 140 subtropical atolls. Renowned for its untouched beaches, abundant marine life and idyllic climate, this tropical paradise ticks all the boxes. Spend some time on a remote stretch of beach, or see the dolphins on an ocean safari. If diving is your thing, take the morning to descend the Rainbow Warrior - The Greenpeace flagship sunk by French saboteurs in 1985. Wander around Russell, a whaling port founded in 1843. Learn about our culture in historic Waitangi, the site where The Treaty of Waitangi was signed in 1840 between the Maori and European settlers dictating the terms by which New Zealand would become a British colony. Alternatively you may like to take a day tour to Cape Reinga, the very top of the North Island.

## SUGGESTED ACTIVITY - Cape Reinga & Ninety Mile Beach Full Day Tour with Fuller GreatSights - Lunch Included

Journey to the very tip of the North Island and uncover a region of rich Māori tradition along the way on an unforgettable full-day tour. Travel along the sand-swept shore of Ninety Mile Beach in our purpose-built coach and experience sandboarding (weather permitting). In Māori tradition, Cape Reinga or Te Rerenga Wairua is the place where spirits depart on their long journey back to the homeland. Stand at the northernmost point of New Zealand and drink in the panoramic views. As you stand beneath the iconic lighthouse, and watch the Tasman Sea and the mighty Pacific Ocean collide far below, you'll feel the power of this special place. Throughout the day your local driver guide will provide an entertaining and thought-provoking insight into the culture, history and natural wonders of the Far North. Your tour also includes a locally prepared lunch to keep you fuelled throughout the day.

### Your accommodation: Sea Spray Suites

Sea Spray Suites offers comfortable and relaxing accommodation close to Paihia's best activities and attractions. Directly across the road is the beautiful Te Ti Beach, exploring Paihia's beautiful waters and wildlife is only a short step away. If you are interested in experiencing New Zealand's heritage, The Waitangi Treaty House is only 1km away.



## Day 5



### Bay of Islands (Paihia) to Snells Beach

A short distance from Paihia is the small township of Kawakawa, which is worth a detour to see the very decorative public toilets designed by the famous Austrian artist Hundertwasser. For train buffs a ride on Gabriel the restored steam locomotive might also be a possibility. Continue south through Whangarei which could coincide with a lunch stop and visit the basin and marina areas. Continuing south there is the option to leave State Highway 1 at Waipu and follow the coastal road via Mangawhai all the way to Wellsford back on State Highway 1. Further south you will leave State Highway 1 at the small township of Warkworth, a lovely place to stroll along the tidal river and see the historic ship Jane Gifford. Continue through the rolling countryside to your destination of Snells Beach. In the area you can visit Brick Bay Vineyard, the charming village of Matakana or a little further you will find the often deserted beaches of the Tawharanui Marine Reserve.

### Your accommodation: Snells Beach Motel

Snells Beach Motel is perfectly situated, on the Mahurangi East Peninsula, overlooking the beautiful Kowhai Bay and in the heart of the wonderful Matakana Coast Wine Country area.



## Day 6



### Snells Beach to Rotorua

Continuing south through Auckland, State Highway 1 quickly takes you into rolling green farmland and the rich dairy pasture of the Waikato. The Bombay Hills mark the outer boundary of the greater Auckland area and it's here you turn inland to central Waikato. This is hobbit country and the route takes you through the town of Matamata where you can still visit the film locations made famous in the Lord of the Rings trilogy at Hobbiton Movie Set and Farm Tours. Continuing on you'll pass several small farming communities before telltale signs of steam and other geothermal activity signal your arrival into Rotorua.

## SUGGESTED ACTIVITY - Te Pā Tū Evening Maori Cultural Experience

New Zealand's Most Awarded Cultural Attraction, presenting Te Pā Tū. Feast on song, drama, tradition, and divine seasonal kai (cuisine) within the forest Pā (village) blanketed by towering Tawa trees, blazing bonfires, and a forest-formed amphitheatre. Te Pā Tū shares Māori history, traditions, and cultural aspirations across 4-hours of celebration and feasting. These events change with each season of the maramataka, the Māori lunar calendar.

---

### Your accommodation: Bella Vista Rotorua

Bella Vista Rotorua offers motel accommodation just 10 minutes walk from the city centre and close to the lake front. Modern well-equipped units provide a comfortable stay.



---

## Day 7



### Rotorua to Taupo

Today drive through the heart of the Central North Island volcanic plateau. Visit the geothermal regions Wai O Tapu Thermal Wonderland and Waimangu Volcanic Valley, before arriving into the town of Taupo, which sits on New Zealand's largest lake - Lake Taupo. Just north of the town are the Huka Falls and a short detour to view is highly recommended, as is a visit to the nearby Craters of the Moon geothermal reserve.

---

### Huka Falls Jet Boat Ride

The Huka Jet is 30 minutes of pure fun and exhilaration, skimming close to cliffs, sliding past trees, feeling the adrenalin of full 360 degree spins. The excitement continues right up to the base of the foaming Huka Falls, where you get a spectacular water level view to New Zealand's most visited natural attraction. Nothing compares to watching 220,000 litres per second tumbling over the cliff face towards you. The water from the mighty Huka Falls runs down the Waikato River through a series of Hydro Power Stations. You'll get a view of the Wairakei Geothermal Power Station in the comfort of a powerful Chevrolet V8 jet boat. This unique Geothermal Power Station uses underground geothermal activity to produce hot steamy water. The Waikato Rivers beautiful environment is varied and unique and is New Zealand's longest river flowing north from our largest lake, Lake Taupō.

---

### Your accommodation: Beechtree Motel

Beechtree Motel offers luxury, modern apartment and motel style accommodation. Just a five minutes stroll to cafes, restaurants and the Taupo lakefront.



---

## Day 8





## Taupo to Wellington

The drive around the edge of New Zealand's largest lake leads you to Turangi, the self proclaimed Trout Fishing Capital. You can view the Department of Conservation's National Trout Centre and Hatchery here. You then climb up onto the central plateau and the high country Rangipo Desert. Skirting Tongariro National Park, one of New Zealand's three world heritage sites and clouds permitting you can see the 2,500 metre peak of the still volcanically active Mt. Ruapehu. You might recognise the symmetrical shape of Mt. Ngauruhoe as this was used as the scenery of Mt. Doom in the Lord of the Rings Trilogy. A little further the military town of Waiouru also hosts the Army Museum, an incredible collection of New Zealand's military history and a memorial to its servicemen. Heading south you pass through the rural towns of Taihape, Mangaweka and Bulls before arriving on the Kapiti Coast. The coastal seaside towns of Paraparaumu, Paekakariki and Plimmerton are worth a short detour before arriving into the capital city of Wellington. Plan to take most of the day for this drive.

Wellington City is New Zealand's capital. It sits on a wonderful deep natural harbour and is surrounded by bush clad hills. The city centre itself is quite compact (only around 1 square kilometre) and so exploring on foot is relatively easy. From your city centre accommodation you can easily stroll the cafes and restaurants around Courtenay Place and if you arrive early enough New Zealand's national museum, Te Papa, is also close by.

---

### SUGGESTED ACTIVITY - Zealandia By Night Wildlife Sanctuary Tour

Taking a night tour of Zealandia wildlife eco-sanctuary is an unforgettable experience and one that comes highly recommended. A conservation success and safe haven for some of New Zealand's rarest native animals, Zealandia is home to many remarkable species of birds, reptiles and insects living wild within a beautiful 225 hectare (one square mile) valley, just 10 minutes from the central city.

Your tour begins with an interactive exhibition before you walk through the gates of Zealandia predator-exclusion fence into the sanctuary. Your guide will then lead you on a torch-light walk through the native New Zealand bush. Possible sights include Kiwi foraging on the forest floor, tuatara hunting for food, glowworms shining, tiny Maud Island frogs in their enclosure, pateke (brown teal) ducks feeding at night and kaka (parrots) coming in to roost. Zealandia is one of the best places to see kiwi in the wild. Over 100 of these nocturnal birds live freely in their natural environment inside the safety of the sanctuary valley, so your chances of seeing one are high!

---

### Your accommodation: CityLife Wellington

City Life Wellington is a suite style hotel with every amenity required for a comfortable stay, as well as being in a superb location to explore the compact city centre. Situated on Lambton Quay, you'll find the best shopping, tourist attractions and cultural landmarks all within easy walking distance.



---

## Day 9



### Interislander Ferry Wellington to Picton

The 92 km journey between Wellington and Picton takes around 3 hours and has been described as 'one of the most beautiful ferry rides in the world'. Leaving Wellington Harbour you pass many interesting points such as Pencarrow Head on top of which is New Zealand's oldest lighthouse (1859). Red Rocks is home to a seal colony and Oterangi Bay is the site which recorded the country's highest ever wind speed of 268 kph (167 mph).

From the Cook Strait spectacular views of the Kaikoura Ranges on the South Island can be enjoyed and dolphins and many sea birds are often seen. Around one hour of the cruise takes you through the Marlborough Sounds and this region of bush covered mountains, small islands, crystal clear waters and secluded bays offer remarkable photographic opportunities. The final leg of your cruise travels through Queen Charlotte Sound before coming to an end in the picturesque town of Picton.

---

### Collect your rental car

This tour can be priced with any of the rental cars available in our fantastic range, from economy hatchbacks to prestige saloons and SUV's.

---

### Picton to Blenheim

Only short 30 minute drive, you'll follow the valley south to arrive in Blenheim, located in the heart of Marlborough - New Zealand's largest wine producing region. Go through acres of leafy green vines and marvel at the magnificent 'dry hills' of Marlborough in the distance.

---

### SUGGESTED ACTIVITY - Half Day Wine Tour

An afternoon among the vines! Be immersed in the Marlborough wine country with the Sounds Connection half day wine tour. You'll be collected from your accommodation and taken through three or four hand-picked wineries to taste the award-winning produce this region is known for. You'll also hear about the history of winemaking in Marlborough as well as learning the unique processes each winery goes through. A lunch stop is not included in this tour so we do advise you have something to eat prior to this activity.

### Your accommodation: Bella Vista Blenheim

In a quiet location and close to town, Bella Vista Motel is in the heart of Blenheim. Surrounded by the world-famous Marlborough wine growing area and just a few minutes walk from a wide variety of restaurants and bars.



---

## Day 10



### Blenheim to Kaikoura

Cross the 'dry hills' of Marlborough and head towards one of the most spectacular coastlines of the South Island, the Kaikoura Coast. The road hugs the shore for around 50 kilometres and offers many chances to view native wildlife. To the east is the South Pacific Ocean and to the west the towering Kaikoura Ranges. Kaikoura Township is a bustling little place with many cafes, restaurants and shops, but the main reason for visiting here is the wildlife and it's one of the only places in New Zealand you can see whales year round.

---

### Marlborough Icons Tour with Marlborough Tour Company - Lunch Included

Marlborough has become world famous for two iconic areas, the Marlborough wine region and the Marlborough Sounds. Enjoy the perfect combo tour through both areas on the Marlborough Icons Tour. This tour starts in the heart of the Marlborough wine region with two fine wine experiences including Cloudy Bay winery, then in the afternoon enjoy a totally unique Seafood Cruise in the Marlborough Sounds. Learn about seafood farming, take in the stunning scenery and enjoy fresh local seafood with a glass of award winning Marlborough Sauvignon Blanc.

---

### Your accommodation: The White Morph, Kaikoura

Set on the Esplanade in Kaikōura, The White Morph enjoys commanding views of the ocean and mountains. Just a 10-minute walk into town, The White Morph has been beautifully placed so that you can take in the spectacular scenery of Kaikoura while enjoying the variety of attractions on offer.



---

## Day 11



### Kaikoura to Christchurch

Today you travel down the coast before heading inland through the North Canterbury wine region - the Waipara Valley. As you drive through this area you'll be greeted by one of New Zealand's most notorious animals, the sheep. If you've time on your hands we recommend taking a detour to Hanmer Springs for relaxing dip in its thermal pools. Arriving into Christchurch you'll see a new and improved city, steadily rising from the ruins of the 2011 earthquake.

---

### SUGGESTED ACTIVITY - Ocean's Cabin with Whale Watch Kaikoura

Experience New Zealand's only marine based whale watching company. Whale Watch Kaikoura offer a once-in-a-lifetime, up close encounter with the giant Sperm Whale. You are also likely to encounter New Zealand fur seals, dusky dolphins and albatross. Depending on the season you may also see pilot, blue and southern right whales as well as migrating humpbacks. Often orcas can be spotted here and the world's smallest dolphin, the Hector's, occasionally make an appearance.

Cruise in style on modern catamarans, specifically designed for whale watching, featuring large passenger cabins and outside viewing decks. Passenger numbers for each tour are kept below the vessel carrying capacity to ensure your tour experience remains a personal one.

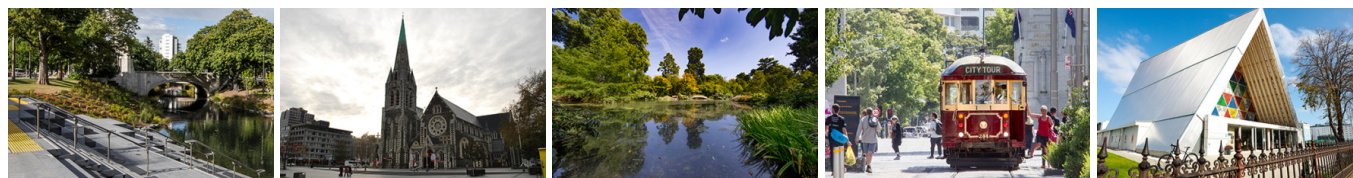
### Your accommodation: Bella Vista Christchurch

Bella Vista Motel Christchurch offers a great range of comfortable modern units with excellent facilities. Enjoy the convenience of being located in close proximity to the Christchurch CBD, shops, entertainment and other activities.



---

## Day 12



### Explore Christchurch City

Following the 2011 earthquake that razed its centre and much of the outlying suburbs, Christchurch is well into a billion-dollar makeover. In the middle of the Canterbury Plains, bordering the Pacific Ocean, New Zealand's newest city is an ideal gateway to exploring the middle of the South.

Go punting on the Avon River, take a historic tram ride, catch the gondola to the rim of an extinct volcano or do all three! See the world's only Cardboard Cathedral and for nature enthusiasts - wander the renowned Christchurch Botanic Gardens, or head to Oxford Terrace in the city to find a great spot to eat or drink.

Drive an hour in any direction to ski, mountain bike, wine taste, whale-watch, bungee jump or play golf. Take the winding Port Hills road to the French settlement of Akaroa and tour the vines in Waipara for an authentic New Zealand wine-tasting experience. &nbsp;

---

### SUGGESTED ACTIVITY - Christchurch Gondola

In the Heathcote Valley, just fifteen minutes from the heart of Christchurch City, ride the Christchurch Gondola for nearly a kilometer to the collapsed rim of an extinct volcano, which exploded six million years ago. Take in the spectacular panoramic views of the central city, Lyttelton Harbour, Banks Peninsula, Canterbury Plains, and the distant peaks of the Southern Alps. Wander the summit complex, enjoy a coffee or lunch in the cafe, and choose one of many nature walks to explore or visit the Christchurch Discovery Ridge, a dramatic reconstruction of the history of the Port Hills and Christchurch.&nbsp;

---

### SUGGESTED ACTIVITY - Akaroa Day Tour and Harbour Nature Cruise with Leisure Tours

Enjoy a full day tour to Akaroa with Canterbury Leisure Tours. You will travel the scenic route to Akaroa via Governors Bay, Gebbies Pass, Lake Forsyth and Little River. Stop for spectacular views over the Akaroa Harbour. You'll then take a two hour cruise through Akaroa Harbour for a chance to see this quaint French settlement from the sea as well as dolphins, penguins and seals. On the return journey to Christchurch you will visit the cheese factory at Barry's Bay and sample some of New Zealand's finest cheese.

Lunch at the popular waterfront restaurant 'Bully Hayes' is included offering a wide choice of New Zealand cuisine.

---

### Your accommodation: Bella Vista Christchurch

Bella Vista Motel Christchurch offers a great range of comfortable modern units with excellent facilities. Enjoy the convenience of being located in close proximity to the Christchurch CBD, shops, entertainment and other activities.



---

## Day 13





## Christchurch to Lake Tekapo

Today you head into the heart of the South Island. Crossing the vast Canterbury Plains along the inland scenic route the first township of Geraldine offers an ideal refreshment stop before you head into Mackenzie country.

Passing through places such as Beautiful Valley it's not hard to understand where the names originate. Ascending Burkes Pass and onto the high country plateau and the picturesque town of Lake Tekapo, the first of the large Southern Lakes. It's a great place to take a scenic flight, enjoy a guided horse trek, a boat trip on the pristine lake or just enjoy the magnificent views.

---

### SUGGESTED ACTIVITY - Dark Sky Project Summit Experience

Earth and Sky Stargazing tour departs nightly from the office in the Lake Tekapo township. Travel to the Mt John observatory high above the village where you will explore features of the majestic Southern Sky. Earth and Sky provide the equipment and the guidance, all you need to bring are keen eyes, warm clothes and a desire to see, learn, and experience.

Navigating your way through the Southern Sky using various telescopes and the naked eye, you will see amazing sights such as our own Milky Way Galaxy, the Southern Cross, Alpha-Centauri - our closest neighbouring star at only 4.3 light years away, and Sirius - the brightest star in our sky.

Behold and learn about our closest neighbouring galaxies, the Magellanic Clouds, which grace our night sky along with constellations such as Orion the Hunter and Scorpius.

You may also have the opportunity to see star clusters like the beautiful Jewel Box; awe inspiring planets; nebulae, immense clouds of gas and dust; and distant galaxies which test the limits of human imagination.

---

### SUGGESTED ACTIVITY - Tekapo Springs Hot Pools

Tekapo Springs offers three adjoining main Hot Pools for you to sit back, relax and enjoy yourself while looking out to the beautiful Two Thumb range and stunning Lake Tekapo. Pool temperatures range from forty degrees celsius to thirty-six degrees celsius and each pool offers something different - massage jets to assist in taking away any aches and pains and fountains to splash under.

---

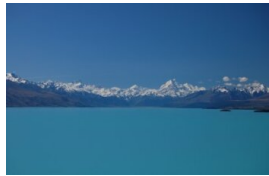
### Your accommodation: Peppers Bluewater Resort

Peppers Bluewater sits overlooking stunning Lake Tekapo and the Southern Alps and is just a short walk to the small towns facilities. Also close by is the Tekapo Springs Day Spa, a great place to relax after a day exploring. Facilities include an on site restaurant and bar.



---

## Day 14



### Lake Tekapo to Aoraki Mt Cook National Park

Lake Pukaki is just another 30 minutes from Lake Tekapo and its from here you can be rewarded with spectacular views the full length of the lake and into Aoraki Mt Cook National Park. In Mt Cook Village a myriad of activities are available from glacier landings by ski plane or helicopter, kayaking on a glacial lake and a host of walks to suit all abilities and time frames. At The Hermitage Hotel the Sir Edmund Hillary Alpine Centre is a must see.

Please note: There are no food shops at Mt Cook, and dinner options are limited to one restaurant. If you wish to self-cater, you must stock up before arriving in Mt Cook, or make dinner reservations in advance.

---

### SUGGESTED ACTIVITY - Glacier Explorers Mt. Cook

Experience 500 year old icebergs up-close on the Mt Cook terminal lake. The Glacier Explorers tour is the only one of its kind in New Zealand and one of only three in the world! Very few glaciers terminate into lakes and even fewer of them are accessible. See towering ice cliffs and floating icebergs from the safety of a specially designed boat. These boats provide a safe way to view unseen and inaccessible areas of New Zealand's largest glacier The Tasman.

---

### Your accommodation: Mt Cook Motel

Mt Cook Motel is located in the centre of Mt. Cook village. The self-contained units are spacious and all are surrounded by alpine mountain views.



## Day 15



### Mt Cook National Park to Oamaru

Twizel, just south of Aoraki Mt Cook National Park was the location of many Lord of the Rings movie scenes and a little further on is Oamaru, the gliding capital of New Zealand. Wrinkly Rams is a local cafe; with great coffee and fresh homemade food. Heading down the Waitaki valley you follow the hydro power generating system towards the east coast. The town of Oamaru is most famous for its buildings constructed with the unique locally quarried white stone. Explore the buildings around the old quarter and after dusk take a tour to see the blue penguins come ashore.

---

### SUGGESTED ACTIVITY - Oamaru Blue Penguin Colony Premium Evening Viewing

Oamaru's Blue Penguins nest close to town under the cliffs along the Historic Harbour foreshore. The Oamaru Blue Penguin Colony is just beyond the Victorian Heritage Precinct and you are within walking distance of the town centre, close to shops, restaurants and accommodation. When penguins are on shore and have chosen to nest in the Blue Wing it is possible to see them within a couple of feet of you. At the appropriate times of the year you may see them incubating eggs or guarding the tiny chicks. You can watch the chicks as they wait for their daily meal to return with their parents.

You will be seated 2-3 metres from where the blue penguins arrive and cross into the colony. And be treated to an informative commentary by a trained guide. This Viewing is 1 and a half hours and includes the opportunity to enter the breeding colony on a boardwalk and walk among the blue penguin nesting burrows.

---

### Your accommodation: Highfield Mews

Quiet and private in a village like setting, Highfield Mews Motel places you in the heart of Oamaru. Within easy walking distance of the town's cafes, restaurants, shops and Historic Precinct. Highfield Mews offers many features and comforts that result in superb suites.



---

## Day 16



### Oamaru to Dunedin

The drive from Oamaru to Dunedin takes you along the Otago Coastline and some of the earliest inhabited places in New Zealand. Just south of Oamaru is Totorā Estate and it is from here that the modern meat export industry was born. Sheep carcasses were processed here before being sent to England in 1882 by the first freezer ship, the clipper Dunedin.

One of the most intriguing places to explore is Moeraki and the Moeraki Boulders. These unique geological features are easily accessed and well signposted from the main highway. Some of the boulders actually contained dinosaur bones but according to Maori legend they were gourds washed overboard as a waka (canoe) was wrecked on a nearby reef.

Matanaka is a short detour off the main road and here you can take a short walk to see some of the oldest remaining buildings in the South Island.

Arriving into Dunedin you can appreciate the city's Edwardian and Scottish heritage through its fine buildings particularly around the Octagon and city centre and parking your car close by and exploring on foot is highly recommended. A not to be missed building is the railway station, recently listed as one of the world's top 100 buildings to see.

---

### Explore Dunedin and the Otago Peninsula

Known as the Edinburgh of the South, Dunedin City has a heavy Scottish influence. Surrounded by rugged coastal plains and windswept beaches it's home to an eclectic mix of historical and modern architecture as well as industrial technology. Renowned for its Flemish Baroque-inspired 'gingerbread house' Railway Station, this university town is bustling with life. Head to the Saturday farmers market held in the aforementioned railway grounds for a taste of organic produce, handmade crepes and local honey. Explore the many cafes and wine bars in The Octagon, then continue on a self-guided walking tour of the internationally acclaimed Street Art dotted around the city. Drive to the coast and watch the freighters passing in the distance while you sunbathe, or hire a mountain bike and test your legs on one of the many trails available in the area. For a more immersive historical experience, follow the coast to New Zealand's only castle, Larnach Castle. On your way back be sure to head to the Otago Peninsula to see the largest mainland Albatross colony in the world.

## SUGGESTED ACTIVITY - Monarch Wildlife Cruise from Wellers Rock

An unforgettable experience viewing rare and fascinating wildlife. Board the Monarch Boat and take in the fascinating sight of the Northern Royal Albatross as it comes into nest on the spectacular cliffs of Taiaroa, Otago Peninsula. You'll also see eight other species of birds including sooty shearwaters and petrels as well as sea lions and fur seals and if you're lucky dolphins and whales.

---

## SUGGESTED ACTIVITY - Larnach Castle and Gardens

Larnach is New Zealand's only Castle, built in 1871 by politician and merchant, William Larnach, a man of great vision who helped shape New Zealand's early history. It was built for William's beloved first wife Eliza; it took 200 workmen three years to build the shell and a further twelve years were spent by master craftsmen to embellish the interior. The Castle is located high up on the Otago Peninsula and looks down on Dunedin city giving beautiful views. The gardens have an International Garden of Significance status and have a unique collection of antiques, including a unique nine piece Totara knot suite. The Ballroom cafe is a fantastic place to rest and reflect on all you have seen while enjoying a delicious range of refreshments. As with the entire castle, the ballroom had an interesting and varied history prior to its beautiful restoration, uses ranged from an asylum, antique sales room to the penning of sheep. In this self guided exploration of the castle and gardens, you are free to discover on your own.

---

## Your accommodation: Motel on York

Motel on York is located in the heart of Dunedin city. The property offers superior accommodation only 300 metres away from cafes and restaurants.



---

## Day 17



### Dunedin to Te Anau

The drive to Te Anau takes you through classic Southland farming scenery. Head off-the-beaten-track today and follow the coastline instead of the inland route. Go through The Catlins area and be sure to take a detour to Kaka Point to view its majestic cliffs and pounding surf. Continue through Invercargill to Riverton and Colac Bay, and then head north to Manapouri. From here you can embark on a day or overnight cruise to the remote Doubtful Sound, renowned for its natural beauty. Just a short way further will bring you to your lakeside destination of Te Anau, gateway to Fiordland National Park and Milford Sound.

---

## Your accommodation: Lakefront Lodge

Stylish self contained motel units less than one minute walk from Te Anau Lakefront. Close to shops, cafes and restaurants.



---

## Day 18





## Te Anau to Milford Sound and return to Te Anau

The road to Milford Sound offers some of the most beautiful and iconic scenery in the country. From crystal clear lakes and towering mountains to lush glacier formed meadows, this area is dramatic and unyielding. Stretch your legs on the Chasm Walk, a short stroll through native beech forest to see several powerful waterfalls. Continue on through the Homer Tunnel, an engineering marvel at 1219 metres long. Arriving into the village of Milford, you will be greeted with an amazing view of Mitre Peak. A day cruise into the heart of the sound is not to be missed. You'll learn about how this magnificent area was formed and experience the wonder of the falls that line the Fiord before back-tracking the way you came.

Please note: Make sure to allow 2.5hrs to Milford Sound, this takes into account the current road works on the Milford Road.

---

## Milford Sound Cruise with RealNZ

Get up close and personal with Milford Sound on a leisurely cruise of this spectacular fiord. From thundering waterfalls to sky-high mountains to lush rainforests, Milford has it all. Experience the spray of a waterfall as you cruise close to sheer rock faces. Informative, participative and relaxed, this is the perfect way to experience Milford Sound to the fullest.

---

## Your accommodation: Lakefront Lodge

Stylish self contained motel units less than one minute walk from Te Anau Lakefront. Close to shops, cafes and restaurants.

Meals included:            Lunch



---

## Day 19



### Te Anau to Queenstown

Today you'll cross vast tussock lands on your way to Queenstown. Pass through Mossburn, the deer capital of the nation. Continue on through the Southland countryside where the road begins to hug the lake edge and the Remarkables mountain range towers over your approach into the adventure capital of New Zealand.

---

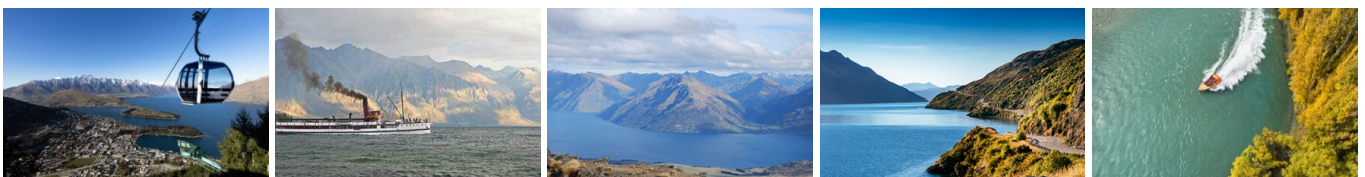
## Your accommodation: Scenic Suites Queenstown

Scenic Suites Queenstown offers guests exquisite style, comfort and spectacular views over Lake Wakatipu and the Southern Alps. The hotel prides itself on its four star hospitality that will make your stay in Queenstown even more memorable.



---

## Day 20



### Explore Queenstown

Well-known as New Zealand's 'adventure capital', Queenstown is home to a range of adventures, from the world's first and most famous bungy jumps to jet boat thrills, white-water rafting, and skydiving. However, Queenstown offers far more than a fast-paced, action-packed holiday. Settled on the shores of beautiful Lake Wakatipu beneath a soaring panorama of the Remarkables Mountain Range, this alpine town is surrounded by a plethora of historic, gastronomic, and scenic wonders. Take a stroll through the beautiful lakefront parks and gardens, browse through market stalls on weekends, dine in wonderful al-fresco restaurants, or ride on the 100-year-old historic Steamship - TSS Earnslaw to Walter Peak Station. Take the Queenstown Gondola up to Bob's Peak and soak up the panoramic views of the magnificent lake and mountain ranges. And after all of that, if you do want the adrenaline rush, Queenstown is known for taking your pick from the Shotover Jet, Canyon Swing, Zipline, Luge, or Heli-ski.

## SUGGESTED ACTIVITY - Shotover Canyon River Jet Boat Adventure

Riding the iconic 'Big Red' Jet Boat through the narrow Shotover Canyon is an exhilarating experience not to be missed. Your skilled jet boat driver pushes the boat to 85 kph, skimming across shallow water and past towering canyon walls. This 25 minute white water ride includes 360 degree spins and maximum thrills.

## SUGGESTED ACTIVITY - Skyline Gondola Queenstown and 3 Luge Rides

In the heart of Queenstown, located 450 metres above town in the Ben Lomond Scenic Reserve is the Skyline Complex. A gondola ride to the summit makes for awe-inspiring views of the city surround. Arrive at the complex and wander the outside viewing decks for a picture perfect outlook. Then onto the Luge! The 800 metre luge track offers an exhilarating journey through banked corners, tunnels and dippers.

## SUGGESTED ACTIVITY - TSS Earnslaw cruise to Walter Peak including gourmet BBQ dinner and a farm tour

Enjoy a quintessential Kiwi experience, a delicious gourmet BBQ buffet meal and a farm demonstration in a stunning lakeside setting. Take in the stunning views of Lake Wakatipu and its surroundings as you cruise across the lake to the historic Walter Peak high country farm aboard the TSS Earnslaw Steamship.

Enjoy the ambience of the heart of the stately homestead while your Colonel's Homestead Restaurant chef prepares a gourmet BBQ dinner. Your seasonal menu includes an extensive selection of local New Zealand produce, including succulent meats and a selection of delicious vegetables and salads. Complete your meal with your choice of delicious desserts, New Zealand cheeses, tea and coffee.

After dinner, watch the farm dogs in action with a sheep-herding demonstration and say hello to the other farm animals. Finally, cruise home under the southern stars and enjoy the fresh night air as the lights of Queenstown draw ever closer.

## Your accommodation: Scenic Suites Queenstown

Scenic Suites Queenstown offers guests exquisite style, comfort and spectacular views over Lake Wakatipu and the Southern Alps. The hotel prides itself on its four star hospitality that will make your stay in Queenstown even more memorable.



## Day 21



## Queenstown to Wanaka

Leaving Queenstown you'll drive over New Zealand's highest sealed road, the Crown Range before arriving into the resort town of Wanaka.

## SUGGESTED ACTIVITY - Wanaka Wine Tours Boutique Central Otago Wine Trail

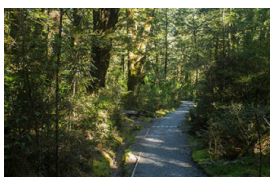
This small group wine tour (maximum 8) offers a relaxed and personal introduction to the wines and scenery of the Central Otago region. This tour is a great way to explore award-winning vineyards hidden amongst the rugged landscape of Central Otago. Visit and enjoy tastings at 4 Central Otago vineyards including a delicious mid-afternoon platter to enjoy with your tastings. You'll also discover the history of the region with a visit to Old Cromwell Town, a charming heritage precinct that has been revitalised into a boutique arts and crafts village.

## Your accommodation: Clearbrook Motel and Serviced Apartments

Clearbrook offers luxury apartment style and townhouse accommodation options and is located just metres from Wanaka's main street and its majestic lake front.



## Day 22





## Wanaka to Franz Josef Glacier

The route follows the shores of Lakes Wanaka and Hawea before you enter the village of Makarora, the gateway to Mt. Aspiring National Park. The Blue Pools, just outside Makarora, are a wonderful 30-minute walk through pristine native beech forest. Descending into Mt. Aspiring National Park and towards the Haast Pass, crashing rivers and waterfalls are around every corner. Crossing the Haast River you are now truly on the wild West Coast, a 600-kilometre stretch of bush, rainforest, and podocarp forest.

Paringa Salmon Farm is a great halfway stop to stretch your legs, feed the fish, and stop for lunch or refreshment.

First Fox Glacier welcomes you to the glacier region and Franz Josef township is just a further 45 minutes' drive over the impressive Fox Hills.

### Your accommodation: Punga Grove Motel & Suites

Punga Grove is right in the heart of Franz Josef Glacier village and offers affordable and stylish accommodation in a beautiful rainforest setting.



## Day 23



### Explore Franz Josef

Franz Josef is a small but lively town in the heart of the West Coast, known for its 12 km long glacier. Surrounded by lush rainforest-clad mountains the township has a vibrant and bustling atmosphere. To see the ice from a viewpoint you can walk along the valley floor to the viewpoint below the terminal face. However, to go on the glacier itself you must take a licensed helicopter tour.

### SUGGESTED ACTIVITY - Twin Glacier Scenic Helicopter Flight with The Helicopter Line

Take a spectacular scenic flight over two of New Zealand's most famous glaciers. Land at the head of one and view the incredible sight of this frozen river as it winds its way through ancient carved valleys. Should weather not be suitable to take this flight you are able to transfer your booking onto a similar tour on any of the Helicopter Line's operations in Queenstown or Mt Cook.

### Your accommodation: Punga Grove Motel & Suites

Punga Grove is right in the heart of Franz Josef Glacier village and offers affordable and stylish accommodation in a beautiful rainforest setting.



## Day 24



### Franz Josef to Greymouth Train Station

Today head north along the mighty West Coast highway you pass through ancient temperate rainforests while getting sneak peeks of the wild coast beach occasionally. Whataroa is the next town where you can see one of the world's rarest birds, the New Zealand white heron or Kotuku nest at the Waitangi Roto Nature Reserve, and guided tours from October to March will take you there.

Ross is the site of an old gold mining town and some of the old buildings and workings remain. In fact, Ross is still home to one of the few working gold mines left in New Zealand and the local information center offers you the chance to pan for gold.

Hokitika is a great place to explore craft and gift stores and head to the coast and take in the endless sea views. The Jade or Greenstone on offer in Hokitika is probably some of the best you will see in the country. The Hokitika Gorge is located 45 minutes inland and offers turquoise waters flowing through a narrow gorge. A great short walk will deliver you to this piece of paradise.

Continue on to Greymouth, the largest town on the West Coast and the starting point for the next leg of your journey the TransAlpine Scenic Train. Drop your rental car at the Greymouth Train Station depot located at the train station building before boarding your train to Christchurch.



## TranzAlpine Scenic Train: Greymouth to Christchurch

Considered one of the world's great train journeys, the TranzAlpine Scenic Train takes you from Greymouth to Christchurch. You'll travel across the South Island from the west to the east coast through Arthur's Pass National Park. From the comfort of your carriage see lush beech forest, deep river valleys and the spectacular peaks of the Southern Alps. Descend to the windswept Canterbury Plains before arriving in the city of Christchurch.

---

### Shared Transfer from the Railway Station to a City Hotel with Christchurch Touring

On arrival at the Christchurch railway station, you will be met by a driver and transferred to your Christchurch accommodation.

---

### SUGGESTED ACTIVITY - TranzAlpine Scenic Plus Addon - KiwiRail

Feel like luxurious service, exclusive meals, inclusive drinks and priority check in and boarding? The Scenic Plus add-on option is for you. Enjoy personal service with panoramic windows, spacious carriages and comfortable seating. The exclusive open-air viewing carriage is available if you feel like capturing the ultimate photo or simply wish to experience the great outdoors whilst travelling through the Southern Alps. Your food is prepared exclusively in a kitchen carriage, with paired drinks and a paddock to plate regionally inspired food menu all your senses will be fully engaged on this journey.

---

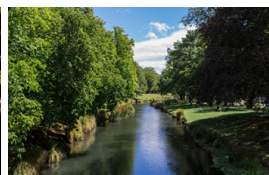
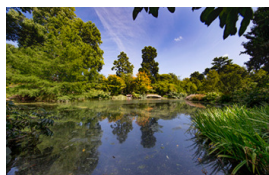
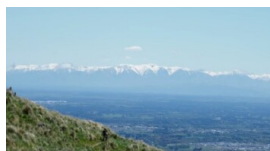
### Your accommodation: Bella Vista Christchurch

Bella Vista Motel Christchurch offers a great range of comfortable modern units with excellent facilities. Enjoy the convenience of being located in close proximity to the Christchurch CBD, shops, entertainment and other activities.



---

## Day 25



### Private transfer accommodation to Christchurch Airport

A private transfer will collect you from your accommodation and transfer you to Christchurch Airport in time for your departing flight.

---

## Tour details

Departures:	Daily
Tour type:	Nationwide Self Drive
Starts:	Auckland
Finishes:	Christchurch
Tour length:	25
Accommodation:	Motels
Car/transport type:	

---

## Included activities

Includes	Private train station transfers
Includes	Private airport transfers
Includes	TranzAlpine Train from Greymouth to Christchurch
Includes	Interislander ferry crossing
Includes	Hole in the Rock Dolphin Cruise
Includes	Twilight encounter Waipoua Forest
Includes	Huka Falls Jet Boat Tour
Includes	Real Journeys Milford Sound Cruise

---

## Accommodation summary

Day 1	Sudima Auckland City
Day 2	Opononi Hotel
Day 3	Sea Spray Suites
Day 4	Sea Spray Suites
Day 5	Snells Beach Motel
Day 6	Bella Vista Rotorua
Day 7	Beechtree Motel
Day 8	CityLife Wellington
Day 9	Bella Vista Blenheim
Day 10	The White Morph, Kaikoura
Day 11	Bella Vista Christchurch
Day 12	Bella Vista Christchurch
Day 13	Peppers Bluewater Resort
Day 14	Mt Cook Motel
Day 15	Highfield Mews
Day 16	Motel on York
Day 17	Lakefront Lodge
Day 18	Lakefront Lodge
Day 19	Scenic Suites Queenstown
Day 20	Scenic Suites Queenstown
Day 21	Clearbrook Motel and Serviced Apartments
Day 22	Punga Grove Motel & Suites
Day 23	Punga Grove Motel & Suites
Day 24	Bella Vista Christchurch