



Grand New Zealand

Explore the best of New Zealand, from Auckland's vibrant cityscape and the tropical Bay of Islands to the cultural highlights of Rotorua and Wellington. Cross the Cook Strait to Marlborough's stunning landscapes, encounter Kaikōura's wildlife, and journey through the majestic Southern Alps to Aoraki/Mt Cook National Park. Highlights include the breathtaking Milford Sound, the adventure capital of Queenstown, the West Coast Glaciers, and a scenic return to Christchurch on the world-famous TranzAlpine Train. A journey of natural beauty and cultural wonders!



Starts in: Auckland
Finishes in: Christchurch
Length: 23days / 22nights
Accommodation: Motels
Can be customised: Yes

This itinerary can be customised to suit you perfectly. We can add more days, remove days, change accommodations, mix it up, add activities to suit your interests or simply design and create something from scratch. Call us today to get your custom New Zealand itinerary underway.



Inclusions:

Includes: Late model rental cars

Includes: Unlimited kms

Included activity: Private Transfer Auckland Airport to your Auckland Accommodation with Tourcorp

Included activity: The Visitor Promise - Cultural Learning Course

Included activity: Milford Sound Cruise with Real NZ - Lunch Included

Included activity: TSS Earnslaw Cruise and Walter Peak Gourmet BBQ Dinner

Included activity: TranzAlpine Scenic Train: Greymouth to Christchurch

Included activity: Private Transfer from Christchurch Accommodation to Christchurch Airport with Christchurch Touring Company

Included activity: Te Pā Tū Evening Māori Cultural Experience - Dinner Included

Included activity: Interislander Ferry Wellington to Picton

Includes: Fully inclusive rental car insurance (excess may apply)

Includes: Afterhours emergency support while touring

Included activity: Electronic Travel Guide and In-Country Support App

Included activity: Ocean's Cabin with Whale Watch Kaikōura

Included activity: Pure Wilderness Jet Boat with Fiordland Jet

Included activity: Off-Road Quad Bike Adventure Tour with Franz Josef Wilderness Tours

Included activity: Shared Transfer from Christchurch Train Station to Christchurch CBD Accommodation with Christchurch Touring Company

Included activity: Waitangi Treaty Grounds Guided Tour and Cultural Performance

Included activity: Mountain Jade - Highlights Tour

: 1 lunch, 1 special dinner



Day 1



Private Transfer Auckland Airport to your Auckland Accommodation with Tourcorp

You will be met at the Auckland airport by the driver and transferred to your Auckland accommodation.

Welcome to Auckland

Kia ora! Welcome to Auckland, known in Māori as Tāmaki Makaurau. Auckland is New Zealand's vibrant "City of Sails," and the country's largest metropolitan area. Nestled between the Pacific Ocean and the Tasman Sea, it offers something for everyone. Surrounded by native bush, lush rainforests, and pristine beaches, Auckland is a haven for both adventurers and urban explorers. Wander through world-class museums and galleries in the city centre or enjoy a peaceful retreat at the Auckland Gardens, where stunning landscapes showcase New Zealand's diverse flora. Stroll along the lively waterfront to savour fresh seafood and international cuisine at the Viaduct restaurants. For an unforgettable perspective, ascend the iconic SkyTower, New Zealand's tallest structure, and take in panoramic views of the city and its picturesque islands.

Your accommodation: Adina Apartment Hotel Auckland Britomart

Adina Apartment Hotel Auckland, Britomart is only minutes away from Queen's Wharf harbour in the heart of Auckland's CBD. Offering stylish, modern studio rooms and apartments, ideal for families, modern explorers or business travellers.



Day 2



Collect Rental Car

This tour's from price includes an intermediate-sized vehicle, setting you up for comfortable travels. Yet, we understand every adventure is unique! Feel free to select the perfect wheels from our incredible collection of rental cars, spanning from economy hatchbacks to premium SUVs.

Car Instructions

On collection of your rental car, you will be required to sign a rental agreement and provide a credit card for a security bond authorisation. Remember, the bond is only authorised, not charged, at this stage. While your rental rate may include coverage for mechanical breakdowns (please verify your specific car inclusions), you may also have the option to purchase roadside assistance for non-mechanical issues. All drivers must present a physical credit card, valid driving license and passport to be added to the agreement, with potential additional charges for extra drivers. Debit cards may be used on select vehicles. If you are presenting an international drivers license, this must be accompanied by the original domestic license. Drivers under 21 are not permitted, and those aged 21-24 may face a surcharge, both payable directly to the rental company. For detailed information, please refer to your rental car inclusions. See this important information if you are traveling between the North and South Islands on the ferry

Explore Auckland

Perched on the edge of a large natural harbour, New Zealand's "City of Sails" offers the best of both worlds. Sandy beaches, native bush and lush rainforests give way to a vibrant urban culture, humming with life. Spend time in the Viaduct Harbour, try your hand at sailing an America's Cup yacht or take the ferry to nearby Waiheke Island for a gourmet food and wine experience. If you're looking for a lovely walk, venture to the top of Auckland's highest volcano, Mt Eden, and take in soaring views of the gulf or hop on the short ferry to Rangitoto Island and hike to the top of the volcanic island. Immerse yourself in nature's beauty at the expansive Auckland Botanical Garden's, sprawled across 156 acres of lush land and native forest on Hill Road. Pack a picnic, soak up the sunshine, and delight in the melodious birdsong during a peaceful lunch. Head up to the Sky Tower, standing at just over 300m tall (about 1,000 feet) and have a meal in the 360-degree revolving restaurant. Scale the outermost perimeter of the Harbour Bridge or test your stomach and bungee off both. To end your day, catch a cab to Ponsonby Road and sample some upmarket culinary delights.

SUGGESTED ACTIVITY - Harbour Sailing Cruise with Explore

Enjoy the City of Sails from the water on a relaxed harbour sailing yacht. This cruise offers a uniquely local experience experiencing the harbour under sail with a small vessel with an intimate and engaging atmosphere. View the stunning city sights while sailing on the inner Waitemata Harbour. Sail where the wind takes us while enjoying Auckland's city highlights; including sailing under the Harbour Bridge and other well-known landmarks along the harbour's edge. The crew's local knowledge will give you the best harbour sailing experience Auckland has to offer. Become the crew and help participate with the sailing experience take the helm while you carve through the water, or if you prefer just sit back and relax above deck.

SUGGESTED ACTIVITY - Ferry from Auckland to Rangitoto Island and return with Fullers

A short cruise through the Waitemata Harbour to the Hauraki Gulf delivers you to Rangitoto Island. Rangitoto Island is the largest and youngest of the many volcanoes that make up the Auckland volcanic field. It erupted around 600 years ago, but is extinct now and safe to explore. During your cruise to and from the island enjoy fantastic views of Rangitoto Island and Auckland. On reaching the island you can walk to the summit (1 hour direct) for great views of the Hauraki Gulf and over Waitemata Harbour looking back towards Auckland. There are a number of walking trails to explore this volcanic island, further information can be found at the Department of Conservation website.

Your accommodation: Adina Apartment Hotel Auckland Britomart

Adina Apartment Hotel Auckland, Britomart is only minutes away from Queen's Wharf harbour in the heart of Auckland's CBD. Offering stylish, modern studio rooms and apartments, ideal for families, modern explorers or business travellers.



Day 3



Auckland to Paihia

The drive from Auckland to the Bay of Islands takes approximately 3.5 hours, but allow extra time to enjoy the sights along the way. Pause for a breath of fresh salty air in Whangarei, where you can explore scenic highlights like the Whangarei Falls or the lively Town Basin. Further along, take a break in Kawakawa known for its quirky, world-famous Hundertwasser Toilets. As you approach Paihia, the gateway to the Bay of Islands, soak in the stunning views of native bush and endless golden beaches that define this iconic Northland region.

Waitangi Treaty Grounds Guided Tour and Cultural Performance

Waitangi is one of New Zealand's most historic sites where the Treaty of Waitangi was signed in 1840 between the Māori and the British Government. This two day pass allows you access to the Treaty of Waitangi Grounds and includes admission to the Te Kōngahu Museum and Te Rau Aroha Museum and a Maori Cultural performance. During your guided tour, learn about the history of the treaty and discover the stories and events that shaped New Zealand. The cultural performance inside the carved meeting house includes waiata (singing), poi and the haka - a war dance Aotearoa-New Zealand is well known for.

Your accommodation: Sea Spray Suites

Sea Spray Suites offers comfortable and relaxing accommodation close to Paihia's best activities and attractions. Directly across the road is the beautiful Te Ti Beach, exploring Paihia's beautiful waters and wildlife is only a short step away. If you are interested in experiencing New Zealand's heritage, The Waitangi Treaty House is only 1km away.



Day 4



Explore Bay of Islands

Commonly known as the 'winterless north', New Zealand's Bay of Islands is made up of over 140 subtropical atolls. Renowned for its untouched beaches, abundant marine life, and idyllic climate, this tropical paradise ticks all the boxes. Spend some time on a remote stretch of beach, or see the dolphins on an ocean safari. If diving is your thing, take the morning to descend the Rainbow Warrior - The Greenpeace flagship sunk by French saboteurs in 1985. Wander around Russell, a whaling port founded in 1843. Learn about our culture in historic Waitangi, the site where The Treaty of Waitangi was signed in 1840 between the Māori and Europeans. Alternatively, you may like to take a day tour to Cape Reinga, the very top of the North Island.

SUGGESTED ACTIVITY - Hole in the Rock Cruise with Fullers GreatSights

Board your cruise and take in the stunning views as you glide out through the islands and along the Rakaumangamanga Peninsula to Cape Brett, where a historic lighthouse keeps watch over and Piercy Island/Motukōkako, or as it is popularly known as the Hole in the Rock. According to Māori legend, local warriors used to paddle through the Hole in the Rock in their canoes before departing for battle. Drops of water from the cave roof above were a good omen. If conditions permit, your skipper will expertly guide the ship through the narrow space. Keep an eye out for common and bottlenose dolphins, whales, and other marine life during your cruise, and have your camera ready as you get up close to the action. Stop off at Otehei Bay on Urupukapuka Island where you have time to relax, take a walk, have a swim, or enjoy a bite to eat and drink from the on-site fully licensed cafe. The purpose-built catamaran is licensed by DOC (the Department of Conservation) for dolphin viewing and the crew has years of experience locating dolphins in these waters.

SUGGESTED ACTIVITY - Cape Reinga Scenic Flight and Guided Tour with Salt Air

Experience the beauty of the North from both air and land. Take a spectacular scenic flight to Cape Reinga over Whangaroa Harbour and the Rangaunu Harbour as well as Coopers Beach, Doubtless Bay and Ninety Mile Beach.

SUGGESTED ACTIVITY - Ngawha Springs

Bathe in the healing waters at Ngawha Springs and let the ancient energy revitalise your senses while the minerals from deep in the earth permeate your body. The mineral-rich hot waters of Ngawha Springs bubble up from deep within the Earth. Nestled in the heart of Te Tai Tokerau, Northland, the springs have a long history of being a restorative and healing place to visit. The people of Ngapuhi have attended the natural springs to replenish wairua (spirit), alleviate the sensation of pain, and repair common ailments.

Your accommodation: Sea Spray Suites

Sea Spray Suites offers comfortable and relaxing accommodation close to Paihia's best activities and attractions. Directly across the road is the beautiful Te Ti Beach, exploring Paihia's beautiful waters and wildlife is only a short step away. If you are interested in experiencing New Zealand's heritage, The Waitangi Treaty House is only 1km away.



Day 5



Paihia, Bay of Islands to Snells Beach via Waipoua

From the Bay of Islands you will head west, leaving the Pacific Ocean for the wilder shores of Hokianga and the Tasman Sea. Small towns Omapere and Opononi are reminiscent of days gone by with a vintage seaside feel and are the perfect place to stop for an ice cream in a hot day. To the south is the Kauri coast, which you're about to explore. Head south into the Waipoua Forest, home to giant Kauri trees. Allow time for one of a number of short walks available in the area. Not to be missed is the five minute loop to view the largest Kauri in New Zealand, Tane Mahuta. Backtrack cross-country to the Matakohu Kauri Museum an award winning museum with extensive historical displays. Continue on the road to Snells Beach, a lovely little township close to Warkworth. If you arrive in plenty of time, head into Matakana Wine Country for some great dining options. Another must do while you're here is a day excursion to one of many deserted beaches in the Tawharanui Marine Reserve.

Your accommodation: Snells Beach Motel

Snells Beach Motel is perfectly situated, on the Mahurangi East Peninsula, overlooking the beautiful Kowhai Bay and in the heart of the wonderful Matakana Coast Wine Country area.



Day 6



Snells Beach to Rotorua

Continuing south through Auckland, State Highway 1 quickly takes you into rolling green farmland and the rich dairy pasture of the Waikato. The Bombay Hills mark the outer boundary of the greater Auckland area and its here you turn inland to central Waikato. This is hobbit country and the route takes you through the town of Matamata where you can still visit the film locations made famous in the Lord of the Rings trilogy at Hobbiton Movie Set and Farm Tours. Continuing on you'll pass several small farming communities before telltale signs of steam and other geothermal activity signal your arrival into Rotorua.

Rotorua

Discover the geothermal, adventure, and cultural wonderland of Rotorua. As you explore, you may see steam rising from cracks in the road, bubbling and hissing water in pools along the lake's edge, and the unmistakable smell of Sulfur. Rotorua is rich in Māori culture and history, with many Māori inhabitants recognising the great potential of the volcanic land. For an outdoor adventure, head to The Redwoods and experience the rainforest treetops from high up. There are a few accessible trails for disabled hikers and great biking trails as well. If you're lucky, you might spot some of New Zealand's native birds, such as the Pīwakawaka (Fantail) and the Tūī. Alternatively, enjoy the Lake Tikitapu Blue Lake Walk or explore Kuirau Park, where you'll find bubbling mud pools and steaming lakes. Don't miss the private thermal reserves such as Te Puia and Wai-O-Tapu, where you can walk among bubbling mud pools, spouting geysers, and Sulfur ponds. Just a few minutes from the town centre, the Agrodome and National Kiwi Hatchery offer an insight into nature. Rotorua's rich Māori culture is a must-see. Spend an evening with Te Pā Tū, complete with a traditional-style dinner or stroll along the lake edge to reach one of the country's oldest Māori villages at Ohinemutu. When hunger strikes, visit Eat Street in Rotorua CBD, a vibrant street lined with delicious eateries and restaurants to satisfy any craving. No visit to Rotorua would be complete without experiencing Rotorua's original tourist attraction - a relaxing spa treatment. This town boasts an array of wellness experiences to unwind in. Whether you are seeking adventure, culture, or relaxation, Rotorua offers an unforgettable experience.

Te Pā Tū Evening Māori Cultural Experience - Dinner Included

New Zealand's Most Awarded Cultural Attraction, presenting Te Pā Tū. Feast on song, drama, tradition, and divine seasonal kai (cuisine) within the forest Pā (village) blanketed by towering Tawa trees, blazing bonfires, and a forest-formed amphitheatre. Te Pā Tū shares Māori history, traditions, and cultural aspirations across 4-hours of celebration and feasting. These events change with each season of the Maramataka, the Māori lunar calendar.

Your accommodation: Silver Fern Suites & Spa

Silver Fern Suites & Spa is located just minutes from Rotorua's city centre and is close to popular thermal attractions, cafes, restaurants and golf courses. Suites have a private spa pool or double spa bath for you to unwind and relax.



Day 7



Explore Rotorua

Peppered with natural hot springs, boiling mud pools and steaming geysers, Rotorua sits within one of the world's most active volcanic regions. Geothermal landmarks aside, this city of sulphur has a rich indigenous history. Home to several prominent Māori tribes, a visit to one of the Māori experiences should be high on your agenda, learn about the special meaning of pounamu-Greenstone with Mountain Jade, explore the geysers and arts of Te Puia or immerse in an evening with Te Pā Tū. An excursion to one of the area's wellness spas is also a must! Try the Polynesian Spa for an invigorating soak in its natural mineral hot springs, Wai Ariki offers an indulging and unwinding restorative journey or pay a quick visit to Secret Spot for a soak and a delicious smash burger!

If it is a thrill you are looking for, spike your adrenaline at Rotorua Canopy Tours, soaring above the ancient native forest below. Alternatively, head up the Skyline Rotorua Gondola for soaring lake views, and ride the luge at night for an extra thrill.

Make the most of your time in Rotorua with an excursion through the Wai-O-Tapu Thermal Wonderland, one of the area's most colourful volcanic attractions. Whatever you are after, Rotorua is almost certain to have it!

Mountain Jade - Highlights Tour

This 30-minute highlights tour is a rare opportunity to spend time with New Zealand Jade artists. New Zealand Jade known as Greenstone, but more commonly known in New Zealand as Pounamu has a rich history within Maori culture. The expert guide will show you the intricate process of Pounamu carving firsthand in the Mountain Jade studio. The local artist will be there to personally demonstrate the carving process and share their stories and knowledge with you. To top off the tour, you will get to select your very own piece of Pounamu and learn to string it yourself so you can take it home.

SUGGESTED ACTIVITY - National Kiwi Hatchery Experience

The National Kiwi Hatchery Experience is a special opportunity to gain insight into and view this highly regarded conservation centre. Developed with the visitor experience in mind, the hatchery boasts special viewing opportunities and is hosted by kiwi expert guides who ensure guests leave fully informed and all questions answered. Learn all about New Zealand's intriguing national icon and the efforts of the kiwi husbandry team, see and discover what it takes to hatch and rare chicks, and if you're lucky see baby chicks in person!

SUGGESTED ACTIVITY - Mount Tarawera & Orakei Korako Thermal Explorer with Volcanic Air

Combine the thrill of landing on Mount Tarawera with a flight that includes spectacular aerial views of Rotorua's stunning crater lakes, the renowned Tarawera Falls and the vibrant Waimangu and Wai-O-Tapu geothermal reserves. Leaving Wai-O-Tapu, descend to follow the Waikato River to the hidden valley of Orakei Korako. Once landed, you will ferry across the river and begin your land-based tour. Experience hot springs, gushing geysers and the natural beauty of this geothermal wonderland. The return flight takes in views of farmland and the Paeroa mountain range before flying over Rotorua City and returning to the lakefront pier.

SUGGESTED ACTIVITY - Original Ziplining Experience with Rotorua Canopy Tours

Embark on a three-hour adventure through the native New Zealand forest. Journey through the beautiful forest canopy via an incredible network of trails, tree platforms, Ziplines and swing bridges. See breathtaking views of the woodland valleys and hills as you fly through tight openings in the trees. In between the thrill of the ziplines and suspended tree bridges, your guides will share their passion and knowledge for the forest and the conservation challenges to preserve it. It is important you read and understand the risks associated with this activity. For more information see [here](#).

Your accommodation: Silver Fern Suites & Spa

Silver Fern Suites & Spa is located just minutes from Rotorua's city centre and is close to popular thermal attractions, cafes, restaurants and golf courses. Suites have a private spa pool or double spa bath for you to unwind and relax.



Day 8



Rotorua to Wellington

The drive from Rotorua to Wellington takes you via the township of Taupō home to New Zealand's largest lake. Following the lakeshore South you'll pass Turangi and then ascend the central plateau onto the high country Rangipo Desert. Skirting the edge of Tongariro National Park, you'll reach the military town of Waiouru before descending through rich farmland and the rural towns of Taihape and Mangaweka. Follow the coast through Paraparaumu, Paekakariki and Plimmerton to arrive at your destination, Wellington.

Your accommodation: Adina CityLife Wellington [Formerly Heritage CityLife Wellington]

Adina CityLife Wellington is a suite style hotel with every amenity required for a comfortable stay, as well as being in a superb location to explore the compact city centre. Situated on Lambton Quay, you'll find the best shopping, tourist attractions and cultural landmarks all within easy walking distance.



Day 9



Interislander Ferry Wellington to Picton

The 92 km journey between Wellington and Picton takes around 3 hours and has been described as 'one of the most beautiful ferry rides in the world'. Leaving Wellington Harbour the ferry passes many interesting points such as Pencarrow Head on top of which is New Zealand's oldest lighthouse (1859). Red Rocks is home to a seal colony and Oterangi Bay is the site which recorded the country's highest ever wind speed of 268 kph (167 mph).

From the Cook Strait spectacular views of the Kaikōura Ranges on the South Island can be enjoyed and dolphins and many sea birds are often seen. Around one hour of the cruise takes you through the Marlborough Sounds and this region of bush covered mountains, small islands, crystal clear waters and secluded bays offer remarkable photographic opportunities. The final leg of the cruise travels through Queen Charlotte Sound before coming to an end in the picturesque town of Picton.

Collect Rental Car

This tour's from price includes an intermediate-sized vehicle, setting you up for comfortable travels. Yet, we understand every adventure is unique! Feel free to select the perfect wheels from our incredible collection of rental cars, spanning from economy hatchbacks to premium SUVs.

Picton to Blenheim

It is a short 30 minute drive, as you'll follow the valley south to arrive in Blenheim, located in the heart of Marlborough - New Zealand's largest wine producing region. Go through acres of leafy green vines and marvel at the magnificent 'dry hills' of Marlborough in the distance.

SUGGESTED ACTIVITY - Half Day Marlborough Wine Tour with Sounds Connection

An afternoon among the vines! Be immersed in the Marlborough wine country with the Sounds Connection half day wine tour. Get collected from your accommodation and taken through three or four hand-picked wineries to taste the award-winning produce this region is known for. Hear about the history of winemaking in Marlborough as well as learning the unique processes each winery goes through.

Your accommodation: Blenheim Palms Motel

Located 100 m from the central shops and eateries, the Blenheim Palms Motel offers tasteful individually designed apartment-styled rooms.



Day 10



Blenheim to Kaikōura

Cross Marlborough and head towards one of the most spectacular coastlines of the South Island, the Kaikōura Coast. The road hugs the shore for around 50 kms and offers many chances to view native wildlife. To the east is the South Pacific Ocean and to the west the towering Kaikōura Ranges. Kaikōura Township is a bustling little place with many cafes, restaurants and shops, but the main reason for visiting here is the wildlife and it's one of the only places in New Zealand you can see whales year round.

Your accommodation: The White Morph, Kaikōura

Set on the Esplanade in Kaikōura, The White Morph enjoys commanding views of the ocean and mountains. Just a 10-minute walk into town, The White Morph has been beautifully placed so that you can take in the spectacular scenery of Kaikōura while enjoying the variety of attractions on offer.



Day 11



Ocean's Cabin with Whale Watch Kaikōura

Experience New Zealand's only marine-based whale-watching company. Whale Watch Kaikōura offers a once-in-a-lifetime, up-close encounter with the giant Sperm Whale. You are also likely to encounter New Zealand fur seals, dolphins, and albatross. Depending on the season you may also see Pilot, Blue, and Southern Right whales as well as migrating humpbacks. Often orcas can be spotted here and the world's smallest dolphin, the Hector's, occasionally makes an appearance.

Kaikōura to Christchurch

Travel down the coast before heading inland through the North Canterbury wine region - the Waipara Valley. If you've time on your hands we recommend taking a detour to Hanmer Springs for relaxing dip in its thermal pools. Arriving into Christchurch you'll see a new and improved city, steadily rising from the ruins of the 2011 and 2010 earthquakes.

SUGGESTED ACTIVITY - Albatross Tour with Encounter Kaikōura

A world renowned marine reserve, Kaikōura is brimming with marine life and ocean-going birds. It is the Albatross capital of the world and has up to 14 different species visiting the area throughout the year. You'll be taken by boat, 15 minutes off the coast where a huge range of elusive and usually inaccessible albatross can be sighted. You'll also see penguins, gannets, skuas, shearwaters, petrels and terns. Travel in a dedicated albatross encounter vessel, adapted specifically for maximum wildlife viewing opportunities.

SUGGESTED ACTIVITY - Zipline & Native Forest Tour with EcoZip Kaikōura

Enjoy a scenic journey to Kaikōura's beachfront airfield, followed by a 4WD adventure crossing the braided Kahutara River to Rakanui Station. Take in panoramic views of rolling farmland, lush valleys, and snowcapped mountains before embarking on an exhilarating 5-zipline course, including twin lines for side-by-side rides. Learn fascinating local history from expert guides and enjoy a walk through native forest, with a chance to plant a tree during winter as part of Eco Zip's conservation program. An unforgettable eco-adventure awaits! It is important you read and understand the risks associated with this activity before travel. For more information, please see [here](#)

Your accommodation: Quest on Cambridge

Quest on Cambridge serviced apartment-style hotel rooms offer guests a relaxed and comfortable Christchurch accommodation experience. Each room has an open-plan living area, a fully equipped kitchen, and natural light. Quest on Cambridge is a short walk from the south shopping centre and to the Botanic Gardens.



Day 12



Explore Christchurch

Following earthquakes that razed its centre and much of the outlying suburbs, Ōtautahi-Christchurch is well into a billion-dollar makeover. In the middle of the Canterbury Plains, bordering the Pacific Ocean, New Zealand's newest city is an ideal gateway to exploring the middle of the South. Go punting on the Avon River, take a historic tram ride, catch the gondola to the rim of an extinct volcano or do all three! See the world's only Cardboard Cathedral and for nature enthusiasts - wander the renowned Christchurch Botanic Gardens, or head to Oxford Terrace in the city to find a great spot to eat or drink. Drive an hour in any direction to ski, mountain bike, wine taste, whale-watch, bungee jump or play golf. Take the winding Port Hills road to the French settlement of Akaroa & Banks Peninsula and tour the vines in Waipara for an authentic New Zealand wine-tasting experience.

SUGGESTED ACTIVITY - Discover Christchurch Afternoon Tour

A half-day sightseeing tour of Christchurch highlighting both the damage to the city inflicted by several large earthquakes in 2010 and 2011 and the rebuild which is currently in progress, together with the surviving beauty of the city and the historical landmarks. Experience the grand architecture, beautiful gardens, and scenic viewpoints on a half-day city tour of Christchurch.

SUGGESTED ACTIVITY - International Antarctic Centre General Admission

The International Antarctic Centre aims to recreate the atmosphere and environment of Antarctica, providing visitors with an interactive, fun, and educational experience. Feel the full Four Seasons of Antarctica, where you'll experience a custom-built snow and ice experience, then warm up in the Scott Base interior exhibit, a replica Antarctic field camp, or other informative displays in the gallery. You'll also learn about life in modern-day Antarctica, view real little blue penguins, and experience a thrilling ride in a Hagglund all-terrain vehicle.

SUGGESTED ACTIVITY - Christchurch Triple Pass - Tram, Punting and Gondola

Experience three of Christchurch's iconic attractions in one day: the Christchurch Tram, Christchurch Gondola, and Punting on the Avon River. The historic tram is a delightful way to explore the evolving inner city, taking in the various sights with the hop-on hop-off pass and learning about the city from the live commentary. You'll also enjoy a bird's eye view of Christchurch and the Canterbury region including the distant peaks of the Southern Alps when you ride the gondola cableway to the top of the Port Hills in Heathcote Valley. Punting on the Avon River takes you through the city's green belt: a relaxing way to explore what is affectionately known as the 'Garden City'.

Your accommodation: Quest on Cambridge

Quest on Cambridge serviced apartment-style hotel rooms offer guests a relaxed and comfortable Christchurch accommodation experience. Each room has an open-plan living area, a fully equipped kitchen, and natural light. Quest on Cambridge is a short walk from the south shopping centre and to the Botanic Gardens.



Day 13



Christchurch to Aoraki-Mt Cook National Park

Drive through the heart of the South Island, crossing the vast Canterbury plains. Catch your breath in Geraldine before continuing through Fairlie. Ascending Burkes pass you'll come to the picturesque town of Lake Tekapo. Follow the road and take in the view of Aoraki-Mt Cook (New Zealand's tallest mountain) from the shores of Lake Pukaki, known for its glacier fed turquoise blue colour. Continue along the lake to your final destination Aoraki-Mt Cook Village.

SUGGESTED ACTIVITY - Glacier Explorers

Experience 500-year-old icebergs up close on the Aoraki-Mt Cook terminal lake. The Glacier Explorers tour is the only one of its kind in New Zealand and one of only three in the world! Very few glaciers terminate into lakes and even fewer of them are accessible. See towering ice cliffs and floating icebergs from the safety of a specially designed boat. These boats provide a safe way to view unseen and inaccessible areas of New Zealand's largest glacier The Tasman.

SUGGESTED ACTIVITY - Sir Edmund Hillary Alpine Centre Museum and Theatre Explorer Pass with Hermitage

A tribute to New Zealand's Sir Edmund Hillary, a humanitarian, ambassador, and one of the world's greatest explorers. The centre showcases the Aoraki Mount Cook region, the history of climbing, and early transport used throughout the region. This comprehensive museum details the life of Sir Edmund Hillary, the Hermitage, and provides access to the 126-seat custom-designed theatre. Check out the daily film schedule which includes 3D Movies, documentaries, and 360-degree digital dome features.

Your accommodation: Mt Cook Motel

Mt Cook Motel, nestled in the heart of Mt. Cook Village, offers spacious self-contained units that provide comfort and convenience. Each unit is surrounded by breathtaking alpine mountain views, making it the perfect retreat for nature lovers and adventurers alike.



Day 14



Aoraki Mt Cook National Park to Dunedin

Leave Aoraki Mt Cook National Park and travel past Twizel, one of the locations for the Lord of the Rings films. Go through Omarama, the gliding capital of New Zealand. Continue down the Waitaki Valley follow the hydro power generating system to the rural town of Kurow, home to the divine Valli Wines. Stop for a sip or continue on to the east coast. Stretch your legs in Oamaru, known for its white stone buildings constructed with the local Oamaru Stone and Steampunk influence. If you were a little late off the mark this morning you may get the chance to see the blue penguins come ashore at dusk. Continue south down the coast to Moeraki, and take a detour towards the beach to see the Moeraki Boulders, a unique geological feature well worth a look. As you arrive in Dunedin, take in the city's Edwardian and Scottish heritage reflected in the buildings around the city centre The Octagon.

SUGGESTED ACTIVITY - Speights Brewery Tour

Founded in 1876, the Speights Brewery still occupies its original Dunedin site - with several of its buildings dating back to the late 1800's. One of the only remaining 'gravity breweries' in the world, this 60-minute tour explains its inner workings. There is an opportunity to taste six different beers as well as bottle, cap and brew your own personal Speights Gold Medal Ale - the brewery's flagship beer.

SUGGESTED ACTIVITY - Larnach Castle and Gardens

Larnach Castle, New Zealand's only castle, was built in 1871 by politician and merchant William Larnach, a visionary who played a key role in shaping the country's early history. Constructed for his beloved first wife, Eliza, the castle's shell took 200 workmen three years to complete, followed by twelve years of intricate interior craftsmanship. Perched high on the Otago Peninsula, the castle offers stunning views over Dunedin City. Its gardens hold International Garden of Significance status and feature a unique collection of antiques, including a rare nine-piece Totara knot suite. The Ballroom Café provides the perfect spot to relax and enjoy refreshments while reflecting on your visit. The ballroom itself has a fascinating history, having once served as an asylum, an antique sales room, and even a sheep pen before its beautiful restoration. With a self-guided tour, you can explore the castle and gardens at your own pace.

Your accommodation: Motel on York

Motel on York is located in the heart of Dunedin city. The property offers superior accommodation only 300 metres away from cafes and restaurants.



Day 15



Explore Dunedin and the Otago Peninsula

Known as the Edinburgh of the South, Dunedin City has a heavy Scottish influence. Surrounded by rugged coastal plains and windswept beaches it's home to an eclectic mix of historical and modern architecture as well as industrial technology. Renowned for its Flemish Baroque-inspired 'gingerbread house' Railway Station, this university town is bustling with life. Head to the Saturday farmers market held in the aforementioned railway grounds for a taste of organic produce, handmade crepes and local honey. Explore the many cafes and wine bars in The Octagon, then continue on a self-guided walking tour of the internationally acclaimed Street Art dotted around the city. Drive to the coast and watch the freighters passing in the distance while you sunbathe, or hire a mountain bike and test your legs on one of the many trails available in the area. For a more immersive historical experience, follow the coast to New Zealand's only castle, Larnach Castle. On your way back be sure to head to the Otago Peninsula to see the largest mainland Albatross colony in the world.

SUGGESTED ACTIVITY - Castle to Cruise Tour and Penguin Experience with Monarch

Today you'll explore the wildlife and history of the Otago Peninsula. You'll be welcomed to the MV Monarch for a wildlife cruise around Taiaroa Head, home to the world's only mainland nesting site for royal albatross. Scattered along the rocks you'll also see fur seals basking in the sun and possibly sea lions on the beach. In the water, you may also see penguins, dolphins, and other marine birds. Back on land, you'll take a guided tour of New Zealand's only castle, Larnach Castle built in 1871. Learn of the scandals and history of the castle and explore the beautiful garden of international significance. Your final stop of the day is to The Otago Peninsula Eco Restoration Alliance (formally Penguin Place), a natural nesting site for the rarest penguin in the world, the Yellow Eyed Penguin.

SUGGESTED ACTIVITY - Wildlife Peninsula Encounter Tour and Wildlife Cruise with Monarch

Join a small-group bus tour led by a local guide across the Otago Peninsula, featuring stunning harbour views, rural landscapes, and unique wildlife. Visit a remote beach to spot sea lions, take a Monarch Wildlife Cruise to see albatross, seals, and rare seabirds, and explore a Yellow-eyed Penguin conservation reserve with hidden viewing hides. This unforgettable journey blends breathtaking scenery with intimate wildlife encounters before a relaxed return to Dunedin.

Your accommodation: Motel on York

Motel on York is located in the heart of Dunedin city. The property offers superior accommodation only 300 metres away from cafes and restaurants.



Day 16



Dunedin to Te Anau (via Invercargill)

The drive to Te Anau takes you through classic Southland farming scenery. Head off-the-beaten-track today and follow the coastline instead of the inland route. Go through The Catlins area and be sure to take a detour to Kaka Point to view its majestic cliffs and pounding surf. If time permits, keep driving towards Nugget Point, iconic for its steep headland with a lighthouse perched atop. Continue through Invercargill to Riverton and Colac Bay, and then head north to Manapouri. From here you can embark on a day or overnight cruise to the remote Doubtful Sound, renowned for its natural beauty. Just a short way further will bring you to your lakeside destination of Te Anau, gateway to Fiordland National Park and Milford Sound.

Te Anau

It is the gateway to Fiordland National Park and a perfect base to visit Piopiotahi-Milford Sound. The Milford Road originates here, and this is arguably one of the most scenic stretches of highway in the country. Te Anau sits on the shores of spectacular Lake Te Anau, which reaches depths of 417 meters. Te Anau Township is the starting point for many walking tracks, including two of New Zealand's Great Walks, the Milford track and the Kepler track. Apart from hiking, you could go kayaking, lake cruising, fishing, or exploring Te Anau Glowworm Caves. You could go for a bike ride alongside the lake towards Lake Manapouri, on a popular Lake to Lake biking route. Along the way, you will pass a bird sanctuary specialising in Takahe, and other native birds.

SUGGESTED ACTIVITY - Te Anau Glowworm Caves with RealNZ

Begin your Te Anau Glowworm experience with a scenic cruise across Lake Te Anau on board the luxury catamaran, Luminosa, to the western side of the lake. On arrival, you'll enter the caves through Cavern House, where informative displays detail the history of this 12,000 year old underground network. You'll then explore by limestone pathway while your guide points out hidden whirlpools, sculpted rock formations, and a rushing underground waterfall. See a magical display of thousands of glowworms as you glide through the darkness in a small boat.

Your accommodation: Lakefront Lodge

Stylish self-contained motel units less than a minute walk from Te Anau Lakefront. Enjoy a close walk to shops, cafes and restaurants.



Day 17



Te Anau to Milford Sound, returning to Te Anau

The magnificent Milford Road leading to Milford Sound offers some of the most beautiful and iconic scenery in the country. Countless photo opportunities mean this drive should not be rushed. From crystal clear lakes and towering mountains to lush glacier-formed meadows, this area is abundant with picture-perfect scenes. Continue on through the Homer Tunnel, an engineering marvel at 1219 meters long. Arriving in the village of Milford, you will be greeted with an amazing view of Mitre Peak. A day cruise into the heart of the sound is not to be missed. You'll learn about how this magnificent area was formed and experience the wonder of the falls that line the Fjord before back-tracking the way you came.

Milford Sound Cruise with Real NZ - Lunch Included

Get up close and personal with Milford Sound on a leisurely cruise of this spectacular fiord. From thundering waterfalls to sky-high mountains to lush rainforests, Milford has it all. Experience the spray of a waterfall as you cruise close to sheer rock faces. Informative, participative and relaxed, this is the perfect way to experience Milford Sound to the fullest.

Your accommodation: Lakefront Lodge

Stylish self-contained motel units less than a minute walk from Te Anau Lakefront. Enjoy a close walk to shops, cafes and restaurants.

Meals included: Lunch



Day 18



Pure Wilderness Jet Boat with Fiordland Jet

Jet boat down the Waiau river, across Lake Manapouri, to the ancient forest of the Fiordland National Park. Enjoy the thrill of jet boating down the majestic trout-filled Waiau River, to the serene Lake Manapouri. Step foot into the Fiordland National Park and go for a short walk while learning about the ancient beech forest and ferns. Your jet boat ride includes a number of stops at the exact locations of the filming the "Fellowship of the Ring" on the Waiau or "Anduin River". The driver will tell you the inside story of the filming the Lord of the Rings on this river. The trip will also include some thrilling 360 degree turns and spins as well as interesting interpretation about the flora and fauna and the local European and Māori history.

Te Anau to Queenstown

Journey across expansive tussock lands en route to Queenstown. Pass through Mossburn, renowned as the deer capital of New Zealand, and continue through the picturesque Southland countryside. As the road begins to trace the edge of Lake Wakatipu, marvel at the breathtaking views from the Devil's Staircase. Finally, approach Queenstown, the adventure capital of New Zealand, with the Remarkables mountain range standing majestically in the backdrop.

Queenstown

Queenstown known in Māori as Tāhuna, is home to many adrenaline-inducing activities. Nestled on the shores of Lake Wakatipu, this alpine town has very distinct seasons, and most adrenaline-filled activities can be accessed year-round. Queenstown is home to jet boating, bungee jumping, rafting, skydiving, paragliding, and even indoor thrills. If you want that rush - head out on the Shotover Jet, dive off the Nevis Bungy, freefall on the Canyon Swing, or Zip line the Gondola. While arguably the brightest gem in New Zealand's crown, Queenstown offers far more than an action-packed getaway. If you're looking for a slightly slower pace, there are plenty of recreational activities, including hiking and biking trails to explore, guided tours, boat cruises, scenic flights, or spa and wellness options to help you get away. Head to the lakefront, eat at one of the al fresco eateries, and soak up the local vibes; catch a ride on the iconic 100-year-old steamship the TSS Earnslaw; or take the Skyline Gondola and enjoy bird's-eye views of the Remarkables mountain ranges and Lake Wakatipu. Pack a picnic and go for a hike, only 20 minutes from Central Queenstown, Coronet Peak opens for summer sightseeing. You can ride the Peak Gondola to the top for panoramic views and hike the trails, or go for a bike ride on many excellent biking trails. In winter, Queenstown becomes a world-class winter resort, with four ski areas and a range of activities, bars, restaurants, and ways to relax and unwind.

TSS Earnslaw Cruise and Walter Peak Gourmet BBQ Dinner

Enjoy a quintessential Kiwi experience, a delicious gourmet BBQ buffet meal, and a farm demonstration in a stunning lakeside setting. Take in the stunning views of Lake Wakatipu and its surroundings as you cruise across the lake to the historic Walter Peak high country farm aboard the TSS Earnslaw Steamship. Enjoy the ambiance of the heart of the stately homestead while your Colonel's Homestead Restaurant chef prepares a gourmet BBQ dinner. Your seasonal menu includes an extensive selection of local New Zealand produce, including succulent meats and a selection of delicious vegetables and salads. Complete your meal with your choice of delicious desserts, or New Zealand cheeses. After dinner, watch the farm dogs in action with a sheep-herding demonstration and say hello to the other farm animals. Finally, cruise home under the southern stars and enjoy the fresh night air as the lights of Queenstown draw ever closer.

Your accommodation: Scenic Suites Queenstown

Scenic Suites Queenstown offers guests exquisite style and comfort, with a selection of rooms having spectacular views over Lake Wakatipu and the Southern Alps. The hotel prides itself on its 4-star hospitality that will make your stay in Queenstown even more memorable.

Meals included: Speciality Dinner



Day 19



Explore Queenstown

Well-known as New Zealand's 'adventure capital', Queenstown is home to a range of adventures, from the world's first and most famous bungy jumps to jet boat thrills, white-water rafting, and skydiving. However, Queenstown offers far more than a fast-paced, action-packed holiday. Settled on the shores of beautiful Lake Wakatipu beneath a soaring panorama of the Remarkables Mountain Range, this alpine town is surrounded by many historic, gastronomic, and scenic wonders. Take a stroll through the beautiful lakefront parks and gardens, browse through market stalls on weekends, dine in wonderful al-fresco restaurants, or ride on the 100-year-old historic Steamship - TSS Earnslaw to Walter Peak Station. Take the Queenstown Gondola up to Bob's Peak and soak up the panoramic views of the magnificent lake and mountain ranges. And after all of that, if you do want the adrenaline rush, Queenstown is known for taking your pick from the Shotover Jet, Canyon Swing, Zipline, Luge, or Heli-hike.

SUGGESTED ACTIVITY - Gondola and Buffet Dinner with Skyline Queenstown

With breathtaking views across Queenstown and Lake Wakatipu, the Skyline Complex is a must-do. Catch the fully enclosed gondola to the summit for a remarkable panorama of the city's surroundings. Wander the outdoor viewing decks then enjoy a gourmet buffet meal in the Stratosphere Restaurant.

SUGGESTED ACTIVITY - Dart River Safaris Funyaks

The best way to see, touch and feel the breathtaking Dart River valley. Jet boat for 1½ hours to the upper reaches of the Dart River, where visitors disembark and inflate their own canoe. After a full safety and paddling instruction, your Funyak journey begins. Paddle downstream on a glacier-fed river amidst rocky peaks and dense rainforests. Enjoy a sumptuous lunch and explore the Rock Burn Chasm and ancient beech forests. Paddle to Paradise then transfer to an awaiting back road coach for the return trip through Paradise. Funyaks is suitable for most ages with average fitness and no previous experience is required. It is important you read and understand the risks associated with this activity. For more information please see here.

SUGGESTED ACTIVITY - Appellation Boutique Wine Tour

Experience a tasting journey through three of Central Otago's incredibly scenic and varying wine sub-regions; Gibbston, Bannockburn and Cromwell. Visit three boutique vineyards, tasting their unique cool climate wines and discover why the Central Otago region has become world-renowned in its own right. Indulge at a fourth vineyard restaurant for a platter-style lunch, savouring the finest and freshest produce, accompanied with a wine flight.

There will also be an opportunity to retrace history when you stroll through the charming historical settlement of Old Cromwell.

Your accommodation: Scenic Suites Queenstown

Scenic Suites Queenstown offers guests exquisite style and comfort, with a selection of rooms having spectacular views over Lake Wakatipu and the Southern Alps. The hotel prides itself on its 4-star hospitality that will make your stay in Queenstown even more memorable.



Day 20



Queenstown to Franz Josef Glacier via Wānaka

From Queenstown you'll cross the Crown Range, the highest sealed road in New Zealand to arrive in the Alpine town of Wānaka, gateway to Mt Aspiring National Park. Skirting the shores of both Lake Wanaka and Hawea, you will enter the small town of Makarora. Stop at Blue Pools for a 1-hour return walk through the native beech forest to a glacier-fed swimming hole. Continue on through the remote seaside settlement of Haast before heading up the wild West Coast highway you pass through ancient temperate rainforests while getting sneak peeks of the wild coast beaches occasionally. Paringa Salmon Farm is worth a stop to stretch your legs, feed the fish, and stop for lunch and refreshments. Keep heading North and be sure to enjoy the view of the ever-changing towering snowcapped Southern Alps Mountain Range. Fox Glacier welcomes you first, then comes your destination for the night Franz Josef township.

Franz Josef

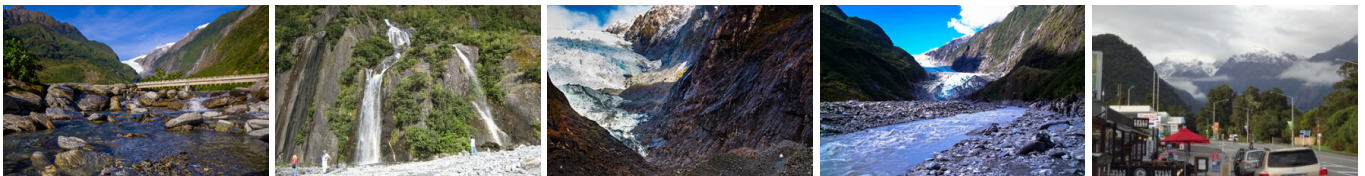
Franz Josef, named after both the local village and the nearby glacier, holds special significance in Māori culture as "Ko Roimata o Hine Hukatere" – The Tears of the Ice Maiden. This rare glacier is one of only three in the world that descends from alpine heights into a temperate rainforest, almost reaching sea level. New Zealand is home to two of these unique glaciers, Franz Josef and Fox Glacier, both highly accessible and popular with visitors. The best ways to experience the glacier are through scenic flights or, for the adventurous, a heli-hike. You can also enjoy glacier views with a short drive from the village and walking tracks. Beyond the glacier, Franz Josef offers a wealth of adventure activities and beautiful forest and alpine walks, making it a must-visit destination.

Your accommodation: Punga Grove Motel & Suites

Punga Grove is right in the heart of Franz Josef Glacier village stylish accommodation in a beautiful rainforest setting.



Day 21



Explore Franz Josef

Franz Josef is a small yet lively town in the heart of New Zealand's West Coast, best known for its spectacular 12 km-long glacier. The township is surrounded by lush, rainforest-clad mountains and has a vibrant atmosphere with plenty to explore. A variety of scenic walking trails offer incredible views of the glacier, but for a truly up-close experience, a licensed helicopter tour is the only way to set foot on the ice. Beyond the glacier, unwind in the rejuvenating Hot Pools or visit the West Coast Wildlife Centre to spot rare kiwi birds. If you're in the mood for a more relaxed day, the township is home to charming souvenir and gift shops, as well as great dining spots like SnakeBite Brewery and King Tiger. Whether you're chasing adventure or relaxation, Franz Josef is a stunning blend of wild beauty and welcoming hospitality.

SUGGESTED ACTIVITY - Franz Josef Glacier Helihiike with Franz Josef Glacier Guides

After a thrilling scenic flight, high above the rugged terrain, you will land on the glacier, ready to undertake a guided glacier hike. Your friendly guide will lead you through some of the most pristine and awe-inspiring glacial scenery in the world. Your guide will choose your route carefully as you go and, with an eye for the most spectacular ice formations, you'll soon be making your way through an extraordinary landscape of towering peaks and glistening blue ice. It is important you read and understand the risks associated with this activity prior to travel. For more information please see [here](#).

SUGGESTED ACTIVITY - Twin Glacier Scenic Helicopter Flight with The Helicopter Line

A spectacular scenic flight soaring over two of New Zealand's most famous glaciers, Fox and Franz Josef. Landing at the head of one and view the incredible sight of this frozen river as it winds its way through ancient carved valleys. It is important to read and understand the risks associated with this activity. A full risk disclosure can be found [here](#).

SUGGESTED ACTIVITY - Franz Josef Nature Tour with Glacier Valley Eco Tours

Nestled in thick historic West Coast forest and a stone's throw from wild black sand beaches, this is one of the world's most unusual glaciers. Beautiful blue skies or magical misty rain, whatever the weather - you will feel like you are in Narnia or LOTR.

With easy walking at your pace, information on glaciology, geology, geomorphology, flora and fauna, local legends, history, and small guided groups with fantastic guides, you will experience this glacier in style and in the best hands with the only local company. Wander past glacier rivers and streams and through beautiful podocarp forest; discover hidden natural treasures such as native snails, wild native mushrooms, and dozens of species of native orchids; listen to native bird song and waterfalls; see if you can spot a Chamois or a Tahr on the huge snow-capped mountains above while drinking a cup of tea and talking one-on-one with your guide.

Off-Road Quad Bike Adventure Tour with Franz Josef Wilderness Tours

Experience an unforgettable off-road journey through lush rainforest, riverbeds, and breathtaking glacier landscapes, including views of the Southern Alps and Franz Josef Glacier. With expert guides providing gear, training, and fascinating Māori legends, you'll enjoy an exciting quad bike or buggy ride tailored to all skill levels. Choose from single, double, or family-friendly three-seater buggies for an adventure perfect for everyone. It is important you read and understand the risks associated with this activity. For more information please see [here](#).

Your accommodation: Punga Grove Motel & Suites

Punga Grove is right in the heart of Franz Josef Glacier village stylish accommodation in a beautiful rainforest setting.



Day 22



Franz Josef to Greymouth Train Station

Head north along the mighty West Coast highway you pass through ancient temperate rainforests while getting sneak peeks of the wild coast beach occasionally. Whataroa is the next town where you can see one of the world's rarest birds, the Kōtuku - White Heron. The Kōtuku nest at the Waitangi Roto Nature Reserve, only accessible with a guided tour from October to March. The next town is Ross which is the site of an old gold mining settlement where the local information centre offers you the chance to pan for gold. Hokitika is a great place to explore craft and gift stores and head to the coast and take in the endless sea views. The Pounamu-Greenstone on offer in Hokitika is probably some of the best you will see in the country. Continue on to Greymouth, the largest town on the West Coast and the starting point for the next leg of your journey the TranzAlpine Scenic Train. Drop your rental car at the Greymouth Train Station depot located at the train station building before boarding your train to Christchurch.

TranzAlpine Scenic Train: Greymouth to Christchurch

Considered one of the world's great train journeys, the TranzAlpine Scenic Train takes you from Greymouth to Christchurch. Travel across the South Island from the west to the east coast through Arthur's Pass National Park. From the comfort of your carriage see lush beech forest, deep river valleys and the spectacular peaks of the Southern Alps. Descend to the windswept Canterbury Plains before arriving in the city of Christchurch.

Shared Transfer from Christchurch Train Station to Christchurch CBD Accommodation with Christchurch Touring Company

On arrival at the Christchurch railway station, you will be met by a driver and transferred to your Christchurch accommodation.

SUGGESTED ACTIVITY - TranzAlpine Scenic Plus Addon - KiwiRail

Feel like luxurious service, exclusive meals, inclusive drinks and priority check-in and boarding? The Scenic Plus add-on option is for you. Enjoy personal service with panoramic windows, spacious carriages and comfortable seating. The exclusive open-air viewing carriage is available if you feel like capturing the ultimate photo or simply wish to experience the great outdoors whilst travelling through the Southern Alps. Your food is prepared exclusively in a kitchen carriage, with paired drinks and a paddock-to-plate regionally inspired food menu all your senses will be fully engaged on this journey.

Your accommodation: Quest on Cambridge

Quest on Cambridge serviced apartment-style hotel rooms offer guests a relaxed and comfortable Christchurch accommodation experience. Each room has an open-plan living area, a fully equipped kitchen, and natural light. Quest on Cambridge is a short walk from the south shopping centre and to the Botanic Gardens.



Day 23



Private Transfer from Christchurch Accommodation to Christchurch Airport with Christchurch Touring Company

A private transfer will collect you from your accommodation and transfer you to Christchurch Airport in time for your departing flight.

Farewell from Aotearoa-New Zealand

Bid farewell to Aotearoa-New Zealand, taking with you unforgettable memories of its breathtaking landscapes and incredible adventures. In Maori, it is said mā te wā, which is not goodbye, it is see you soon!

Tour details

Departures:	Daily
Tour type:	Nationwide Self Drive
Starts:	Auckland
Finishes:	Christchurch
Tour length:	23
Accommodation:	Motels
Car/transport type:	

Included activities

Includes	Private train station transfers
Includes	Private airport transfers
Includes	TranzAlpine Train from Greymouth to Christchurch
Includes	Interislander ferry crossing
Includes	Real Journeys Milford Sound Cruise

Accommodation summary

Day 1	Adina Apartment Hotel Auckland Britomart
Day 2	Adina Apartment Hotel Auckland Britomart
Day 3	Sea Spray Suites
Day 4	Sea Spray Suites
Day 5	Snells Beach Motel
Day 6	Silver Fern Suites & Spa
Day 7	Silver Fern Suites & Spa
Day 8	Adina CityLife Wellington [Formerly Heritage CityLife Wellington]
Day 9	Blenheim Palms Motel
Day 10	The White Morph, Kaikōura
Day 11	Quest on Cambridge
Day 12	Quest on Cambridge
Day 13	Mt Cook Motel
Day 14	Motel on York
Day 15	Motel on York
Day 16	Lakefront Lodge
Day 17	Lakefront Lodge
Day 18	Scenic Suites Queenstown
Day 19	Scenic Suites Queenstown
Day 20	Punga Grove Motel & Suites
Day 21	Punga Grove Motel & Suites
Day 22	Quest on Cambridge