



Fiords, Glaciers & Mountains Escape

This tour immerses you in the South Island's iconic landscapes, with extra nights in Christchurch, Fiordland, and Queenstown allowing you to truly discover each destination's unique charm. Your journey begins with a scenic drive past the Southern Alps' towering peaks and the turquoise waters of alpine lakes, leading you to Aoraki/Mount Cook National Park. Next, venture south to Te Anau, the gateway to Fiordland National Park, where a helicopter awaits to whisk you away to Waitai Lodge for your exclusive Fiordland Escape. Explore the pristine wilderness with a Milford Sound nature cruise. In Queenstown, the 'Adventure Capital,' you'll have ample time to soak in the scenery and enjoy endless activities before a stunning return to Christchurch via the magnificent West Coast Glaciers.

Starts in: Christchurch
 Finishes in: Christchurch
 Length: 11days / 10nights
 Accommodation: Hotel 4 star
 Can be customised: Yes

This itinerary can be customised to suit you perfectly. We can add more days, remove days, change accommodations, mix it up, add activities to suit your interests or simply design and create something from scratch. Call us today to get your custom New Zealand itinerary underway.



Inclusions:

Includes: Late model rental cars

Includes: Unlimited kms

Included activity: Private Transfer Christchurch International Airport to Christchurch Accommodation

Included activity: The Visitor Promise - Cultural Learning Course

Included activity: Shared Transfer from Christchurch Train Station to Christchurch CBD Accommodation with Christchurch Touring Company

Included activity: Te Anau Glowworm Caves with RealNZ

Included activity: TSS Earnslaw Cruise and Walter Peak Gourmet BBQ Dinner

Includes: Fully inclusive rental car insurance (excess may apply)

Includes: Afterhours emergency support while touring

Included activity: Electronic Travel Guide and In-Country Support App

Included activity: TranzAlpine Scenic Train: Greymouth to Christchurch

Included activity: Private Transfer from Christchurch Accommodation to Christchurch International Airport with Christchurch Touring Company

Included activity: Waitai Lodge Fiordland Escape with Hollyford Wilderness Experience - Lunch and Dinner Included

: 10 breakfasts, 2 lunches, 1 dinner, 1 special dinner

Day 1



Private Transfer Christchurch International Airport to Christchurch Accommodation

On arrival, you will be met by a private driver and transferred to your Christchurch accommodation.

Welcome to Christchurch City

New Zealand's garden city is steadily being transformed into a vibrant urban destination. Encompassing a large green belt, it is known for its wide tree lined avenues and lush gardens. A great way to explore the city or easy way to see the sights or ride the historic trams across town to the renowned botanic gardens and the unique cardboard Transitional Cathedral, that's right it is built of cardboard!

Your accommodation: Sudima Christchurch City

Sudima Christchurch City is a brand new 5-star boutique hotel, ideally located on Victoria Street. Amidst an array of cafes, restaurants and bars, stay only a martini olive pips' throw from beautiful Hagley Park and Christchurch's CBD. Experience the garden city in comfort and style.



Day 2



Collect Rental Car

This tour's from price includes an intermediate-sized vehicle, setting you up for comfortable travels. Yet, we understand every adventure is unique! Feel free to select the perfect wheels from our incredible collection of rental cars, spanning from economy hatchbacks to premium SUVs.

Explore Christchurch

Following earthquakes that razed its centre and much of the outlying suburbs, Ōtautahi-Christchurch is well into a billion-dollar makeover. In the middle of the Canterbury Plains, bordering the Pacific Ocean, New Zealand's newest city is an ideal gateway to exploring the middle of the South. Go punting on the Avon River, take a historic tram ride, catch the gondola to the rim of an extinct volcano or do all three! See the world's only Cardboard Cathedral and for nature enthusiasts - wander the renowned Christchurch Botanic Gardens, or head to Oxford Terrace in the city to find a great spot to eat or drink. Drive an hour in any direction to ski, mountain bike, wine taste, whale-watch, bungee jump or play golf. Take the winding Port Hills road to the French settlement of Akaroa & Banks Peninsula and tour the vines in Waipara for an authentic New Zealand wine-tasting experience.

SUGGESTED ACTIVITY - Christchurch Triple Pass - Tram, Punting and Gondola

Experience three of Christchurch's iconic attractions in one day: the Christchurch Tram, Christchurch Gondola, and Punting on the Avon River. The historic tram is a delightful way to explore the evolving inner city, taking in the various sights with the hop-on hop-off pass and learning about the city from the live commentary. You'll also enjoy a bird's eye view of Christchurch and the Canterbury region including the distant peaks of the Southern Alps when you ride the gondola cableway to the top of the Port Hills in Heathcote Valley. Punting on the Avon River takes you through the city's green belt: a relaxing way to explore what is affectionately known as the 'Garden City'.

Your accommodation: Sudima Christchurch City

Sudima Christchurch City is a brand new 5-star boutique hotel, ideally located on Victoria Street. Amidst an array of cafes, restaurants and bars, stay only a martini olive pips' throw from beautiful Hagley Park and Christchurch's CBD. Experience the garden city in comfort and style.

Meals included: Breakfast



Day 3



Christchurch to Aoraki-Mt Cook National Park

Drive through the heart of the South Island, crossing the vast Canterbury plains. Catch your breath in Geraldine before continuing through Fairlie. Ascending Burkes pass you'll come to the picturesque town of Lake Tekapo. Follow the road and take in the view of Aoraki-Mt Cook (New Zealand's tallest mountain) from the shores of Lake Pukaki, known for its glacier fed turquoise blue colour. Continue along the lake to your final destination Aoraki-Mt Cook Village.

SUGGESTED ACTIVITY - Glacier Explorers

Experience 500-year-old icebergs up close on the Aoraki-Mt Cook terminal lake. The Glacier Explorers tour is the only one of its kind in New Zealand and one of only three in the world! Very few glaciers terminate into lakes and even fewer of them are accessible. See towering ice cliffs and floating icebergs from the safety of a specially designed boat. These boats provide a safe way to view unseen and inaccessible areas of New Zealand's largest glacier The Tasman.

Your accommodation: Hermitage Hotel, Wakefield Wing Superior Room

The Hermitage Hotel ringed by magnificent snow-capped peaks of the Southern Alps, is a world-renowned tourist destination and has been an icon of superior accommodation and dining since 1884. Room type - Wakefield Wing Superior room facing Aoraki/Mt. Cook.

Meals included: Breakfast



Day 4



Aoraki Mt Cook National Park to Te Anau

Twizel, just south of Aoraki-Mt Cook was the location of many Lord of the Rings movie scenes and a little further on is Omarama, the gliding capital of New Zealand. The Lindis Pass is one of New Zealand's highest roads with the summit reaching 971 metres. The tussock-covered hills offer a visual contrast as you pass from the Mackenzie Basin and into Central Otago. The first Central Otago settlement you reach is the quaint village of Tarras, which has several boutique stores and a lovely caf  . Cromwell sits at the head of the Kawarau Gorge and the historic old town is well worth the visit, the buildings are now home to quaint shops and cafes. The old town buildings were relocated from the valley that now sits deep under Lake Dunstan. Continue through the sheer cliffs of the Kawarau Gorge as they guide you towards Gibbston, one of New Zealand's premier wine-growing regions. At the famous historic Kawarau Bridge, you can take a bungy jump or sit back and enjoy the drama as visitors hurtle off the bridge. Approaching Queenstown the impressive Remarkables mountain range comes into view and then beautiful Lake Wakatipu as you head south. The lake guides you into Southland through its rich farming pastures and into Te Anau, the gateway to Fiordland National Park.

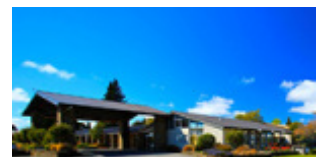
Te Anau Glowworm Caves with RealNZ

Begin your Te Anau Glowworm experience with a scenic cruise across Lake Te Anau on board the luxury catamaran, Luminosa, to the western side of the lake. On arrival, you'll enter the caves through Cavern House, where informative displays detail the history of this 12,000 year old underground network. You'll then explore by limestone pathway while your guide points out hidden whirlpools, sculpted rock formations, and a rushing underground waterfall. See a magical display of thousands of glowworms as you glide through the darkness in a small boat.

Your accommodation: Distinction Te Anau Hotel & Villas

The Te Anau Hotel and Villas offers a range of accommodation from hotel rooms and suites to villas. Ideally located on the lake front this hotel is just a few minutes stroll from the shops, cafes and many activities Te Anau has to offer.

Meals included: Breakfast



Day 5



Waitai Lodge Fiordland Escape with Hollyford Wilderness Experience - Day 1 - Lunch and Dinner Included

Your guide will transfer you to Milford Sound. Enjoy a spectacular scenic helicopter flight from Milford Sound to Martins Bay, followed by an impressive lunch set amongst the wilderness in our private location. The afternoon is yours to enjoy. Explore the Martins Bay sand dunes by foot, taking in the rugged beauty of this isolated West Coast beach. Alternatively, choose to relax at Waitai Lodge in front of the fire with a good book and enjoy a soak in the outdoor hot tubs. The group reunites for a delicious three-course dinner accompanied by a fine selection of New Zealand beer and wine. Sit back, relax, and reflect on a great first day.

Your accommodation: Waitai Lodge Fiordland Escape

Waitai Lodge stands on the shores of a glistening lake, where mighty fiords descend into pristine waterways and majestic mountains rise above the lush rainforest. Despite the remote location, the Lodge and its home comforts await you.

Meals included: Breakfast, Lunch, Dinner



Day 6



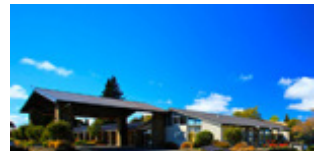
Waitai Lodge Fiordland Escape with Hollyford Wilderness Experience - Day 2 - Breakfast & Lunch Included

Awake to the sound of bird song. Enjoy a hearty breakfast before joining your guide on a scenic jetboat ride across Lake McKerrow. Take in the ever-adapting ecosystem as it shifts from a mountainous beech forest to a wetland and a vibrant coastal scenery. Marvel at ancient temperate rainforest with thousand-year-old giants such as native Rimu and Kahikatea. Alternatively, relax in the lodge while you appreciate your remote location. Regroup at the lodge in time for morning tea, before boarding your helicopter flight back to the dramatic Milford Sound. Marvel at Milford Sound's vertical granite walls rising from the sea while aboard the Fiordland Jewel for your luxury cruise. Your guide will then return you to Te Anau or Queenstown while you take in the impressive scenery.

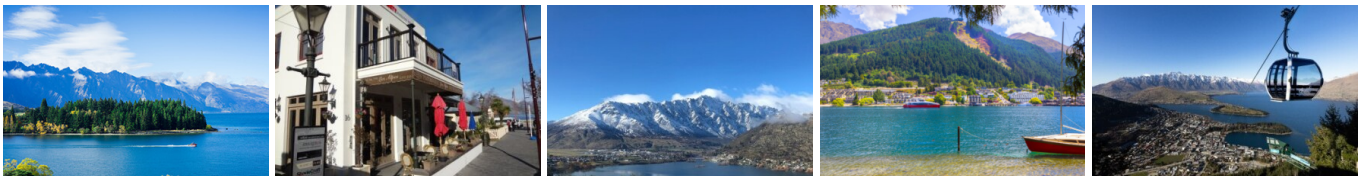
Your accommodation: Distinction Te Anau Hotel & Villas

The Te Anau Hotel and Villas offers a range of accommodation from hotel rooms and suites to villas. Ideally located on the lake front this hotel is just a few minutes stroll from the shops, cafes and many activities Te Anau has to offer.

Meals included: Breakfast, Lunch



Day 7



Te Anau to Queenstown

Journey across expansive tussock lands en route to Queenstown. Pass through Mossburn, renowned as the deer capital of New Zealand, and continue through the picturesque Southland countryside. As the road begins to trace the edge of Lake Wakatipu, marvel at the breathtaking views from the Devil's Staircase. Finally, approach Queenstown, the adventure capital of New Zealand, with the Remarkables mountain range standing majestically in the backdrop.

SUGGESTED ACTIVITY - Shotover Jet Canyon Jet Boat Ride

Shotover Jet is the only company permitted to operate in the Shotover River Canyons. It's a thrilling ride! Skim past rocky outcrops at close range in your Shotover Jet 'Big Red', as you twist and turn through the narrow canyons at breathtaking speeds. And a major highlight - hold tight for the world-famous Shotover Jet full 360-degree spins! It is important you read and understand the risks associated with this activity. For more information please see [here](#).

TSS Earnslaw Cruise and Walter Peak Gourmet BBQ Dinner

Enjoy a quintessential Kiwi experience, a delicious gourmet BBQ buffet meal, and a farm demonstration in a stunning lakeside setting. Take in the stunning views of Lake Wakatipu and its surroundings as you cruise across the lake to the historic Walter Peak high country farm aboard the TSS Earnslaw Steamship. Enjoy the ambiance of the heart of the stately homestead while your Colonel's Homestead Restaurant chef prepares a gourmet BBQ dinner. Your seasonal menu includes an extensive selection of local New Zealand produce, including succulent meats and a selection of delicious vegetables and salads. Complete your meal with your choice of delicious desserts, or New Zealand cheeses. After dinner, watch the farm dogs in action with a sheep-herding demonstration and say hello to the other farm animals. Finally, cruise home under the southern stars and enjoy the fresh night air as the lights of Queenstown draw ever closer.

Your accommodation: Millennium Hotel Queenstown

Right in the heart of the action, the Millennium Hotel is just minutes from Queenstown's central shopping and entertainment district. Outdoor activities such as bungy jumping, white water rafting and jet boating are just some of the easily accessible activities nearby in New Zealand's adventure capital.

Meals included: Breakfast, Speciality Dinner



Day 8



Explore Queenstown

Well-known as New Zealand's 'adventure capital', Queenstown is home to a range of adventures, from the world's first and most famous bungy jumps to jet boat thrills, white-water rafting, and skydiving. However, Queenstown offers far more than a fast-paced, action-packed holiday. Settled on the shores of beautiful Lake Wakatipu beneath a soaring panorama of the Remarkables Mountain Range, this alpine town is surrounded by many historic, gastronomic, and scenic wonders. Take a stroll through the beautiful lakefront parks and gardens, browse through market stalls on weekends, dine in wonderful al-fresco restaurants, or ride on the 100-year-old historic Steamship - TSS Earnslaw to Walter Peak Station. Take the Queenstown Gondola up to Bob's Peak and soak up the panoramic views of the magnificent lake and mountain ranges. And after all of that, if you do want the adrenaline rush, Queenstown is known for taking your pick from the Shotover Jet, Canyon Swing, Zipline, Luge, or Heli-hike.

SUGGESTED ACTIVITY - Appellation Boutique Wine Tour

Experience a tasting journey through three of Central Otago's incredibly scenic and varying wine sub-regions; Gibbston, Bannockburn and Cromwell. Visit three boutique vineyards, tasting their unique cool climate wines and discover why the Central Otago region has become world-renowned in its own right. Indulge at a fourth vineyard restaurant for a platter-style lunch, savouring the finest and freshest produce, accompanied with a wine flight.

There will also be an opportunity to retrace history when you stroll through the charming historical settlement of Old Cromwell.

Your accommodation: Millennium Hotel Queenstown

Right in the heart of the action, the Millennium Hotel is just minutes from Queenstown's central shopping and entertainment district. Outdoor activities such as bungy jumping, white water rafting and jet boating are just some of the easily accessible activities nearby in New Zealand's adventure capital.

Meals included: Breakfast



Day 9



Queenstown to Franz Josef Glacier via Wānaka

From Queenstown you'll cross the Crown Range, the highest sealed road in New Zealand to arrive in the Alpine town of Wānaka, gateway to Mt Aspiring National Park. Skirting the shores of both Lake Wanaka and Hawea, you will enter the small town of Makarora. Stop at Blue Pools for a 1-hour return walk through the native beech forest to a glacier-fed swimming hole. Continue on through the remote seaside settlement of Haast before heading up the wild West Coast highway you pass through ancient temperate rainforests while getting sneak peeks of the wild coast beaches occasionally. Keep heading North and be sure to enjoy the view of the ever-changing towering snowcapped Southern Alps Mountain Range. Fox Glacier welcomes you first, then comes your destination for the night Franz Josef township.

SUGGESTED ACTIVITY - Twin Glacier Scenic Helicopter Flight with The Helicopter Line

A spectacular scenic flight soaring over two of New Zealand's most famous glaciers, Fox and Franz Josef. Landing at the head of one and view the incredible sight of this frozen river as it winds its way through ancient carved valleys. It is important to read and understand the risks associated with this activity. A full risk disclosure can be found [here](#).

Your accommodation: Scenic Hotel Franz Josef Glacier

Only a breath away from the Franz Josef Glacier, Scenic Hotel is located in the heart of Franz Josef Village. Here you will find all of the amenities you would expect, as well as being close to the shops, restaurants and activities on offer in the beautiful Westland region.

Meals included: Breakfast



Day 10



Franz Josef to Greymouth Train Station (Return Rental Car)

Head north along the mighty West Coast highway you pass through ancient temperate rainforests while getting sneak peeks of the wild coast beach occasionally. Whataroa is the next town where you can see one of the world's rarest birds, the Kōtuku - White Heron. The Kōtuku nest at the Waitangi Roto Nature Reserve, only accessible with a guided tour from October to March. The next town is Ross which is the site of an old gold mining settlement where the local information centre offers you the chance to pan for gold. Hokitika is a great place to explore craft and gift stores and head to the coast and take in the endless sea views. The Pounamu-Greenstone on offer in Hokitika is probably some of the best you will see in the country. Continue on to Greymouth, the largest town on the West Coast and the starting point for the next leg of your journey the TranzAlpine Scenic Train. Drop your rental car at the Greymouth Train Station depot located at the train station building before boarding your train to Christchurch.

TranzAlpine Scenic Train: Greymouth to Christchurch

Considered one of the world's great train journeys, the TranzAlpine Scenic Train takes you from Greymouth to Christchurch. Travel across the South Island from the west to the east coast through Arthur's Pass National Park. From the comfort of your carriage see lush beech forest, deep river valleys and the spectacular peaks of the Southern Alps. Descend to the windswept Canterbury Plains before arriving in the city of Christchurch.

Shared Transfer from Christchurch Train Station to Christchurch CBD Accommodation with Christchurch Touring Company

On arrival at the Christchurch railway station, you will be met by a driver and transferred to your Christchurch accommodation.

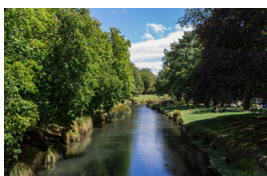
Your accommodation: Sudima Christchurch City

Sudima Christchurch City is a brand new 5-star boutique hotel, ideally located on Victoria Street. Amidst an array of cafes, restaurants and bars, stay only a martini olive pips' throw from beautiful Hagley Park and Christchurch's CBD. Experience the garden city in comfort and style.

Meals included: Breakfast



Day 11



Private Transfer from Christchurch Accommodation to Christchurch International Airport with Christchurch Touring Company

A private transfer will collect you from your accommodation and transfer you to Christchurch International Airport in time for your departing flight.

Farewell from Aotearoa / New Zealand

Bid farewell to Aotearoa / New Zealand, taking with you unforgettable memories of its breathtaking landscapes and incredible adventures. In Māori, it is said mā te wā, which is not goodbye, it is see you soon!

Tour details

Departures:	Daily
Tour type:	South Island Self Drive
Starts:	Christchurch
Finishes:	Christchurch
Tour length:	11
Accommodation:	Hotel 4 star
Car/transport type:	

Accommodation summary

Day 1	Sudima Christchurch City
Day 2	Sudima Christchurch City
Day 3	Hermitage Hotel, Wakefield Wing Superior Room
Day 4	Distinction Te Anau Hotel & Villas
Day 5	Waitai Lodge Fiordland Escape
Day 6	Distinction Te Anau Hotel & Villas
Day 7	Millennium Hotel Queenstown
Day 8	Millennium Hotel Queenstown
Day 9	Scenic Hotel Franz Josef Glacier
Day 10	Sudima Christchurch City