



Ultimate New Zealand Self Drive Tour

Our longest tour allows you time to explore every region of New Zealand including those iconic destinations you've heard so much about and some lesser known gems that the outside world hasn't discovered yet. In the north, you'll travel from idyllic beaches and bays to vibrant cities and world class wine regions. Crossing the Cook Strait on the Interislander Ferry brings you to the South Island with its spectacular mountain landscapes and diverse coastal scenery. You'll also visit our third largest island, Stewart Island, which is a haven for nature and wildlife.



Starts in: Auckland
Finishes in: Christchurch
Length: 42days / 41nights
Accommodation: Motels
Can be customised: Yes

This itinerary can be customised to suit you perfectly. We can add more days, remove days, change accommodations, mix it up, add activities to suit your interests or simply design and create something from scratch. Call us today to get your custom New Zealand itinerary underway.



Inclusions:

Includes: Late model rental cars

Includes: Unlimited kms

Included activity: Electronic Travel Guide and In-Country Support App

Included activity: Private Transfer Auckland Airport to your Auckland Accommodation with Tourcorp

Included activity: Huka Falls Jet Boat Ride

Included activity: Invercargill to Stewart Island with Stewart Island flights

Included activity: Stewart Island to Invercargill with Stewart Island flights

Included activity: Doubtful Sound Wilderness Cruise from Manapouri with RealNZ

Included activity: Franz Josef Nature Tour with Glacier Valley Eco Tours

Included activity: TranzAlpine Scenic Train: Greymouth to Christchurch

plus much more...

Includes: Fully inclusive rental car insurance (excess may apply)

Includes: Afterhours emergency support while touring

Included activity: The Visitor Promise - Cultural Learning Course

Included activity: Waitomo and Aranui Caves tour Combo

Included activity: Interislander Ferry Wellington to Picton

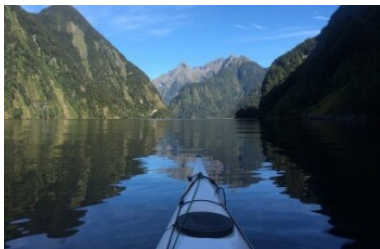
Included activity: Ulva Island Explorer

Included activity: Milford Sound Cruise with Real NZ - Lunch Included

Included activity: Hole in the Rock Cruise with Fullers GreatSights

Included activity: Shared Transfer from Christchurch Train Station to Christchurch CBD Accommodation with Christchurch Touring Company

Included activity: Private Transfer from Christchurch Accommodation to Christchurch Airport with Christchurch Touring Company



Day 1



Private Transfer Auckland Airport to your Auckland Accommodation with Tourcorp

You will be met at the Auckland airport by the driver and transferred to your Auckland accommodation.

Welcome to Auckland

Welcome to Auckland, known in Māori as Tāmaki Makaurau. Auckland is New Zealand's vibrant "City of Sails," and the country's largest metropolitan area. Nestled between the Pacific Ocean and the Tasman Sea. Surrounded by native bush, lush rainforests, and pristine beaches, Auckland is a haven for both adventurers and urban explorers. Wander through world-class museums and galleries in the city centre or enjoy a peaceful retreat at the Auckland Gardens, where stunning landscapes showcase New Zealand's diverse flora. Stroll along the lively waterfront to savour fresh seafood and international cuisine at Viaduct restaurants. For an unforgettable perspective, ascend the iconic SkyTower, New Zealand's tallest structure, and take in panoramic views of the city and its picturesque islands.

SUGGESTED ACTIVITY - Harbour Sailing Cruise with Explore

Enjoy the City of Sails from the water on a relaxed harbour sailing yacht. This cruise offers a uniquely local experience experiencing the harbour under sail with a small vessel with an intimate and engaging atmosphere. View the stunning city sights while sailing on the inner Waitemata Harbour. Sail where the wind takes us while enjoying Auckland's city highlights; including sailing under the Harbour Bridge and other well-known landmarks along the harbour's edge. The crew's local knowledge will give you the best harbour sailing experience Auckland has to offer. Become the crew and help participate with the sailing experience take the helm while you carve through the water, or if you prefer just sit back and relax above deck.

Your accommodation: Adina CityLife Auckland [Formerly Heritage CityLife Auckland]

Admirably positioned in the hub of the city's business, retail and entertainment district, the Adina CityLife Hotel is perfect to explore Auckland. Their self-contained suites are equipped with everything you will need to enjoy your stay.



Day 2



Collect Rental Car

This tour's from price includes an intermediate-sized vehicle, setting you up for comfortable travels. Yet, we understand every adventure is unique! Feel free to select the perfect wheels from our incredible collection of rental cars, spanning from economy hatchbacks to premium SUVs.

Car Instructions

On collection of your rental car, you will be required to sign a rental agreement and provide a credit card for a security bond authorisation. Remember, the bond is only authorised, not charged, at this stage. While your rental rate may include coverage for mechanical breakdowns (please verify your specific car inclusions), you may also have the option to purchase roadside assistance for non-mechanical issues. All drivers must present a physical credit card, valid driving license and passport to be added to the agreement, with potential additional charges for extra drivers. Debit cards may be used on select vehicles. If you are presenting an international drivers license, this must be accompanied by the original domestic license. Drivers under 21 are not permitted, and those aged 21-24 may face a surcharge, both payable directly to the rental company. For detailed information, please refer to your rental car inclusions. See this important information if you are traveling between the North and South Islands on the ferry

Explore Auckland

Perched on the edge of a large natural harbour, New Zealand's 'City of Sails' offers the best of both worlds. Sandy beaches, native bush and lush rainforests give way to a vibrant urban culture. Spend time in the Viaduct Harbour, try your hand at sailing an America's Cup Yacht or take the ferry to nearby Waiheke Island for a gourmet food and wine experience. Venture to the top of Auckland's highest volcano, Mt Eden, for soaring views of the Hauraki Gulf or hop on the short ferry to Rangitoto Island and hike to the top of the volcanic island. Immerse yourself in nature at the expansive Auckland Botanic Gardens, sprawled across 156 acres of native forest, pack a picnic, soak up the sunshine, and enjoy the birdsong. Head up to the Sky Tower, standing over 300m tall, and have a meal in the 360-degree revolving restaurant. Scale the outermost perimeter of the Harbour Bridge or test your stomach with a bungee jump, then end your day on Ponsonby Road sampling upmarket culinary delights.

SUGGESTED ACTIVITY - Ferry from Auckland to Rangitoto Island and return with Fullers

A short cruise through the Waitemata Harbour to the Hauraki Gulf delivers you to Rangitoto Island. Rangitoto Island is the largest and youngest of the many volcanoes that make up the Auckland volcanic field. It erupted around 600 years ago, but is extinct now and safe to explore. During your cruise to and from the island enjoy fantastic views of Rangitoto Island and Auckland. On reaching the island you can walk to the summit (1 hour direct) for great views of the Hauraki Gulf and over Waitemata Harbour looking back towards Auckland. There are a number of walking trails to explore this volcanic island, further information can be found at the Department of Conservation website.

SUGGESTED ACTIVITY - Auckland Harbour Bridge Climb with AJ Hackett

The only bridge climb in New Zealand, this spectacular AJ Hackett walking tour is the ultimate way to experience the iconic Auckland Harbour Bridge. Custom engineered walkways provide a safe and enjoyable experience. As you're guided along the curving archways you'll be greeted with a 360 degree, panoramic view of the sparkling Waitemata harbour. See the best of the city from above and learn all about the secrets of the bridge! It is important you read and understand the risks associated with this activity. For more information see [here](#).

Your accommodation: Adina CityLife Auckland [Formerly Heritage CityLife Auckland]

Admirably positioned in the hub of the city's business, retail and entertainment district, the Adina CityLife Hotel is perfect to explore Auckland. Their self-contained suites are equipped with everything you will need to enjoy your stay.



Day 3



Auckland to Paihia

The drive from Auckland to the Bay of Islands takes approximately 3.5 hours, but allow extra time to enjoy the sights along the way. Pause for a breath of fresh salty air in Whangarei, where you can explore scenic highlights like the Whangarei Falls or the lively Town Basin. Further along, take a break in Kawakawa known for its quirky, world-famous Hundertwasser Toilets. As you approach Paihia, the gateway to the Bay of Islands, soak in the stunning views of native bush and endless golden beaches that define this iconic Northland region.

Your accommodation: Sea Spray Suites

Sea Spray Suites offers comfortable and relaxing accommodation close to Paihia's best activities and attractions. Directly across the road is the beautiful Te Ti Beach, exploring Paihia's beautiful waters and wildlife is only a short step away. If you are interested in experiencing New Zealand's heritage, The Waitangi Treaty House is only 1km away.



Day 4



Explore Bay of Islands

Commonly known as the 'winterless north', New Zealand's Bay of Islands is made up of over 140 subtropical atolls. Renowned for its untouched beaches, abundant marine life, and idyllic climate, this tropical paradise ticks all the boxes. Spend some time on a remote stretch of beach, or see the dolphins on an ocean safari. If diving is your thing, take the morning to descend the Rainbow Warrior - The Greenpeace flagship sunk by French saboteurs in 1985. Wander around Russell, a whaling port founded in 1843. Learn about our culture in historic Waitangi, the site where The Treaty of Waitangi was signed in 1840 between the Māori and Europeans. Alternatively, you may like to take a day tour to Cape Reinga, the very top of the North Island.

Hole in the Rock Cruise with Fullers GreatSights

Board your cruise and take in the stunning views as you glide out through the islands and along the Rakaumangamanga Peninsula to Cape Brett, where a historic lighthouse keeps watch over and Piercy Island/Motukōkako, or as it is popularly known as the Hole in the Rock. According to Māori legend, local warriors used to paddle through the Hole in the Rock in their canoes before departing for battle. Drops of water from the cave roof above were a good omen. If conditions permit, your skipper will expertly guide the ship through the narrow space. Keep an eye out for common and bottlenose dolphins, whales, and other marine life during your cruise, and have your camera ready as you get up close to the action. Stop off at Otehei Bay on Urupukapuka Island where you have time to relax, take a walk, have a swim, or enjoy a bite to eat and drink from the on-site fully licensed cafe. The purpose-built catamaran is licensed by DOC (the Department of Conservation) for dolphin viewing and the crew has years of experience locating dolphins in these waters.

Your accommodation: Sea Spray Suites

Sea Spray Suites offers comfortable and relaxing accommodation close to Paihia's best activities and attractions. Directly across the road is the beautiful Te Ti Beach, exploring Paihia's beautiful waters and wildlife is only a short step away. If you are interested in experiencing New Zealand's heritage, The Waitangi Treaty House is only 1km away.



Day 5



Bay of Islands to Waipoua Forest to Matakana

Heading west from the Bay of Islands you leave the Pacific Ocean and soon arrive into the Hokianga and the wilder seas of the Tasman. The small townships of Omapere and Opononi have a great seaside feel and the perfect place to stop for an ice cream. The route now heads south and into the Waipoua Forest, home to the massive Kauri trees. Make sure you allow time to take a few short walks that are signposted as you pass through the region. Not to be missed is the 5-minute loop to view the largest of all the trees Tane Mahuta. Heading back across country the Matakohe Kauri Museum is an award winning museum and has extensive displays of the regions logging, farming and social history. Just a short drive from Warkworth towards the coast is the small township of Matakana and a little further you will find the often deserted beaches of the Tawharanui Marine Reserve.

Your accommodation: Snells Beach Motel

Snells Beach Motel is perfectly situated, on the Mahurangi East Peninsula, overlooking the beautiful Kawait Bay and in the heart of the wonderful Matakana Coast Wine Country area.



Day 6



Matakana to Coromandel Township

Continuing south you pass through New Zealand's biggest city, Auckland and soon you will pass the city boundaries where the landscape changes to rolling lush farmland. The fertile Hauraki Plains are one of New Zealand's largest dairy producing regions. The Thames Estuary is a haven for wildlife in particular shore birds and a short detour to Miranda (well sign posted) is worthwhile to see the large flocks of godwits and oyster catchers amongst others. Arriving into the old gold town of Thames you can choose two different routes to the Coromandel's east coast. Straight over the Coromandel Ranges on highway 25A will deliver you to the coast in around 45 minutes. The more scenic route however takes you north to Coromandel Township along the Pohutukawa Coast (part of the Pacific Coast Highway). This is one of the most spectacular drives in the region and not to be missed.

SUGGESTED ACTIVITY - Driving Creek Railway & Potteries - EyeFull Tower Tour

Driving Creek Railway and Potteries has become a Coromandel icon. The dream of Barry Brickell was to establish a pottery workshop on his land. Using a railway he would have access to the clay on the land and the pine kiln fuel. Over the next 15 years the railway developed until in 1990 it was finally licensed to carry fare paying passengers and ever since thousands of visitors have made the trip to Coromandel to experience this unique attraction. The 1 hour return train trip on the innovatively designed trains takes you through replanted native kauri forest and includes 2 spirals, 3 short tunnels, 5 reversing points and several large viaducts as it climbs up to the mountain-top terminus. The pottery is still producing and you can watch the artists at work as well as purchase items. It is important you read and understand the risks associated with this activity. For more information please see [here](#).

Your accommodation: Coromandel Court Motel

The Motels are in an excellent location with just a 3-minute stroll to shops and restaurants. Well equipped to ensure a comfortable stay.



Day 7



Coromandel Township to Tairua

Head east from Coromandel Township along the scenic coastline of Whangapoua Harbour and Kūaotunu Beach. For this drive leave plenty of time for stops and detours, as there are multiple side roads leading to secluded picnic spots and golden bays. Stop in Whitianga, and grab a bite at one of its many local cafes and eateries. Stretch your legs with a short walking detour and take a ferry over to Cooks Beach and Flaxmill Bay. Continue south, and be sure to take the scenic route down Hot Water Beach Road to Hot Water Beach and the Holiday town of Hahei. Finish your drive to Tairua and feel relaxed as you reach this calm seaside community.

SUGGESTED ACTIVITY - Coves, Caves and Coastline Cruise from Whitianga

Explore the volcanic coastline with its many caves, blowholes and golden beaches all from the comfort and safety of an ex coastguard 28 ft cruiser. Departing from Whitianga Wharf journey past the towering Shakespeare's Cliffs and historic Cooks Beach. Visit Cathedral Cove and the islands in the marine reserve. There is also a chance to swim with the abundant fish in the reserve (on board snorkel gear provided - don't forget your swimsuit and towel). For those who prefer to stay dry an underwater camera relays images to an onboard TV.

Your accommodation: Pacific Harbour Villas

Pacific Harbour Villas is a perfectly located Tairua accommodation set among lush gardens on the shores of the spectacular Tairua Harbour.



Day 8



Tairua to Rotorua via Tauranga

Today you'll be leaving the Coromandel Peninsula and passing through the town of Whangamata, a popular tourist destination for Kiwi holidaymakers and home to one of the best beaches in the region. Stop in Wahi to view its operational open cast gold mine, just follow the signs to a unique vantage point overlooking the Martha Mine. For rail enthusiasts, be sure to take a trip on the Goldfields Railway along its historic and scenic track. Continue on through the Bay of Plenty and the portside city of Tauranga. Your driving route now takes you along the Pyes Pa Road to Rotorua. If Lord of the Rings is your thing take a detour along State Highway 29 to Matamata, home to the fictional Tolkien village, Hobbiton. As you arrive into Rotorua take in the spectacular lake views along with clouds of steam rising from multiple geysers across the region.

Your accommodation: Silver Fern Suites & Spa

Silver Fern Suites & Spa is located just minutes from Rotorua's city centre and is close to popular thermal attractions, cafes, restaurants and golf courses. Suites have a private spa pool or double spa bath for you to unwind and relax.



Day 9



Explore Rotorua

Peppered with natural hot springs, boiling mud pools and steaming geysers, Rotorua sits within one of the world's most active volcanic regions. Geothermal landmarks aside, this city of sulphur has a rich indigenous history. Home to several prominent Māori tribes, a visit to one of the Māori experiences should be high on your agenda, learn about the special meaning of pounamu-Greenstone with Mountain Jade, explore the geysers and arts of Te Puia or immerse in an evening with Te Pā Tū. An excursion to one of the area's wellness spas is also a must! Try the Polynesian Spa for an invigorating soak in its natural mineral hot springs, Wai Ariki offers an indulging and unwinding restorative journey or pay a quick visit to Secret Spot for a soak and a delicious smash burger! If it is a thrill you are looking for, spike your adrenaline at Rotorua Canopy Tours, soaring above the ancient native forest below. Alternatively, head up the Skyline Rotorua Gondola for soaring lake views, and ride the luge at night for an extra thrill. Make the most of your time in Rotorua with an excursion through the Wai-O-Tapu Thermal Wonderland, one of the area's most colourful volcanic attractions. Whatever you are after, Rotorua is almost certain to have it!

SUGGESTED ACTIVITY - National Kiwi Hatchery Experience

The National Kiwi Hatchery Experience is a special opportunity to gain insight into and view this highly regarded conservation centre. Developed with the visitor experience in mind, the hatchery boasts special viewing opportunities and is hosted by kiwi expert guides who ensure guests leave fully informed and all questions answered. Learn all about New Zealand's intriguing national icon and the efforts of the kiwi husbandry team, see and discover what it takes to hatch and rare chicks, and if you're lucky see baby chicks in person!

SUGGESTED ACTIVITY - Original Ziplining Experience with Rotorua Canopy Tours

Embark on a three-hour adventure through the native New Zealand forest. Journey through the beautiful forest canopy via an incredible network of trails, tree platforms, Ziplines and swing bridges. See breathtaking views of the woodland valleys and hills as you fly through tight openings in the trees. In between the thrill of the ziplines and suspended tree bridges, your guides will share their passion and knowledge for the forest and the conservation challenges to preserve it. It is important you read and understand the risks associated with this activity. For more information see [here](#).

Te Pā Tū Evening Māori Cultural Experience - Dinner Included

New Zealand's Most Awarded Cultural Attraction, presenting Te Pā Tū. Feast on song, drama, tradition, and divine seasonal kai (cuisine) within the forest Pā (village) blanketed by towering Tawa trees, blazing bonfires, and a forest-formed amphitheatre. Te Pā Tū shares Māori history, traditions, and cultural aspirations across 4-hours of celebration and feasting. These events change with each season of the Maramataka, the Māori lunar calendar.

SUGGESTED ACTIVITY - Wai-O-Tapu Thermal Wonderland

Wai-O-Tapu Thermal Wonderland is a spectacular showcase of New Zealand's colourful and unique geothermal elements sculpted by thousands of years of volcanic activity. You will be introduced to a diversely different natural landscape, extending over 18-sq. km. Enjoy viewing the volcanic features as you walk at your own pace along well-defined tracks. Relax in the first-class Visitor Centre, home to the Gift Shop and Caf'e facilities. Visit the Mud Pool, the largest in New Zealand, it was originally the site of a large mud volcano which was destroyed through erosion in the 1920s. See the history and beauty of the Lady Knox Geyser at 10:15 am every day where a daily eruption happens of up to 20 metres.

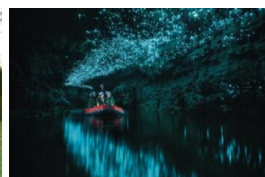
Your accommodation: Silver Fern Suites & Spa

Silver Fern Suites & Spa is located just minutes from Rotorua's city centre and is close to popular thermal attractions, cafes, restaurants and golf courses. Suites have a private spa pool or double spa bath for you to unwind and relax.

Meals included: Speciality Dinner



Day 10



Rotorua to Waitomo

The drive today takes you through the rolling green farmland of the Waikato and King Country. New Zealand's longest river, the Waikato River, guides you through the art and craft village of Tirau and the quaint township of Cambridge, before turning south towards the limestone region of Waitomo.

Waitomo Glowworm Caves and Aranui Cave tour

For over 100 years Waitomo Glowworm Caves have attracted people from all over the world to this subterranean wonderland. An ancient underground labyrinth of limestone caves and grottos, and amazing stalactites and stalagmites.

Waitomo Glowworm Caves

Formed over 30 million years ago there are two levels to the Waitomo Glowworm Caves which are 16 metres apart. The upper level is dry and includes the entrance to the cave, the Catacombs and the Organ Loft. The lower level consists of stream passages and the Cathedral. As you glide quietly beneath the lights of thousands of glowworms, it is only the gentle sound of dripping water that reminds you that you are deep underground and not beneath a star filled sky.

Aranui Cave

Located in Ruakuri Scenic Reserve, Aranui is a dry cave. There is only one entrance to Aranui and without a river flowing through, it houses very little life past the entrance. However, just inside the entrance is a colony of cave wetas. Aranui is famous for its beautiful arrays of stalactites, stalagmites, flowstones and unusual formations.

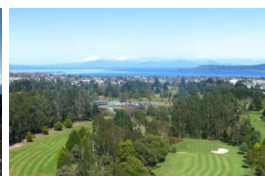
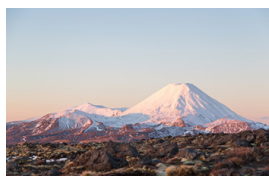
Duration: Allow 2 hours for the two cave combo.

Your accommodation: Waitomo Caves Guest Lodge

The guest lodge is situated right in the heart of Waitomo Caves Village, in a peaceful garden setting, with beautiful views over the surrounding countryside. Opposite the award-winning Huhu cafe and just a couple of minutes walk from the Waitomo i-SITE Visitor and Discovery Centre.



Day 11



Waitomo to Taupo

Tongariro National Park is a World Heritage Site. Three active volcanoes form the backbone of this spectacular region. Hiking, fishing, climbing, mountain biking, scenic flights or simply taking a drive to the top of the ski field road at Whakapapa are some of the most popular ways to enjoy the region.

Descending into the trout fishing capital of New Zealand the township of Turangi sits on the Southern shores of Lake Taupo. Next the township of Taupo and New Zealand's largest lake, Lake Taupo. The lake itself is actually a gigantic volcanic caldera formed during one of the worlds largest ever eruptions. Just north of the town are the Huka Falls and a short detour to view is advised. The Huka Jet can get you much closer with a thrilling jet boat ride also if you wish. Craters of the Moon is a nearby geothermal reserve with well formed walking tracks around its many bubbling pools and steaming vents.

Huka Falls Jet Boat Ride

The Huka Jet is 30 minutes of pure fun and exhilaration, skimming close to cliffs, sliding past trees, feeling the adrenalin of full 360 degree spins. The excitement continues right up to the base of the foaming Huka Falls, where you get a spectacular water level view to New Zealand's most visited natural attraction. Nothing compares to watching 220,000 litres per second tumbling over the cliff face towards you. The water from the mighty Huka Falls runs down the Waikato River through a series of Hydro Power Stations. You'll get a view of the Wairakei Geothermal Power Station in the comfort of a powerful Chevrolet V8 jet boat. This unique Geothermal Power Station uses underground geothermal activity to produce hot steamy water. The Waikato Rivers beautiful environment is varied and unique and is New Zealand's longest river flowing north from our largest lake, Lake Taupō. It is important you read and understand the risks associated with this activity. For more information please see [here](#).

SUGGESTED ACTIVITY - Craters of the Moon Geothermal Walk

Located a few minutes north of Taupō this geothermal park known as Craters of the Moon has a great self guided 30 minute walk through steaming craters and bubbling mud pools. Well marked walkways with interpretive boards guide you through one of the regions many active volcanic parks.

Your accommodation: Beechtree Motel

Beechtree Motel offers luxury, modern apartment and motel style accommodation. Just a five minutes stroll to cafes, restaurants and the Taupo lakefront.



Day 12



Taupō to Napier

The road from Taupō climbs the Ahimanawa Range before reaching the Pacific Coast north of Napier, a city famed for its 1930s Art Deco architecture, Mediterranean climate, and over 2,200 hours of sunshine a year. Known as the city by the sea, Napier boasts vibrant cafes, wineries, and local produce, with Marine Parade offering sweeping ocean views toward Cape Kidnappers, home to the world's largest mainland gannet colony. Bluff Hill provides panoramic views of the town, Westshore beaches, and the bustling Port of Napier. A full day can be spent exploring Ocean Spa hot pools, the Hawke's Bay Museum, and the National Aquarium. In 1931, a devastating magnitude 7.8 earthquake destroyed much of Napier and Hastings, killing 258 people. The subsequent rebuilding created the modern Art Deco city we see today, with the Ahuriri Lagoon raised over two metres to allow for future growth.

Your accommodation: Bella Vista Napier

Bella Vista Motel Napier invites you to experience its friendly service and modern motel units. Located close to shops, restaurants and the renowned Marine Parade with its majestic Norfolk pines.



Day 13



Explore Hawke's Bay

Discover Hawke's Bay, known in Māori as Te Matau-a-Māui or the fish hook of Māui. This is a region renowned for its Mediterranean charm, iconic Art Deco architecture, and award-winning wineries. Explore Mission Estate, the birthplace of New Zealand wine, or tour vineyards for a deeper dive into its winemaking legacy. Fans of the 1930s can enjoy a Vintage Car Tour, showcasing Napier's architectural gems. Outdoor enthusiasts can cycle over 200km of scenic trails or unwind at pristine beaches like Ocean and Waimarama. Indulge your taste buds with local delights, from honey and chocolate to fresh orchard produce. The Hawke's Bay is also home to an abundance of wildlife, head out on a Gannet Safari or educate yourself at the National Aquarium of New Zealand.

SUGGESTED ACTIVITY - Gannet Safaris

Drive along the scenic coast from Napier to Te Awanga and join Gannet Safaris Overland and the world's largest, most accessible gannet colony at Cape Kidnappers. Gannet Safaris has been guiding visitors over Cape Kidnappers for over 35 years and their safaris are the only way to be driven right to within a few feet of these remarkable birds. You will travel in comfort in air-conditioned 4 x 4 wheeled vehicles, through Cape Kidnappers Station - traversing riverbeds, broad rolling pastures, stands of native bush, steep gullies and breath-taking inclines. There is a stop on the way at a spectacular cliff top with panoramic views of Hawke's Bay right across to Mahia peninsular. The 36km, three hour trip includes a commentary by your tour guide/driver on the farming operation on Cape Kidnappers Station and an introduction to the gannets. On arrival at the gannets you can stretch your legs and take in the scenery from your position at the brink of the cliff's edge, 100 metres above the ocean!

SUGGESTED ACTIVITY - Hawke's Bay Half Day Wine Tour with Grape Escape

This wine tasting tour is designed for casual imbibers and wine aficionados. Meet like-minded people and share an appreciation of Hawke's Bay's fantastic wines. Taste great wines made with passion and learn of the area's unique growing conditions. Take home outstanding wines and wonderful memories. Join a fun filled wine tasting afternoon in the sun driving through absolutely stunning scenery. Meet like-minded people and share an appreciation of this region's fantastic wine. Visit four to five wineries and enjoy a cheese platter on the grounds of the Ngatarawa Vineyard beside the lily pond.

Your accommodation: Bella Vista Napier

Bella Vista Motel Napier invites you to experience its friendly service and modern motel units. Located close to shops, restaurants and the renowned Marine Parade with its majestic Norfolk pines.



Day 14



Napier to Martinborough

As you leave the rolling countryside of the Hawke's Bay you'll be greeted with some of the country's richest dairy farmland in the Manawatu Gorge. Continue on through the Wairarapa region and stop in the Pukaha Mount Bruce Wildlife Centre, where you can see some of New Zealand native animals. Take another break in Masterton, and visit the interactive Woolshed Museum to learn about sheep farming in New Zealand. As you drive south, a visit to historic Greytown is a must-do. Take in the restored Victorian buildings and make time for a cup of tea at one of its quaint cafes. Leaving state highway 2 you will cross over the Ruamahanga River into Martinborough wine country your destination for the day.

SUGGESTED ACTIVITY - Martinborough Half Day Wine Tour with Martinborough Wine Tours

Visit wonderful vineyards such as Te Kairangi Wines, Tirohana Estate, Cabbage Tree Vineyard and Martinborough Vineyard on this half day tour of the premium wine region of Martinborough. Taste the wines, learn about the development of the region, its people and characters from knowledgeable guides.

Your accommodation: The Claremont, Martinborough

Set just outside the main village, The Claremont is the ideal base for you to enjoy everything the region has to offer. Well-appointed, self-contained apartments and units will make your stay very comfortable.



Day 15



Martinborough to Wellington City

Cross the Remutaka Ranges as you make your way to New Zealand's capital city, Wellington. Often compared to Melbourne, Wellington is vibrant cultural hub. Home to the nation's centre of government. Legislation happens in the aptly named 'Beehive', an executive wing attached to the Houses of Parliament. At 1km squared, the city centre (easily traversed on foot) has an international feel and is peppered with underground art shows, alleyway cafes and New York style delis. Take in the boardwalk view as you stroll to Te Papa Museum or indulge your cinematic side exploring Weta Workshop, the Oscar Award winning design studio for Lord Of The Rings. For a taste of vintage fashion, spend some time (and dollars!) on Cuba Street browsing the boutiques. Work off last night's dinner with a cycling tour of Oriental Bay and undo your good work with a Hokey Pokey ice-cream in the sun. For those heading further down, the capital is where you board the ferry crossing the Cook Strait to the South Island.

Your accommodation: Adina CityLife Wellington [Formerly Heritage CityLife Wellington]

Adina CityLife Wellington is a suite style hotel with every amenity required for a comfortable stay, as well as being in a superb location to explore the compact city centre. Situated on Lambton Quay, you'll find the best shopping, tourist attractions and cultural landmarks all within easy walking distance.



Day 16



Wellington

Wellington known in Māori as Te Whanganui-a-Tara is home to New Zealand's centre of government. Often referred to as 'mini Melbourne', this windy city is a melting pot of art, culture, food, and fashion. Quirky laneway bars, underground art shows, and hipster eateries make up its inner-city vibe, while a host of sandy beaches outside the urban bustle bring a cheerful holiday feel. Head to Te Papa Museum for a history lesson and a ticket to one of its many international exhibitions or jump aboard the Wellington Cable Car - the only running funicular railway in the country. For those with an eye for boutique, fashion wander through Cuba St to sample some of the city's best vintage stores. Break for coffee at a hipster cafe and be sure to snap a pic outside the 'Beehive', New Zealand's parliamentary debate chamber. Go behind the scenes at Weta Workshop Experience, the Oscar Award Winning design studio behind Lord Of The Rings, The Hobbit, and Avatar. If you're a foodie at heart, a two-hour round trip to Martinborough is a must-do. Take your time as you wind through spectacular wine country. For an educational day out, learn about New Zealand's native species at Zealandia, the world's first fully-fenced eco-sanctuary and home to over 40 types of endangered and native birds.

SUGGESTED ACTIVITY - Lord Of The Rings Half Day Private Tour with Capital Personalised Tour

Prepare for an unforgettable LOTR adventure. Leaving Wellington, you will first head for the hills, admiring views from Mt Victoria before visiting Hobbit's Hideaway in the 'Outer Shire'. Next, immerse yourself at the Weta Cave in Miramar. Tour the museum, shop, and capture photos with iconic movie props. Experience the fascinating 'Weta Workshop Experience', going behind-the-scenes to see props and weaponry, with artists describing their creations. After a magical cinematic journey, you will return to Wellington.

SUGGESTED ACTIVITY - Zealandia By Night Wildlife Sanctuary Tour

Taking a night tour of Zealandia wildlife eco-sanctuary is an unforgettable experience and one that comes highly recommended. A conservation success and safe haven for some of New Zealand's rarest native animals, Zealandia is home to many remarkable species of birds, reptiles and insects living wild within a beautiful 225 hectare (one square mile) valley, just 10 minutes from the central city.

Your accommodation: Adina CityLife Wellington [Formerly Heritage CityLife Wellington]

Adina CityLife Wellington is a suite style hotel with every amenity required for a comfortable stay, as well as being in a superb location to explore the compact city centre. Situated on Lambton Quay, you'll find the best shopping, tourist attractions and cultural landmarks all within easy walking distance.



Day 17



Interislander Ferry Wellington to Picton

The 92 km journey between Wellington and Picton takes around 3 hours and has been described as 'one of the most beautiful ferry rides in the world'. Leaving Wellington Harbour the ferry passes many interesting points such as Pencarrow Head on top of which is New Zealand's oldest lighthouse (1859). Red Rocks is home to a seal colony and Oterangi Bay is the site which recorded the country's highest ever wind speed of 268 kph (167 mph).

From the Cook Strait spectacular views of the Kaikōura Ranges on the South Island can be enjoyed and dolphins and many sea birds are often seen. Around one hour of the cruise takes you through the Marlborough Sounds and this region of bush covered mountains, small islands, crystal clear waters and secluded bays offer remarkable photographic opportunities. The final leg of the cruise travels through Queen Charlotte Sound before coming to an end in the picturesque town of Picton.

Collect Rental Car

This tour's from price includes an intermediate-sized vehicle, setting you up for comfortable travels. Yet, we understand every adventure is unique! Feel free to select the perfect wheels from our incredible collection of rental cars, spanning from economy hatchbacks to premium SUVs.

Picton to Nelson via Queen Charlotte Drive

The Queen Charlotte Drive follows the Marlborough Sounds coastline between Picton and Havelock. Magnificent views of the Sounds can be had from many vantage points so allow plenty of time to enjoy the scenery. If you can spare the time take the narrow windy road to Portage along Mahau Sound and Kenepuru Sound with their bush clad hillsides and secluded sandy coves.

The small port town of Havelock has a great variety of cafes and restaurants to choose from so plan your journey to arrive in time for lunch. The drive also crosses the Pelorus River and just at this junction is the famous and historic Pelorus Bridge. From here there are a number of forest walks with the most popular being the Pelorus Bridge 30 minute Loop through Beech, Rimu and Totara forest to the swing-bridge.

Departing Pelorus Bridge following the windy roads with view looking over Cable Bay and the Bryant Range until you arrive onto Tasman Bay and the city of Nelson.

Your accommodation: The Hotel Nelson

The Hotel Nelson offers great facilities just 10 minutes walking distance from Nelson City Centre. Well equipped modern units with off street parking.



Day 18



Nelson to Abel Tasman National Park

From Nelson, follow the coastline through several small seaside towns including the popular holiday destination of Kaiteriteri with its magnificent sandy beaches and calm blue waters. Continuing on you'll come to the tiny settlement of Marahau, gateway to the Abel Tasman National Park.

Explore the Nelson and Abel Tasman region

Nelson is a great city to explore on foot. Visit the historic areas, and the famous Cathedral, or relax and enjoy the atmosphere at one of the many cafes on Trafalgar Street. Nelson is also noted for its many artists, and galleries displaying their work can be enjoyed by following one of the Art trails listed locally. Around 45 minutes drive away is Abel Tasman National Park. The region offers countless opportunities to explore for visitors of every age and capability, from enjoying the golden sand beaches and clear warm waters to guided kayaking trips viewing seals and dolphins, to exploring some of New Zealand's finest walking tracks.

Your accommodation: Ocean View Chalets

The Ocean View Chalets are situated on a 50-acre farmlet, slightly elevated and nestled along the bush line with panoramic sea views. Great access the National Park and close to the friendly Marahau village.



Day 19



Abel Tasman National Park

Experience the golden beauty of Abel Tasman National Park, a coastal paradise renowned for its spectacular hiking track, pristine golden beaches, secluded inlets, and private lagoons. With its mild climate and stunning natural environment, it's a cherished destination for New Zealanders nationwide. Why not enjoy a scenic cruise through the Sounds or take a kayaking tour around its many sheltered bays? Relax to the melodious birdsong and get up close to some of the park's many animal residents, including native bats, geckos, birds, marine mammals, fur seals, and dolphins.

SUGGESTED ACTIVITY - Seals, Beach Cruise and Walk

Experience the best of Abel Tasman on this combined beach cruise and walk tour. Cruise into the Tonga Island Marine Reserve and pause to watch the antics of the Resident Fur Seal Colony. After landing at the historic Tonga Quarry Beach, take a two hour, fifteen minute walk over forested land and around the spectacular Bark Bay Estuary, renowned for its cascading waterfalls. Rejoin the cruise at the sheltered golden cove on Medlands Beach.

Your accommodation: Ocean View Chalets

The Ocean View Chalets are situated on a 50-acre farmlet, slightly elevated and nestled along the bush line with panoramic sea views. Great access the National Park and close to the friendly Marahau village.



Day 20



Marahau to Blenheim via Queen Charlotte Drive

The drive takes you through the city of Nelson and along the coast of Tasman Bay towards the Bryant Range. The highway between Nelson and Picton also crosses the Pelorus River and just at this junction is the famous and historic Pelorus Bridge. From here there are a number of forest walks with the most popular being the 30-minute loop through Beech, Rimu, and Totara forest to the swing bridge. Starting in the town of Havelock the Queen Charlotte Drive travels the Marlborough Sounds coastline towards the port town of Picton. Magnificent views of the sounds can be had from many vantage points so allow plenty of time to enjoy the scenery. Queen Charlotte Drive brings you into Picton and it's from here that the Interislander ferries arrive and depart. The small town center has plenty of shops and cafes and the waterfront area is a very pleasant place to spend a few hours watching the activity of the ships. The Edwin Fox Maritime Centre on the wharf is worth a visit with the star attraction being the vessel the Edwin Fox, which is the 9th oldest ship in the world. Just 30 minutes south is Blenheim sitting right at the heart of New Zealand's largest wine-producing region, Marlborough, and is ideally located to enjoy an afternoon sampling of the local produce.

SUGGESTED ACTIVITY - Half Day Marlborough Wine Tour with Sounds Connection

An afternoon among the vines! Be immersed in the Marlborough wine country with the Sounds Connection half day wine tour. Get collected from your accommodation and taken through three or four hand-picked wineries to taste the award-winning produce this region is known for. Hear about the history of winemaking in Marlborough as well as learning the unique processes each winery goes through.

Your accommodation: Blenheim Palms Motel

Located 100 m from the central shops and eateries, the Blenheim Palms Motel offers tasteful individually designed apartment-styled rooms.



Day 21



Blenheim to Kaikōura

Cross Marlborough and head towards one of the most spectacular coastlines of the South Island, the Kaikōura Coast. The road hugs the shore for around 50 kms and offers many chances to view native wildlife. To the east is the South Pacific Ocean and to the west the towering Kaikōura Ranges. Kaikōura Township is a bustling little place with many cafes, restaurants and shops, but the main reason for visiting here is the wildlife and it's one of the only places in New Zealand you can see whales year round.

Your accommodation: The White Morph, Kaikōura

Set on the Esplanade in Kaikōura, The White Morph enjoys commanding views of the ocean and mountains. Just a 10-minute walk into town, The White Morph has been beautifully placed so that you can take in the spectacular scenery of Kaikōura while enjoying the variety of attractions on offer.



Day 22



Kaikōura

Kaikōura is a breathtaking seaside town teeming with marine life and natural beauty. As you wander through this coastal paradise, you'll be enveloped by the fresh sea breeze and the sounds of the ocean. Begin your adventure by observing the lively fur seal colony at the tip of the peninsula. For an unforgettable experience, board a boat to go whale watching and marvel at the majestic whales that call these waters home year-round. If you're feeling adventurous, take the plunge and swim with the playful dusky dolphins in their natural habitat. For bird enthusiasts, Kaikōura offers the chance to get up close with the native albatross, an awe-inspiring sight. The town is rich with attractions, walking tracks, and activities for every visitor. A walk around the Kaikōura Peninsula is a must, where you can explore tide pools teeming with marine life, observe sea creatures basking on the rocks, and watch seabirds soaring above. Be sure to keep a respectful distance from the sleeping sea lions you might encounter along the way. Ohau Point is another highlight, where you can watch fur seals frolic in their natural environment. To delve into Kaikōura's fascinating history, visit Fyfe House. This historic whaler's cottage offers a glimpse into the town's whaling past and its evolution over the years. No trip to Kaikōura is complete without sampling the local seafood. Renowned for having some of the best fish and chips in the country, Kaikōura's eateries serve fresh catches straight from the morning's haul, ensuring a delicious and authentic dining experience. If you need a break from the action, unwind at Lavendyl Lavender Farm. Stroll through the fragrant lavender fields, relax in the serene atmosphere, and browse the gift shop for a variety of lavender products. Kaikōura seamlessly blends adventure, history, and relaxation, making it a perfect destination for travellers seeking a unique and enriching experience.

SUGGESTED ACTIVITY - Ocean's Cabin with Whale Watch Kaikōura

Experience New Zealand's only marine-based whale-watching company. Whale Watch Kaikōura offers a once-in-a-lifetime, up-close encounter with the giant Sperm Whale. You are also likely to encounter New Zealand fur seals, dolphins, and albatross. Depending on the season you may also see Pilot, Blue, and Southern Right whales as well as migrating humpbacks. Often orcas can be spotted here and the world's smallest dolphin, the Hector's, occasionally makes an appearance.

Your accommodation: The White Morph, Kaikōura

Set on the Esplanade in Kaikōura, The White Morph enjoys commanding views of the ocean and mountains. Just a 10-minute walk into town, The White Morph has been beautifully placed so that you can take in the spectacular scenery of Kaikōura while enjoying the variety of attractions on offer.



Day 23



Kaikōura to Christchurch

Travel down the coast before heading inland through the North Canterbury wine region - the Waipara Valley. If you've time on your hands we recommend taking a detour to Hanmer Springs for relaxing dip in its thermal pools. Arriving into Christchurch you'll see a new and improved city, steadily rising from the ruins of the 2011 and 2010 earthquakes.

Your accommodation: Bella Vista Christchurch

Bella Vista Motel Christchurch offers a great range of comfortable modern units with excellent facilities. Enjoy the convenience of being located in close proximity to the Christchurch CBD, shops, entertainment and other activities.



Day 24



Explore Christchurch

Following earthquakes that razed its centre and much of the outlying suburbs, Ōtautahi-Christchurch is well into a billion-dollar makeover. In the middle of the Canterbury Plains, bordering the Pacific Ocean, New Zealand's newest city is an ideal gateway to exploring the middle of the South. Go punting on the Avon River, take a historic tram ride, catch the gondola to the rim of an extinct volcano or do all three! See the world's only Cardboard Cathedral and for nature enthusiasts - wander the renowned Christchurch Botanic Gardens, or head to Oxford Terrace in the city to find a great spot to eat or drink. Drive an hour in any direction to ski, mountain bike, wine taste, whale-watch, bungee jump or play golf. Take the winding Port Hills road to the French settlement of Akaroa & Banks Peninsula and tour the vines in Waipara for an authentic New Zealand wine-tasting experience.

SUGGESTED ACTIVITY - Christchurch Gondola

In the Heathcote Valley, just a 20-minute drive from the heart of Christchurch City, ride the Christchurch Gondola for nearly a kilometer to the collapsed rim of an extinct volcano, which exploded six million years ago. Take in the spectacular panoramic views of the central city, Lyttelton Harbour, Banks Peninsula, Canterbury Plains, and the distant peaks of the Southern Alps. Wander the summit complex, enjoy a coffee or lunch in the cafe, and choose one of many nature walks to explore or visit the Christchurch Discovery Ridge, a dramatic reconstruction of the history of the Port Hills and Christchurch.

Your accommodation: Bella Vista Christchurch

Bella Vista Motel Christchurch offers a great range of comfortable modern units with excellent facilities. Enjoy the convenience of being located in close proximity to the Christchurch CBD, shops, entertainment and other activities.



Day 25



Christchurch to Akaroa

The Banks Peninsula offers a great contrast to the South Island's largest city. Just around a 1 1/2 hours drive from the city centre are rolling green hills, streams, golden sand beaches and small settlements that offer a unique insight into New Zealand's history and development. Just on the other side of the Port Hills is Lyttelton, a busy port town that was crucial to the development of Christchurch and the Canterbury Plains. Following the road around the beautiful natural harbour the names, such as Magazine Bay, Battery Point, Corsair Point and Governors Bay, remind of the importance the navy placed on this harbour.

The Banks Peninsula itself is actually the remains of a long extinct volcano, the rim of which collapsed some time ago allowing the sea to flood into and create what is now the Akaroa Harbour. In 1840 French colonists settled in Akaroa in a bid to stake a claim for the South Island. Unbeknownst the British had already declared sovereignty and a long drawn out dispute ensued with the British eventually being given government. However the French stayed and made this stunning part of the South Pacific their home and still to this day the town boasts French street names and every year a French Festival is held.

The Harbour itself is teeming with wildlife and a nature cruise is a must do activity. One of the world's smallest and rarest dolphins, Hector's dolphin, are often seen and cruises also offer excursions with the chance to swim amongst them.

SUGGESTED ACTIVITY - Swimming with Dolphins Cruise with Black Cat

Akaroa Harbour formed as a result of an extinct volcanic crater being flooded by the Pacific Ocean. It's a beautiful place with sheer cliffs and the picturesque township of Akaroa at its heart. New Zealand's only native dolphin, Hector's dolphin, makes this sheltered harbor its home, and it's here you can see them and if you wish actually swim with these incredible creatures. Following a 12-hour briefing, you depart on your cruise of which around 1 hour is spent in the water with the dolphins. Black Cat Cruises has been operating since 1985 and their success rate at sighting dolphins is over 98%. Swimming with dolphins is not always possible either due to sea conditions, the dolphins' willingness to stay and play, and other environmental reasons such as not swimming when there are babies around. They still manage to swim though on over 80% of their tours. All equipment is provided and all you need to bring along is your swimming costume and a towel.

SUGGESTED ACTIVITY - Akaroa Day Tour & Cruise with Leisure Tours - Lunch Included

Travel the scenic route to Akaroa via Banks Peninsula. Stop for spectacular views over the Akaroa Harbour. You'll then take a two-hour cruise through Akaroa Harbour for a chance to see this quaint French settlement from the sea as well as dolphins, penguins and seals. On the return journey to Christchurch, you will visit the cheese factory at Barry's Bay and sample some of New Zealand's finest cheese.

Your accommodation: Criterion Motel

The Criterion Motel offers studio apartments with spectacular views over Akaroa Harbour. You're also just a short walk from the fantastic cafes and restaurants that Akaroa offers.



Day 26



Akaroa to Aoraki Mt Cook National Park

Today you head into the heart of the South Island. Crossing the vast Canterbury Plains along the inland scenic route the first township of Geraldine offers an ideal refreshment stop before you head into Mackenzie country.

Passing through places such as Beautiful Valley it's not hard to understand where the names originate. Ascending Burkes Pass and onto the high country plateau and the picturesque town of Lake Tekapo, the first of the large Southern Lakes. It's a great place to take a scenic flight, enjoy a guided horse trek, a boat trip on the pristine lake, or just enjoy the magnificent views.

Lake Pukaki is just another 30 minutes from Lake Tekapo and from here you can be rewarded with spectacular views of the full length of the lake and into Aoraki Mt Cook National Park. In Mt Cook Village a myriad of activities are available from glacier landings by ski plane or helicopter, kayaking on a glacial lake and a host of walks to suit all abilities and time frames. At The Hermitage Hotel, the Sir Edmund Hillary Alpine Centre is a must-see.

SUGGESTED ACTIVITY - Glacier Explorers

Experience 500-year-old icebergs up close on the Aoraki-Mt Cook terminal lake. The Glacier Explorers tour is the only one of its kind in New Zealand and one of only three in the world! Very few glaciers terminate into lakes and even fewer of them are accessible. See towering ice cliffs and floating icebergs from the safety of a specially designed boat. These boats provide a safe way to view unseen and inaccessible areas of New Zealand's largest glacier The Tasman.

Your accommodation: Mt Cook Motel

Mt Cook Motel, nestled in the heart of Mt. Cook Village, offers spacious self-contained units that provide comfort and convenience. Each unit is surrounded by breathtaking alpine mountain views, making it the perfect retreat for nature lovers and adventurers alike.



Day 27



Aoraki Mt Cook National Park to Dunedin

Leave Aoraki Mt Cook National Park and travel past Twizel, one of the locations for the Lord of the Rings films. Go through Omarama, the gliding capital of New Zealand. Continue down the Waitaki Valley follow the hydro power generating system to the rural town of Kurow, home to the divine Valli Wines. Stop for a sip or continue on to the east coast. Stretch your legs in Oamaru, known for its white stone buildings constructed with the local Oamaru Stone and Steampunk influence. If you were a little late off the mark this morning you may get the chance to see the blue penguins come ashore at dusk. Continue south down the coast to Moeraki, and take a detour towards the beach to see the Moeraki Boulders, a unique geological feature well worth a look. As you arrive in Dunedin, take in the city's Edwardian and Scottish heritage reflected in the buildings around the city centre The Octagon.

Your accommodation: Motel on York

Motel on York is located in the heart of Dunedin city. The property offers superior accommodation only 300 metres away from cafes and restaurants.



Day 28



Explore Dunedin and the Otago Peninsula

Known as the Edinburgh of the South, Dunedin City has a heavy Scottish influence. Surrounded by rugged coastal plains and windswept beaches it's home to an eclectic mix of historical and modern architecture as well as industrial technology. Renowned for its Flemish Baroque-inspired 'gingerbread house' Railway Station, this university town is bustling with life. Head to the Saturday farmers market held in the aforementioned railway grounds for a taste of organic produce, handmade crepes and local honey. Explore the many cafes and wine bars in The Octagon, then continue on a self-guided walking tour of the internationally acclaimed Street Art dotted around the city. Drive to the coast and watch the freighters passing in the distance while you sunbathe, or hire a mountain bike and test your legs on one of the many trails available in the area. For a more immersive historical experience, follow the coast to New Zealand's only castle, Larnach Castle. On your way back be sure to head to the Otago Peninsula to see the largest mainland Albatross colony in the world.

SUGGESTED ACTIVITY - Penguin Tour with The Opera

Learn about the endangered Yellow Eyed Penguin when you visit The Opera - Otago Peninsula Eco Restoration Alliance, a private conservation reserve dedicated to ensuring the survival of this unique species. The project is entirely funded by guided tours which allow the conservation team to engage in habitat restoration, predator control, a research program, and an on-site rehabilitation facility.

On your tour, you will learn about the issues the Yellow Eyed Penguin faces, their life cycle, and how the project is carried out. Your experience will begin in a theatre before moving to the rehabilitation center where penguins may be seen up close. You'll take a short bus trip over to the reserve and be led on foot approx 2km by your guide through a system of covered trenches to view hides that allow access to the living and breeding habitat of this very shy bird without disturbing them. There is also an opportunity to meet other animals that reside in the reserve including fur seals, sea lions, and several species of shore and land birds.

SUGGESTED ACTIVITY - Albatross Classic Tour with Royal Albatross Centre

This tour focuses on the Royal Albatrosses and wildlife that inhabit Pukekura (Taiaroa Head). Begin with a short film, then enjoy the informative commentary provided by your guide about albatrosses as you visit the observatory to see nesting albatrosses in their natural habitat.

SUGGESTED ACTIVITY - Larnach Castle and Gardens

Larnach Castle, New Zealand's only castle, was built in 1871 by politician and merchant William Larnach, a visionary who played a key role in shaping the country's early history. Constructed for his beloved first wife, Eliza, the castle's shell took 200 workmen three years to complete, followed by twelve years of intricate interior craftsmanship. Perched high on the Otago Peninsula, the castle offers stunning views over Dunedin City. Its gardens hold International Garden of Significance status and feature a unique collection of antiques, including a rare nine-piece Totara knot suite. The Ballroom Café provides the perfect spot to relax and enjoy refreshments while reflecting on your visit. The ballroom itself has a fascinating history, having once served as an asylum, an antique sales room, and even a sheep pen before its beautiful restoration. With a self-guided tour, you can explore the castle and gardens at your own pace.

Your accommodation: Motel on York

Motel on York is located in the heart of Dunedin city. The property offers superior accommodation only 300 metres away from cafes and restaurants.



Day 29



Dunedin to Invercargill via the Southern Scenic Route

The scenic route from Dunedin to Invercargill takes you via the Southern Scenic Route. Well signposted from Dunedin the route takes you along the rugged Otago coastline and its many secluded beaches and bays and many are great places to spot New Zealand fur seals and sea lions. At Nugget Point, penguins and elephant seals can also be spotted. Curio Bay is home to a 160 million year old fossilised forest. Get an early start for this drive as you can easily pass the whole day exploring the many attractions along the Southern Scenic Route.

Your accommodation: The Lodges At Transport World

Offering six boutique apartment units that are unique, spacious and packed full of supreme comfort. The perfect accommodation option if you looking for a sanctuary to relax and recharge. The permanent onsite managers provide a warm and welcoming atmosphere and ensure every guest receives superb personal attention. Easy to find The Lodges At Transport World are conveniently located directly across the road from Bill Richardson Transport World.



Day 30



Invercargill to Stewart Island with Stewart Island flights

The first air transport to connect Stewart Island and the mainland was Stewart Island Air Service, operating an amphibian aircraft. The plane landed in the harbour and taxied up the beach to the local hotel. Twenty years ago this was succeeded by Southern Air Ltd with the establishment of an airstrip at Ryan's Creek. Today, Stewart Island Flights is a locally owned and operated business who maintain scheduled flights linking Stewart Island and Invercargill as well as a number of exciting alternatives providing access to the more remote reaches of the island. They operate two Britten Norman Islanders, two Piper Cherokee Six and one Cessna 185.

As well as offering scheduled flights between Invercargill and Stewart Island scenic flights can also be arranged on demand to suit your schedule.

Stewart Island - Rakiura National Park

Stewart Island, or Rakiura (meaning "Glowing Sky" in Māori), is New Zealand's third-largest island, located just 30 km south of the South Island across the Foveaux Strait. Despite its size, the island is largely uninhabited, with fewer than 400 residents living primarily around Halfmoon Bay. The island's untouched nature is its defining feature. Approximately 85% of its 1,746 km² area is Rakiura National Park, established in 2002. This protected wilderness is a paradise for those seeking a genuine escape. The island's landscape is diverse, ranging from undulating, forested hills to a coastline featuring sandy beaches, sheer cliffs, and extensive wetlands. The highest point is Mount Anglem/Hananui, at 981 meters. The native bush is home to a rich variety of birdlife, and the surrounding crystal-clear waters teem with marine life, making the island a prime spot for fishing and wildlife watching.

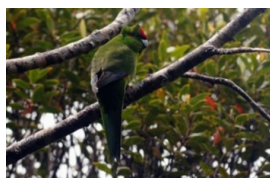
A major attraction is Ulva Island, a nearby predator-free sanctuary for rare and endangered bird species and native plants. With only 28 km of roads and 280 km of walking tracks, Stewart Island is all about immersing yourself in its natural, unspoiled wilderness, stunning sunsets, and aurora displays, which inspired the island's Māori name.

Your accommodation: Kaka Retreat

Nestled amongst beautiful native bush, Kaka Retreat guests can appreciate the peace and tranquillity of a unique island setting where silence is broken only by the calls of the Tui, Fantail, Kakariki birds and, of course, the infamous cheeky native parrot, the Kaka.



Day 31



Ulva Island

Ulva Island is a predator-free sanctuary just 12 minutes by water taxi from Golden Bay on Stewart Island. Sitting in Paterson Inlet, the island is just 269 hectares and has no permanent human inhabitants. Some great, well-signposted and easy paths allow you to spend as little time as you wish or the whole day. Some of the best golden sand beaches in the South Island can be found here, but the real attraction is the flora and fauna. Following some great conservation work, Ulva Island is now predator-free, which means it's a safe place for many rare and endangered native species, including kiwi, the rare South Island saddleback, Stewart Island robin, the inquisitive weak, yellowhead, rifleman, bellbirds, and kaka, to name a few. Here you will also find some of the best examples of native podocarp forest anywhere, and the hugely varied flora is worth the visit alone. Access is easy, just arrange a water taxi to take you from Golden Bay and arrange a collection time to be picked up. About 3 hours allows you to comfortably explore all the tracks on the island.

Ulva Island Explorer

A leisurely cruise of beautiful Paterson Inlet and a guided walk in the renowned bird sanctuary of Ulva Island. The cruise showcases some stunning scenery including the hidden coves and unspoilt beaches of Paterson Inlet. The local guides are passionate about this area and provide informative commentary during the scenic cruise. While on board look out for fur seals and penguins – there are a lot of them around. At Ulva Island there's a 45 minute, easy guided walk. The island is a renowned wildlife sanctuary where many rare and endangered native species of birdlife and plants flourish in a predator free environment. Home to weka (native woodhen), bush robins, rare saddlebacks and yellowheads among other species. The tracks are well-formed and suitable for most ages and fitness levels and small group sizes make it highly personalised.

Includes Picnic Lunch.

Your accommodation: Kaka Retreat

Nestled amongst beautiful native bush, Kaka Retreat guests can appreciate the peace and tranquillity of a unique island setting where silence is broken only by the calls of the Tui, Fantail, Kakariki birds and, of course, the infamous cheeky native parrot, the Kaka.

Meals included: Lunch



Day 32



Stewart Island to Invercargill with Stewart Island flights

The first air transport to connect Stewart Island and the mainland was Stewart Island Air Service, operating an amphibian aircraft. The plane landed in the harbour and taxied up the beach to the local hotel. Twenty years ago this was succeeded by Southern Air Ltd with the establishment of an airstrip at Ryan's Creek. Today, Stewart Island Flights is a locally owned and operated business who maintain scheduled flights linking Stewart Island and Invercargill as well as a number of exciting alternatives providing access to the more remote reaches of the island. They operate two Britten Norman Islanders, two Piper Cherokee Six and one Cessna 185.

As well as offering scheduled flights between Invercargill and Stewart Island scenic flights can also be arranged on demand to suit your schedule.

Invercargill to Te Anau via Southern Scenic Route

Taking the Southern Scenic Route the drive from Invercargill to Te Anau passes through some wonderful and often overlooked regions of Southland. Riverton is Southland's oldest community established by whalers in the 1830's and many of the original cottages have survived throughout the town. The Riverton Early Settlers Museum tells the story well. Orepuki on the coast was once 'almost' a gold town but the fine dust proved too hard to extract commercially. You can still sometimes see gold dust in the beach sand at Monkey Bay. The early sawmilling settlement of Tautapere is next. Known as the 'hole in the bush' the town features an attractive domain. A little further north is the Clifden suspension bridge which dates back to 1899. The Blackmount Road offers some great side trips if you have the time and one in particular is the 50 kilometre round trip to Lake Haruoko, New Zealand's deepest lake. The Blackmount Road continues to the small township of Manapouri, the departure point for cruises to Doubtful Sound. Te Anau the gateway to Milford Sound is just a further 20 kilometres north.

Your accommodation: Lakefront Lodge

Stylish self-contained motel units less than a minute walk from Te Anau Lakefront. Enjoy a close walk to shops, cafes and restaurants.



Day 33



Te Anau to Milford Sound, returning to Te Anau

The magnificent Milford Road leading to Milford Sound offers some of the most beautiful and iconic scenery in the country. Countless photo opportunities mean this drive should not be rushed. From crystal clear lakes and towering mountains to lush glacier-formed meadows, this area is abundant with picture-perfect scenes. Continue on through the Homer Tunnel, an engineering marvel at 1219 meters long. Arriving in the village of Milford, you will be greeted with an amazing view of Mitre Peak. A day cruise into the heart of the sound is not to be missed. You'll learn about how this magnificent area was formed and experience the wonder of the falls that line the Fjord before back-tracking the way you came.

Milford Sound Cruise with Real NZ - Lunch Included

Get up close and personal with Milford Sound on a leisurely cruise of this spectacular fiord. From thundering waterfalls to sky-high mountains to lush rainforests, Milford has it all. Experience the spray of a waterfall as you cruise close to sheer rock faces. Informative, participative and relaxed, this is the perfect way to experience Milford Sound to the fullest.

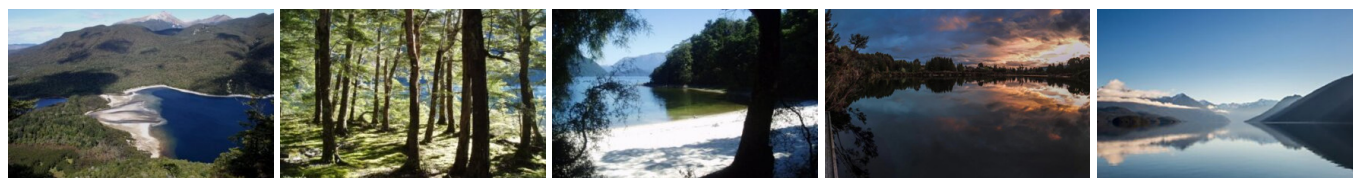
Your accommodation: Lakefront Lodge

Stylish self-contained motel units less than a minute walk from Te Anau Lakefront. Enjoy a close walk to shops, cafes and restaurants.

Meals included: Lunch



Day 34



Te Anau to Manapouri

This short drive takes you along the lake edge of Te Anau and across lush southern farmlands to the small township of Lake Manapouri, gateway to Doubtful Sound.

Doubtful Sound Wilderness Cruise from Manapouri

From Pearl Harbour, Manapouri, you cruise across picturesque Lake Manapouri to West Arm and then travel by coach over Wilmot Pass through dense rainforest. There are opportunities along the way to examine plant life and view the spectacular scenery. Once at Doubtful Sound you board the catamaran, Commander Peak, for a 3 hour cruise of beautiful Doubtful Sound to the Tasman Sea. On board, there is excellent viewing of waterfalls, rainforest and mountains. Of particular interest, if sighted, are fur seals basking on the rocks, or a resident pod of bottlenose dolphins. Rare Fiordland crested penguins are sometimes encountered in the right season. An interesting onboard commentary keeps you informed and on the return journey, the vessel's engines are turned off and visitors are treated to the 'Sound of Silence'. Includes picnic boxed lunch.

Manapouri to Te Anau

The gateway to the Fiordland National Park, Te Anau sits on the shores of the 345 square kilometre Lake Te Anau which reaches depths of 417 metres. Te Anau Township is the starting point for many walking tracks including the Milford Track and the Kepler Track. The Milford road originates here and this is arguably one of the most scenic stretches of highway in New Zealand.

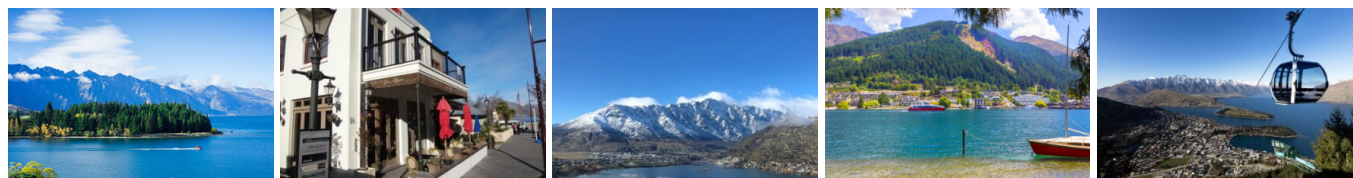
Your accommodation: Lakefront Lodge

Stylish self-contained motel units less than a minute walk from Te Anau Lakefront. Enjoy a close walk to shops, cafes and restaurants.

Meals included: Lunch



Day 35



Te Anau to Queenstown

Journey across expansive tussock lands en route to Queenstown. Pass through Mossburn, renowned as the deer capital of New Zealand, and continue through the picturesque Southland countryside. As the road begins to trace the edge of Lake Wakatipu, marvel at the breathtaking views from the Devil's Staircase. Finally, approach Queenstown, the adventure capital of New Zealand, with the Remarkables mountain range standing majestically in the backdrop.

Your accommodation: Scenic Suites Queenstown

Scenic Suites Queenstown offers guests exquisite style and comfort, with a selection of rooms having spectacular views over Lake Wakatipu and the Southern Alps. The hotel prides itself on its 4-star hospitality that will make your stay in Queenstown even more memorable.



Day 36



Explore Queenstown

Well-known as New Zealand's 'adventure capital', Queenstown is home to a range of adventures, from the world's first and most famous bungy jumps to jet boat thrills, white-water rafting, and skydiving. However, Queenstown offers far more than a fast-paced, action-packed holiday. Settled on the shores of beautiful Lake Wakatipu beneath a soaring panorama of the Remarkables Mountain Range, this alpine town is surrounded by many historic, gastronomic, and scenic wonders. Take a stroll through the beautiful lakefront parks and gardens, browse through market stalls on weekends, dine in wonderful al-fresco restaurants, or ride on the 100-year-old historic Steamship - TSS Earnslaw to Walter Peak Station. Take the Queenstown Gondola up to Bob's Peak and soak up the panoramic views of the magnificent lake and mountain ranges. And after all of that, if you do want the adrenaline rush, Queenstown is known for taking your pick from the Shotover Jet, Canyon Swing, Zipline, Luge, or Heli-hike.

SUGGESTED ACTIVITY - Gondola and 3 Luge Rides with Skyline Queenstown

In the heart of Queenstown, located 450 metres above town in the Ben Lomond Scenic Reserve is the Skyline Complex. A gondola ride to the summit makes for awe-inspiring views of the city surround. Arrive at the complex and wander the outside viewing decks for a picture perfect outlook. Then onto the Luge! The 800 metre luge track offers an exhilarating journey through banked corners, tunnels and dippers.

SUGGESTED ACTIVITY - Shotover Jet Canyon Jet Boat Ride

Shotover Jet is the only company permitted to operate in the Shotover River Canyons. It's a thrilling ride! Skim past rocky outcrops at close range in your Shotover Jet 'Big Red', as you twist and turn through the narrow canyons at breathtaking speeds. And a major highlight - hold tight for the world-famous Shotover Jet full 360-degree spins! It is important you read and understand the risks associated with this activity. For more information please see [here](#).

SUGGESTED ACTIVITY - TSS Earnslaw Cruise and Walter Peak Gourmet BBQ Dinner

Enjoy a quintessential Kiwi experience, a delicious gourmet BBQ buffet meal, and a farm demonstration in a stunning lakeside setting. Take in the stunning views of Lake Wakatipu and its surroundings as you cruise across the lake to the historic Walter Peak high country farm aboard the TSS Earnslaw Steamship. Enjoy the ambiance of the heart of the stately homestead while your Colonel's Homestead Restaurant chef prepares a gourmet BBQ dinner. Your seasonal menu includes an extensive selection of local New Zealand produce, including succulent meats and a selection of delicious vegetables and salads. Complete your meal with your choice of delicious desserts, or New Zealand cheeses. After dinner, watch the farm dogs in action with a sheep-herding demonstration and say hello to the other farm animals. Finally, cruise home under the southern stars and enjoy the fresh night air as the lights of Queenstown draw ever closer.

Your accommodation: Scenic Suites Queenstown

Scenic Suites Queenstown offers guests exquisite style and comfort, with a selection of rooms having spectacular views over Lake Wakatipu and the Southern Alps. The hotel prides itself on its 4-star hospitality that will make your stay in Queenstown even more memorable.



Day 37



Queenstown to Wanaka

Leaving Queenstown you'll drive over New Zealand's highest sealed road, the Crown Range before arriving into the resort town of Wanaka.

SUGGESTED ACTIVITY - Wanaka Wine Tours Boutique Central Otago Wine Trail

This small group wine tour (maximum 8) offers a relaxed and personal introduction to the wines and scenery of the Central Otago region. This tour is a great way to explore award-winning vineyards hidden amongst the rugged landscape of Central Otago. Visit and enjoy tastings at 4 Central Otago vineyards including a delicious mid-afternoon platter to enjoy with your tastings. You'll also discover the history of the region with a visit to Old Cromwell Town, a charming heritage precinct that has been revitalised into a boutique arts and crafts village.

Your accommodation: The Moorings Wanaka

The Moorings Apartments are just 5 minutes' from Wanaka's town centre and offer lakeside accommodation with open views of the mountains and stunning Lake Wanaka. It's an easy walk to the bustling main street of Wanaka or take a stroll around the lake.



Day 38



Wānaka

Nestled on the shores of one of New Zealand's largest lakes and framed by the stunning Southern Alps. Wānaka is an alpine village that perfectly blends adventure, breathtaking scenery, and a laid-back vibe. In winter, Wānaka transforms into a bustling hub as snow sports enthusiasts flock to its renowned ski fields, Treble Cone and Cardrona, as well as cross-country at Snow Farm. As the gateway to Mt Aspiring National Park, it offers endless opportunities for hikers, with trails winding through remote wilderness, majestic peaks, and serene river valleys. Closer to town, you'll find a network of scenic walking tracks, such as the popular Mount Iron Track, and from the lakefront, it is a short walk to "That Wanaka Tree". For thrill-seekers, Wānaka is an adrenaline playground, offering skydiving, paragliding, downhill biking, rock climbing, and jet boating.

SUGGESTED ACTIVITY - Easy Bike Tour with Discover Wanaka

Our professional Wanaka bike guides take the hassle out of organising a family bike tour. We provide all the equipment, including bikes and helmets for both adults and children. The tour follows one of Wanaka's well-known rivers, offering plenty to see and do. You'll pass by a standing wave, where you can often spot people kayaking or river surfing. The crystal-clear water reveals our local trout population, and the tour concludes with a spectacular crossing of a swing bridge spanning the river. This easy family bike tour takes you along a wide, well-maintained trail. Suitable for ages 7 to 70, the one-way route is mostly downhill with a gentle gradient.

SUGGESTED ACTIVITY - Wanaka Wine Tours Classic Wine Tour

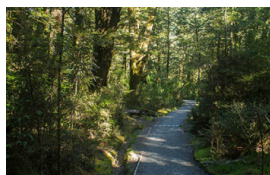
The Classic Full Day Wine Tour is a small group tour (maximum 8) that explores the scenery, history, food and wines of Central Otago. Enjoy an unhurried amble through five of the region's finest wineries, pausing only to admire the ever-present views. Savour the unique atmosphere of the arts, crafts and history of Old Cromwell Town and share the unforgettable indulgence of a gourmet platter lunch.

Your accommodation: The Moorings Wanaka

The Moorings Apartments are just 5 minutes' from Wanaka's town centre and offer lakeside accommodation with open views of the mountains and stunning Lake Wanaka. It's an easy walk to the bustling main street of Wanaka or take a stroll around the lake.



Day 39



Wanaka to Franz Josef

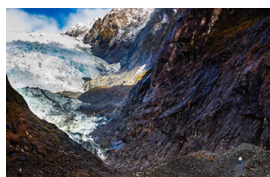
The route follows the shores of Lakes Wanaka and Hawea before you enter the village of Makarora, the gateway to Mt. Aspiring National Park. The Blue Pools, just outside Makarora, are a wonderful 30-minute walk through pristine native beech forest. Descending into Mt. Aspiring National Park and towards the Haast Pass, crashing rivers and waterfalls are around every corner. Crossing the Haast River you are now truly on the wild West Coast, a 600-kilometre stretch of bush, rainforest, and podocarp forest. Paringa Salmon Farm is a great halfway stop to stretch your legs, feed the fish, and stop for lunch or refreshment. First Fox Glacier welcomes you to the glacier region and Franz Josef township is just a further 45 minutes' drive over the impressive Fox Hills.

Your accommodation: Punga Grove Motel & Suites

Punga Grove is right in the heart of Franz Josef Glacier village stylish accommodation in a beautiful rainforest setting.



Day 40



Explore Franz Josef

Franz Josef is a small yet lively town in the heart of New Zealand's West Coast, best known for its spectacular 12 km-long glacier. The township is surrounded by lush, rainforest-clad mountains and has a vibrant atmosphere with plenty to explore. A variety of scenic walking trails offer incredible views of the glacier, but for a truly up-close experience, a licensed helicopter tour is the only way to set foot on the ice. Beyond the glacier, unwind in the rejuvenating Hot Pools or visit the West Coast Wildlife Centre to spot rare kiwi birds. If you're in the mood for a more relaxed day, the township is home to charming souvenir and gift shops, as well as great dining spots like SnakeBite Brewery and King Tiger. Whether you're chasing adventure or relaxation, Franz Josef is a stunning blend of wild beauty and welcoming hospitality.

Franz Josef Nature Tour with Glacier Valley Eco Tours

Nestled in thick historic West Coast forest and a stone's throw from wild black sand beaches, this is one of the world's most unusual glaciers. Beautiful blue skies or magical misty rain, whatever the weather - you will feel like you are in Narnia or LOTR.

With easy walking at your pace, information on glaciology, geology, geomorphology, flora and fauna, local legends, history, and small guided groups with fantastic guides, you will experience this glacier in style and in the best hands with the only local company. Wander past glacier rivers and streams and through beautiful podocarp forest; discover hidden natural treasures such as native snails, wild native mushrooms, and dozens of species of native orchids; listen to native bird song and waterfalls; see if you can spot a Chamois or a Tahr on the huge snow-capped mountains above while drinking a cup of tea and talking one-on-one with your guide.

SUGGESTED ACTIVITY - Franz Josef Glacier Helihike with Franz Josef Glacier Guides

After a thrilling scenic flight, high above the rugged terrain, you will land on the glacier, ready to undertake a guided glacier hike. Your friendly guide will lead you through some of the most pristine and awe-inspiring glacial scenery in the world. Your guide will choose your route carefully as you go and, with an eye for the most spectacular ice formations, you'll soon be making your way through an extraordinary landscape of towering peaks and glistening blue ice. It is important you read and understand the risks associated with this activity prior to travel. For more information please see [here](#).

Your accommodation: Punga Grove Motel & Suites

Punga Grove is right in the heart of Franz Josef Glacier village stylish accommodation in a beautiful rainforest setting.



Day 41



Franz Josef to Greymouth Train Station

Head north along the mighty West Coast highway you pass through ancient temperate rainforests while getting sneak peeks of the wild coast beach occasionally. Whataroa is the next town where you can see one of the world's rarest birds, the Kōtuku - White Heron. The Kōtuku nest at the Waitangi Roto Nature Reserve, only accessible with a guided tour from October to March. The next town is Ross which is the site of an old gold mining settlement where the local information centre offers you the chance to pan for gold. Hokitika is a great place to explore craft and gift stores and head to the coast and take in the endless sea views. The Pounamu-Greenstone on offer in Hokitika is probably some of the best you will see in the country. Continue on to Greymouth, the largest town on the West Coast and the starting point for the next leg of your journey the TranzAlpine Scenic Train. Drop your rental car at the Greymouth Train Station depot located at the train station building before boarding your train to Christchurch.

TranzAlpine Scenic Train: Greymouth to Christchurch

Considered one of the world's great train journeys, the TranzAlpine Scenic Train takes you from Greymouth to Christchurch. Travel across the South Island from the west to the east coast through Arthur's Pass National Park. From the comfort of your carriage see lush beech forest, deep river valleys and the spectacular peaks of the Southern Alps. Descend to the windswept Canterbury Plains before arriving in the city of Christchurch.

Shared Transfer from Christchurch Train Station to Christchurch CBD Accommodation with Christchurch Touring Company

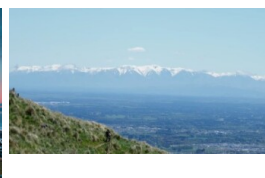
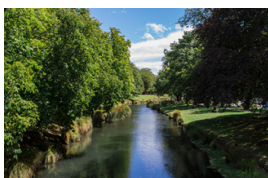
On arrival at the Christchurch railway station, you will be met by a driver and transferred to your Christchurch accommodation.

Your accommodation: Bella Vista Christchurch

Bella Vista Motel Christchurch offers a great range of comfortable modern units with excellent facilities. Enjoy the convenience of being located in close proximity to the Christchurch CBD, shops, entertainment and other activities.



Day 42



Private Transfer from Christchurch Accommodation to Christchurch Airport with Christchurch Touring Company

A private transfer will collect you from your accommodation and transfer you to Christchurch Airport in time for your departing flight.

Farewell from Aotearoa-New Zealand

Bid farewell to Aotearoa-New Zealand, taking with you unforgettable memories of its breathtaking landscapes and incredible adventures. In Maori, it is said mā te wā, which is not goodbye, it is see you soon!

Tour details

Departures:	Daily
Tour type:	Nationwide Self Drive
Starts:	Auckland
Finishes:	Christchurch
Tour length:	42
Accommodation:	Motels
Car/transport type:	

Included activities

Includes	Private airport transfers
Includes	Private train station transfers
Includes	TranzAlpine Train from Greymouth to Christchurch
Includes	Interislander ferry crossing
Includes	Hole in the Rock Dolphin Cruise
Includes	Mitai Maori Village Concert & Buffet Dinner, Rotorua
Includes	Waitomo Glow Worm Caves
Includes	Huka Falls Jet Boat Tour
Includes	Doubtful Sound Wilderness Cruise
Includes	Real Journeys Milford Sound Cruise
Includes	Return Stewart Island flights
Includes	Ulva Island guided walk

Accommodation summary

Day 1	Adina CityLife Auckland [Formerly Heritage CityLife Auckland]
Day 2	Adina CityLife Auckland [Formerly Heritage CityLife Auckland]
Day 3	Sea Spray Suites
Day 4	Sea Spray Suites
Day 5	Snells Beach Motel
Day 6	Coromandel Court Motel
Day 7	Pacific Harbour Villas
Day 8	Silver Fern Suites & Spa
Day 9	Silver Fern Suites & Spa
Day 10	Waitomo Caves Guest Lodge
Day 11	Beechtree Motel
Day 12	Bella Vista Napier
Day 13	Bella Vista Napier
Day 14	The Claremont, Martinborough
Day 15	Adina CityLife Wellington [Formerly Heritage CityLife Wellington]
Day 16	Adina CityLife Wellington [Formerly Heritage CityLife Wellington]
Day 17	The Hotel Nelson
Day 18	Ocean View Chalets
Day 19	Ocean View Chalets
Day 20	Blenheim Palms Motel
Day 21	The White Morph, Kaikōura
Day 22	The White Morph, Kaikōura
Day 23	Bella Vista Christchurch
Day 24	Bella Vista Christchurch
Day 25	Criterion Motel

Day 26	Mt Cook Motel
Day 27	Motel on York
Day 28	Motel on York
Day 29	The Lodges At Transport World
Day 30	Kaka Retreat
Day 31	Kaka Retreat
Day 32	Lakefront Lodge
Day 33	Lakefront Lodge
Day 34	Lakefront Lodge
Day 35	Scenic Suites Queenstown
Day 36	Scenic Suites Queenstown
Day 37	The Moorings Wanaka
Day 38	The Moorings Wanaka
Day 39	Punga Grove Motel & Suites
Day 40	Punga Grove Motel & Suites
Day 41	Bella Vista Christchurch