

Southern Ski Highway Tour

It's a ski tour road trip! Starting in Christchurch you'll follow the Southern Alps and hit up the big guns of Mt Hutt and Coronet Peak. During this 9 day roadie, you'll also explore the local scene at the "Clubbies" Ski Areas, Mt Dobson, Roundhill and Ohau.

Starts in: Christchurch
Finishes in: Queenstown
Length: 9days / 8nights
Accommodation: Motels
Can be customised: Yes

This itinerary can be customised to suit you perfectly. We can add more days, remove days, change accommodations, mix it up, add activities to suit your interests or simply design and create something from scratch. Call us today to get your custom New Zealand itinerary underway.



Inclusions:

Includes: Late model rental cars
Includes: Fully inclusive rental car insurance (excess may apply)
Includes: Unlimited kms
Includes: Afterhours emergency support while touring
Included activity: 5 Day Lift Superpass with NZ Ski

Day 1



Collect Rental Car

Choose a car to best suit your needs from our fantastic rental car range. From compact economy, hatchbacks to prestige SUVs.

Christchurch to Methven

Heading out of Christchurch, you will drive through the town of Rakaia which sits on the southern side of the Rakaia River, and is 'the salmon capital of New Zealand'. The Rakaia bridge spans 1.8 kilometres of one of the world's best examples of a 'braided' river system. Next, it's onto Ashburton, which sits between the Rakaia and Rangitata rivers. It is a large town that serves the local rural community. It has about six museums and some excellent craft galleries. Trout fishing is the local obsession, and the ski fields of Mt Hutt are an easy drive away. Point your car towards the Southern Alps and you'll be in Methven in about half an hour. The checkerboard fields of the Canterbury Plains provide soothing scenery all the way. The village of Methven is a mecca for those who love outdoor sports.

Your accommodation: Methven Motels and Apartments

Contemporary architectural design melded with immaculate presentation, tasteful decor and breathtaking views of Mount Hutt and surrounding peaks makes Methven Motels and Apartments the place to stay in Methven.



Day 2



5 Day Lift Superpass with NZ Ski

The New Zealand Superpass is the most flexible lift pass in New Zealand, giving you access to Coronet Peak, The Remarkables, Mt Hutt along with Snowplanet, Turoa, Whakapapa, Porters, Roundhill, Mt Dobson, and Ohau ski areas. Get more choice, more fun, and more snow time with your New Zealand Superpass, and make the most of your New Zealand holiday!

With 5 days of New Zealand Superpasses, you've got lift access to New Zealand's premier ski areas plus the fun and excitement of a range of off-mountain attractions around New Zealand. You can mix it up a little and ski a day at the different alpine resorts or maybe you've got your eye on a run that you want to conquer over 5 days. Want to ski a little longer, don't own your own gear or snow clothing, or not sure if your skills are up to scratch? No worries, chat to us about adding additional days, rentals, or lessons.

Mt Hutt Ski Field

Mt Hutt has been voted New Zealand's best ski resort for seven years running at the World Ski Awards. A true alpine experience, with wide-open terrain, leg-burning runs, monster snowfalls, and spectacular views. You've not skied in New Zealand until you've skied Hutt!

Mt Hutt is your go-to for epic freestyle skiing and snowboarding with four terrain park zones featuring jumps and features for all abilities and with the Summit chairlift is an easy way to access great backcountry riding and skiing.

Mt Hutt offers 365 hectares of skiable terrain for you to explore, with the longest run, a lengthy 2km. With its mixture of 25% beginners, 50% intermediate, and 25% advanced terrain there is a range of trails for everyone to conquer. Food and beverages are available at Sixteen10 Espresso Bar, Ski High Cafe, and Opuke Kai which offers mulled wine and an a la carte experience on the mountain, where you can recharge your batteries for your next run. For visitors to the South Island, it's easy to hire all the gear you need on the mountain, so all you need to bring is your enthusiasm. For the littlies, there is a licensed child's creche for 3 months to 5yrs and a snow sports school for both kids and adults who are finding their snow legs.

Your accommodation: Methven Motels and Apartments

Contemporary architectural design melded with immaculate presentation, tasteful decor and breathtaking views of Mount Hutt and surrounding peaks makes Methven Motels and Apartments the place to stay in Methven.



Day 3



Methven to Lake Tekapo

Hugging the foothills of the Southern Alps and Peel Forest you arrive into the township of Geraldine, another ideal refreshment stop (local ice cream, cheeses, bakery etc) before you head into the Mackenzie country. Turning west you continue towards the high country and passing through places such as Beautiful Valley it's not hard to understand how the names originated. Ascending Burkes Pass and onto the high country plateau and the picturesque town of Lake Tekapo, the first of the large Southern Lakes. It's a great place to take a scenic flight, enjoy a guided horse trek, ski at the nearby family-owned ski fields, or just enjoy the magnificent views.

SUGGESTED ACTIVITY - Tekapo Springs Hot Pools, Ice Skating & Snow Tubing Combo

The ultimate winter experience, ice skating, hot pools and the snow tubing park. Tekapo Springs offers three adjoining main Hot Pools for you to sit back, relax and enjoy yourself while looking out to the beautiful Two Thumb range and stunning Lake Tekapo. Pool temperatures range from forty degrees celsius to thirty-six degrees celsius and each pool offers something different - massage jets to assist in taking away any aches and pains and fountains to splash under. Also included is ice skating at Tekapo Springs scenic outdoor skating rink. The outdoor rink is full sized and operates over winter. Skate hire is included and helmets are provided free of charge for those less experienced skaters. For an adrenalin pumping ride, you'll also get an hour of snow tubing. Snow tubing involves you, a tube, and a 150 metre downhill snow slope. Put these together and you get great fun for all ages and a must do for any trip to Tekapo Springs. The magic carpet will take you from the bottom of the park to the top in no time to do it all again! (Snow tubing available July to mid September)

SUGGESTED ACTIVITY - Dark Sky Project Summit Experience

Earth and Sky Stargazing tour departs nightly from the office in the Lake Tekapo township. Travel to the Mt John observatory high above the village where you will explore features of the majestic Southern Sky. Earth and Sky provide the equipment and the guidance, all you need to bring are keen eyes, warm clothes and a desire to see, learn, and experience.

Navigating your way through the Southern Sky using various telescopes and the naked eye, you will see amazing sights such as our own Milky Way Galaxy, the Southern Cross, Alpha-Centauri - our closest neighbouring star at only 4.3 light years away, and Sirius - the brightest star in our sky.

Behold and learn about our closest neighbouring galaxies, the Magellanic Clouds, which grace our night sky along with constellations such as Orion the Hunter and Scorpius.

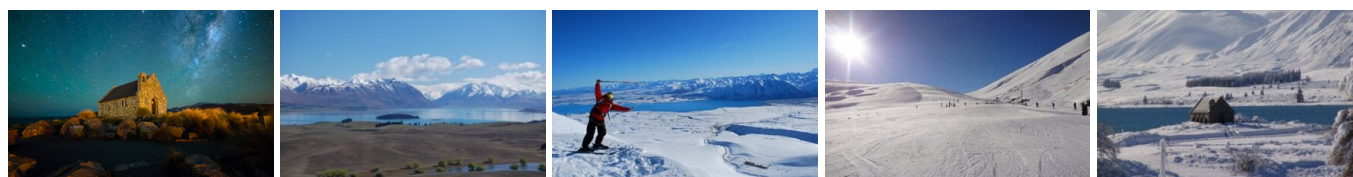
You may also have the opportunity to see star clusters like the beautiful Jewel Box; awe inspiring planets; nebulae, immense clouds of gas and dust; and distant galaxies which test the limits of human imagination.

Your accommodation: Lake Tekapo Village Motel

Lake Tekapo Village Motel is conveniently located in the Lake Tekapo Village Centre, with dining, shopping and services all within easy walking distance. The closeness to amenities and superb views will make your stay very special.



Day 4



Lake Tekapo to Roundhill Ski Area and return

From Lake Tekapo it's a short drive to Roundhill Ski Area. Most of the driving is flat and follows the lake edge along Lilybank Road before you reach the ski field access road. The wide and gradual ski field access road makes for an enjoyable and easy drive to the top.

Roundhill Ski Area

Roundhill Ski Area is a laid-back, locally loved ski field overlooking the turquoise waters of Lake Tekapo. It's a great spot for families and beginners, with wide, forgiving slopes and a friendly, welcoming vibe. For those chasing a challenge, the Heritage Express rope tow opens up a huge backcountry playground with epic views of Aoraki Mount Cook. Roundhill combines big mountain scenery with a relaxed, no-fuss atmosphere, making it one of Canterbury's best-kept winter secrets.

Your accommodation: Lake Tekapo Village Motel

Lake Tekapo Village Motel is conveniently located in the Lake Tekapo Village Centre, with dining, shopping and services all within easy walking distance. The closeness to amenities and superb views will make your stay very special.



Day 5



Lake Tekapo to Mt Dobson Ski Area and return

Leaving Lake Tekapo you descend from the high country through Burkes Pass and into rich farmland surrounding the access road to Mt Dobson Ski Area. The 15km access road is maintained to a high standard and it's a 40 minute drive from State Highway 8 to the ski field car park.

Mt Dobson Ski Area

This mountain is famous for its all-day sun, stunning scenery, groomed trails and awesome off-piste... what more could you ask for? Mt Dobson or "Dobbo" as it is known to the locals, has that laid-back and friendly Kiwi vibe, along with some cool features like the large natural half-pipe and miles of untracked snow. Mt Dobson is a definite treat for those wanting to explore uncrowded trails. A rope tow, platter, T-Bar and triple chairlift provide access to a variety of intermediate and advanced runs serving 14 trails over an area of 400 hectares.

Your accommodation: Lake Tekapo Village Motel

Lake Tekapo Village Motel is conveniently located in the Lake Tekapo Village Centre, with dining, shopping and services all within easy walking distance. The closeness to amenities and superb views will make your stay very special.



Day 6



Lake Tekapo to Lake Ohau

On your short journey today, we recommend you stop at the visitor centre on the southern shores of Lake Pukaki. As well as a great presentation detailing the formation of the region over thousands of years you are also often rewarded with uninterrupted views of over 50 kilometres to the peak of Aoraki Mount Cook (clouds permitting of course). Your final destination today is Lake Ohau famous for skiing, camping and incredible views.

Ohau Snow Fields

Ohau Ski Area caters for all skiing and snowboarding abilities and offers a breath-taking backdrop of the Southern Alps and Lake Ohau below. For beginners, the snow mat takes you to gentle slopes for learning and you can book lessons with the friendly Ohau instructors. Intermediate skiers and boarders are well looked after with 50% of the terrain graded intermediate. Take the double chair lift to the top of the mountain where you'll ride wide flat slopes down the Boulevard with style. For those looking for more of a challenge, hiking around the tops to access the best powder snow is definitely worth it, not to mention the unbelievable views. Wanting to practice your tricks there are 2 terrain parks, 1 for beginners and an intermediate/advanced park. When you're ready for a break the day lodge is a cosy space with a log burner, large social tables and the onsite cafe; offers great food and coffee.

Your accommodation: Lake Ohau Lodge

Lake Ohau Lodge sits overlooking Lake Ohau with a magnificent mountain backdrop. The onsite restaurant and comfortable rooms make this a relaxing base to explore the ski field or walking and biking tracks.



Day 7



Lake Ohau to Queenstown

Follow the lake edge back towards the main road, then turn south towards Omarama. Omarama is the gliding capital of New Zealand and the nearby Clay Cliffs are an impressive natural formation, worth a detour if time allows. For a refreshment break the Wrinkly Rams cafe; offers great food and coffee. From there follow the Ahuriri River with the Clay Cliffs backdrop to the Lindis Pass, one of New Zealand's highest roads with the summit reaching 971 metres. The tussock covered hills offer an unusual contrast as you pass from the Mackenzie Basin and into Central Otago.

The first Central Otago settlement you reach is the quaint village of Tarras, which has a number of boutique stores and a lovely cafe;. Bendigo, just off the main highway, was one of Otago's original gold mining settlements and well-marked paths will guide you to explore the remains of stone cottages and other buildings from this bygone era.

Cromwell sits at the head of the Kawarau Gorge. Cromwell old town has restored buildings from before the valley was flooded to create Lake Dunstan for the hydro systems. The sheer cliffs of the Kawarau Gorge guide you towards Queenstown and Gibbston one of New Zealand's premier wine growing regions. At the famous historic Kawarau Bridge you can take a bungy jump or just watch others if you would rather.

Approaching Queenstown the impressive Remarkables mountain range come into view and then beautiful Lake Wakatipu as you head towards the alpine resort town of Queenstown, the adventure and activity capital of New Zealand.

SUGGESTED ACTIVITY - TSS Earnslaw Cruise and Walter Peak Gourmet BBQ Dinner

Enjoy a quintessential Kiwi experience, a delicious gourmet BBQ buffet meal, and a farm demonstration in a stunning lakeside setting. Take in the stunning views of Lake Wakatipu and its surroundings as you cruise across the lake to the historic Walter Peak high country farm aboard the TSS Earnslaw Steamship. Enjoy the ambiance of the heart of the stately homestead while your Colonel's Homestead Restaurant chef prepares a gourmet BBQ dinner. Your seasonal menu includes an extensive selection of local New Zealand produce, including succulent meats and a selection of delicious vegetables and salads. Complete your meal with your choice of delicious desserts, or New Zealand cheeses. After dinner, watch the farm dogs in action with a sheep-herding demonstration and say hello to the other farm animals. Finally, cruise home under the southern stars and enjoy the fresh night air as the lights of Queenstown draw ever closer.

SUGGESTED ACTIVITY - Gondola and 3 Luge Rides with Skyline Queenstown

In the heart of Queenstown, located 450 metres above town in the Ben Lomond Scenic Reserve is the Skyline Complex. A gondola ride to the summit makes for awe-inspiring views of the city surround. Arrive at the complex and wander the outside viewing decks for a picture perfect outlook. Then onto the Luge! The 800 metre luge track offers an exhilarating journey through banked corners, tunnels and dippers.

SUGGESTED ACTIVITY - Shotover Jet Canyon Jet Boat Ride

Shotover Jet is the only company permitted to operate in the Shotover River Canyons. It's a thrilling ride! Skim past rocky outcrops at close range in your Shotover Jet 'Big Red', as you twist and turn through the narrow canyons at breathtaking speeds. And a major highlight - hold tight for the world-famous Shotover Jet full 360-degree spins!

Your accommodation: Blue Peaks Lodge

Blue Peaks Lodge offers well equipped self contained rooms with a fantastic location overlooking Queenstown and is just an easy five minutes walk to the Queenstown lakefront.



Day 8



Queenstown to Coronet Peak Ski Field

The drive from Queenstown to Coronet Peak is a scenic 20-kilometer journey taking around 20-30 minutes. Follow Gorge Road through Arthurs Point, then turn left onto Coronet Peak Road, which winds up to the resort. Allow extra time during peak season, check road conditions beforehand, and consider the ski bus for a hassle-free trip. The road to the ski field is a sealed alpine road, snow chains must be carried. Don't forget to enjoy the stunning mountain and lake views along the way!

Coronet Peak Ski Field

Want to challenge yourself on exciting terrain in some of the best conditions in the Southern Hemisphere? Then Coronet Peak should be top of your list. This theme park created by mother nature offers gripping trails and extensive snowmaking facilities, making for complete snow coverage on multiple trails. Coronet is also home to night skiing for a different take on these roller coaster trails try it under lights. For those just getting to know the snow the dedicated learner and novice areas make finding your snow feet easy and all gear can be hired on the mountain. With 25% beginner slopes, 45% intermediate, and 30% advanced, Coronet Peak has the trail for you. For a break from the snow, enjoy live music at the base building, or wet your whistle with a hot chocolate or cold beverage at Heidi's Hut. The pizza and pasta meals are great for warming you up and giving you an energy boost for the afternoon.

Your accommodation: Blue Peaks Lodge

Blue Peaks Lodge offers well equipped self contained rooms with a fantastic location overlooking Queenstown and is just an easy five minutes walk to the Queenstown lakefront.



Day 9



Return your vehicle to Queenstown Airport

Explore more of Queenstown before dropping your rental car at the airport depot and continuing your onward journey.

Farewell from Aotearoa-New Zealand

Bid farewell to New Zealand, taking with you unforgettable memories of its breathtaking landscapes and incredible adventures. In Maori, it is said mā te wā, which is not goodbye, it is see you soon!

Tour details

Departures:	Daily
Tour type:	NZ Ski Package
Starts:	Christchurch
Finishes:	Queenstown
Tour length:	9
Accommodation:	Motels
Car/transport type:	

Included activities

Includes	3 day lift pass
----------	-----------------

Accommodation summary

Day 1	Methven Motels and Apartments
Day 2	Methven Motels and Apartments
Day 3	Lake Tekapo Village Motel
Day 4	Lake Tekapo Village Motel
Day 5	Lake Tekapo Village Motel
Day 6	Lake Ohau Lodge
Day 7	Blue Peaks Lodge
Day 8	Blue Peaks Lodge