

## Ultimate New Zealand Ski Tour

Experience the ultimate ski adventure across New Zealand, starting in Auckland with a warm-up at Snowplanet, the country's premier indoor snow facility. Journey south to Rotorua to immerse yourself in Māori culture and geothermal wonders before carving the slopes of Turoa and Whakapapa on Mount Ruapehu. Cross the Cook Strait to the South Island, pausing in Kaikōura for coastal relaxation and optional whale watching. Continue through a series of diverse ski fields including Porters, Mt Hutt, Mt Dobson, Roundhill, and Ōhau, each offering unique terrains and stunning alpine vistas. Conclude your expedition in Wanaka and Queenstown with exhilarating runs at Treble Cone, Cardrona, Coronet Peak, and The Remarkables, capped off by an unforgettable snowmobiling experience in the majestic Southern Alps.

Starts in: Auckland  
Finishes in: Queenstown  
Length: 23days / 22nights  
Accommodation: Motels  
Can be customised: Yes

This itinerary can be customised to suit you perfectly. We can add more days, remove days, change accommodations, mix it up, add activities to suit your interests or simply design and create something from scratch. Call us today to get your custom New Zealand itinerary underway.



### Inclusions:

Includes: Late model rental cars

Includes: Unlimited kms

Included activity: Electronic Travel Guide and In-Country Support App

Included activity: Cardrona & Treble Cone - 2 Day Lift Pass

Included activity: 5 Day Lift Superpass with NZ Ski

Included activity: Te Pā Tū Evening Māori Cultural Experience - Dinner Included

Included activity: Interislander Ferry including vehicle Wellington to Picton

Includes: Fully inclusive rental car insurance (excess may apply)

Includes: Afterhours emergency support while touring

Included activity: 5 Day Lift Superpass with NZ Ski

Included activity: TSS Earnslaw Cruise and Walter Peak Gourmet BBQ Dinner

Included activity: Wilderness Snowmobiling Adventure Queenstown

Included activity: Wai-O-Tapu Thermal Wonderland

: 1 special dinner

## Day 1



### Welcome to Auckland

Welcome to Auckland, known in Māori as Tāmaki Makaurau. Auckland is New Zealand's vibrant "City of Sails," and the country's largest metropolitan area. Nestled between the Pacific Ocean and the Tasman Sea. Surrounded by native bush, lush rainforests, and pristine beaches, Auckland is a haven for both adventurers and urban explorers. Wander through world-class museums and galleries in the city centre or enjoy a peaceful retreat at the Auckland Gardens, where stunning landscapes showcase New Zealand's diverse flora. Stroll along the lively waterfront to savour fresh seafood and international cuisine at Viaduct restaurants. For an unforgettable perspective, ascend the iconic SkyTower, New Zealand's tallest structure, and take in panoramic views of the city and its picturesque islands.

### Collect Rental Car

This tour's from price includes an intermediate-sized vehicle, setting you up for comfortable travels. Yet, we understand every adventure is unique! Feel free to select the perfect wheels from our incredible collection of rental cars, spanning from economy hatchbacks to premium SUVs.

### Your accommodation: Oaks Auckland Hotel

Oaks Auckland Hotel offers a comfortable self-contained apartment in downtown Auckland. Located a short walk from Britomart Transport and the Viaduct. Enjoy your stay in central Auckland surrounded by delicious eateries or use your in-house kitchenette to dine in!



## Day 2



### 5 Day Lift Superpass with NZ Ski

The New Zealand Superpass is the most flexible lift pass in New Zealand, giving you access to Coronet Peak, The Remarkables, Mt Hutt along with Snowplanet, Turoa, Whakapapa, Porters, Roundhill, Mt Dobson, and Ohau ski areas. Get more choice, more fun, and more snow time with your New Zealand Superpass, and make the most of your New Zealand holiday!

With 5 days of New Zealand Superpasses, you've got lift access to New Zealand's premier ski areas plus the fun and excitement of a range of off-mountain attractions around New Zealand. You can mix it up a little and ski a day at the different alpine resorts or maybe you've got your eye on a run that you want to conquer over 5 days. Want to ski a little longer, don't own your own gear or snow clothing, or not sure if your skills are up to scratch? No worries, chat to us about adding additional days, rentals, or lessons.

### Snowplanet

Snowplanet is New Zealand's only indoor snow park — so you can enjoy the snow 365 days a year. With over 8,000 square metres of real snow, you've got plenty of room for skiing, snowboarding, snowtubing, and games. There's a comfy restaurant too, complete with snow views, where you can relax and recharge your batteries. Never skied? Not a problem. They have skilled instructors who will get you up to speed quickly.

### Your accommodation: Oaks Auckland Hotel

Oaks Auckland Hotel offers a comfortable self-contained apartment in downtown Auckland. Located a short walk from Britomart Transport and the Viaduct. Enjoy your stay in central Auckland surrounded by delicious eateries or use your in-house kitchenette to dine in!



## Day 3



### Auckland to Rotorua

The drive south from Auckland takes you past the the Bombay Hills which mark the outer boundary of greater Auckland area and it's here you turn inland to central Waikato. You'll soon go through the town of Matamata where you can visit the fully intact Hobbiton film set used in the shooting of the Lord of The Rings and Hobbit trilogies. Continuing on, you'll pass several small farming communities before telltale signs of steam and other geothermal activity signal your arrival into Rotorua.

### Rotorua

Discover the geothermal, adventure, and cultural wonderland of Rotorua. As you explore, you may see steam rising from cracks in the road, bubbling and hissing water in pools along the lake's edge, and the unmistakable smell of Sulfur. Rotorua is rich in Māori culture and history, with many Māori inhabitants recognising the great potential of the volcanic land. For an outdoor adventure, head to The Redwoods and experience the rainforest treetops from high up. There are a few accessible trails for disabled hikers and great biking trails as well. If you're lucky, you might spot some of New Zealand's native birds, such as the Pīwakawaka (Fantail) and the Tūī. Alternatively, enjoy the Lake Tikitapu Blue Lake Walk or explore Kuirau Park, where you'll find bubbling mud pools and steaming lakes. Don't miss the private thermal reserves such as Te Puia and Wai-O-Tapu, where you can walk among bubbling mud pools, spouting geysers, and Sulfur ponds. Just a few minutes from the town centre, the Agrodome and National Kiwi Hatchery offer an insight into nature. Rotorua's rich Māori culture is a must-see. Spend an evening with Te Pā Tū, complete with a traditional-style dinner or stroll along the lake edge to reach one of the country's oldest Māori villages at Ohinemutu. When hunger strikes, visit Eat Street in Rotorua CBD, a vibrant street lined with delicious eateries and restaurants to satisfy any craving. No visit to Rotorua would be complete without experiencing Rotorua's original tourist attraction - a relaxing spa treatment. This town boasts an array of wellness experiences to unwind in. Whether you are seeking adventure, culture, or relaxation, Rotorua offers an unforgettable experience.

### Te Pā Tū Evening Māori Cultural Experience - Dinner Included

New Zealand's Most Awarded Cultural Attraction, presenting Te Pā Tū. Feast on song, drama, tradition, and divine seasonal kai (cuisine) within the forest Pā (village) blanketed by towering Tawa trees, blazing bonfires, and a forest-formed amphitheatre. Te Pā Tū shares Māori history, traditions, and cultural aspirations across 4-hours of celebration and feasting. These events change with each season of the Maramataka, the Māori lunar calendar.

### Your accommodation: Asure Rotorua International Motor Inn

Beautifully appointed and comfortable motel accommodation just a short drive from central Rotorua - the cultural hub of New Zealand!



## Day 4



### Wai-O-Tapu Thermal Wonderland

Wai-O-Tapu Thermal Wonderland is a spectacular showcase of New Zealand's colourful and unique geothermal elements sculpted by thousands of years of volcanic activity. You will be introduced to a diversely different natural landscape, extending over 18-sq. km. Enjoy viewing the volcanic features as you walk at your own pace along well-defined tracks. Relax in the first-class Visitor Centre, home to the Gift Shop and Café facilities. Visit the Mud Pool, the largest in New Zealand, it was originally the site of a large mud volcano which was destroyed through erosion in the 1920s. See the history and beauty of the Lady Knox Geyser at 10:15 am every day where a daily eruption happens of up to 20 metres.



## Rotorua to Whakapapa Village

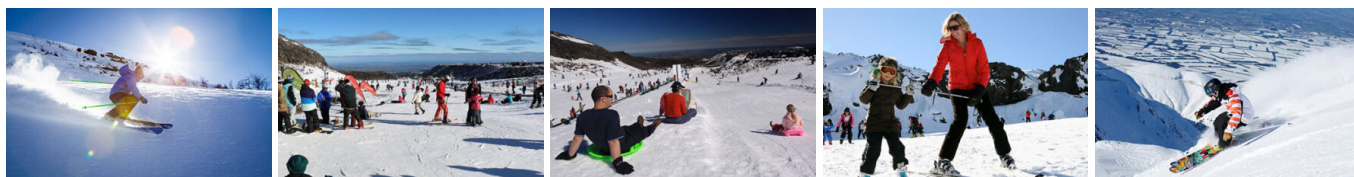
Today you'll drive from Rotorua to Tongariro National Park along the thermal highway. Pass through Taupo and be sure to check out the Wai O Tapu Thermal Wonderland or Waimangu Volcanic Valley both well worth a visit if you can spare the time. Visit the Huka Falls, New Zealand's largest volume of water or take in the boiling mud pools and steam vents as you wander the nearby geothermal reserve, Craters of the Moon. Continue on to the township of Turangi, known as one of the world's best trout fishing locations before emerging out into Tongariro National Park.

### Your accommodation: The Park Hotel Ruapehu

Located in the centre of National Park and is the ideal base for exploring New Zealand's Tongariro Crossing. The on-site Spiral Restaurant & Bar is full of character and is open daily. The outdoor hot tubs, courtyard hammocks & open fireplaces are complimentary for guests and offer the perfect opportunity to relax and unwind after a day of adventure in the Ruapehu region.



## Day 5



### Whakapapa Village to Turoa Ski Field

Driving from Whakapapa Village to Turoa Ski Field takes approximately 1 hour and 15 minutes, covering about 70 km. Depart Whakapapa Village via State Highway 48, then turn south onto State Highway 47, continuing until you reach the junction with State Highway 4. Follow SH4 south through the National Park and onto Ohakune Mountain Road, which ascends to Turoa Ski Field. This road is sealed and well-maintained, but during winter, it may be restricted to 4wd vehicles or those with snow chains. Parking at Turoa operates on a first-come, first-served basis and can fill up early during peak times. For the return trip, retrace your route

### Turoa Ski Field

Turoa Ski Area on the south-western slopes of Mt Ruapehu offers a massive 722m of vertical descent on New Zealand's highest chairlift - the High Noon Express. The Alpine Meadow at the base of Turoa Ski Area is a wonderful little beginners' area. It has a massive 120m long carpet lift, which is like a conveyor belt over the snow and super easy to use. The intermediate terrain at Turoa is mostly wide and smooth, making it a perfect progression from the beginner runs. There are 12 groomed intermediate runs, all of which are nice and long and many of them link to one another so you can enjoy excellent intermediate skiing and riding from the top of Australasia's highest lift to the base area. Enjoy the natural half-pipes and chutes through the Organ Pipes and the Solitude backcountry area or the amazing wide sweeping terrain of the Triangle and the Glacier backcountry area.

### Your accommodation: The Park Hotel Ruapehu

Located in the centre of National Park and is the ideal base for exploring New Zealand's Tongariro Crossing. The on-site Spiral Restaurant & Bar is full of character and is open daily. The outdoor hot tubs, courtyard hammocks & open fireplaces are complimentary for guests and offer the perfect opportunity to relax and unwind after a day of adventure in the Ruapehu region.



## Day 6



### Whakapapa Village to Whakapapa Ski Field

Driving from Whakapapa Village to Whakapapa Ski Field is a short 6 km journey along Bruce Road, taking approximately 10 to 15 minutes. The road is fully sealed and well-maintained, offering a scenic ascent up Mount Ruapehu. During winter, road conditions can vary, and restrictions may apply, such as requirements for 4WD vehicles or fitting snow chains. It's essential to check the current road status before departure. Parking at the ski field operates on a first-come, first-served basis and can fill up quickly during peak times. For the return trip, simply follow Bruce Road back down to Whakapapa Village.

## Whakapapa Ski Field

Whakapapa Ski Area on the north-western slopes of Mt Ruapehu is New Zealand's largest ski area. Whakapapa is home to New Zealand's premiere beginners' area, Happy Valley. It's a big complete learners area in its own valley away from the worry of faster skiers/boarders putting you off. It has its own cafe, rental complex and ski school meeting area. The gentle slope is nice and long, giving you plenty of time to really get the hang of your new sport and there is a slow-moving chairlift that takes you to the top of the slope while giving your legs a rest between runs. There are also more than 30 groomed trails that intermediate skiers and boarders love. The volcanic terrain at Whakapapa gives a massive variety between trails, giving you the choice of bumps, chutes, drops, bowls or nice wide runs. With 24 black and black diamond runs plus the lift accessed Black Magic backcountry area, there is plenty at Whakapapa to get the adrenaline pumping even for the most expert of experts.

### Your accommodation: The Park Hotel Ruapehu

Located in the centre of National Park and is the ideal base for exploring New Zealand's Tongariro Crossing. The on-site Spiral Restaurant & Bar is full of character and is open daily. The outdoor hot tubs, courtyard hammocks & open fireplaces are complimentary for guests and offer the perfect opportunity to relax and unwind after a day of adventure in the Ruapehu region.



## Day 7



### Whakapapa Village to Wellington

This drive takes you to New Zealand's capital, Wellington. Leaving Whakapapa Village, make your way through the Rangipo Desert, skirting the edges of the Tongariro National Park, one of New Zealand's three world heritage sites. Catch a glimpse of the volcanically active Mt Ruapehu and Lord of the Rings fans, will appreciate the view of Mt. Ngauruhoe, better known as Mt Doom. Continue south to the rural towns of Taihape, Mangaweka, and Bulls before arriving on the spectacular Kapiti Coast before arriving in Wellington City.

### Wellington

Wellington known in Māori as Te Whanganui-a-Tara is home to New Zealand's centre of government. Often referred to as 'mini Melbourne', this windy city is a melting pot of art, culture, food, and fashion. Quirky laneway bars, underground art shows, and hipster eateries make up its inner-city vibe, while a host of sandy beaches outside the urban bustle bring a cheerful holiday feel. Head to Te Papa Museum for a history lesson and a ticket to one of its many international exhibitions or jump aboard the Wellington Cable Car - the only running funicular railway in the country. For those with an eye for boutique, fashion wander through Cuba St to sample some of the city's best vintage stores. Break for coffee at a hipster cafe and be sure to snap a pic outside the 'Beehive', New Zealand's parliamentary debate chamber. Go behind the scenes at Weta Workshop Experience, the Oscar Award Winning design studio behind Lord Of The Rings, The Hobbit, and Avatar. If you're a foodie at heart, a two-hour round trip to Martinborough is a must-do. Take your time as you wind through spectacular wine country. For an educational day out, learn about New Zealand's native species at Zealandia, the world's first fully-fenced eco-sanctuary and home to over 40 types of endangered and native birds.

### SUGGESTED ACTIVITY - Zealandia By Night Wildlife Sanctuary Tour

Taking a night tour of Zealandia wildlife eco-sanctuary is an unforgettable experience and one that comes highly recommended. A conservation success and safe haven for some of New Zealand's rarest native animals, Zealandia is home to many remarkable species of birds, reptiles and insects living wild within a beautiful 225 hectare (one square mile) valley, just 10 minutes from the central city.

### Your accommodation: Adina CityLife Wellington [Formerly Heritage CityLife Wellington]

Adina CityLife Wellington is a suite style hotel with every amenity required for a comfortable stay, as well as being in a superb location to explore the compact city centre. Situated on Lambton Quay, you'll find the best shopping, tourist attractions and cultural landmarks all within easy walking distance.



## Day 8



### Interislander Ferry including vehicle Wellington to Picton

The 92 km journey between Wellington and Picton takes around 3 hours and has been described as 'one of the most beautiful ferry rides in the world'. Leaving Wellington Harbour you pass many interesting points such as Pencarrow Head on top of which is New Zealand's oldest lighthouse (1859). Red Rocks is home to a seal colony and Oterangi Bay is the site which recorded the country's highest ever wind speed of 268 kph (167 mph).

From the Cook Strait spectacular views of the Kaikoura Ranges on the South Island can be enjoyed and dolphins and many sea birds are often seen. Around one hour of the cruise takes you through the Marlborough Sounds and this region of bush covered mountains, small islands, crystal clear waters and secluded bays offer remarkable photographic opportunities. The final leg of your cruise travels through Queen Charlotte Sound before coming to an end in the picturesque town of Picton.

### Picton to Kaikoura

From Picton head south on State Highway One towards Blenheim, and the wine-producing region of Marlborough. Ideally located to enjoy an afternoon sampling the local produce, stop for a guided wine tour with Full Day Marlborough Wine Tour. Crossing the dry hills of the Marlborough ranges you head towards one of the most spectacular coastlines of the South Island, the Kaikoura Coast. The road hugs the shore for around 50 kilometres and offers many chances to view the native wildlife such as seabirds and New Zealand fur seals. To the east is the Pacific Ocean and to the west you'll follow alongside the Kaikoura Ranges before arriving into the bustling Kaikoura Township.

### Kaikōura

Kaikōura is a breathtaking seaside town teeming with marine life and natural beauty. As you wander through this coastal paradise, you'll be enveloped by the fresh sea breeze and the sounds of the ocean. Begin your adventure by observing the lively fur seal colony at the tip of the peninsula. For an unforgettable experience, board a boat to go whale watching and marvel at the majestic whales that call these waters home year-round. If you're feeling adventurous, take the plunge and swim with the playful dusky dolphins in their natural habitat. For bird enthusiasts, Kaikōura offers the chance to get up close with the native albatross, an awe-inspiring sight. The town is rich with attractions, walking tracks, and activities for every visitor. A walk around the Kaikōura Peninsula is a must, where you can explore tide pools teeming with marine life, observe sea creatures basking on the rocks, and watch seabirds soaring above. Be sure to keep a respectful distance from the sleeping sea lions you might encounter along the way. Ohau Point is another highlight, where you can watch fur seals frolic in their natural environment. To delve into Kaikōura's fascinating history, visit Fyffe House. This historic whaler's cottage offers a glimpse into the town's whaling past and its evolution over the years. No trip to Kaikōura is complete without sampling the local seafood. Renowned for having some of the best fish and chips in the country, Kaikōura's eateries serve fresh catches straight from the morning's haul, ensuring a delicious and authentic dining experience. If you need a break from the action, unwind at Lavendyl Lavender Farm. Stroll through the fragrant lavender fields, relax in the serene atmosphere, and browse the gift shop for a variety of lavender products. Kaikōura seamlessly blends adventure, history, and relaxation, making it a perfect destination for travellers seeking a unique and enriching experience.

### Your accommodation: The White Morph, Kaikōura

Set on the Esplanade in Kaikōura, The White Morph enjoys commanding views of the ocean and mountains. Just a 10-minute walk into town, The White Morph has been beautifully placed so that you can take in the spectacular scenery of Kaikoura while enjoying the variety of attractions on offer.



## Day 9



### SUGGESTED ACTIVITY - Ocean's Cabin with Whale Watch Kaikōura

Experience New Zealand's only marine-based whale-watching company. Whale Watch Kaikōura offers a once-in-a-lifetime, up-close encounter with the giant Sperm Whale. You are also likely to encounter New Zealand fur seals, dolphins, and albatross. Depending on the season you may also see Pilot, Blue, and Southern Right whales as well as migrating humpbacks. Often orcas can be spotted here and the world's smallest dolphin, the Hector's, occasionally makes an appearance.



## Kaikoura to Arthur's Pass

The drive from Kaikoura south continues to follow the spectacular coastline before heading inland and through North Canterbury's major wine region, the Waipara Valley. You are also introduced to the South Island's most numerous inhabitant, the sheep. A great detour to take is the side trip to Hanmer Springs for a relaxing dip in the thermal pools.

Crossing the Canterbury Plains, the rich farmland that attracted and helped settlers prosper becomes apparent as you head out of the city and towards the mountains.

The drive through the Waimakariri offers some spectacular views of the braided river valleys. Castle Hill Scenic Reserve sits in limestone country and the area is dotted with remarkable rock outcrops. Today it's a popular location for climbers to practice but in the past it was also an important place for Maori in past years as they provided shelter on their seasonal journeys between the coasts. There is a network of walking paths allowing you to explore. The high country lakes and mountain landscape is unique. Arthur's Pass National Park covers 114,500 ha right in the heart of the Southern Alps.

---

### Your accommodation: Arthurs Pass Alpine Motel

Located in the main part of Arthur's Pass, this is the ideal location to enjoy and explore Arthur's Pass National Park. Close to cafes and the visitor centre, your accommodation is in comfortable, self-contained units.



---

## Day 10



### Arthurs Pass to Porters Alpine Resort

Driving from Arthur's Pass to Porters Alpine Resort is a scenic journey of approximately 70 km along State Highway 73, taking about 1 hour and 15 minutes under normal conditions. Departing Arthur's Pass Village, you'll head east on SH73, descending through the Southern Alps and passing through the picturesque Castle Hill Basin. After passing Lake Lyndon, look for the well-signposted turnoff to Porters Alpine Resort on the right. The access road to the resort is about 9 km long, mostly sealed and well-maintained, though it becomes steeper near the top, during winter, snow chains may be required.

---

### Porters Alpine Resort

Porters Alpine Resort is a relaxed, welcoming ski field just over an hour from Christchurch. It's known for its easy-access slopes, varied terrain, and some of the best learner facilities in the region. Beyond the groomed runs, adventurous skiers and boarders can explore wide basins and natural features higher up the mountain. With big views across the Canterbury high country and a casual, friendly vibe, Porters is a local favourite for both quick day trips and laid-back family adventures.

---

### Arthurs Pass to Methven

Descending from the Southern Alps through the Canterbury High Country, pass by Lake Pearson. A beautiful tranquil lake and a good spot for fishing or bird watching. Further on you'll find Castle Hill, often referred to by climbers as one of the best rock climbing and bouldering locations in New Zealand. The limestone rock makes the area a year-round climbing destination. Follow the inland scenic route through the tiny villages of Glentunnel and Glenroy towards Windwhistle and the spectacular Rakaia Gorge taking time to stop and enjoy the spectacular views on this route. A short drive further you will reach the rural town of Methven, renowned for its outdoor adventure and during winter it's the hub for activities such as skiing at Mt. Hutt and heli-skiing in the backcountry. In the warmer months you can enjoy local walks, take in the view from a hot air balloon or enjoy the thrills of a jet boat ride on the Rakaia River.

---

### Your accommodation: Art Deco Masonic Hotel

The Art Deco Masonic Hotel occupies a significant historic building on Napier's waterfront and has been richly refurbished in keeping with the Art Deco architecture. With its central location and decadent décor, this is the best place to experience what Napier is famous for.



## Day 11



### Methven to Mt Hutt Ski Field

Mt Hutt Ski Field is just 26km from Methven. After leaving the Methven township, you will drive a short distance through Canterbury countryside until you reach the well-signposted access road to Mt Hutt ski field. After your day in the snow, you will return to Methven on this same route.

### Mt Hutt Ski Field

Mt Hutt has been voted New Zealand's best ski resort for seven years running at the World Ski Awards. A true alpine experience, with wide-open terrain, leg-burning runs, monster snowfalls, and spectacular views. You've not skied in New Zealand until you've skied Hutt!

Mt Hutt is your go-to for epic freestyle skiing and snowboarding with four terrain park zones featuring jumps and features for all abilities and with the Summit chairlift is an easy way to access great backcountry riding and skiing.

Mt Hutt offers 365 hectares of skiable terrain for you to explore, with the longest run, a lengthy 2km. With its mixture of 25% beginners, 50% intermediate, and 25% advanced terrain there is a range of trails for everyone to conquer. Food and beverages are available at Sixteen10 Espresso Bar, Ski High Cafe, and Opuke Kai which offers mulled wine and an a la carte experience on the mountain, where you can recharge your batteries for your next run. For visitors to the South Island, it's easy to hire all the gear you need on the mountain, so all you need to bring is your enthusiasm. For the littlies, there is a licensed child's creche for 3 months to 5yrs and a snow sports school for both kids and adults who are finding their snow legs.

### Your accommodation: Art Deco Masonic Hotel

The Art Deco Masonic Hotel occupies a significant historic building on Napier's waterfront and has been richly refurbished in keeping with the Art Deco architecture. With its central location and decadent décor, this is the best place to experience what Napier is famous for.



## Day 12



### Methven to Lake Tekapo

Hugging the foothills of the Southern Alps and Peel Forest you arrive into the township of Geraldine, another ideal refreshment stop (local ice cream, cheeses, bakery etc) before you head into the Mackenzie country. Turning west you continue towards the high country and passing through places such as Beautiful Valley it's not hard to understand how the names originated. Ascending Burkes Pass and onto the high country plateau and the picturesque town of Lake Tekapo, the first of the large Southern Lakes. It's a great place to take a scenic flight, enjoy a guided horse trek, ski at the nearby family-owned ski fields, or just enjoy the magnificent views.

### SUGGESTED ACTIVITY - Tekapo Springs Hot Pools, Ice Skating & Snow Tubing Combo

The ultimate winter experience, ice skating, hot pools and the snow tubing park. Tekapo Springs offers three adjoining main Hot Pools for you to sit back, relax and enjoy yourself while looking out to the beautiful Two Thumb range and stunning Lake Tekapo. Pool temperatures range from forty degrees celsius to thirty-six degrees celsius and each pool offers something different - massage jets to assist in taking away any aches and pains and fountains to splash under. Also included is ice skating at Tekapo Springs scenic outdoor skating rink. The outdoor rink is full sized and operates over winter. Skate hire is included and helmets are provided free of charge for those less experienced skaters. For an adrenalin pumping ride, you'll also get an hour of snow tubing. Snow tubing involves you, a tube, and a 150 metre downhill snow slope. Put these together and you get great fun for all ages and a must do for any trip to Tekapo Springs. The magic carpet will take you from the bottom of the park to the top in no time to do it all again! (Snow tubing available July to mid September)



## SUGGESTED ACTIVITY - Dark Sky Project Summit Experience

Earth and Sky Stargazing tour departs nightly from the office in the Lake Tekapo township. Travel to the Mt John observatory high above the village where you will explore features of the majestic Southern Sky. Earth and Sky provide the equipment and the guidance, all you need to bring are keen eyes, warm clothes and a desire to see, learn, and experience.

Navigating your way through the Southern Sky using various telescopes and the naked eye, you will see amazing sights such as our own Milky Way Galaxy, the Southern Cross, Alpha-Centauri - our closest neighbouring star at only 4.3 light years away, and Sirius - the brightest star in our sky.

Behold and learn about our closest neighbouring galaxies, the Magellanic Clouds, which grace our night sky along with constellations such as Orion the Hunter and Scorpius.

You may also have the opportunity to see star clusters like the beautiful Jewel Box; awe inspiring planets; nebulae, immense clouds of gas and dust; and distant galaxies which test the limits of human imagination.

---

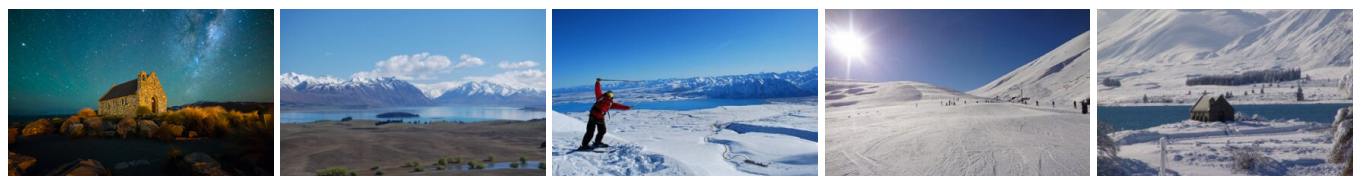
### Your accommodation: Lake Tekapo Village Motel

Lake Tekapo Village Motel is conveniently located in the Lake Tekapo Village Centre, with dining, shopping and services all within easy walking distance. The closeness to amenities and superb views will make your stay very special.



---

## Day 13



### Lake Tekapo to Roundhill Ski Area and return

From Lake Tekapo it's a short drive to Roundhill Ski Area. Most of the driving is flat and follows the lake edge along Lilybank Road before you reach the ski field access road. The wide and gradual ski field access road makes for an enjoyable and easy drive to the top.

---

### 5 Day Lift Superpass with NZ Ski

The New Zealand Superpass is the most flexible lift pass in New Zealand, giving you access to Coronet Peak, The Remarkables, Mt Hutt along with Snowplanet, Turoa, Whakapapa, Porters, Roundhill, Mt Dobson, and Ohau ski areas. Get more choice, more fun, and more snow time with your New Zealand Superpass, and make the most of your New Zealand holiday!

With 5 days of New Zealand Superpasses, you've got lift access to New Zealand's premier ski areas plus the fun and excitement of a range of off-mountain attractions around New Zealand. You can mix it up a little and ski a day at the different alpine resorts or maybe you've got your eye on a run that you want to conquer over 5 days. Want to ski a little longer, don't own your own gear or snow clothing, or not sure if your skills are up to scratch? No worries, chat to us about adding additional days, rentals, or lessons.

---

### Roundhill Ski Area

Roundhill Ski Area is a laid-back, locally loved ski field overlooking the turquoise waters of Lake Tekapo. It's a great spot for families and beginners, with wide, forgiving slopes and a friendly, welcoming vibe. For those chasing a challenge, the Heritage Express rope tow opens up a huge backcountry playground with epic views of Aoraki Mount Cook. Roundhill combines big mountain scenery with a relaxed, no-fuss atmosphere, making it one of Canterbury's best-kept winter secrets.

---

### Your accommodation: Lake Tekapo Village Motel

Lake Tekapo Village Motel is conveniently located in the Lake Tekapo Village Centre, with dining, shopping and services all within easy walking distance. The closeness to amenities and superb views will make your stay very special.



## Day 14



### Lake Tekapo to Mt Dobson Ski Area and return

Leaving Lake Tekapo you descend from the high country through Burkes Pass and into rich farmland surrounding the access road to Mt Dobson Ski Area. The 15km access road is maintained to a high standard and it's a 40 minute drive from State Highway 8 to the ski field car park.

### Mt Dobson Ski Area

This mountain is famous for its all-day sun, stunning scenery, groomed trails and awesome off-piste... what more could you ask for? Mt Dobson or "Dobbo" as it is known to the locals, has that laid-back and friendly Kiwi vibe, along with some cool features like the large natural half-pipe and miles of untracked snow. Mt Dobson is a definite treat for those wanting to explore uncrowded trails. A rope tow, platter, T-Bar and triple chairlift provide access to a variety of intermediate and advanced runs serving 14 trails over an area of 400 hectares.

### Your accommodation: Lake Tekapo Village Motel

Lake Tekapo Village Motel is conveniently located in the Lake Tekapo Village Centre, with dining, shopping and services all within easy walking distance. The closeness to amenities and superb views will make your stay very special.



## Day 15



### Lake Tekapo to Lake Ohau

On your short journey today, we recommend you stop at the visitor centre on the southern shores of Lake Pukaki. As well as a great presentation detailing the formation of the region over thousands of years you are also often rewarded with uninterrupted views of over 50 kilometres to the peak of Aoraki Mount Cook (clouds permitting of course).

Your final destination today is Lake Ohau famous for skiing, camping and incredible views.

### Lake Ohau to the Ohau Ski Field

Driving from Lake Ohau to the Ohau Ski Field is a short but scenic journey that offers a true taste of the Southern Alps. The 9.6 km gravel road winds steeply up the mountain, providing stunning views of Lake Ohau and the surrounding valleys. The road is well-maintained but narrow and unsealed, so a 4wd is recommended, especially if snow or ice is present. Upon reaching the ski field, you'll find a welcoming atmosphere with facilities catering to all skill levels, from beginners to advanced skiers. After enjoying the slopes, the drive back down offers a different perspective of the landscape, making the round trip a memorable experience.

### Ohau Snow Fields

Ohau Ski Area caters for all skiing and snowboarding abilities and offers a breath-taking backdrop of the Southern Alps and Lake Ohau below. For beginners, the snow mat takes you to gentle slopes for learning and you can book lessons with the friendly Ohau instructors. Intermediate skiers and boarders are well looked after with 50% of the terrain graded intermediate. Take the double chair lift to the top of the mountain where you'll ride wide flat slopes down the Boulevard with style. For those looking for more of a challenge, hiking around the tops to access the best powder snow is definitely worth it, not to mention the unbelievable views. Wanting to practice your tricks there are 2 terrain parks, 1 for beginners and an intermediate/advanced park. When you're ready for a break the day lodge is a cosy space with a log burner, large social tables and the onsite cafe offers great food and coffee.

### Lake Ohau to Twizel

Cruising from Lake Ohau to Twizel is a laid-back journey through some of New Zealand's most stunning high-country scenery. You'll roll past shimmering canals, golden tussock fields, and the towering Ben Ohau Range looming over the lake. The road is quiet, dotted with spots perfect for a quick stretch or a photo op—especially near Loch Cameron, where the water reflects the mountains like a mirror. As you approach Twizel, the landscape opens up into the vast Mackenzie Basin, offering big skies and wide horizons. It's a short drive, but one that feels like a mini escape into the heart of the Southern Alps.

## Your accommodation: Distinction MacKenzie Country Hotel, Twizel

Located in the heart of the Mackenzie region the hotel's natural stone architecture compliments the mountains and rivers of New Zealand's Southern Alps. With 108 well equipped rooms the hotel can offer every facility needed for a comfortable stay.



---

## Day 16



### Lake Ohau to Wanaka

Follow the lake edge back towards the main road, then turn south towards Omarama. Omarama is the gliding capital of New Zealand and the nearby Clay Cliffs are an impressive natural formation, worth a detour if time allows. For a refreshment break the Wrinkly Rams cafe offers great food and coffee. From there follow the Ahuriri River with the Clay Cliffs backdrop to the Lindis Pass, one of New Zealand's highest roads with the summit reaching 971 metres. The tussock covered hills offer an unusual contrast as you pass from the Mackenzie Basin and into Central Otago. The first Central Otago settlement you reach is the quaint village of Tarras, which has a number of boutique stores and a lovely cafe. Approaching Wanaka the wonderful alpine lake welcomes you to the town. Despite its size Wanaka has a wide variety of activities available. In winter it is without doubt New Zealand's premier ski destination with its very close proximity to Treble Cone and Cardrona ski fields. Mt Aspiring National Park sits to the western edge of the lake and offers wonderful walking tracks for all abilities; the Rob Roy Track is a great introduction to this spectacular park. Fishing, sailing and water skiing are popular pastimes on the lake and the many beach access points provide great spots for picnics and relaxing.

---

### Explore the winter wonderland of Wanaka

Explore what else Wanaka has to offer, including a range of cafes, bars, and restaurants to enjoy, miles of scenic walking and biking tracks, vineyards and distilleries to visit, and if you are looking for something indoors experience Puzzling World, Transport and Toy Museum or the Base Indoor Climbing Wall. If you still want to be skiing and your legs can handle it then book heli-skiing as it's one of the most breathtaking places to do it in the world.

---

## Your accommodation: Clearbrook Motel and Serviced Apartments

Clearbrook offers luxury apartment style and townhouse accommodation options and is located just metres from Wanaka's main street and its majestic lake front.



---

## Day 17



### Cardrona & Treble Cone - 2 Day Lift Pass

Cardrona is New Zealand's fun and family-friendly ski resort with the most reliable snow conditions in the region. Its high elevation and southerly aspect mean dry natural snow is plentiful, which is further enhanced by snowmaking facilities. Cardrona is the perfect place for beginners and intermediates, with NZ's only combined gondola chairlift, easy-to-use surface lifts, specialised beginner packages and plenty of wide open trails spread over three basins. If you're up for a challenge, you'll find it in Arcadia, with secret powder stashes, chutes and cliff drops. This pass also allows access to Treble Cone Ski Field, the largest ski area in New Zealand's South Island. It is famous for its long, uncrowded groomed runs, legendary off-piste terrain and unrivalled views over Lake Wanaka and the Southern Alps. Located just a 35-minute scenic drive from Wanaka and a 90 minute drive from Queenstown via the Crown Range road.

---

### Wanaka to Treble Cone Ski Field

Leaving on Mt Aspiring Road you will drive along the shore of Lake Wanaka to the base of the Treble Cone Ski Field.



## Treble Cone Ski Field

Treble Cone, the largest ski area in NZ's South Island, is famous for its long, uncrowded groomed runs, legendary off-piste terrain, and unrivaled views over Lake Wanaka and the Southern Alps.

Once you know your way around Home Basin, time to head out wide and explore Matukituki Basin, be sure to stop out there and take in the spectacular views of the Southern Alps and down to Lake Wanaka.

---

### Your accommodation: Clearbrook Motel and Serviced Apartments

Clearbrook offers luxury apartment style and townhouse accommodation options and is located just metres from Wanaka's main street and its majestic lake front.



---

## Day 18



### Wanaka to Cardrona Ski Field

Make your way to the Cardrona Ski Field, passing through the beautiful Cardrona Valley. The 14km Cardrona mountain road is unsealed and offers three parking areas near the base building. For those looking for a slightly shorter drive, the Valley View car park is available before the summit, though access is only recommended for intermediate skiers. For your safety, it's essential to carry tire chains at all times when driving on mountain roads, as weather and road conditions can change rapidly.

You may like to consider riding the free mountain shuttles. Ideal for those unfamiliar with mountain roads, looking to save on fuel, or simply wanting a relaxing ride, the shuttles require no bookings. Park at the designated lot located approx. 1km from the base of the mountain road and hop on the next available shuttle.

---

### Cardrona Alpine Resort

Cardrona Alpine Resort is located between Wanaka and Queenstown so it's handy to both alpine towns. Set over 345 hectares with 20% beginner, 55% intermediate and 25% advanced there are runs to suit all abilities. Cardrona offers parks and pipes of different levels for those that enjoy jumps and freestyle snow fun. If you're bringing the family, Cardrona has the best facilities for kids with a nursery for 3 months to 3yrs, ski kindy for 3-4 yrs and kids ski school for 5yr+. There's also ski school for the big kids no matter your skill level. With onsite full ski and snowboard gear rental available you don't have to worry about packing gear and when you need to rest the legs or fuel your fire, there are 5 cafes on the mountain so you'll find whatever you're craving.

---

### Cardrona Skifield to Queenstown (Winter driving)

Leaving Cardrona you head over New Zealand's highest sealed road, Crown Range Road before dropping into Queenstown.

---

### Queenstown

Queenstown known in Māori as Tāhuna, is home to many adrenaline-inducing activities. Nestled on the shores of Lake Wakatipu, this alpine town has very distinct seasons, and most adrenaline-filled activities can be accessed year-round. Queenstown is home to jet boating, bungy jumping, rafting, skydiving, paragliding, and even indoor thrills. If you want that rush - head out on the Shotover Jet, dive off the Nevis Bungy, freefall on the Canyon Swing, or Zip line the Gondola. While arguably the brightest gem in New Zealand's crown, Queenstown offers far more than an action-packed getaway. If you're looking for a slightly slower pace, there are plenty of recreational activities, including hiking and biking trails to explore, guided tours, boat cruises, scenic flights, or spa and wellness options to help you get away. Head to the lakefront, eat at one of the al fresco eateries, and soak up the local vibes; catch a ride on the iconic 100-year-old steamship the TSS Earnslaw; or take the Skyline Gondola and enjoy bird's-eye views of the Remarkables mountain ranges and Lake Wakatipu. Pack a picnic and go for a hike, only 20 minutes from Central Queenstown, Coronet Peak opens for summer sightseeing. You can ride the Peak Gondola to the top for panoramic views and hike the trails, or go for a bike ride on many excellent biking trails. In winter, Queenstown becomes a world-class winter resort, with four ski areas and a range of activities, bars, restaurants, and ways to relax and unwind.

---

### Your accommodation: Blue Peaks Lodge

Blue Peaks Lodge offers well equipped self contained rooms with a fantastic location overlooking Queenstown and is just an easy five minutes walk to the Queenstown lakefront.



## Day 19



### Explore Queenstown

Well-known as New Zealand's 'adventure capital', Queenstown is home to a range of adventures, from the world's first and most famous bungy jumps to jet boat thrills, white-water rafting, and skydiving. However, Queenstown offers far more than a fast-paced, action-packed holiday. Settled on the shores of beautiful Lake Wakatipu beneath a soaring panorama of the Remarkables Mountain Range, this alpine town is surrounded by many historic, gastronomic, and scenic wonders. Take a stroll through the beautiful lakefront parks and gardens, browse through market stalls on weekends, dine in wonderful al-fresco restaurants, or ride on the 100-year-old historic Steamship - TSS Earnslaw to Walter Peak Station. Take the Queenstown Gondola up to Bob's Peak and soak up the panoramic views of the magnificent lake and mountain ranges. And after all of that, if you do want the adrenaline rush, Queenstown is known for taking your pick from the Shotover Jet, Canyon Swing, Zipline, Luge, or Heli-hike.

### SUGGESTED ACTIVITY - Shotover Jet Canyon Jet Boat Ride

Shotover Jet is the only company permitted to operate in the Shotover River Canyons. It's a thrilling ride! Skim past rocky outcrops at close range in your Shotover Jet 'Big Red', as you twist and turn through the narrow canyons at breathtaking speeds. And a major highlight - hold tight for the world-famous Shotover Jet full 360-degree spins! It is important you read and understand the risks associated with this activity. For more information please see [here](#).

### TSS Earnslaw Cruise and Walter Peak Gourmet BBQ Dinner

Enjoy a quintessential Kiwi experience, a delicious gourmet BBQ buffet meal, and a farm demonstration in a stunning lakeside setting. Take in the stunning views of Lake Wakatipu and its surroundings as you cruise across the lake to the historic Walter Peak high country farm aboard the TSS Earnslaw Steamship. Enjoy the ambiance of the heart of the stately homestead while your Colonel's Homestead Restaurant chef prepares a gourmet BBQ dinner. Your seasonal menu includes an extensive selection of local New Zealand produce, including succulent meats and a selection of delicious vegetables and salads. Complete your meal with your choice of delicious desserts, or New Zealand cheeses. After dinner, watch the farm dogs in action with a sheep-herding demonstration and say hello to the other farm animals. Finally, cruise home under the southern stars and enjoy the fresh night air as the lights of Queenstown draw ever closer.

### Your accommodation: Blue Peaks Lodge

Blue Peaks Lodge offers well equipped self contained rooms with a fantastic location overlooking Queenstown and is just an easy five minutes walk to the Queenstown lakefront.

Meals included:      Speciality Dinner



## Day 20



### Wilderness Snowmobiling Adventure Queenstown

This two and a half hour fully guided snowmobile adventure departs from Glacier Southern Lakes Helicopters hangar at Queenstown Airport, taking you on an exhilarating 13 minute flight (approximately) across the western face of the Remarkables Mountain Range, over the Hector Mountains, and across the Nevis River Valley, where you land at the base of the Garvie Mountains.

After landing at the snowmobile base you will gear up (you will be provided with warm overalls, helmets, gloves, and boots) and have a safety briefing with your guide. Your guide will ensure you can operate your snowmobile safely and comfortably. You are then lead through the sparse backcountry, along the central most inland mountain range in New Zealand, cruising to an altitude of up to 6,000ft above sea level. Stunning scenery and views will astound throughout the whole experience. With stops along the way for some amazing photo opportunities of the spectacular landscape.

The snowmobile tour will move at a pace comfortable for everyone. The snowmobiles are modern Polaris machines, they are easy to operate and your guide is right there if you need any assistance. Upon arriving back to Snowmobiles base, finish your tour with a return helicopter ride back to Queenstown. It is important you read and understand the risks associated with this activity. For more information please click [here](#).

## Your accommodation: Blue Peaks Lodge

Blue Peaks Lodge offers well equipped self contained rooms with a fantastic location overlooking Queenstown and is just an easy five minutes walk to the Queenstown lakefront.



---

## Day 21



### Queenstown to Coronet Peak Ski Field

The drive from Queenstown to Coronet Peak is a scenic 20-kilometer journey taking around 20-30 minutes. Follow Gorge Road through Arthurs Point, then turn left onto Coronet Peak Road, which winds up to the resort. Allow extra time during peak season, check road conditions beforehand, and consider the ski bus for a hassle-free trip. The road to the ski field is a sealed alpine road, snow chains must be carried. Don't forget to enjoy the stunning mountain and lake views along the way!

### Coronet Peak Ski Field

Want to challenge yourself on exciting terrain in some of the best conditions in the Southern Hemisphere? &nbsp;Then Coronet Peak should be top of your list. This theme park created by mother nature offers gripping trails and extensive snowmaking facilities, making for complete snow coverage on multiple trails. Coronet is also home to night skiing for a different take on these roller coaster trails try it under lights. For those just getting to know the snow the dedicated learner and novice areas make finding your snow feet easy and all gear can be hired on the mountain. With 25% beginner slopes, 45% intermediate, and 30% advanced, Coronet Peak has the trail for you. &nbsp;For a break from the snow, enjoy live music at the base building, or wet your whistle with a hot chocolate or cold beverage at Heidi's Hut. The pizza and pasta meals are great for warming you up and giving you an energy boost for the afternoon.&nbsp;

## Your accommodation: Blue Peaks Lodge

Blue Peaks Lodge offers well equipped self contained rooms with a fantastic location overlooking Queenstown and is just an easy five minutes walk to the Queenstown lakefront.



---

## Day 22



### Queenstown to Remarkables Ski Field

Driving from Queenstown to The Remarkables Ski Field is a scenic 24 km journey that typically takes 40 to 45 minutes, depending on road and weather conditions. Begin by heading east on Frankton Road (State Highway 6A) towards Frankton, then continue onto State Highway 6 (Kingston Road). After approximately 2 km, turn left onto The Remarkables Ski Field Access Road. The first 10 km of this road are sealed, while the remaining 3 km are unsealed but well-maintained; it's essential to carry snow chains and drive cautiously, especially during winter months when conditions can be hazardous. Upon reaching the ski field, you'll find multiple car parks, with shuttle services available from lower car parks to the base area. For the return trip, simply reverse the route back to Queenstown.



## The Remarkables Ski Field

The Remarkables offers a laid-back atmosphere which is fantastic for families and those new to skiing or snowboarding. Located just 45 minutes from Queenstown, the Remarkables features a fantastic network of trails with wide, gentle slopes for beginners of all ages and big mountain runs for the experts in the family. With 30% beginner slopes, 40% intermediate and 30% advanced, the Remarkables offers challenges for all levels. For those wanting to progress quickly, the friendly team of instructors can be with you every step of the way. While you're up there don't forget to check out the purpose-built snow tubing lanes before you round off with a steaming hot chocolate or drink at Remarkables cafe. With regular shuttles from Queenstown, lessons for 4yrs+ and complete gear hire on the mountain, this is a fun and easy day out for visitors to the South Island.

---

## Your accommodation: Blue Peaks Lodge

Blue Peaks Lodge offers well equipped self contained rooms with a fantastic location overlooking Queenstown and is just an easy five minutes walk to the Queenstown lakefront.



---

## Day 23



## Return your vehicle to Queenstown Airport

Explore more of Queenstown before dropping your rental car at the airport depot and continuing your onward journey.

---

## Farewell from Aotearoa-New Zealand

Bid farewell to Aotearoa-New Zealand, taking with you unforgettable memories of its breathtaking landscapes and incredible adventures. In Maori, it is said mā te wā, which is not goodbye, it is see you soon!

---

## Tour details

Departures:	Daily
Tour type:	Nationwide Self Drive
Starts:	Auckland
Finishes:	Queenstown
Tour length:	23
Accommodation:	Motels
Car/transport type:	

---

## Included activities

Includes	2 days Flexipass skiing or snowboarding at Mt Ruapehu ski fields
Includes	2 days Ski or Snowboard, poles and boots hire at Mt Ruapehu

---

## Accommodation summary

Day 1	Oaks Auckland Hotel
Day 2	Oaks Auckland Hotel
Day 3	Asure Rotorua International Motor Inn
Day 4	The Park Hotel Ruapehu
Day 5	The Park Hotel Ruapehu
Day 6	The Park Hotel Ruapehu
Day 7	Adina CityLife Wellington [Formerly Heritage CityLife Wellington]
Day 8	The White Morph, Kaikōura
Day 9	Arthurs Pass Alpine Motel
Day 10	Art Deco Masonic Hotel
Day 11	Art Deco Masonic Hotel
Day 12	Lake Tekapo Village Motel
Day 13	Lake Tekapo Village Motel
Day 14	Lake Tekapo Village Motel
Day 15	Distinction MacKenzie Country Hotel, Twizel
Day 16	Clearbrook Motel and Serviced Apartments
Day 17	Clearbrook Motel and Serviced Apartments
Day 18	Blue Peaks Lodge
Day 19	Blue Peaks Lodge
Day 20	Blue Peaks Lodge
Day 21	Blue Peaks Lodge
Day 22	Blue Peaks Lodge